



**EAST ELEVATION**  
1: 125

NOTE	DESCRIPTION
1C	MASONRY BRICK VENEER, COLOUR "RUTHERFORD" BY "FORTERRA" UNIT FORMAT 79mm HIGH X 257mm X 90mm. ALL GROUT AND SEALANT TO MATCH UNIT COLOUR
2A	ARCHITECTURAL MASONRY BLOCK, COLOUR "RENAISSANCE WHITE" BY "ARRISCRAFT" UNIT FORMAT 250mm X 550mm 90mm. ALL GROUT AND SEALANT TO MATCH UNIT COLOUR
2B	ARCHITECTURAL MASONRY BLOCK, COLOUR "RENAISSANCE WHITE" BY "ARRISCRAFT" UNIT FORMAT 90mm X 590mm 90mm. ALL GROUT AND SEALANT TO MATCH UNIT COLOUR
4A	CURTAIN WALL - EXTERIOR & INTERIOR FRAMES CLEAR ANODIZED. SEE CURTAIN WALL ELEVATION PAGE.
8A	PREFINISHED ALUMINUM MODULAR PANELS. COLOUR "CLEAR ANODIZED"
8B	PREFINISHED ALUMINUM MODULAR PANELS. COLOUR MATCH OF PRELCO MEDIUM GREY "PC-8948"
8A	GLAZED ANODIZED ALUMINUM ENTRY DOOR (SEE DOOR SCHEDULE)
8B	PAINTED STEEL DOOR (SEE DOOR SCHEDULE)
10	PREPAINTED METAL FLASHING, COLOUR TO MATCH EXTERIOR FINISH
11	PREPAINTED HORIZONTAL STEEL CLADDING, COLOUR "BONE WHITE"
14	ANODIZED ALUMINUM GUARDRAIL AND POSTS WITH TEMPERED GLASS PANELS. POSTS @ 1500 OC MAX. COLOUR CLEAR ANODIZED
16A	SPANDREL, COLOUR CODE: CH2405675 BY BEIJING NORTHECH GLASS CO. LTD.
16B	SPANDREL, COLOUR CODE: CH2405676 BY BEIJING NORTHECH GLASS CO. LTD.
19	MASONRY BLOCK TRANSITION BAND, COMPOSED OF SPLIT FACE FINISH STONE UNITS. COLOUR "RENAISSANCE WHITE" BY "ARRISCRAFT". SEE DETAIL FOR CONFIGURATION
21	OVERFLOW SCUPPER, COLOUR TO MATCH WALL CLADDING

NOTES GÉNÉRALES / General Notes

- Ces documents d'architecture sont la propriété exclusive de NEUF architect(e)s et ne peuvent être utilisés, reproduits ou copiés sans autorisation écrite préalable. / These architectural documents are the exclusive property of NEUF architect(e)s and cannot be used, copied or reproduced without written pre-authorization.
- Les dimensions apparentées sur ces documents doivent être vérifiées par l'entrepreneur avant le début des travaux. / All dimensions which appear on the documents must be verified by the contractor prior to the commencement of work.
- Vous devez avoir l'architecte de toute dimension enroul et/ou divergences entre ces documents et ceux des autres professionnels. / The architect must be notified of all errors, omissions and discrepancies between these documents and those of the other professionals.
- Les dimensions sur ces documents doivent être lues et non mesurées. / The dimensions on these documents must be read and not measured.

MÉCANIQUE / ÉLECTRIQUE / Mechanical / Electrical  
**JAIN**  
7405 Rue Carleton Crescent, 2nd Floor, Mississauga, ON L5N 9P8  
905.285.9900 jainconsultants.com

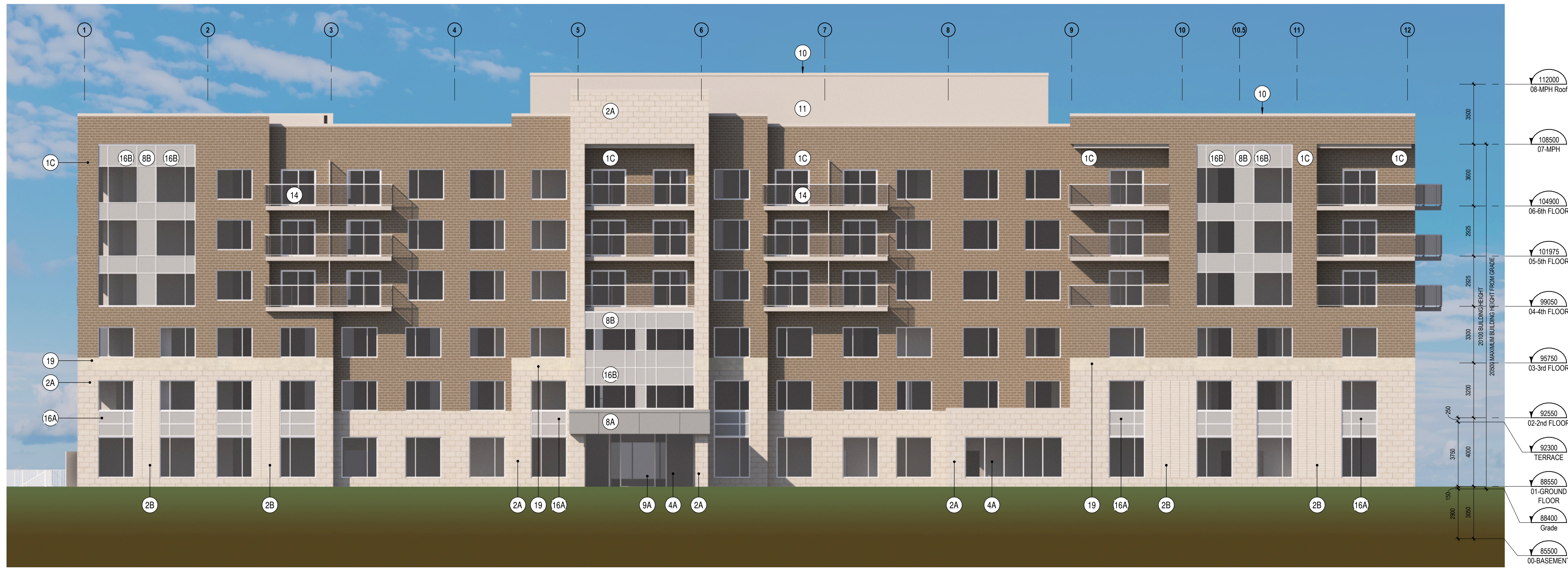
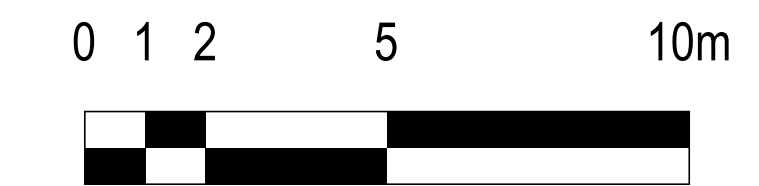
STRUCTURE / Structural  
**Adjeleian Allen Rubeli Limited**  
77 Albert Street, Suite 1005, Ottawa, ON K1P 5E7  
613.232.5186 aar.ca

ARCHITECTURE DE PAYSAGE / Landscape Architect  
**James B. Lennox & Associates**  
3332 Carleton Avenue, Ottawa, ON K2H 1S4  
613.722.5169 jba.ca

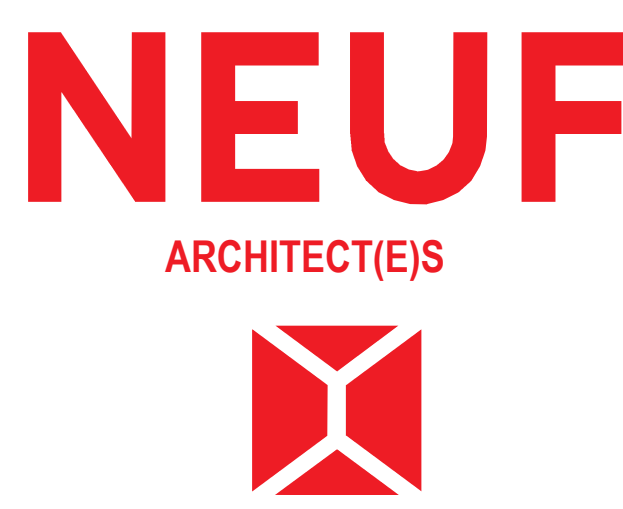
CIVIL / Civil  
**Novatech Eng. Consultants Ltd.**  
240 Michael Cowpland Drive, Suite 200, Ottawa, ON K2M 1P6  
613.234.8663 novatecheng.com

ARCHITECTES / Architect  
**NEUF architect(e)s Inc.**  
10 Robson Street, 4th floor, Ottawa, ON K1N 5J1  
613.234.2274 NEUF.ca

SCEAU / Seal



**SOUTH ELEVATION**  
1: 125



CLIENT / Client  
**CLARIDGE HOMES**  
**RIVERSTONE**  
RETIREMENT COMMUNITIES

OUVRAGE / Project  
**DÉCOEUR RETIREMENT HOME**  
EMPLACEMENT / Location  
2380 Tenth Line Road, Ottawa  
NO. PROJET / No.  
13677

NO.	REVISION	DATE (aa-mm-ii)
A	INTERNAL REVIEW	2025-05-05
B	INTERNAL REVIEW	2025-05-15
C	INTERNAL REVIEW	2025-05-22
D	FOR COORDINATION	2025-06-05
E	FOR COORDINATION	2025-06-20
F	SPA - FOR COORDINATION	2025-07-23
G	SPA	2025-09-19
H	ISSUED FOR SPA	2025-09-29

DESSINÉ PAR / Drawn by  
AA  
DATE (aa-mm-ii)  
2025-02-01  
TITRE DU DESSIN / Drawing Title

VÉRIFIÉ PAR / Checked by  
CR / PV  
ÉCHELLE / Scale  
1: 125  
**COLOURED ELEVATIONS**

NO. DESSIN / Drawing Number  
A400C

