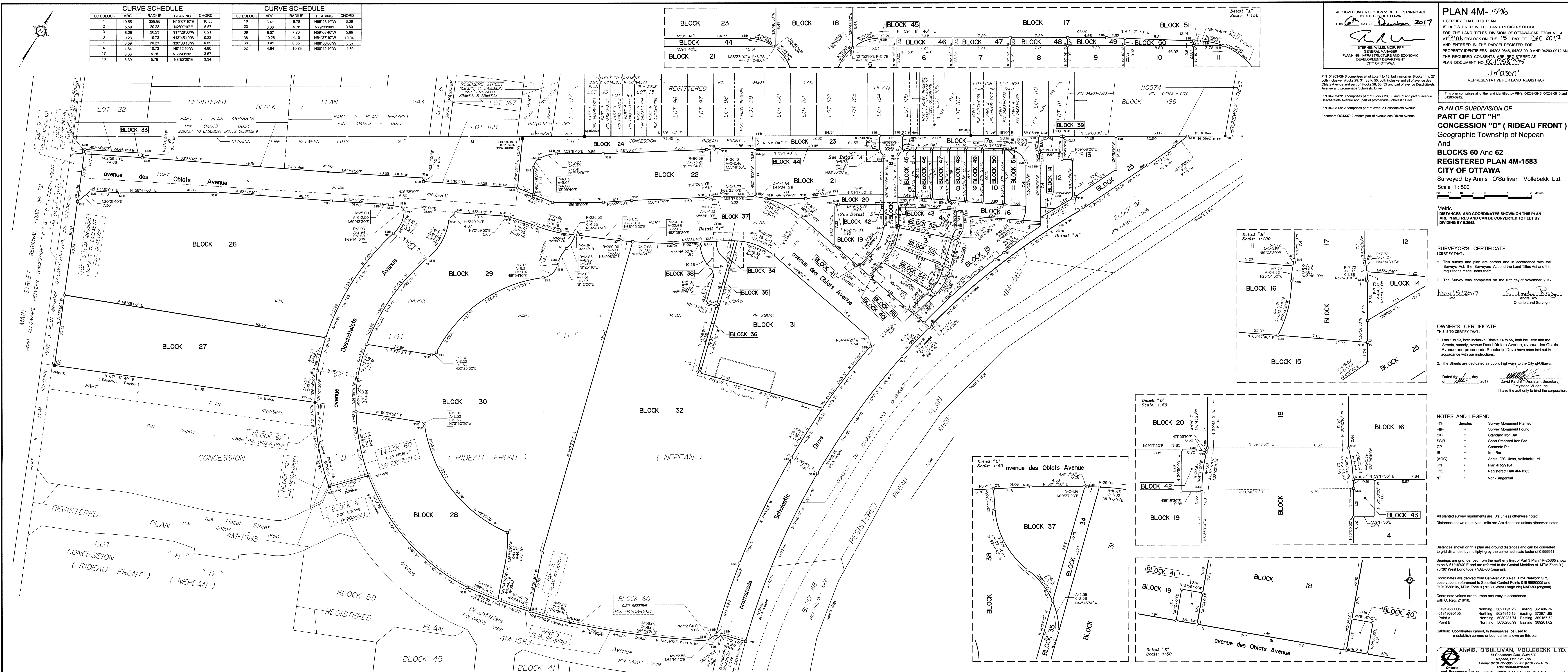


CURVE SCHEDULE				
LOT/BLOCK	ARC	RADIUS	BEARING	CHORD
1	10.55	329.95	N15°01'00"E	10.55
2	5.89	20.23	N2°09'10"E	5.87
3	8.26	20.23	N17°28'00"W	8.21
4	0.23	10.73	N13°45'40"W	0.23
4	0.59	20.23	N30°00'10"W	0.59
4	4.84	10.73	N0°12'40"W	4.80
17	3.63	5.78	N38°41'20"E	3.57
18	3.39	5.78	N3°52'20"E	3.34

CURVE SCHEDULE				
LOT/BLOCK	ARC	RADIUS	BEARING	CHORD
18	3.41	5.78	N68°23'40"W	3.36
23	3.66	5.78	N79°31'00"E	3.60
38	8.07	7.20	N58°08'40"W	5.89
38	10.26	14.10	N54°37'10"W	10.04
38	3.41	6.65	N68°38'00"W	3.37
52	4.84	10.73	N00°12'40"W	4.80



APPROVED UNDER SECTION 51 OF THE PLANNING ACT BY THE CITY OF OTTAWA
 THIS 21st DAY OF December 2017
 STEPHEN HILLIS, MPP
 GENERAL MANAGER
 PLANNING, INFRASTRUCTURE AND ECONOMIC DEVELOPMENT DEPARTMENT
 CITY OF OTTAWA

PLAN 4M-1583
 I CERTIFY THAT THIS DIVISION OF THE LAND REGISTRY OFFICE IS REGISTERED IN THE LAND REGISTRY OFFICE FOR THE LAND TITLES PLAN OF OTTAWA-CARLTON NO. 4 AT 9:00 O'CLOCK ON THE 15th DAY OF Dec 2017 AND ENTERED IN THE PARCEL REGISTER FOR PROPERTY IDENTIFIERS 04203-0846, 04203-0910 AND 04203-0912 AND THE REQUIRED CONSENTS ARE REGISTERED AS PLAN DOCUMENT NO. 04203-0915

PIN 04203-0846 comprises all of Lots 1 to 13, both inclusive, Blocks 14 to 27, both inclusive, Blocks 29, 31, 33 to 55, both inclusive and all of avenue des Oblats Avenue and part of promenade Scholastic Drive.
 PIN 04203-0910 comprises part of Blocks 28, 30 and 32 and part of avenue Deschêtellets Avenue and part of promenade Scholastic Drive.
 PIN 04203-0912 comprises part of avenue Deschêtellets Avenue.
 Easement OCA33712 affects part of avenue des Oblats Avenue.

PLAN OF SUBDIVISION OF PART OF LOT "H" CONCESSION "D" (RIDEAU FRONT)
 Geographic Township of Nepean And
 Blocks 60 And 62
REGISTERED PLAN 4M-1583
 CITY OF OTTAWA
 Surveyed by Annis, O'Sullivan, Vollebek Ltd.
 Scale 1:500

Metric
 DISTANCES AND COORDINATES SHOWN ON THIS PLAN ARE IN METRES AND CAN BE CONVERTED TO FEET BY DIVIDING BY 0.3048.

SURVEYOR'S CERTIFICATE
 I CERTIFY THAT:
 1. This survey and plan are correct and in accordance with the Survey Act, the Survey Act and the Land Titles Act and the regulations made under them.
 2. The Survey was completed on the 10th day of November 2017.
 Date Nov 15, 2017
 André Roy
 Ontario Land Surveyor

OWNER'S CERTIFICATE
 THIS IS TO CERTIFY THAT:
 1. Lots 1 to 13, both inclusive, Blocks 14 to 55, both inclusive and the Streets, namely, avenue Deschêtellets Avenue, avenue des Oblats Avenue and promenade Scholastic Drive have been laid out in accordance with our instructions.
 2. The Streets are dedicated as public highways to the City of Ottawa.
 Dated this 15 day of Nov 2017
 David Karsan (Assistant Secretary)
 Greystone Village Inc.
 I have the authority to bind the corporation.

NOTES AND LEGEND
 -○- denotes Survey Monument Planted.
 -■- Survey Monument Found
 SIB Standard Iron Bar
 SSB Short Standard Iron Bar
 CP Concrete Pin
 IP Iron Bar
 (AOG) Annis, O'Sullivan, Vollebek Ltd.
 (P1) Plan 4R-29184
 (P2) Registered Plan 4M-1583
 NT Non-Tangential

All planted survey monuments are IR's unless otherwise noted.
 Distances shown on curved limits are Arc distances unless otherwise noted.
 Distances shown on this plan are ground distances and can be converted to grid distances by multiplying by the combined scale factor of 0.999941.
 Bearings are grid, derived from the northerly limit of Part 3 Plan 4R-25665 shown to be N 67°16'40" E and are referred to the Central Meridian of MTM Zone 9 (76°30' West Longitude) NAD-83 (original).
 Coordinates are referenced to Specified Control Points 0191968000 and 01919680105, MTM Zone 9 (76°30' West Longitude) NAD-83 (original).
 Coordinate values are to urban accuracy in accordance with O. Reg. 216/10.
 .01919680005 Northing 5027191.26 Easting 361496.76
 .01919680105 Northing 5024915.16 Easting 373971.65
 .Point A Northing 5030271.74 Easting 369157.72
 .Point B Northing 5030280.99 Easting 369261.02
 Caution: Coordinates cannot, in themselves, be used to re-establish corners or boundaries shown on this plan.

ANNIS, O'SULLIVAN, VOLLEBEK LTD.
 14 Concourse Gate, Suite 500
 Nepean, Ont. K2E 7S6
 Phone: (613) 727-0850 / Fax: (613) 727-1079
 www.annis-osullivan.com