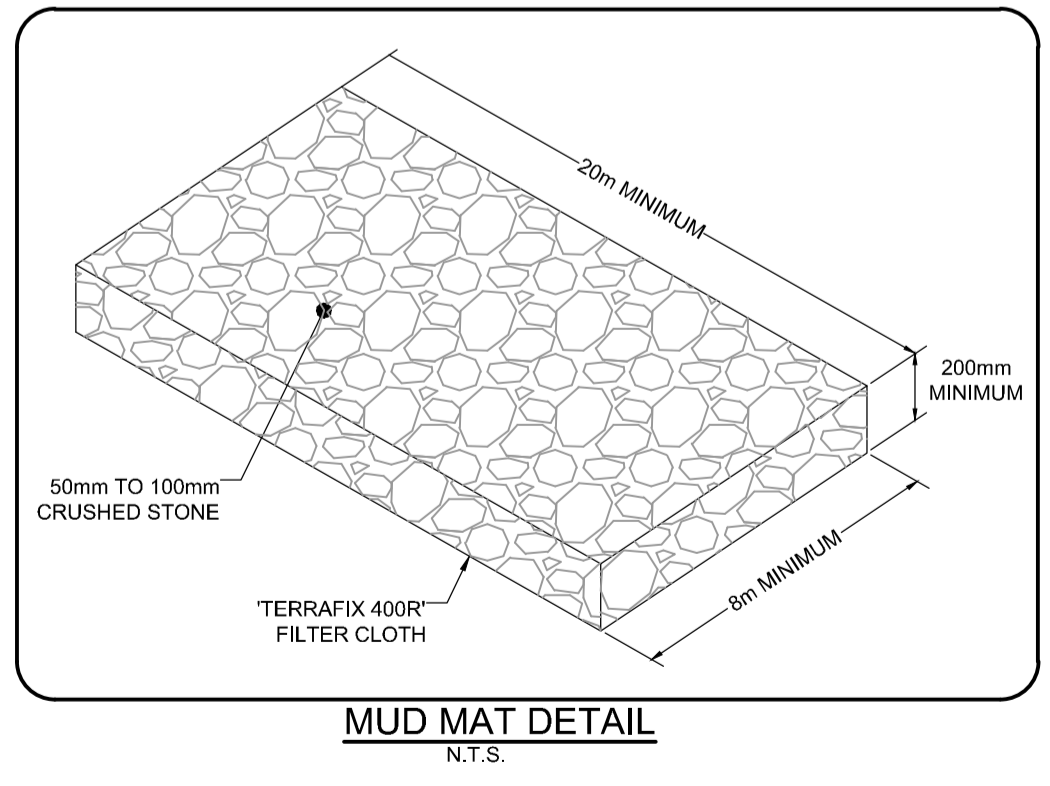


SOURCE REFERENCE:
 TOPOGRAPHIC PLAN OF SURVEY OF PART OF LOT "H" CONCESSION "D" (RIDEAU FRONT), PREPARED BY ANNIS, O-SULLIVAN, VOLLEBEKK LTD. ON DECEMBER 15, 2017.
TOPOGRAPHIC INFORMATION:
 HORIZONTAL DATUM: NAD 83 (ORIGINAL), MTM - ZONE 9
 VERTICAL DATUM: CGVD 1928-1978
 1. ANNIS, O-SULLIVAN, VOLLEBEKK LTD'S TOPOGRAPHIC PLAN OF SURVEY
 2. NOVATECH TOPOGRAPHIC SURVEY, APRIL 2024

LEGEND

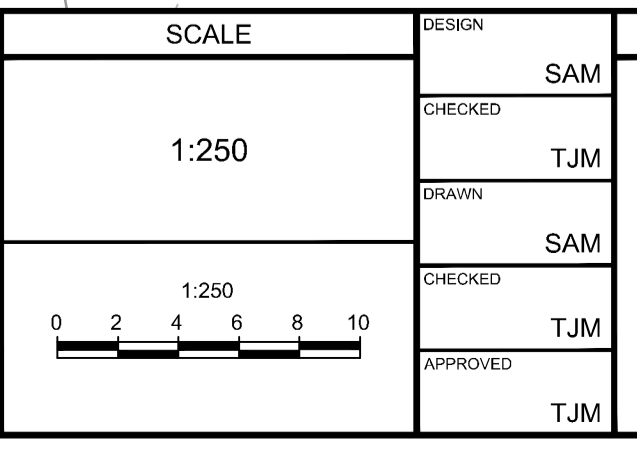
	PROPERTY LINE
	MUD MAT
	BOREHOLE
	SILT FENCE PER OPSD 219.110
	TERRAFIX SILT SOCK/SILT SACK (OR APPROVED EQUIVALENT INLET PROTECTION) INSTALLED AT CATCH BASIN
	TREE PROTECTION FENCING
	EXISTING CONTOUR LINES AND ELEVATIONS
	EXISTING SANITARY MANHOLE
	EXISTING STORM MANHOLE
	EXISTING CATCHBASIN

- EROSION AND SEDIMENT CONTROL NOTES :**
- ALL EROSION AND SEDIMENT CONTROL MEASURES ARE TO BE INSTALLED TO THE SATISFACTION OF THE ENGINEER, THE MUNICIPALITY AND THE CONSERVATION AUTHORITY. THEY ARE TO BE APPROPRIATE TO THE SITE CONDITIONS, INSTALLED PRIOR TO UNDERTAKING ANY SITE ALTERATIONS (FILLING, GRADING, REMOVAL OF VEGETATION, ETC.) AND DURING ALL PHASES OF SITE PREPARATION AND CONSTRUCTION. THESE PRACTICES ARE TO BE IMPLEMENTED IN ACCORDANCE WITH THE CURRENT BEST MANAGEMENT PRACTICES FOR EROSION AND SEDIMENT CONTROL AND SHOULD INCLUDE AS A MINIMUM THOSE MEASURES INDICATED ON THE PLAN.
 - TO PREVENT SURFACE EROSION FROM ENTERING THE STORM SYSTEM DURING CONSTRUCTION, TERRAFIX SILT SOCKS OR SILT SACKS, OR APPROVED EQUIVALENTS, WILL BE PLACED AROUND/UNDER GRATES OF ALL PROPOSED AND EXISTING CATCHBASINS AND STRUCTURES. A LIGHT DUTY SILT FENCE BARRIER WILL ALSO BE INSTALLED IN SELECTED LOCATIONS SHOWN ON THIS PLAN, AND STRAW BALE BARRIERS WILL BE INSTALLED WITHIN THE OUTLET DITCHES. THESE CONTROL MEASURES WILL REMAIN IN PLACE UNTIL VEGETATION HAS BEEN ESTABLISHED AND CONSTRUCTION COMPLETE.
 - THE SEDIMENT CONTROL MEASURES SHALL ONLY BE REMOVED WHEN, IN THE OPINION OF THE ENGINEER, THE MEASURES ARE NO LONGER REQUIRED. NO CONTROL MEASURES MAY BE PERMANENTLY REMOVED WITHOUT PRIOR AUTHORIZATION FROM THE ENGINEER.
 - THE CONTRACTOR SHALL IMMEDIATELY REPORT TO THE ENGINEER ANY ACCIDENTAL DISCHARGES OF SEDIMENT MATERIAL INTO ANY DITCH OR STORM SEWER SYSTEM. APPROPRIATE RESPONSE MEASURES, INCLUDING ANY REPAIRS TO EXISTING CONTROL MEASURES OR THE IMPLEMENTATION OF ADDITIONAL CONTROL MEASURES, SHALL BE CARRIED OUT BY THE CONTRACTOR WITHOUT DELAY.
 - THE CONTRACTOR ACKNOWLEDGES THAT FAILURE TO IMPLEMENT EROSION AND SEDIMENT CONTROL MEASURES MAY BE SUBJECT TO PENALTIES IMPOSED BY ANY APPLICABLE REGULATORY AGENCY.
 - THE CONTRACTOR SHALL ENSURE PROPER DUST CONTROL IS PROVIDED WITH THE APPLICATION OF WATER (AND IF REQUIRED, CALCIUM CHLORIDE) DURING DRY PERIODS.
 - THE CONTRACTOR SHALL PROTECT ALL SURVEY MONUMENTS.
 - ALL TOPSOIL AND ANY SOFT, WET OR DELETERIOUS MATERIAL SHALL BE REMOVED FROM IMPROVED AREAS UNLESS OTHERWISE DIRECTED BY ENGINEER. CONTRACTOR SHALL BE RESPONSIBLE FOR ADHERING TO ALL LEGISLATION REGARDING REMOVALS, INCLUDING EXCESS SOILS.



NOTE:
 THE POSITION OF ALL POLE LINES, CONDUITS, WATERMANS, SEWERS AND OTHER UNDERGROUND AND OVERGROUND UTILITIES AND STRUCTURES IS NOT NECESSARILY SHOWN ON THE CONTRACT DRAWINGS, AND WHERE SHOWN, THE ACCURACY OF THE POSITION OF SUCH UTILITIES AND STRUCTURES IS NOT GUARANTEED. BEFORE STARTING WORK, DETERMINE THE EXACT LOCATION OF ALL SUCH UTILITIES AND STRUCTURES AND ASSUME ALL LIABILITY FOR DAMAGE TO THEM.

No.	REVISION	DATE	BY
2.	RE-ISSUED FOR SITE PLAN APPROVAL	OCT 17/24	TJM
1.	ISSUED FOR SITE PLAN APPROVAL	AUG 14/24	TJM



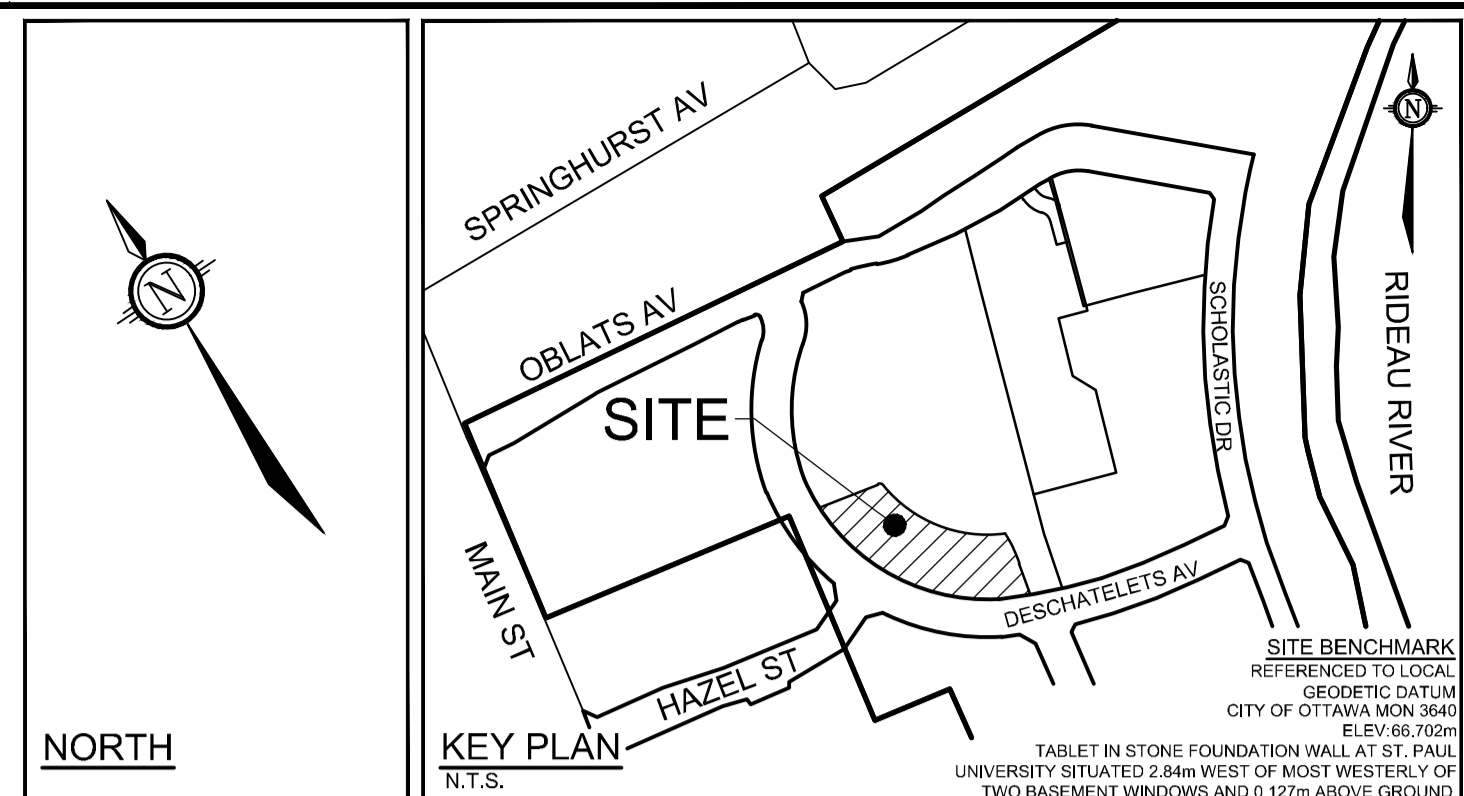
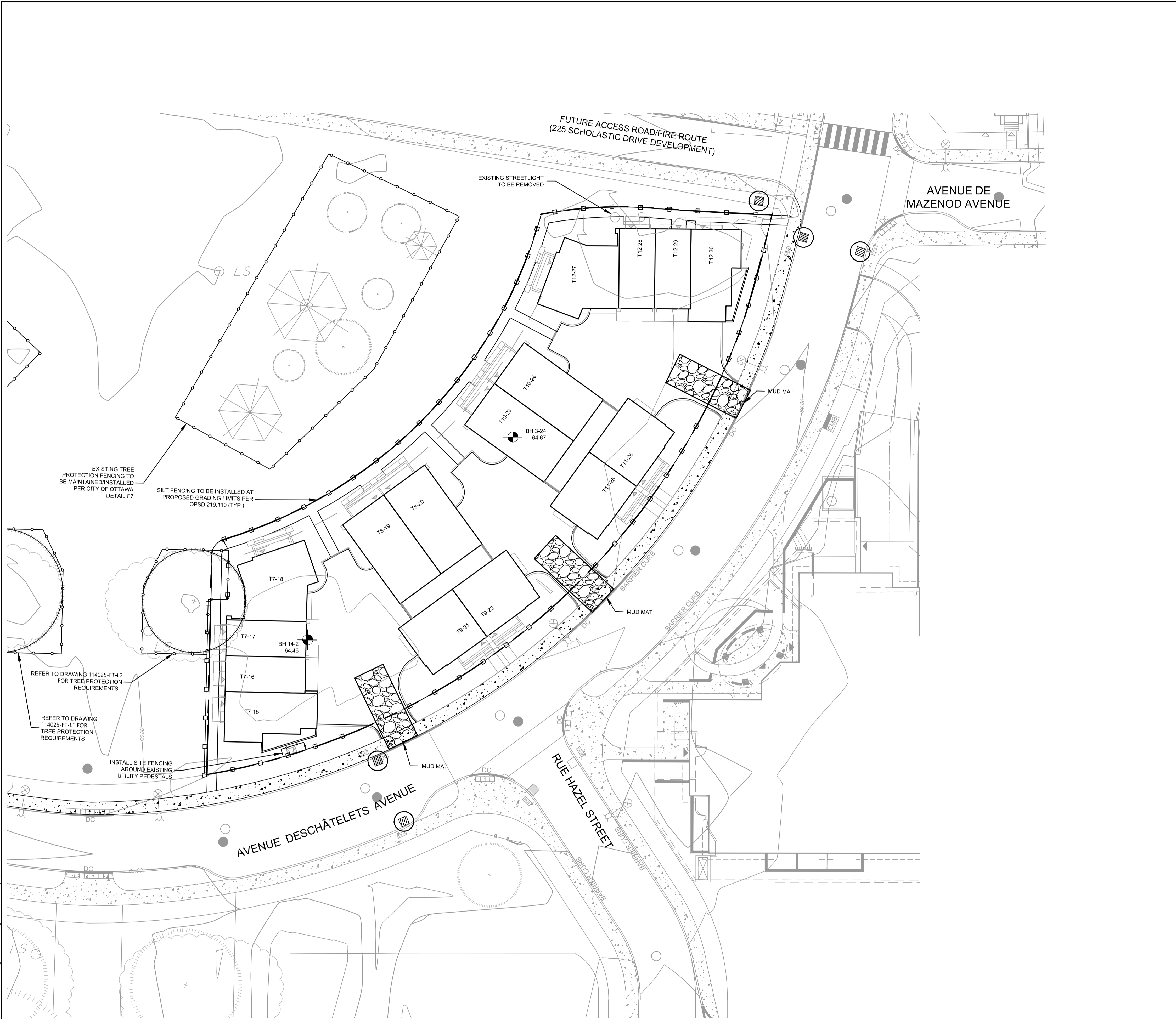
DESIGN	SAM
CHECKED	TJM
DRAWN	SAM
CHECKED	TJM
APPROVED	TJM



NOVATECH
 Engineers, Planners & Landscape Architects
 Suite 200, 240 Michael Cowpland Drive
 Ottawa, Ontario, Canada K2M 1P6
 Telephone: (613) 254-9643
 Facsimile: (613) 254-5867
 Website: www.novatech-eng.com

LOCATION CITY OF OTTAWA GREYSTONE VILLAGE		PROJECT No. 114025
DRAWING NAME BLOCK 29 EROSION, SEDIMENT CONTROL AND REMOVALS PLAN		REV REV # 2
		DRAWING No. 114025-FI-ESC1

M:\2024\114025\FI-ESC1\Drawings\114025-FI-ESC1.dwg, F:\ESC1, Oct 16, 2024 - 4:44pm, channa

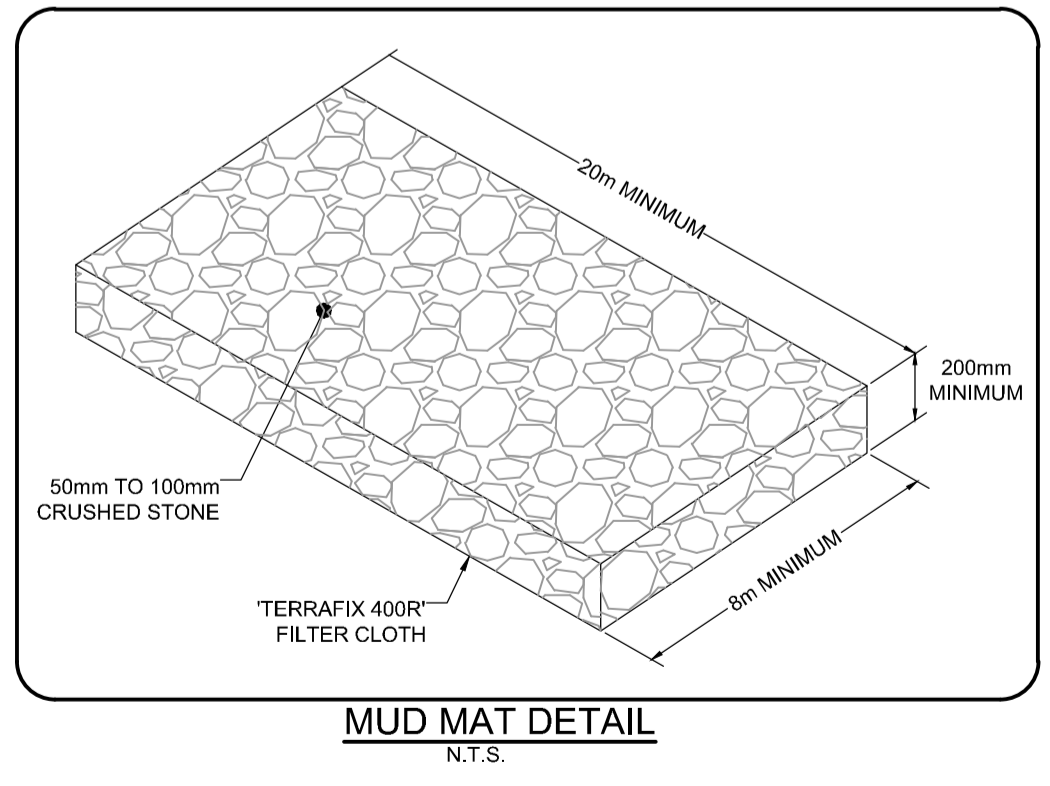


SOURCE REFERENCE:
 TOPOGRAPHIC PLAN OF SURVEY OF PART OF LOT "H" CONCESSION "D" (RIDEAU FRONT), PREPARED BY ANNIS, O-SULLIVAN, VOLLEBEKK LTD. ON DECEMBER 15, 2017.
TOPOGRAPHIC INFORMATION:
 HORIZONTAL DATUM: NAD 83 (ORIGINAL), MTM - ZONE 9
 VERTICAL DATUM: CGVD 1928-1978
 1. ANNIS, O-SULLIVAN, VOLLEBEKK LTD'S TOPOGRAPHIC PLAN OF SURVEY
 2. NOVATECH TOPOGRAPHIC SURVEY, APRIL 2024

LEGEND

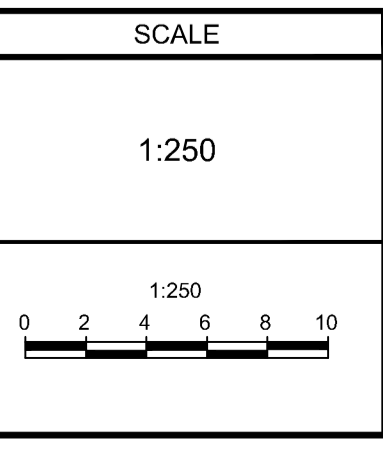
	PROPERTY LINE
	MUD MAT
	BOREHOLE
	SILT FENCE PER OPSD 219.110
	TERRAFIX SILT SOCK/SILT SACK (OR APPROVED EQUIVALENT INLET PROTECTION) INSTALLED AT CATCH BASIN
	TREE PROTECTION FENCING
	EXISTING CONTOUR LINES AND ELEVATIONS
	EXISTING SANITARY MANHOLE
	EXISTING STORM MANHOLE
	EXISTING CATCHBASIN

- EROSION AND SEDIMENT CONTROL NOTES :**
- ALL EROSION AND SEDIMENT CONTROL MEASURES ARE TO BE INSTALLED TO THE SATISFACTION OF THE ENGINEER, THE MUNICIPALITY AND THE CONSERVATION AUTHORITY. THEY ARE TO BE APPROPRIATE TO THE SITE CONDITIONS, INSTALLED PRIOR TO UNDERTAKING ANY SITE ALTERATIONS (FILLING, GRADING, REMOVAL OF VEGETATION, ETC.) AND DURING ALL PHASES OF SITE PREPARATION AND CONSTRUCTION. THESE PRACTICES ARE TO BE IMPLEMENTED IN ACCORDANCE WITH THE CURRENT BEST MANAGEMENT PRACTICES FOR EROSION AND SEDIMENT CONTROL AND SHOULD INCLUDE AS A MINIMUM THOSE MEASURES INDICATED ON THE PLAN.
 - TO PREVENT SURFACE EROSION FROM ENTERING THE STORM SYSTEM DURING CONSTRUCTION, TERRAFIX SILT SOCKS OR SILT SACKS, OR APPROVED EQUIVALENTS, WILL BE PLACED AROUND UNDER GRATES OF ALL PROPOSED AND EXISTING CATCHBASINS AND STRUCTURES. A LIGHT DUTY SILT FENCE BARRIER WILL ALSO BE INSTALLED IN SELECTED LOCATIONS SHOWN ON THIS PLAN, AND STRAW BALE BARRIERS WILL BE INSTALLED WITHIN THE OUTLET DITCHES. THESE CONTROL MEASURES WILL REMAIN IN PLACE UNTIL VEGETATION HAS BEEN ESTABLISHED AND CONSTRUCTION COMPLETE.
 - THE SEDIMENT CONTROL MEASURES SHALL ONLY BE REMOVED WHEN, IN THE OPINION OF THE ENGINEER, THE MEASURES ARE NO LONGER REQUIRED. NO CONTROL MEASURES MAY BE PERMANENTLY REMOVED WITHOUT PRIOR AUTHORIZATION FROM THE ENGINEER.
 - THE CONTRACTOR SHALL IMMEDIATELY REPORT TO THE ENGINEER ANY ACCIDENTAL DISCHARGES OF SEDIMENT MATERIAL INTO ANY DITCH OR STORM SEWER SYSTEM. APPROPRIATE RESPONSE MEASURES, INCLUDING ANY REPAIRS TO EXISTING CONTROL MEASURES OR THE IMPLEMENTATION OF ADDITIONAL CONTROL MEASURES, SHALL BE CARRIED OUT BY THE CONTRACTOR WITHOUT DELAY.
 - THE CONTRACTOR ACKNOWLEDGES THAT FAILURE TO IMPLEMENT EROSION AND SEDIMENT CONTROL MEASURES MAY BE SUBJECT TO PENALTIES IMPOSED BY ANY APPLICABLE REGULATORY AGENCY.
 - THE CONTRACTOR SHALL ENSURE PROPER DUST CONTROL IS PROVIDED WITH THE APPLICATION OF WATER (AND IF REQUIRED, CALCIUM CHLORIDE) DURING DRY PERIODS.
 - THE CONTRACTOR SHALL PROTECT ALL SURVEY MONUMENTS.
 - ALL TOPSOIL AND ANY SOFT, WET OR DELETERIOUS MATERIAL SHALL BE REMOVED FROM IMPROVED AREAS UNLESS OTHERWISE DIRECTED BY ENGINEER. CONTRACTOR SHALL BE RESPONSIBLE FOR ADHERING TO ALL LEGISLATION REGARDING REMOVALS, INCLUDING EXCESS SOILS.



NOTE:
 THE POSITION OF ALL POLE LINES, CONDUITS, WATERMANS, SEWERS AND OTHER UNDERGROUND AND OVERGROUND UTILITIES AND STRUCTURES IS NOT NECESSARILY SHOWN ON THE CONTRACT DRAWINGS, AND WHERE SHOWN, THE ACCURACY OF THE POSITION OF SUCH UTILITIES AND STRUCTURES IS NOT GUARANTEED. BEFORE STARTING WORK, DETERMINE THE EXACT LOCATION OF ALL SUCH UTILITIES AND STRUCTURES AND ASSUME ALL LIABILITY FOR DAMAGE TO THEM.

No.	REVISION	DATE	BY
2.	RE-ISSUED FOR SITE PLAN APPROVAL	OCT 17/24	TJM
1.	ISSUED FOR SITE PLAN APPROVAL	AUG 14/24	TJM



DESIGN	SAM
CHECKED	TJM
DRAWN	SAM
CHECKED	TJM
APPROVED	TJM



NOVATECH
 Engineers, Planners & Landscape Architects
 Suite 200, 240 Michael Cowpland Drive
 Ottawa, Ontario, Canada K2M 1P6
 Telephone: (613) 254-9643
 Facsimile: (613) 254-5867
 Website: www.novatech-eng.com

LOCATION CITY OF OTTAWA GREYSTONE VILLAGE	
DRAWING NAME BLOCK 28 EROSION, SEDIMENT CONTROL AND REMOVALS PLAN	
PROJECT No. 114025	REV # 2
DRAWING No. 114025-FT-ESC2	

M:\2014\114025\CAD\Drawings\114025-FT-ESC2.dwg, T:\ESC2, Aug 19, 2024 - 3:38pm, channa