

Scale 1 : 1000
40 30 20 10 0 20 40 Metres

The intended plot size of the plan is 914 mm in width by 610 mm in height when plotted at a scale of 1:1000.

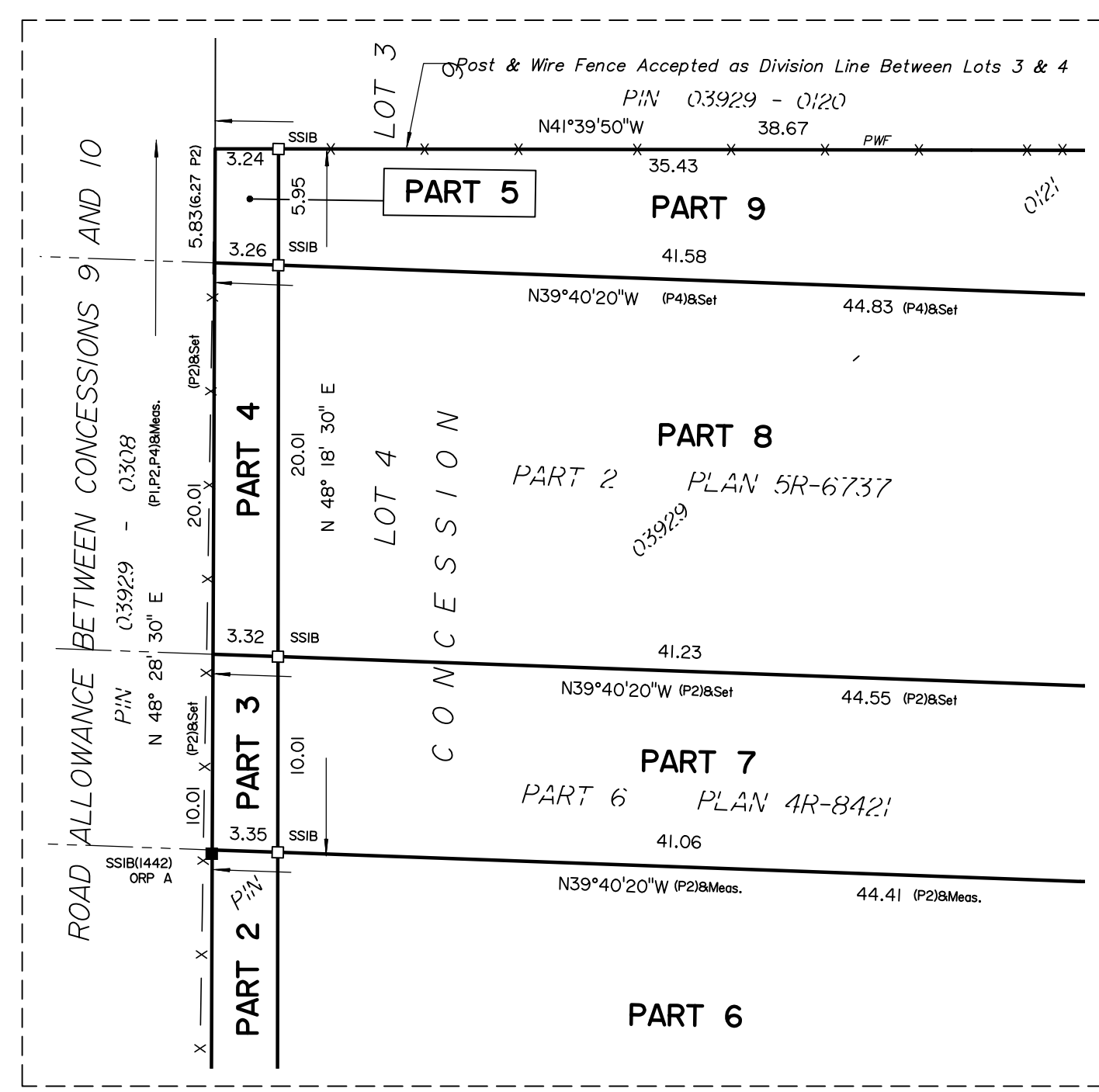
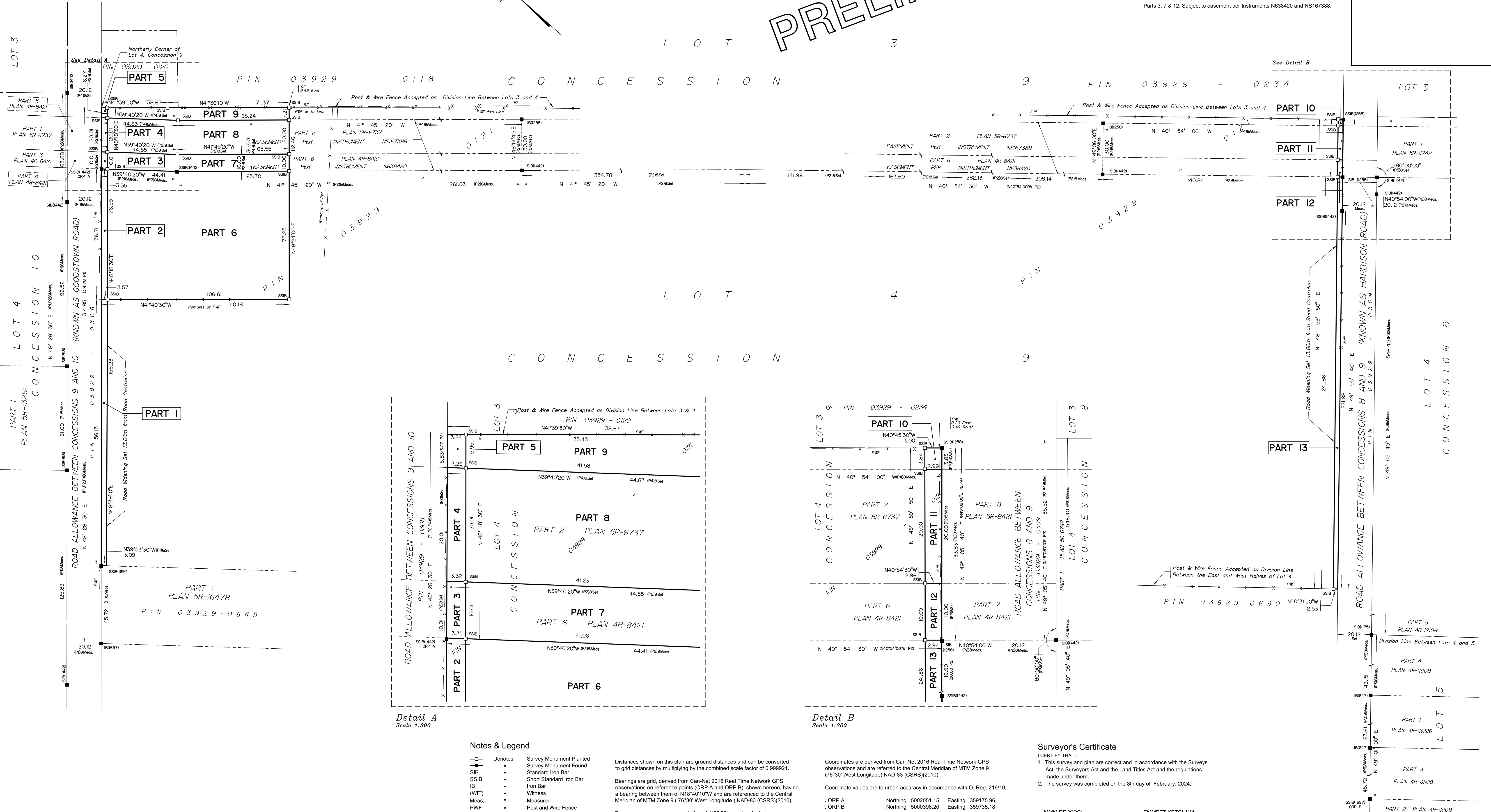
Metric
DISTANCES AND COORDINATES SHOWN ON THIS PLAN ARE IN METRES AND CAN BE CONVERTED TO FEET BY DIVIDING BY 0.3048.

**PLAN OF SURVEY OF
PART OF LOT 4
CONCESSION 9
GEOGRAPHIC TOWNSHIP OF
MARLBOROUGH
NOW IN THE
CITY OF OTTAWA**
Surveyed by Annis, O'Sullivan, Vollebek Ltd.

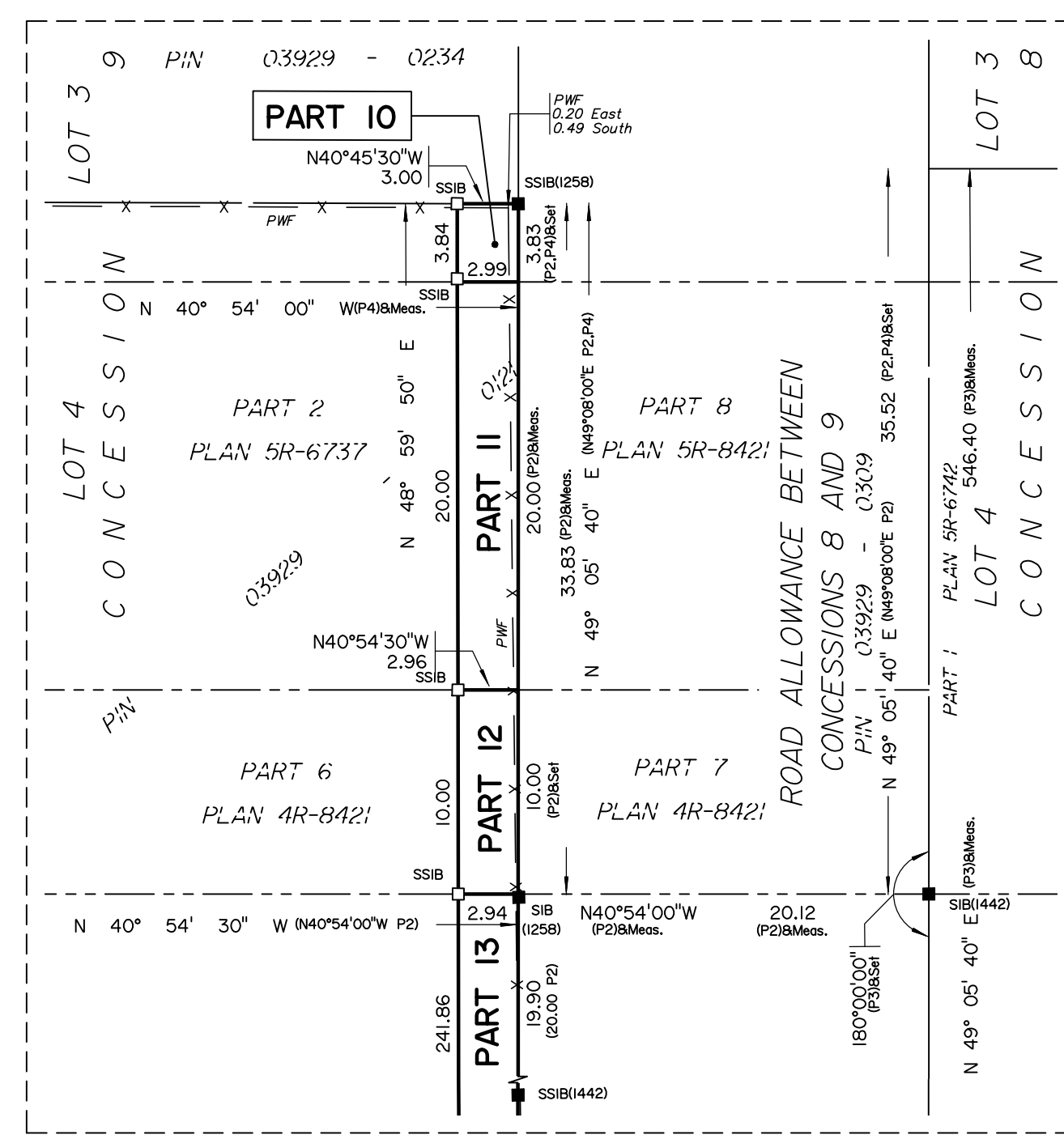
PRELIMINARY

SCHEDULE			
Area (sqm)	PART	PART OF LOT	PART OF PIN
520	1		
265	2		
33	3		
66	4		
19	5		
8050	6	4	03929 - 0121
1068	7		
2136	8		
753	9		
11	10		
60	11		
29	12		
662	13		

Parts 4, 8 & 11: Subject to easement per Instrument NS167388.
Parts 3, 7 & 12: Subject to easement per Instruments N638420 and NS167388.



Detail A
Scale 1:300



Detail B
Scale 1:300

- Notes & Legend**
- Denotes Survey Monument Planted
 - Denotes Survey Monument Found
 - SIB— Standard Iron Bar
 - SSIB— Short Standard Iron Bar
 - IB— Iron Bar
 - (WIT)— Witness
 - Meas.— Measured
 - PWF— Post and Wire Fence
 - RF— Rail Fence
 - (P1)— Plan 4R-16478
 - (P2)— Plan 4R-8421
 - (P3)— Plan 4R-12108
 - (P4)— Plan 5R-6737

Distances shown on this plan are ground distances and can be converted to grid distances by multiplying by the combined scale factor of 0.999921.

Bearings are grid, derived from Can-Net 2016 Real Time Network GPS observations and are referred to the Central Meridian of MTM Zone 9 (76°30' West Longitude) NAD-83 (CSRS)(2010).

For comparison purposes, a rotation of 1°03'30" counter clockwise was applied to the bearings on P1, P2 and P4 and a rotation of 1°53'00" counter clockwise was applied to the bearings on P3.

Coordinates are derived from Can-Net 2016 Real Time Network GPS observations and are referred to the Central Meridian of MTM Zone 9 (76°30' West Longitude) NAD-83 (CSRS)(2010).

Coordinate values are to urban accuracy in accordance with O. Reg. 216/10.

• ORP A Northing 5002051.15 Easting 359175.96
• ORP B Northing 5000396.20 Easting 359735.18

Caution: Coordinates cannot, in themselves, be used to re-establish corners or boundaries shown on this plan.

Surveyor's Certificate

I CERTIFY THAT:

- This survey and plan are correct and in accordance with the Surveys Act, the Surveyors Act and the Land Titles Act and the regulations made under them.
- The survey was completed on the 8th day of February, 2024.

MMM DD YYYY EMMETT KETCHUM
Date Ontario Land Surveyor

This Plan of Survey relates to AOLS Plan Submission Form number 2212683.

ANNIS, O'SULLIVAN, VOLLEBEK LTD.
113 Prescott Street, Box 1340
Kemptville, Ontario K0G 1J0
Phone: (613) 258-1717
Email: Kemptville@aosvlltd.com

Ontario Land Surveyors