

21010 WILDPINE DEVELOPMENT

PAGE DE PRESENTATION

A003 STATISTICS
A101 SITE PLAN



(418) 651-8954
INFO@PMAARCHITECTES.COM

3070, CHEMIN DES QUATRE-BOURGEOIS
QUÉBEC (QC) G1W 2K4

PMAARCHITECTES.COM

21010 WILDPINE DEVELOPMENT

ARCHITECTURE



1202, CARP ROAD, STITTSVILLE, ON K2S 1B9

ARCHITECTURAL



(416) 451-8954
INFO@PMAARCHITECTES.COM
3070, CHEMIN DES QUATRE-BORGEAIS
QUÉBEC (QC) G1W 2N6
PMAARCHITECTES.COM

CIVIL



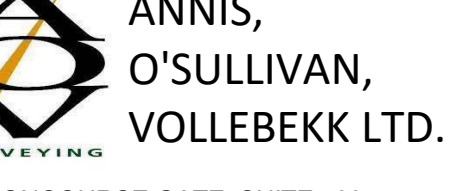
ENGINEERS - ARCHITECTS - PLANNERS
1565 CARLING AVENUE, SUITE 700,
OTTAWA, ON K1Z 8R1

PLANNER



386 Cooper Street, Suite 305, Ottawa, ON K2P 2H7
613.730.5700 www.fotenn.com

SURVEYOR



14 CONCOURSE GATE, SUITE 500,
NEPEAN, ON K2E 7S8

ENVIRONMENTAL CONSULTANT



2285, ST-JAURENT BLVD, SUITE 100,
OTTAWA, ON K1G 4Z6

ARCHITECT SEAL

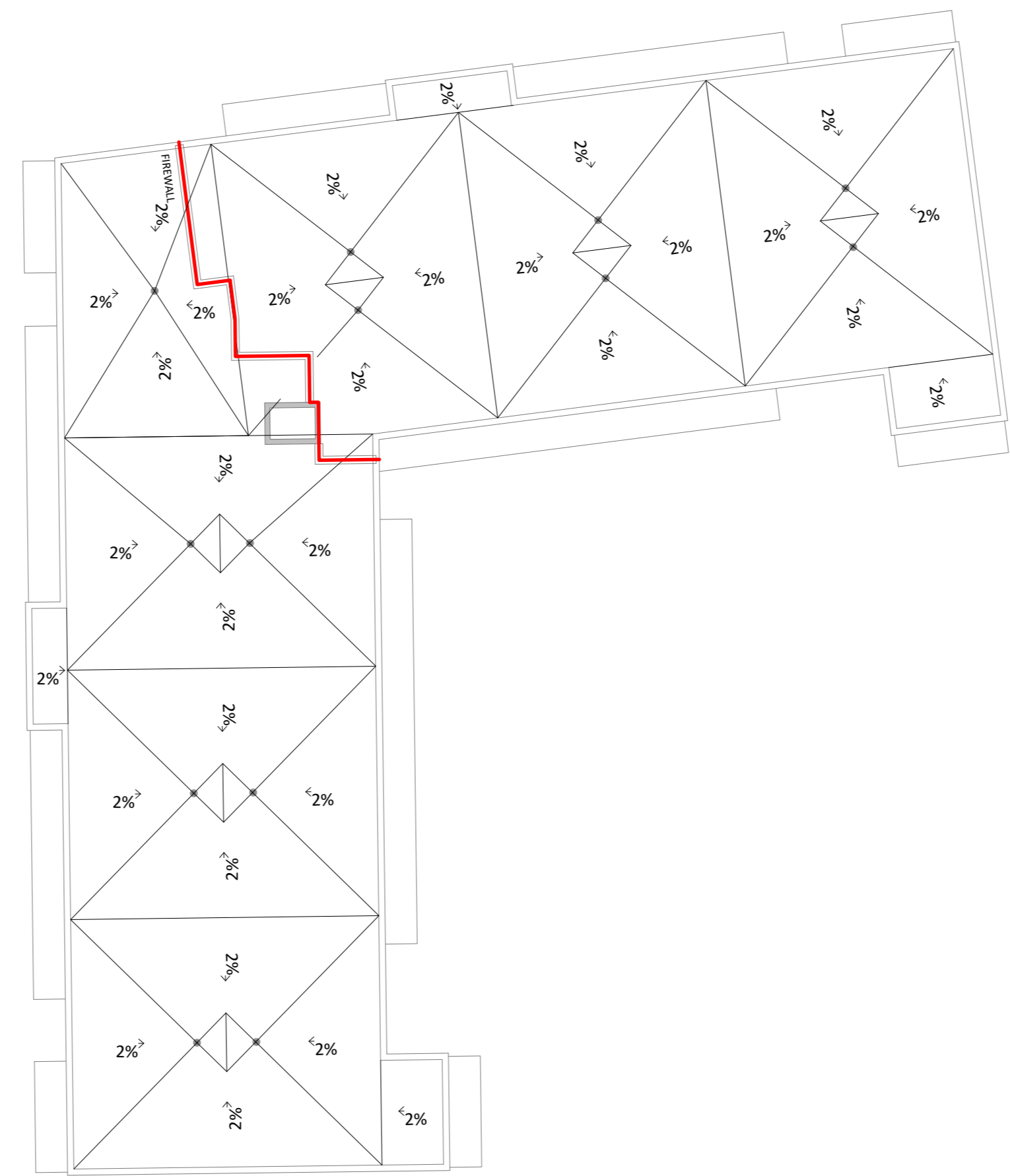
NUMBER OF PARKING		
LEVEL	NUMBER	TYPE
LEVEL P1	93	RESIDENTIAL
LEVEL P1	1	RESIDENTIAL - ADAPTED
LEVEL P1	4	VISITOR
	98	
LEVEL 1	14	VISITOR
LEVEL 1	1	VISITOR - ADAPTED
TOTAL	113	

STATISTICS - TOTAL NUMBER OF UNITS					
TYPE	NUMBER	TOTAL GROSS AREA PER TYPE	AVE. AREA	DISTRIBUTION	REQ. %
1 BED	31	19,736 ft²	637 ft²	33%	0%
1 BED + DEN	29	22,119 ft²	763 ft²	31%	0%
2 BED	34	33,526 ft²	986 ft²	36%	0%
	94	75,381 ft²	2,385 ft²		



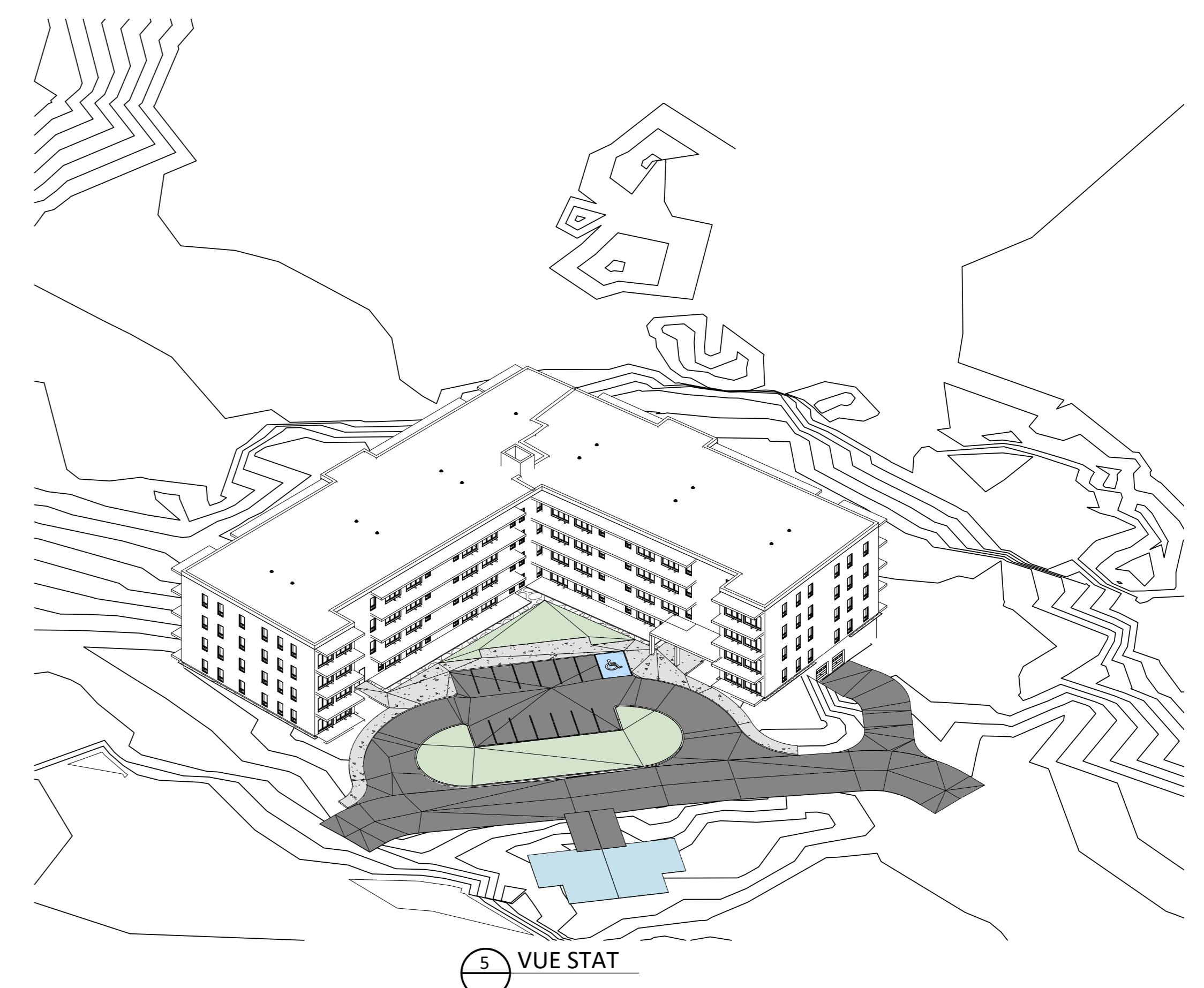
1 LEVEL P1
SQA 06 1:300

3 LEVEL 2-4
SQA 06 1:300



2 LEVEL 1
SQA 06 1:300

4 ROOF
SQA 06 1:300



5 VUE STAT

NO	DESCRIPTION	DATE

NOTE
IT IS THE RESPONSIBILITY OF THE APPROPRIATE CONTRACTOR TO CHECK AND VERIFY ALL DIMENSIONS ON THE SITE AND TO REPORT ALL ERRORS AND/OR OMISSIONS TO THE ARCHITECT. ALL CONTRACTORS MUST COMPLY WITH ALL PERTINENT CODES AND BY-LAWS. DO NOT SCALE DRAWINGS.

THIS DOCUMENT AND ITS CONTENT IS COPYRIGHTED. ANY REPRODUCTION IS PROHIBITED UNLESS GRANTED BY THE ARCHITECT.

DO NOT USE FOR CONSTRUCTION

DATE	DESIGNED
2023-06-20	P.P.
	DRAWN
	P.P.
PROJECT No	CHECKED
21010	P.M.
	SHEET TITLE
	STATISTICS



SITE PLAN LEGEND

	EXISTING BUILDING		LOT LINE
	NEW BUILDING		SETBACKS
	EXISTING WETLANDS		POOLE CREEK - TOP OF BANK
	7.5m BUFFER FROM FLOOD PLAIN LINE		WETLAND BOUNDARY
	FIREWALL		SETBACK FROM TOP OF BANK +28 m
	GRASS		SETBACK FROM TOP OF BANK +30 m
	ASPHALT		SETBACK FROM WETLAND +15 m
	NEW TREE		SETBACK FROM WETLAND +30 m

WILDPINE DEVELOPMENT

OWNER: **LATITUDE Homes**
 1202, CARP ROAD, STITTSVILLE, ON K2S 1B9

ARCHITECTURAL: **PMA ARCHITECTES**
 (418) 451-8954, INFO@PMAARCHITECTES.COM
 3070, CHEMIN DES QUATRE-BOURGEOIS, QUÉBEC (QC) G1W 2K4, PMAARCHITECTES.COM

CIVIL: **J.L. Richards**
 ENGINEERS-ARCHITECTS-PLANNERS
 1565 CARLING AVENUE, SUITE 700, OTTAWA, ON K1Z 8R1

PLANNER: **FOTENN Planning + Design**
 286 Cooper Street, Suite 305, Ottawa, ON K2P 2H7, 613.720.5700, www.fotenn.com

SURVEYOR: **ANNIS, O'SULLIVAN, VOLLEBEK LTD.**
 14 CONCOURSE GATE, SUITE 500, NEPEAN, ON K2E 7S6

ENVIRONMENTAL CONSULTANT: **Kilgour & Associates Ltd.**
 Environmental Consultants
 2285 ST-LAURENT BLVD, SUITE 160, OTTAWA, ON K1G 4Z6

KEY PLAN

ARCHITECT SEAL

REVISIONS

NO	DESCRIPTION	DATE

NOTE: IT IS THE RESPONSIBILITY OF THE APPROPRIATE CONTRACTOR TO CHECK AND VERIFY ALL DIMENSIONS ON THE SITE AND TO REPORT ALL ERRORS AND/OR OMISSIONS TO THE ARCHITECT. ALL CONTRACTORS MUST COMPLY WITH ALL PERTINENT CODES AND BY-LAWS. DO NOT SCALE DRAWINGS.

THIS DOCUMENT AND ITS CONTENT IS COPYRIGHTED. ANY REPRODUCTION IS PROHIBITED UNLESS GRANTED BY THE ARCHITECT.

DO NOT USE FOR CONSTRUCTION

DATE: 2023-06-20
 DESIGNED: P.P.
 DRAWN: P.P.
 PROJECT No: 21010
 CHECKED: P.M.
 SHEET TITLE: **SITE PLAN**

SHEET No: **A101**

C:\Users\pomerleau\Documents\21010_A_GEN_R2L_pomerleau\W453.rvt