

PART OF LOT 5 CONCESSION 11 Geographic Township of Cumberland CITY OF OTTAWA Surveyed by Annis, O'Sullivan, Vollebek Ltd.

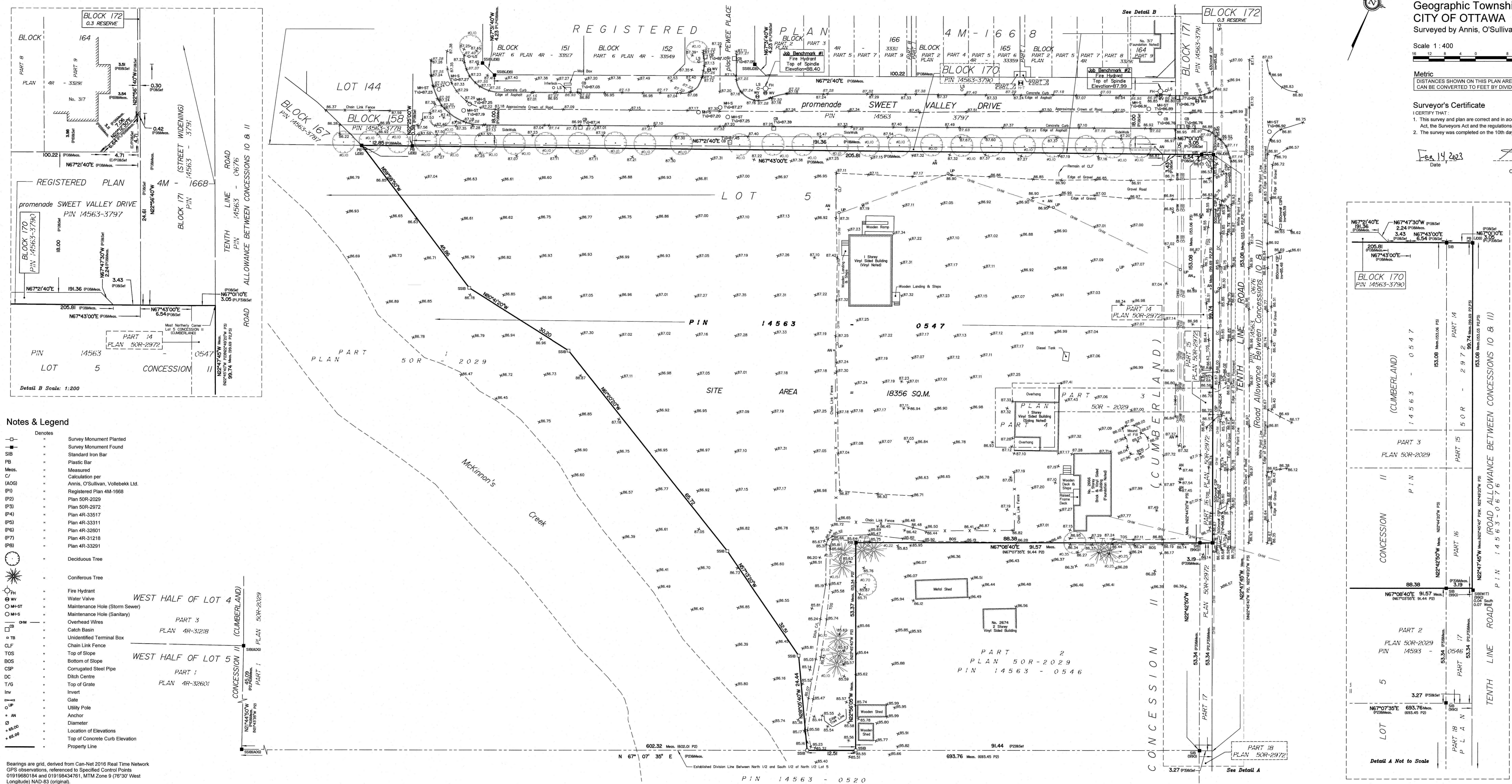
Scale 1:400

Metric DISTANCES SHOWN ON THIS PLAN ARE IN METRES AND CAN BE CONVERTED TO FEET BY DIVIDING BY 0.3048

Surveyor's Certificate

- I CERTIFY THAT: 1. This survey and plan are correct and in accordance with the Surveys Act, the Surveyors Act and the regulations made under them. 2. The survey was completed on the 10th day of February, 2023.

Feb 14 2023 Date T. Hartwick Ontario Land Surveyor



Notes & Legend

- Denotes: Survey Monument Planted, Survey Monument Found, Standard Iron Bar, Plastic Bar, Measured Calculation per, Registered Plan 4M-1668, Plan 50R-2029, Plan 4R-3121B, Plan 4R-3260I, Plan 4R-3329I, Deciduous Tree, Coniferous Tree, Fire Hydrant, Water Valve, Maintenance Hole (Storm Sewer), Maintenance Hole (Sanitary), Overhead Wires, Catch Basin, Unidentified Terminal Box, Chain Link Fence, Top of Slope, Bottom of Slope, Corrugated Steel Pipe, Ditch Centre, Top of Grate, Invert, Gate, Utility Pole, Anchor, Diameter, Location of Elevations, Top of Concrete Curb Elevation, Property Line.

Bearings are grid, derived from Can-NET 2016 Real Time Network GPS observations, referenced to Specified Control Points 01919680184 and 019198434761, MTM Zone 9 (76°30' West Longitude) NAD-83 (original). For bearing comparisons, a rotation of 0°42'10" counter-clockwise was applied to bearings on plan (P2).

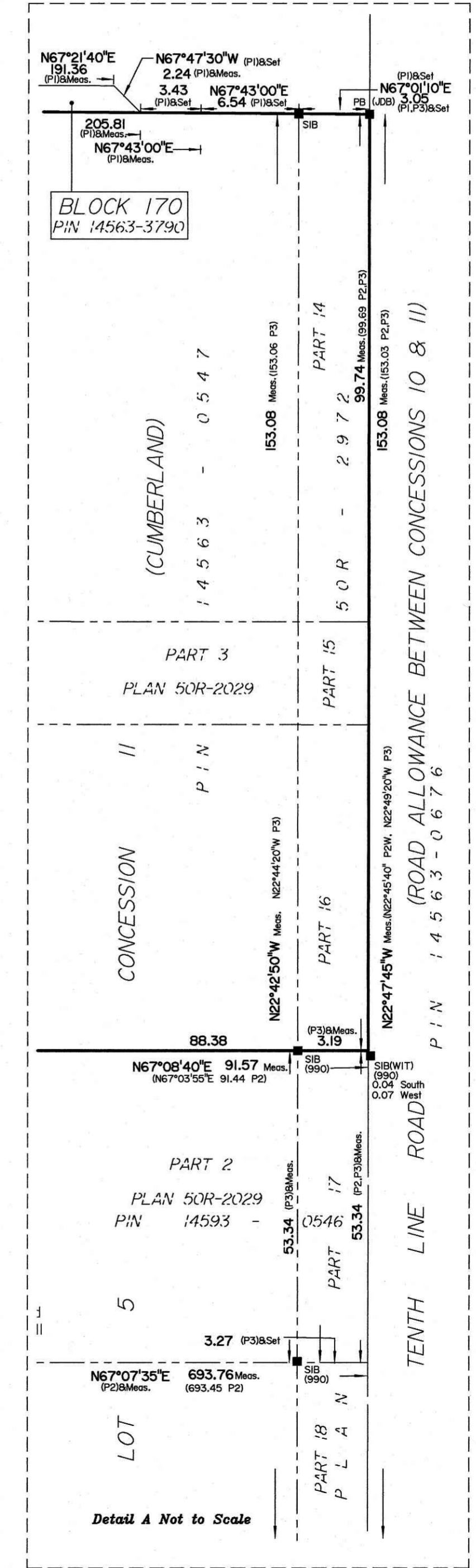
Topographic data was collected under Winter Conditions. Snow cover and ice preclude determining location and elevation of some topographical data that is otherwise visible.

ELEVATION NOTES

- 1. Elevations shown are geodetic and are referred to the CGVD28 geodetic datum. 2. It is the responsibility of the user of this information to verify that the job description has not been altered or disturbed and that it's relative elevation and benchmark agrees with the information shown on this drawing.

UTILITY NOTES

- 1. This drawing cannot be accepted as acknowledging all of the utilities and it will be the responsibility of the user to contact the respective utility authorities for confirmation. 2. Only visible surface utilities were located. 3. A field location of underground plant by the pertinent utility authority is mandatory before any work involving breaking ground, probing, excavating etc.



ASSOCIATION OF ONTARIO LAND SURVEYORS PLAN SUBMISSION FORM V-44962 THIS PLAN IS NOT VALID UNLESS IT IS AN EMBOSSED ORIGINAL COPY ISSUED BY THE SURVEYOR IN accordance with Regulation 1026, Section 29 (c).

ANNIS, O'SULLIVAN, VOLLEBEK LTD. 14 Concourse Drive, Suite 509 Nepean, Ont. K2E 7S6 Phone: (613) 727-0850 / Fax: (613) 727-1079 Email: Annis@anniso.com