

EXIST. SAN MH
TOP 71.58

INSTALL SEDIMENT
CAPTURE FILTER SOCK
INSERT IN EXISTING CBs

EXIST. MH
TOP 71.19

EXIST. CB
TOP 71.10

EXIST. CB
TOP 71.16

MH-9
TOP 71.30

MH-8 (OGS)
TOP 71.40

EXIST. CB
TOP 71.53

Site Benchmark
Top of Spindle of FH
Elevation = 72.68

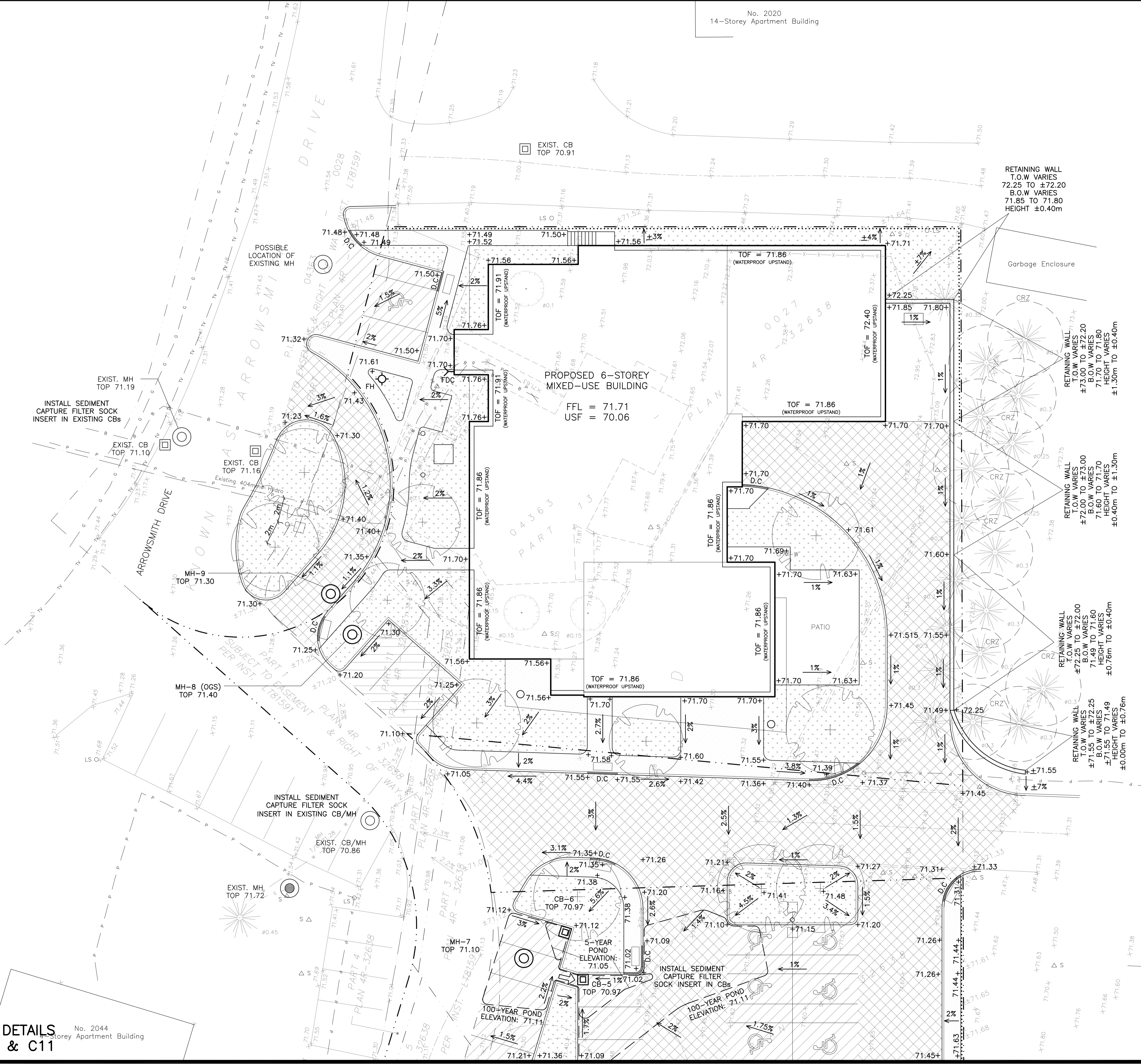
EXIST. MH
TOP 71.72

EXIST. CB/MH
TOP 70.86

MH-7
TOP 71.10

REFER TO NOTES & DETAILS
ON DRAWINGS C-10 & C11

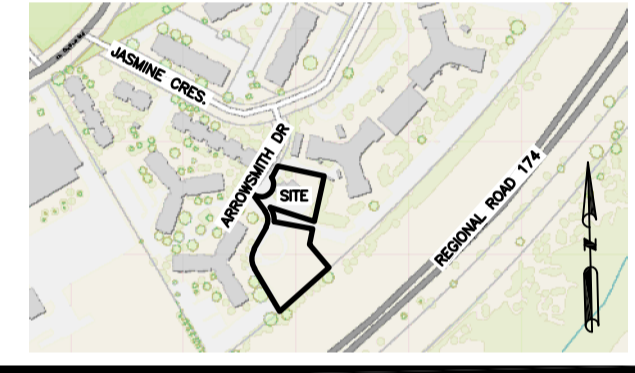
No. 2044
14-Storey Apartment Building



LEGEND

- FFL FINISHED FLOOR ELEVATION
- TOF TOP OF FOUNDATION
- BFL BASEMENT FLOOR ELEVATION
- USF UNDERSIDE OF FOOTING
- PROPERTY LINE
- CRZ CRITICAL ROOT ZONE
- CB CATCH-BASIN
- MH STORM MANHOLE
- CB/MH CATCH-BASIN/MANHOLE
- MH SANITARY MANHOLE
- FH FIRE HYDRANT
- FDC FIRE DEPARTMENT CONNECTION
- +99.99 EXISTING GRADE ELEVATION
- +99.99 PROPOSED GRADE ELEVATION
- 2% PROPOSED SLOPE OF GRADE
- 2% PROPOSED SLOPE OF GRADE
- EMERGENCY OVERLAND FLOW
- T.O.S. TOP OF SLOPE
- B.O.S. BOTTOM OF SLOPE
- CENTERLINE OF SWALE
- 150mm BARRIER CURB
- D.C. DEPRESSED CURB
- /// LIGHT-DUTY PAVEMENT
- /// HEAVY-DUTY PAVEMENT
- CONCRETE
- LANDSCAPE

KEY PLAN

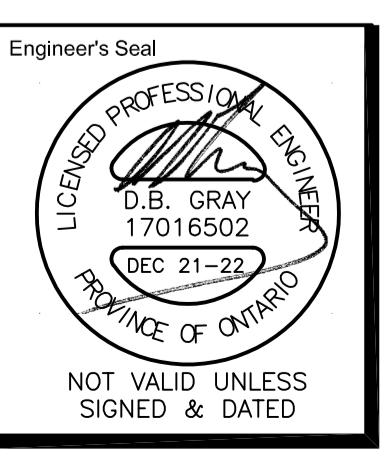


No.	DATE	REVISION
2	DEC 21-22	ISSUED FOR APPROVAL
1	DEC 19-22	ISSUED FOR COORDINATION

D. B. GRAY ENGINEERING INC.
Stormwater Management - Grading & Drainage - Storm & Sanitary Sewers - Watermain
 700 Long Point Circle 613-425-8044
 Ottawa, Ontario d.gray@dbgrayengineering.com

Project
PROPOSED 6-STOREY MIXED-USE BUILDING
2040 ARROWSMITH DRIVE
 OTTAWA, ONTARIO

Drawing Title
GRADING PLAN AND EROSION & SEDIMENT CONTROL PLAN (NORTH)



Engineer's Seal
 Drawn D.B.G.
 H. Scale 1:150
 V. Scale
 Date NOV 29-22
 Job No. 22062
 Drawing No.
C-7
 of 14