

CHAINAGE	PROPOSED	ELEVATIONS	EXISTING
0+000	119.97	120.05	119.95
0+008	117.58	117.71	117.57
0+012.5	115.42	115.42	115.42
0+020	117.71	117.71	117.71
0+040	118.16	118.16	118.16
0+042.3	116.21	116.21	116.21
0+052.3	118.44	118.44	118.44
0+054.6	118.49	118.49	118.49
0+105.6	118.61	118.61	118.61
0+080	118.64	118.64	118.64
0+081.4	116.84	116.84	116.84
0+098.7	118.84	118.84	118.84
0+100	119.06	119.06	119.06
0+117.5	119.74	119.74	119.74
0+120	119.77	119.77	119.77
0+121.9	119.79	119.79	119.79
0+126.7	119.80	119.80	119.80
0+128.7	117.37	117.37	117.37
0+129.1	117.37	117.37	117.37
0+140	119.66	119.66	119.66
0+142	122.06	122.06	122.06
0+143	121.97	121.97	121.97

Path: V:\proj\2022\22-07-20\22-07-20-01\22-07-20-01-01.dwg
 User: jlm
 Date: 2022-07-20 10:16:16 AM
 Plot: 2022-07-20 10:16:16 AM
 Printer: HP DesignJet 2000 PCL6
 Plot Style: 2022.ctb
 Scale: 1:500
 Sheet: 1 of 1
 Title: PLAN AND PROFILE, STREET 2
 Project: HAZELDEAN HORIZONS
 Location: 6171 HAZELDEAN ROAD, OTTAWA, ONTARIO
 Drawing No: C301

CAUTION
 THE POSITION OF ALL POLE LINES, CONDUITS, WATERMANS, SEWERS AND OTHER UNDERGROUND AND OVERGROUND UTILITIES AND STRUCTURES IS NOT NECESSARILY SHOWN ON THE CONTRACT DRAWINGS, AND WHERE SHOWN, THE ACCURACY OF THE POSITION OF SUCH UTILITIES AND STRUCTURES IS NOT GUARANTEED. BEFORE STARTING WORK, DETERMINE THE EXACT LOCATION OF ALL SUCH UTILITIES AND STRUCTURES AND ASSUME ALL LIABILITY FOR DAMAGE TO THEM.

JOB BENCH MARK JBM ▲
 TOP OF HEAD OF MAGNETIC NAIL SET IN SIDE OF CONCRETE SIGN
 BASE 0.2± ABOVE GRADE ELEVATION=120.77
 NORTHING=5014575.29 EASTING=349007.23

TOPOGRAPHIC INFORMATION
 PART OF LOT 12, CONCESSION 12, GEOGRAPHIC TOWNSHIP OF GOULBOURN, CITY OF OTTAWA.
 TOPOGRAPHIC INFORMATION PROVIDED BY FAIRHALL MOFFATT & WOODLAND LIMITED O.L.S (TP3882) SURVEY DATED JANUARY 14, 2020.
 SITE GRID SYSTEM NTM NAD 83, ZONE 9.

REV	REVISION DESCRIPTION	DATE	BY	APPD
3	REVISED AS PER CITY COMMENTS	14/10/22	AC	BMT
2	ISSUED FOR APPROVAL	12/05/22	SK	BMT
1	SUBMISSION NO.2	27/04/21	SK	BMT



DESIGNED BY: [Signature]
 REVIEWED BY: [Signature]

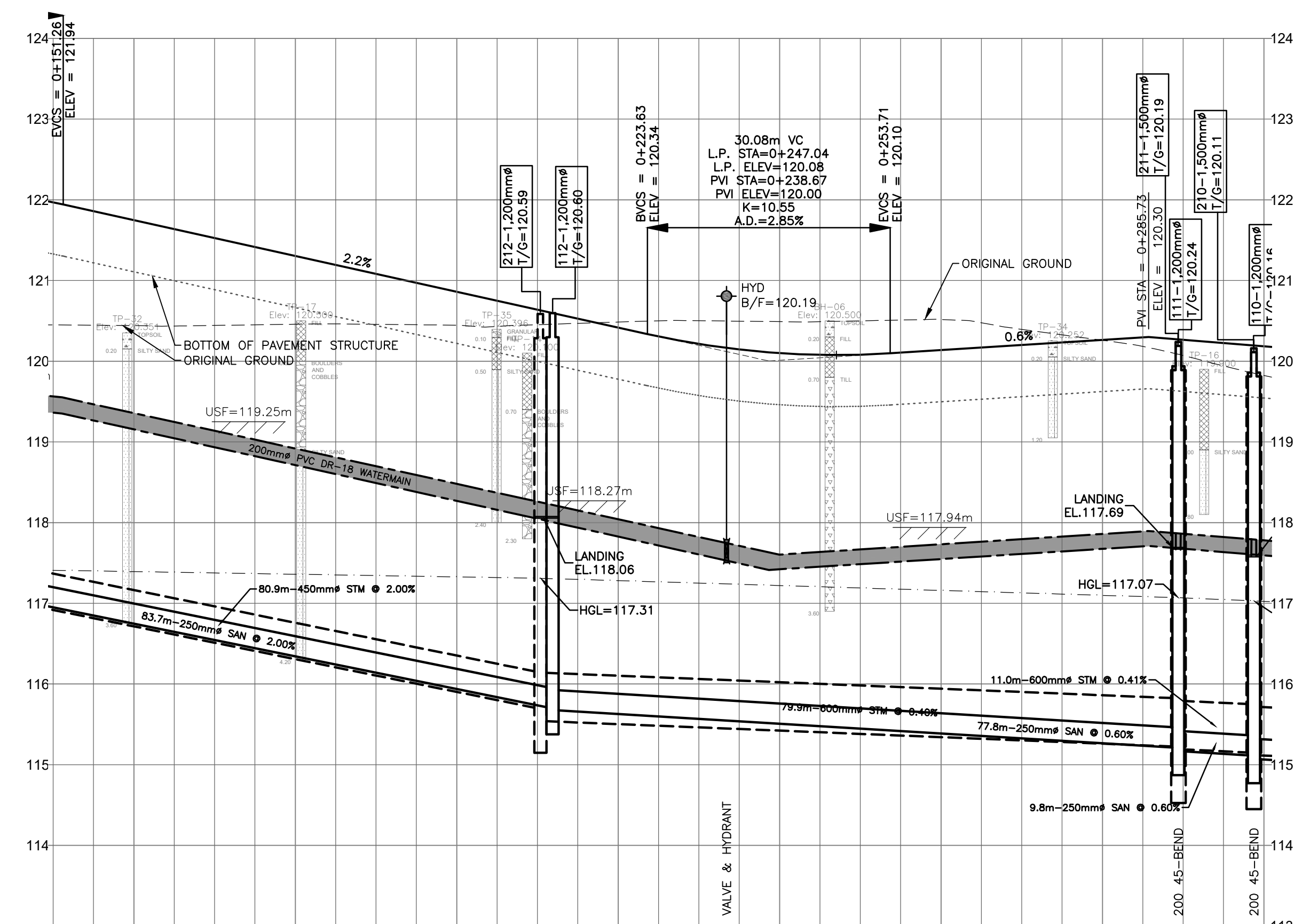
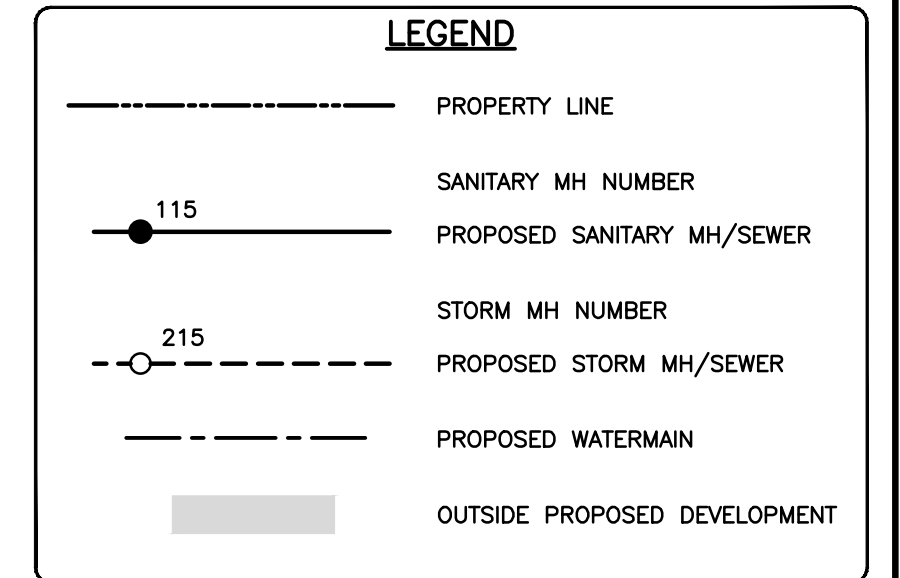
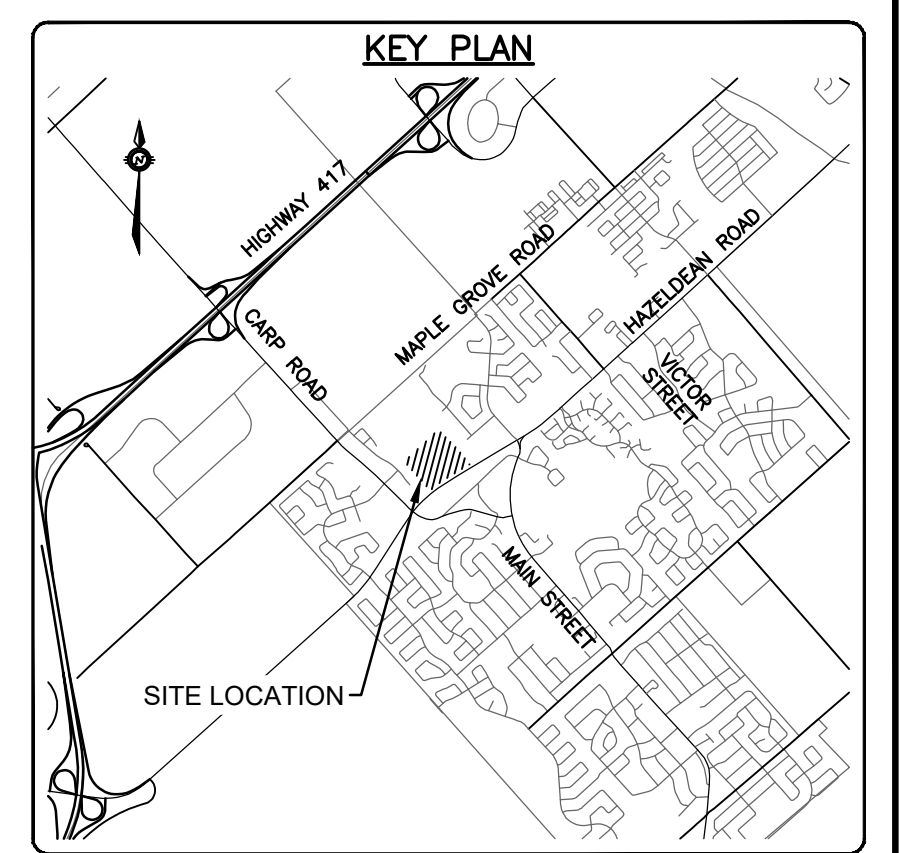
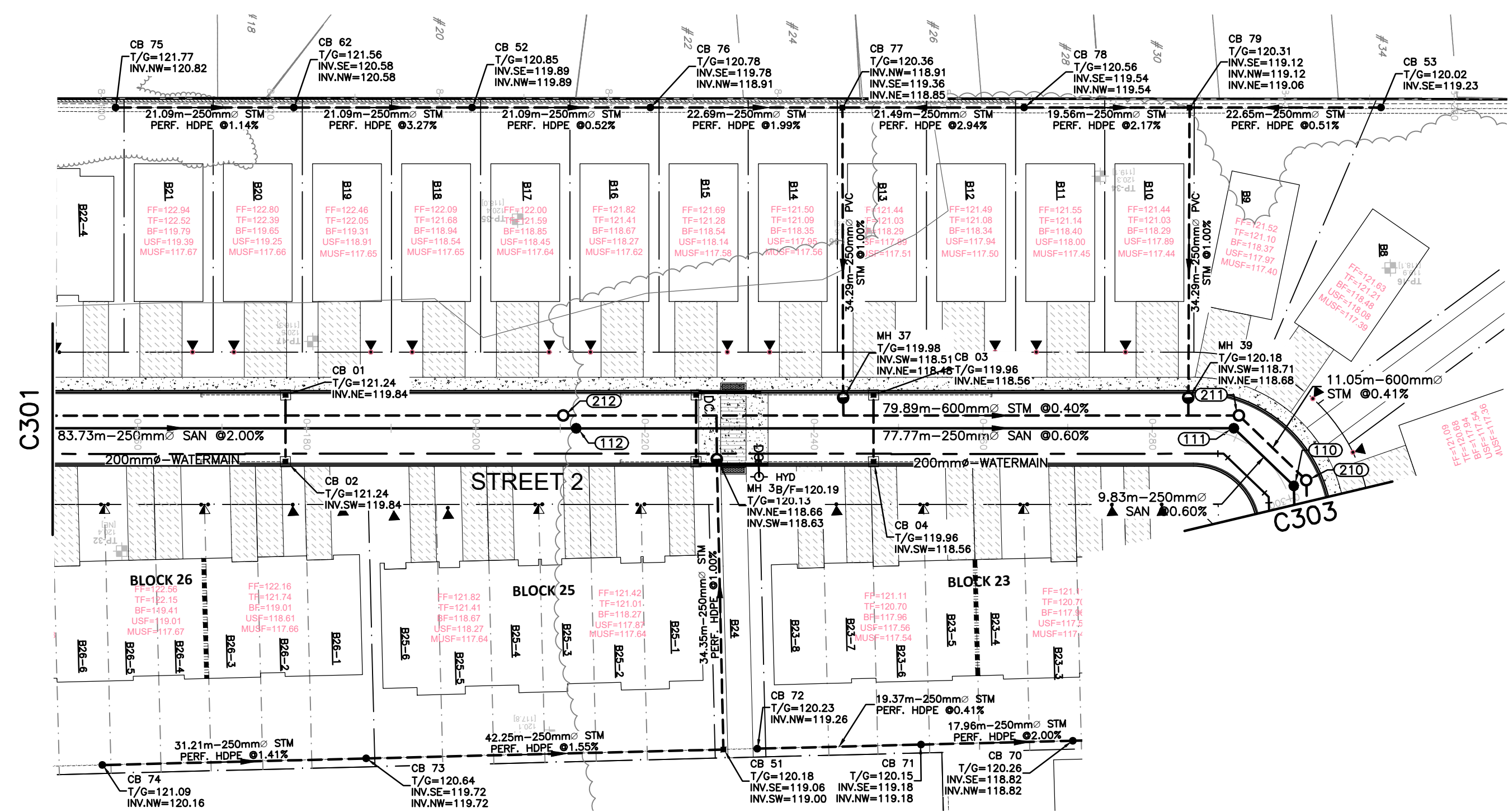
LATITUDE HOMES
 1202 CARP ROAD
 STITTVILLE, ON. K2S 1B9

exp.
 exp Services Inc.
 1-1-813-688-1899 | F-1-613-225-7330
 305 Commerce Drive, Unit 100
 Ottawa, ON K2B 8H6
 Canada
 www.exp.com

• BUILDINGS • EARTH & ENVIRONMENT • ENERGY • INDUSTRIAL • INFRASTRUCTURE • SUSTAINABILITY •

PROJECT	HAZELDEAN HORIZONS 6171 HAZELDEAN ROAD OTTAWA, ONTARIO.	PROJECT No. 258780
DESIGN	JLF	SURVEY 238800-FM-W
CHECKED	BMT	DATE 24/07/20
CAD	SK	DRAWING No. C301
PROJECT MANAGER	JLF	
APPROVED	BMT	

**PLAN AND PROFILE, STREET 2
 STA.0+000 TO STA.0+150**



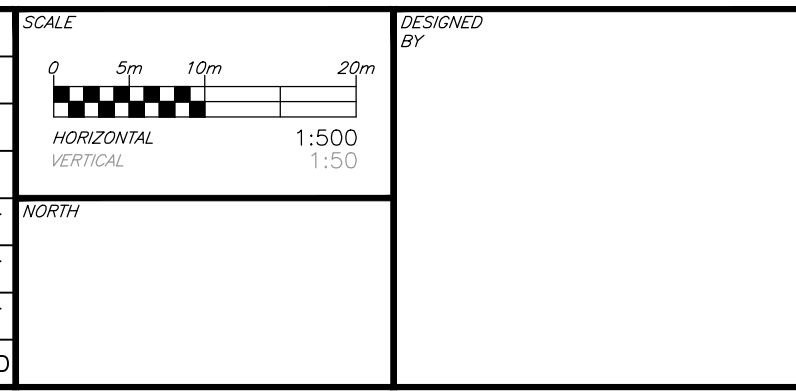
STATION	ELEVATIONS PROPOSED	ELEVATIONS EXISTING	TOP OF WATERMAIN ELEVATION	STORM SEWER INVERTS	SANITARY SEWER INVERTS	CHAINAGE	ELEVATIONS PROPOSED	ELEVATIONS EXISTING	TOP OF WATERMAIN ELEVATION	STORM SEWER INVERTS	SANITARY SEWER INVERTS	CHAINAGE
0+160	121.97	121.47	119.36	80.9m-450mm ^Ø CONCRETE PIPES 100-D STM Ø 2.00%	83.7m-250 PVC DR-35 SAN Ø 2.00%	0+160	121.97	121.47	117.78	80.9m-450mm ^Ø CONCRETE PIPES 100-D STM Ø 2.00%	83.7m-250 PVC DR-35 SAN Ø 2.00%	0+160
0+180	121.86	121.45	119.36	80.9m-450mm ^Ø CONCRETE PIPES 100-D STM Ø 2.00%	83.7m-250 PVC DR-35 SAN Ø 2.00%	0+180	121.86	121.45	117.78	80.9m-450mm ^Ø CONCRETE PIPES 100-D STM Ø 2.00%	83.7m-250 PVC DR-35 SAN Ø 2.00%	0+180
0+200	121.75	121.44	119.36	80.9m-450mm ^Ø CONCRETE PIPES 100-D STM Ø 2.00%	83.7m-250 PVC DR-35 SAN Ø 2.00%	0+200	121.75	121.44	117.78	80.9m-450mm ^Ø CONCRETE PIPES 100-D STM Ø 2.00%	83.7m-250 PVC DR-35 SAN Ø 2.00%	0+200
0+210.4	121.64	121.43	119.36	80.9m-450mm ^Ø CONCRETE PIPES 100-D STM Ø 2.00%	83.7m-250 PVC DR-35 SAN Ø 2.00%	0+210.4	121.64	121.43	117.78	80.9m-450mm ^Ø CONCRETE PIPES 100-D STM Ø 2.00%	83.7m-250 PVC DR-35 SAN Ø 2.00%	0+210.4
0+211.9	121.53	121.42	119.36	80.9m-450mm ^Ø CONCRETE PIPES 100-D STM Ø 2.00%	83.7m-250 PVC DR-35 SAN Ø 2.00%	0+211.9	121.53	121.42	117.78	80.9m-450mm ^Ø CONCRETE PIPES 100-D STM Ø 2.00%	83.7m-250 PVC DR-35 SAN Ø 2.00%	0+211.9
0+220	121.42	121.41	119.36	80.9m-450mm ^Ø CONCRETE PIPES 100-D STM Ø 2.00%	83.7m-250 PVC DR-35 SAN Ø 2.00%	0+220	121.42	121.41	117.78	80.9m-450mm ^Ø CONCRETE PIPES 100-D STM Ø 2.00%	83.7m-250 PVC DR-35 SAN Ø 2.00%	0+220
0+233.4	121.30	121.29	119.36	80.9m-450mm ^Ø CONCRETE PIPES 100-D STM Ø 2.00%	83.7m-250 PVC DR-35 SAN Ø 2.00%	0+233.4	121.30	121.29	117.78	80.9m-450mm ^Ø CONCRETE PIPES 100-D STM Ø 2.00%	83.7m-250 PVC DR-35 SAN Ø 2.00%	0+233.4
0+240	121.19	121.18	119.36	80.9m-450mm ^Ø CONCRETE PIPES 100-D STM Ø 2.00%	83.7m-250 PVC DR-35 SAN Ø 2.00%	0+240	121.19	121.18	117.78	80.9m-450mm ^Ø CONCRETE PIPES 100-D STM Ø 2.00%	83.7m-250 PVC DR-35 SAN Ø 2.00%	0+240
0+250	121.09	121.08	119.36	80.9m-450mm ^Ø CONCRETE PIPES 100-D STM Ø 2.00%	83.7m-250 PVC DR-35 SAN Ø 2.00%	0+250	121.09	121.08	117.78	80.9m-450mm ^Ø CONCRETE PIPES 100-D STM Ø 2.00%	83.7m-250 PVC DR-35 SAN Ø 2.00%	0+250
0+260	120.97	120.96	119.36	80.9m-450mm ^Ø CONCRETE PIPES 100-D STM Ø 2.00%	83.7m-250 PVC DR-35 SAN Ø 2.00%	0+260	120.97	120.96	117.78	80.9m-450mm ^Ø CONCRETE PIPES 100-D STM Ø 2.00%	83.7m-250 PVC DR-35 SAN Ø 2.00%	0+260
0+280	120.86	120.85	119.36	80.9m-450mm ^Ø CONCRETE PIPES 100-D STM Ø 2.00%	83.7m-250 PVC DR-35 SAN Ø 2.00%	0+280	120.86	120.85	117.78	80.9m-450mm ^Ø CONCRETE PIPES 100-D STM Ø 2.00%	83.7m-250 PVC DR-35 SAN Ø 2.00%	0+280
0+288.4	120.75	120.74	119.36	80.9m-450mm ^Ø CONCRETE PIPES 100-D STM Ø 2.00%	83.7m-250 PVC DR-35 SAN Ø 2.00%	0+288.4	120.75	120.74	117.78	80.9m-450mm ^Ø CONCRETE PIPES 100-D STM Ø 2.00%	83.7m-250 PVC DR-35 SAN Ø 2.00%	0+288.4
0+298.0	120.64	120.63	119.36	80.9m-450mm ^Ø CONCRETE PIPES 100-D STM Ø 2.00%	83.7m-250 PVC DR-35 SAN Ø 2.00%	0+298.0	120.64	120.63	117.78	80.9m-450mm ^Ø CONCRETE PIPES 100-D STM Ø 2.00%	83.7m-250 PVC DR-35 SAN Ø 2.00%	0+298.0
0+300	120.53	120.52	119.36	80.9m-450mm ^Ø CONCRETE PIPES 100-D STM Ø 2.00%	83.7m-250 PVC DR-35 SAN Ø 2.00%	0+300	120.53	120.52	117.78	80.9m-450mm ^Ø CONCRETE PIPES 100-D STM Ø 2.00%	83.7m-250 PVC DR-35 SAN Ø 2.00%	0+300
0+303	120.42	120.41	119.36	80.9m-450mm ^Ø CONCRETE PIPES 100-D STM Ø 2.00%	83.7m-250 PVC DR-35 SAN Ø 2.00%	0+303	120.42	120.41	117.78	80.9m-450mm ^Ø CONCRETE PIPES 100-D STM Ø 2.00%	83.7m-250 PVC DR-35 SAN Ø 2.00%	0+303
0+305	120.31	120.30	119.36	80.9m-450mm ^Ø CONCRETE PIPES 100-D STM Ø 2.00%	83.7m-250 PVC DR-35 SAN Ø 2.00%	0+305	120.31	120.30	117.78	80.9m-450mm ^Ø CONCRETE PIPES 100-D STM Ø 2.00%	83.7m-250 PVC DR-35 SAN Ø 2.00%	0+305
0+307	120.21	120.20	119.36	80.9m-450mm ^Ø CONCRETE PIPES 100-D STM Ø 2.00%	83.7m-250 PVC DR-35 SAN Ø 2.00%	0+307	120.21	120.20	117.78	80.9m-450mm ^Ø CONCRETE PIPES 100-D STM Ø 2.00%	83.7m-250 PVC DR-35 SAN Ø 2.00%	0+307
0+310	120.15	120.14	119.36	80.9m-450mm ^Ø CONCRETE PIPES 100-D STM Ø 2.00%	83.7m-250 PVC DR-35 SAN Ø 2.00%	0+310	120.15	120.14	117.78	80.9m-450mm ^Ø CONCRETE PIPES 100-D STM Ø 2.00%	83.7m-250 PVC DR-35 SAN Ø 2.00%	0+310
0+315	120.10	120.09	119.36	80.9m-450mm ^Ø CONCRETE PIPES 100-D STM Ø 2.00%	83.7m-250 PVC DR-35 SAN Ø 2.00%	0+315	120.10	120.09	117.78	80.9m-450mm ^Ø CONCRETE PIPES 100-D STM Ø 2.00%	83.7m-250 PVC DR-35 SAN Ø 2.00%	0+315
0+320	120.08	120.07	119.36	80.9m-450mm ^Ø CONCRETE PIPES 100-D STM Ø 2.00%	83.7m-250 PVC DR-35 SAN Ø 2.00%	0+320	120.08	120.07	117.78	80.9m-450mm ^Ø CONCRETE PIPES 100-D STM Ø 2.00%	83.7m-250 PVC DR-35 SAN Ø 2.00%	0+320
0+325	120.06	120.05	119.36	80.9m-450mm ^Ø CONCRETE PIPES 100-D STM Ø 2.00%	83.7m-250 PVC DR-35 SAN Ø 2.00%	0+325	120.06	120.05	117.78	80.9m-450mm ^Ø CONCRETE PIPES 100-D STM Ø 2.00%	83.7m-250 PVC DR-35 SAN Ø 2.00%	0+325
0+330	120.11	120.10	119.36	80.9m-450mm ^Ø CONCRETE PIPES 100-D STM Ø 2.00%	83.7m-250 PVC DR-35 SAN Ø 2.00%	0+330	120.11	120.10	117.78	80.9m-450mm ^Ø CONCRETE PIPES 100-D STM Ø 2.00%	83.7m-250 PVC DR-35 SAN Ø 2.00%	0+330
0+335	120.14	120.13	119.36	80.9m-450mm ^Ø CONCRETE PIPES 100-D STM Ø 2.00%	83.7m-250 PVC DR-35 SAN Ø 2.00%	0+335	120.14	120.13	117.78	80.9m-450mm ^Ø CONCRETE PIPES 100-D STM Ø 2.00%	83.7m-250 PVC DR-35 SAN Ø 2.00%	0+335
0+340	120.17	120.16	119.36	80.9m-450mm ^Ø CONCRETE PIPES 100-D STM Ø 2.00%	83.7m-250 PVC DR-35 SAN Ø 2.00%	0+340	120.17	120.16	117.78	80.9m-450mm ^Ø CONCRETE PIPES 100-D STM Ø 2.00%	83.7m-250 PVC DR-35 SAN Ø 2.00%	0+340
0+345	120.20	120.19	119.36	80.9m-450mm ^Ø CONCRETE PIPES 100-D STM Ø 2.00%	83.7m-250 PVC DR-35 SAN Ø 2.00%	0+345	120.20	120.19	117.78	80.9m-450mm ^Ø CONCRETE PIPES 100-D STM Ø 2.00%	83.7m-250 PVC DR-35 SAN Ø 2.00%	0+345
0+350	120.23	120.22	119.36	80.9m-450mm ^Ø CONCRETE PIPES 100-D STM Ø 2.00%	83.7m-250 PVC DR-35 SAN Ø 2.00%	0+350	120.23	120.22	117.78	80.9m-450mm ^Ø CONCRETE PIPES 100-D STM Ø 2.00%	83.7m-250 PVC DR-35 SAN Ø 2.00%	0+350
0+355	120.26	120.25	119.36	80.9m-450mm ^Ø CONCRETE PIPES 100-D STM Ø 2.00%	83.7m-250 PVC DR-35 SAN Ø 2.00%	0+355	120.26	120.25	117.78	80.9m-450mm ^Ø CONCRETE PIPES 100-D STM Ø 2.00%	83.7m-250 PVC DR-35 SAN Ø 2.00%	0+355
0+360	120.30	120.29	119.36	80.9m-450mm ^Ø CONCRETE PIPES 100-D STM Ø 2.00%	83.7m-250 PVC DR-35 SAN Ø 2.00%	0+360	120.30	120.29	117.78	80.9m-450mm ^Ø CONCRETE PIPES 100-D STM Ø 2.00%	83.7m-250 PVC DR-35 SAN Ø 2.00%	0+360
0+365	120.27	120.26	119.36	80.9m-450mm ^Ø CONCRETE PIPES 100-D STM Ø 2.00%	83.7m-250 PVC DR-35 SAN Ø 2.00%	0+365	120.27	120.26	117.78	80.9m-450mm ^Ø CONCRETE PIPES 100-D STM Ø 2.00%	83.7m-250 PVC DR-35 SAN Ø 2.00%	0+365
0+370	120.22	120.21	119.36	80.9m-450mm ^Ø CONCRETE PIPES 100-D STM Ø 2.00%	83.7m-250 PVC DR-35 SAN Ø 2.00%	0+370	120.22	120.21	117.78	80.9m-450mm ^Ø CONCRETE PIPES 100-D STM Ø 2.00%	83.7m-250 PVC DR-35 SAN Ø 2.00%	0+370
0+375	120.18	120.17	119.36	80.9m-450mm ^Ø CONCRETE PIPES 100-D STM Ø 2.00%	83.7m-250 PVC DR-35 SAN Ø 2.00%	0+375	120.18	120.17	117.78	80.9m-450mm ^Ø CONCRETE PIPES 100-D STM Ø 2.00%	83.7m-250 PVC DR-35 SAN Ø 2.00%	0+375

CAUTION: THE POSITION OF ALL POLE LINES, CONDUITS, WATERMANS, SEWERS AND OTHER UNDERGROUND AND OVERGROUND UTILITIES AND STRUCTURES IS NOT NECESSARILY SHOWN ON THE CONTRACT DRAWINGS, AND WHERE SHOWN, THE ACCURACY OF THE POSITION OF SUCH UTILITIES AND STRUCTURES IS NOT GUARANTEED. BEFORE STARTING WORK, DETERMINE THE EXACT LOCATION OF ALL SUCH UTILITIES AND STRUCTURES AND ASSUME ALL LIABILITY FOR DAMAGE TO THEM.

CAUTION
 THE POSITION OF ALL POLE LINES, CONDUITS, WATERMANS, SEWERS AND OTHER UNDERGROUND AND OVERGROUND UTILITIES AND STRUCTURES IS NOT NECESSARILY SHOWN ON THE CONTRACT DRAWINGS, AND WHERE SHOWN, THE ACCURACY OF THE POSITION OF SUCH UTILITIES AND STRUCTURES IS NOT GUARANTEED. BEFORE STARTING WORK, DETERMINE THE EXACT LOCATION OF ALL SUCH UTILITIES AND STRUCTURES AND ASSUME ALL LIABILITY FOR DAMAGE TO THEM.

JOB BENCH MARK JBM ▲
 TOP OF HEAD OF MAGNETIC NAIL SET IN SIDE OF CONCRETE SIGN
 BASE 0.2± ABOVE GRADE ELEVATION=120.77
 NORTHING=5014575.29 EASTING=349007.23
TOPOGRAPHIC INFORMATION
 PART OF LOT 12, CONCESSION 12, GEOGRAPHIC TOWNSHIP OF GOULBOURN, CITY OF OTTAWA.
 TOPOGRAPHIC INFORMATION PROVIDED BY FAIRHALL MOFFATT & WOODLAND LIMITED O.L.S (TP3862) SURVEY DATED JANUARY 14, 2020.
 SITE GRID SYSTEM MTM NAD 83, ZONE 9.

REV	REVISION DESCRIPTION	DATE	BY	APPD
3	REVISED AS PER CITY COMMENTS	14/10/22	AC	BMT
2	ISSUED FOR APPROVAL	12/05/22	SK	BMT
1	SUBMISSION NO.2	27/04/21	SK	BMT



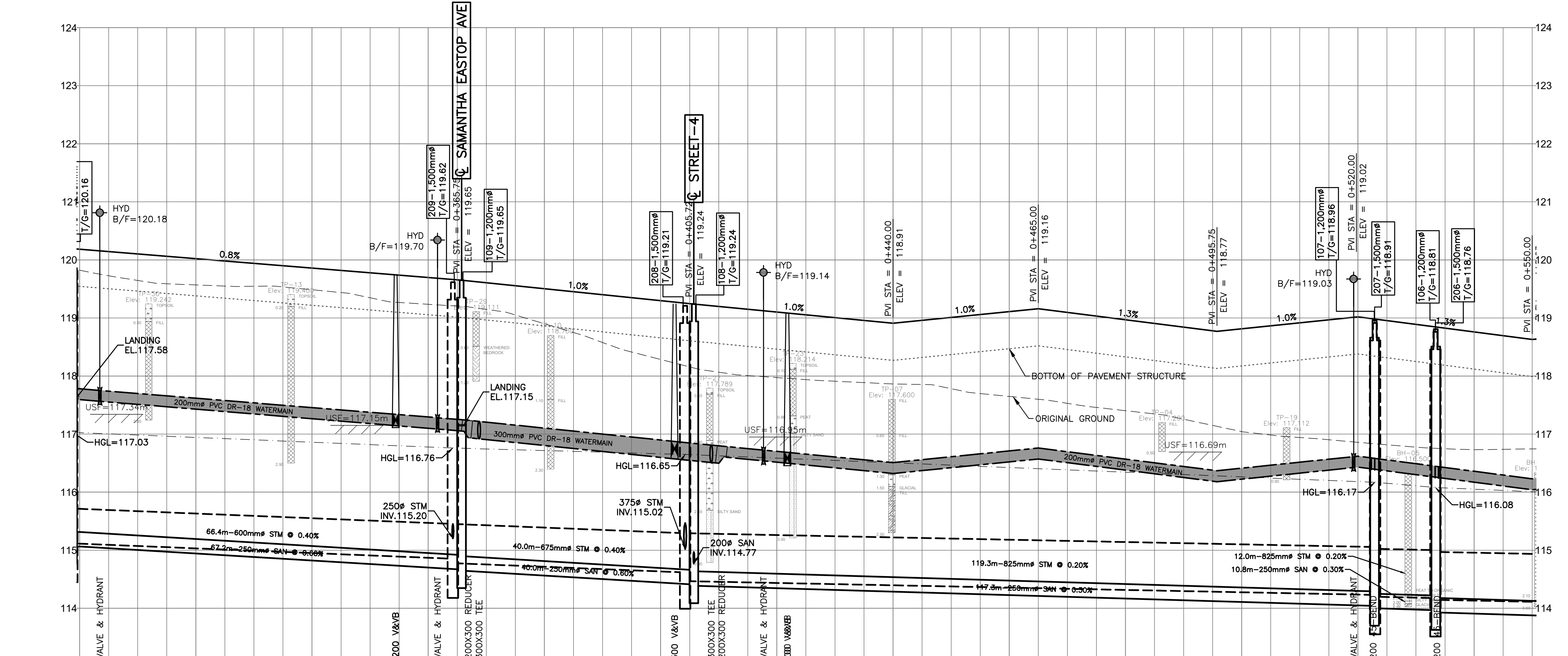
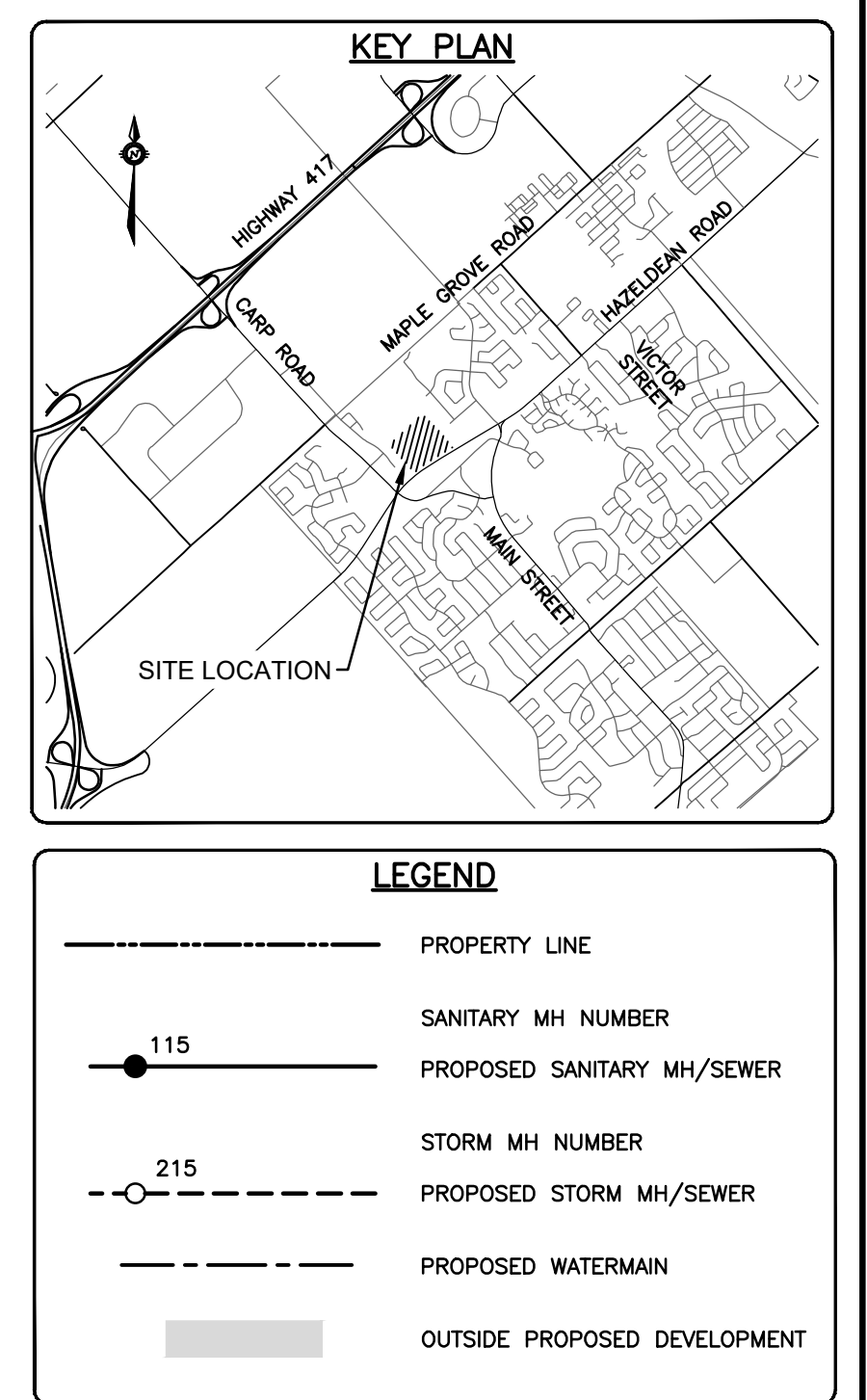
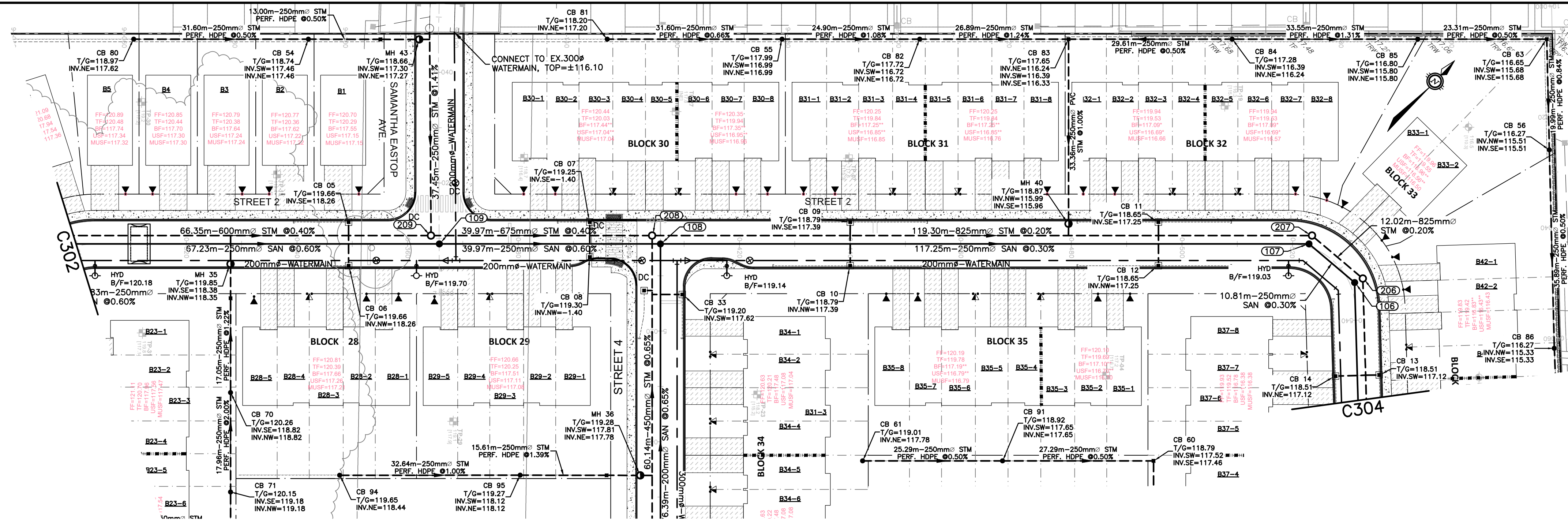
DESIGNED BY: [Blank]
 REVIEWED BY: [Blank]

LATITUDE HOMES
 1202 CARP ROAD
 STITTSVILLE, ON. K2S 1B9

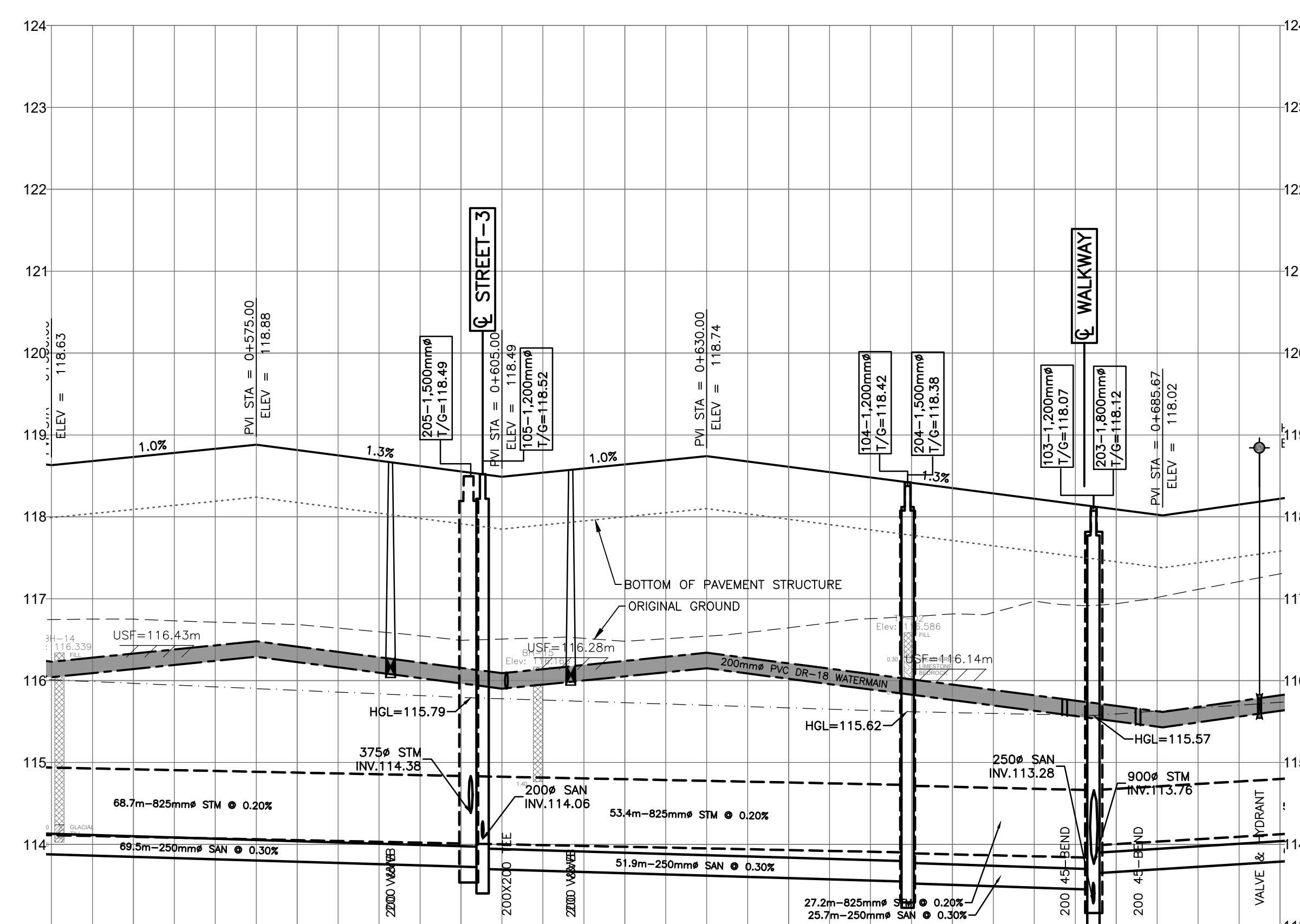
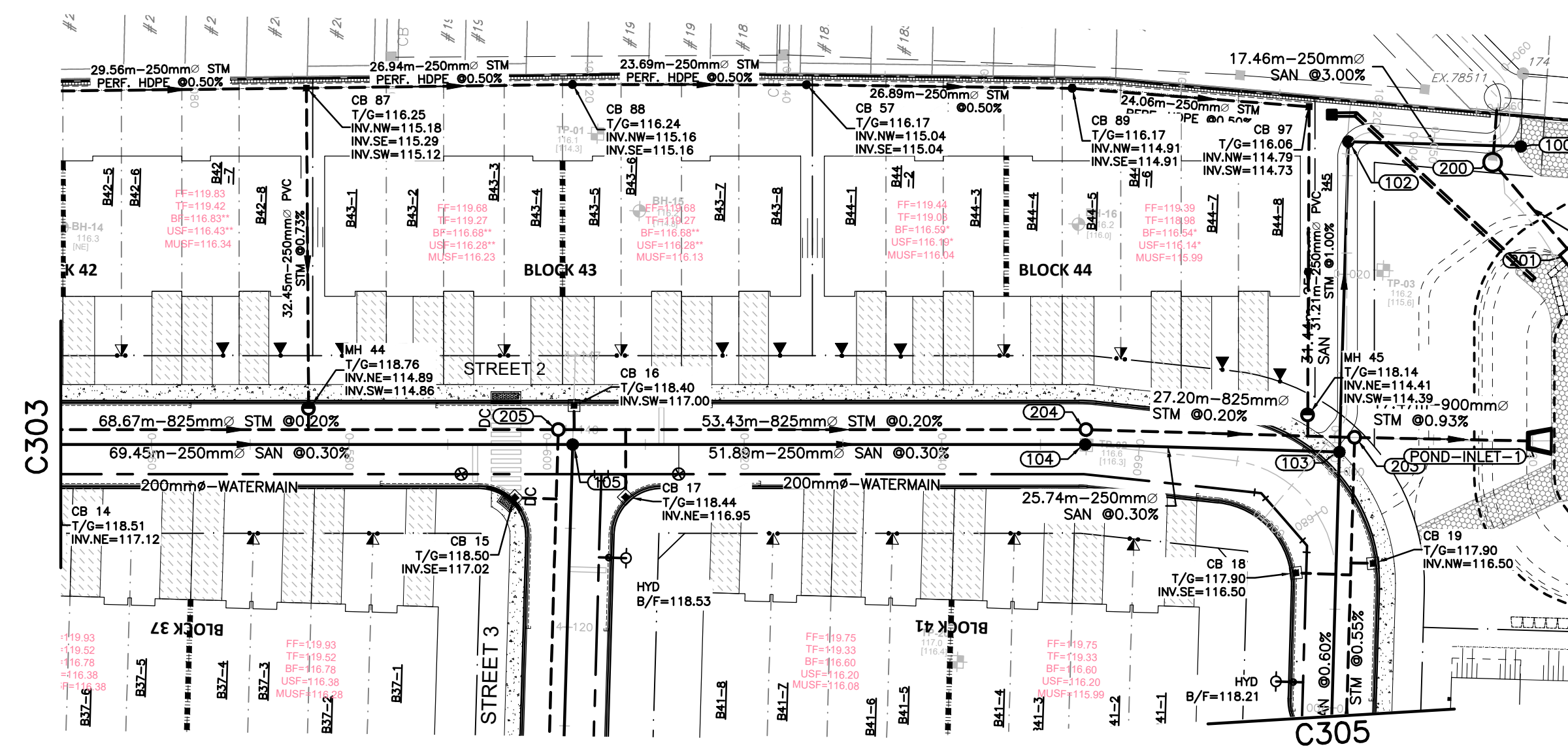
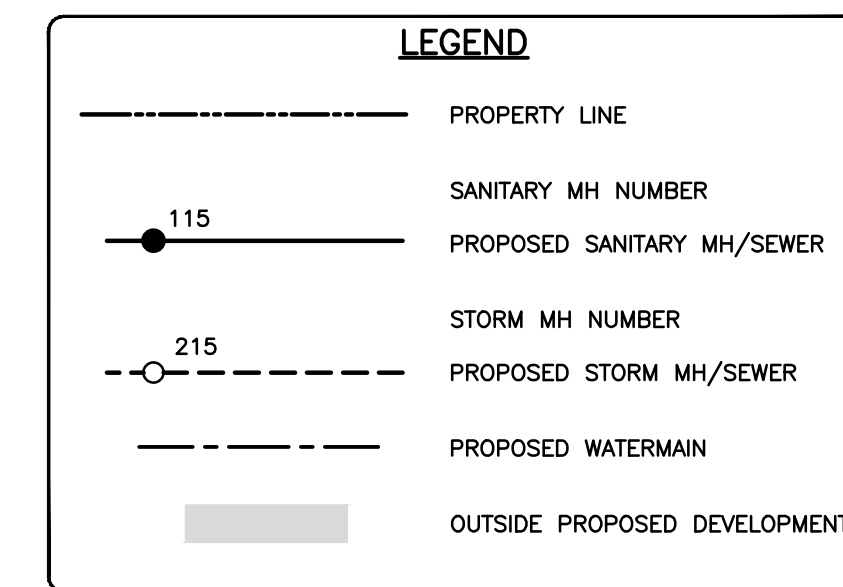
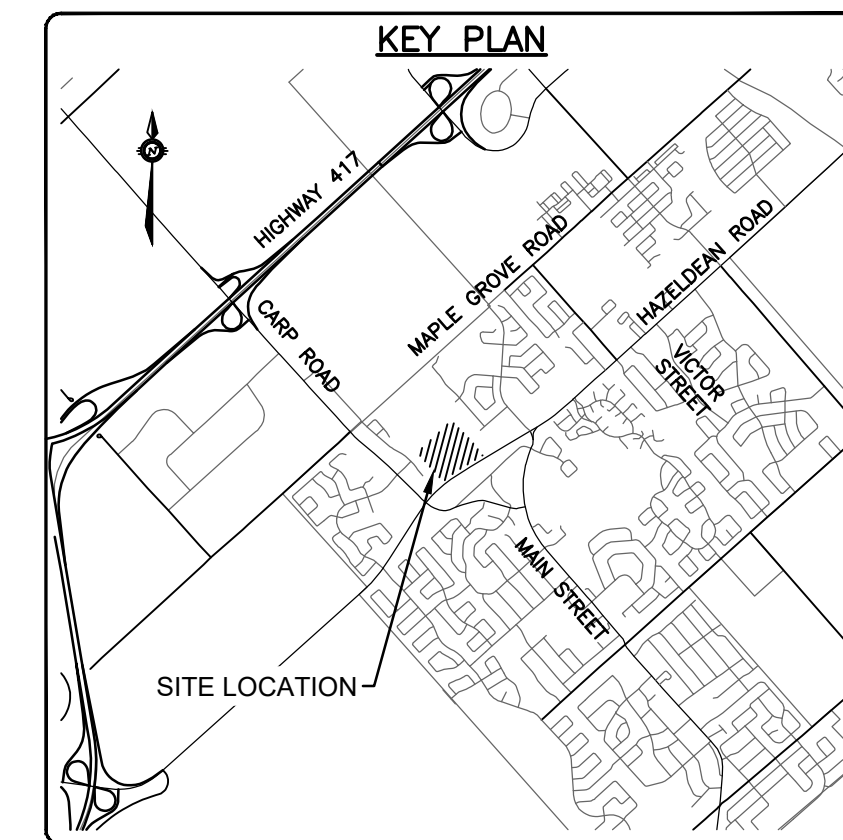
exp. Services Inc.
 1-877-668-1899 | F+1-613-225-7330
 300 Commerce Drive, Unit 100
 Ottawa, ON K2B 8H6
 Canada
 www.exp.com

• BUILDINGS • EARTH & ENVIRONMENT • ENERGY •
 • INDUSTRIAL • INFRASTRUCTURE • SUSTAINABILITY •

BASEPLAN	PROJECT	PROJECT No.
SK	HAZELDEAN HORIZONS	258780
JLF	6171 HAZELDEAN ROAD	SURVEY: 238800-FM-W
BMT	OTTAWA, ONTARIO.	DATE: 24/07/20
SK	PLAN AND PROFILE, STREET 2	DRAWING No.
JLF	STA.0+150 TO STA.0+300	C302
BMT		



CHAINAGE	SANITARY SEWER INVERTS	STORM SEWER INVERTS	TOP OF WATERMAIN ELEVATION	ELEVATIONS PROPOSED EXISTING
0+303.5			117.75	117.75
0+320			120.10	120.10
			120.06	120.06
			120.02	120.02
			119.98	119.98
			119.94	119.94
			119.90	119.90
			119.86	119.86
			119.82	119.82
			119.78	119.78
			119.74	119.74
			119.70	119.70
			119.66	119.66
			119.62	119.62
			119.58	119.58
			119.54	119.54
			119.50	119.50
			119.45	119.45
			119.40	119.40
			119.35	119.35
			119.30	119.30
			119.25	119.25
			119.20	119.20
			119.15	119.15
			119.10	119.10
			119.05	119.05
			119.01	119.01
			118.96	118.96
			118.91	118.91
			118.87	118.87
			118.82	118.82
			118.78	118.78
			118.74	118.74
			118.69	118.69
			118.64	118.64
			118.59	118.59
			118.54	118.54
			118.49	118.49
			118.44	118.44
			118.39	118.39
			118.34	118.34
			118.29	118.29
			118.24	118.24
			118.19	118.19
			118.14	118.14
			118.09	118.09
			118.04	118.04
			117.99	117.99
			117.94	117.94
			117.89	117.89
			117.84	117.84
			117.79	117.79
			117.74	117.74
			117.69	117.69
			117.64	117.64
			117.59	117.59
			117.54	117.54
			117.49	117.49
			117.44	117.44
			117.39	117.39
			117.34	117.34
			117.29	117.29
			117.24	117.24
			117.19	117.19
			117.14	117.14
			117.09	117.09
			117.04	117.04
			116.99	116.99
			116.94	116.94
			116.89	116.89
			116.84	116.84
			116.79	116.79
			116.74	116.74
			116.69	116.69
			116.64	116.64
			116.59	116.59
			116.54	116.54
			116.49	116.49
			116.44	116.44
			116.39	116.39
			116.34	116.34
			116.29	116.29
			116.24	116.24
			116.19	116.19
			116.14	116.14
			116.09	116.09
			116.04	116.04
			115.99	115.99
			115.94	115.94
			115.89	115.89
			115.84	115.84
			115.79	115.79
			115.74	115.74
			115.69	115.69
			115.64	115.64
			115.59	115.59
			115.54	115.54
			115.49	115.49
			115.44	115.44
			115.39	115.39
			115.34	115.34
			115.29	115.29
			115.24	115.24
			115.19	115.19
			115.14	115.14
			115.09	115.09
			115.04	115.04
			114.99	114.99
			114.94	114.94
			114.89	114.89
			114.84	114.84
			114.79	114.79
			114.74	114.74
			114.69	114.69
			114.64	114.64
			114.59	114.59
			114.54	114.54
			114.49	114.49
			114.44	114.44
			114.39	114.39
			114.34	114.34
			114.29	114.29
			114.24	114.24
			114.19	114.19
			114.14	114.14
			114.09	114.09
			114.04	114.04
			113.99	113.99
			113.94	113.94
			113.89	113.89
			113.84	113.84
			113.79	113.79
			113.74	113.74
			113.69	113.69
			113.64	113.64
			113.59	113.59
			113.54	113.54
			113.49	113.49
			113.44	113.44
			113.39	113.39
			113.34	113.34
			113.29	113.29
			113.24	113.24
			113.19	113.19
			113.14	113.14
			113.09	113.09
			113.04	113.04
			112.99	112.99
			112.94	112.94
			112.89	112.89
			112.84	112.84
			112.79	112.79
			112.74	112.74
			112.69	112.69
			112.64	112.64
			112.59	112.59
			112.54	112.54
			112.49	112.49
			112.44	112.44
			112.39	112.39
			112.34	112.34
			112.29	112.29
			112.24	112.24
			112.19	112.19
			112.14	112.14
			112.09	112.09
			112.04	112.04
			111.99	111.99
			111.94	111.94
			111.89	111.89
			111.84	111.84
			111.79	111.79
			111.74	111.74
			111.69	111.69
			111.64	111.64
			111.59	111.59
			111.54	111.54
			111.49	111.49
			111.44	111.44
			111.39	111.39
			111.34	111.34
			111.29	111.29
			111.24	111.24
			111.19	111.19
			111.14	111.14
			111.09	111.09
			111.04	111.04
			110.99	110.99
			110.94	110.94
			110.89	110.89
			110.84	110.84
			110.79	110.79
			110.74	110.74
			110.69	110.69
			110.64	110.64
			110.59	110.59
			110.54	110.54
			110.49	110.49
			110.44	110.44
			110.39	110.39
			110.34	110.34
			110.29	110.29
			110.24	110.24
			110.19	110.19
			110.14	110.14
			110.09	110.09
			110.04	110.04
			109.99	109.99
			109.94	109.94
			109.89	109.89
			109.84	109.84
			109.79	109.79
			109.74	109.74
			109.69	109.69
			109.64	109.64
			109.59	109.59
			109.54	109.54
			109.49	109.49
			109.44	109.44
			109.39	109.39
			109.34	109.34
			109.29	109.29
			109.24	109.24
			109.19	109.19
			109.14	109.14
			109.09	109.09
			109.04	109.04
			108.99	108.99
			108.94	108.94
			108.89	108.89
			108.84	108.84
			108.79	108.79
			108.74	108.74
			108.69	108.69
			108.64	108.64
			108.59	108.59
			108.54	108.54
			108.49	108.49
			108.44	108.44
			108.39	108.39
			108.34	108.34
			108.29	108.29
			108.24	108.24
			108.19	108.19
			108.14	108.14
			108.09	108.09
			108.04	108.04
			107.99	107.99
			107.94	107.94
			107.89	107.89
			107.84	107.84
			107.79	107.79
			107.74	107.74
			107.69	107.69
			107.64	107.64
			107.59	107.59
			107.54	107.54
			107.49	107.49
			107.44	107.44



CHAINAGE	STORM SEWER INVERTS	SANITARY SEWER INVERTS	TOP OF WATERMAIN ELEVATION	ELEVATIONS PROPOSED EXISTING
0+560	68.7m-825mm ^Ø CONCRETE 100-D STM @ 0.20%	69.5m-250 PVC DR-35 SAN @ 0.30%	116.33	116.69
0+580			116.78	116.68
0+591.4			116.83	116.73
0+600.2			116.88	116.78
0+602.6			116.91	116.83
0+606.6			116.95	116.88
0+613.4			116.97	116.91
0+620			117.01	116.95
0+640			117.04	117.01
0+654.5			117.07	117.04
0+660			117.10	117.07
0+673.7			117.13	117.10
0+680			117.16	117.13
0+682.7			117.19	117.16
0+697.5			117.22	117.19
0+700			117.25	117.22

CAUTION
THE POSITION OF ALL POLE LINES, CONDUITS, WATERMANS, SEWERS AND OTHER UNDERGROUND AND OVERGROUND UTILITIES AND STRUCTURES IS NOT NECESSARILY SHOWN ON THE CONTRACT DRAWINGS, AND WHERE SHOWN, THE ACCURACY OF THE POSITION OF SUCH UTILITIES AND STRUCTURES IS NOT GUARANTEED. BEFORE STARTING WORK, DETERMINE THE EXACT LOCATION OF ALL SUCH UTILITIES AND STRUCTURES AND ASSUME ALL LIABILITY FOR DAMAGE TO THEM.

JOB BENCH MARK JBM ▲
TOP OF HEAD OF MAGNETIC NAIL SET IN SIDE OF CONCRETE SIGN
BASE 0.2± ABOVE GRADE ELEVATION=120.77
NORTHING=5014575.29 EASTING=349007.23

TOPOGRAPHIC INFORMATION
PART OF LOT 12, CONCESSION 12, GEOGRAPHIC TOWNSHIP OF GOULBOURN, CITY OF OTTAWA.
TOPOGRAPHIC INFORMATION PROVIDED BY FAIRHALL MOFFATT & WOODLAND LIMITED O.L.S (P3862) SURVEY DATED JANUARY 14, 2020.
SITE GRID SYSTEM NAD 83, ZONE 9.

REV	REVISION DESCRIPTION	DATE	BY	APPD
3	REVISED AS PER CITY COMMENTS	14/10/22	AC	BMT
2	ISSUED FOR APPROVAL	12/05/22	SK	BMT
1	SUBMISSION NO.2	27/04/21	SK	BMT

SCALE: 1:500
DESIGNED BY: [Signature]
REVIEWED BY: [Signature]

LATITUDE HOMES
1202 CARR ROAD
STITTSVILLE, ON. K2S 1B9

exp Services Inc.
1-813-688-1899 | 1-613-225-7330
205 Colborne Ave., Unit 100
Ottawa, ON K2S 8R6
Canada
www.exp.com

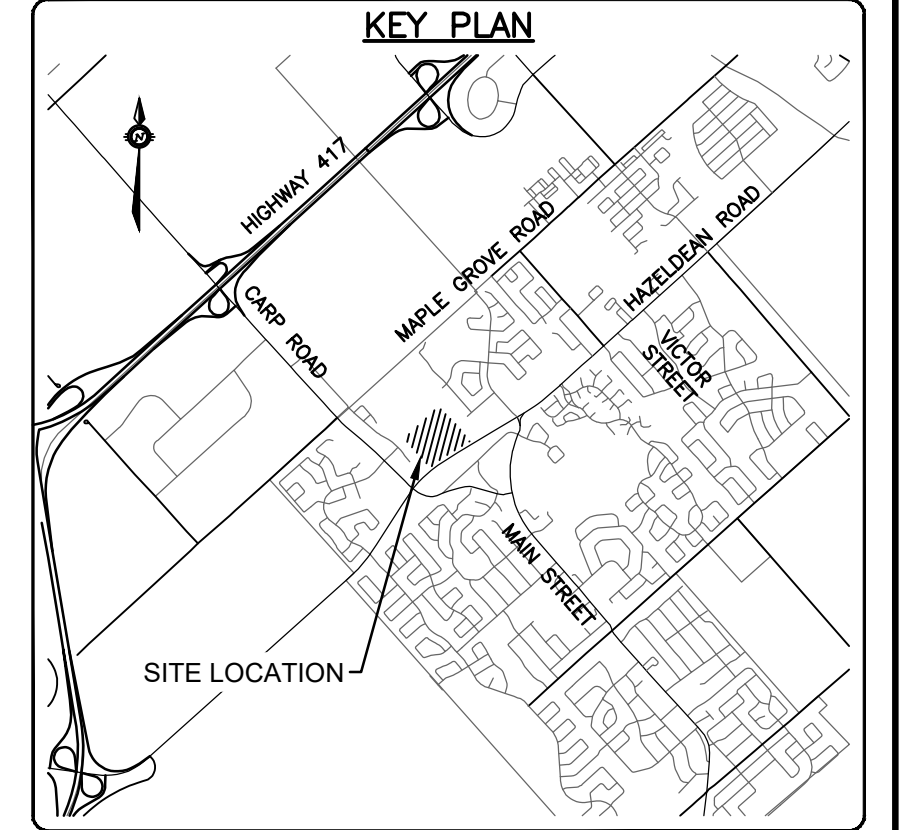
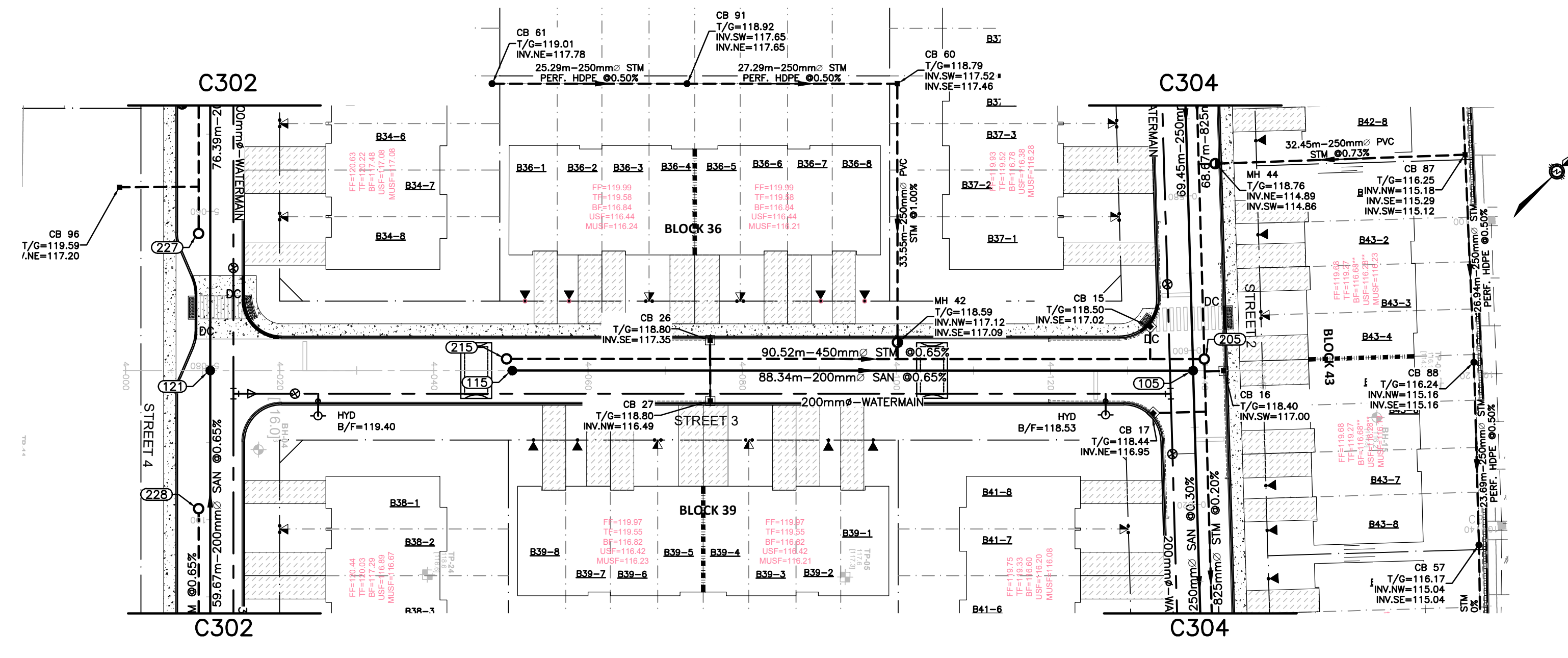
• BUILDINGS • EARTH & ENVIRONMENT • ENERGY •
• INDUSTRIAL • INFRASTRUCTURE • SUSTAINABILITY •

HAZELDEAN HORIZONS
6171 HAZELDEAN ROAD
OTTAWA, ONTARIO.

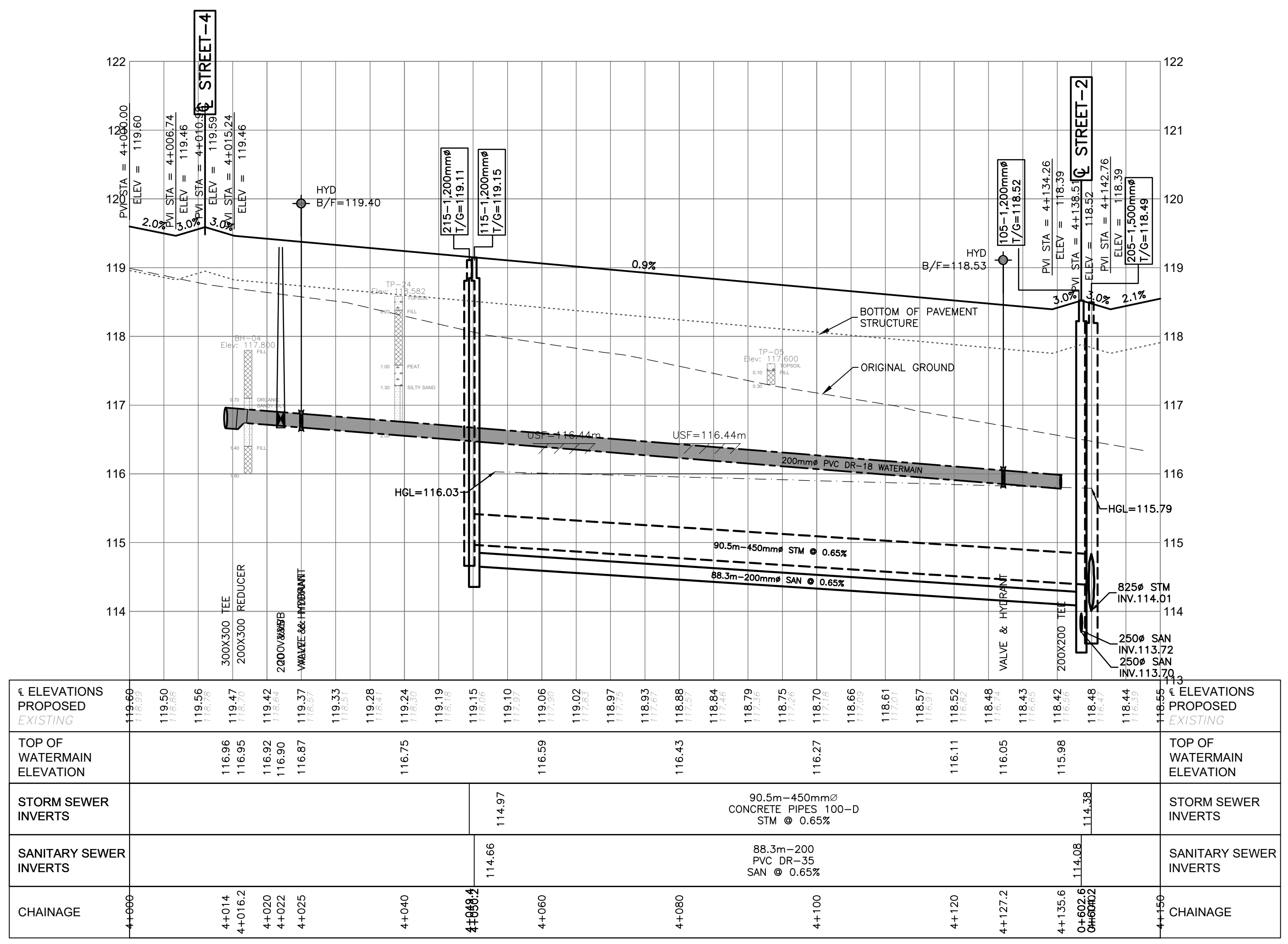
PLAN AND PROFILE, STREET 2
STA.0+550 TO STA.0+700

PROJECT No. 258780
SURVEY: 238800-FMW
DATE: 24/07/20
DRAWING No. C304

Path: V:\proj\2022\22-07-12\121016 Main Printed 10/19/2022 2:08:08 PM Printed by: [Name]
 User: [Name] Date: 10/19/2022 2:08:08 PM
 File: 22-07-12\121016 Main.dwg
 Plot: 22-07-12\121016 Main.dwg
 Plot Device: [Name]
 Plot Style: [Name].plt
 Plot Date: 10/19/2022 2:08:08 PM
 Plot Time: 10/19/2022 2:08:08 PM
 Plot User: [Name]
 Plot Scale: 1:1
 Plot Orientation: [Name]
 Plot Color: [Name]
 Plot Lineweight: [Name]
 Plot Linetype: [Name]
 Plot LinetypeScale: [Name]
 Plot PlotName: [Name]
 Plot PlotStyle: [Name]
 Plot PlotStyleName: [Name]
 Plot PlotStyleScale: [Name]
 Plot PlotStyleScaleName: [Name]
 Plot PlotStyleScaleScale: [Name]
 Plot PlotStyleScaleScaleName: [Name]



LEGEND	
---	PROPERTY LINE
●	SANITARY MH NUMBER
○	PROPOSED SANITARY MH/SEWER
○	STORM MH NUMBER
○	PROPOSED STORM MH/SEWER
---	PROPOSED WATERMAIN
■	OUTSIDE PROPOSED DEVELOPMENT



CHAINAGE	ELEVATIONS PROPOSED EXISTING	TOP OF WATERMAIN ELEVATION	STORM SEWER INVERTS	SANITARY SEWER INVERTS	ELEVATIONS PROPOSED EXISTING	TOP OF WATERMAIN ELEVATION	STORM SEWER INVERTS	SANITARY SEWER INVERTS	CHAINAGE
4+000	119.60	116.89			119.60	116.89			4+000
4+014	119.50	116.95			119.50	116.95			4+014
4+020	119.47	116.92			119.47	116.92			4+020
4+025	119.33	116.87			119.33	116.87			4+025
4+040	119.28	116.75			119.28	116.75			4+040
4+060	119.15	116.63	114.97	114.66	119.15	116.63	114.97	114.66	4+060
4+080	119.10	116.57			119.10	116.57			4+080
4+100	119.05	116.52			119.05	116.52			4+100
4+120	119.02	116.48			119.02	116.48			4+120
4+127.2	118.97	116.43			118.97	116.43			4+127.2
4+135.6	118.93	116.38			118.93	116.38			4+135.6
4+142.76	118.88	116.33			118.88	116.33			4+142.76
4+150	118.84	116.27			118.84	116.27			4+150

Path: \\exp\projects\2022\258780-PMW\Drawings\258780-PMW\258780-PMW.dwg
 User: jfleming
 Date: 2022-07-27 10:10:16 AM
 Plot: 258780-PMW.dwg
 Plot Date: 2022-07-27 10:10:16 AM
 Plot Size: 11.0 x 17.0
 Plot Scale: 1:500
 Plot Orientation: Landscape
 Plot Color: Black
 Plot Lineweight: 0.5
 Plot Linetype: Solid
 Plot Font: Arial
 Plot Font Size: 10
 Plot Font Weight: Normal
 Plot Font Style: Normal
 Plot Font Color: Black
 Plot Font Orientation: Horizontal
 Plot Font Angle: 0
 Plot Font Language: English
 Plot Font Encoding: Windows
 Plot Font Charset: 1
 Plot Font Underline: No
 Plot Font Overline: No
 Plot Font Strikethrough: No
 Plot Font Invert: No
 Plot Font Background: No
 Plot Font Color: Black
 Plot Font Weight: Normal
 Plot Font Style: Normal
 Plot Font Color: Black
 Plot Font Orientation: Horizontal
 Plot Font Angle: 0
 Plot Font Language: English
 Plot Font Encoding: Windows
 Plot Font Charset: 1
 Plot Font Underline: No
 Plot Font Overline: No
 Plot Font Strikethrough: No
 Plot Font Invert: No
 Plot Font Background: No

CAUTION
 THE POSITION OF ALL POLE LINES, CONDUITS, WATERMANS, SEWERS AND OTHER UNDERGROUND AND OVERGROUND UTILITIES AND STRUCTURES IS NOT NECESSARILY SHOWN ON THE CONTRACT DRAWINGS, AND WHERE SHOWN, THE ACCURACY OF THE POSITION OF SUCH UTILITIES AND STRUCTURES IS NOT GUARANTEED. BEFORE STARTING WORK, DETERMINE THE EXACT LOCATION OF ALL SUCH UTILITIES AND STRUCTURES AND ASSUME ALL LIABILITY FOR DAMAGE TO THEM.

JOB BENCH MARK
 TOP OF HEAD OF MAGNETIC NAIL SET IN SIDE OF CONCRETE SIGN
 BASE 0.2± ABOVE GRADE ELEVATION=120.77
 NORTHING=5014575.29 EASTING=349007.23

TOPOGRAPHIC INFORMATION
 PART OF LOT 12, CONCESSION 12, GEOGRAPHIC TOWNSHIP OF GOULBOURN, CITY OF OTTAWA.
 TOPOGRAPHIC INFORMATION PROVIDED BY FAIRHALL MOFFATT & WOODLAND LIMITED O.L.S (TP3862) SURVEY DATED JANUARY 14, 2020.
 SITE GRID SYSTEM MTM NAD 83, ZONE 9.

REV	REVISION DESCRIPTION	DATE	BY	APPD
3	REVISED AS PER CITY COMMENTS	14/10/22	AC	BMT
2	ISSUED FOR APPROVAL	12/05/22	SK	BMT
1	SUBMISSION NO.2	27/04/21	SK	BMT

SCALE

 HORIZONTAL 1:500
 VERTICAL 1:50

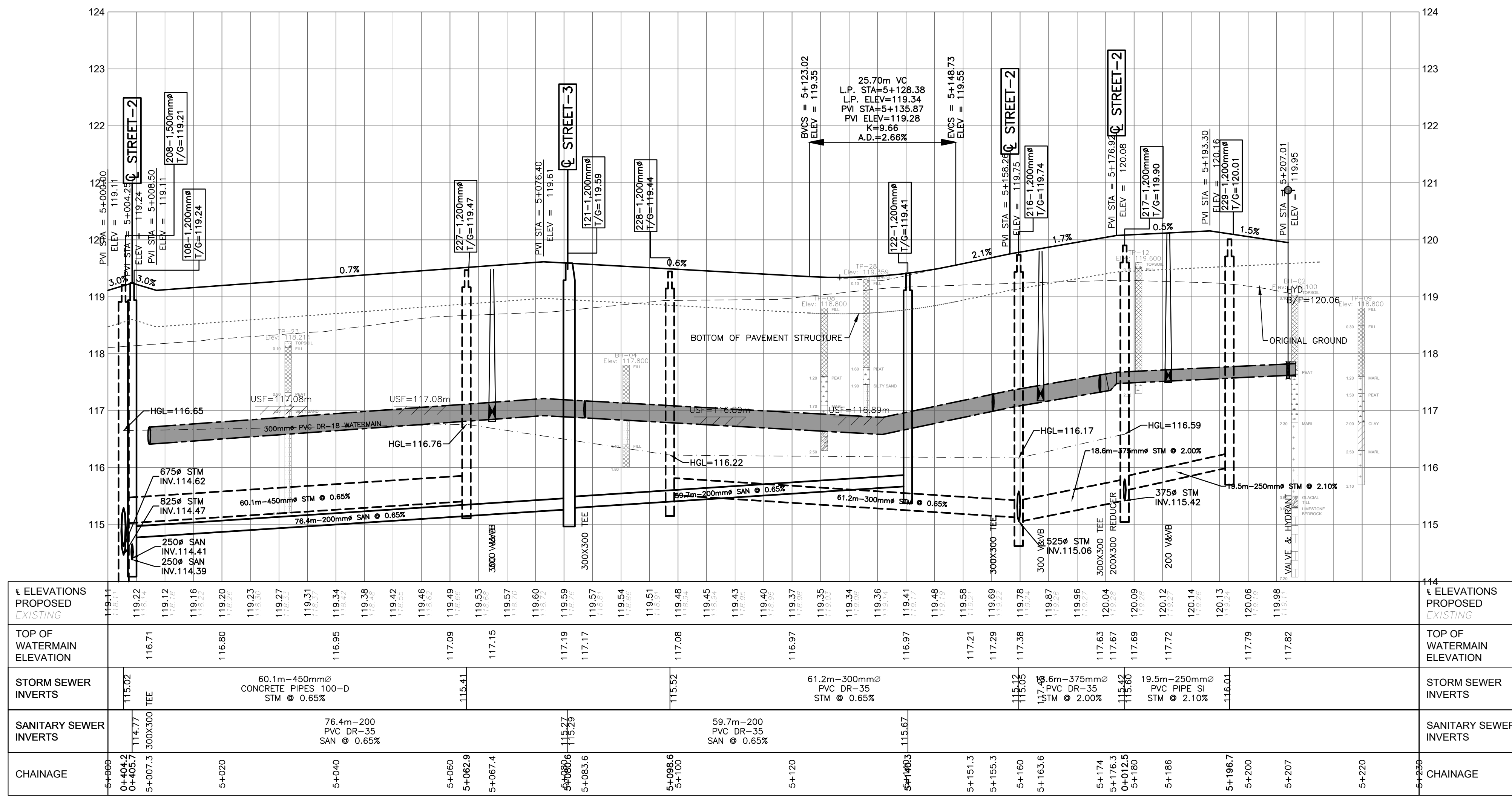
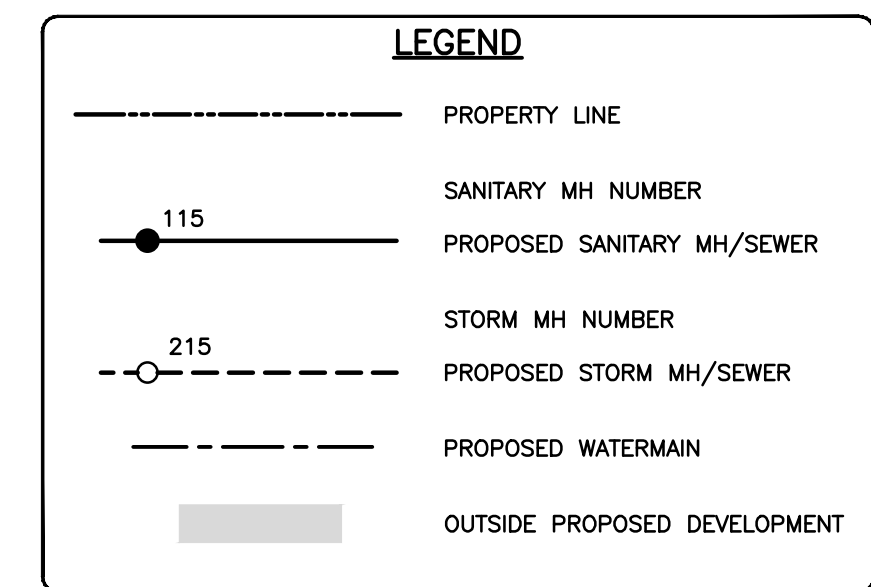
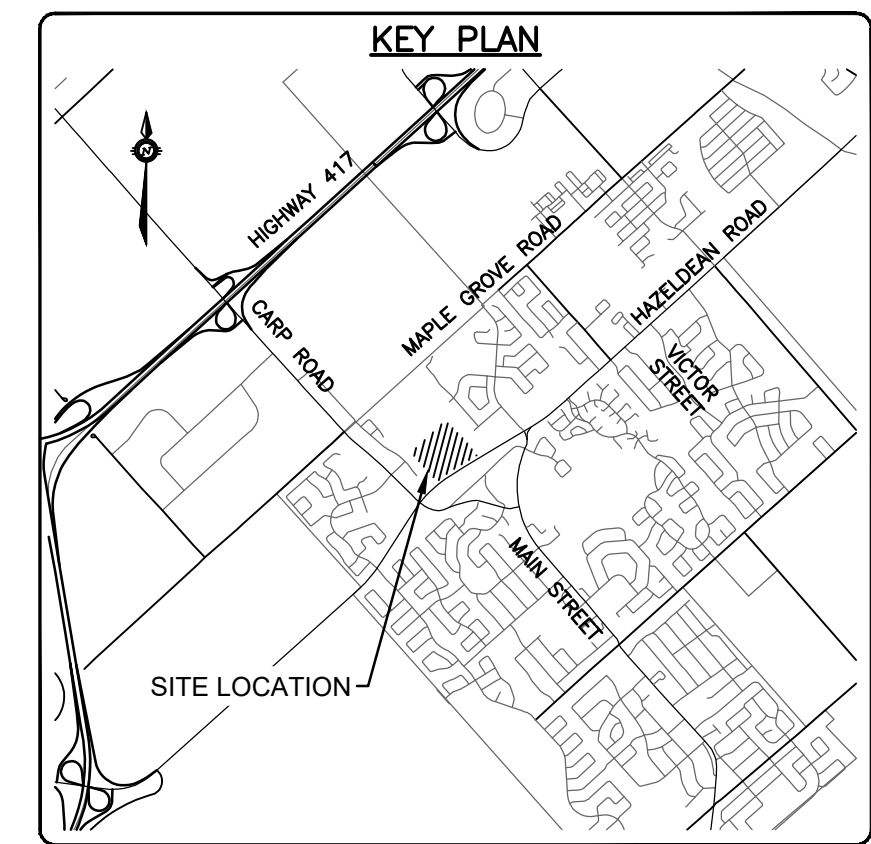
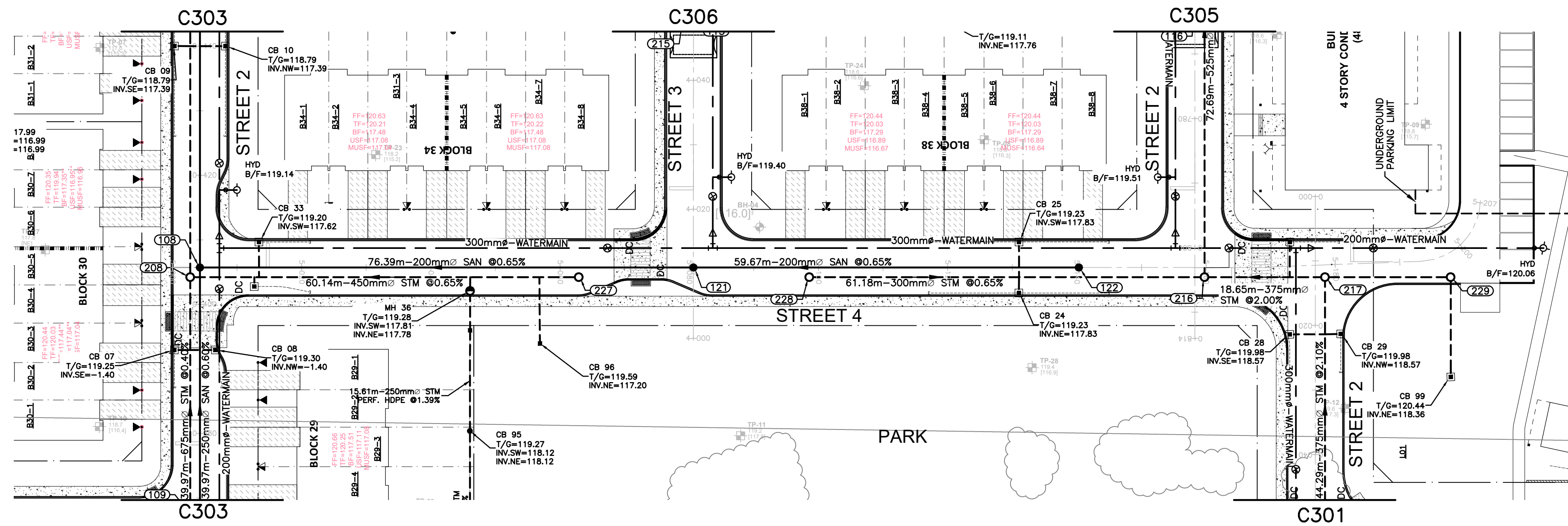
DESIGNED BY
 REVIEWED BY
 OWNER

LATITUDE HOMES
 1202 CARP ROAD
 STITTSVILLE, ON. K2S 1B9

exp Services Inc.
 1-877-668-1899 | +1-613-225-7330
 305 Woodbine Drive, Unit 100
 Ottawa, ON K2B 8H6
 Canada
 www.exp.com

• BUILDINGS • EARTH & ENVIRONMENT • ENERGY •
 • INDUSTRIAL • INFRASTRUCTURE • SUSTAINABILITY •

DESIGN	PROJECT	PROJECT NO.
SK	HAZELDEAN HORIZONS	258780
JLF	6171 HAZELDEAN ROAD	SURVEY: 238800-PMW
BMT	OTTAWA, ONTARIO.	DATE: 24/07/20
SK	PLAN AND PROFILE, STREET 3	DRAWING NO.
JLF	STA.4+000 TO STA.4+150	C306
BMT		



CAUTION
THE POSITION OF ALL POLE LINES, CONDUITS, WATERMANS, SEWERS AND OTHER UNDERGROUND UTILITIES AND STRUCTURES IS NOT NECESSARILY SHOWN ON THE CONTRACT DRAWINGS, AND WHERE SHOWN, THE ACCURACY OF THE POSITION OF SUCH UTILITIES AND STRUCTURES IS NOT GUARANTEED. BEFORE STARTING WORK, DETERMINE THE EXACT LOCATION OF ALL SUCH UTILITIES AND STRUCTURES AND ASSUME ALL LIABILITY FOR DAMAGE TO THEM.

JOB BENCH MARK JBM
TOP OF HEAD OF MAGNETIC NAIL SET IN SIDE OF CONCRETE SIGN
BASE 0.2± ABOVE GRADE ELEVATION=120.77
NORTHING=5014575.29 EASTING=349007.23

TOPOGRAPHIC INFORMATION
PART OF LOT 12, CONCESSION 12, GEOGRAPHIC TOWNSHIP OF GOULBOURN, CITY OF OTTAWA.
TOPOGRAPHIC INFORMATION PROVIDED BY FAIRHALL MOFFATT & WOODLAND LIMITED O.L.S (TP3882) SURVEY DATED JANUARY 14, 2020.
SITE GRID SYSTEM NTD NAD 83, ZONE 9.

REV	REVISION DESCRIPTION	DATE	BY	APPD
3	REVISED AS PER CITY COMMENTS	14/10/22	AC	BMT
2	ISSUED FOR APPROVAL	12/05/22	SK	BMT
1	SUBMISSION NO.2	27/04/21	SK	BMT

SCALE	DESIGNED BY	REVIEWED BY	OWNER
HORIZONTAL 1:500 VERTICAL 1:50			LATITUDE HOMES 1202 CARP ROAD STITTSVILLE, ON. K2S 1B9

exp Services Inc.
1-877-668-1899 | 1-613-225-7330
200 Wellington Street, Unit 100
Ottawa, ON K2B 8R6
Canada
www.exp.com

• BUILDINGS • EARTH & ENVIRONMENT • ENERGY •
• INDUSTRIAL • INFRASTRUCTURE • SUSTAINABILITY •

PROJECT	PROJECT NO.
HAZELDEAN HORIZONS 6171 HAZELDEAN ROAD OTTAWA, ONTARIO.	258780
DESIGN	SURVEY
JLF	238800-FMW
CHECKED	DATE
BMT	24/07/20
CAD	TITLE
SK	PLAN AND PROFILE, STREET 4 STA.5+000 TO STA.5+200
PROJECT MANAGER	DRAWING NO.
JLF	C307
APPROVED	
BMT	

