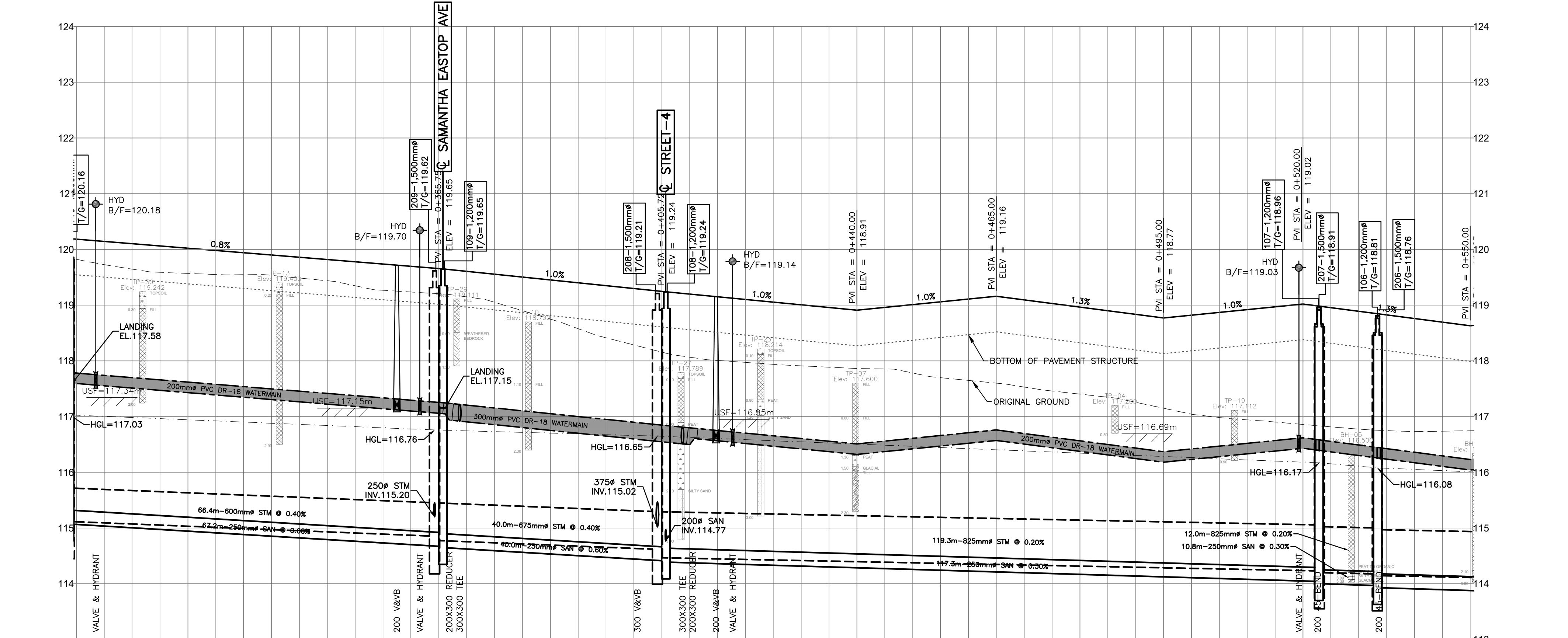


LEGEND

- PROPERTY LINE
- 115 SANITARY MH NUMBER
- 215 PROPOSED SANITARY MH/SEWER
- STORM MH NUMBER
- PROPOSED STORM MH/SEWER
- PROPOSED WATERMAIN
- OUTSIDE PROPOSED DEVELOPMENT



CHAINAGE	TOP OF WATERMAIN ELEVATION	STORM SEWER INVERTS	SANITARY SEWER INVERTS	CHAINAGE	TOP OF WATERMAIN ELEVATION	STORM SEWER INVERTS	SANITARY SEWER INVERTS	CHAINAGE
0+303.5	117.75			0+303.5	117.75			0+303.5
0+320	120.10			0+320	120.10			0+320
0+340	117.62	66.4m-600mm ^Ø CONCRETE 100-D STM @ 0.40%	67.2m-250 PVC DR-35 SAN @ 0.60%	0+340	117.62			0+340
0+357.5	117.32			0+357.5	117.32			0+357.5
0+360	117.28			0+360	117.28			0+360
0+361.6	117.24			0+361.6	117.24			0+361.6
0+362.2	117.22			0+362.2	117.22			0+362.2
0+368.8	117.10	40.0m-675mm ^Ø CONCRETE 100-D STM @ 0.40%	40.0m-250 PVC DR-35 SAN @ 0.60%	0+368.8	117.10			0+368.8
0+380	117.10			0+380	117.10			0+380
0+400	116.89			0+400	116.89			0+400
0+405.7	116.79			0+405.7	116.79			0+405.7
0+410.5	116.75			0+410.5	116.75			0+410.5
0+414.7	116.72			0+414.7	116.72			0+414.7
0+417.7	116.70			0+417.7	116.70			0+417.7
0+420	116.65			0+420	116.65			0+420
0+440	116.51			0+440	116.51			0+440
0+460	116.71			0+460	116.71			0+460
0+480	116.56	119.3m-825mm ^Ø CONCRETE 100-D STM @ 0.20%	117.3m-250 PVC DR-35 SAN @ 0.30%	0+480	116.56			0+480
0+500	116.42			0+500	116.42			0+500
0+519.3	116.62			0+519.3	116.62			0+519.3
0+520	116.59			0+520	116.59			0+520
0+522.6	116.59			0+522.6	116.59			0+522.6
0+533.6	116.44			0+533.6	116.44			0+533.6
0+540	116.36			0+540	116.36			0+540
116.63	116.63			116.63	116.63			116.63

CAUTION: THE POSITION OF ALL POLE LINES, CONDUITS, WATERMANS, SEWERS AND OTHER UNDERGROUND UTILITIES AND STRUCTURES IS NOT NECESSARILY SHOWN ON THE CONTRACT DRAWINGS, AND WHERE SHOWN, THE ACCURACY OF THE POSITION OF SUCH UTILITIES AND STRUCTURES IS NOT GUARANTEED. BEFORE STARTING WORK, DETERMINE THE EXACT LOCATION OF ALL SUCH UTILITIES AND STRUCTURES AND ASSUME ALL LIABILITY FOR DAMAGE TO THEM.

CAUTION
 THE POSITION OF ALL POLE LINES, CONDUITS, WATERMANS, SEWERS AND OTHER UNDERGROUND UTILITIES AND STRUCTURES IS NOT NECESSARILY SHOWN ON THE CONTRACT DRAWINGS, AND WHERE SHOWN, THE ACCURACY OF THE POSITION OF SUCH UTILITIES AND STRUCTURES IS NOT GUARANTEED. BEFORE STARTING WORK, DETERMINE THE EXACT LOCATION OF ALL SUCH UTILITIES AND STRUCTURES AND ASSUME ALL LIABILITY FOR DAMAGE TO THEM.

JOB BENCH MARK JBM ▲
 TOP OF HEAD OF MAGNETIC NAIL SET IN SIDE OF CONCRETE SIGN
 BASE 0.2± ABOVE GRADE ELEVATION=120.77
 NORTHING=5014575.29 EASTING=349007.23

TOPOGRAPHIC INFORMATION
 PART OF LOT 12, CONCESSION 12, GEOGRAPHIC TOWNSHIP OF GOULBOURN, CITY OF OTTAWA.
 TOPOGRAPHIC INFORMATION PROVIDED BY FAIRHALL MOFFATT & WOODLAND LIMITED O.L.S (TP3862) SURVEY DATED JANUARY 14, 2020.
 SITE GRID SYSTEM NTM NAD 83, ZONE 9.

REV	REVISION DESCRIPTION	DATE	BY	APPD
2	ISSUED FOR APPROVAL	05/12/22	SK	BMT
1	SUBMISSION NO.2	04/27/21	SK	BMT

SCALE
 0 5m 10m 20m
 HORIZONTAL 1:500
 VERTICAL 1:50

DESIGNED BY: []
 REVIEWED BY: []

OWNER: LATITUDE HOMES
 1202 CARP ROAD
 STITTVILLE, ON. K2S 1B9

exp. exp Services Inc.
 1-877-938-1899 | 416-225-7330
 255 Wellington Street West, Unit 100
 Ottawa, ON K2B 8R6
 Canada
 www.exp.com

DESIGN	PROJECT
SK	HAZELDEAN HORIZONS
JLF	6171 HAZELDEAN ROAD
BMT	OTTAWA, ONTARIO.
SK	PLAN AND PROFILE, STREET 2
JLF	STA.0+300 TO STA.0+550
BMT	

PROJECT No. 258780
 SURVEY 238800-FMW
 DATE 24/07/20
 DRAWING No. C303