

PROPOSED ELEVATIONS	118.00	118.14	117.94	117.69	117.44	117.19	116.94	116.68	116.44	116.19	116.00	115.07	115.37	115.63	115.86	115.82	114.00
EXISTING ELEVATIONS	116.79	116.79	116.67	116.57	116.44	116.19	116.00	115.82	115.63	115.44	115.25	115.07	114.88	114.69	114.50	114.31	114.12
TOP OF WATERMAIN ELEVATION	118.00	118.14	117.94	117.69	117.44	117.19	116.94	116.68	116.44	116.19	116.00	115.07	115.37	115.63	115.86	115.82	114.00
STORM SEWER INVERTS	113.84	113.84	113.84	113.84	113.84	113.84	113.84	113.84	113.84	113.84	113.84	113.84	113.84	113.84	113.84	113.84	113.84
SANITARY SEWER INVERTS	113.45	113.45	113.45	113.45	113.45	113.45	113.45	113.45	113.45	113.45	113.45	113.45	113.45	113.45	113.45	113.45	113.45
CHAINAGE	0+000	0+020	0+033.4	0+040	0+054.6	0+060	0+080	0+100	0+120	0+125							

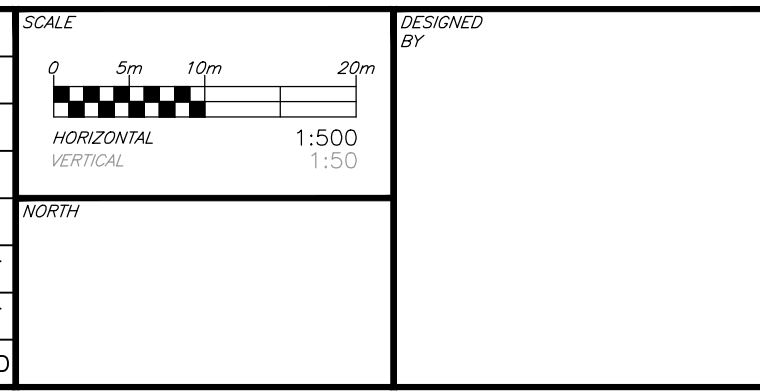
I:\Projects\2021\2021-03-05.dwg: ...ref=GP.dwg; ...ref=PPES.dwg; ...ref=ITL.dwg; ...ref=MM\_Top.dwg; ...ref=GRNDING.dwg; ...ref=PROFILES-GEOTECH\_BLOCK.dwg; ...ref=Top Plan 2021-03-05.dwg

**CAUTION**  
 THE POSITION OF ALL POLE LINES, CONDUITS, WATERMANS, SEWERS AND OTHER UNDERGROUND AND OVERGROUND UTILITIES AND STRUCTURES IS NOT NECESSARILY SHOWN ON THE CONTRACT DRAWINGS, AND WHERE SHOWN, THE ACCURACY OF THE POSITION OF SUCH UTILITIES AND STRUCTURES IS NOT GUARANTEED. BEFORE STARTING WORK, DETERMINE THE EXACT LOCATION OF ALL SUCH UTILITIES AND STRUCTURES AND ASSUME ALL LIABILITY FOR DAMAGE TO THEM.

**JOB BENCH MARK** JBM ▲  
 TOP OF HEAD OF MAGNETIC NAIL SET IN SIDE OF CONCRETE SIGN  
 BASE 0.2± ABOVE GRADE ELEVATION=120.77  
 NORTHING=5014575.29 EASTING=349007.23

**TOPOGRAPHIC INFORMATION**  
 PART OF LOT 12, CONCESSION 12, GEOGRAPHIC TOWNSHIP OF GOULBOURN, CITY OF OTTAWA.  
 TOPOGRAPHIC INFORMATION PROVIDED BY FAIRHALL MOFFATT & WOODLAND LIMITED O.L.S (TP3862) SURVEY DATED JANUARY 14, 2020.  
 SITE GRID SYSTEM NTM NAD 83, ZONE 9.

REV	REVISION DESCRIPTION	DATE	BY	APPD
2	ISSUED FOR APPROVAL	05/12/22	SK	BMT
1	SUBMISSION NO.2	04/27/21	SK	BMT



DESIGNED BY: [Blank]  
 REVIEWED BY: [Blank]

**LATITUDE HOMES**  
 1202 CARP ROAD  
 STITTSVILLE, ON. K2S 1B9

**exp.**  
 exp Services Inc.  
 1-1-813-688-1899 | 1-613-225-7330  
 3000 Queenensway Drive, Unit 100  
 Ottawa, ON K2B 8H6  
 Canada  
 www.exp.com

• BUILDINGS • EARTH & ENVIRONMENT • ENERGY •  
 • INDUSTRIAL • INFRASTRUCTURE • SUSTAINABILITY •

BASEPLAN	SK	PROJECT	HAZELDEAN HORIZONS 6171 HAZELDEAN ROAD OTTAWA, ONTARIO.	PROJECT No. 258780
DESIGN	JLF	SURVEY		238800-FMW
CHECKED	BMT	DATE	24/07/20	
CAD	SK	TITLE	PLAN AND PROFILE, SANITARY CONN. TO EXIST. STA.0+000 TO STA.0+125	DRAWING No. C309
PROJECT MANAGER	JLF			
APPROVED	BMT			