

LEGEND

EXISTING GROUND ELEVATION	X 100.00
ROAD HIGH/LOW POINT ELEVATION	(100.00)
GROUND ELEVATION	X 100.00
GROUND ELEVATION BY OTHERS	X [100.00]
SWALE ELEVATION	X (100.00)
TOP OF GRATE ELEVATION	T/G=100.00
TOP OF WALL ELEVATION	X 100.00 T/W
BOTTOM OF WALL ELEVATION	X 100.00 B/W
FINISHED FLOOR ELEVATION	FF=100.00
TOP OF FOUNDATION ELEVATION	TF=100.00
BASEMENT FLOOR ELEVATION	BF=100.00
PARKING LEVEL ELEVATION	P1=100.00
UNDERSIDE OF FOOTING ELEVATION	UF=100.00
ORIGINAL GROUND ELEVATION	OG=100.00
TOP OF ROCK ELEVATION	T/ROCK=100.00
EXISTING CONTOURS	100.00
SLOPE AND DIRECTION OF FLOW	2.0%
MAJOR OVERLAND FLOW ROUTE	[Arrow]
OUTSIDE PROPOSED DEVELOPMENT	[Shaded Area]
FIRE RATED WALL (2HR)	[Dashed Line]

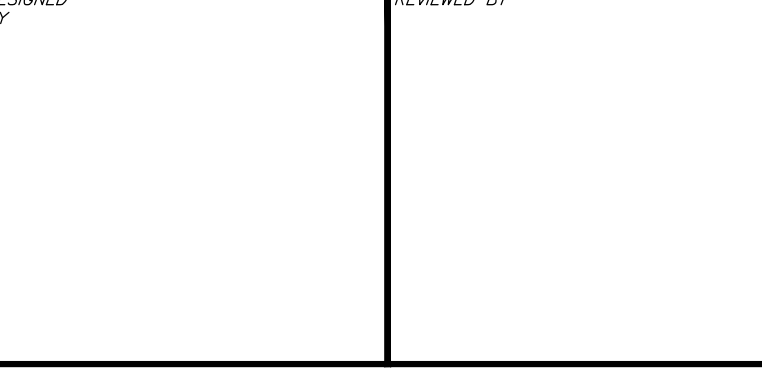
NOTE:
 FOR SINGLES, SEMIS AND TOWNHOMES FF TO BF = 3.15m,
 UNLESS OTHERWISE NOTED;
 * FF TO BF = 2.85m (BLOCKS 32, 44)
 ** FF TO BF = 3.00m (BLOCKS 30, 31, 33, 35, 40, 42, 43)
 *** REFER TO STRUCTURAL DRAWING FOR THE USE

CAUTION
 THE POSITION OF ALL POLE LINES, CONDUITS, WATERMANS, SEWERS AND OTHER UNDERGROUND AND OVERGROUND UTILITIES AND STRUCTURES IS NOT NECESSARILY SHOWN ON THE CONTRACT DRAWINGS, AND WHERE SHOWN, THE ACCURACY OF THE POSITION OF SUCH UTILITIES AND STRUCTURES IS NOT GUARANTEED. BEFORE STARTING WORK, DETERMINE THE EXACT LOCATION OF ALL SUCH UTILITIES AND STRUCTURES AND ASSUME ALL LIABILITY FOR DAMAGE TO THEM.

JOB BENCH MARK JBM ▲
 TOP OF HEAD OF MAGNETIC NAIL SET IN SIDE OF CONCRETE SIGN
 BASE 0.2± ABOVE GRADE ELEVATION=120.77
 NORTHING=5014575.29 EASTING=349007.23

TOPOGRAPHIC INFORMATION
 PART OF LOT 12, CONCESSION 12, GEOGRAPHIC TOWNSHIP OF GOULBOURN, CITY OF OTTAWA.
 TOPOGRAPHIC INFORMATION PROVIDED BY FAIRHALL MOFFATT & WOODLAND LIMITED O.L.S (TP3882) SURVEY DATED JANUARY 14, 2020.
 SITE GRID SYSTEM NTM NAD 83, ZONE 9.

REV	REVISION DESCRIPTION	DATE	BY	APPD
4	ISSUED FOR APPROVAL	05/12/22	SK	BMT
3	REVISED PER CITY COMMENTS	09/24/21	SK	BMT
2	SUBMISSION NO.2	04/27/21	SK	BMT
1	SUBMISSION NO.1	04/08/20	SK	BMT



LATITUDE HOMES
 1202 CARP ROAD
 STITTSVILLE, ON. K2S 1B9

exp.
 exp Services Inc.
 1-813-688-1899 | 1-613-225-7330
 1000 Highway 10, Unit 100
 Ottawa, ON K2B 8H6
 Canada
 www.exp.com

DESIGN	JLF	PROJECT	HAZELDEAN HORIZONS 6171 HAZELDEAN ROAD OTTAWA, ONTARIO.
CHECKED	BMT	DATE	24/07/20
CAD	SK	TITLE	GRADING PLAN 2
PROJECT MANAGER	JLF	DRAWING NO.	C201
APPROVED	BMT	PROJECT NO.	258780
		SURVEY	238800-FMW