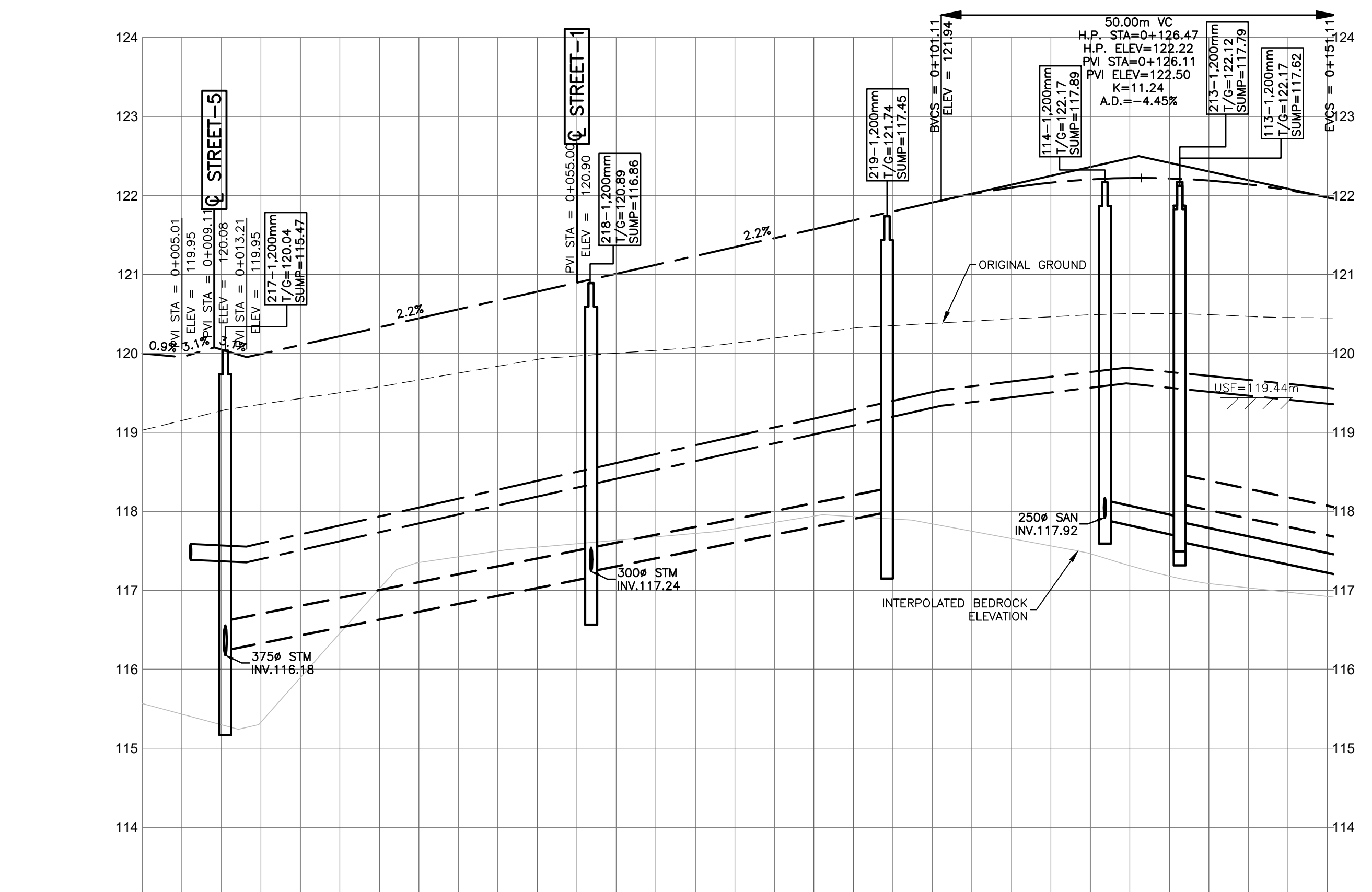
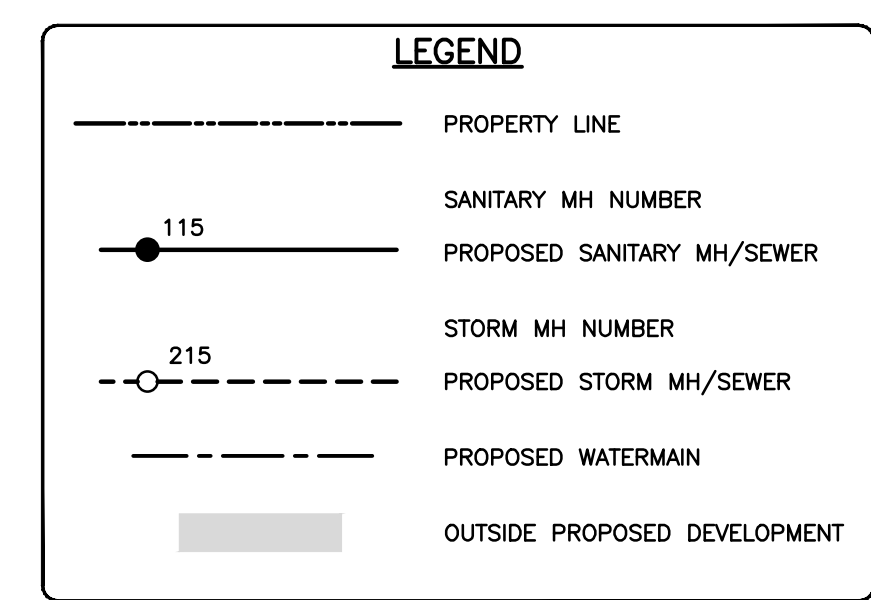
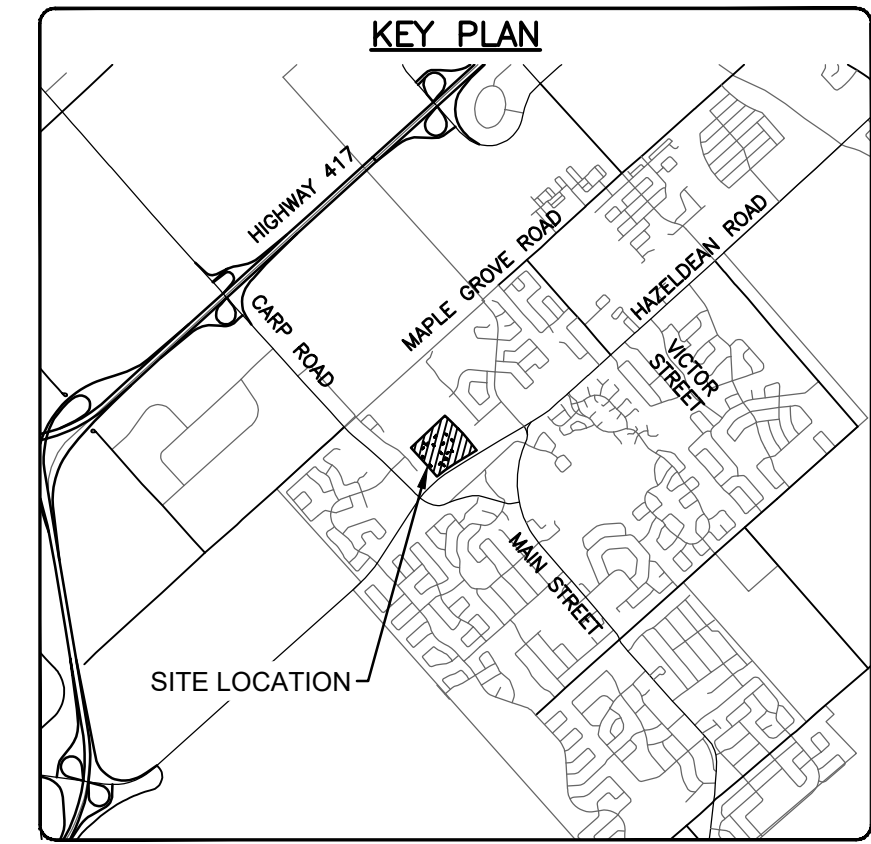
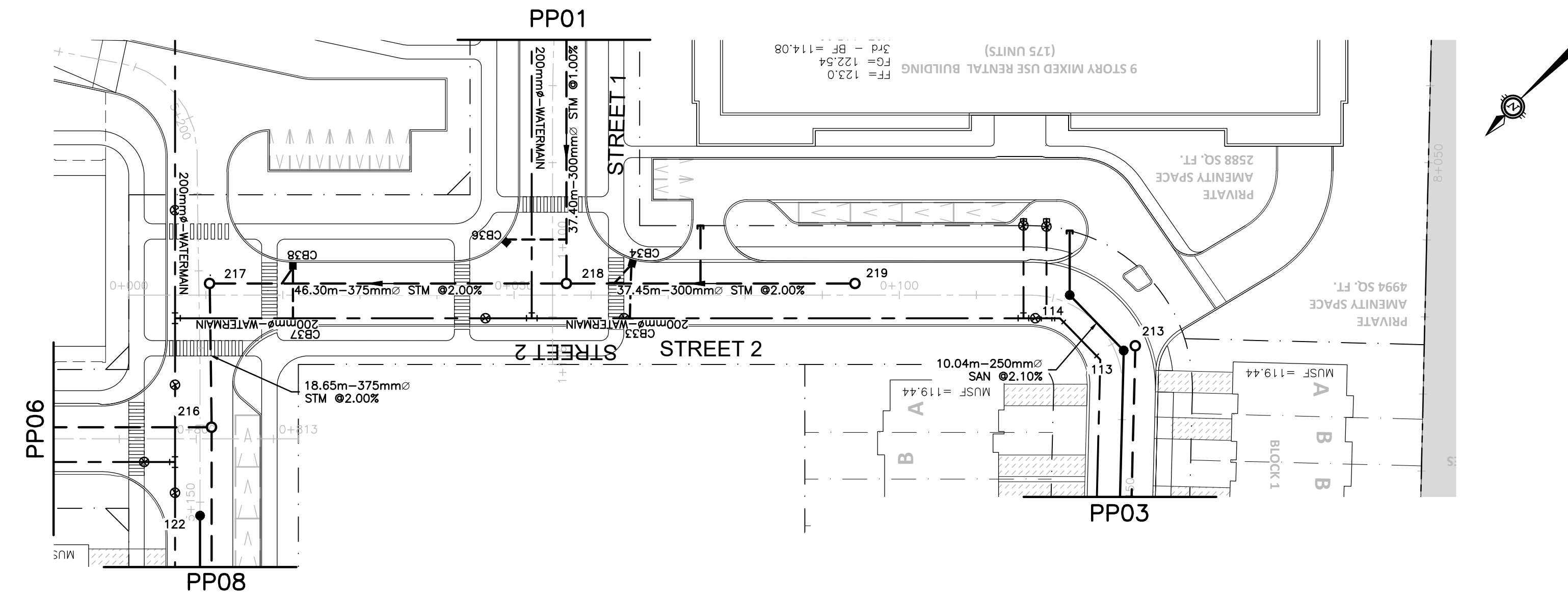


File: \\exp-sv\proj\2021\1165128\1165128-002\1165128-002.dwg
 User: Smeeta.Singh
 Date: 2021-07-27 11:36:11
 Plotter: HP DesignJet 5000 Series
 Plot Style: exp.ctb
 Plot Date: 2021-07-27 11:36:11
 Plot Time: 00:00:00
 Plot Path: \\exp-sv\proj\2021\1165128\1165128-002\1165128-002.dwg

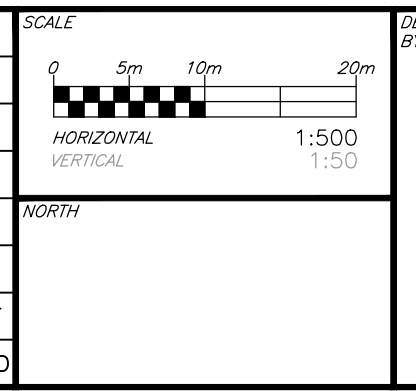
CAUTION
 THE POSITION OF ALL POLE LINES, CONDUITS, WATERMANS, SEWERS AND OTHER UNDERGROUND AND OVERGROUND UTILITIES AND STRUCTURES IS NOT NECESSARILY SHOWN ON THE CONTRACT DRAWINGS, AND WHERE SHOWN, THE ACCURACY OF THE POSITION OF SUCH UTILITIES AND STRUCTURES IS NOT GUARANTEED. BEFORE STARTING WORK, DETERMINE THE EXACT LOCATION OF ALL SUCH UTILITIES AND STRUCTURES AND ASSUME ALL LIABILITY FOR DAMAGE TO THEM.

**PRELIMINARY
 NOT FOR CONSTRUCTION**



STATION	ELEVATIONS PROPOSED EXISTING	TOP OF WATERMAIN ELEVATION	STORM SEWER INVERTS	SANITARY SEWER INVERTS	CHAINAGE
0+000	117.00	116.95			0+000
0+020	117.00	117.71	116.24		0+020
0+040	117.00	117.71	46.3m-375mm STM @ 2.00%		0+040
0+060	117.00	118.61	117.24	117.24	0+060
0+080	117.00	119.06	37.5m-300mm PVC STM @ 2.00%		0+080
0+100	117.00	119.51	117.09		0+100
0+120	117.00	119.77	10.0m-250 PVC SAN @ 2.10%		0+120
0+140	117.00	119.66	118.09	117.88	0+140
0+140	121.98	121.98			0+140

REV	REVISION DESCRIPTION	DATE	BY	APPD
1	SUBMISSION NO.2	04/27/21	SK	BMT



DESIGNED BY: [Blank]
 REVIEWED BY: [Blank]

CLIENT: 11654128 CANADA INC.
 768 BOULEVARD ST. JOSEPH
 GATINEAU, QC

exp.
 exp Services Inc.
 1-813-688-1899 | 1-613-225-7330
 3000 Steeles Ave. E., Unit 100
 Downsview, ON M3B 8H6
 Canada
 www.exp.com
 • BUILDINGS • EARTH & ENVIRONMENT • ENERGY •
 • INDUSTRIAL • INFRASTRUCTURE • SUSTAINABILITY •

BASEPLAN	SK
DESIGN	JLF
CHECKED	BMT
CAD	SK
PROJECT MANAGER	JLF
APPROVED	BMT

PROJECT: 6171 HAZELDEAN ROAD
 OTTAWA, ONTARIO.
 TITLE: PLAN AND PROFILE
 STREET-2

PROJECT No. 258780
 SURVEY: 238800-FMW
 DATE: 24/07/20
 DRAWING No. PP02