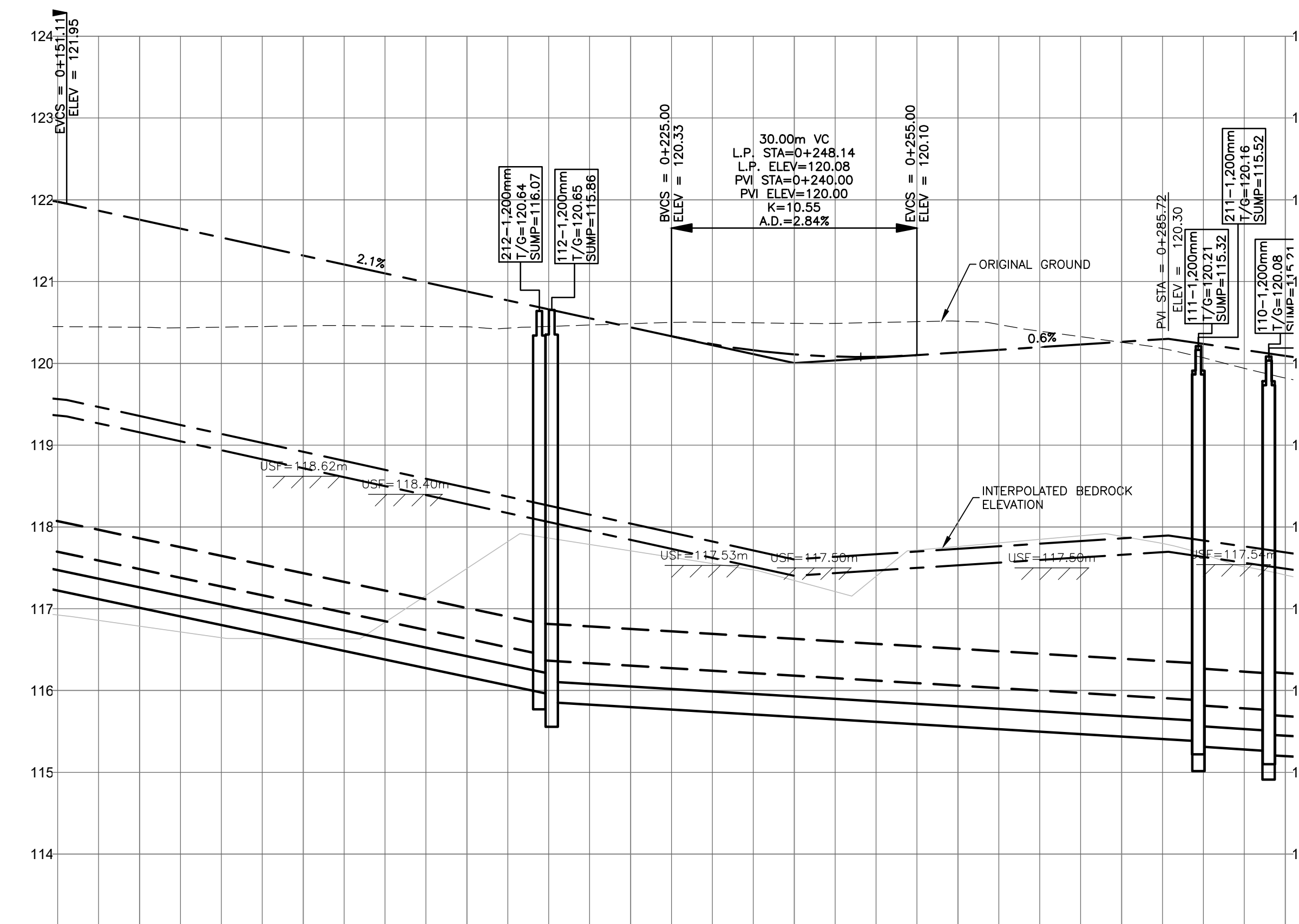
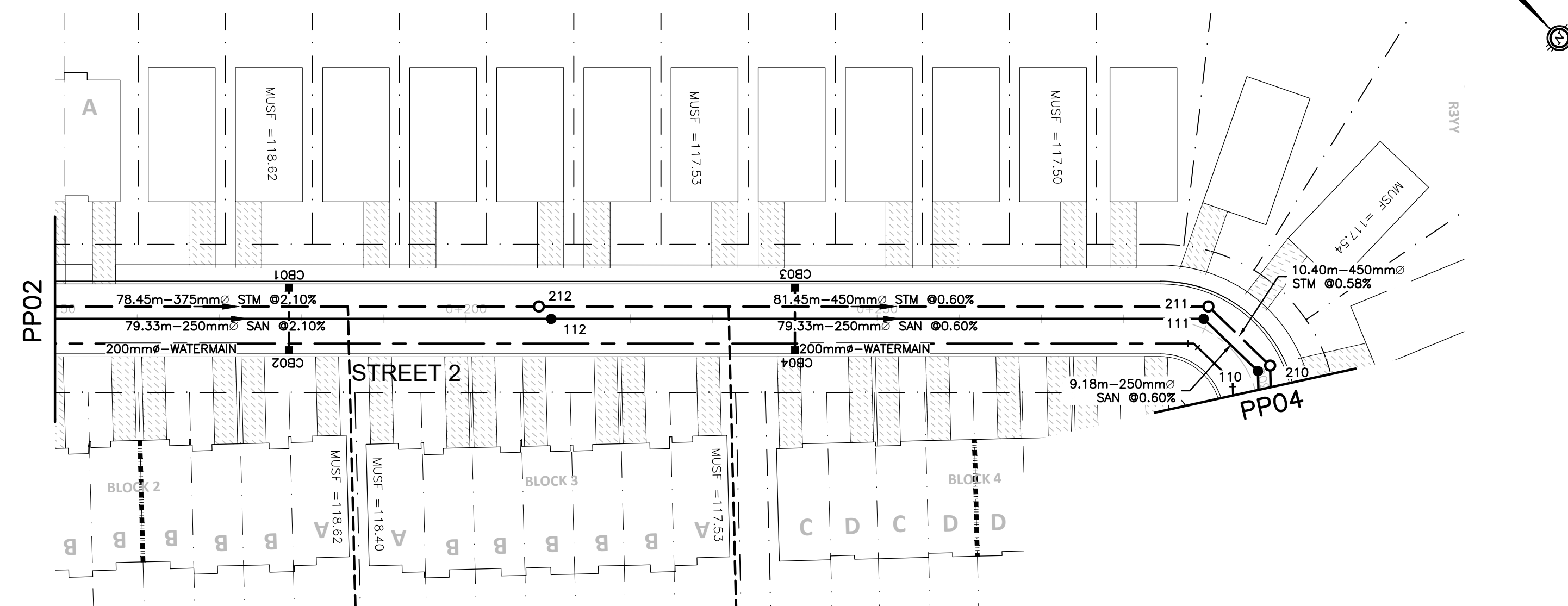




LEGEND

- PROPERTY LINE
- SANITARY MH NUMBER
- PROPOSED SANITARY MH/SEWER
- STORM MH NUMBER
- PROPOSED STORM MH/SEWER
- PROPOSED WATERMAIN
- OUTSIDE PROPOSED DEVELOPMENT



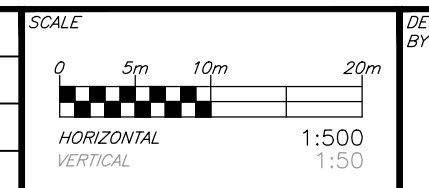
STATION	TOP OF WATERMAIN ELEVATION	STORM SEWER INVERTS	SANITARY SEWER INVERTS	CHAINAGE
0+159.98	121.98	118.45	115.26	
0+160.00	121.87	118.45	115.26	0+160
0+165.00	121.76	118.45	115.26	
0+170.00	121.65	118.45	115.26	
0+180.00	121.54	118.45	115.26	0+180
0+190.00	121.43	118.45	115.26	
0+200.00	121.32	118.45	115.26	0+200
0+210.00	121.21	118.45	115.26	
0+220.00	121.10	118.45	115.26	0+220
0+230.00	120.99	118.45	115.26	
0+240.00	120.88	118.45	115.26	0+240
0+250.00	120.77	118.45	115.26	
0+260.00	120.66	118.45	115.26	0+260
0+270.00	120.55	118.45	115.26	
0+280.00	120.44	118.45	115.26	0+280
0+290.00	120.33	118.45	115.26	
0+300.00	120.23	118.45	115.26	0+300

CAUTION
 THE POSITION OF ALL POLE LINES, CONDUITS, WATERMANS, SEWERS AND OTHER UNDERGROUND AND OVERGROUND UTILITIES AND STRUCTURES IS NOT NECESSARILY SHOWN ON THE CONTRACT DRAWINGS, AND WHERE SHOWN, THE ACCURACY OF THE POSITION OF SUCH UTILITIES AND STRUCTURES IS NOT GUARANTEED. BEFORE STARTING WORK, DETERMINE THE EXACT LOCATION OF ALL SUCH UTILITIES AND STRUCTURES AND ASSUME ALL LIABILITY FOR DAMAGE TO THEM.

PRELIMINARY

NOT FOR CONSTRUCTION

REV	REVISION DESCRIPTION	DATE	BY	APPD
1	SUBMISSION NO.2	04/27/21	SK	BMT



DESIGNED BY: [Signature]

REVIEWED BY: [Signature]

CLIENT: 11654128 CANADA INC.
 768 BOULEVARD ST. JOSEPH
 GATINEAU, QC

exp. Services Inc.
 1-813-688-1899 | 1-613-225-7330
 200 Colquhoun Drive, Unit 100
 Ottawa, ON K2B 8R6
 Canada
 www.exp.com

• BUILDINGS • EARTH & ENVIRONMENT • ENERGY •
 • INDUSTRIAL • INFRASTRUCTURE • SUSTAINABILITY •

BASE PLAN	PROJECT
SK	6171 HAZELDEAN ROAD
JLF	OTTAWA, ONTARIO.
BMT	
SK	
JLF	
BMT	

PROJECT No. 258780
 SURVEY 238800-FMW
 DATE 24/07/20

PLAN AND PROFILE
 STREET-2

DRAWING No. PP03