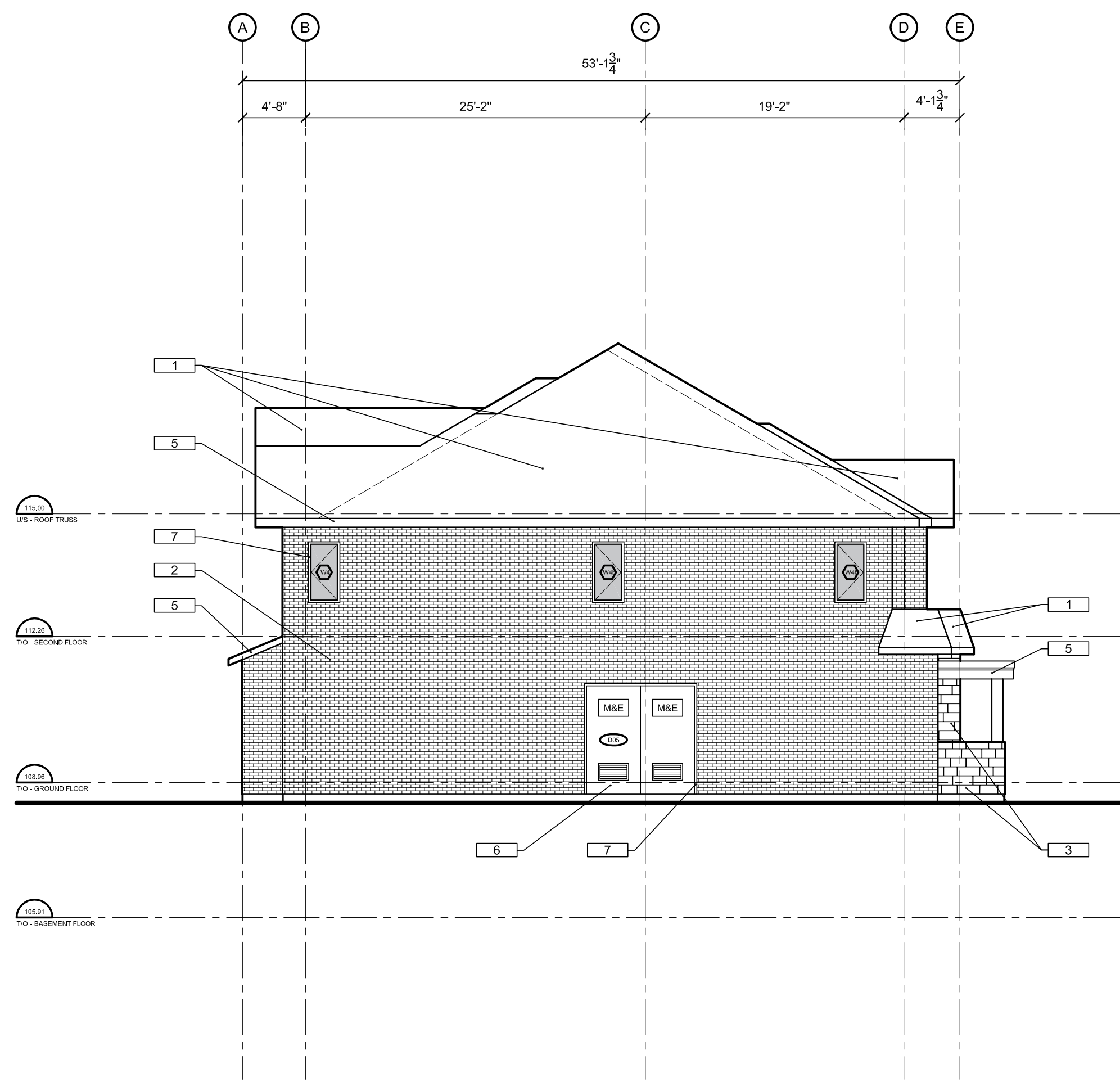
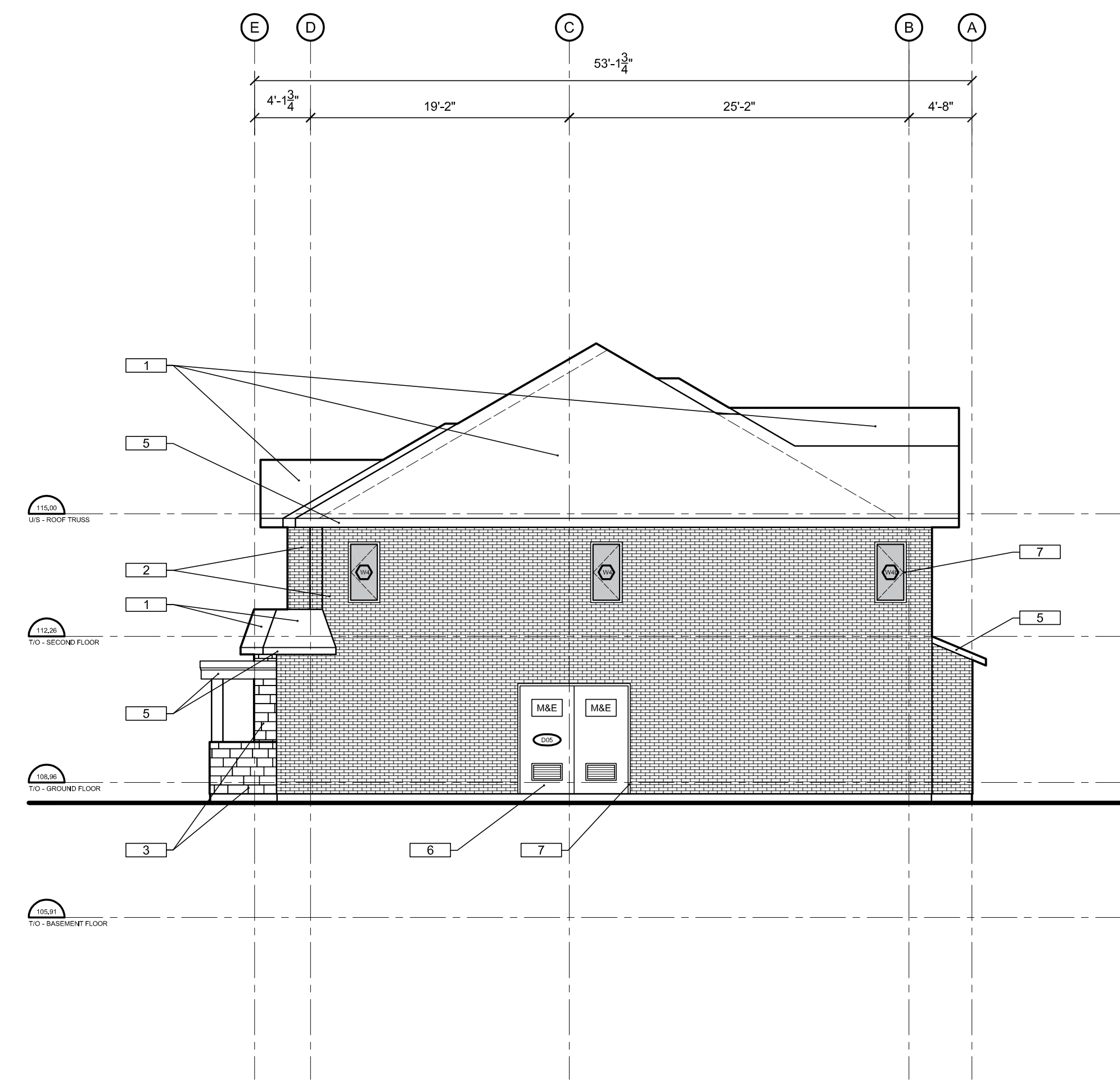


IT IS THE RESPONSIBILITY OF THE APPROPRIATE CONTRACTOR TO CHECK AND VERIFY ALL DIMENSIONS ON SITE AND TO REPORT ALL ERRORS AND/OR OMISSIONS TO THE ARCHITECT.
 ALL CONTRACTORS MUST COMPLY WITH ALL PERTINENT CODES AND BY-LAWS.
 THIS DRAWING MAY NOT BE USED FOR CONSTRUCTION UNTIL SIGNED BY THE ARCHITECT.
 DO NOT SCALE DRAWINGS.
 COPYRIGHT RESERVED.



01 Left Elevation
 A201 Block 3 (Typical 8 Unit) SCALE: 1/8" = 1'



02 Right Elevation
 A201 Block 3 (Typical 8 Unit) SCALE: 1/8" = 1'

- MATERIALS LEGEND**
- 1 - SHINGLES - IKO 25 YEAR DRIFTWOOD
 - 2 - BRICK - ENDICOTT CLAY PRODUCTS GREY BLEND VELOUR MODULAR
 - 3 - STONE - BRAMPTON BRICK POLAR WHITE SMOOTH
 - 4 - CONTENTIOUS PANEL - HARDIEBOARD GREY C/W TRIM
 - 5 - FACIA - CHARCOAL GREY
 - 6 - DOOR - FACTORY FINISHED CHARCOAL GREY
 - 7 - DOOR AND WINDOW FRAMES - FACTORY FINISHED BLACK
 - 8 - CAST-IN-PLACE CONCRETE ENTRANCE STAIRS

No.	DESCRIPTION	DATE
3	ISSUED FOR SITE PLAN RESPONSE	09-10-2020
2	ISSUED FOR COORDINATION	02-10-2020
1	ISSUED FOR COORDINATION	22-09-2020

REVISIONS:

ARCHITECT SEAL: 	NORTH ARROW:
---------------------	------------------

ARCHITECT:
rla / architecture
 roderick lahey architect inc.
 56 beech street, ottawa, ontario K1S 3J6
 t. 613.724.9932 f. 613.724.1209 rlaarchitecture.ca

PROJECT TITLE:
 1869 MAPLE GROVE ROAD
 OTTAWA ONTARIO

SHEET TITLE:
 TYPICAL 8 UNIT BLOCK
 SIDE ELEVATIONS

DRAWN: L.M.	CHECKED: RLA
SCALE: 1/8"=1'	SHEET No. A201
PROJECT No. 1921	