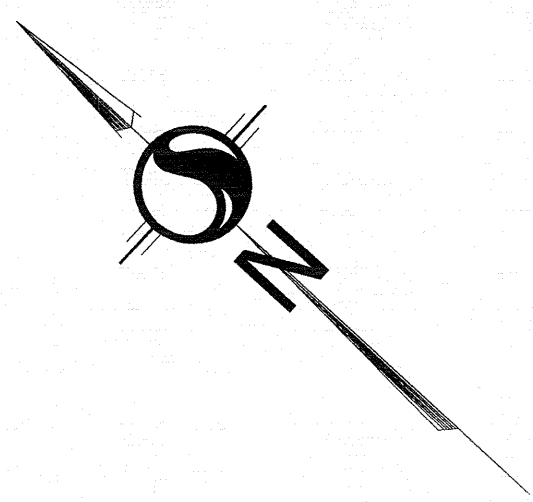


15101985-111 Drawn: JWB Date: 10/10/17 11:11 AM



ASSOCIATION OF ONTARIO
LAND SURVEYORS
PLAN SUBMISSION FORM
2011903



Stantec Geomatics Ltd.
400 - 1331 Clyde Avenue
Ottawa ON
Tel. 613.722.4420
www.stantec.com

© Copyright 2017 Stantec Geomatics Ltd. The reproduction, alteration or use of this REPORT in whole or in part without the express permission of Stantec Geomatics Ltd. is STRICTLY PROHIBITED.

TOPOGRAPHIC PLAN OF SURVEY PART OF LOTS 11 & 12 CONCESSION 4 (GEOGRAPHIC TOWNSHIP OF MARCH) CITY OF OTTAWA

Scale 1:500
0 10 20 30 METRES

METRIC CONVERSION
DISTANCES AND COORDINATES SHOWN ON THIS PLAN ARE IN METRES AND CAN BE CONVERTED TO FEET BY DIVIDING BY 0.3048

GRID SCALE CONVERSION
DISTANCES ARE GROUND AND CAN BE CONVERTED TO GRID BY MULTIPLYING BY THE COMBINED SCALE FACTOR OF 0.99994.

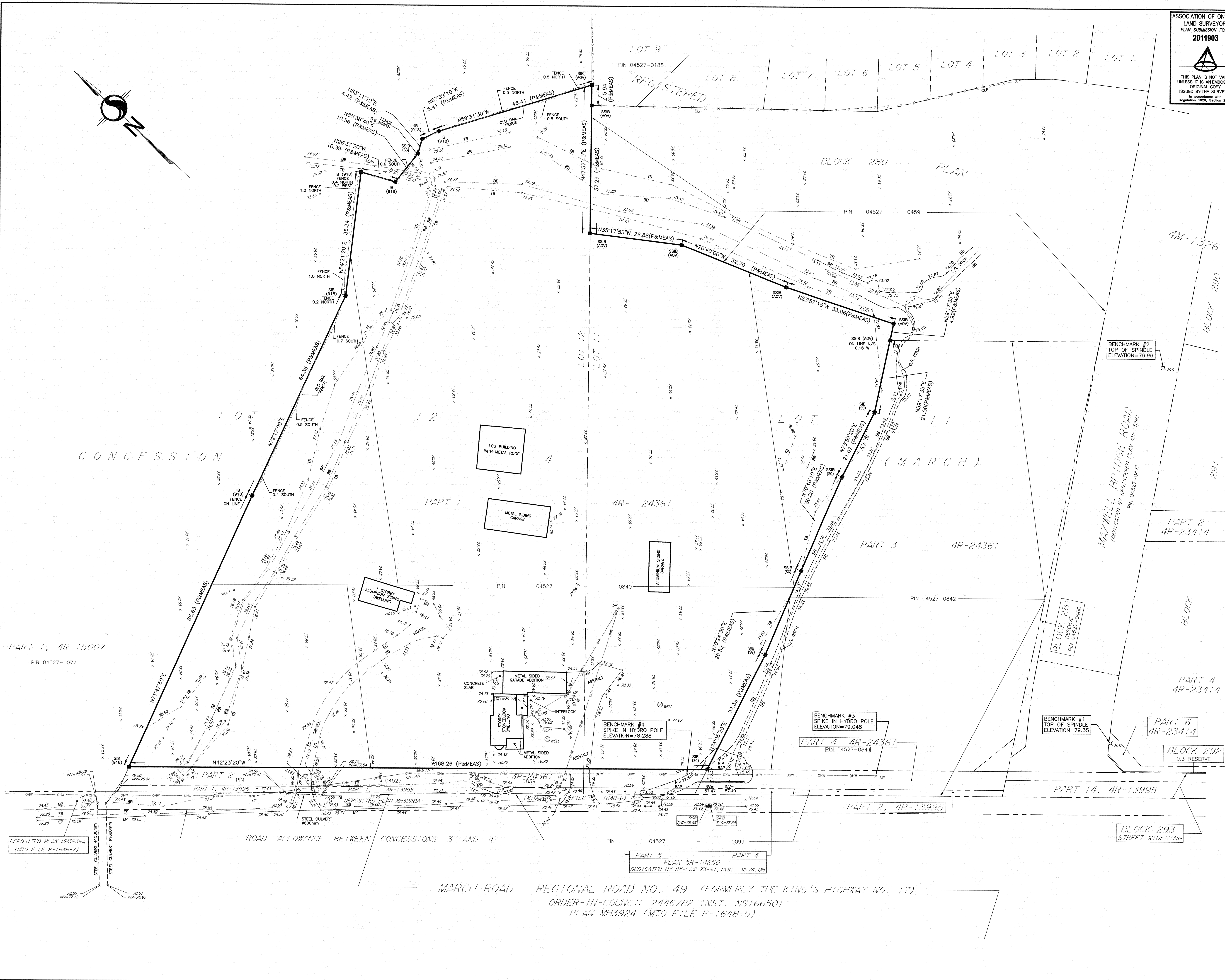
BEARING NOTE
BEARINGS ARE GRID, DERIVED FROM CAN-NET VES NETWORK GPS OBSERVATIONS ON NCC HORIZONTAL CONTROL MONUMENTS 19773035 AND 19680191, CENTRAL MERIDIAN, 76° 30' WEST LONGITUDE MTM ZONE 9, NAD83 (ORIGINAL).

19773035 N:500660.42 E:324888.04
19680191 N:5033564.26 E:388064.94

ELEVATION NOTE
ELEVATIONS ARE GEODETIC BASED ON A SURVEY BY AOV DATED JULY 10, 2015. POSITION OF SITE BENCHMARKS #1 AND #2 AS SHOWN HEREON.

LEGEND

SYMBOL	DENOTES	FOUND MONUMENTS
■	SET MONUMENTS	SET MONUMENTS
□	IRON BAR	IRON BAR
IB	ROUND IRON BAR	ROUND IRON BAR
SIB	STANDARD IRON BAR	STANDARD IRON BAR
CS	SHORT STANDARD IRON BAR	SHORT STANDARD IRON BAR
CP	CUT CROSS	CUT CROSS
CP	CONCRETE PIN	CONCRETE PIN
WIT	WITNESS	WITNESS
PIN	PROPERTY IDENTIFICATION NUMBER	PROPERTY IDENTIFICATION NUMBER
MEAS	MEASURED	MEASURED
PROP	PROPORTIONED	PROPORTIONED
OU	ORIGIN UNKNOWN	ORIGIN UNKNOWN
SG	STANTEC GEOMATICS LTD.	STANTEC GEOMATICS LTD.
ORP	OBSERVED REFERENCE POINT	OBSERVED REFERENCE POINT
P	PLAN AR-24361	PLAN AR-24361
ES	EDGE OF SHOULDER	EDGE OF SHOULDER
EP	EDGE OF ASPHALT	EDGE OF ASPHALT
DI	DITCH	DITCH
TB	TOP OF BANK	TOP OF BANK
BB	BOTTOM OF BANK	BOTTOM OF BANK
EG	EDGE OF GRAVEL	EDGE OF GRAVEL
T/G	TOP OF GRATE	TOP OF GRATE
▲	ANCHOR	ANCHOR
◆	SIDE INLET CB	SIDE INLET CB
⊕	FIRE HYDRANT	FIRE HYDRANT
○	UTILITY POLE	UTILITY POLE
○	LIGHT STANDARD	LIGHT STANDARD
⊕	WELL	WELL



MARCH ROAD REGIONAL ROAD NO. 49 (FORMERLY THE KING'S HIGHWAY NO. 17)
ORDER-IN-COUNCIL 2446/82 INST. NS166501
PLAN M-3924 (MTO FILE P-1648-5)

SURVEYOR'S CERTIFICATE
I CERTIFY THAT:
1. THIS SURVEY AND PLAN ARE CORRECT AND IN ACCORDANCE WITH THE SURVEYS ACT, THE SURVEYORS ACT AND THE REGULATIONS MADE UNDER THEM.
2. THE SURVEY WAS COMPLETED ON THE 27th DAY OF JUNE, 2017.

July 10/17
DATE
BRIAN J. WEBSTER
ONTARIO LAND SURVEYOR