

IT IS THE RESPONSIBILITY OF THE APPROPRIATE CONTRACTOR TO CHECK AND VERIFY ALL DIMENSIONS ON SITE AND TO REPORT ALL ERRORS AND/OR OMISSIONS TO THE ARCHITECT.  
 ALL CONTRACTORS MUST COMPLY WITH ALL PERTINENT CODES AND BY-LAWS.  
 THIS DRAWING MAY NOT BE USED FOR CONSTRUCTION UNTIL SIGNED BY THE ARCHITECT.  
 DO NOT SCALE DRAWINGS.

**NOTATION SYMBOLS:**

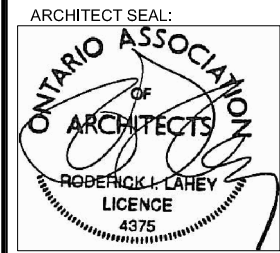
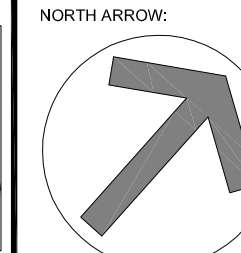
(00)	INDICATES DRAWING NOTES, LISTED ON EACH SHEET
(00)	INDICATES ASSEMBLY TYPE; REFER TO TYPICAL ASSEMBLIES SCHEDULE
(00)	INDICATES WINDOW TYPE; REFER TO WINDOW ELEVATIONS AND DETAILS ON A900 SERIES.
(000)	INDICATES DOOR TYPE; REFER TO DOOR SCHEDULE AND DETAILS ON A900 SERIES.
(00)	DETAIL NUMBER
(00)	TITLE
(00)	SIZE
(00)	DETAIL REFERENCE PAGE
(00)	DETAIL CROSS REFERENCE PAGE

- GENERAL NOTES:**
- (A) REFER TO TYPICAL ASSEMBLIES SHEET FOR WALL, PARTITION, ROOF, CEILING & FLOOR TYPES.
  - (B) FOR DOOR TYPES AND HARDWARE REQUIREMENTS REFER TO DOOR SCHEDULE ON A900 SERIES.
  - (C) ALL INTERIOR DIMENSIONS ARE TAKEN FROM THE FACE OF STUD.
  - (D) ALL EXTERIOR DIMENSIONS ARE TAKEN FROM THE FACE OF STUD.
  - (E) ALL EXTERIOR WALLS ARE TO BE TYPE 'W1' UNLESS NOTED OTHERWISE.
  - (F) ALL INTERIOR PARTITIONS ARE TO BE TYPE 'P1' UNLESS NOTED OTHERWISE.
  - (G) ALL REINFORCED CONCRETE SUSPENDED SLABS, COLUMNS & BEAMS HAVE A MIN. FRR OF 1.5 HRS (AS DETERMINED BY CBC SB-2) UNLESS OTHERWISE STATED.

(A)	ISSUED FOR PLAN OF SUBDIVISION	14-04-2020
(B)	ISSUED FOR PLAN OF SUBDIVISION	08-04-2020

REVISIONS:

No.	DESCRIPTION	DATE

ARCHITECT SEAL:  NORTH ARROW: 

CLIENT:



ARCHITECT:  
**rla/architecture**  
 roderick lahey architect inc.  
 50 beech street, ottawa, ontario K1S 3J6  
 t. 613.724.9932 f. 613.724.1209 rlaarchitecture.ca

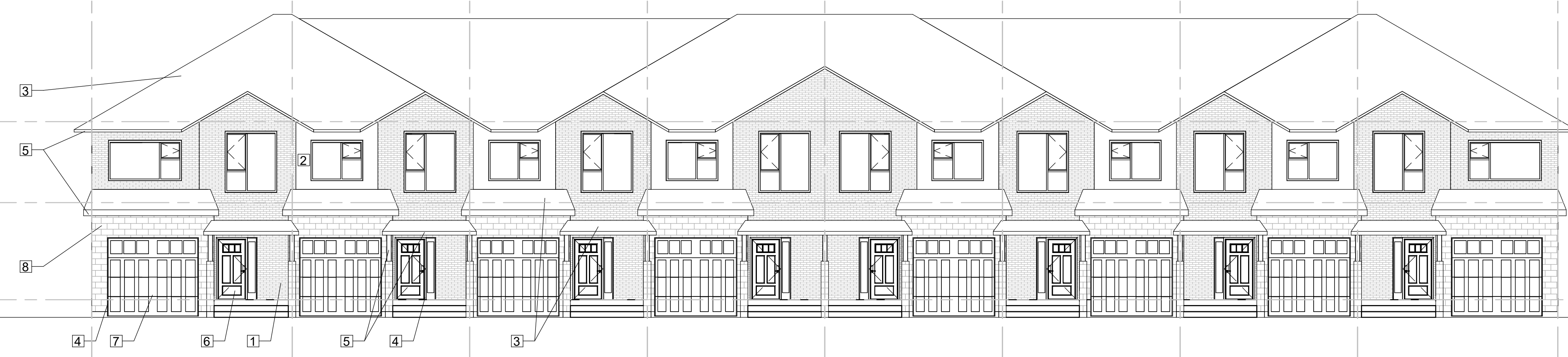
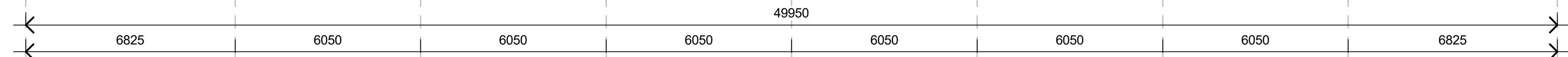
PROJECT TITLE:  
**1869 MAPLE GROVE ROAD**  
 OTTAWA ONTARIO

SHEET TITLE:  
**TYPICAL ELEVATIONS**

DRAWN: L.M.	CHECKED:
SCALE: 1:100	SHEET No. <b>SP-10</b>
PROJECT No. 1921	

D07-XX-XXXXXX

C-1X      C-2X      C-3X      C-4X      C-5X      C-6X      C-7X      C-8X      C-9X



C-9X      C-8X      C-7X      C-6X      C-5X      C-4X      C-3X      C-2X      C-1X



- MATERIAL PACKAGE - 1**
- 1 BRICK - ENDICOTT CLAY PRODUCTS - GREY BLEND
  - 2 SIDING - LONGBOARD - DARK CHERRY
  - 3 SHINGLES - DARK GREY
  - 4 WINDOW AND DOOR FRAMES - BLACK
  - 5 FACIA - BLACK
  - 6 FRONT DOOR - CHARCOAL GREY W. GLASS PANELS ALONG TOP
  - 7 GARAGE DOOR - CHARCOAL GREY W. GLASS PANELS ALONG TOP (NO GLASS PANELS ON ROLL UP DOOR)
  - 8 CUT STONE (OR OVERSIZED BRICK FROM BELDEN BRICK)

- MATERIAL PACKAGE - 2**
- 1 BRICK - ENDICOTT CLAY PRODUCTS - GREY BLEND
  - 2 SIDING - HARDIEBOARD - OCEAN BLUE
  - 3 SHINGLES - DARK GREY
  - 4 WINDOW AND DOOR FRAMES - BLACK
  - 5 FACIA - BLACK
  - 6 FRONT DOOR - OCEAN BLUE (MATCH TO HARDIEBOARD) W. GLASS PANELS ALONG TOP
  - 7 GARAGE DOOR - CHARCOAL GREY W. GLASS PANELS ALONG TOP (NO GLASS PANELS ON ROLL UP DOOR)
  - 8 CUT STONE (OR OVERSIZED BRICK FROM BELDEN BRICK)

- MATERIAL PACKAGE - 3**
- 1 BRICK - PERMACON - ROCKLAND BLACK
  - 2 SIDING - LONGBOARD - LIGHT CHERRY
  - 3 SHINGLES - DARK GREY
  - 4 WINDOW AND DOOR FRAMES - BLACK
  - 5 FACIA - BLACK
  - 6 FRONT DOOR - BURNT CARAMEL W. GLASS PANELS ALONG TOP
  - 7 GARAGE DOOR - CHARCOAL GREY W. GLASS PANELS ALONG TOP (NO GLASS PANELS ON ROLL UP DOOR)
  - 8 CUT STONE (OR OVERSIZED BRICK FROM BELDEN BRICK)