

**TOPOGRAPHICAL PLAN OF SURVEY
LOTS 12, 13, 14, 15, 16 AND
PART OF LOT 17
(North Slater Street)
AND
LOTS 14 & 15
(South Albert Street)
REGISTERED PLAN 3922
CITY OF OTTAWA**

Surveyed by Annis, O'Sullivan, Vollebakk Ltd.
REVISION NOTE: Hydro Pole Details added
August 31, 2015

Scale 1 : 200

METRIC SURVEYING PLAN FOR METERS AND
CAN BE CONVERTED TO FEET BY DIVIDING BY 0.3048

Surveyor's Certificate
1. This survey and plan are correct and in accordance with the
Surveyors Act, the Surveyors Act, the Land Titles Act and the
regulations made under them on the 28th day of March, 2014.
2. This survey was conducted on the 28th day of March, 2014.

April 1, 2014
Edward M. Gaudet
Ontario Land Surveyor

Notes & Legend

- Survey Monument Found
- Iron Bar
- Cut Cross
- Concrete Pin
- Witness
- Meas.
- Measured
- Annis, O'Sullivan, Vollebakk Ltd.
- (AOS)
- (AOS) Plan dated 1883 (1090)
- (P1)
- (P2)
- (P3)
- (P4)
- (P5)
- (P6)
- (P7)
- (P8)
- (P9)
- (P10)
- (P11)
- (P12)
- (P13)
- (P14)
- (P15)
- (P16)
- (P17)
- (P18)
- (P19)
- (P20)
- (P21)
- (P22)
- (P23)
- (P24)
- (P25)
- (P26)
- (P27)
- (P28)
- (P29)
- (P30)
- (P31)
- (P32)
- (P33)
- (P34)
- (P35)
- (P36)
- (P37)
- (P38)
- (P39)
- (P40)
- (P41)
- (P42)
- (P43)
- (P44)
- (P45)
- (P46)
- (P47)
- (P48)
- (P49)
- (P50)
- (P51)
- (P52)
- (P53)
- (P54)
- (P55)
- (P56)
- (P57)
- (P58)
- (P59)
- (P60)
- (P61)
- (P62)
- (P63)
- (P64)
- (P65)
- (P66)
- (P67)
- (P68)
- (P69)
- (P70)
- (P71)
- (P72)
- (P73)
- (P74)
- (P75)
- (P76)
- (P77)
- (P78)
- (P79)
- (P80)
- (P81)
- (P82)
- (P83)
- (P84)
- (P85)
- (P86)
- (P87)
- (P88)
- (P89)
- (P90)
- (P91)
- (P92)
- (P93)
- (P94)
- (P95)
- (P96)
- (P97)
- (P98)
- (P99)
- (P100)

NOTE #1: The Location of all Signal Triangles and Street Widening
is shown on this plan as indicated by the City of Ottawa and
any design work is undertaken by the City of Ottawa.

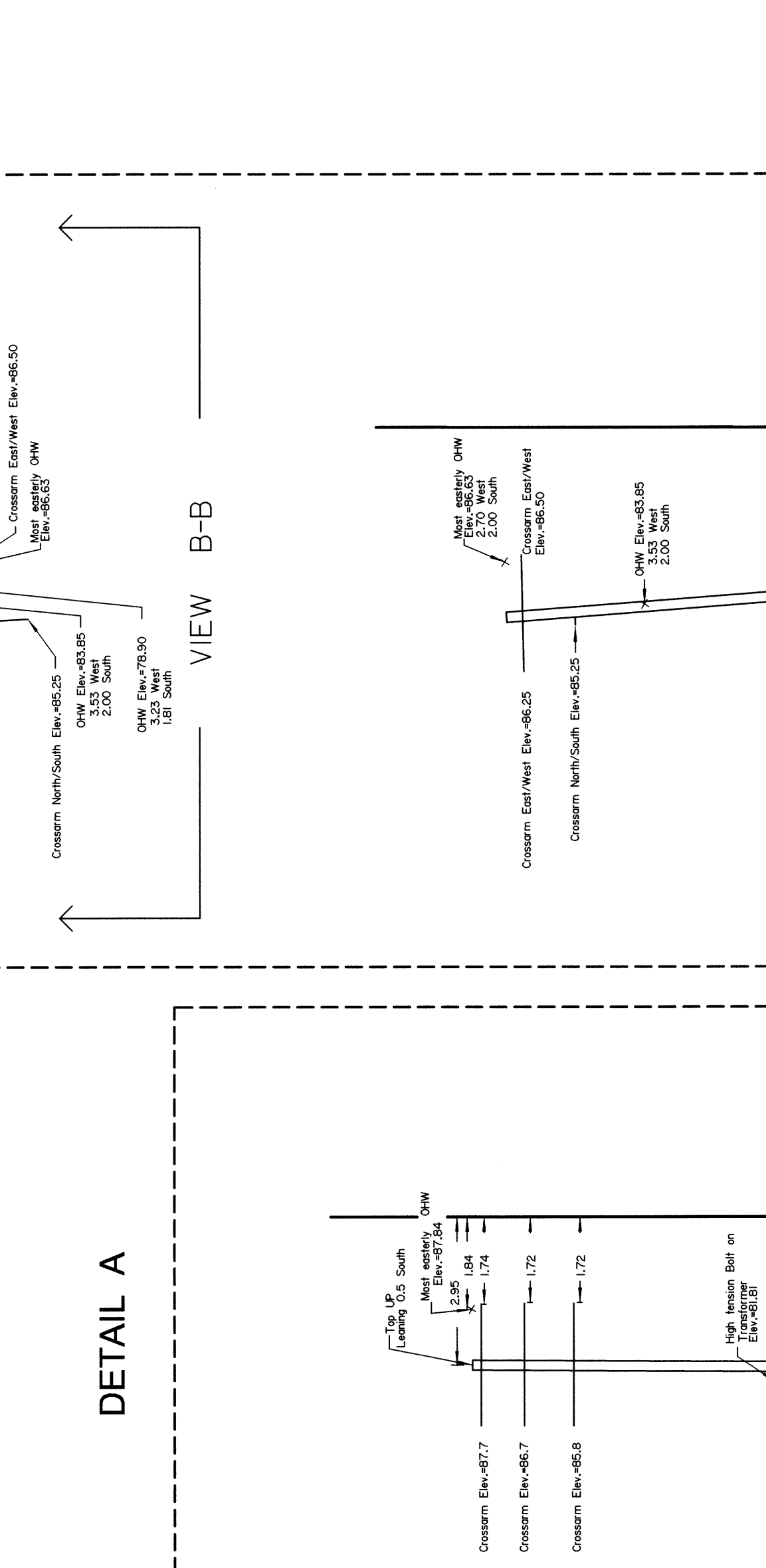
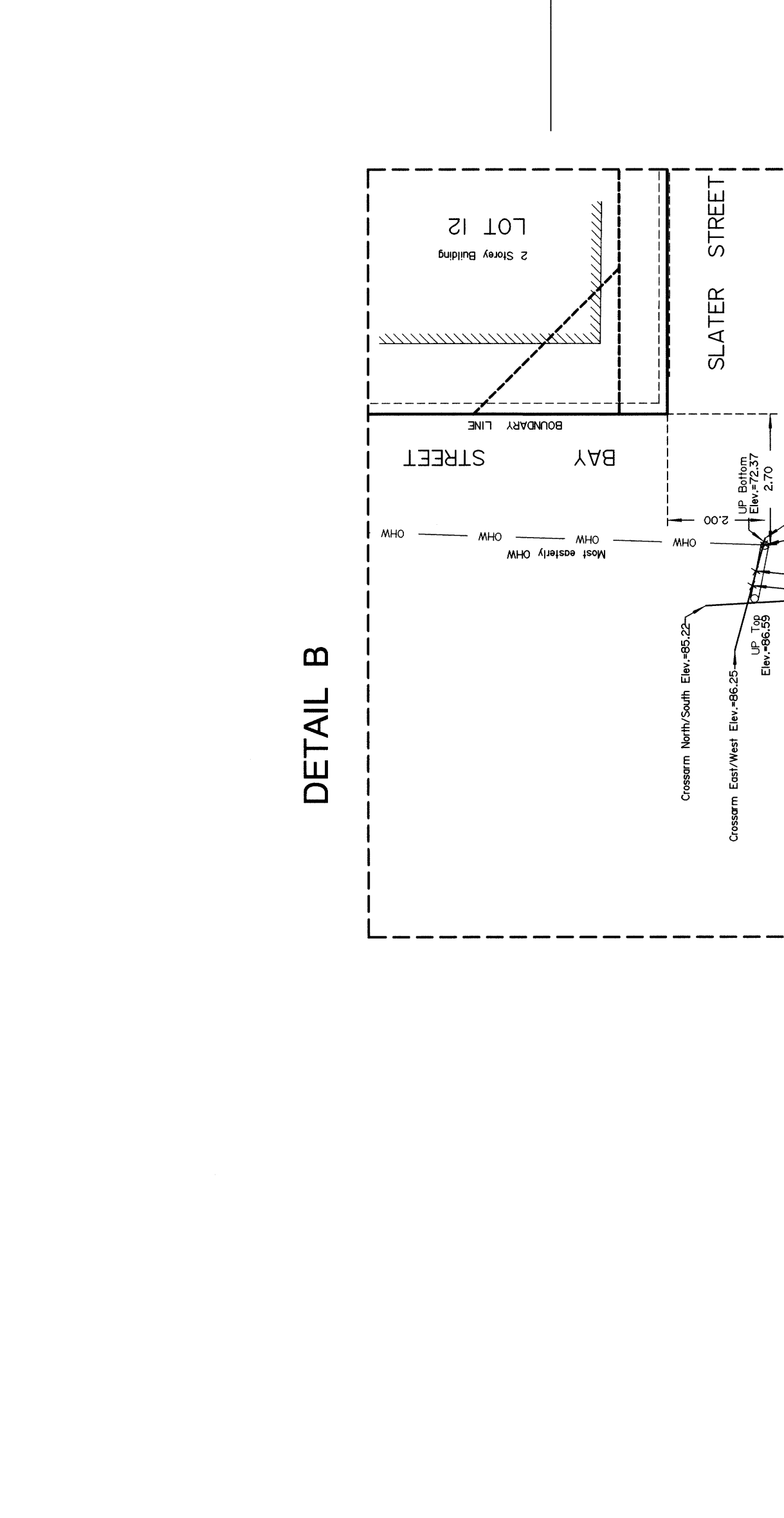
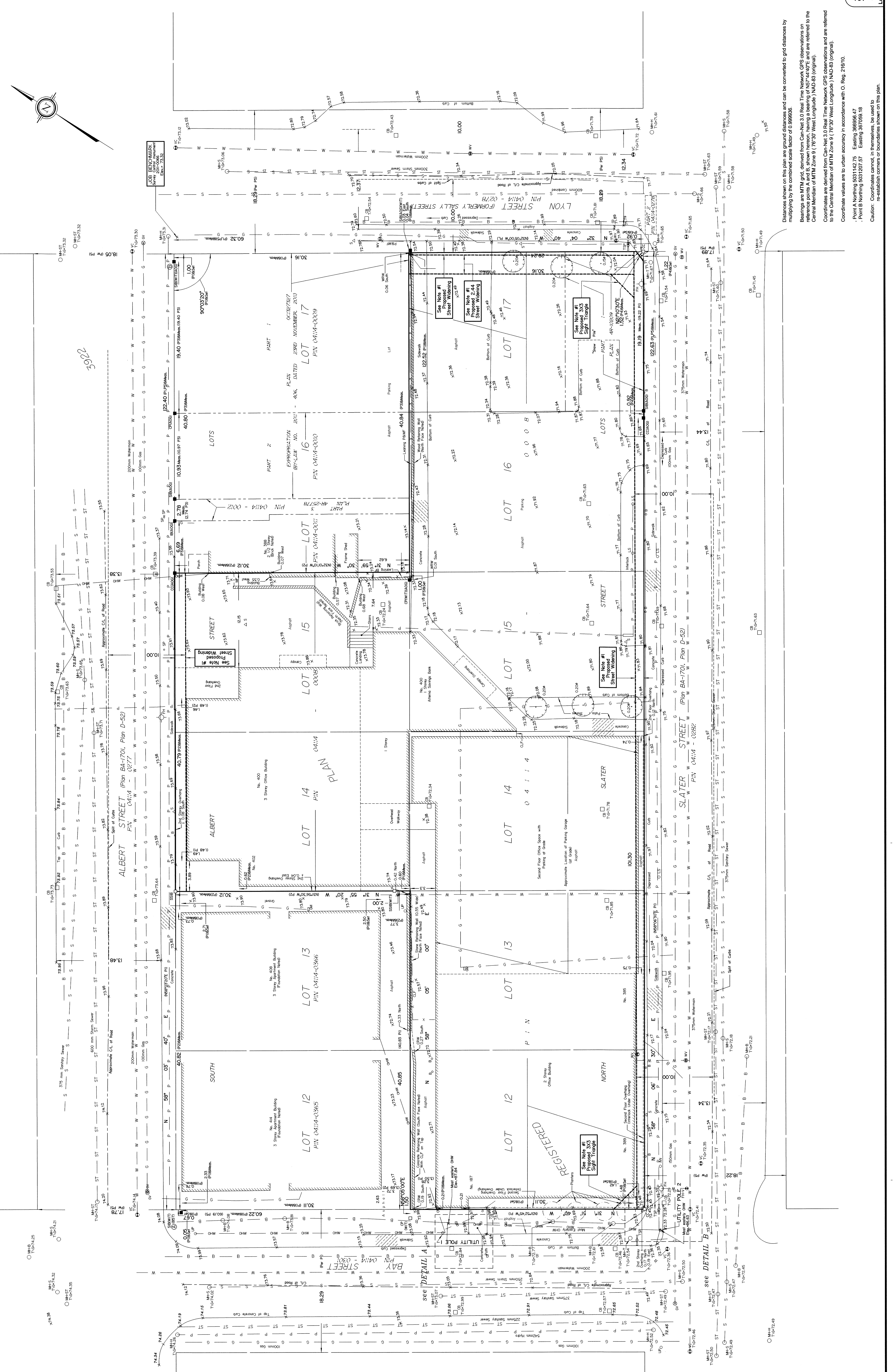
ELEVATION NOTES
1. Elevations shown are geoid and are referred to the CGVD25 geoid datum.
2. The elevations shown are for the ground surface and are not to be
used for any design work. The elevations shown are for the ground
surface and are not to be used for any design work.
3. The elevations shown are for the ground surface and are not to be
used for any design work. The elevations shown are for the ground
surface and are not to be used for any design work.

UTILITY NOTES
1. The utility shown on this plan are ground distances and can be converted to grid distances by
multiplying by the combined scale factor of 0.999893.
2. The utility shown on this plan are ground distances and can be converted to grid distances by
multiplying by the combined scale factor of 0.999893.
3. The utility shown on this plan are ground distances and can be converted to grid distances by
multiplying by the combined scale factor of 0.999893.

UTILITY NOTES
1. The utility shown on this plan are ground distances and can be converted to grid distances by
multiplying by the combined scale factor of 0.999893.
2. The utility shown on this plan are ground distances and can be converted to grid distances by
multiplying by the combined scale factor of 0.999893.
3. The utility shown on this plan are ground distances and can be converted to grid distances by
multiplying by the combined scale factor of 0.999893.

UTILITY NOTES
1. The utility shown on this plan are ground distances and can be converted to grid distances by
multiplying by the combined scale factor of 0.999893.
2. The utility shown on this plan are ground distances and can be converted to grid distances by
multiplying by the combined scale factor of 0.999893.
3. The utility shown on this plan are ground distances and can be converted to grid distances by
multiplying by the combined scale factor of 0.999893.

UTILITY NOTES
1. The utility shown on this plan are ground distances and can be converted to grid distances by
multiplying by the combined scale factor of 0.999893.
2. The utility shown on this plan are ground distances and can be converted to grid distances by
multiplying by the combined scale factor of 0.999893.
3. The utility shown on this plan are ground distances and can be converted to grid distances by
multiplying by the combined scale factor of 0.999893.



ANNIS, O'SULLIVAN, VOLLEBAKK LTD.
Registered Professional Surveyors
14 Concourse Gate, Suite 500
Nelson, Ont. K2F 7S6
Phone: (613) 734-1111
Fax: (613) 734-1112
www.aovltd.com