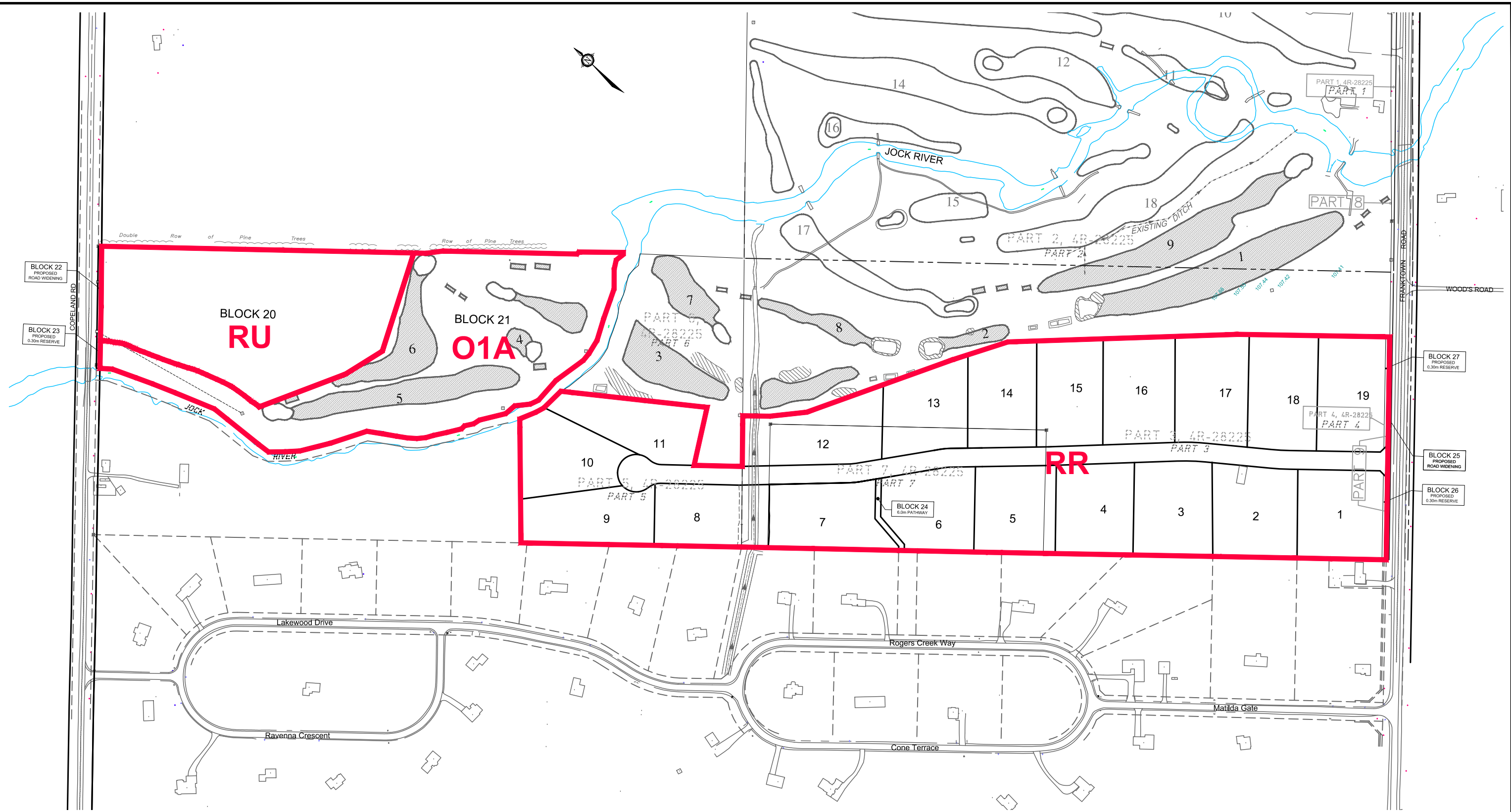


M:\2009\109097\CAD\planning\Figures\Planning Rationale\109097-ZN-FIG.dwg, Jun 28, 2017 - 12:52pm, wslss



Engineers, Planners & Landscape Architects
 Suite 200, 240 Michael Cowpland Drive
 Ottawa, Ontario, Canada K2M 1P6

Telephone (613) 254-9643
 Facsimile (613) 254-5867
 Website www.novatech-eng.com

RIVERBEND SUBDIVISION

PROPOSED ZONING

SCALE 1 : 3000

DATE JUNE 2017 JOB 109097 FIGURE ZN-FIG