



Copyright Reserved

The Contractor shall verify and be responsible for all dimensions. DO NOT scale the drawing - any errors or omissions shall be reported to Stantec without delay.
The Copyrights to all designs and drawings are the property of Stantec. Reproduction or use for any purpose other than that authorized by Stantec is forbidden.

Legend

- AREA ID
- RUNOFF COEFFICIENT
- STORM DRAINAGE AREA ha.
- STORM DRAINAGE BOUNDARY
- FUTURE STORM DRAINAGE BOUNDARY
- EXISTING STORM DRAINAGE BOUNDARY
- PROPOSED STORM SEWER
- FUTURE STORM SEWER
- MAJOR SYSTEM FLOW DIRECTION
- EMERGENCY OVERLAND FLOW DIRECTION
- MVCA 100 YEAR FLOODPLAIN PROVIDED BY MVCA FEBRUARY 2019
- MVCA MEANDER BELT PROVIDED BY MVCA FEBRUARY 2019
- MVCA REGULATION LIMIT PROVIDED BY MVCA FEBRUARY 2019
- 40m CORRIDOR AS PER HABITAT COMPENSATION BY MATRIX SOLUTIONS, INC. PROVIDED SEPTEMBER 29, 2023.

Notes

Revision	By	Appd.	YY.MM.DD
3	WAJ	KJK	24.01.12
2	WAJ	KJK	23.01.16
1	WAJ	AMP	20.08.18

Revision	By	Appd.	YY.MM.DD
3	WAJ	KJK	24.01.12
2	WAJ	KJK	23.01.16
1	WAJ	AMP	20.08.18

File Name:	WAJ	AMP	WAJ	20.06.11
160401347-SD.dwg	Dwn.	Chkd.	Dgn.	YY.MM.DD

Permit-Seal



Client/Project
3223701 CANADA INC.

BRIGIL - KANATA NORTH

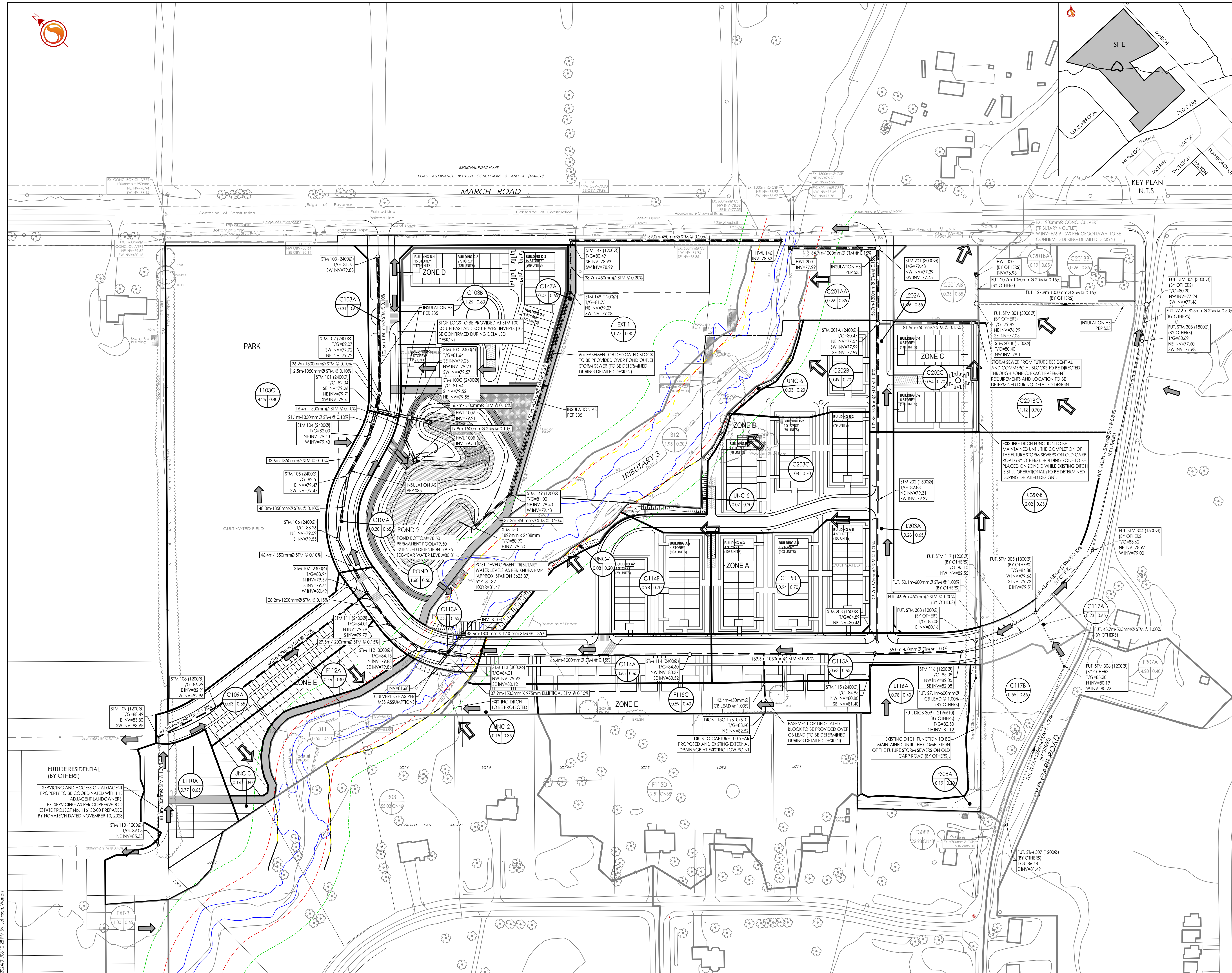
OTTAWA, ON

Title
CONCEPTUAL
OVERALL STORM DRAINAGE PLAN

Project No. 160401347 Scale 0 12.5 37.5 62.5m
1:1250

Drawing No. Sheet Revision

OSD-1 3 of 7 3



C:\Users\1641\OneDrive\Desktop\Brigil\Kanata North\design\drawings\160401347-SD.dwg
 2024/01/10 12:28 PM by: jbrantford
 ORIGINAL SHEET - ARCH D