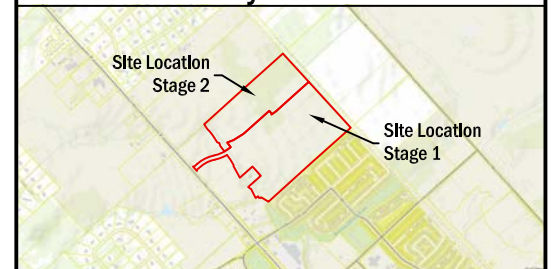


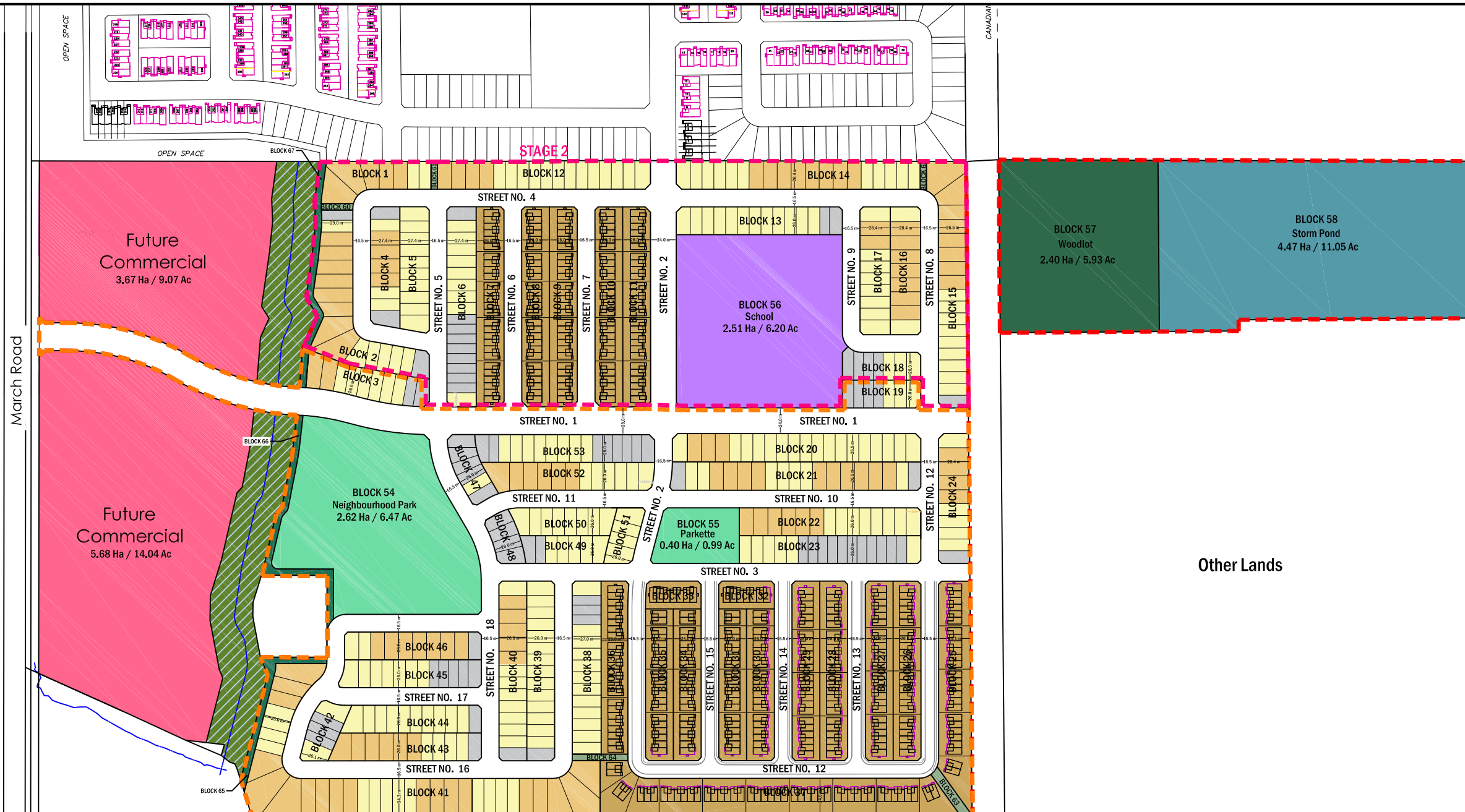
### Key Plan



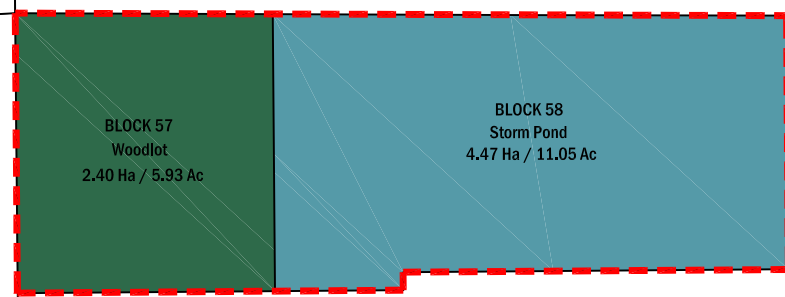
### Notes

1. All dimensions are in meters

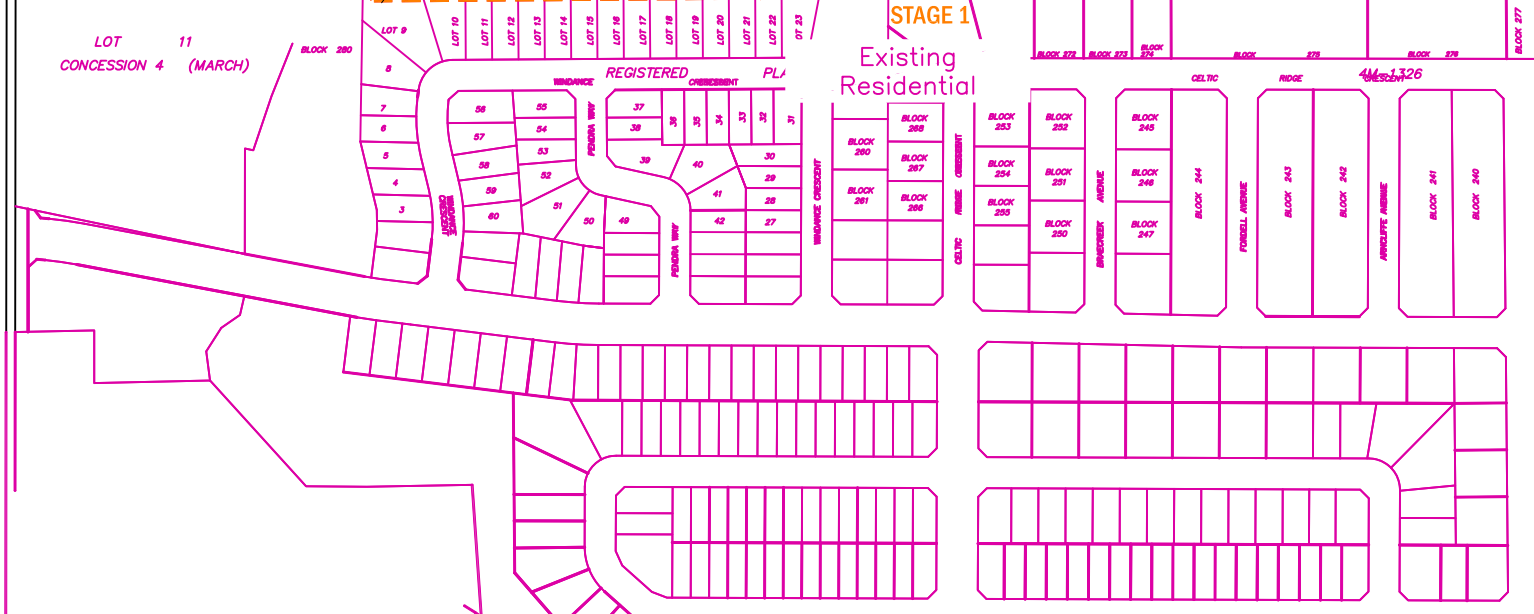
- Detached Singles
- Executive Townhomes
- Schools
- Parkland
- Woodlot
- Storm Water Management (SWM) Pond
- Future Commercial Lands
- Root Barrier Locations



March Road



Other Lands



Unit Type	Stage 1		Stage 2		Total	
<b>Singles</b>	<b>279</b>	<b>49%</b>	<b>155</b>	<b>53%</b>	<b>434</b>	<b>51%</b>
30'	55	20%	20	13%	75	17%
36'	156	56%	89	57%	245	56%
43'	68	24%	46	30%	114	26%
<b>Executive Towns</b>	<b>285</b>	<b>51%</b>	<b>135</b>	<b>47%</b>	<b>420</b>	<b>49%</b>
<b>Avenue Towns</b>	<b>0</b>	<b>0%</b>	<b>0</b>	<b>0%</b>	<b>0</b>	<b>0%</b>
<b>Rear Lane Towns</b>	<b>0</b>	<b>0%</b>	<b>0</b>	<b>0%</b>	<b>0</b>	<b>0%</b>
<b>Total</b>	564		290		854	
Parkland Required	= 854 units / 300units per ha				2.85 ha	
Parkland Dedicated	= 2.62 ha + 0.40 ha				3.02 ha	
<b>Overdedicated By</b>					<b>0.17 ha</b>	

0	Issued for Review	9-Jul-19	K.G.
No.	REVISION	DATE	BY

Project:  
**Kanata North (Fuller)**  
 936 March Road, Ottawa, ON

Title:  
**Concept 13**

Drawing:  
**CP-13**

Scale:  
**NTS**