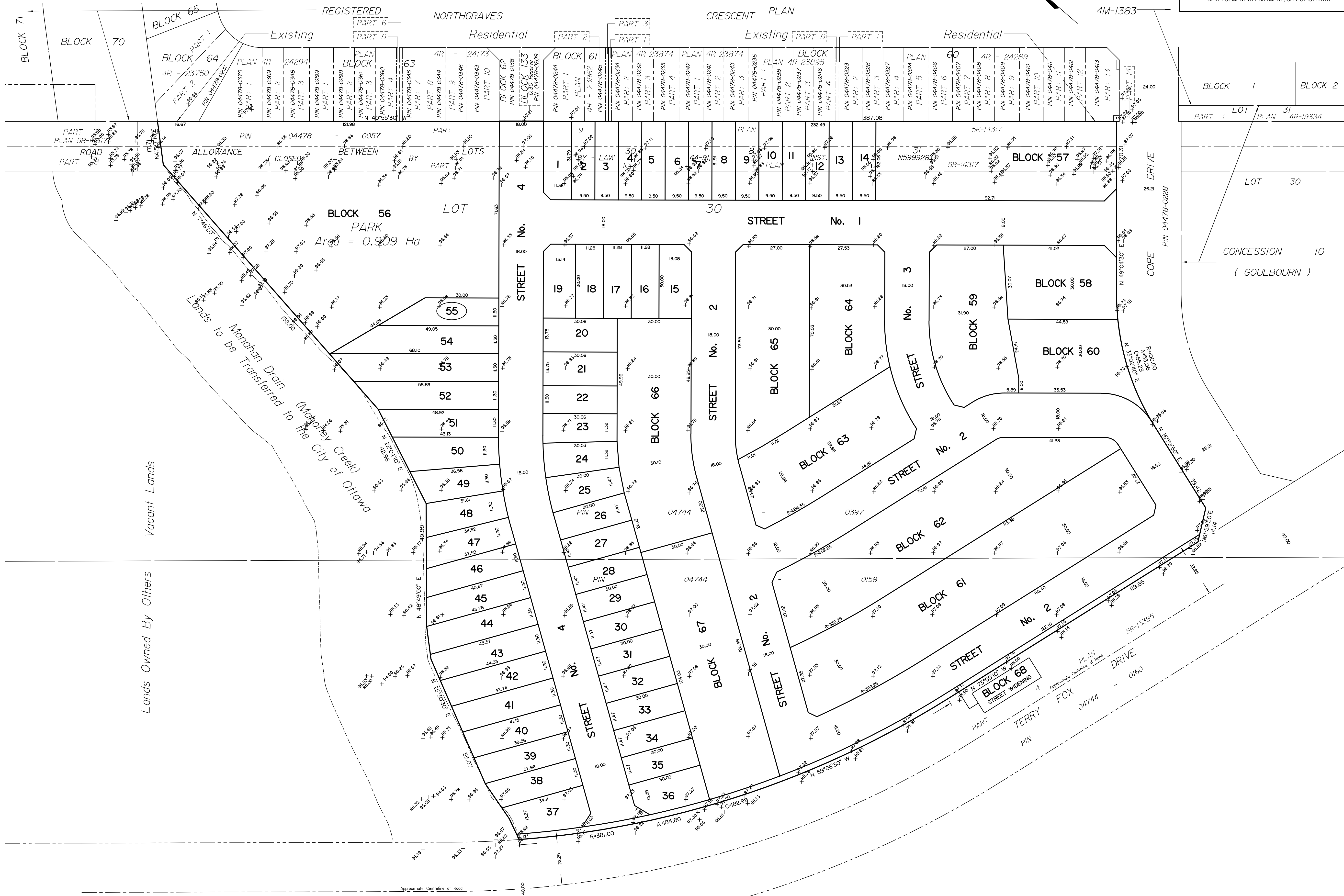
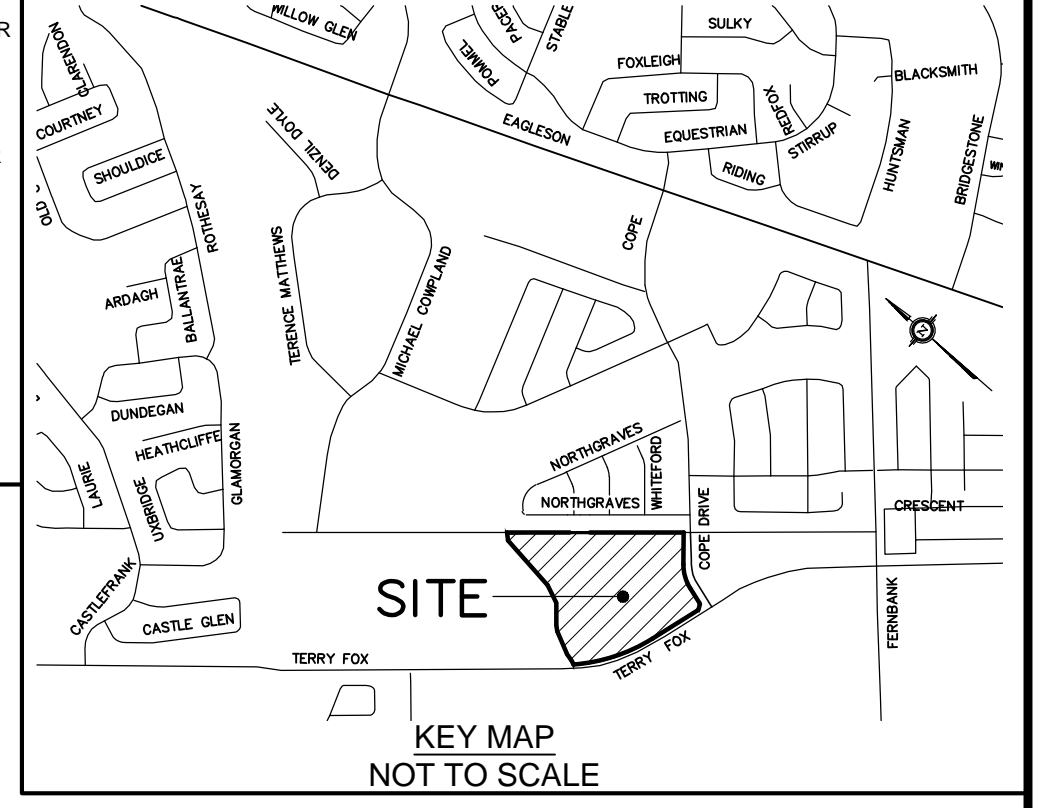


SUBJECT TO THE CONDITIONS, IF ANY, SET FORTH IN OUR LETTER DATED \_\_\_\_\_

THIS DRAFT PLAN IS APPROVED BY THE CITY OF OTTAWA UNDER SECTION 51 OF THE PLANNING ACT. THIS \_\_\_\_\_ DAY OF \_\_\_\_\_, 20\_\_\_\_.

DERRICK MOODIE, MANAGER  
DEVELOPMENT REVIEW-WEST  
PLANNING, INFRASTRUCTURE AND ECONOMIC  
DEVELOPMENT DEPARTMENT, CITY OF OTTAWA



**DRAFT PLAN OF SUBDIVISION OF PART OF LOT 30 And PART OF THE ROAD ALLOWANCE BETWEEN LOTS 30 And 31 (As Closed by By-Law 44-99, Inst. N599928) CONCESSION 10**  
Geographic Township of Goulbourn  
**CITY OF OTTAWA**  
Prepared by Annis, O'Sullivan, Vollebek Ltd.

Scale 1 : 750  
30 22.5 15 7.5 0 15 30 Metres

**Metric**  
DISTANCES SHOWN ON THIS PLAN ARE IN METRES AND CAN BE CONVERTED TO FEET BY DIVIDING BY 0.3048

**SURVEYOR'S CERTIFICATE**  
I CERTIFY THAT:  
The boundaries of the lands to be subdivided and their relationship to adjoining lands have been accurately and correctly shown.

Date \_\_\_\_\_ Andre Roy  
ONTARIO LAND SURVEYOR

**OWNER'S CERTIFICATE**  
This is to certify that we are the agents for the owners of the lands to be subdivided and that this plan was prepared in accordance with our instructions.

Date \_\_\_\_\_ Jim Burghout  
CLARIDGE HOMES INC.  
I have the authority to bind the corporation.

- ADDITIONAL INFORMATION REQUIRED UNDER SECTION 51-17 OF THE PLANNING ACT**
- (a) see plan
  - (b) see plan
  - (c) see plan
  - (d) multi-family residential housing
  - (e) see plan
  - (f) see plan
  - (g) see plan
  - (h) City of Ottawa
  - (i) see soils report
  - (j) see plan
  - (k) sanitary, storm sewers, municipal water, bell, hydro, cable and gas to be available
  - (l) see plan

TERRY FOX DRIVE  
PART 4 PLAN 5R-13385  
PIN 04744 0160