

I REQUIRE THIS PLAN TO BE DEPOSITED UNDER THE LAND TITLES ACT.  
DATE: \_\_\_\_\_

PLAN 4R- RECEIVED AND DEPOSITED DATE: \_\_\_\_\_

V. ANDREW SHELP  
ONTARIO LAND SURVEYOR

REPRESENTATIVE FOR LAND REGISTRAR FOR THE LAND TITLES DIVISION OF OTTAWA-CARLETON NO. 4.

SCHEDULE		
PART	LOT	CONCESSION
1		
2		
3		
4		
5		
6		
7		
8		
9		
10		
11		
12	PART OF 12	4
13		
14		
15		
16		
17		
18		
19		
20		

Parts 1 to 17 (both inclusive) and part 20 comprise all of PIN 04527-1004.

**DRAFT PLAN OF SURVEY OF PART OF LOT 12 CONCESSION 4**  
Geographic Township of March  
CITY OF OTTAWA  
Surveyed by Annis, O'Sullivan, Vollebek Ltd.

Scale 1: 1500

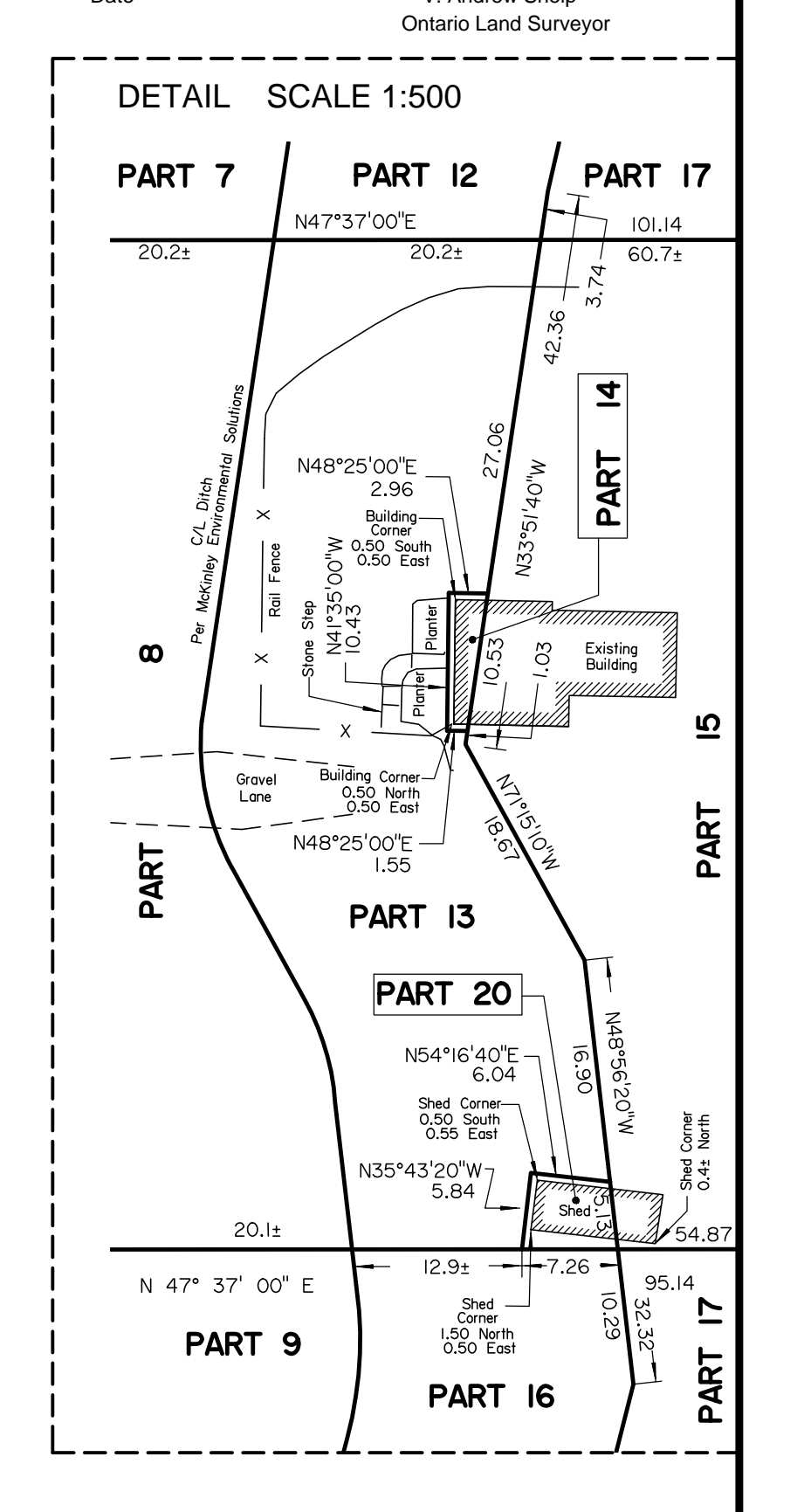
Metric DISTANCES AND COORDINATES SHOWN ON THIS PLAN ARE IN METRES AND CAN BE CONVERTED TO FEET BY DIVIDING BY 0.3048.

Surveyor's Certificate

I CERTIFY THAT:

- This survey and plan are correct and in accordance with the Surveys Act, the Surveyors Act and the Land Titles Act and the regulations made under them.
- The survey was completed on the \_\_\_ day of \_\_\_\_\_, 2018.

Date: \_\_\_\_\_  
V. Andrew Shelp  
Ontario Land Surveyor



**ANNIS, O'SULLIVAN, VOLLEBEK LTD.**  
14 Concourse Gate, Suite 500  
Napanee, ON K4E 7J8  
Phone: (613) 727-0850 / Fax: (613) 727-1079  
Email: Annis@anniso.com

Distances shown on this plan are ground distances and can be converted to grid distances by multiplying by the combined scale factor of 0.999918.

Bearings are grid, derived from Can-Net 2016 Real Time Network GPS observations on reference points A and B, shown hereon, having a bearing of Nxx°xx'x"W and are referenced to Specified Control Points 01919680037 and 01919791051, MTM Zone 9 (76°30' West Longitude) NAD-83 (original).

Coordinates are derived from Can-Net 2016 Real Time Network GPS observations referenced to Specified Control Points 01919680037 and 01919791051, MTM Zone 9 (76°30' West Longitude) NAD-83 (original).

Coordinate values are to urban accuracy in accordance with O. Reg. 216/10.

Caution: Coordinates cannot, in themselves, be used to re-establish corners or boundaries shown on this plan.

Point	Northing	Easting
Point A	5023507.89	351533.87
Point B	5032569.51	343633.72

Notes & Legend

- Denotes Survey Monument Planted
- Standard Iron Bar
- Short Standard Iron Bar
- Iron Bar
- Concrete Monument
- (W/T) Witness
- (AOG) Annis, O'Sullivan, Vollebek Ltd.
- Meas. Measured
- CL Centreline
- (P1) Plan 4R-29124
- (P2) Plan 4R-24361
- (P3) Plan 5R-14268
- OHW Overhead Wires