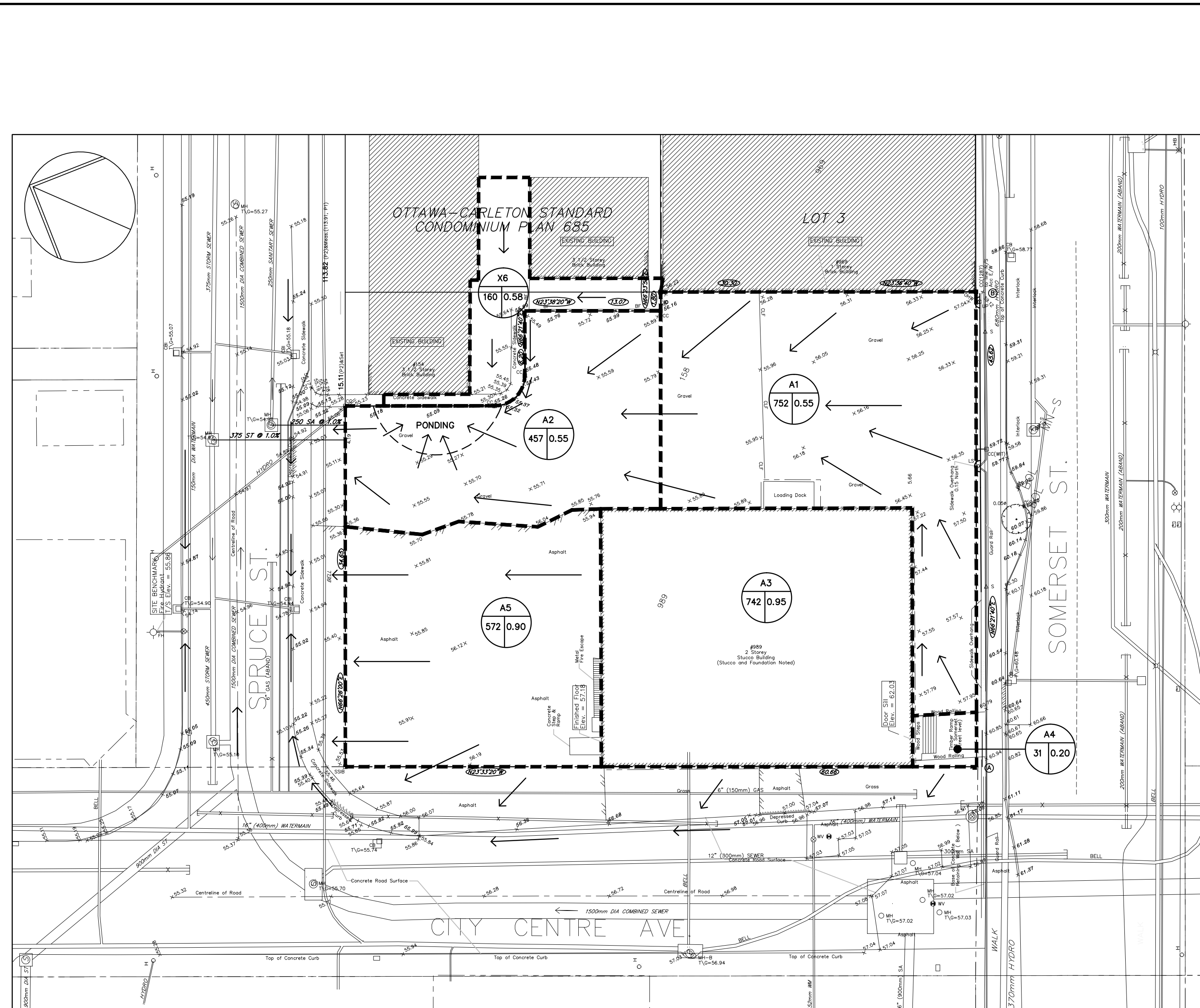


SCALE 1:300
0 5 10 15 20m
POST-DEVELOPMENT DRAINAGE



SCALE 1:300
0 5 10 15 20m
EXISTING DRAINAGE

LEGEND

- AREA I.D.#
- RUNOFF COEFF. (RATIONAL METHOD)
- AREA (sq.m.)
- DIRECTION OF SURFACE DRAINAGE RUNOFF

CAUTION:
THE EXACT LOCATION OF UNDERGROUND AND OVERHEAD UTILITIES IS APPROXIMATE ONLY AND MAY BE INCOMPLETE. THE CONTRACTOR IS RESPONSIBLE TO CONTACT ALL MUNICIPAL AUTHORITIES AND UTILITY COMPANIES TO DETERMINE EXACT LOCATION OF ALL SEWERS, WATERMANS, GAS, ELECTRICAL AND COMMUNICATIONS, CABLE TV AND OTHER UNDERGROUND INSTALLATIONS. THE CONTRACTOR IS SOLELY RESPONSIBLE FOR PROTECTION AGAINST DAMAGE OF ALL EXISTING INSTALLATIONS AND IS LIABLE FOR ALL COST SHOULD DAMAGE OCCUR.

POST DEVELOPMENT DRAINAGE DATA

AREA I.D.	TOTAL AREA (sq.m.)	RUNOFF COEFF. C	A x C	CONTROLLED/ UNCONTROLLED RELEASE	LOCATION
R1	410.1	0.90	369.1	CONTROLLED	MECH. P.H. ROOF
R2	517.7	0.90	465.9	CONTROLLED	12TH FLOOR ROOF
R3A	405.3	0.90	364.8	CONTROLLED	4TH FLR PODIUM ROOF
R3B	289.4	0.90	260.5	CONTROLLED	4TH FLR PODIUM ROOF
R4	51.4	0.90	46.3	CONTROLLED	MECH. P.H. ROOF
P5	493.9	0.9	444.5	CONTROLLED	GROUND LEVEL
P6	52.6	0.6	31.6	UNCONTROLLED	GROUND LEVEL
P7	48.3	0.2	9.7	CONTROLLED	GROUND LEVEL
T8	67.6	0.90	60.8	CONTROLLED	4TH FLOOR TERRACE
T9	87.9	0.90	79.1	CONTROLLED	12TH FLOOR TERRACE
P10	70.9	0.9	63.8	UNCONTROLLED	GROUND LEVEL
P11	15.1	0.9	13.6	CONTROLLED	2ND FLOOR ENTRANCE
P12	6.8	0.2	1.4	CONTROLLED	PLANTER
P13	4.4	0.9	4.0	UNCONTROLLED	2ND FLOOR COMM. ENT.
P14	16.6	0.2	3.3	CONTROLLED	PLANTER
P15	6.0	0.9	5.4	UNCONTROLLED	2ND FLOOR COMM. ENT.
P16	9.7	0.2	1.9	CONTROLLED	PLANTER
TOTAL SITE	2553.7		2226.9		
X6*	160	0.58	92.8	CONTROLLED	GROUND AREA/ CONDO No. 685
TOTAL	2713.7		2319.7		

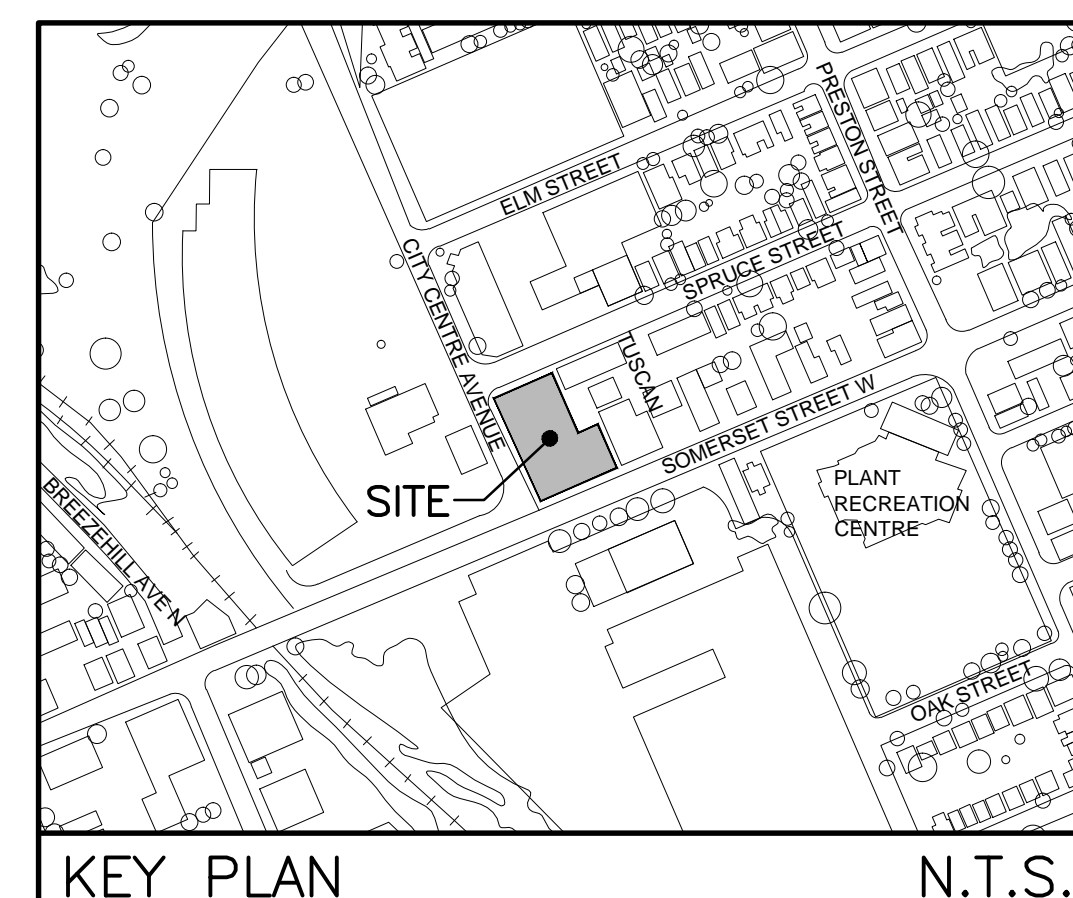
	CONTROLLED	AREA (%) m ²	A X C (%)
TOTAL SITE		2419.8 (95%)	2131 (95%)
	UNCONTROLLED	133.9 (5%)	104.8 (5%)
	TOTAL	2553.7 (100%)	2318.4 (100%)

	CONTROLLED	AREA (%) m ²	A X C (%)
TOTAL SITE + EXTERNAL AREA		2579.8 (95%)	2223.8 (95%)
	UNCONTROLLED	133.9 (5%)	104.8 (5%)
	TOTAL	2713.7 (100%)	2411.2 (100%)

EXISTING DRAINAGE DATA

AREA I.D.	TOTAL AREA (sq.m.)	RUNOFF COEFF. C	A x C
A1	752	0.55	413.6
A2	457	0.55	251.4
A3	742	0.95	704.9
A4	31	0.20	6.2
A5	572	0.90	514.8
TOTAL SITE	2554		1890.9
X6	160	0.58	92.8
TOTAL	2714		1983.7

* X6 - EXTERNAL TO SITE



KEY PLAN
N.T.S.

1 MAR 5/14 SITE PLAN APPLICATION
0 MAR 4/14 ISSUED FOR CLIENT REVIEW
no. date revision

erion associates
consulting civil engineers

1 beckwith st. east
perth, on, k7h 1b2
613-267-1693
erion@sympatico.ca

owner
domicile CONSTRUCTION CORP.
3714 RICHMOND ROAD, SUITE 1 OTTAWA, ONTARIO K2A 0E7
project
989 SOMMERSET ST. WEST
PROPOSED MIXED USE CONDOMINIUM (RESIDENTIAL/RETAIL)
OTTAWA ONTARIO

drawing title
STORM DRAINAGE AREA PLAN

drawn MarCAD	date DEC 2013	scale 1:300
project EA 13-272		drawing no. SDA-3
drawing no.		revision no. 1