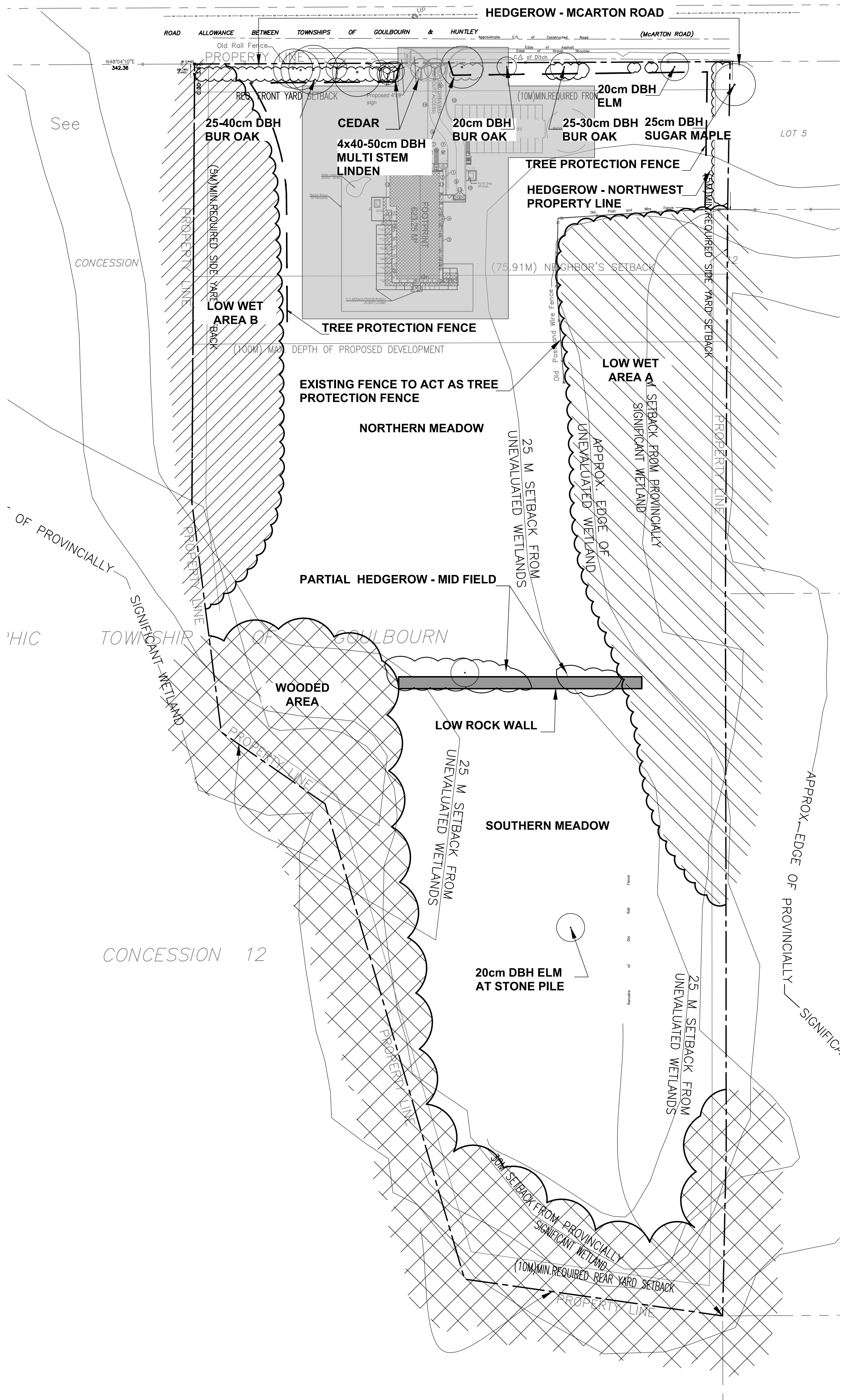


THIS PLAN IS ISSUED FOR SITE PLAN CONTROL ONLY. ADDITIONAL DETAILING AND SPECIFICATIONS ARE REQUIRED PRIOR TO TENDERING AND CONSTRUCTION.



EXISTING VEGETATION PLAN
SCALE: 1:1000

EXISTING VEGETATION

HEDGEROW - MCARTON ROAD
HEDGEROW CONSISTS OF A MIX OF DECIDUOUS AND CONIFEROUS TREES, SOLID ALONG THE SOUTHWEST HALF; OPENINGS ALONG THE NORTHEAST HALF. TREES CONSISTS OF BUR OAK, LINDEN, ELM, CEDAR, WITH SAPLINGS OF HAWTHORN AND BUCKTHORN. POISON IVY IN GROUND COVER.
TREES SIZE: RANGE FROM SAPLINGS TO 50CM DBH (MULTISTEM LINDEN). 25-40CM DBH BUR OAK AND CEDAR ALONG THE SOUTHEAST HALF.
CONDITION: MAJORITY ARE IN GOOD CONDITION WITH GOOD CANOPY. SOME OF THE CEDARS HAVE DAMAGED TOPS.

HEDGEROW - NORTHWEST PROPERTY LINE
HEDGEROW ALONG NORTHERN PORTION OF PROPERTY LINE - STRADDLING PROPERTY LINE. TREES CONSISTS OF SUGAR MAPLE, SCOTS PINE, WITH AN UNDERSTORY OF YOUNG CEDAR AND PINE, DIERVILLA, POISON IVY, SOME BUCKTHORN.
TREES SIZE: MATURE SCOTS PINE AND SEMI MATURE SUGAR MAPLE RANGE FROM 25-40CM DBH.
CONDITION: MAJORITY ARE IN GOOD CONDITION WITH GOOD CANOPY.

PARTIAL HEDGEROW - MID FIELD
PARTIAL HEDGEROW ALONG LOW FARMER'S STONE WALL. TREES CONSISTS OF CEDAR, HAWTHORN, ELM.
TREES SIZE: RANGE FROM SAPLINGS TO 20CM DBH.
CONDITION: MAJORITY ARE IN FAIR TO GOOD CONDITION WITH GOOD CANOPY.

LOW WET AREA A
THIS AREA IS ADJACENT OT THE SIGNIFICANT WETLANDS (OFF PROPERTY) AND CONSISTS OF WETLANDS GRASSES (SEDGES, RUSHES), SHRUBS (ALDER, WILLOW) AND SMALL TREES (TAMARACK, ELM, ASH, POPLAR, SOME SPRUCE ALONG EDGES). THIS AREA REMAINS WET.
TREES SIZE: RANGE FROM SAPLINGS TO 20CM DBH.
CONDITION: MAJORITY ARE IN FAIR TO GOOD CONDITION. ELM AND ASH ARE DEAD OR IN POOR CONDITION. TAMARACK AND SPRUCE IN GOOD CONDITION.

LOW WET AREA B
THIS AREA CONSISTS OF MAINLY OF POPLAR, WITH SOME ELM, AND ASH WITH AN UNDERGROWTH OF SEDGE GRASSES.
TREES SIZE: RANGE FROM SAPLINGS TO 15CM DBH.
CONDITION: MAJORITY ARE IN FAIR TO GOOD CONDITION. ELM AND ASH ARE DEAD OR IN POOR CONDITION.

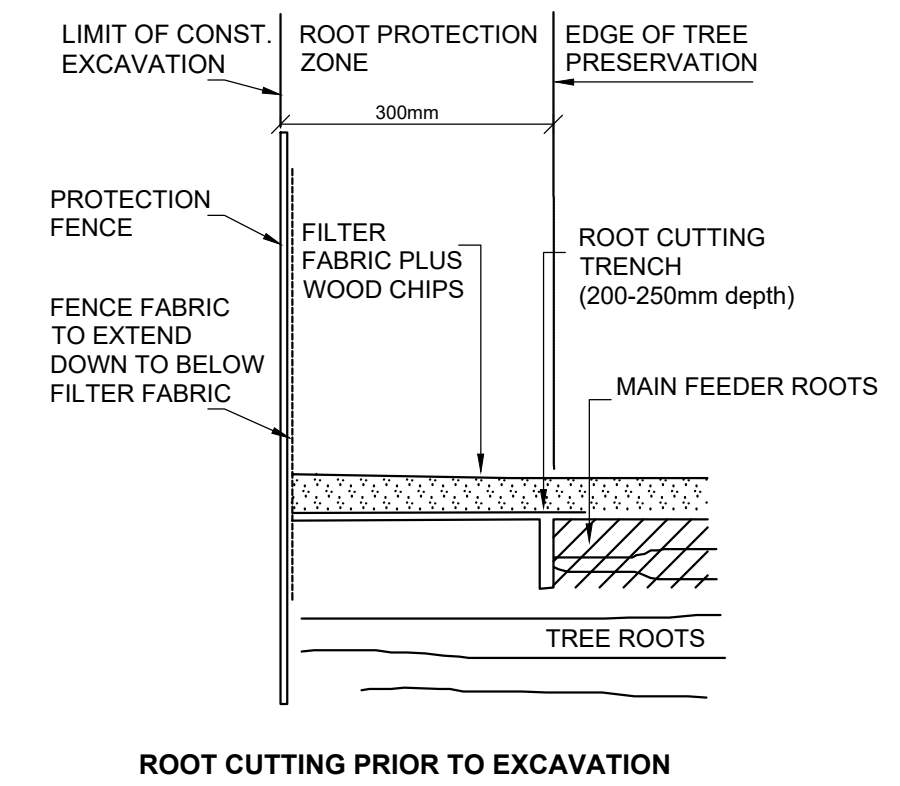
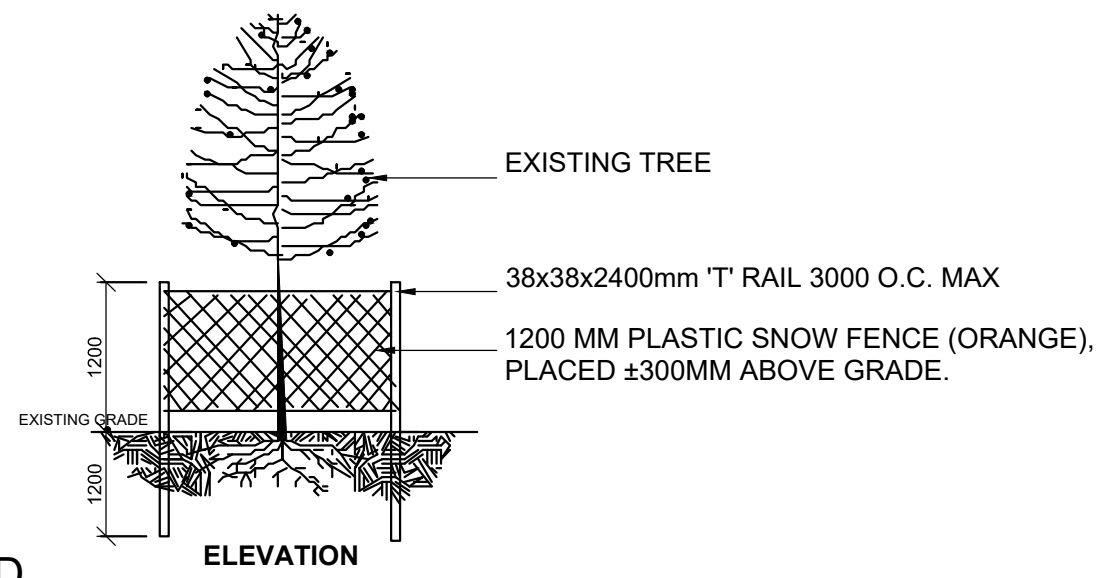
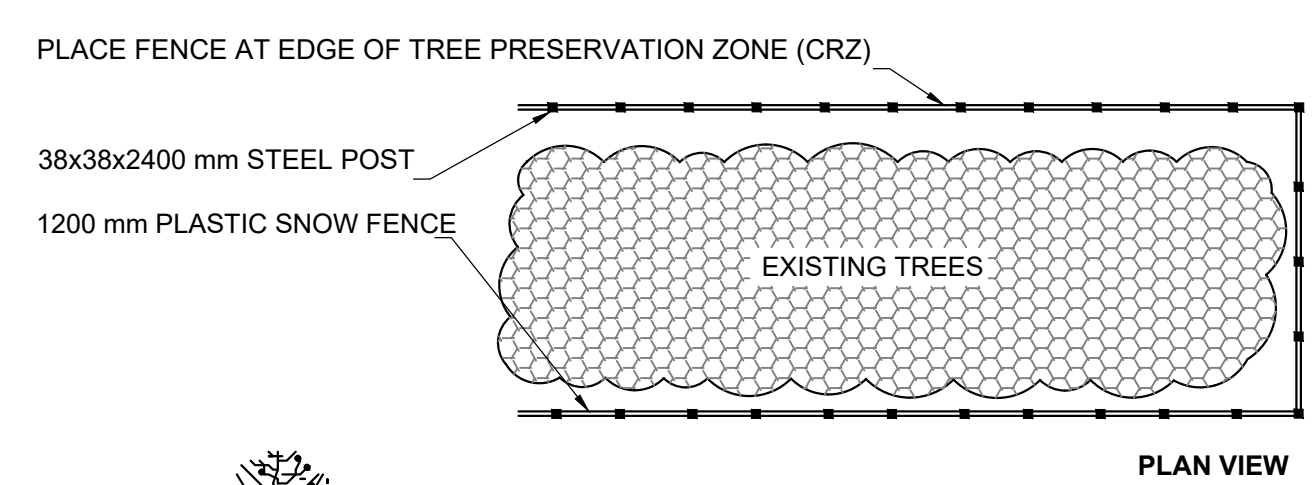
WOODED AREA
THIS AREA IS ADJACENT OT THE SIGNIFICANT WETLANDS (OFF PROPERTY) AND CONSISTS OF A RANGE OF DECIDUOUS (BIRCH, POPLAR, ELM, ASH) AND CONIFEROUS TREES (CEDAR, SPRUCE) WITH AN UDERGROWTH OF SPARSE FERNS, SASPARILLA, POISON IVY. EDGE GROWTH CONSISTS OF DECIDUOUS SHRUBS AND SAPLINGS (DIERVALLA, HAWTHORN, BUCKTHORN, POPLAR, SPRUCE, SERVICEBERRY)
TREES SIZE: RANGE FROM SAPLINGS TO 40CM DBH.
CONDITION: MAJORITY ARE IN FAIR TO GOOD CONDITION. ELM AND ASH ARE IN POOR CONDITION.

NORTHERN MEADOW
CONSISTS OF A GOOD RANGE OF MEADOW GRASSES AND WILD FLOWERS SUCH AS TIMOTHY, ALFALFA, MILKWEED, RUDBECKIA, DAISY, ST JOHN'S WORT, BUTTERCUP, ASTER. SEDGE GRASSES MORE PREVALENT FURTHER SOUTH.

SOUTHERN MEADOW
MEADOW GRASSES CONSISTS OF SAME SPECIES AS NORTHERN HALF, BUT WITH SEDGE GRASSES AS THE PREVALENT SPECIES. A FEW NATURALIZING SPECIES SUCH AS SPREADING JUNIPER, POPLAR, HAWTHORN. ONE SINGLE ELM (20CM DBH) AT CENTRAL STONE PILE IN GOOD CONDITION.

LEGEND:

- EXISTING VEGETATION TO REMAIN
- EXISTING VEGETATION TO BE REMOVED
- TREE PROTECTION FENCE
- DEVELOPMENT AREA



- NOTES:**
- PROVIDE PROTECTION FOR TREES SHOWN AS REQUIRING PROTECTION ON CONTRACT DRAWINGS USING METHOD SHOWN. WHERE OPERATIONS THREATEN OTHER NEARBY TREES, APPLY SAME MEASURES.
 - PROTECT ROOTS OF ALL TREES AS SHOWN ABOVE. NO EXCAVATION, FILLING, STORAGE OF MATERIALS, DISPOSAL OF CHEMICALS, VEHICLE TRAFFIC, OR OTHER ACTIVITY WHICH COULD CAUSE DISTURBANCE OF SOIL ROOT AREA, INCLUDING SOIL COMPACTION SHALL TAKE PLACE WITHIN THE PROTECTED AREA.

- THE CITY OF OTTAWA TREES BY-LAW REQUIRES THAT CONTRACTORS WORKING NEAR TREES MUST:
- ERECT A FENCE AT THE CRITICAL ROOT ZONE (CRZ) OF TREES;
 - NOT PLACE ANY MATERIAL OR EQUIPMENT WITHIN THE CRZ OF THE TREE;
 - NOT ATTACH ANY SIGNS, NOTICES OR POSTERS TO ANY TREE;
 - NOT RAISE OR LOWER THE EXISTING GRADE WITHIN THE CRZ WITHOUT APPROVAL;
 - TUNNEL OR BORE WHEN DIGGING WITHIN THE CRZ OF A TREE;
 - NOT DAMAGE THE ROOT SYSTEM, TRUNK OR BRANCHES OF ANY TREE;
 - ENSURE THAT EXHAUST FUMES FROM ALL EQUIPMENT ARE NOT DIRECTED TOWARDS ANY TREE'S CANOPY.

CRITICAL ROOT ZONE (CRZ) OF A TREE:
D (DIAMETER OF TRUNK IN CENTIMETERS) X 10CM = CRITICAL ROOT ZONE. THE CRITICAL ROOT ZONE IS ESTABLISHED AS BEING 10 CENTIMETRES FROM THE TRUNK OF A TREE FOR EVERY CENTIMETRE OF TRUNK DIAMETER. THE TRUNK DIAMETER IS MEASURED AT A HEIGHT OF 1.2 METRES FOR TREES OF 15 CENTIMETRES DIAMETER AND GREATER AND AT A HEIGHT OF 0.3 METRES FOR TREES OF LESS THAN 15 CENTIMETRES DIAMETER. THE CONTRACTOR MUST OBTAIN ALL PERMITS AND APPROVALS PRIOR TO THE START OF CONSTRUCTION. THE CONTRACTOR MUST CALL A CITY TREE INSPECTOR WHEN WORK IS REQUIRED NEAR A CITY TREE.

TREE PROTECTION AND ROOT CUTTING DETAIL

1	Requested SPC revisions	Sep. 20/19
1	Issued for SPC	Aug. 08/19
no.	issue / revision	date

seal

north

Ruhland & Associates Ltd
200-1750 Courtwood Crescent, Ottawa, Ontario K3C 3B5
P (613) 224-4744 x 232 F (613) 224-1131 info@rala.ca www.rala.ca

project
WILD BIRD CARE CENTER
8520 McArton Road,
Ottawa, ON.

drawing title
TREE CONSERVATION PLAN

scale 1:200	drawn by M. Malkov	designed by R. Ruhland
date October, 2016	checked by R. Ruhland	plot date Sep. 20/19

project number 18 - 1556	drawing number L - 01
------------------------------------	---------------------------------

Contractor to check and verify all dimensions on the job