

SCHEDULE			
PART	LOT	CONCESSION	PIN
1			
2	PART OF 4	12	PART OF PIN 04444-0010
3			

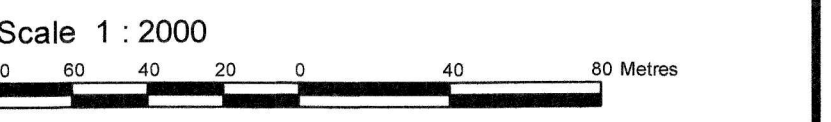
I REQUIRE THIS PLAN TO BE DEPOSITED UNDER THE LAND TITLES ACT.  
 DATE: \_\_\_\_\_

**PLAN 4R-**  
 RECEIVED AND DEPOSITED DATE: \_\_\_\_\_

-----  
 RICHARD R. GAUTHIER  
 ONTARIO LAND SURVEYOR

-----  
 REPRESENTATIVE FOR  
 LAND REGISTRAR FOR THE  
 LAND TITLES DIVISION OF  
 OTTAWA-CARLETON NO. 4.

**PLAN OF SURVEY OF**  
**PART OF LOT 4**  
**CONCESSION 12**  
**Geographic Township of Goulbourn**  
**CITY OF OTTAWA**



**Metric**  
 DISTANCES AND COORDINATES SHOWN ON THIS PLAN ARE IN METRES AND CAN BE CONVERTED TO FEET BY DIVIDING BY 0.3048.

- Surveyor's Certificate**  
 I CERTIFY THAT:
- This survey and plan are correct and in accordance with the Surveys Act, the Surveyors Act and the Land Titles Act and the regulations made under them.
  - The survey was completed on the 26th day of September, 2018.

Nov 14<sup>th</sup> 2018  
 Date

*Richard R. Gauthier*  
 Richard R. Gauthier  
 Ontario Land Surveyor

Distances shown on this plan are ground distances and can be converted to grid distances by multiplying by the combined scale factor of 0.999902.

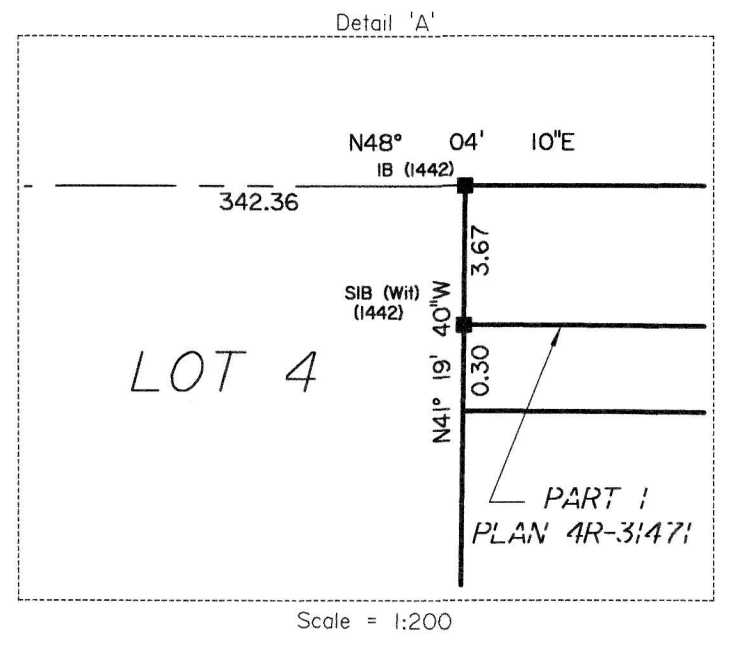
Bearings are grid, derived from Can-Net 2016 Real Time Network GPS observations on reference points A and B, shown hereon, having a bearing of  $N48^{\circ}04'10''E$  and are referenced to MTM Zone 9 (  $76^{\circ}30'$  West Longitude ) NAD-83 (CSRS).

Coordinate values are to rural accuracy in accordance with O. Reg. 216/10.

Point A Northing 5006644.46 Easting 339101.19  
 Point B Northing 5007093.84 Easting 339601.47

Caution: Coordinates cannot, in themselves, be used to re-establish corners or boundaries shown on this plan.

- Notes & Legend**
- Denotes Survey Monument Planted
  - " Survey Monument Found
  - SIB " Standard Iron Bar
  - SSIB " Short Standard Iron Bar
  - IB " Iron Bar
  - CP " Concrete Pin
  - (Wit) " Witness
  - (1152) " John E. Kihl OLS
  - (1600) " G.A. Smith OLS
  - Meas. " Measured
  - (P) " Plan 4R-18500
  - (P1) " Plan 4R-19966



**JOHN H. KENNEDY LTD.**  
 ONTARIO & CANADA LANDS SURVEYORS  
 KEMPTVILLE PORTLAND  
 Ref: 2018 - 10 - 085