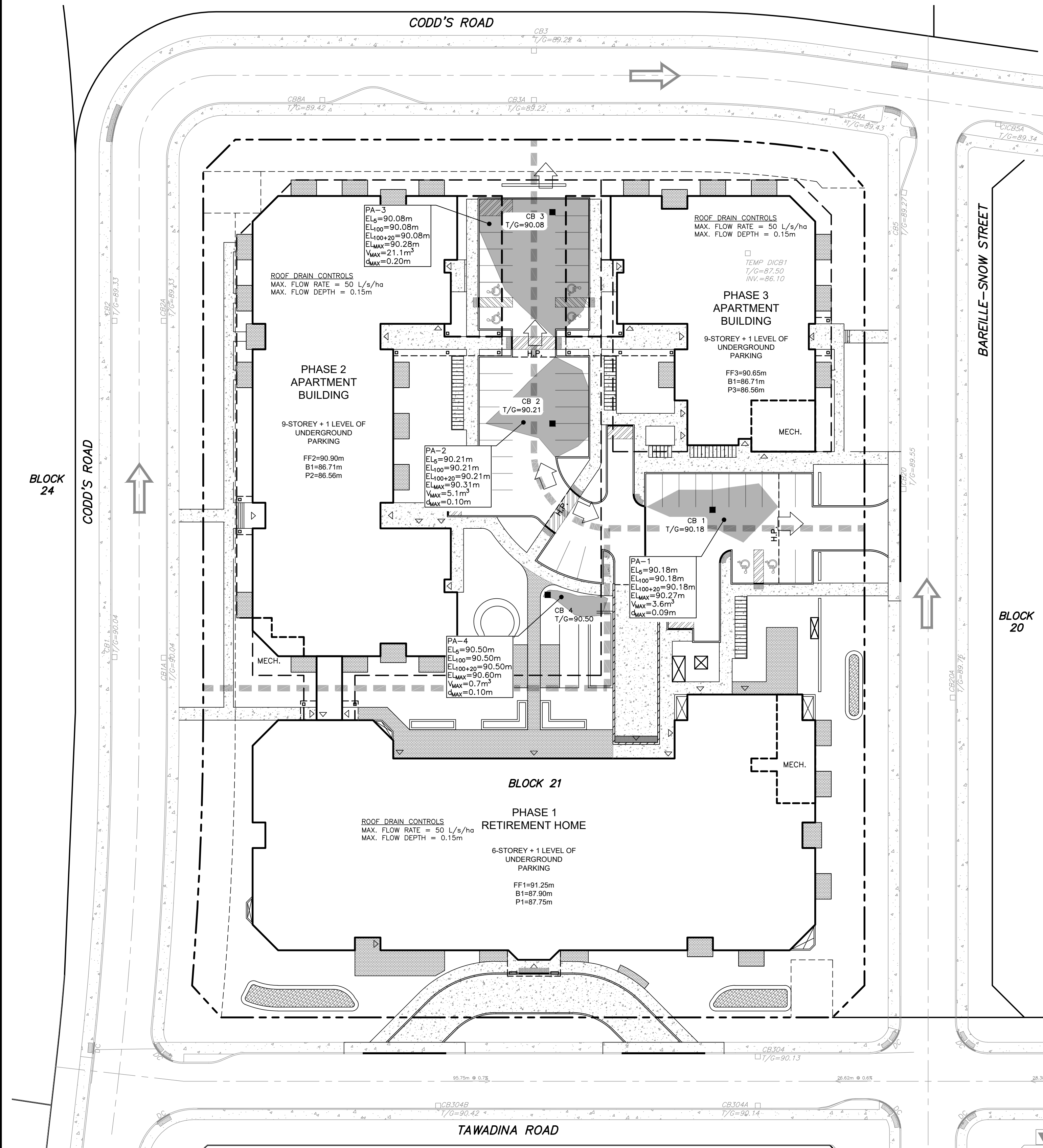


**LEGEND**

- PROPERTY BOUNDARY
- PHASING LIMIT
- EASEMENT
- EXISTING CATCH BASIN
- CATCH BASIN
- BUILDING ENTRANCE
- 100-YR PONDING LIMIT
- HIGH POINT
- MAJOR OVERLAND FLOW ROUTE
- EXTERNAL MAJOR OVERLAND FLOW ROUTE
- MAX. STATIC PONDING LIMIT

- PA-1 PONDING AREA ID
- EL<sub>5</sub> 5-YEAR PONDING ELEVATION
- EL<sub>100</sub> 100-YEAR PONDING ELEVATION
- EL<sub>100+20</sub> 100-YEAR + 20% PONDING ELEVATION
- EL<sub>MAX</sub> MAXIMUM STATIC PONDING ELEVATION
- V<sub>MAX</sub> MAXIMUM AVAILABLE SURFACE STORAGE
- Δ<sub>MAX</sub> MAXIMUM STATIC PONDING DEPTH



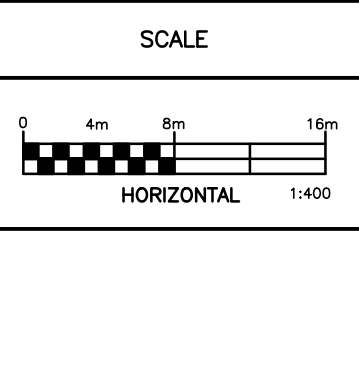
**NOT FOR CONSTRUCTION**

**NOTES**

THE POSITION OF ALL POLE LINES, CONDUITS, WATERMANS, SEWERS AND OTHER UNDERGROUND AND OVERGROUND UTILITIES AND STRUCTURES IS NOT NECESSARILY SHOWN ON THE CONTRACT DRAWINGS, AND WHERE SHOWN, THE ACCURACY OF THE POSITION OF SUCH UTILITIES AND STRUCTURES IS NOT GUARANTEED. BEFORE STARTING WORK, DETERMINE THE EXACT LOCATION OF ALL SUCH UTILITIES AND STRUCTURES AND ASSUME ALL LIABILITY FOR DAMAGE TO THEM.

PROPERTY BOUNDARIES ARE DERIVED FROM TOPOGRAPHIC PLAN OF PART OF WATER RIDGE DEVELOPMENT BEING SHOWN AS BLOCK 21 ON DRAFT M-PLAN LOCATED NORTH OF TAWADINA ROAD AND EAST OF CODD'S ROAD, GEOGRAPHIC TOWNSHIP OF GLOUCESTER, CITY OF OTTAWA, MONUMENT-URSO SURVEYING LTD. ELEVATIONS ARE GEODETIC AND REFERRED TO THE CANADIAN GEODETIC VERTICAL DATUM (CGVD28:78).

NO.	REVISION DESCRIPTION	DATE	BY
2	REVISED PER CLC COMMENTS	27/02/26	BLM
1	ISSUED FOR REVIEW	16/01/26	BLM



**Robinson**  
Land Development

2936 Baseline Road  
Suite 200  
Ottawa, ON K2H 1B3  
(613) 592-6060 rcii.com

DESIGN	BLM
CHECKED	SG
DRAWN	BLM
CHECKED	SG
APPROVED	BLM

**WATERIDGE LIFESTYLES LTD.**

**WATERIDGE VILLAGE  
BLOCK 21  
CITY OF OTTAWA, ON**

**PONDING AREA PLAN**

PROJECT No.	25117
SURVEY MONUMENT-URSO SURVEYING LTD.	
DATED	FEBRUARY 2026
DWG. No.	25117-PA1