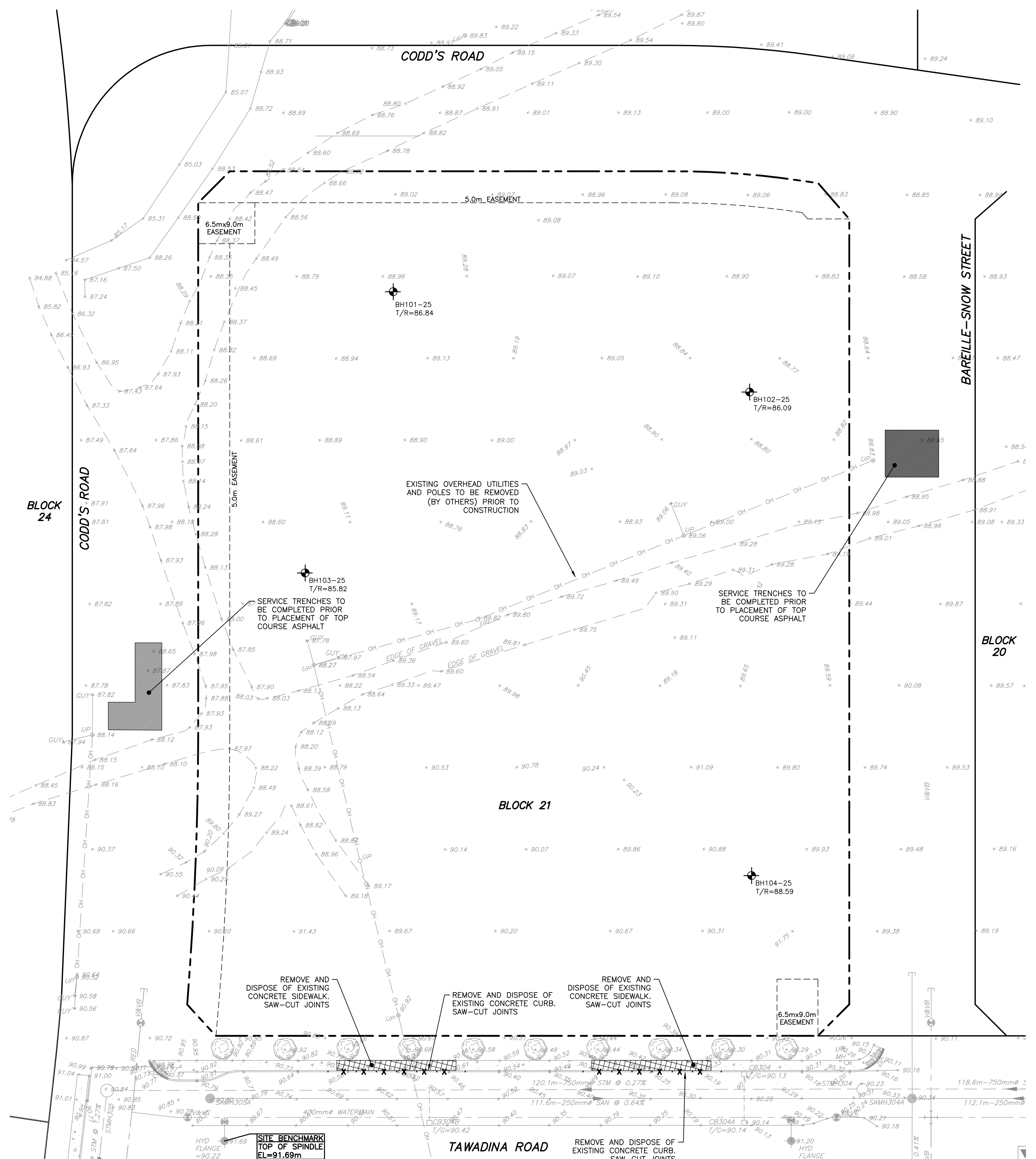


LEGEND

- PROPERTY BOUNDARY
- - - EASEMENT
- + 88.00 EXISTING ELEVATION
- EXISTING HYDRANT
- EXISTING CATCH BASIN
- EXISTING WATERMAIN
- ⊕/⊖ EXISTING VALVE & VALVE BOX
- ⊕/⊖ EXISTING VALVE & VALVE CHAMBER
- EXISTING SANITARY SEWER & MANHOLE
- EXISTING STORM SEWER & MANHOLE
- ⊕ EXISTING TREE
- EXISTING UTILITY POLE AND GUY
- OH EXISTING OVERHEAD UTILITIES
- ◆ BOREHOLE (REFER TO GEOTECHNICAL REPORT)
- ⊗ CONCRETE SIDEWALK REMOVAL
- ✖✖✖✖✖ CONCRETE CURB REMOVAL



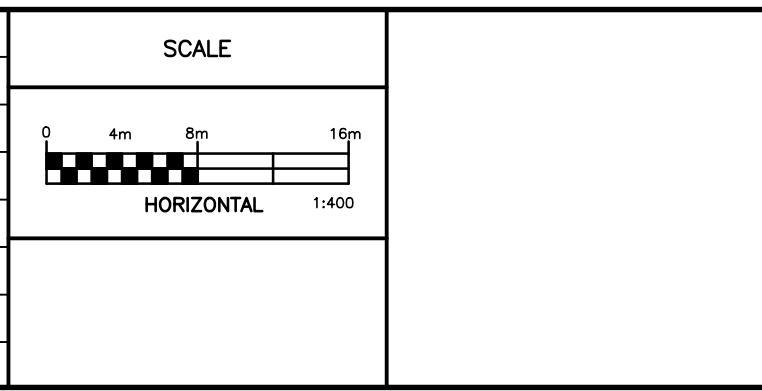
NOT FOR CONSTRUCTION

NOTES

THE POSITION OF ALL POLE LINES, CONDUITS, WATERMANS, SEWERS AND OTHER UNDERGROUND AND OVERGROUND UTILITIES AND STRUCTURES IS NOT NECESSARILY SHOWN ON THE CONTRACT DRAWINGS, AND WHERE SHOWN, THE ACCURACY OF THE POSITION OF SUCH UTILITIES AND STRUCTURES IS NOT GUARANTEED. BEFORE STARTING WORK, DETERMINE THE EXACT LOCATION OF ALL SUCH UTILITIES AND STRUCTURES AND ASSUME ALL LIABILITY FOR DAMAGE TO THEM.

PROPERTY BOUNDARIES ARE DERIVED FROM TOPOGRAPHIC PLAN OF PART OF WATER RIDGE DEVELOPMENT BEING SHOWN AS BLOCK 21 ON DRAFT M-PLAN LOCATED NORTH OF TAWADINA ROAD AND EAST OF CODD'S ROAD, GEOGRAPHIC TOWNSHIP OF GLOUCESTER, CITY OF OTTAWA, MONUMENT-URSO SURVEYING LTD. ELEVATIONS ARE GEODETIC AND REFERRED TO THE CANADIAN GEODETIC VERTICAL DATUM (CGVD28:78).

NO.	REVISION DESCRIPTION	DATE	BY
2	REVISED PER CLC COMMENTS	27/02/26	BLM
1	ISSUED FOR REVIEW	16/01/26	BLM



Robinson
Land Development

2936 Baseline Road
Suite 200
Ottawa, ON K2H 1B3
(613) 592-6060 rcii.com

DESIGN	BLM
CHECKED	SG
DRAWN	BLM
CHECKED	SG
APPROVED	BLM

WATERIDGE LIFESTYLES LTD.

**WATERIDGE VILLAGE
BLOCK 21
CITY OF OTTAWA, ON**

**EXISTING CONDITIONS
AND REMOVALS PLAN**

PROJECT No.	25117
SURVEY MONUMENT-URSO SURVEYING LTD.	
DATED	FEBRUARY 2026
DWG. No.	25117-R1