

**LOT 16 (South Argyle Avenue)  
REGISTERED PLAN 30  
CITY OF OTTAWA**

Surveyed by Annis, O'Sullivan, Vollebek Ltd.

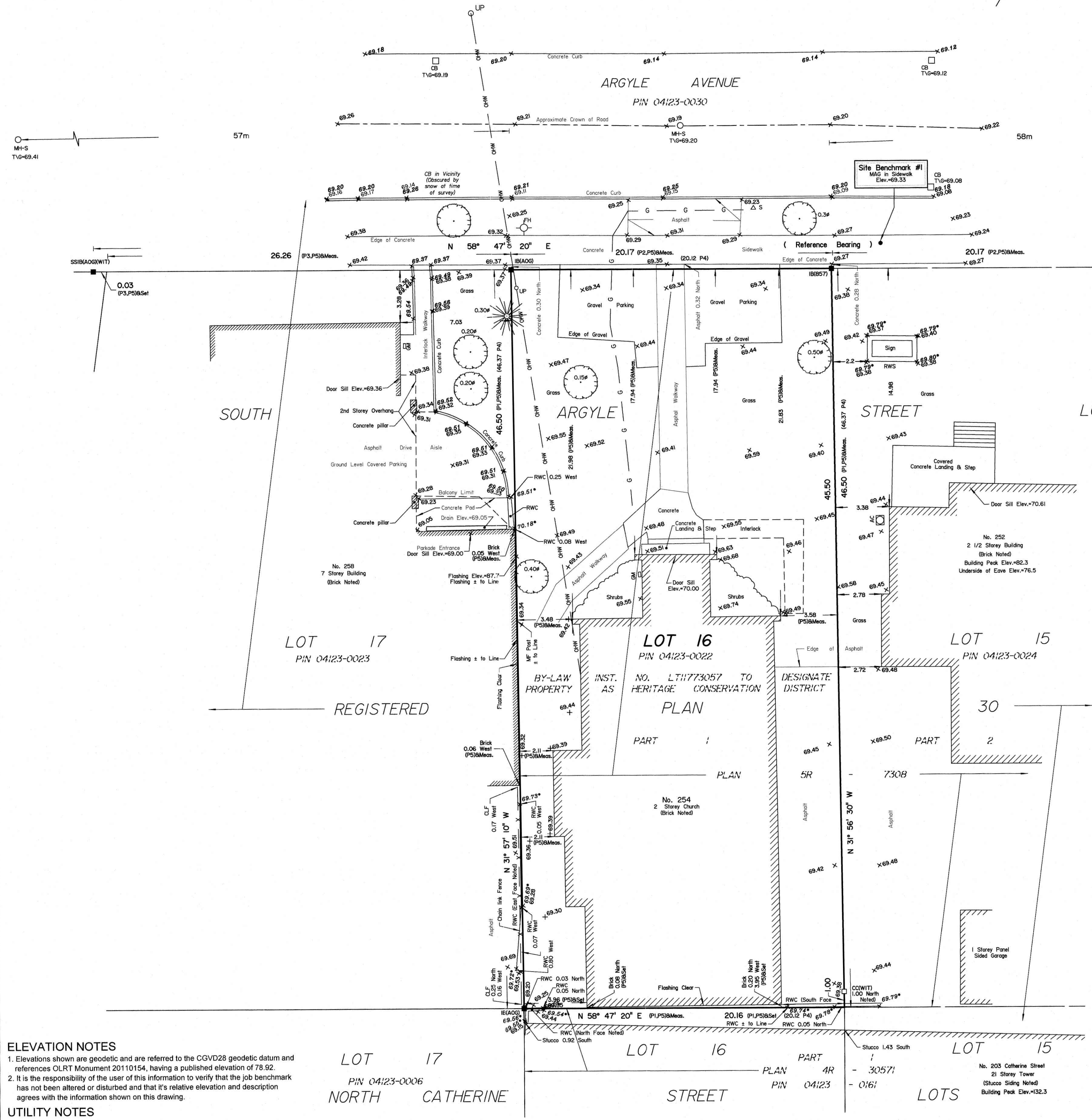
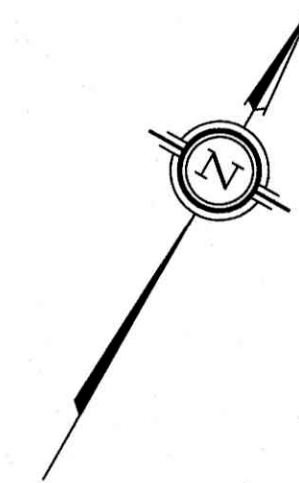
AMENDED November 15, 2024 to illustrate benchmark MAG in sidewalk.

Scale 1 : 150



Metric

DISTANCES SHOWN ON THIS PLAN ARE IN METRES AND CAN BE CONVERTED TO FEET BY DIVIDING BY 0.3048



**Legend**

⊕	Denotes Survey Monument Planted
⊖	Survey Monument Found
SIB	Standard Iron Bar
SSIB	Short Standard Iron Bar
IB	Iron Bar
CC	Cut Cross
(WIT)	Witness
(AOG)	Annis, O'Sullivan, Vollebek Ltd.
Meas.	Measured
(P1)	Plan 5R-7308
(P2)	(857) Plan dated January 5, 1990
(P3)	(AOG) Plan dated September 23, 1992
(P4)	Registered Plan 30
(P5)	(AOG) Plan dated October 7, 2016
MF	Metal Fence
CLF	Chain Link Fence
⊕	Utility Pole
⊖	Air Conditioner
⊙	Diameter
G	Underground Gas
OW	Overhead Wires
Δ S	Sign
⊙	Deciduous Tree
⊙	Coniferous Tree
GM	Gas Meter
RWC	Concrete Retaining Wall
RWS	Stone Retaining Wall
T/G	Top of Grate
MH-S	Maintenance Hole (Sanitary)
CB	Catch Basin
FH	Fire Hydrant

**Surveyor's Certificate**  
I CERTIFY THAT:  
1. This survey and plan are correct and in accordance with the Surveys Act and the Surveyors Act and the regulations made under them.  
2. The survey was completed on the 4th day of March, 2024.

March 4, 2024  
Date

*V. Andrew Shelp*  
V. Andrew Shelp  
Ontario Land Surveyor

ASSOCIATION OF ONTARIO LAND SURVEYORS  
PLAN SUBMISSION FORM  
V-69243

THIS PLAN IS NOT VALID UNLESS IT IS AN EMBOSSED ORIGINAL COPY ISSUED BY THE SURVEYOR in accordance with Regulation 1026, Section 29 (3).

**NOTES**  
Bearings are grid, derived from Can-Net 2016 Real Time Network GPS observations on the southerly boundary of Argyle Street, shown hereon, having a bearing of N58°47'20"W and are referenced to Specified Control Points 01919680005 and 01919680105, MTM Zone 9 ( 76°30' West Longitude ) NAD-83 (original).  
For bearing comparisons, a rotation of 01°15'10" counter-clockwise was applied to bearings on Plans (P1) and (P5).  
Gas Line illustrated is per AOG records, Job Reference No. 16701-16.

**ELEVATION NOTES**  
1. Elevations shown are geodetic and are referred to the CGVD28 geodetic datum and references OLRT Monument 20110154, having a published elevation of 78.92.  
2. It is the responsibility of the user of this information to verify that the job benchmark has not been altered or disturbed and that its relative elevation and description agrees with the information shown on this drawing.

**UTILITY NOTES**  
1. This drawing cannot be accepted as acknowledging all of the utilities and it will be the responsibility of the user to contact the respective utility authorities for confirmation.  
2. Only visible surface utilities were located.  
3. A field location of underground plant by the pertinent utility authority is mandatory before any work involving breaking ground, probing, excavating etc.

Topographic data was collected under Winter Conditions. Snow cover and ice preclude determining location and elevation of some topographical data that is otherwise visible.

© Annis, O'Sullivan, Vollebek Ltd. 2024. "THIS PLAN IS PROTECTED BY COPYRIGHT"  
**ANNIS, O'SULLIVAN, VOLLEBEK LTD.**  
14 Concourse Gate, Suite 500  
Nepean, Ont. K2E 7S6  
Phone: (613) 727-0850 / Fax: (613) 727-1079  
Email: Nepean@aovltd.com