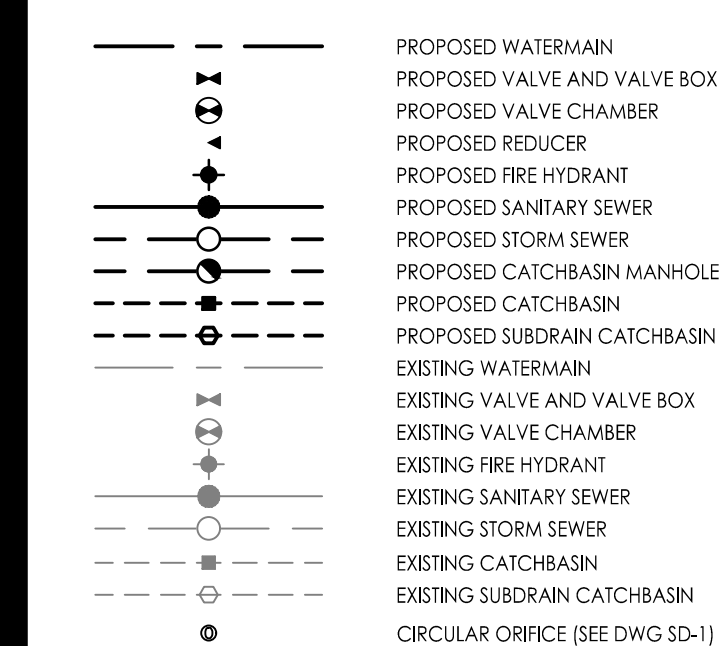




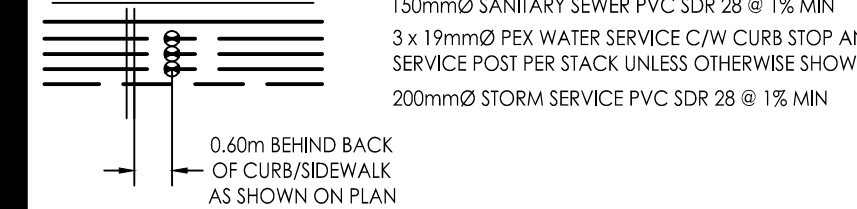
Copyright Reserved

The Contractor shall verify and be responsible for all dimensions. DO NOT locate the drawing - any errors or omissions shall be reported to Stantec without delay.  
The Copyrights to all designs and drawings are the property of Stantec. Reproduction or use for any purpose other than that authorized by Stantec is forbidden.

Legend



BUILDING SERVICES



Notes

- EXISTING SERVICING AND UTILITY INFORMATION SHOWN IS APPROXIMATE. SEE CONDITION, LOCATION, AND ELEVATION OF EXISTING SERVICES AND UTILITIES TO BE CONFIRMED BY THE CONTRACTOR PRIOR TO CONSTRUCTION AND ANY CONFLICTS WITH EXISTING SERVICING MUST BE REPORTED TO THE ENGINEER PRIOR TO CONTINUING WITH CONSTRUCTION. INFORMATION SHOWN HAS BEEN OBTAINED FROM RAINROCK CRESCENT PLAN AND PROFILE SHEET 32 OF TRAILS EDGE WEST SUBDIVISION DATED JANUARY 15, 2015.

| 150mm $\varnothing$ WATERMAIN A |                |            |   |
|---------------------------------|----------------|------------|---|
| STATION                         | FINISHED GRADE | TOP OF WJM | ITEM  |
| 0+00                            | 87.67          | 85.27      | CONNECTION TO EX. 200mm $\varnothing$ WATERMAIN |
| 0+04.2                          | 87.64          | 85.24      | 200mm $\varnothing$ D.M.A. CHAMBER              |
| 0+05                            | 87.76          | 85.36      | TOP OF WATERMAIN                                |
| 0+08                            | 87.66          | 85.26      | TOP OF WATERMAIN                                |
| 0+04.2                          | 87.66          | 85.26      | 200mm $\varnothing$ x 200mm $\varnothing$ TEE   |
| 0+04.6                          | 87.68          | 85.28      | 200mm $\varnothing$ VALVE AND BOX               |
| 0+06                            | 87.79          | 85.39      | TOP OF WATERMAIN                                |
| 0+01.6                          | 87.00          | 84.60      | 45 $^{\circ}$ HORIZONTAL BEND                   |
| 0+07.0                          | 87.82          | 85.42      | 45 $^{\circ}$ HORIZONTAL BEND                   |
| 0+07.3                          | 87.79          | 85.39      | 150mm $\varnothing$ FIRE HYDRANT TEE            |
| 0+00                            | 87.77          | 85.37      | TOP OF WATERMAIN                                |
| 0+10                            | 87.79          | 85.39      | TOP OF WATERMAIN                                |
| 0+10.3                          | 87.89          | 85.49      | 150mm $\varnothing$ FIRE HYDRANT TEE            |
| 0+11.3                          | 87.89          | 85.49      | 200mm $\varnothing$ VALVE AND BOX               |
| 0+11.3                          | 87.87          | 85.47      | 22.5 $^{\circ}$ HORIZONTAL BEND                 |
| 0+12.0                          | 87.76          | 85.36      | 200mm $\varnothing$ x 200mm $\varnothing$ TEE   |

| 150mm $\varnothing$ WATERMAIN B |                |            |  |
|---------------------------------|----------------|------------|--|
| STATION                         | FINISHED GRADE | TOP OF WJM | ITEM   |
| 0+00                            | 87.66          | 85.26      | 200mm $\varnothing$ x 200mm $\varnothing$ TEE    |
| 0+04.8                          | 87.75          | 85.35      | 45 $^{\circ}$ VERTICAL BEND                      |
| 0+05                            | 87.82          | 85.42      | TOP OF WATERMAIN                                 |
| 0+05.4                          | 87.76          | 85.36      | 200mm $\varnothing$ VALVE AND BOX                |
| 0+08.5                          | 87.79          | 85.39      | 200mm $\varnothing$ x 200mm $\varnothing$ TEE    |
| 0+06                            | 87.81          | 85.41      | TOP OF WATERMAIN                                 |
| 0+06.7                          | 87.80          | 85.40      | 200mm $\varnothing$ VALVE AND BOX                |
| 0+02.1                          | 87.74          | 85.34      | 22.5 $^{\circ}$ HORIZONTAL BEND                  |
| 0+06                            | 87.59          | 85.19      | TOP OF WATERMAIN                                 |
| 0+06.5                          | 87.68          | 85.28      | 200mm $\varnothing$ VALVE AND BOX                |
| 0+07.9                          | 87.76          | 85.36      | 200mm $\varnothing$ x 200mm $\varnothing$ TEE    |
| 0+08                            | 87.95          | 85.55      | TOP OF WATERMAIN                                 |
| 0+08.1                          | 87.96          | 85.56      | 200mm $\varnothing$ x 50mm $\varnothing$ REDUCER |
| 0+08.8                          | 88.01          | 85.61      | 5 $^{\circ}$ HORIZONTAL BEND                     |
| 0+10                            | 88.13          | 85.73      | TOP OF WATERMAIN                                 |
| 0+10.9                          | 88.10          | 85.70      | 50mm $\varnothing$ STUB                          |

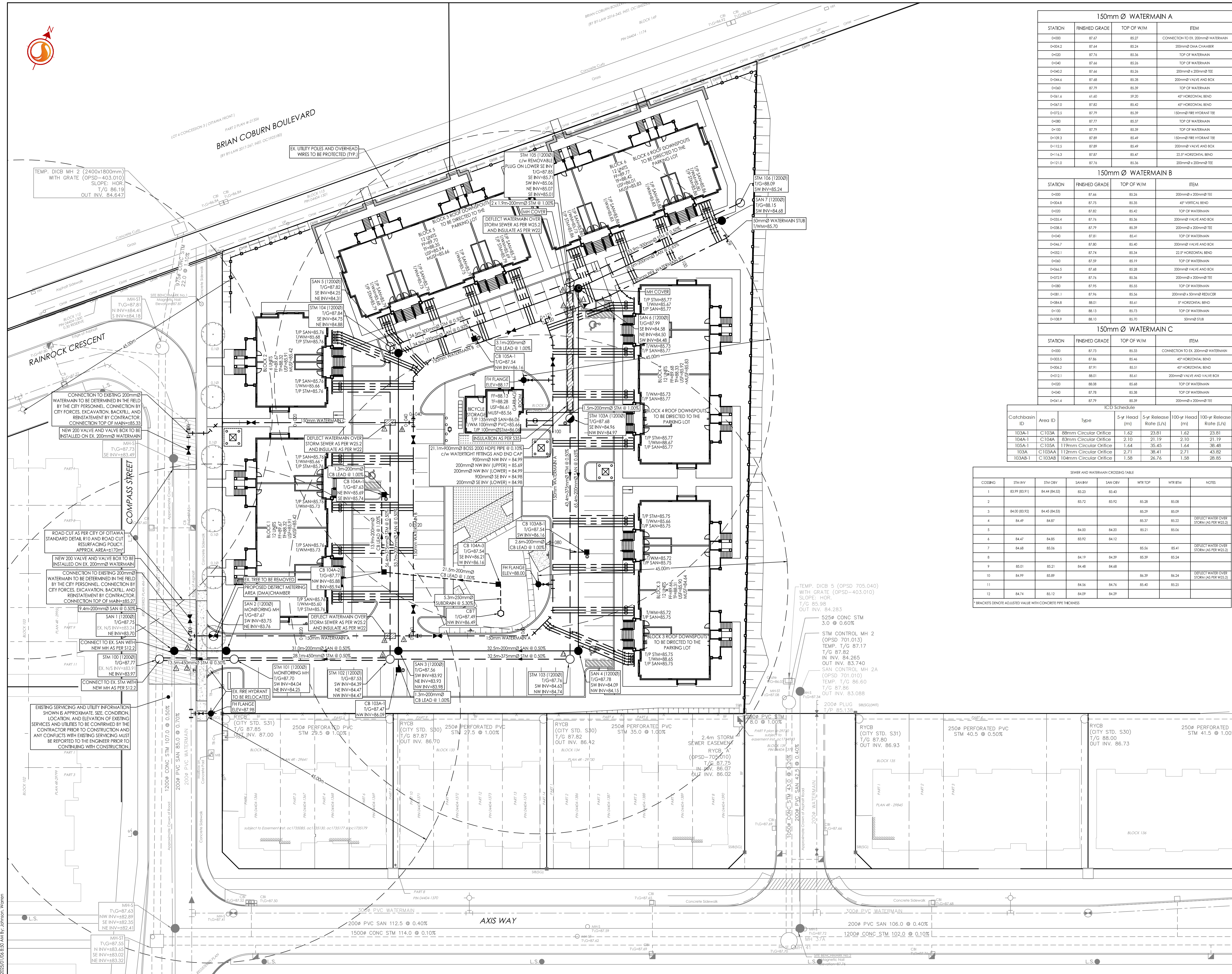
  

| 150mm $\varnothing$ WATERMAIN C |                |            |   |
|---------------------------------|----------------|------------|---|
| STATION                         | FINISHED GRADE | TOP OF WJM | ITEM  |
| 0+00                            | 87.73          | 85.33      | CONNECTION TO EX. 200mm $\varnothing$ WATERMAIN |
| 0+03.5                          | 87.86          | 85.46      | 45 $^{\circ}$ HORIZONTAL BEND                   |
| 0+06.2                          | 87.91          | 85.51      | 45 $^{\circ}$ HORIZONTAL BEND                   |
| 0+10.1                          | 88.01          | 85.61      | 200mm $\varnothing$ VALVE AND VALVE BOX         |
| 0+02                            | 88.08          | 85.68      | TOP OF WATERMAIN                                |
| 0+06                            | 87.78          | 85.38      | TOP OF WATERMAIN                                |
| 0+04.4                          | 87.79          | 85.39      | 200mm $\varnothing$ x 200mm $\varnothing$ TEE   |

| Catchbasin ID | Area ID | Type                   | ICD Schedule  |                         |                 |                           |
|---------------|---------|------------------------|---------------|-------------------------|-----------------|---------------------------|
|               |         |                        | 5-yr Head (m) | 5-yr Release Rate (L/s) | 100-yr Head (m) | 100-yr Release Rate (L/s) |
| 103A-1        | C103A   | 89mm Circular Orifice  | 1.62          | 23.81                   | 1.62            | 23.81                     |
| 103A-1        | C104A   | 83mm Circular Orifice  | 2.10          | 21.19                   | 2.10            | 21.19                     |
| 103A-1        | C105A   | 119mm Circular Orifice | 1.64          | 35.45                   | 1.64            | 38.46                     |
| 103A          | C103AA  | 119mm Circular Orifice | 2.71          | 38.41                   | 2.71            | 43.82                     |
| 103AB-1       | C103AB  | 104mm Circular Orifice | 1.58          | 26.76                   | 1.58            | 28.85                     |

| CROSSING | SEWER AND WATERMAIN CROSSING TABLE |               |         |         |         |         | NOTES                                   |
|----------|------------------------------------|---------------|---------|---------|---------|---------|---|
|          | STM INV                            | STM OBV       | SAN INV | SAN OBV | WTR TOP | WTR Btm |   |
| 1        | 83.99 (83.91)                      | 84.44 (84.52) | 83.23   | 83.40   | 85.28   | 85.08   |   |
| 2        |                                    |               | 83.72   | 83.92   |         |         |   |
| 3        | 84.00 (83.92)                      | 84.45 (84.53) |         |         | 85.29   | 85.09   |   |
| 4        | 84.49                              | 84.87         |         |         | 85.37   | 85.22   | DEFLECT WATER OVER STORM (AS PER W23.2) |
| 5        |                                    |               | 84.00   | 84.20   | 85.21   | 85.06   |   |
| 6        | 84.47                              | 84.85         | 83.92   | 84.12   |         |         |   |
| 7        | 84.68                              | 85.06         |         |         | 85.56   | 85.41   | DEFLECT WATER OVER STORM (AS PER W23.2) |
| 8        |                                    |               | 84.19   | 84.39   | 85.29   | 85.24   |   |
| 9        | 85.01                              | 85.31         | 84.48   | 84.68   |         |         |   |
| 10       | 84.99                              | 85.89         |         |         | 86.39   | 86.24   | DEFLECT WATER OVER STORM (AS PER W23.2) |
| 11       |                                    |               | 84.56   | 84.76   | 85.40   | 85.25   |   |
| 12       | 84.74                              | 85.12         | 84.09   | 84.29   |         |         |   |

\*BRACKETS DENOTE ADJUSTED VALUE WITH CONCRETE PIPE THICKNESS



| Revision | By  | Appd. | YY.MM.DD |
|----------|-----|-------|----------|
| 2        | WAJ | SGG   | 25.01.06 |
| 1        | WAJ | SGG   | 24.11.04 |

| File Name:      | WAJ  | SGG   | WAJ  | 24.09.03 |
|-----------------|------|-------|------|----------|
| 16401759-D8.dwg | Dwn. | Chkd. | Dgn. | YY.MM.DD |

| Permit/Seal | WAJ  | SGG   | WAJ  | 24.09.03 |
|-------------|------|-------|------|----------|
|             | Dwn. | Chkd. | Dgn. | YY.MM.DD |

Client/Project  
RICH CRAFT HOMES LTD.

640 COMPASS STREET  
BLOCK 140  
OTTAWA, ON

Title  
SITE SERVICING PLAN

| Project No. | Scale | Sheet | Revision |
|-------------|-------|-------|----------|
| 16401759    | 1:300 |       |          |
| Drawing No. |       |       |          |