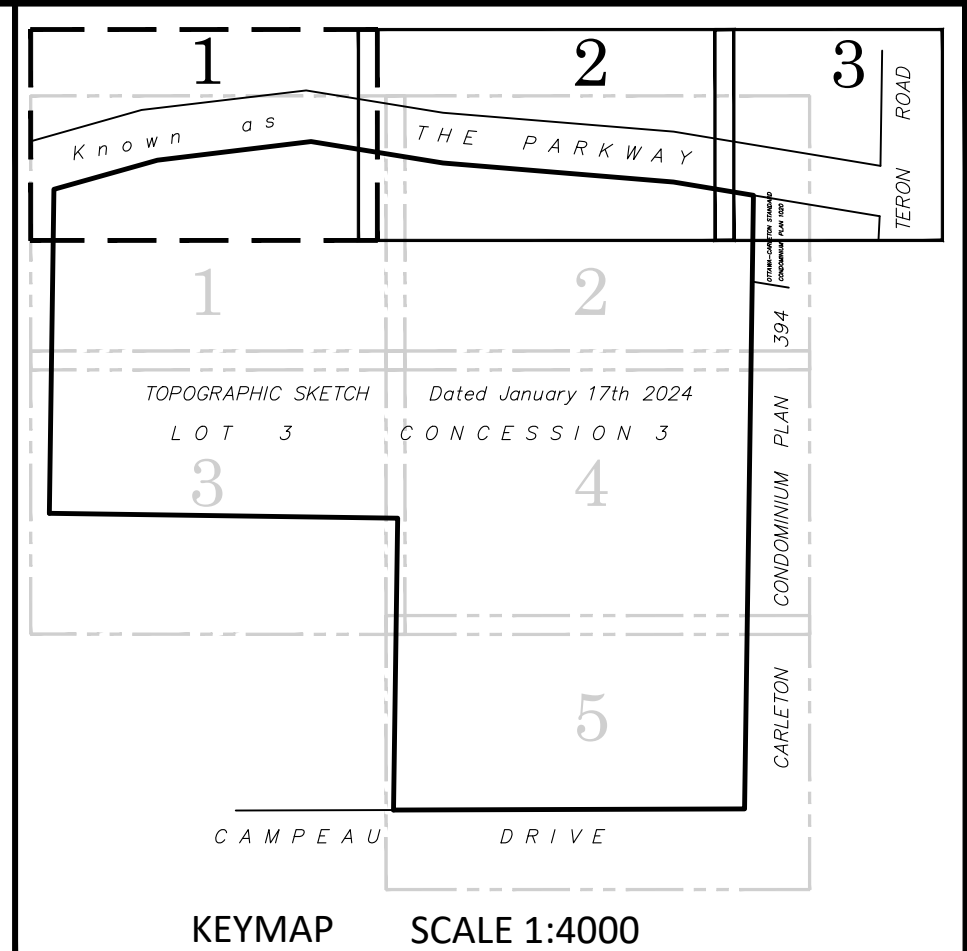
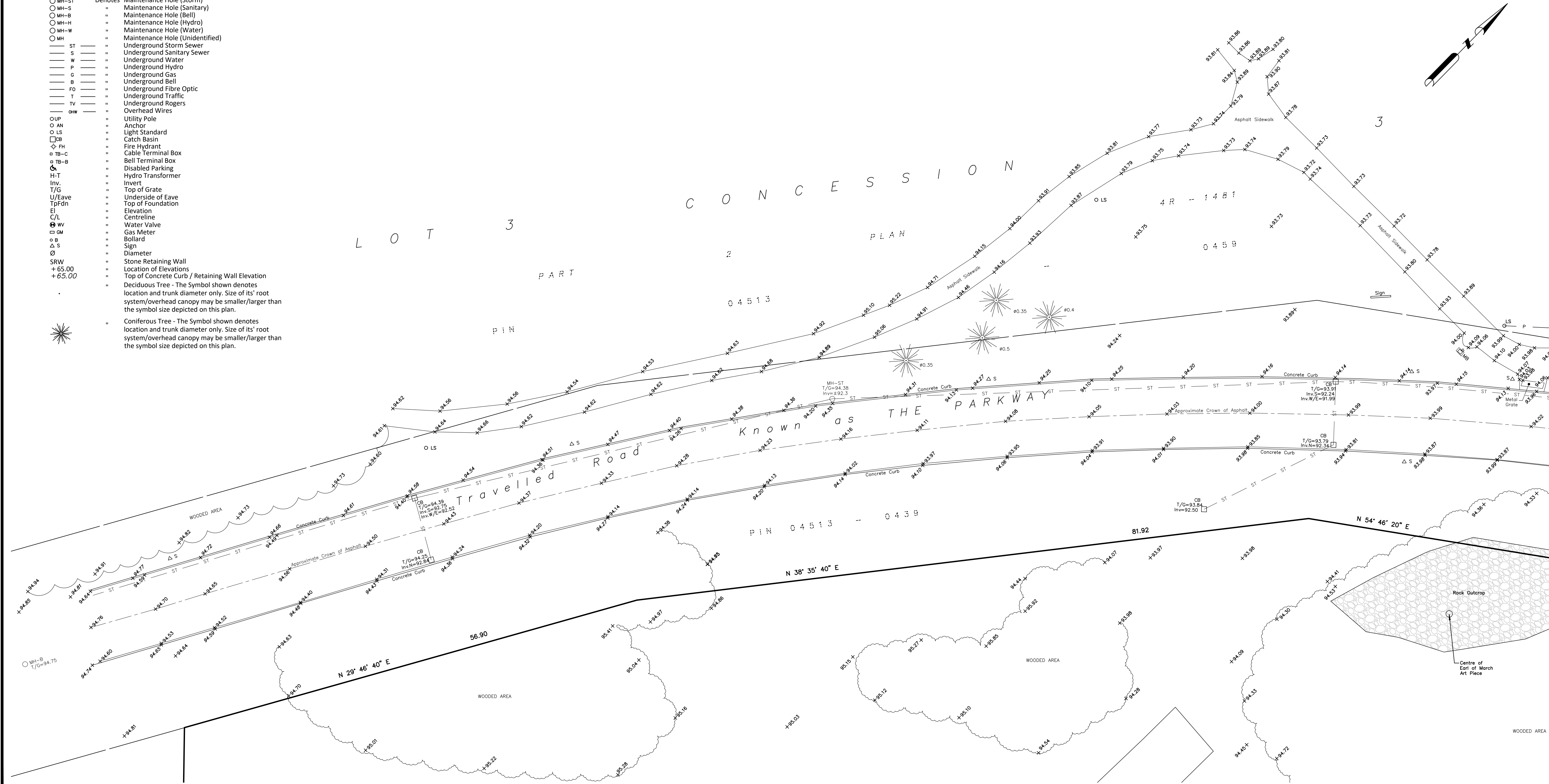


**Notes & Legend**

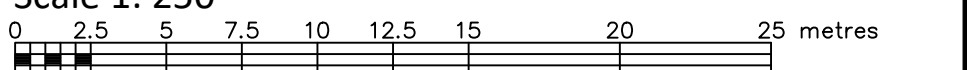
- MH-ST " Denotes Maintenance Hole (Storm)
- MH-S " " Maintenance Hole (Sanitary)
- MH-B " " Maintenance Hole (Bell)
- MH-H " " Maintenance Hole (Hydro)
- MH-W " " Maintenance Hole (Water)
- MH " " Maintenance Hole (Unidentified)
- ST " " Underground Storm Sewer
- S " " Underground Sanitary Sewer
- W " " Underground Water
- P " " Underground Hydro
- G " " Underground Gas
- B " " Underground Bell
- FO " " Underground Fibre Optic
- T " " Underground Traffic
- TV " " Underground Rogers
- OW " " Overhead Wires
- UP " " Utility Pole
- AN " " Anchor
- LS " " Light Standard
- CB " " Catch Basin
- FH " " Fire Hydrant
- TB-C " " Cable Terminal Box
- TB-B " " Bell Terminal Box
- D " " Disabled Parking
- H-T " " Hydro Transformer
- Inv. " " Invert
- T/G " " Top of Grate
- U/Eave " " Underside of Eave
- TpFdn " " Top of Foundation
- El " " Elevation
- C/L " " Centreline
- WV " " Water Valve
- GM " " Gas Meter
- B " " Bollard
- △ S " " Sign
- " " Diameter
- SRW " " Stone Retaining Wall
- +65.00 " " Location of Elevations
- +65.00 " " Top of Concrete Curb / Retaining Wall Elevation
- " " Deciduous Tree - The Symbol shown denotes location and trunk diameter only. Size of its' root system/overhead canopy may be smaller/larger than the symbol size depicted on this plan.
- " " Coniferous Tree - The Symbol shown denotes location and trunk diameter only. Size of its' root system/overhead canopy may be smaller/larger than the symbol size depicted on this plan.



TOPOGRAPHIC SKETCH OF SHEET 1 OF 3

**PART OF LOT 3  
CONCESSION 3  
GEOGRAPHIC TOWNSHIP OF MARCH  
CITY OF OTTAWA**

FARLEY, SMITH & DENIS SURVEYING LTD. 2024  
Scale 1: 250



**Metric Note**  
Distances and/or coordinates on this plan are in metres and can be converted to feet by dividing by 0.3048.

**Boundary Note**  
This Sketch is to be read in conjunction with a Plan of Survey dated January 17, 2024 (FSD Ref. 464-23)

**Elevation Notes**  
1. Elevations shown are geodetic and are referred to Geodetic Datum CGVD-1928 :1978. (Monument No. 19770765)  
2. It is the responsibility of the user of this information to verify that the job benchmark has not been altered or disturbed and that its' relative elevation and description agrees with the information shown on this drawing.

**Utility Notes**  
1. This drawing cannot be accepted as acknowledging all of the utilities and it will be the responsibility of the user to contact the respective utility authorities for confirmation.  
2. Only visible surface utilities were located.  
3. Underground storm sewer data and inverts derived from City of Ottawa utility sheet reference: 13004p1, 13004p2, 13004p3 & 13762.  
4. A field location of underground plant by the pertinent utility authority is mandatory before any work involving breaking ground, probing, excavating etc.

**Caution Note**  
a) This is NOT a Plan of Survey and shall not be used except for the purpose indicated in the title block.  
b) This Sketch is protected by Copyright ©.

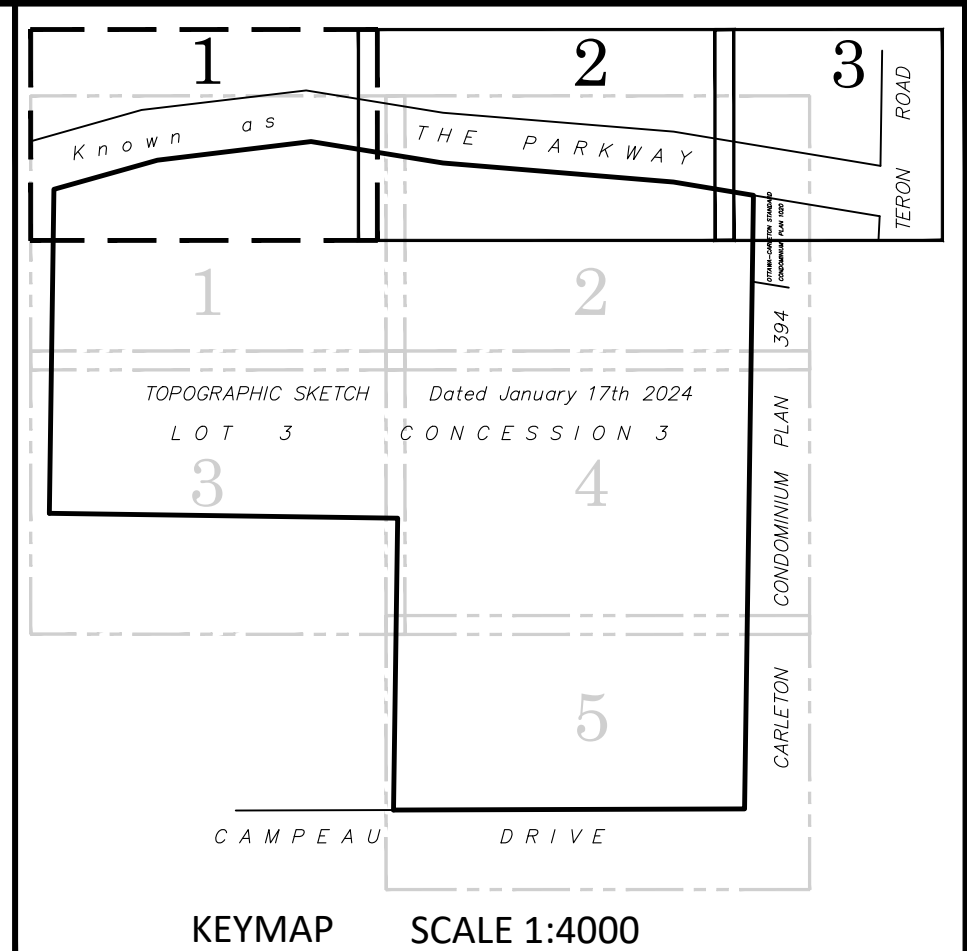
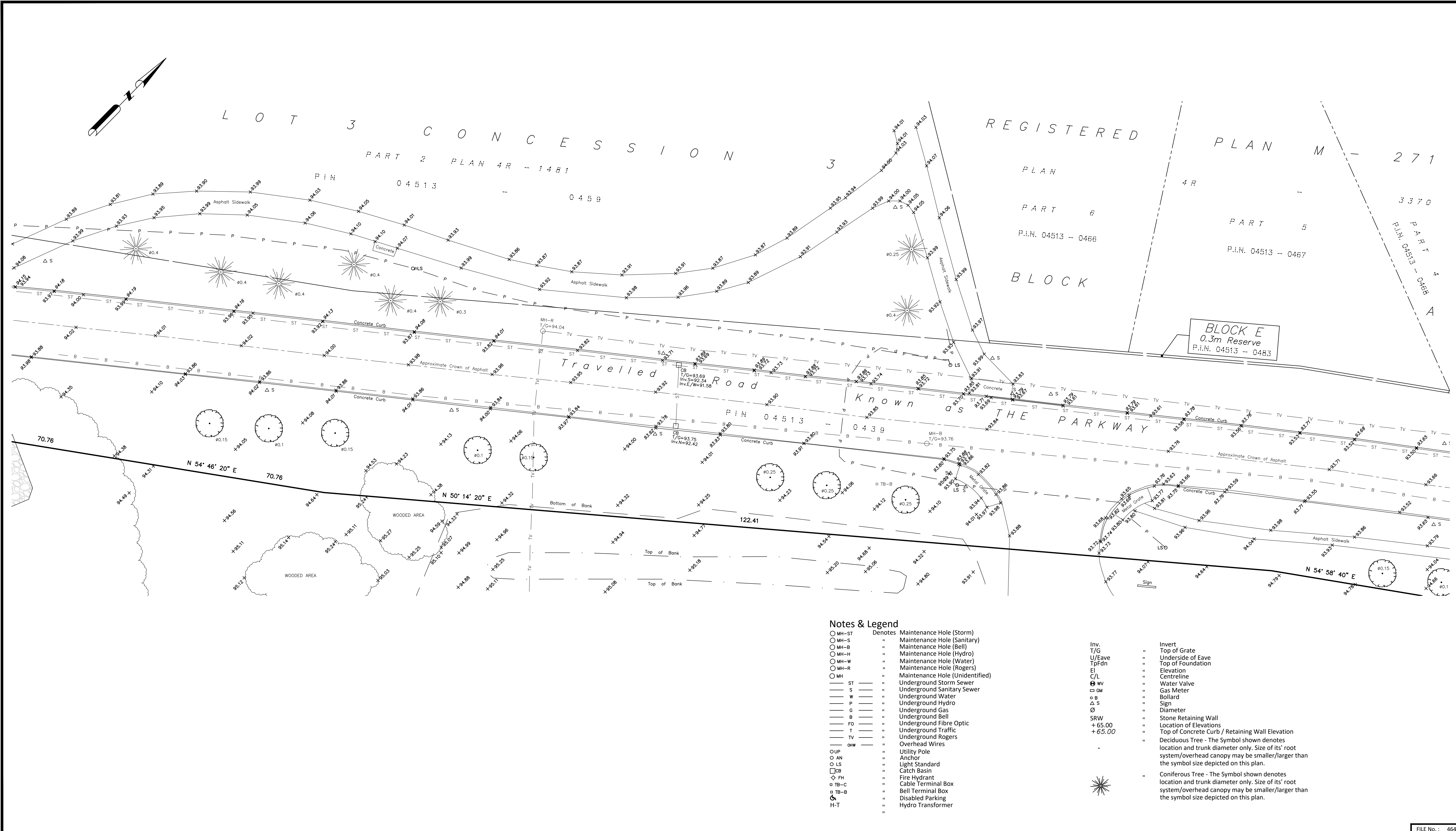
WARNING NO PERSON MAY COPY, REPRODUCE, DISTRIBUTE OR ALTER THIS PLAN IN WHOLE OR IN PART WITHOUT THE WRITTEN PERMISSION OF FARLEY, SMITH & DENIS SURVEYING LTD. © FARLEY, SMITH & DENIS SURVEYING LTD., 2024.

Fieldwork was completed on the 12th day of June, 2024.  
Date: June 18, 2024  
Daniel Robinson  
Ontario Land Surveyor

**FARLEY, SMITH & DENIS SURVEYING LTD.**

ONTARIO LAND SURVEYORS  
CANADA LAND SURVEYORS  
Unit 275, 30 COLONNADE ROAD, OTTAWA, ONTARIO K2E 7J6  
TEL. (613) 727-8226 E-mail: fdsurveys@bellnet.ca

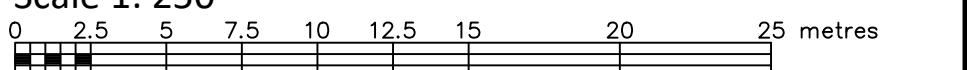
FILE No.: 464-23



TOPOGRAPHIC SKETCH OF SHEET 1 OF 3

**PART OF LOT 3  
CONCESSION 3  
GEOGRAPHIC TOWNSHIP OF MARCH  
CITY OF OTTAWA**

**FARLEY, SMITH & DENIS SURVEYING LTD. 2024**  
Scale 1: 250



**Metric Note**  
Distances and/or coordinates on this plan are in metres and can be converted to feet by dividing by 0.3048.

**Boundary Note**  
This Sketch is to be read in conjunction with a Plan of Survey dated January 17, 2024 (FSD Ref. 464-23)

**Elevation Notes**  
1. Elevations shown are geodetic and are referred to Geodetic Datum CGVD-1928 -1978. (Monument No. 19770765)  
2. It is the responsibility of the user of this information to verify that the job benchmark has not been altered or disturbed and that its relative elevation and description agrees with the information shown on this drawing.

**Utility Notes**  
1. This drawing cannot be accepted as acknowledging all of the utilities and it will be the responsibility of the user to contact the respective utility authorities for confirmation.  
2. Only visible surface utilities were located.  
3. Underground storm sewer data and inverts derived from City of Ottawa utility sheet reference: 13004p1, 13004p2, 13004p3 & 13762.  
4. A field location of underground plant by the pertinent utility authority is mandatory before any work involving breaking ground, probing, excavating etc.

**Caution Note**  
a) This is NOT a Plan of Survey and shall not be used except for the purpose indicated in the title block.  
b) This Sketch is protected by Copyright ©.

**Notes & Legend**

○ MH-ST	Denotes Maintenance Hole (Storm)	Inv.	Invert
○ MH-S	" Maintenance Hole (Sanitary)	T/G	" Top of Grate
○ MH-B	" Maintenance Hole (Bell)	U/Eave	" Underside of Eave
○ MH-H	" Maintenance Hole (Hydro)	TpFdn	" Top of Foundation
○ MH-W	" Maintenance Hole (Water)	El	" Elevation
○ MH-R	" Maintenance Hole (Rogers)	C/L	" Centreline
○ MH	" Maintenance Hole (Unidentified)	WV	" Water Valve
— ST	" Underground Storm Sewer	GM	" Gas Meter
— S	" Underground Sanitary Sewer	B	" Bollard
— W	" Underground Water	Δ S	" Sign
— P	" Underground Hydro	Ø	" Diameter
— G	" Underground Gas	SRW	" Stone Retaining Wall
— B	" Underground Bell	+65.00	" Location of Elevations
— FO	" Underground Fibre Optic	+65.00	" Top of Concrete Curb / Retaining Wall Elevation
— T	" Underground Traffic		" Deciduous Tree - The Symbol shown denotes location and trunk diameter only. Size of its' root system/overhead canopy may be smaller/larger than the symbol size depicted on this plan.
— TV	" Underground Rogers		" Coniferous Tree - The Symbol shown denotes location and trunk diameter only. Size of its' root system/overhead canopy may be smaller/larger than the symbol size depicted on this plan.
— OHW	" Overhead Wires		
○ UP	" Utility Pole		
○ AN	" Anchor		
○ LS	" Light Standard		
□ CB	" Catch Basin		
◇ FH	" Fire Hydrant		
□ TB-C	" Cable Terminal Box		
□ TB-B	" Bell Terminal Box		
♿	" Disabled Parking		
H-T	" Hydro Transformer		

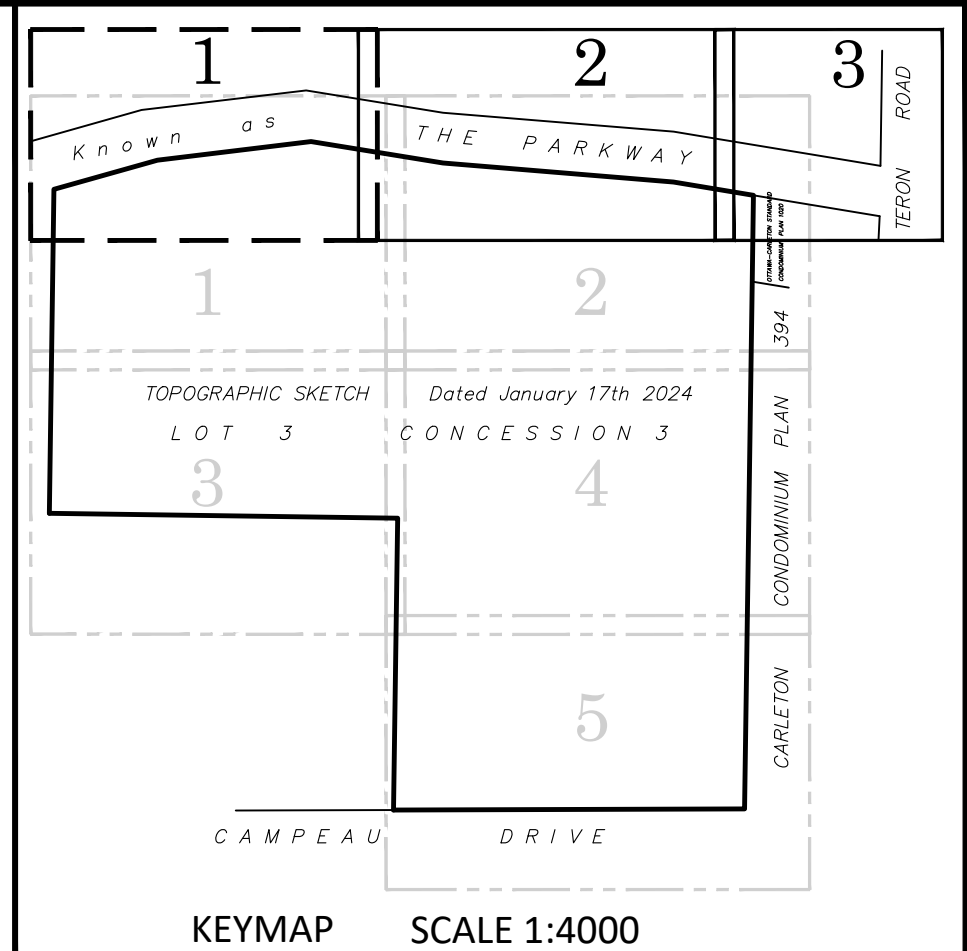
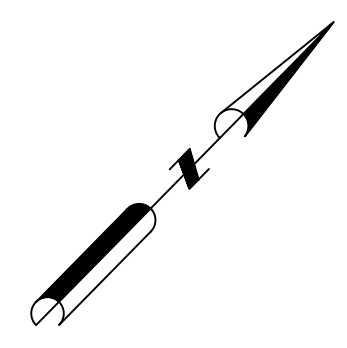
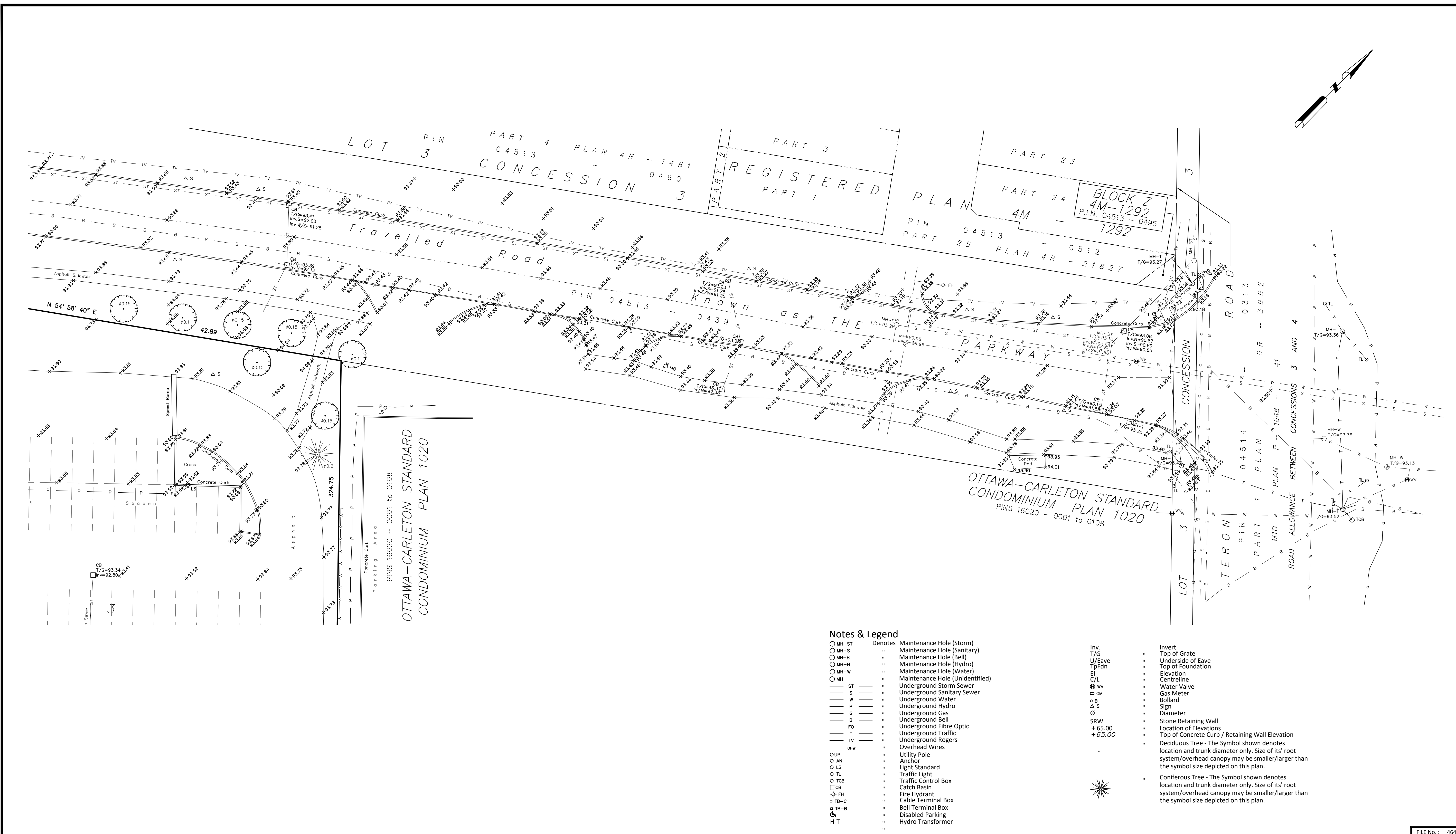
**WARNING** NO PERSON MAY COPY, REPRODUCE, DISTRIBUTE OR ALTER THIS PLAN IN WHOLE OR IN PART WITHOUT THE WRITTEN PERMISSION OF FARLEY, SMITH & DENIS SURVEYING LTD., 2024.

Fieldwork was completed on the 12th day of June, 2024.  
June 18, 2024 Date  
Daniel Robinson  
Ontario Land Surveyor

**FARLEY, SMITH & DENIS SURVEYING LTD.**

ONTARIO LAND SURVEYORS  
CANADA LAND SURVEYORS  
Unit 275, 30 COLONNADE ROAD, OTTAWA, ONTARIO K2E 7J6  
TEL. (613) 727-8226 E-mail: fdsurvey@bellnet.ca

FILE No.: 464-23



TOPOGRAPHIC SKETCH OF SHEET 1 OF 3

**PART OF LOT 3  
CONCESSION 3  
GEOGRAPHIC TOWNSHIP OF MARCH  
CITY OF OTTAWA**

FARLEY, SMITH & DENIS SURVEYING LTD. 2024

Scale 1: 250  
0 2.5 5 7.5 10 12.5 15 20 25 metres

**Metric Note**  
Distances and/or coordinates on this plan are in metres and can be converted to feet by dividing by 0.3048.

**Boundary Note**  
This Sketch is to be read in conjunction with a Plan of Survey dated January 17, 2024 (FSD Ref. 464-23)

**Elevation Notes**  
1. Elevations shown are geodetic and are referred to Geodetic Datum CGVD-1928 :1978. (Monument No. 19770765)  
2. It is the responsibility of the user of this information to verify that the job benchmark has not been altered or disturbed and that its relative elevation and description agrees with the information shown on this drawing.

**Utility Notes**  
1. This drawing cannot be accepted as acknowledging all of the utilities and it will be the responsibility of the user to contact the respective utility authorities for confirmation.  
2. Only visible surface utilities were located.  
3. Underground storm sewer data and inverts derived from City of Ottawa utility sheet reference: 13004p1, 13004p2, 13004p3 & 13762.  
4. A field location of underground plant by the pertinent utility authority is mandatory before any work involving breaking ground, probing, excavating etc.

**Caution Note**  
a) This is NOT a Plan of Survey and shall not be used except for the purpose indicated in the title block.  
b) This Sketch is protected by Copyright ©.

**Notes & Legend**

○ MH-ST	Denotes Maintenance Hole (Storm)	Inv.	Invert
○ MH-S	" Maintenance Hole (Sanitary)	T/G	" Top of Grate
○ MH-B	" Maintenance Hole (Bell)	U/Eave	" Underside of Eave
○ MH-H	" Maintenance Hole (Hydro)	TpFdn	" Top of Foundation
○ MH-W	" Maintenance Hole (Water)	El	" Elevation
○ MH	" Maintenance Hole (Unidentified)	C/L	" Centreline
— ST	" Underground Storm Sewer	W	" Water Valve
— S	" Underground Sanitary Sewer	GM	" Gas Meter
— W	" Underground Water	o B	" Bollard
— P	" Underground Hydro	Δ S	" Sign
— G	" Underground Gas	Ø	" Diameter
— B	" Underground Bell	SRW	" Stone Retaining Wall
— F	" Underground Fibre Optic	+65.00	" Location of Elevations
— T	" Underground Traffic	+65.00	" Top of Concrete Curb / Retaining Wall Elevation
— TV	" Underground Rogers		" Deciduous Tree - The Symbol shown denotes location and trunk diameter only. Size of its' root system/overhead canopy may be smaller/larger than the symbol size depicted on this plan.
— OHW	" Overhead Wires		" Coniferous Tree - The Symbol shown denotes location and trunk diameter only. Size of its' root system/overhead canopy may be smaller/larger than the symbol size depicted on this plan.
○ UP	" Utility Pole		
○ AN	" Anchor		
○ LS	" Light Standard		
○ TL	" Traffic Light		
○ TCB	" Traffic Control Box		
□ CB	" Catch Basin		
◇ FH	" Fire Hydrant		
○ TB-C	" Cable Terminal Box		
○ TB-B	" Bell Terminal Box		
○ H-T	" Hydro Transformer		

WARNING NO PERSON MAY COPY, REPRODUCE, DISTRIBUTE OR ALTER THIS PLAN IN WHOLE OR IN PART WITHOUT THE WRITTEN PERMISSION OF FARLEY, SMITH & DENIS SURVEYING LTD. © FARLEY, SMITH & DENIS SURVEYING LTD., 2024.

Fieldwork was completed on the 12th day of June, 2024.  
June 18, 2024  
Date  
Daniel Robinson  
Ontario Land Surveyor

**FARLEY, SMITH & DENIS SURVEYING LTD.**

ONTARIO LAND SURVEYORS  
CANADA LAND SURVEYORS  
Unit 275, 30 COLONNADE ROAD, OTTAWA, ONTARIO K2E 7J6  
TEL. (613) 727-8226 E-mail: fdsurveys@bellnet.ca

FILE No.: 464-23