

CANOPY COVER CHART:

PROPOSED & RETAINED CANOPY COVERAGE AT MATURITY				
SIZE OF PROPOSED TREE	AVERAGE MATURE SPREAD	CANOPY COVERAGE PER TREE AT MATURITY (m <sup>2</sup> )	QUANTITY OF TREES	TOTAL CANOPY COVERAGE
Deciduous - Small	4.5m	16	5	80
Deciduous - Medium	10m	79	22	1738
<b>TOTAL PROPOSED CANOPY COVERAGE (m<sup>2</sup>):</b>				<b>1,818</b>
<b>TOTAL SITE AREA FOR 295 &amp; 355 DESCHÂTELETS (m<sup>2</sup>):</b>				<b>4,832</b>
<b>EST. PROPOSED CANOPY COVERAGE (%):</b>				<b>38%</b>

- Area of a circle =  $(r \times r) \times \pi$
- Canopy coverage per tree calculation:  $(\text{average mature spread}/2) \times (\text{average mature spread}/2) \times \pi$

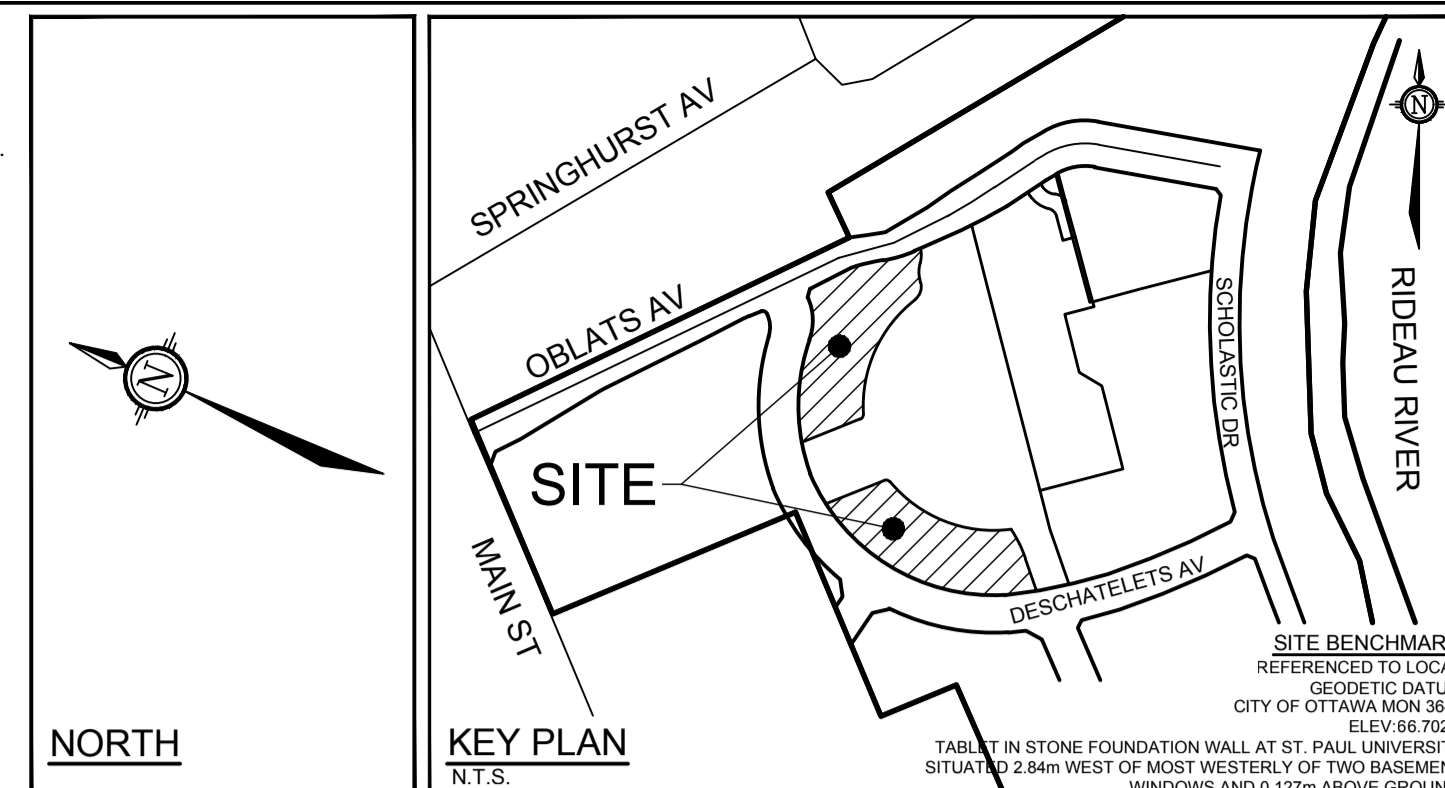
**SOURCE REFERENCE:**  
 TOPOGRAPHIC PLAN OF SURVEY OF PART OF LOT "H" CONCESSION "D" (RIDEAU FRONT), PREPARED BY ANNIS, O-SULLIVAN, VOLLEBEKK LTD. ON DECEMBER 15, 2017.  
**TOPOGRAPHIC INFORMATION:**  
 HORIZONTAL DATUM: NAD 83 (ORIGINAL), MTM - ZONE 9  
 VERTICAL DATUM: CGVD28-79  
 1. ANNIS, O-SULLIVAN, VOLLEBEKK LTD.'S TOPOGRAPHIC PLAN OF SURVEY  
 2. NOVATECH TOPOGRAPHIC SURVEY, APRIL 2024

TREE PLANTING IN SENSITIVE CLAY

- The landscape plans have been developed in accordance with the Geotechnical Investigation Report PG6948-1 prepared by Paterson Group, dated February 1, 2024 and the memo PG6948-MEMO.01 prepared by Paterson Group, issued by Scott S. Dennis, P.Eng on April 29, 2024, that confirms the categories and locations of clay soils.
  - In this case tree planting is restricted by sensitive clay.
  - The following City of Ottawa clay soils guideline applies: Guidelines for Tree Planting in Sensitive Marine Clay Soils-2017.
  - The soil volumes provided are sufficient for a reasonable chance of tree survival. Unless otherwise noted, all new trees on City property meet the minimum soil volume requirements of the following, based on a depth of 1.5m below finished grade, and subtracting the volume of utility trenches.
    - Small tree (mature height up to 7.5m) - 25m<sup>3</sup> minimum soil volume provided.
    - Medium tree (mature height 7.5-14m) - 30m<sup>3</sup> minimum soil volume provided.
- Where trees share a continuous greenspace:
- Two (2) small trees - 15m<sup>3</sup> minimum soil volume provided per tree.
  - Two (2) medium trees - 18m<sup>3</sup> minimum soil volume provided per tree.

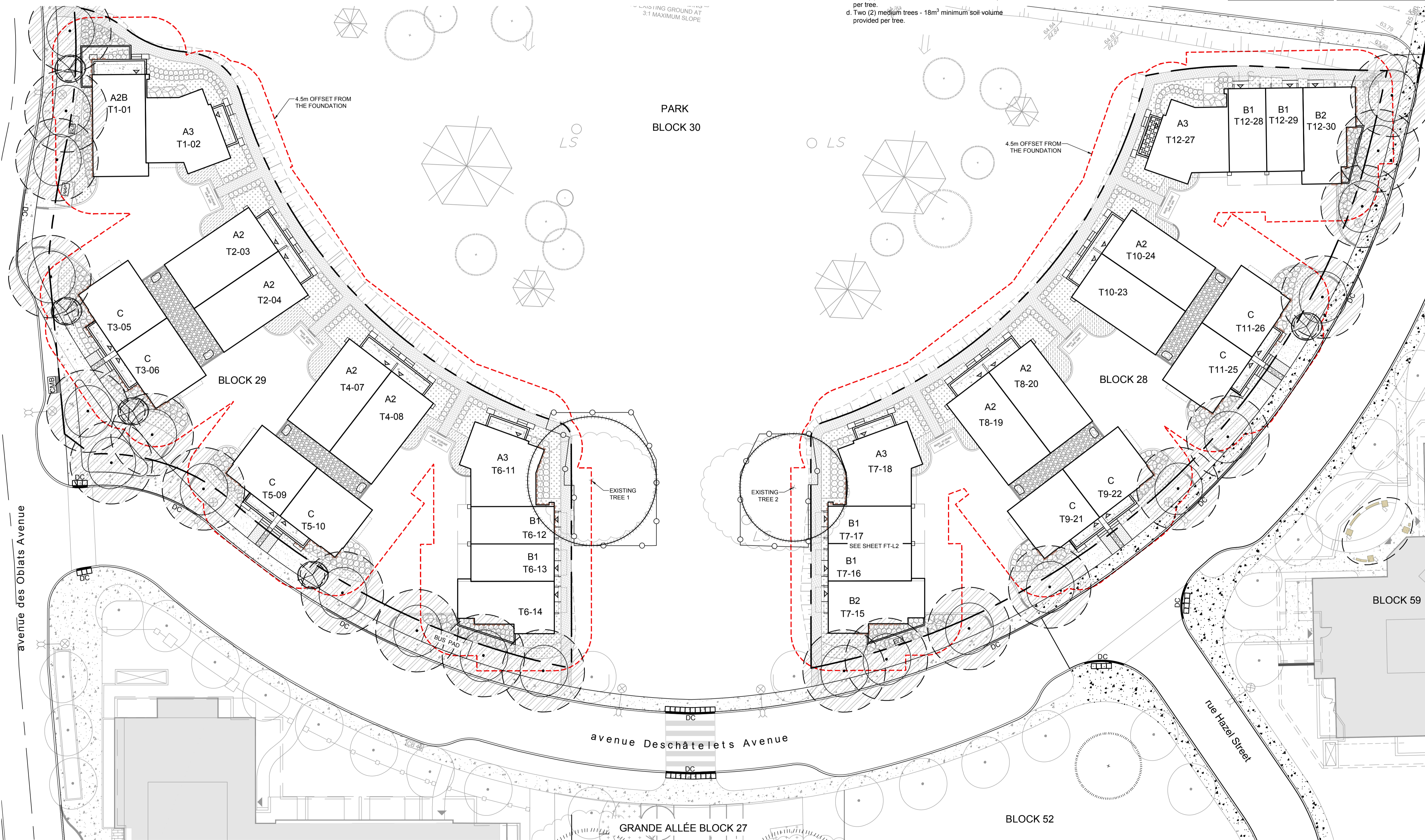
STREETSCAPE

- There are no trees proposed in Block 28.
- Adjacent to Block 28, there are 10 medium trees and 1 small tree proposed in the right of way, along Deschâtelets Avenue.
- There are a total of 3 medium and 2 small trees proposed on the plan, in Block 29.
- Adjacent to Block 29, there are 8 medium and 3 small trees proposed in the right of way, along Deschâtelets Avenue and Oblats Avenue.



LANDSCAPE LEGEND:

- PROPERTY LIMIT
- BUILDING LINE
- EXISTING TREES TO RETAIN
- PROPOSED TREE PROTECTION FENCE 1.8m H.
- PROPOSED DECIDUOUS TREES
- CANOPY COVER AREA OF PROPOSED TREES AT MATURITY
- 4.5m OFFSET FROM BUILDINGS PER GEOTECHNICAL REPORT
- DEEPER LEAN CONCRETE LIMIT, PER GEOTECHNICAL REPORT & GR PLANS
- PROPOSED PERMEABLE PAVERS
- PROPOSED PERMEABLE PAVERS WITH ECORASTER BASE
- PROPOSED CONCRETE
- PROPOSED RIVER STONE
- PERENNIALS
- ORNAMENTAL GRASSES
- SOD
- SHRUBS
- BOULDERS APPROX. 500X500X1000mm
- OFF-SITE DECIDUOUS TREES
- OFF-SITE CONCRETE
- EXISTING STREETLIGHTS

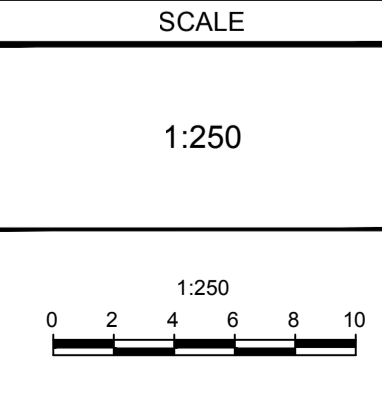


**NOT FOR CONSTRUCTION**

**NOTE:**  
 THE POSITION OF ALL POLE LINES, CONDUITS, WATERMANS, SEWERS AND OTHER UNDERGROUND AND OVERGROUND UTILITIES AND STRUCTURES IS NOT NECESSARILY SHOWN ON THE CONTRACT DRAWINGS, AND WHERE SHOWN, THE ACCURACY OF THE POSITION OF SUCH UTILITIES AND STRUCTURES IS NOT GUARANTEED. BEFORE STARTING WORK, DETERMINE THE EXACT LOCATION OF ALL SUCH UTILITIES AND STRUCTURES AND ASSUME ALL LIABILITY FOR DAMAGE TO THEM.

**Owner:**  
 Regional Group  
 c/o Evan Carlini  
 1737 Woodward Drive  
 Ottawa, ON K2C 0P9  
 Phone: 613-230-2100

No.	REVISION	DATE	BY
2.	RE-ISSUED FOR SITE PLAN APPROVAL	OCT 17/24	RGJ
1.	ISSUED FOR SITE PLAN APPROVAL	AUG 14/24	RGJ



DESIGN	TCB
CHECKED	RGJ
DRAWN	TCB
CHECKED	RGJ
APPROVED	RGJ

**IFS ASSOCIATES**  
 Andrew K. Boyd, R.P.F.  
 Consulting Urban Forester  
 P.O. Box 13593, Kanata,  
 Ontario, Canada K2K 1X6  
 Telephone (613) 838-5717  
 Website www.ifsassociate.ca

**NOVATECH**  
 Engineers, Planners & Landscape Architects  
 Suite 200, 240 Michael Cowpland Drive  
 Ottawa, Ontario, Canada K2M 1P6  
 Telephone (613) 254-9643  
 Facsimile (613) 254-5867  
 Website www.novatech-eng.com

LOCATION CITY OF OTTAWA GREYSTONE VILLAGE	PROJECT No. 114025-00
DRAWING NAME 295 AND 355 DESCHÂTELETS AVE. OVERALL LANDSCAPE PLAN	REV REV # 2
	DRAWING No. 114025-FT-OL

M:\2014\114025\CAD\Landscape\SPA - Subdivision\Forecourt Towns\114025-FT-L.dwg, Overall, 10/17/2024 3:27:36 PM, DWG To PDF.pc3

EXISTING TREE INVENTORY (CONDUCTED NOV 2023 & FEB 2024):

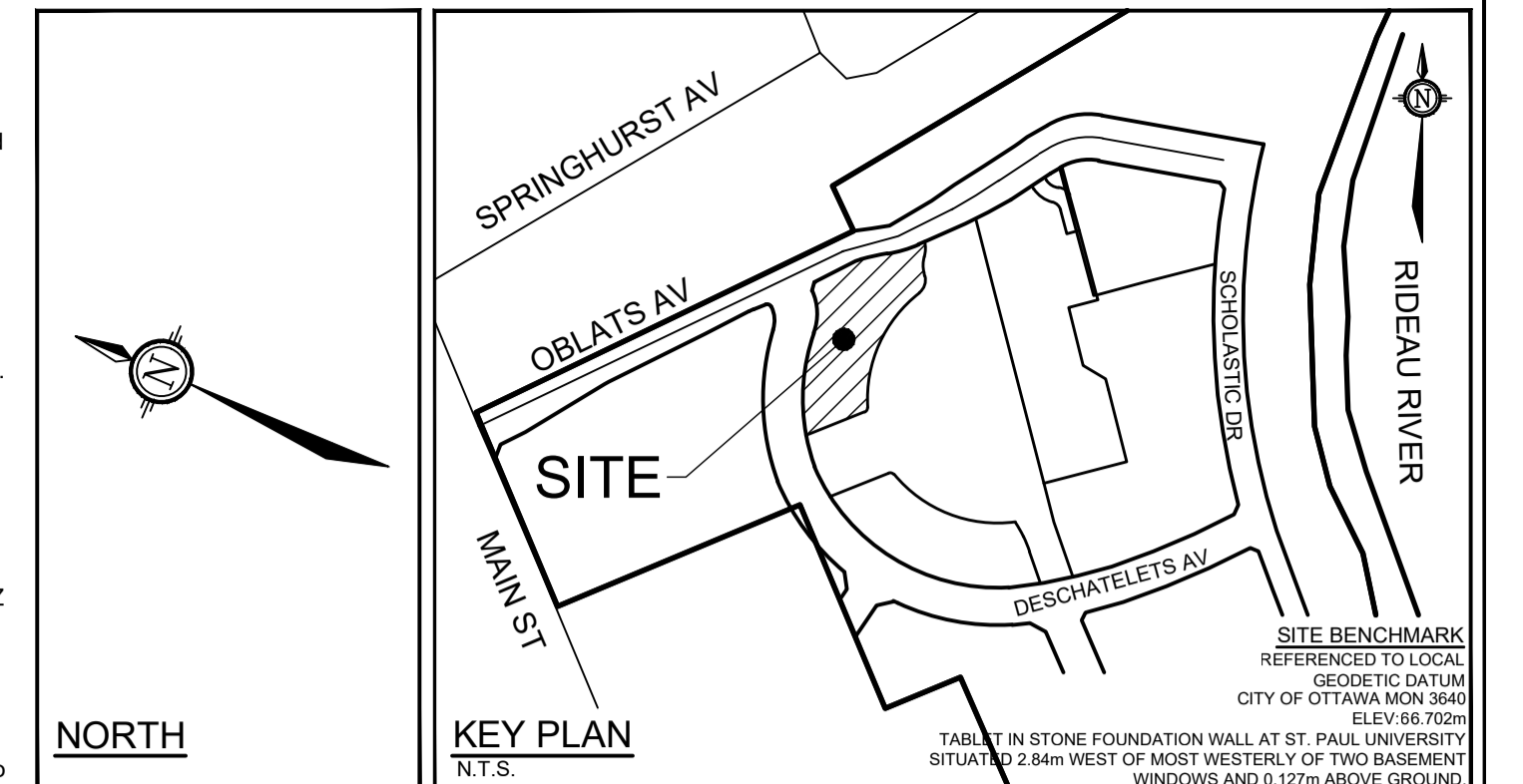
No.	Botanical Name	Common Name	DBH (cm)	CRZ (m)	Condition	Owner	Remarks	Recomm.
1	<i>Acer saccharum</i>	Sugar Maple	78.1	7.81	Poor	City	Lots of dead branches, very mixed results for setting of buds, weak annual incremental growth, Girdling roots visible and compromises evident in root flare. Lack of canopy on the north side. The girdling and binding roots are leading to the tree's decline. Slow annual increment, presence of major deadwood internal to the tree's crown and dieback at its periphery are some of the signs of decline. Decline will continue until the tree becomes hazardous to be public.	PROTECT
2	<i>Acer rubrum</i>	Red Maple	65.2	6.52	Good	City	Good vigour and full canopy on all sides, lots of strong buds set. Good root flare around the trunk.	PROTECT

PROTECT: Protect trees as per contract details and specifications.  
 NOTE: The extent of the root system and the actual impact on the CRZ of existing trees will be confirmed at the site during the site plan application process.

**SOURCE REFERENCE:**  
 TOPOGRAPHIC PLAN OF SURVEY OF PART OF LOT "H" CONCESSION "D" (RIDEAU FRONT), PREPARED BY ANNIS, O-SULLIVAN, VOLLEBECK LTD. ON DECEMBER 15, 2017.  
**TOPOGRAPHIC INFORMATION:**  
 HORIZONTAL DATUM: NAD 83 (ORIGINAL), MTM - ZONE 9  
 VERTICAL DATUM: CGVD2878  
 1. ANNIS, O-SULLIVAN, VOLLEBECK LTD'S TOPOGRAPHIC PLAN OF SURVEY  
 2. NOVATECH TOPOGRAPHIC SURVEY, APRIL, 2024

TREE PROTECTION

- Implement the following protection measures for retained trees, both on site and on adjacent sites, prior to any work activity, including tree removal. Maintain tree protection fence in place and in good condition for the duration of site works:
- The Landscape Architect or Certified Arborist is to determine the location of the tree protection fencing and detail of it on any associated plans for the site (e.g. tree conservation report, tree disclosure report, etc.).
  - Under the guidance of a Landscape Architect or Certified Arborist, erect a fence at the critical root zone (CRZ) of trees. Diameter at breast height (DBH) is the trunk diameter measured at 1.3m height on the tree trunk. The CRZ is calculated as DBH x 10. Refer to the Tree Protection Fence detail.
  - Refer to the Tree Protection Plan for fence location. City Forestry Staff are to approve both the plan and the installed fence prior to work commencement.
  - Do not place any material or equipment within 2m of the CRZ of any tree, including outhouses.
  - Do not attach any signs, notices, or posters to any tree.
  - Do not disturb, raise, or lower the existing grade within the CRZ without approval.
  - Only tunnel or bore when digging within the CRZ of a tree. Hand work only where required within the CRZ; absolutely no machinery permitted.
  - Do not damage the root system, trunk, or branches, or any tree.
  - Do not extend hard surface or significantly change landscaping.
  - Ensure that exhaust fumes from all equipment are directed away from any tree canopy.
  - Prior to work taking place, notify and consult the Landscape Architect and City Forestry Staff if roots must be cut. Roots 20mm or larger should be cut at right angles with clean, sharp horticultural tools without tearing, crushing, or pulling. Refer to City of Ottawa Specification S.P. F-8011 Tree Protection, Excavation of Root Zone.
  - If damaged or objectionable branches are observed, consult the Landscape Architect, before any work is conducted. Do not prune leaders. Do not prune more than 1/4 of crown.
  - Set up a water and fertilizing program, if trees are being affected by site works, to the satisfaction of the Landscape Architect.
  - The Landscape Architect is to prescribe mitigation measures if the protected fenced area must be reduced to facilitate construction. Measures may include the placement of plywood, wood chips, or steel plating over the roots for protection. City Forestry Staff are to approve said measures prior to fence movement.
  - The City of Ottawa By-law, Protects municipal trees and municipal natural areas in the City of Ottawa and trees on private property in the urban area of the City of Ottawa (2020-340).



LANDSCAPE LEGEND:

- 3-D1 DETAIL SHEET # NOVATECH OR CITY  
EG, L1, L2, ETC. DETAIL NUMBER SEE LIST FOR CODE
- PROPERTY LIMIT
- BUILDING LINE
- RETAINING WALL, REFER TO SITE PLAN
- EXISTING TREES TO RETAIN
- CRITICAL ROOT ZONE OF HERITAGE TREES
- CRITICAL ROOT ZONE OF TREES IMPACTED BY DEVELOPMENT
- PROPOSED TREE PROTECTION FENCE 1.8m Ht.
- LIMIT OF TREE CANOPY PRUNING
- PROPOSED SHALLOW ROOT PRUNING, 2024 APPROX. DEPTH OF 250mm
- PROPOSED DEEP ROOT PRUNING, 2025 APPROX. DEPTH OF 1000mm
- STAMPED CONCRETE
- STAMPED CONCRETE WITH ECORASTER BASE
- POURED CONCRETE TERRACE
- RIVER STONE
- PERENNIALS
- ORNAMENTAL GRASSES
- SOD
- SHRUBS
- PROPOSED DECIDUOUS TREES
- BOULDERS APPROX. 500X500X1000mm
- OFF-SITE DECIDUOUS TREES
- OFF-SITE CONCRETE
- EXISTING STREETLIGHTS

GENERAL

- Read and interpret this drawing/ drawing set in conjunction with all the contract details and specifications, including related civil, utility, structural, architectural, mechanical, electrical, environmental, geotechnical, and survey information.
- The Contractor is to determine the exact location, size, material, and elevation of all existing utilities prior to commencing construction. Protect and assume responsibility for all existing utilities regardless of being shown on the drawings.
- It is essential to use the plans and details in conjunction with the specifications and notes.
- Do not scale drawings. Work to dimensions only.
- Protect all existing and retained vegetation for the duration of construction according to the contract details and specifications.
- Reinstate all areas and items damaged or disturbed, beyond the Limit of Work, because of construction activities, including but not limited to construction staging areas, haul roads, stockpiles, etc. to the satisfaction of the Consultant. Unless otherwise noted, Contractor is to reinstate all areas to pre-construction condition or better to the satisfaction of the Contract Administrator.

PLANTING

- Plant material to be No. 1 Grade and is to comply with Canadian Standards for Nursery Stock (latest edition) published by the Canadian Nursery Landscape Association.
- Use structurally sound plant material with strong fibrous root system free of disease, defects, and injuries. Use trees with straight trunks, well and characteristically branched for species. Obtain approval from consultant of plant material at source prior to digging. All trees and shrubs to be container grown, potted, W/B or B/B, as indicated on Plant List. Bare root plants are only acceptable for certain species and as approved by the Landscape Architect.
- Plant material substitutions are not permitted without the written approval from the Consultant, with 48 hours notice, prior to shipping plant material.
- Plant locations are schematic / approximate only. Contractor is to stake out locations on site for approval by the Landscape Architect prior to installation. Contractor will assume full responsibility if the Landscape Architect is not notified.
- The illustrated number of plants shown in the Planting Plan supersedes the estimated number in the Plant List. Contractor to report any discrepancies to the Landscape Architect prior to installation. Contractor will assume full responsibility if the Landscape Architect is not notified.
- Ensure trees are thoroughly watered following planting. Monitor material and ensure adequate moisture until acceptance.
- In heavy clay or poorly drained soils, set root ball with root collar 75-100mm higher than finished grade.
- Approved topsoil depths are as follows:
  - Plant Beds - 450mm continuous depth. Applies to shrubs, perennials, vines, and groundcovers.
  - Sod/ Seed Areas - 100mm depth.
  - Reforestation - 300mm depth.
- Sod to be No. 1 Kentucky Bluegrass Sod grown from minimum mixture of 3 Kentucky Bluegrass cultivars. Quality and source are to comply with Canadian Standards for Nursery Stock, Section 17, (latest edition) published by the Canadian Nursery Landscape Nursery Landscape Association.
- Apply the following mineral fertilizer unless soil tests show other requirements:
  - Plant Beds - (8-32-16), i.e. 8% Nitrogen, 32% Phosphorus, 16% Potash per manufacturer specifications.
  - Sod Areas - (8-32-16), i.e. 8% Nitrogen, 32% Phosphorus, 16% Potash at a rate of 350kg/ha.
- Where applicable, for any plant areas with a mix of species/ cultivars notes, Contractor is to cluster like plants in groups of 3-5 and evenly distribute these in the noted area.

TREE PLANTING IN SENSITIVE CLAY

- The landscape plans have been developed in accordance with the Geotechnical Investigation Report PG6948-1 prepared by Paterson Group, dated February 1, 2024 and the memo PG6948-MEMO.01 prepared by Paterson Group, issued by Scott S. Dennis, P.Eng on April 29, 2024, that confirms the categories and locations of clay soils.
  - In this case tree planting is restricted by sensitive clay. The following City of Ottawa clay soils guideline applies: Guidelines for Tree Planting in Sensitive Marine Clay Soils-2017.
  - The soil volumes provided are sufficient for a reasonable chance of tree survival. Unless otherwise noted, all new trees on City property meet the minimum soil volume requirements of the following, based on a depth of 1.5m below finished grade, and subtracting the volume of utility trenches.
    - Small tree (mature height up to 7.5m) - 25m³ minimum soil volume provided.
    - Medium tree (mature height 7.5-14m) - 30m³ minimum soil volume provided.
- Where trees share a continuous greenspace:
- Two (2) small trees - 15m³ minimum soil volume provided per tree.
  - Two (2) medium trees - 18m³ minimum soil volume provided per tree.

STREETSCAPE

- There are a total of 2 medium and 2 small trees proposed on the plan, in Block 29.
- Adjacent to Block 29, there are 10 medium and 2 small trees proposed in the right of way, along Deschatelets Avenue and Oblats Avenue.

PROPOSED PLANT LIST

KEY	QTY	BOTANICAL NAME	COMMON NAME	SIZE	COND	SPACING	NATIVE/ NON-NATIVE*
<b>Deciduous Street Trees (Medium)</b>							
ARR	1	<i>Acer rubrum</i> 'Franklin'	Redpointe Red Maple	50mm Cal	WB	As Shown	C
COC	1	<i>Celtis occidentalis</i> 'ChicagoLand'	ChicagoLand Hackberry	50mm Cal	WB	As Shown	C
NS	1	<i>Nyssa sylvatica</i>	Black Gum	50mm Cal	WB	As Shown	P
<b>Deciduous Trees (Small)</b>							
CRC	2	<i>Crataegus crus-galli</i> 'Thomas'	Thornless Cockspur Hawthorn	50mm Cal	WB	As Shown	C
<b>Deciduous Street Trees (Medium) - ROW</b>							
ARR	2	<i>Acer rubrum</i> 'Franklin'	Redpointe Red Maple	50mm Cal	WB	As Shown	C
COC	3	<i>Celtis occidentalis</i> 'ChicagoLand'	ChicagoLand Hackberry	50mm Cal	WB	As Shown	C
GBA	4	<i>Ginkgo biloba</i> 'Autumn Gold'	Autumn Gold Ginkgo	50mm Cal	WB	As Shown	E
<b>Deciduous Trees (Small) - ROW</b>							
MR	2	<i>Malus</i> 'Royalty'	Royalty Crabapple	50mm Cal	WB	As Shown	C
<b>Coniferous Shrubs</b>							
Th	3	<i>Taxus media</i> 'Hicksii'	Hicks Yew	100cm BB	WB	As Shown	C
<b>Deciduous Shrubs</b>							
Axl	134	<i>Aronia x Low Scape Mound</i> (LCO/WAM165)	Low Scape Mound Chokeberry	40cm Ht	PT	50cm O.C	C
Car	32	<i>Clethra alnifolia</i> 'Ruby Spice'	Ruby Spice Summersweet	50cm Ht	PT	80cm O.C	C
Cwb	12	<i>Cornus sanguinea</i> 'Winter Beauty'	Winter Beauty Dogwood	60cm Ht	PT	120cm O.C	C
Dkb	12	<i>Dierilla x Kodak Black</i> 'SMANDRSF'	Kodak Black Honeysuckle	60cm Ht	PT	100cm O.C	L
Hfz	108	<i>Hydrangea paniculata</i> 'Tiny Quick Fire' (SMHFSB)	Tiny Quick Fire Hydrangea	40cm Ht	PT	70cm O.C	E
<b>Perennials</b>							
gpr	431	<i>Geranium</i> 'Rozanne'	Rozanne Geranium	1g	PT	45cm O.C	E
gto	141	<i>Gibberna trifoliata</i>	Bowman's Root	1g	PT	75cm O.C	L
hgs	101	<i>Hemerocallis</i> 'Sensle Shepherd'	Gentle Shepherd Daylily	1g	PT	45cm O.C	C
hhr	128	<i>Hemerocallis</i> 'Happy Returns'	Happy Returns Daylily	1g	PT	30cm O.C	C
hpmg	42	<i>Hemerocallis</i> 'Peach Magnolia'	Peach Magnolia Daylily	1g	PT	45cm O.C	C
nwl	54	<i>Nepeta faassenii</i> 'Walker's Low'	Walker's Low Catmint	1g	PT	70cm O.C	E
<b>Ornamental Grasses</b>							
pvn	136	<i>Panicum virgatum</i> 'Northwind'	Northwind Switch Grass	1g	PT	70cm O.C	C

\*Note: (L)Local region, (C)Cultivar of local region plant, (P)Provincial, (E)Exotic or non-native

CITY DETAILS

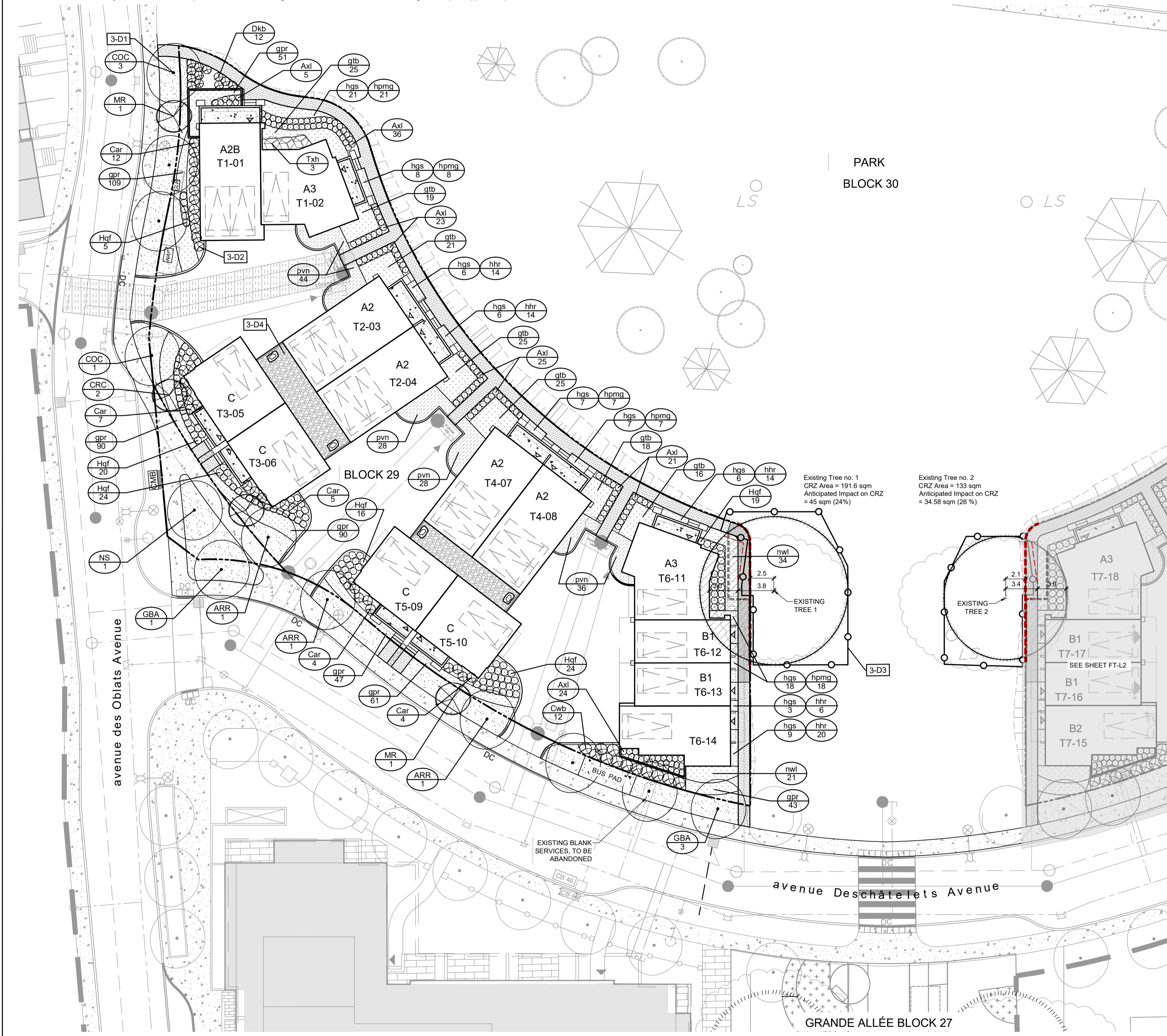
Related details from City of Ottawa Standard Tender Documents Volume No. 2 Standard Detail Drawings.

- SC4. Typical Concrete Sidewalk in Boulevard
- SC5. Sidewalk Construction Joints
- SC7.1 Curb Return Entrances - Uncontrolled Intersections

NOVATECH DETAILS

Found on Sheet L3.  
 D1. Standard Deciduous Tree Planting  
 D2. Shrub and Perennial Planting  
 D3. Tree Protection Fence  
 D4. River Stone Detail

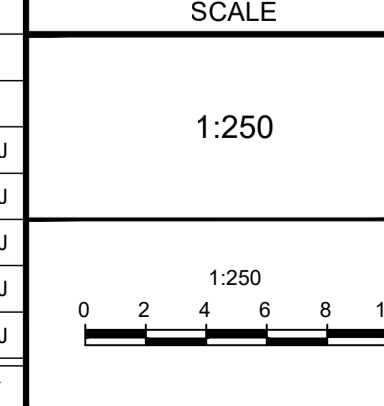
**NOT FOR CONSTRUCTION**



NOTE: THE POSITION OF ALL POLE LINES, CONDUITS, WATERMANS, SEWERS AND OTHER UNDERGROUND AND OVERGROUND UTILITIES AND STRUCTURES IS NOT NECESSARILY SHOWN ON THE CONTRACT DRAWINGS, AND WHERE SHOWN, THE ACCURACY OF THE POSITION OF SUCH UTILITIES AND STRUCTURES IS NOT GUARANTEED. BEFORE STARTING WORK, DETERMINE THE EXACT LOCATION OF ALL SUCH UTILITIES AND STRUCTURES AND ASSUME ALL LIABILITY FOR DAMAGE TO THEM.

Owner:  
 Regional Group  
 c/o Evan Gardiner  
 1737 Woodward Drive  
 Ottawa, ON K2C 0P9  
 Phone: 613-230-2100

No.	REVISION	DATE	BY
5.	RE-ISSUED FOR SITE PLAN APPROVAL	OCT 17/24	RGJ
4.	ISSUED FOR SITE PLAN APPROVAL	AUG 14/24	RGJ
3.	ISSUED FOR COORDINATION	AUG 8/24	RGJ
2.	ISSUED FOR COORDINATION	JULY 4/24	RGJ
1.	ISSUED FOR DISCUSSION	APR 26/24	RGJ



DESIGN	TCB
CHECKED	RGJ
DRAWN	TCB
CHECKED	KW
APPROVED	RGJ

**IFS ASSOCIATES**  
 Andrew K. Boyd, R.P.F.  
 Consulting Urban Forester  
 P.O. Box 13593, Kanata,  
 Ontario, Canada K2K 1X6  
 Telephone (613) 838-5717  
 Website www.ifsassociate.ca

**NOVATECH**  
 Engineers, Planners & Landscape Architects  
 Suite 200, 240 Michael Cowpland Drive  
 Ottawa, Ontario, Canada K2M 1P6  
 Telephone (613) 254-9643  
 Facsimile (613) 254-5867  
 Website www.novatech-eng.com

LOCATION	CITY OF OTTAWA
GREYSTONE VILLAGE, BLOCK 29 (4M-1596)	
DRAWING NAME	295 DESCHÂTELETS AVE. LANDSCAPE PLAN AND TREE CONSERVATION PLAN
PROJECT No.	114025-00
REV	REV # 5
DRAWING No.	114025-F1-L1

M:\2014\114025\CAD\Landscape\SPA - Subdivision\Forecourt Towns\114025-F1-L1.dwg, 10/16/2024 4:51:36 PM, DWG To PDF.pc3

EXISTING TREE INVENTORY (CONDUCTED NOV 2023 & FEB 2024):

No.	Botanical Name	Common Name	DBH (cm)	CRZ (m)	Condition	Owner	Remarks	Recomm.
1	<i>Acer saccharum</i>	Sugar Maple	78.1	7.81	Poor	City	Lots of dead branches, very mixed results for setting of buds, weak annual incremental growth, Girdling roots visible and compromises evident in root flare. Lack of canopy on the north side. The girdling and binding roots are leading to the tree's decline. Slow annual increment, presence of major deadwood internal to the tree's crown and dieback at its periphery are some of the signs of decline. Decline will continue until the tree becomes hazardous to be public.	PROTECT
2	<i>Acer rubrum</i>	Red Maple	65.2	6.52	Good	City	Good vigour and full canopy on all sides, lots of strong buds set. Good root flare around the trunk.	PROTECT

PROTECT: Protect trees as per contract details and specifications.

NOTE: The extent of the root system and the actual impact on the CRZ of existing trees will be confirmed at the site during the site plan application process.

SOURCE REFERENCE:  
TOPOGRAPHIC PLAN OF SURVEY OF PART OF LOT "H" CONCESSION "D" (RIDEAU FRONT), PREPARED BY ANNIS, O-SULLIVAN, VOLLEBEKK LTD. ON DECEMBER 15, 2017.  
TOPOGRAPHIC INFORMATION:  
HORIZONTAL DATUM: NAD 83 (ORIGINAL), MTM - ZONE 9  
VERTICAL DATUM: CGVD2878  
1. ANNIS, O-SULLIVAN, VOLLEBEKK LTD'S TOPOGRAPHIC PLAN OF SURVEY  
2. NOVATECH TOPOGRAPHIC SURVEY, APRIL, 2024

TREE PROTECTION

Implement the following protection measures for retained trees, both on site and on adjacent sites, prior to any work activity, including tree removal. Maintain tree protection fence in place and in good condition for the duration of site works:

- The Landscape Architect or Certified Arborist is to determine the location of the tree protection fencing and detail it on any associated plans for the site (e.g. tree conservation report, tree disclosure report, etc.).
- Under the guidance of a Landscape Architect or Certified Arborist, erect a fence at the critical root zone (CRZ) of trees. Diameter at breast height (DBH) is the trunk diameter measured at 1.3m height on the tree trunk. The CRZ is calculated as DBH x 10. Refer to the Tree Protection Fence detail.
- Refer to the Tree Protection Plan for fence location. City Forestry Staff are to approve both the plan and the installed fence prior to work commencement.
- Do not place any material or equipment within 2m of the CRZ of any tree, including outhouses.
- Do not attach any signs, notices, or posters to any tree.
- Do not disturb, raise, or lower the existing grade within the CRZ without approval.
- Only tunnel or bore when digging within the CRZ of a tree. Hand work only where required within the CRZ; absolutely no machinery permitted.
- Do not damage the root system, trunk, or branches, or any tree.
- Do not extend hard surface or significantly change landscaping.
- Ensure that exhaust fumes from all equipment are directed away from any tree canopy.
- Prior to work taking place, notify and consult the Landscape Architect and City Forestry Staff if roots must be cut. Roots 20mm or larger should be cut at right angles with clean, sharp horticultural tools without tearing, crushing, or pulling. Refer to City of Ottawa Specification S.P. F-8011 Tree Protection, Excavation of Root Zone.
- If damaged or objectionable branches are observed, consult the Landscape Architect, before any work is conducted. Do not prune leaders. Do not prune more than 1/4 of crown.
- Set up a water and fertilizing program, if trees are being affected by site works, to the satisfaction of the Landscape Architect.
- The Landscape Architect is to prescribe mitigation measures if the protected fenced area must be reduced to facilitate construction. Measures may include the placement of plywood, wood chips, or steel plating over the roots for protection. City Forestry Staff are to approve said measures prior to fence movement.
- City of Ottawa By-law: Protects municipal trees and municipal natural areas in the City of Ottawa and trees on private property in the urban area of the City of Ottawa (2020-340).

TREE PLANTING IN SENSITIVE CLAY

- The landscape plans have been developed in accordance with the Geotechnical Investigation Report PG6948-1 prepared by Paterson Group, dated February 1, 2024 and the memo PG6948-MEMO.01 prepared by Paterson Group, issued by Scott S. Dennis, P.Eng on April 29, 2024, that confirms the categories and locations of clay soils.
  - In this case tree planting is restricted by sensitive clay.
  - The following City of Ottawa clay soils guideline applies: Guidelines for Tree Planting in Sensitive Marine Clay Soils-2017.
  - The soil volumes provided are sufficient for a reasonable chance of tree survival. Unless otherwise noted, all new trees on City property meet the minimum soil volume requirements of the following, based on a depth of 1.5m below finished grade, and subtracting the volume of utility trenches.
    - Small tree (mature height up to 7.5m) - 25m<sup>3</sup> minimum soil volume provided.
    - Medium tree (mature height 7.5-14m) - 30m<sup>3</sup> minimum soil volume provided.
- Where trees share a continuous greenspace:
- Two (2) small trees - 15m<sup>3</sup> minimum soil volume provided per tree.
  - Two (2) medium trees - 18m<sup>3</sup> minimum soil volume provided per tree.

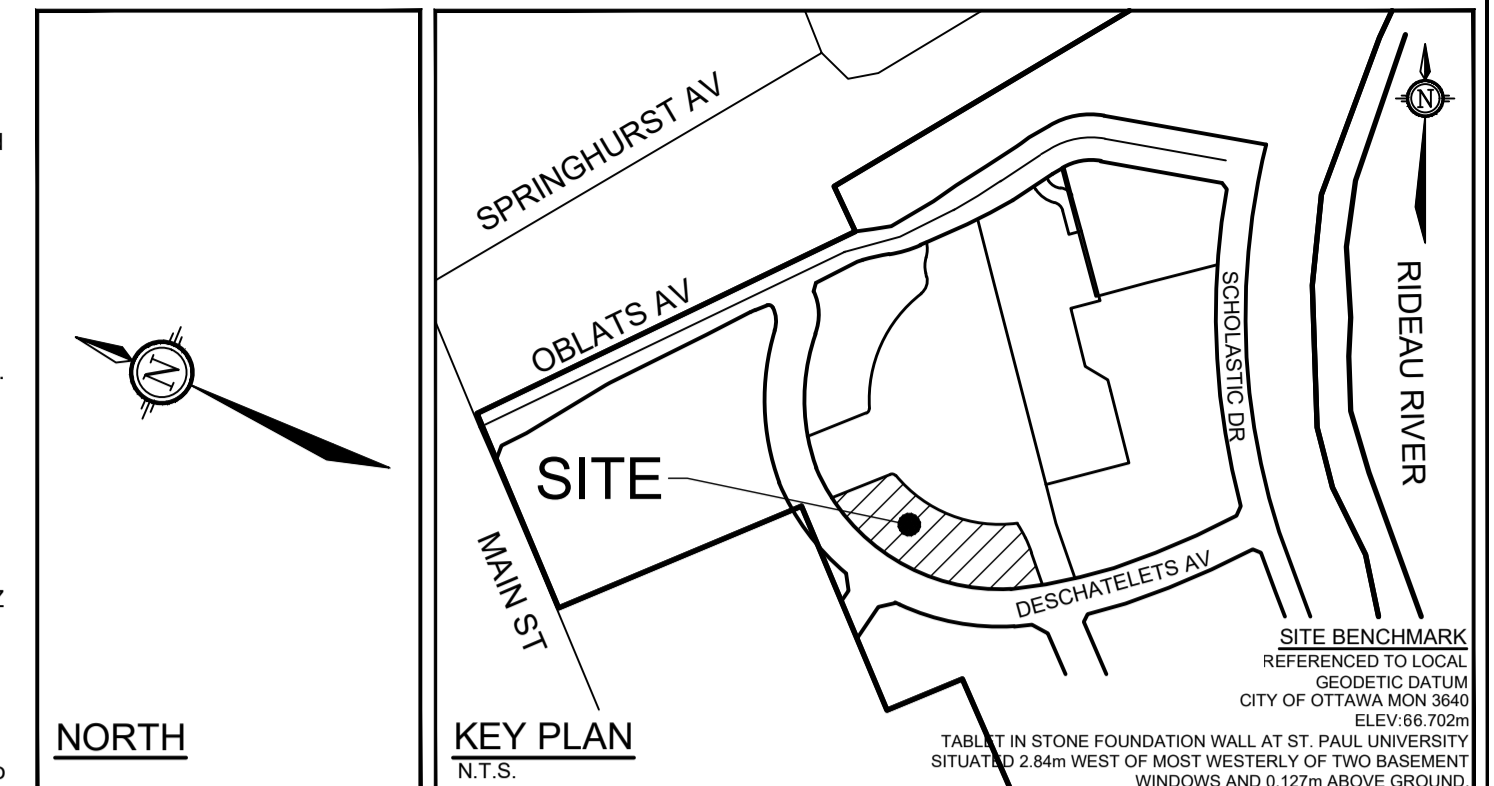
STREETSCAPE

- There are no trees proposed in the Block 28.
- Adjacent to Block 28, there are 10 medium trees and 1 small tree proposed in the right of way, along Deschatelets Avenue.

PROPOSED PLANT LIST

KEY	QTY	BOTANICAL NAME	COMMON NAME	SIZE	COND	SPACING	NATIVE/ NON-NATIVE*
<b>Deciduous Street Trees (Medium) - ROW</b>							
ARR	5	<i>Acer rubrum</i> 'Franklin'	Redpointe Red Maple	50cm Gal	WB	As Shown	C
COC	2	<i>Celtis occidentalis</i> 'Chicago Land'	Chicago Land Hackberry	50cm Gal	WB	As Shown	C
GBA	3	<i>Ginkgo biloba</i> 'Autumn Gold'	Autumn Gold Ginkgo	50cm Gal	WB	As Shown	E
<b>Deciduous Trees (Small) - ROW</b>							
MR	1	<i>Malus Royalty</i>	Royalty Crabapple	50cm Gal	WB	As Shown	C
<b>Coniferous Shrubs</b>							
Txh	2	<i>Taxus media</i> 'Hicksii'	Hicks Yew	100cm Ht	BB	As Shown	C
<b>Deciduous Shrubs</b>							
Axl	14	<i>Larix x Low Scape Mound</i> (UCONNAM16S)	Low Scape Mound Chokeberry	40cm Ht	PT	50cm O.C.	C
Car	15	<i>Cedre xifolia</i> 'Ruby Spice'	Ruby Spice Summerwest	50cm Ht	PT	80cm O.C.	C
Cwb	22	<i>Cornus sanguinea</i> 'Winter Beauty'	Winter Beauty Dogwood	60cm Ht	PT	120cm O.C.	C
Hq	59	<i>Hydrangea paniculata</i> 'Tiny Quack Fire' (SMHPS8)	Tiny Quack Fire Hydrangea	40 cm Ht	PT	70cm O.C.	E
<b>Perennials</b>							
gpr	342	<i>Seranium 'Rozanne'</i>	Rozanne Cranesbill	1g	PT	45cm O.C.	E
gtb	107	<i>Gillenia triflora</i>	Bowman's Root	1g	PT	60cm O.C.	L
hgs	123	<i>Hemerocallis 'Gentle Shepherd'</i>	Gentle Shepherd Daylily	1g	PT	45cm O.C.	C
htr	156	<i>Hemerocallis 'Happy Returns'</i>	Happy Returns Daylily	1g	PT	30cm O.C.	C
hpmg	52	<i>Hemerocallis 'Peach Magnolia'</i>	Peach Magnolia Daylily	1g	PT	45cm O.C.	C
nwl	96	<i>Paeonia taosensis</i> 'Walker's Low'	Walker's Low Peony	1g	PT	70cm O.C.	E
<b>Ornamental Grasses</b>							
zst	111	<i>Panicum virgatum</i> 'Northwind'	Northwind Switch Grass	1g	PT	70cm O.C.	C

\*Note: (L) local region, (C) cultivar of local region plant, (P) provincial, (E) exotic or non-native



LANDSCAPE LEGEND:

- 3-D1 DETAIL SHEET # EG, L1, L2, ETC. NOVATECH OR CITY DETAIL NUMBER SEE LIST FOR CODE
- PROPERTY LIMIT
- BUILDING LINE
- RETAINING WALL, REFER TO SITE PLAN
- EXISTING TREES TO RETAIN
- CRITICAL ROOT ZONE OF HERITAGE TREES
- CRITICAL ROOT ZONE OF TREES IMPACTED BY DEVELOPMENT
- PROPOSED TREE PROTECTION FENCE 1.8m Ht.
- LIMIT OF TREE CANOPY PRUNING
- PROPOSED SHALLOW ROOT PRUNING, 2024 APPROX. DEPTH OF 250mm
- PROPOSED DEEP ROOT PRUNING, 2025 APPROX. DEPTH OF 1000mm
- STAMPED CONCRETE
- STAMPED CONCRETE WITH ECORASTER BASE
- POURED CONCRETE TERRACE
- RIVER STONE
- PERENNIALS
- ORNAMENTAL GRASSES
- SOD
- SHRUBS
- PROPOSED DECIDUOUS TREES
- BOULDERS APPROX. 500X500X1000mm
- OFF-SITE DECIDUOUS TREES
- OFF-SITE CONCRETE
- EXISTING STREETLIGHTS

GENERAL

- Read and interpret this drawing/ drawing set in conjunction with all the contract details and specifications, including related civil, utility, structural, architectural, mechanical, electrical, environmental, geotechnical, and survey information.
- The Contractor is to determine the exact location, size, material, and elevation of all existing utilities prior to commencing construction. Protect and assume responsibility for all existing utilities regardless of being shown on the drawings.
- It is essential to use the plans and details in conjunction with the specifications and notes.
- Do not scale drawings. Work to dimensions only.
- Protect all existing and retained vegetation for the duration of construction according to the contract details and specifications.
- Reinstate all areas and items damaged or disturbed, beyond the Limit of Work, because of construction activities, including but not limited to construction staging areas, haul roads, stockpiles, etc. to the satisfaction of the Consultant. Unless otherwise noted, Contractor is to reinstate all areas to pre-construction condition or better to the satisfaction of the Contract Administrator.

PLANTING

- Plant material to be No. 1 Grade and is to comply with Canadian Standards for Nursery Stock (latest edition) published by the Canadian Nursery Landscape Association.
- Use structurally sound plant material with strong fibrous root system free of disease, defects, and injuries. Use trees with straight trunks, well and characteristically branched for species. Obtain approval from consultant of plant material at source prior to digging. All trees and shrubs to be container grown, potted, W/B or B/B, as indicated on Plant List. Bare root plants are only acceptable for certain species and as approved by the Landscape Architect.
- Plant material substitutions are not permitted without the written approval from the Consultant, with 48 hours notice, prior to shipping plant material.
- Plant locations are schematic / approximate only. Contractor is to stake out locations on site for approval by the Landscape Architect prior to installation. Contractor will assume full responsibility if the Landscape Architect is not notified.
- The illustrated number of plants shown in the Planting Plan supersedes the estimated number in the Plant List. Contractor to report any discrepancies to the Landscape Architect prior to installation. Contractor will assume full responsibility if the Landscape Architect is not notified.
- Ensure trees are thoroughly watered following planting. Monitor material and ensure adequate moisture until acceptance.
- In heavy clay or poorly drained soils, set root ball with root collar 75-100mm higher than finished grade.
- Approved topsoil depths are as follows:
  - Plant Beds - 450mm continuous depth. Applies to shrubs, perennials, vines, and groundcovers.
  - Sod/ Seed Areas - 100mm depth.
  - Reforestation - 300mm depth.
- Sod to be No. 1 Kentucky Bluegrass Sod grown from minimum mixture of 3 Kentucky Bluegrass cultivars. Quality and source are to comply with Canadian Standards for Nursery Stock, Section 17, (latest edition) published by the Canadian Nursery Landscape Nursery Landscape Association.
- Apply the following mineral fertilizer unless soil tests show other requirements:
  - Plant Beds - (8-32-16), i.e. 8% Nitrogen, 32% Phosphorus, 16% Potash per manufacturer specifications.
  - Sod Areas - (8-32-16), i.e. 8% Nitrogen, 32% Phosphorus, 16% Potash at a rate of 350kg/ha.
- Where applicable, for any plant areas with a mix of species/ cultivars notes, Contractor is to cluster like plants in groups of 3-5 and evenly distribute these in the noted area.

CITY DETAILS

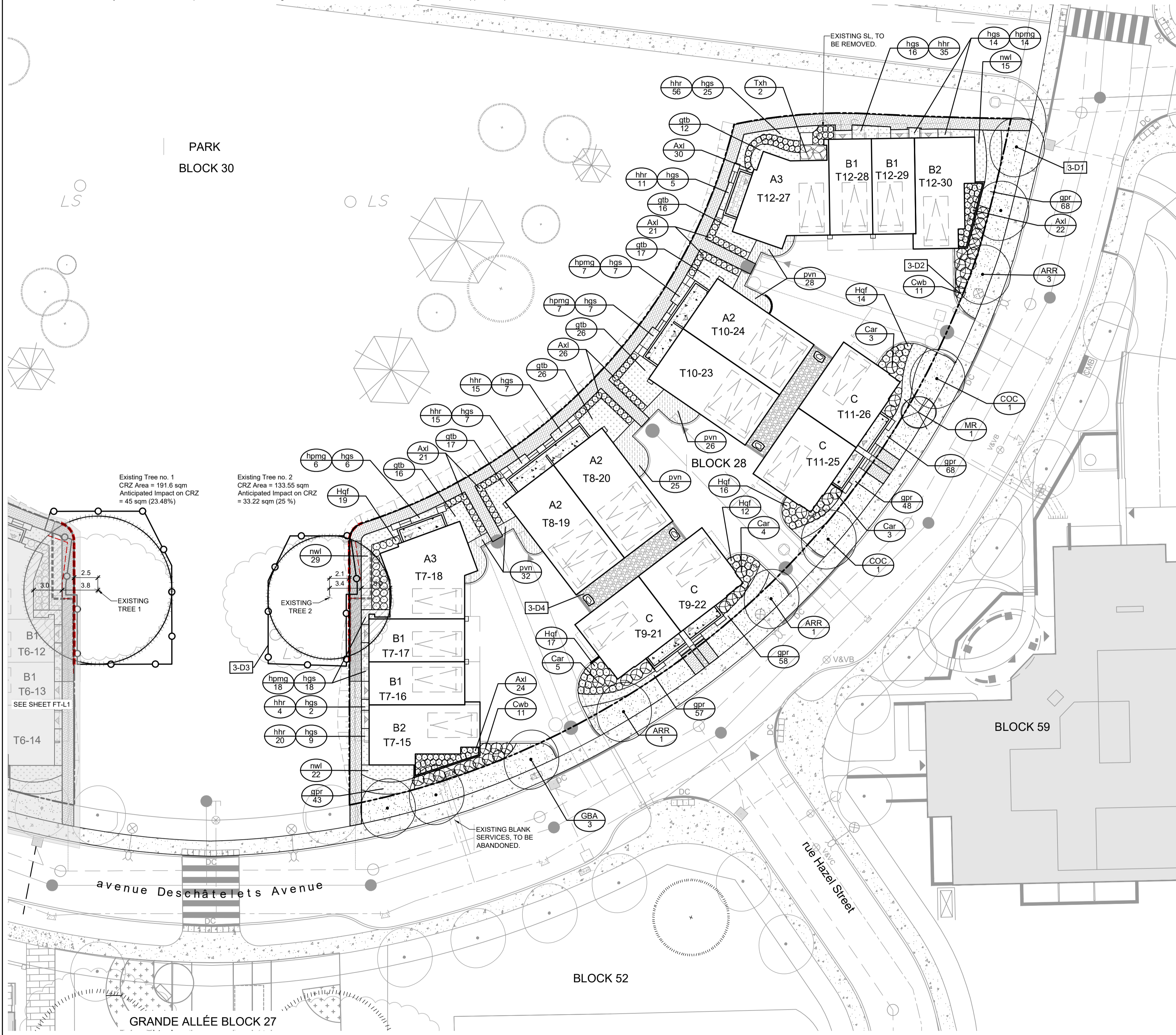
Related details from City of Ottawa Standard Tender Documents Volume No. 2 Standard Detail Drawings.

- SC4. Typical Concrete Sidewalk in Boulevard
- SC5. Sidewalk Construction Joints
- SC7.1 Curb Return Entrances - Uncontrolled Intersections

NOVATECH DETAILS

- Found on Sheet L3.
- D1. Standard Deciduous Tree Planting
- D2. Shrub and Perennial Planting
- D3. Tree Protection Fence
- D4. River Stone Detail

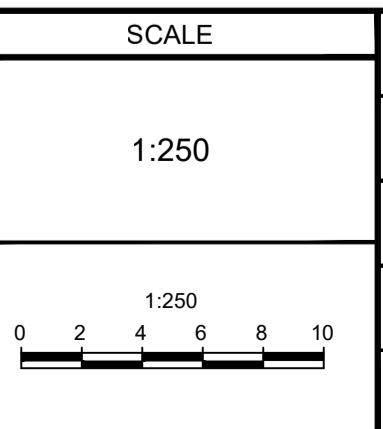
**NOT FOR CONSTRUCTION**



NOTE: THE POSITION OF ALL POLE LINES, CONDUITS, WATERMANS, SEWERS AND OTHER UNDERGROUND AND OVERGROUND UTILITIES AND STRUCTURES IS NOT NECESSARILY SHOWN ON THE CONTRACT DRAWINGS, AND WHERE SHOWN, THE ACCURACY OF THE POSITION OF SUCH UTILITIES AND STRUCTURES IS NOT GUARANTEED. BEFORE STARTING WORK, DETERMINE THE EXACT LOCATION OF ALL SUCH UTILITIES AND STRUCTURES AND ASSUME ALL LIABILITY FOR DAMAGE TO THEM.

Owner:  
Regional Group  
c/o Evan Garfield  
1737 Woodward Drive  
Ottawa, ON K2C 0P9  
Phone: 613-230-2160

No.	REVISION	DATE	BY
5.	RE-ISSUED FOR SITE PLAN APPROVAL	OCT 17/24	RGJ
4.	ISSUED FOR SITE PLAN APPROVAL	AUG 14/24	RGJ
3.	ISSUED FOR COORDINATION	AUG 8/24	RGJ
2.	ISSUED FOR COORDINATION	JULY 4/24	RGJ
1.	ISSUED FOR DISCUSSION	APR 26/24	RGJ



FOR REVIEW ONLY

DESIGN: TCB

CHECKED: RGJ

DRAWN: TCB

CHECKED: KW

APPROVED: RGJ

IFS ASSOCIATES

Andrew K. Boyd, R.P.F.  
Consulting Urban Forester  
P.O. Box 13593, Kanata,  
Ontario, Canada K2K 1X6

Telephone (613) 838-5717  
Website www.ifsassociate.ca

NOVATECH

Engineers, Planners & Landscape Architects  
Suite 200, 240 Michael Cowpland Drive  
Ottawa, Ontario, Canada K2M 1P6

Telephone (613) 254-9643  
Facsimile (613) 254-5867  
Website www.novatech-eng.com

LOCATION  
CITY OF OTTAWA  
GREYSTONE VILLAGE, BLOCK 28 (4M-1596)

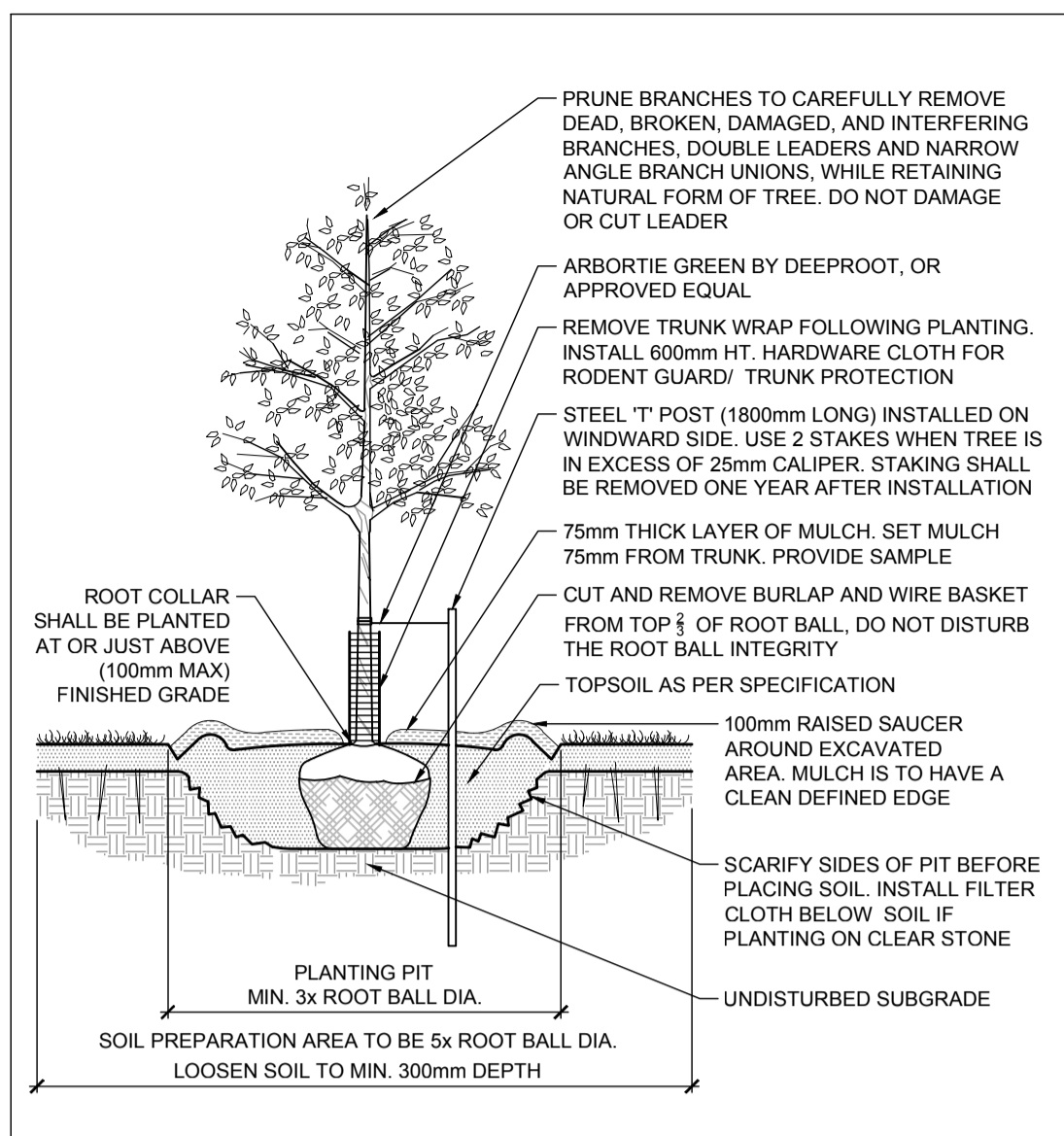
DRAWING NAME  
355 DESCHATELETS AVE.  
LANDSCAPE PLAN AND  
TREE CONSERVATION PLAN

PROJECT No. 114025-00

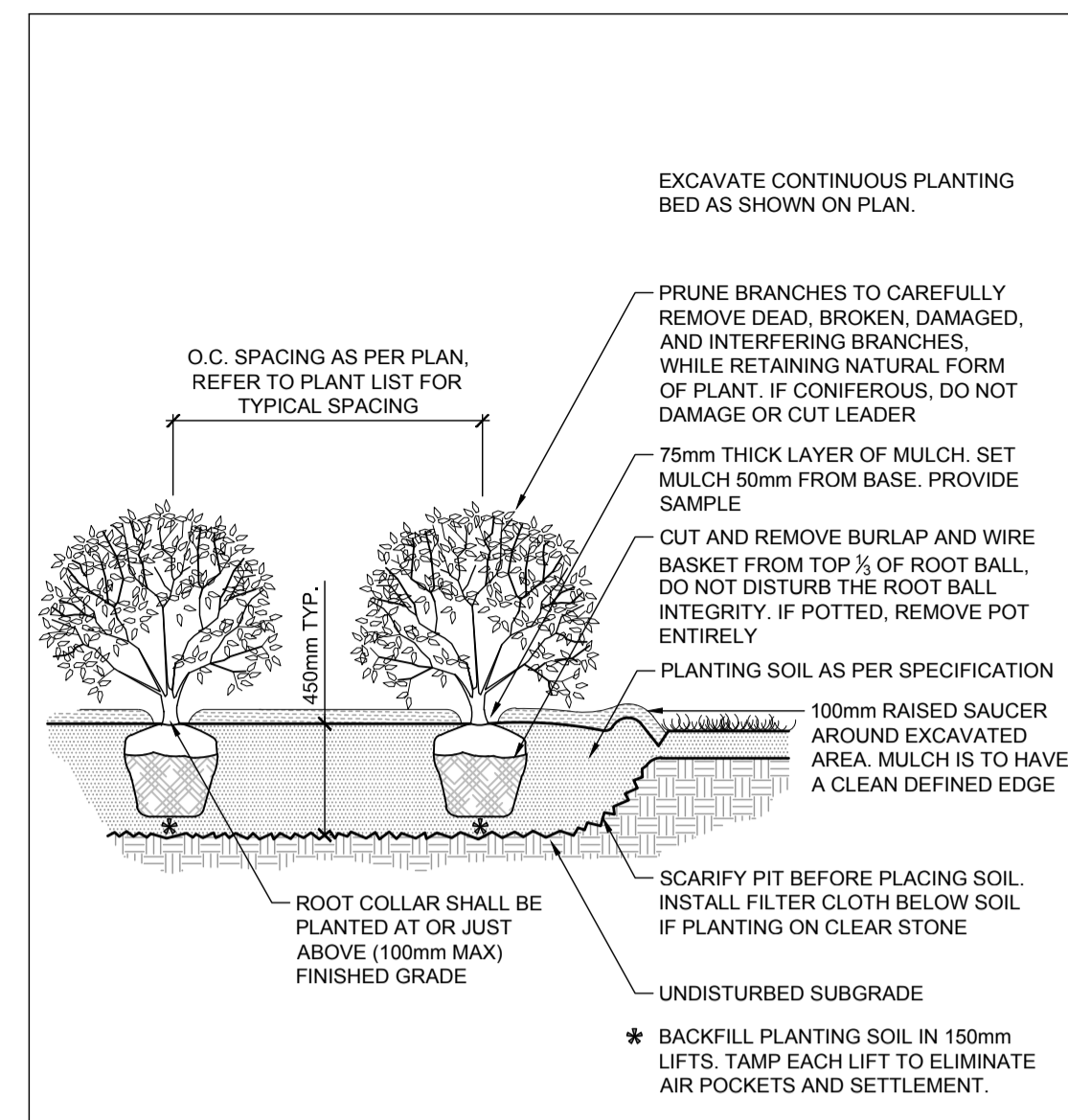
REV # 5

DRAWING No. 114025-FT-L2

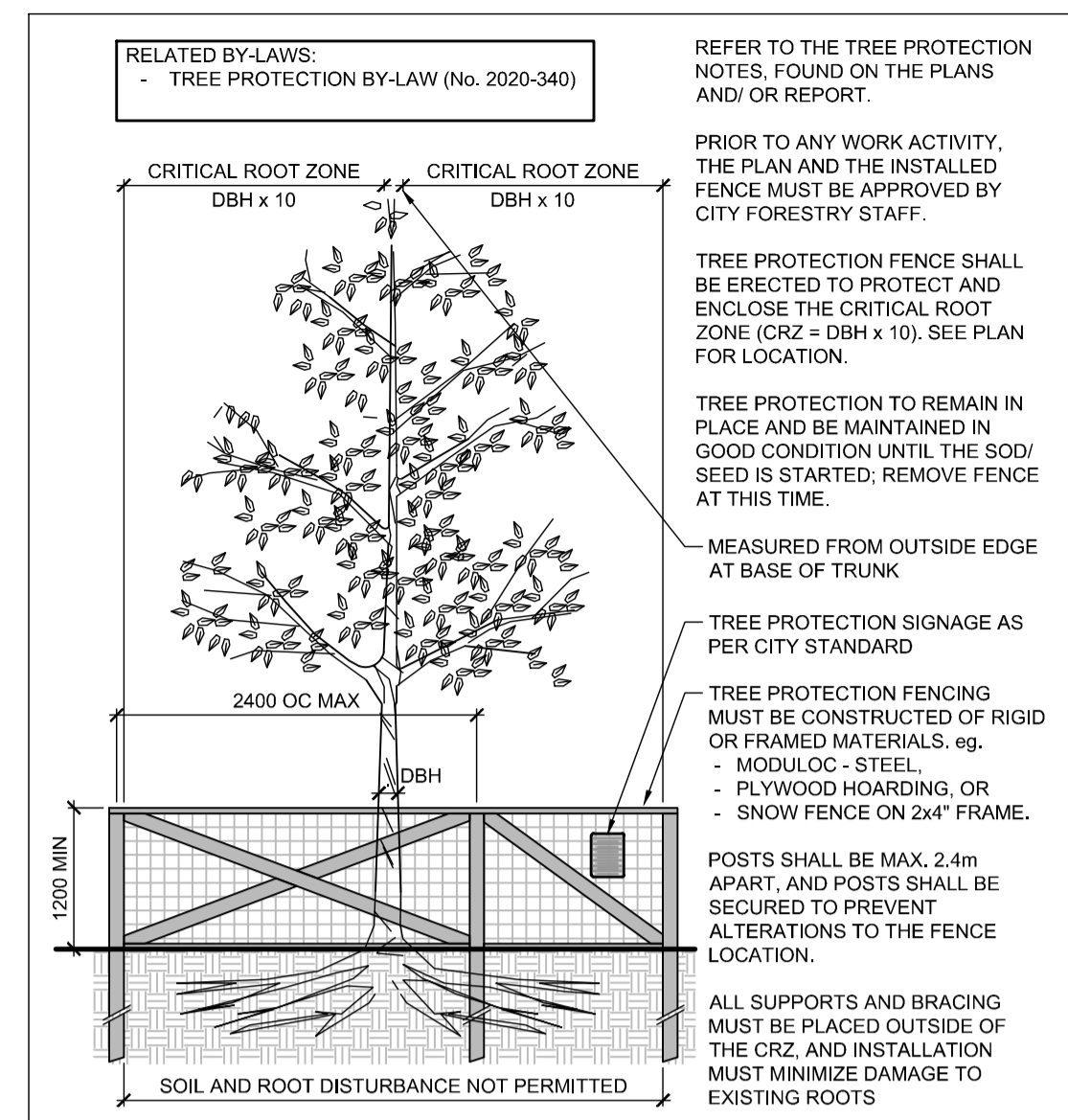
M:\2014\114025\CAD\Landscape\SPA - Subdivision\_Forecourt\Town\114025-FT-L.dwg, L2 (Blk 28), 10/16/2024 4:52:41 PM, DWG To PDF.pc3



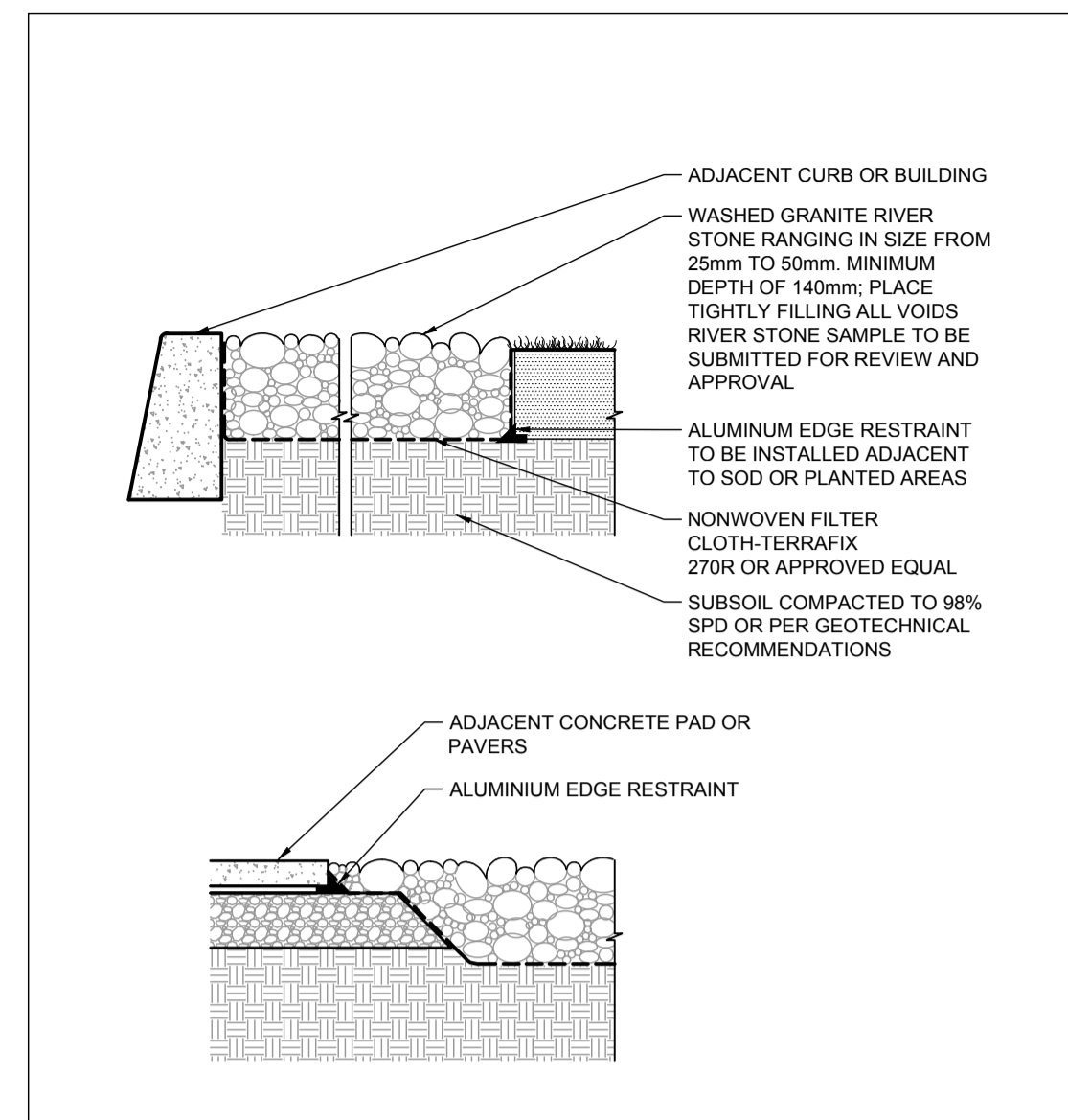
STANDARD DECIDUOUS TREE PLANTING **D1**



SHRUB AND PERENNIAL PLANTING **D2**



TREE PROTECTION FENCE **D3**



RIVER STONE DETAIL **D4**

**NOT FOR CONSTRUCTION**

NOTE:  
THE POSITION OF ALL POLE LINES, CONDUITS, WATERMANS, SEWERS AND OTHER UNDERGROUND AND OVERGROUND UTILITIES AND STRUCTURES IS NOT NECESSARILY SHOWN ON THE CONTRACT DRAWINGS, AND WHERE SHOWN, THE ACCURACY OF THE POSITION OF SUCH UTILITIES AND STRUCTURES IS NOT GUARANTEED. BEFORE STARTING WORK, DETERMINE THE EXACT LOCATION OF ALL SUCH UTILITIES AND STRUCTURES AND ASSUME ALL LIABILITY FOR DAMAGE TO THEM.

Owner:  
Regional Group  
c/o Evan Garfield  
1737 Woodward Drive  
Ottawa, ON K2C 0P9  
Phone: (613) 230-2100

No.	REVISION	DATE	BY
5.	RE-ISSUED FOR SITE PLAN APPROVAL	OCT 17/24	RGJ
4.	ISSUED FOR SITE PLAN APPROVAL	AUG 14/24	RGJ
3.	ISSUED FOR COORDINATION	AUG 8/24	RGJ
2.	ISSUED FOR COORDINATION	JULY 4/24	RGJ
1.	ISSUED FOR DISCUSSION	APR 26/24	RGJ

SCALE	DESIGN
	TCB
	CHECKED
	RGJ
	DRAWN
	TCB
	CHECKED
	KW
	APPROVED
	RGJ

**FOR REVIEW ONLY**

Andrew K. Boyd, R.P.F.  
Consulting Urban Forester  
P.O. Box 13593, Kanata,  
Ontario, Canada K2K 1X6

Telephone (613) 838-5717  
Website www.ifsassociate.ca

Professional Seal: Andrew K. Boyd, R.P.F., Member of the Ontario Association of Landscape Architects, dated Oct 17/24.

**IFS ASSOCIATES**

Andrew K. Boyd, R.P.F.  
Consulting Urban Forester  
P.O. Box 13593, Kanata,  
Ontario, Canada K2K 1X6

Telephone (613) 838-5717  
Website www.ifsassociate.ca

**NOVATECH**

Engineers, Planners & Landscape Architects  
Suite 200, 240 Michael Cowpland Drive  
Ottawa, Ontario, Canada K2M 1P6

Telephone (613) 254-9643  
Facsimile (613) 254-5867  
Website www.novatech-eng.com

LOCATION  
CITY OF OTTAWA  
GREYSTONE VILLAGE

DRAWING NAME  
295 AND 355 DESCHÂTELETS AVE.  
LANDSCAPE DETAILS

PROJECT No. 114025-00  
REV # 5  
DRAWING No. 114025-FT-D1

M:\2014\114025\CAD\Landscape\SPA - Subdivision\Forecourt Towns\114025-FT-L.dwg, L3, 10/15/2024 3:19:22 PM, DWG To PDF.pc3