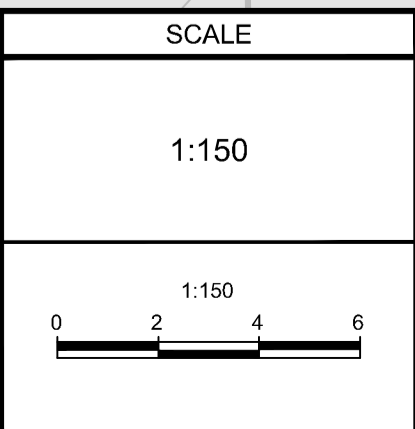


- CONSTRUCTION MANAGEMENT PLAN NOTES:**
1. ARGYLE AVENUE IS A ONE WAY STREET WITH A SINGLE EASTBOUND TRAFFIC LANE AND ON A STREET PARKING AISLE. BUILDING SERVICES CONSTRUCTION WORK TO BE CONDUCTED IN TWO STAGES (STAGE 1 AND STAGES 2a AND 2b). BOTH STAGES WILL REQUIRE SECTIONS OF ON-STREET PARKING BEING RESTRICTED DURING CONSTRUCTION.
  2. STAGE 1 AND STAGE 2a CONSISTS OF RESTRICTING THE STREET PARKING IN FRONT OF THE DEVELOPMENT, CLOSING THE EASTBOUND LANE, AND UTILIZING THE PARKING AISLE FOR EASTBOUND TRAFFIC. DURING THESE STAGES THE BUILDING'S WATER, SANITARY, AND STORM SERVICES WILL BE INSTALLED.
  3. THE SOUTHERN PEDESTRIAN SIDEWALK IS TO BE CLOSED AND FOOT TRAFFIC TO BE REDIRECTED TO THE NORTHERN ARGYLE SIDEWALK AT BANK STREET AND O'CONNOR STREET.
  4. STAGE 2b CONSISTS OF RESTRICTING ON-STREET PARKING FOR THE REMAINING WATER SERVICE INSTALLATION AND OPENING THE EASTBOUND LANE TO TRAFFIC. REFER TO 123062-CMP2 FOR STAGE 2b DETAILS.
  5. REFER TO 123062-CMP3 FOR TEMPORARY ROAD CLOSURE DETAILS.
  6. A DETAILED CONSTRUCTION MANAGEMENT PLAN TO BE PREPARED AND PROVIDED BY THE CONTRACTOR, ONCE ONE IS RETAINED.

**NOTE:**  
 THE POSITION OF ALL POLE LINES, CONDUITS, WATERMANS, SEWERS AND OTHER UNDERGROUND AND OVERGROUND UTILITIES AND STRUCTURES IS NOT NECESSARILY SHOWN ON THE CONTRACT DRAWINGS, AND WHERE SHOWN, THE ACCURACY OF THE POSITION OF SUCH UTILITIES AND STRUCTURES IS NOT GUARANTEED. BEFORE STARTING WORK, DETERMINE THE EXACT LOCATION OF ALL SUCH UTILITIES AND STRUCTURES AND ASSUME ALL LIABILITY FOR DAMAGE TO THEM.

**NOT FOR CONSTRUCTION**

No.	REVISION	DATE	BY
1.	ISSUED FOR ZBA / SPC SUBMISSION	SEP 13, 2024	GJM

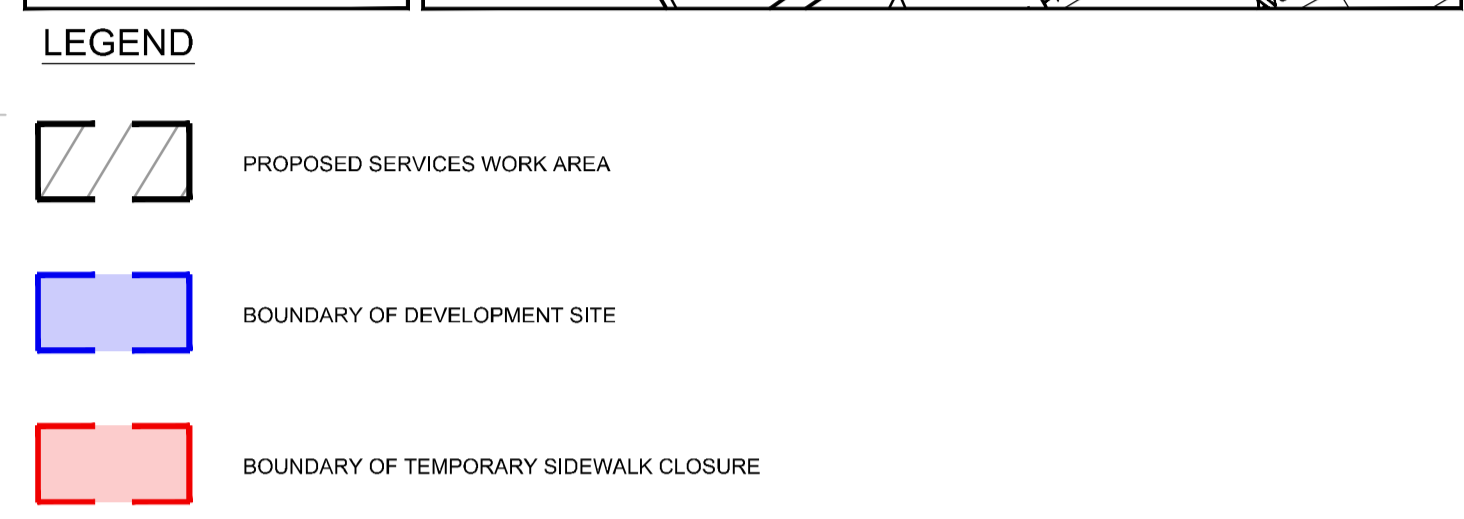
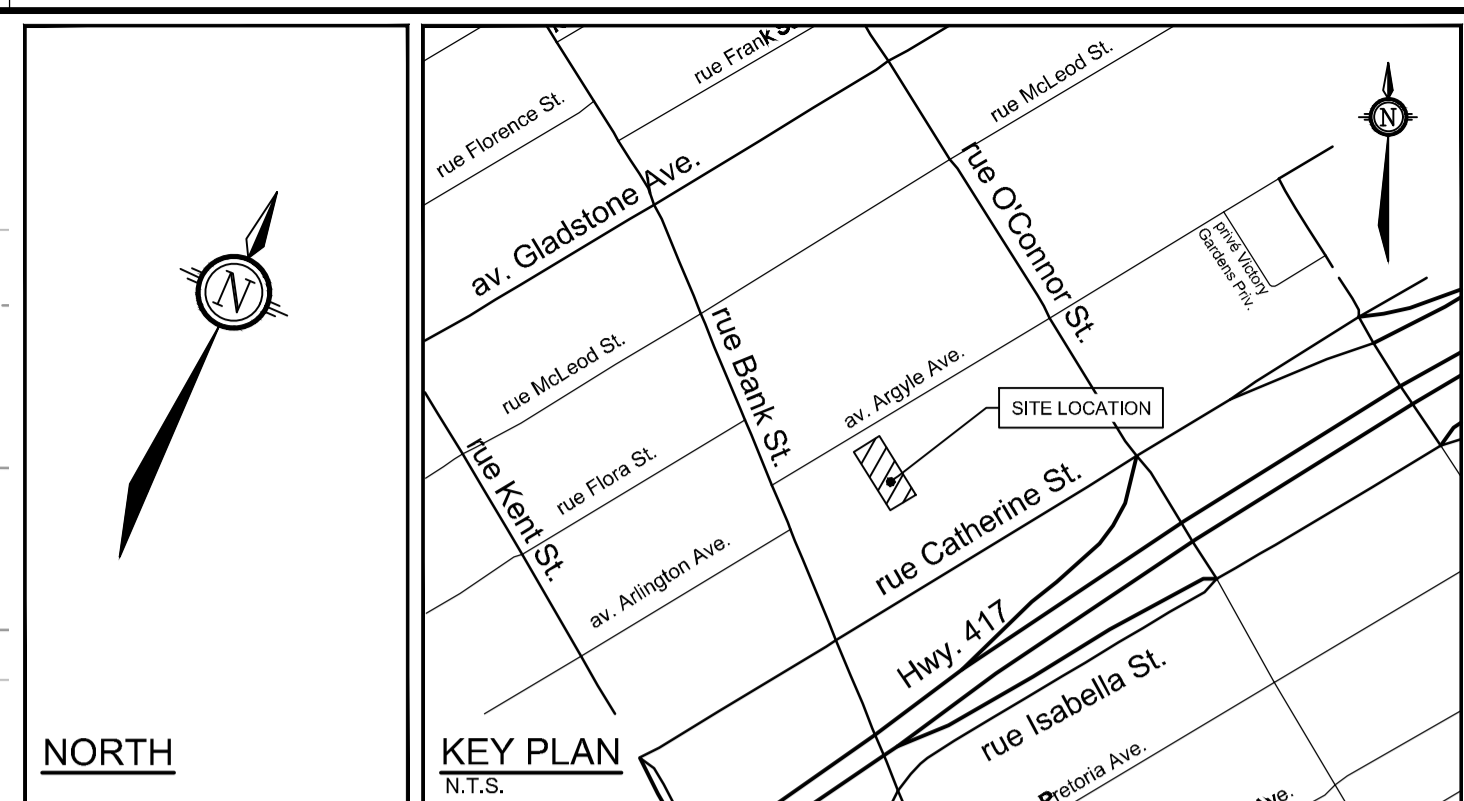
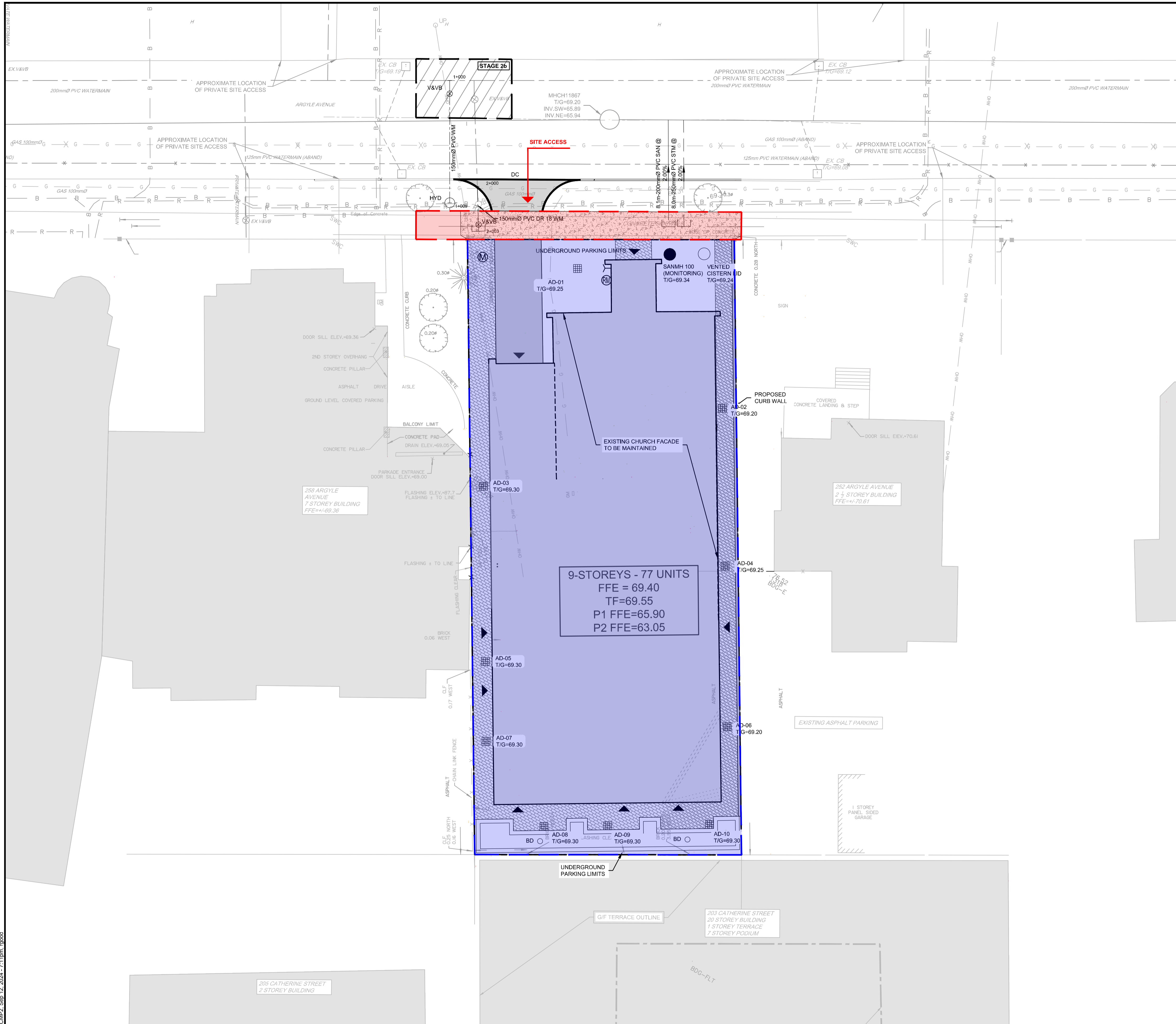


DESIGN	FOR REVIEW ONLY
RJG	
CHECKED ARM	
DRAWN RJG	
CHECKED ARM	
APPROVED GJM	

**NOVATECH**  
 Engineers, Planners & Landscape Architects  
 Suite 200, 240 Michael Cowpland Drive  
 Ottawa, Ontario, Canada K2M 1P6  
 Telephone (613) 254-9643  
 Facsimile (613) 254-5867  
 Website www.novatech-eng.com

LOCATION CITY OF OTTAWA 254 ARGYLE AVENUE	
DRAWING NAME <b>PRELIMINARY CONSTRUCTION MANAGEMENT PLAN 1</b>	
PROJECT No. 123062	REV # 1
DRAWING No. 123062-CMP1	

M:\2023\123062\CAD\Civil\123062-CMP1.dwg, CMP1, Sep 12, 2024, 7:11pm, upgood

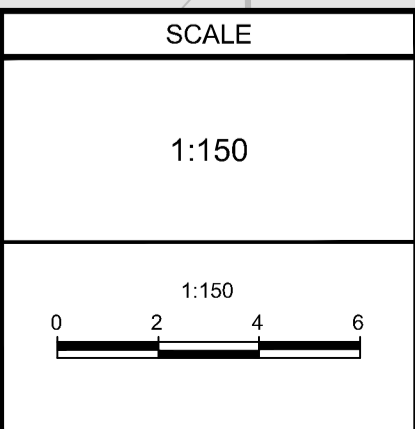


- CONSTRUCTION MANAGEMENT PLAN NOTES:**
- ARGYLE AVENUE IS A ONE WAY STREET WITH A SINGLE EASTBOUND TRAFFIC LANE AND ON A STREET PARKING AISLE. BUILDING SERVICES CONSTRUCTION WORK TO BE CONDUCTED IN TWO STAGES (STAGE 1 AND STAGES 2a AND 2b). BOTH STAGES WILL REQUIRE SECTIONS OF ON-STREET PARKING BEING RESTRICTED DURING CONSTRUCTION.
  - STAGE 1 AND STAGE 2a CONSISTS OF RESTRICTING THE STREET PARKING IN FRONT OF THE DEVELOPMENT, CLOSING THE EASTBOUND LANE, AND UTILIZING THE PARKING AISLE FOR EASTBOUND TRAFFIC. DURING THESE STAGES THE BUILDING'S WATER, SANITARY, AND STORM SERVICES WILL BE INSTALLED. REFER TO 123062-CMP1 FOR STAGE 1 AND 2a DETAILS.
  - THE SOUTHERN PEDESTRIAN SIDEWALK IS TO BE CLOSED AND FOOT TRAFFIC TO BE REDIRECTED TO THE NORTHERN ARGYLE SIDEWALK AT BANK STREET AND O'CONNOR STREET.
  - STAGE 2b CONSISTS OF RESTRICTING ON-STREET PARKING FOR THE REMAINING WATER SERVICE INSTALLATION AND OPENING THE EASTBOUND LANE TO TRAFFIC.
  - REFER TO 123062-CMP3 FOR TEMPORARY ROAD CLOSURE DETAILS.
  - A DETAILED CONSTRUCTION MANAGEMENT PLAN TO BE PREPARED AND PROVIDED BY THE CONTRACTOR, ONCE ONE IS RETAINED.

**NOTE:**  
THE POSITION OF ALL POLE LINES, CONDUITS, WATERMANS, SEWERS AND OTHER UNDERGROUND AND OVERGROUND UTILITIES AND STRUCTURES IS NOT NECESSARILY SHOWN ON THE CONTRACT DRAWINGS, AND WHERE SHOWN, THE ACCURACY OF THE POSITION OF SUCH UTILITIES AND STRUCTURES IS NOT GUARANTEED. BEFORE STARTING WORK, DETERMINE THE EXACT LOCATION OF ALL SUCH UTILITIES AND STRUCTURES AND ASSUME ALL LIABILITY FOR DAMAGE TO THEM.

**NOT FOR CONSTRUCTION**

No.	REVISION	DATE	BY
1.	ISSUED FOR ZBA / SPC SUBMISSION	SEP 13, 2024	GJM

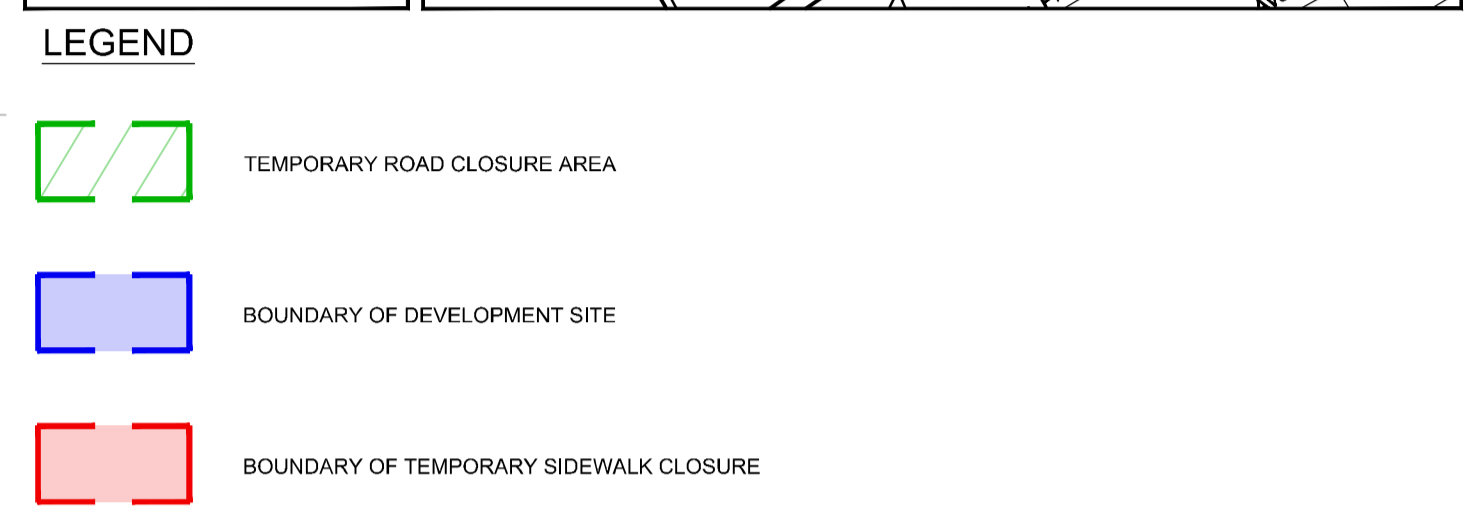
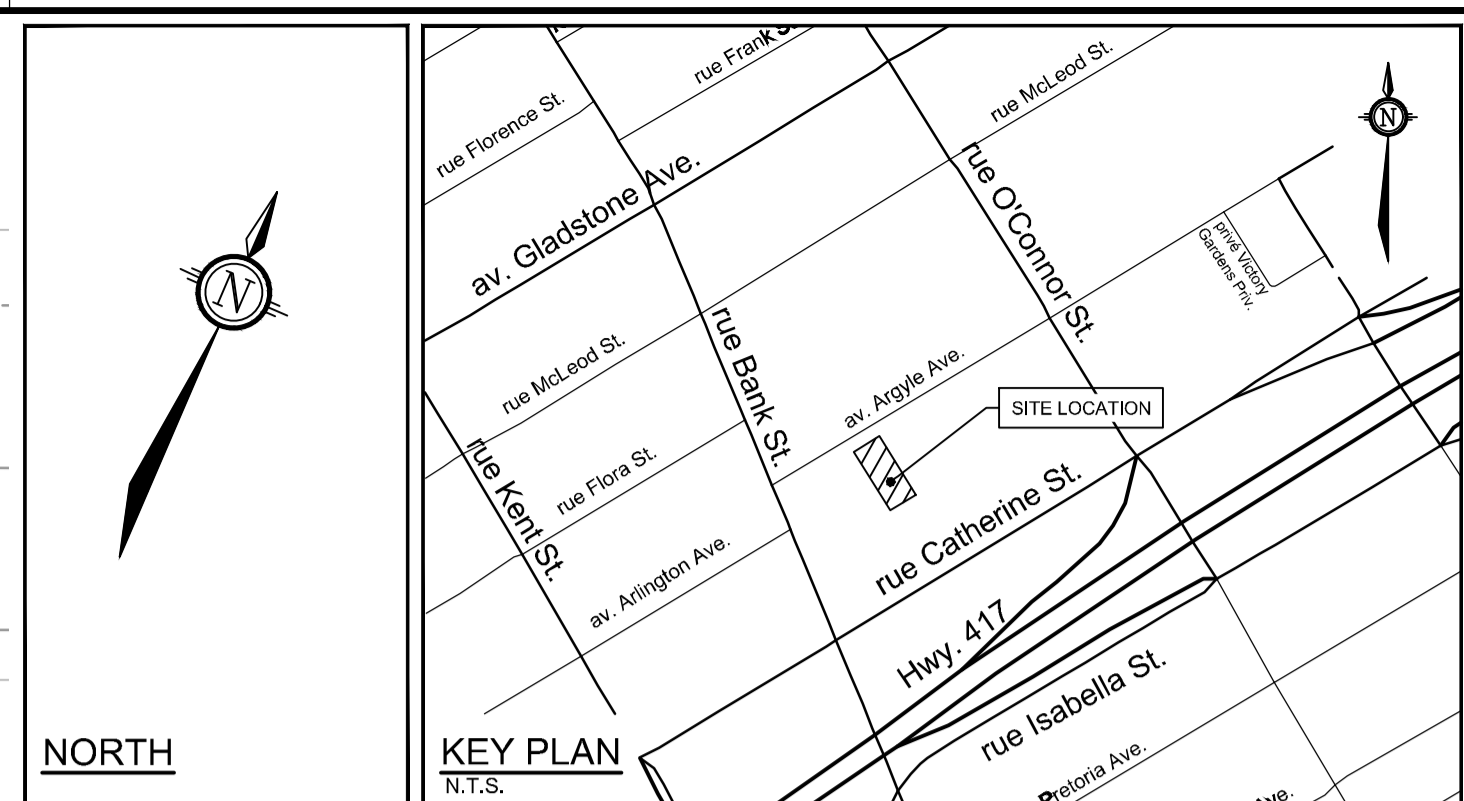
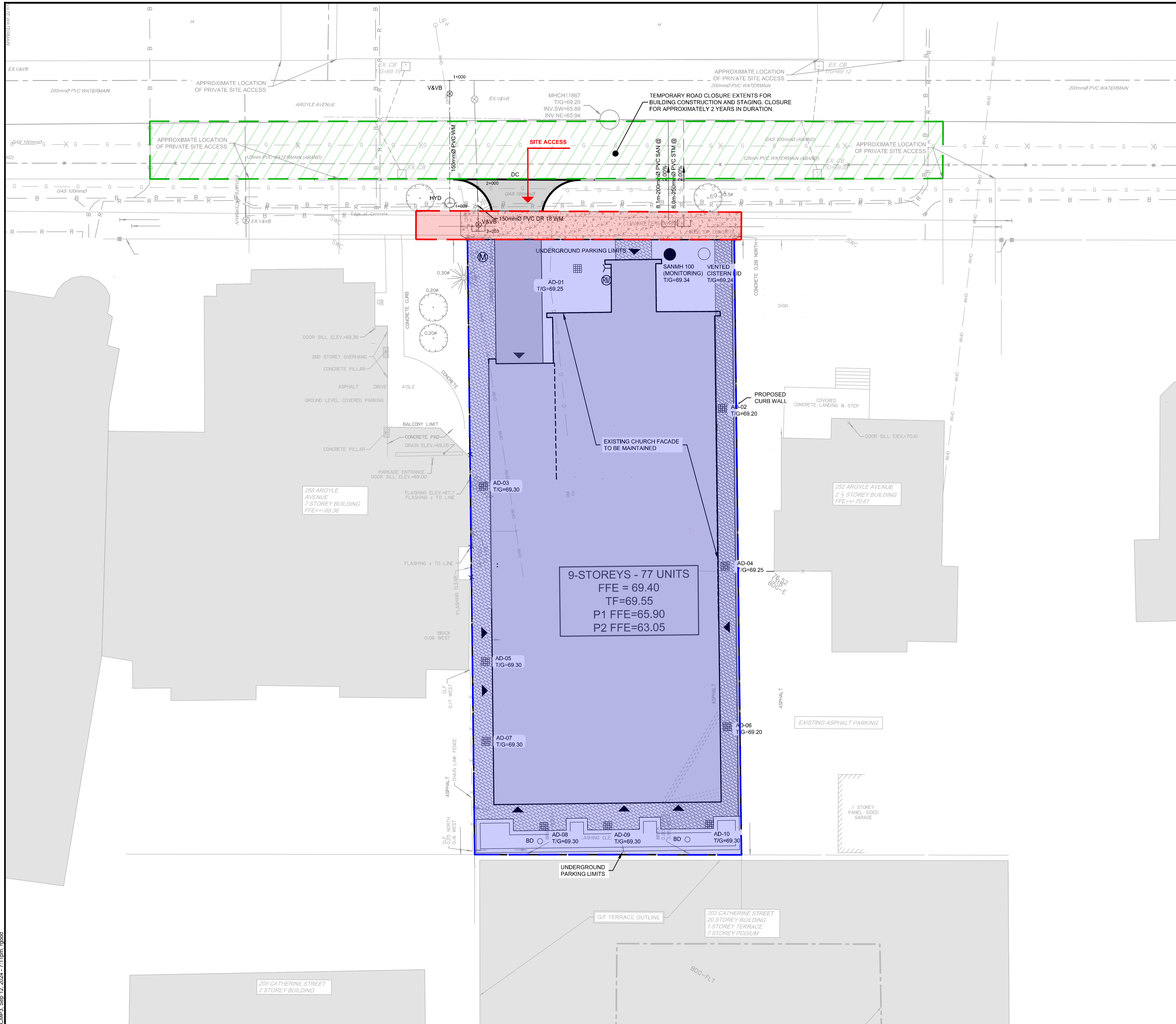


DESIGN	FOR REVIEW ONLY
RJG	
CHECKED	
ARM	
DRAWN	
RJG	
CHECKED	
ARM	
APPROVED	
GJM	

**NOVATECH**  
Engineers, Planners & Landscape Architects  
Suite 200, 240 Michael Cowpland Drive  
Ottawa, Ontario, Canada K2M 1P6  
Telephone (613) 254-9643  
Facsimile (613) 254-5867  
Website www.novatech-eng.com

LOCATION CITY OF OTTAWA 254 ARGYLE AVENUE	
DRAWING NAME <b>PRELIMINARY CONSTRUCTION MANAGEMENT PLAN 2</b>	
PROJECT No. 123062	REV # 1
DRAWING No. 123062-CMP2	

M:\2023\123062\CAD\Civil\123062-CMP2.dwg, CMP2, Sep 12, 2024, 7:11pm, rgsod

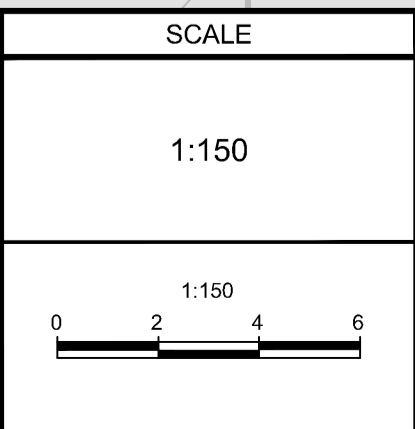


- CONSTRUCTION MANAGEMENT PLAN NOTES:**
1. ARGYLE AVENUE IS A ONE WAY STREET WITH A SINGLE EASTBOUND TRAFFIC LANE AND ON A STREET PARKING AISLE. BUILDING SERVICES CONSTRUCTION WORK TO BE CONDUCTED IN TWO STAGES (STAGE 1 AND STAGES 2a AND 2b). BOTH STAGES WILL REQUIRE SECTIONS OF ON-STREET PARKING BEING RESTRICTED DURING CONSTRUCTION.
  2. STAGE 1 AND STAGE 2a CONSISTS OF RESTRICTING THE STREET PARKING IN FRONT OF THE DEVELOPMENT, CLOSING THE EASTBOUND LANE, AND UTILIZING THE PARKING AISLE FOR EASTBOUND TRAFFIC. DURING THESE STAGES THE BUILDING'S WATER, SANITARY, AND STORM SERVICES WILL BE INSTALLED. REFER TO 123062-CMP1 FOR STAGE 1 AND 2a DETAILS.
  3. THE SOUTHERN PEDESTRIAN SIDEWALK IS TO BE CLOSED AND FOOT TRAFFIC TO BE REDIRECTED TO THE NORTHERN ARGYLE SIDEWALK AT BANK STREET AND O'CONNOR STREET.
  4. STAGE 2b CONSISTS OF RESTRICTING ON-STREET PARKING FOR THE REMAINING WATER SERVICE INSTALLATION AND OPENING THE EASTBOUND LANE TO TRAFFIC. REFER TO 123062-CMP2 FOR STAGE 2b DETAILS.
  5. TEMPORARY ROAD CLOSURE FOR APPROXIMATELY 2 YEAR DURATION DURING CONSTRUCTION FOR STAGING AND BUILDING CONSTRUCTION. ALL NEIGHBORING PRIVATE ACCESSES TO BE MAINTAINED DURING TEMPORARY ROAD CLOSURE.
  6. A DETAILED CONSTRUCTION MANAGEMENT PLAN TO BE PREPARED AND PROVIDED BY THE CONTRACTOR, ONCE ONE IS RETAINED.

**NOTE:**  
 THE POSITION OF ALL POLE LINES, CONDUITS, WATERMANS, SEWERS AND OTHER UNDERGROUND AND OVERGROUND UTILITIES AND STRUCTURES IS NOT NECESSARILY SHOWN ON THE CONTRACT DRAWINGS, AND WHERE SHOWN, THE ACCURACY OF THE POSITION OF SUCH UTILITIES AND STRUCTURES IS NOT GUARANTEED. BEFORE STARTING WORK, DETERMINE THE EXACT LOCATION OF ALL SUCH UTILITIES AND STRUCTURES AND ASSUME ALL LIABILITY FOR DAMAGE TO THEM.

NOT FOR CONSTRUCTION

No.	REVISION	DATE	BY
1.	ISSUED FOR ZBA / SPC SUBMISSION	SEP 13, 2024	GJM



DESIGN		FOR REVIEW ONLY	
CHECKED	R/JG		
DRAWN	ARM		
CHECKED	R/JG		
APPROVED	ARM		
	GJM		

NOVATECH

Engineers, Planners & Landscape Architects  
 Suite 200, 240 Michael Cowpland Drive  
 Ottawa, Ontario, Canada K2M 1P6

Telephone (613) 254-9643  
 Facsimile (613) 254-5867  
 Website www.novatech-eng.com

LOCATION CITY OF OTTAWA 254 ARGYLE AVENUE		PROJECT No. 123062
DRAWING NAME <b>PRELIMINARY CONSTRUCTION MANAGEMENT PLAN 3</b>		REV REV # 1
		DRAWING No. 123062-CMP3

M:\2023\123062\CAD\Civil\123062-CMP3.dwg, CMP3, Sep 12, 2024, 7:11pm, upod