

APPROVED

By Kersten Nitsche at 2:12 pm, Jun 11, 2024

Kersten Nitsche

**KERSTEN NITSCHÉ, MCIP RPP
MANAGER (A), DEVELOPMENT REVIEW WEST
PLANNING, DEVELOPMENT AND BUILDING SERVICES
DEPARTMENT, CITY OF OTTAWA**

1
L2.01 PLANTING DETAILS NTS

500 SERIES

MBR-0500-00003
Legacy #MBR500-S

MATERIALS: All parts of the bike rack are made from H.S. steel tube.

FINISH: All steel components are protected with E-Coat rust proofing. The Maglin Powdercoat System provides a durable finish on all metal surfaces.

INSTALLATION: The bike rack is delivered pre-assembled. It is available with either a surface mount or direct burial installation option.

TO SPECIFY: Select MBR-0500-00003
Choose:
- Powdercoat Color

HEIGHT: 35" (89.9cm) LENGTH: 19.25" (48.9cm) WEIGHT: 13.27 lbs (6.0kg)

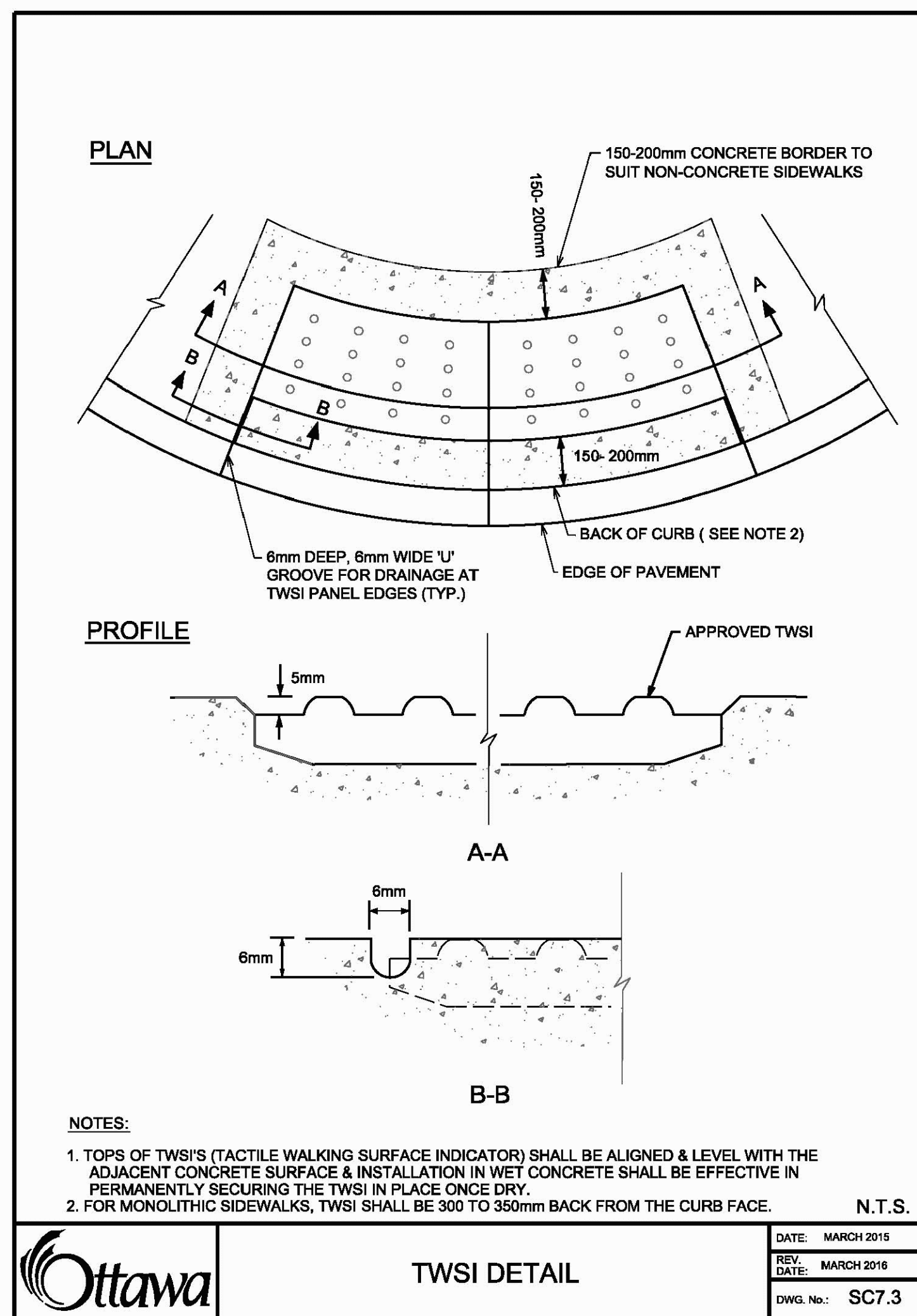
MAGLIN
Site Furniture

T 800 714 6506
F 877 262 8493
www.maglin.com
sales@maglin.com

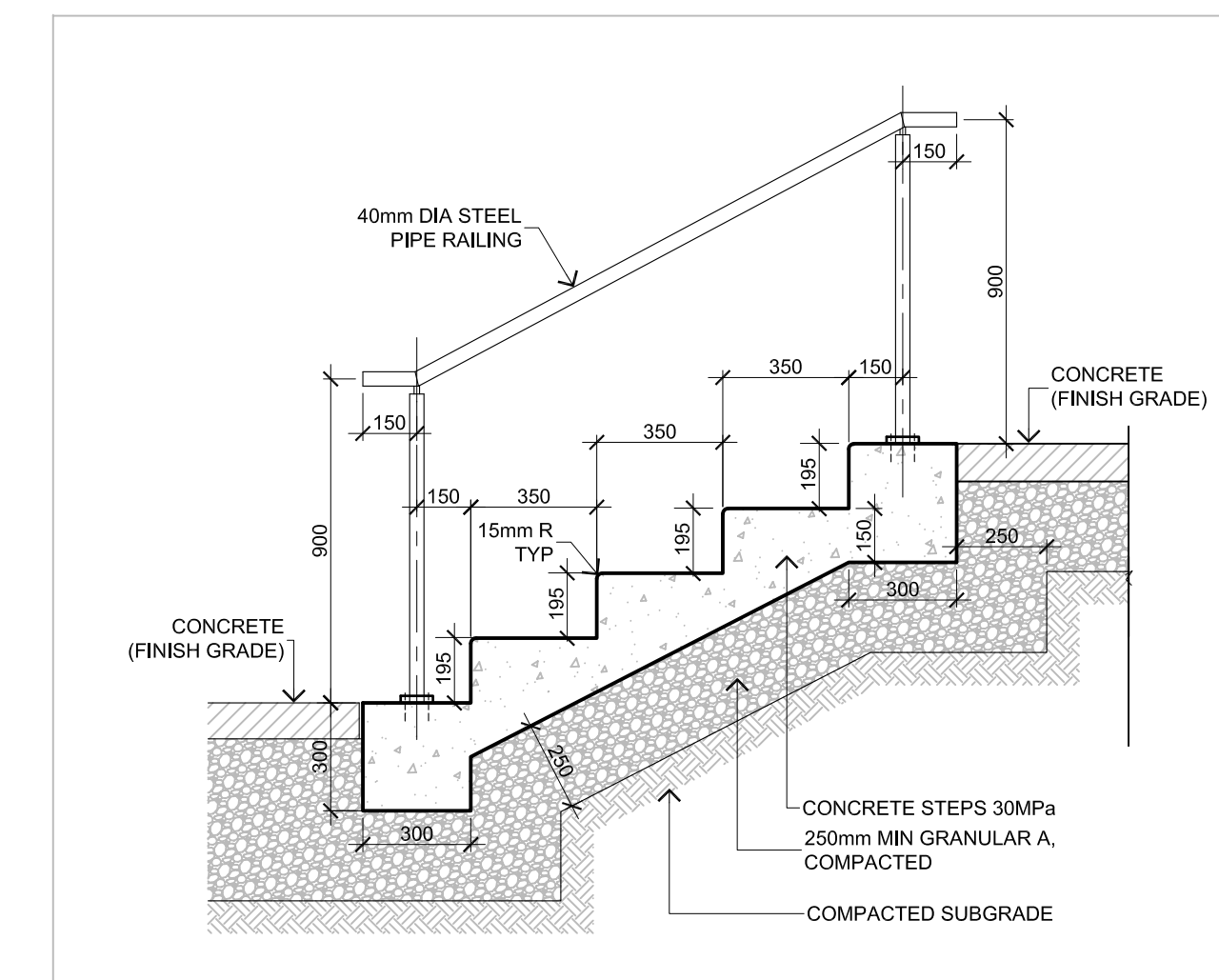
All drawings, specifications, design and details on this page remain the property of Maglin Site Furniture Inc. and may not be used without Maglin authorization.
Details and specifications may vary due to continuing improvements of our products.

INSTALLATION: SURFACE MOUNT
FINISH: TITANIUM (GLOSS) POWDERCOAT

2
L2.01 BICYCLE RACK NTS



3
L2.01 TACTILE WALKING SURFACE INDICATORS (TWSI) NTS



- STEEL REINFORCING FOR CONCRETE SHALL BE DESIGNED AND APPROVED BY STRUCTURAL.
- FOUNDATION FOR CONCRETE SHALL BE REVIEWED AND APPROVED BY SOILS ENGINEER.
- CONTRACTOR SHALL PROVIDE SHOP DRAWINGS FOR STEEL RAILINGS.

4
L2.01 SECTION A - a
CONCRETE STEPS / RAILING SECTION NTS

FOR APPROVAL ONLY

no.	date	revision
3.	FEB.29/24	PER CITY COMMENTS (2)
2.	NOV.28/23	PER CITY COMMENTS (1)
1.	AUG.31/23	ISSUE FOR SITE PLAN APPROVAL

no.	date	revision
North Arrow		Stamp

Contractor shall check and verify all dimensions on site and report all errors and/or omissions to the Consultant.
Work to be done in accordance with all applicable codes and by-laws.
Do not scale Drawing.
This Drawing shall not be used for construction until signed by the Consultant.
Copyright reserved. This Drawing is the exclusive property of Levstek Consultants Inc. and shall not be used without consent.

Consultant
LEVSTEK CONSULTANTS
LANDSCAPE ARCHITECTS
5871 Hugh Crescent - Ottawa - Ontario - K0A 2W6
613 - 826 - 6518

Client
woodvale
COMMERCIAL OUTDOOR

Project
**WOODVALE PENTECOSTAL
CHURCH ADDITION
PHASE 2**
205 GREENBANK ROAD

Drawing Title
LANDSCAPE DETAILS

Drawn		Drawing No.
Scale	Project No.	L2.01
AS NOTED	1199	