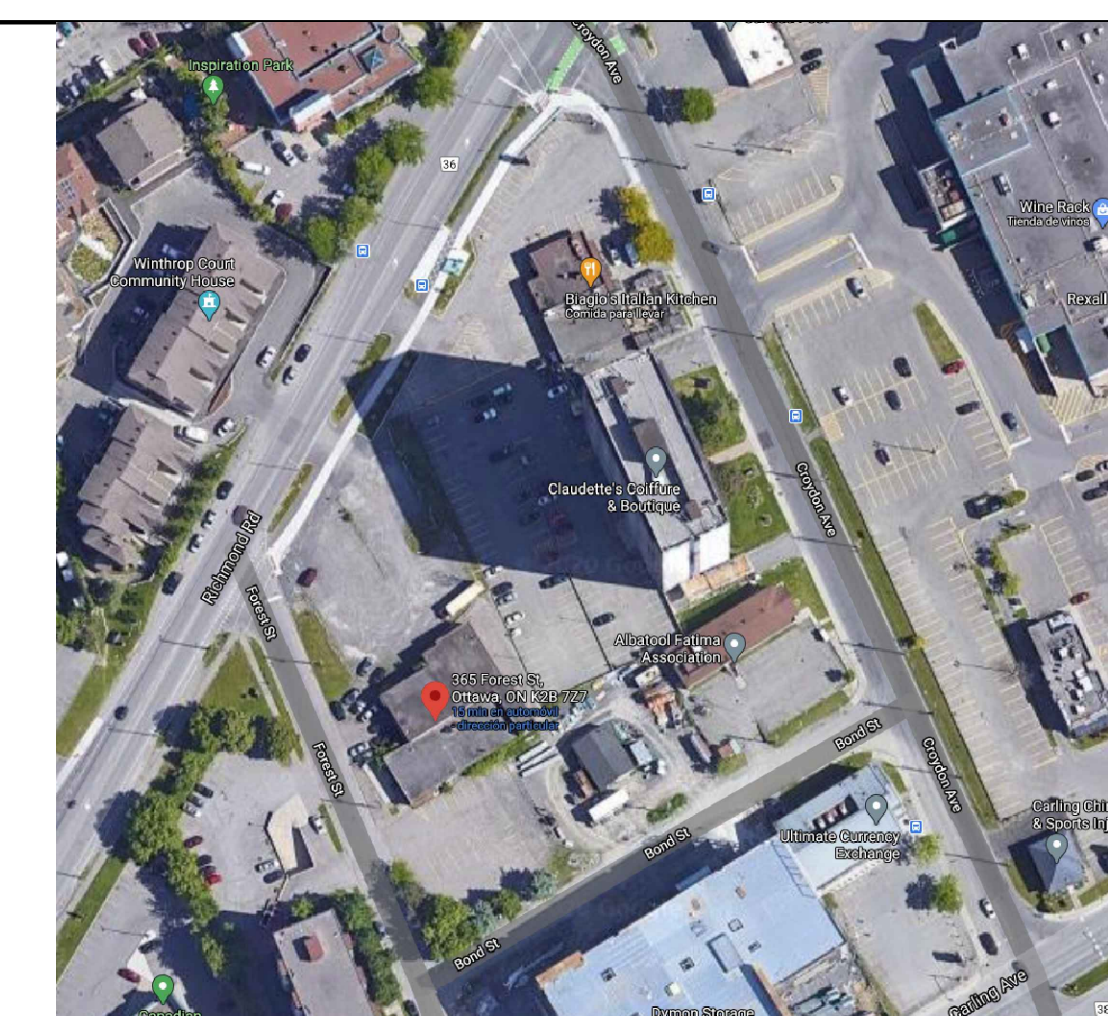


APPROVED
By Kersten Nitsche at 4:24 pm, Apr 18, 2024

Kersten Nitsche
KERSTEN NITSCHÉ, MCIP RPP
MANAGER (A), DEVELOPMENT REVIEW WEST
PLANNING, DEVELOPMENT AND BUILDING SERVICES
DEPARTMENT, CITY OF OTTAWA



THIS DRAWING, OR PARTS THEREOF, MAY NOT BE REPRODUCED OR USED IN ANY FORM, BY ANY METHOD, FOR ANY PURPOSE, WITHOUT THE WRITTEN PERMISSION OF QUADRANT ENGINEERING.

THIS DRAWING IS TO BE READ IN CONJUNCTION WITH THE SPECIFICATION. WHERE CONFLICT ARISES THE MORE STRINGENT OF THE TWO SHALL APPLY.

COPYRIGHT © 2022 QUADRANT ENGINEERING.

THE ELECTRICAL CONTRACT DOCUMENTS ARE THE PROPERTY OF QUADRANT ENGINEERING (QE).

THE CONTRACTOR SHALL OBTAIN A FULL SET OF ALL CONSULTANTS' DESIGN DOCUMENTS PRIOR TO STARTING WORK.

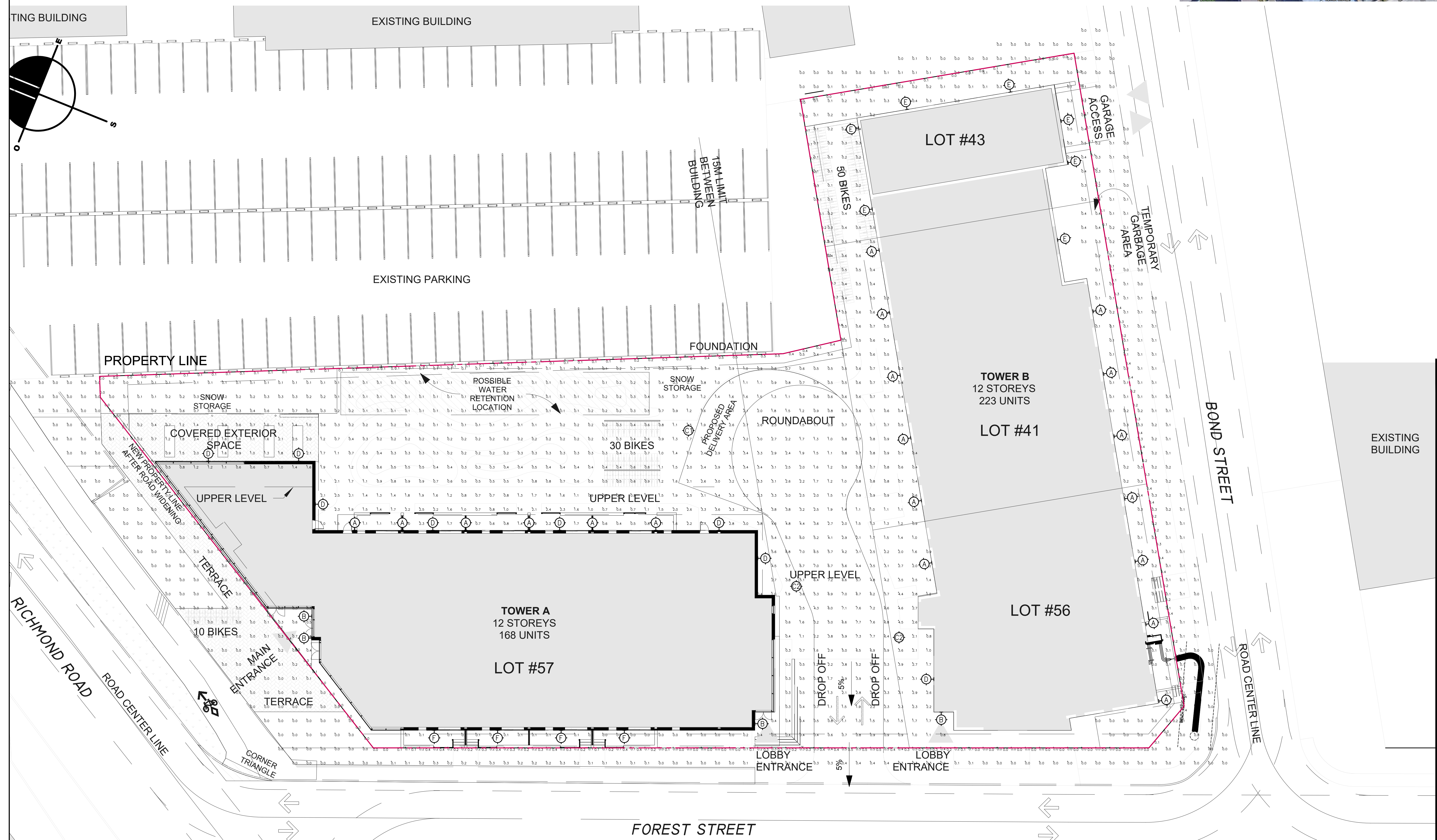
QE BEARS NO RESPONSIBILITY FOR INTERPRETATIONS OF THESE DOCUMENTS BY OTHERS.

UPON WRITTEN APPLICATION QEL WILL PROVIDE WRITTEN CLARIFICATION REGARDING THE INTENT OF THE CONTRACT DOCUMENTS.

QE REVIEW OF SHOP DRAWINGS SUBMITTED BY THE CONTRACTOR IS FOR DESIGN CONFORMANCE ONLY.

DRAWINGS ARE NOT TO BE SCALED FOR CONSTRUCTION. CONTRACTOR TO VERIFY ALL CONDITIONS AND DIMENSIONS, ON SITE, REQUIRED TO PERFORM THE WORK AND REPORT ANY DISCREPANCIES WITH THE CONTRACT DOCUMENTS TO THE DESIGN TEAM BEFORE COMMENCING WORK.

20Q0086E



NO.	REVISION	DATE	PL BY
7	ISSUED FOR SITE LIGHTING COORDINATION	23 JUN 2022	
6	ISSUED FOR COORDINATION	02 JUN 2022	
5	ISSUED FOR SITE PLAN COORDINATION	22 OCT 2021	
3,4	NOT USED	-	
2	ISSUED FOR COORDINATION	29 JAN 2021	
1	ISSUED FOR DESIGN BRIEF	21 DEC 2020	

365 FOREST ST
TOWER A AND B

QUADRANT
MECHANICAL AND ELECTRICAL ENGINEERING
210 COLONNADE ROAD, UNIT 201, NEPEAN, ONT., K2E 7L5
TEL. (613) 567-1487 FAX. (613) 567-1493
e-mail: mail@quadrantengineering.ca

CURRENT DATE	
SCALE	1:200
DRAWN	BML
DESIGNED	BML
CHECKED	MC
PROJECT	QE 20-0086
DRAWING NUMBER	E-002

ELECTRICAL SITE PLAN
C/W PHOTOMETRIC

APPROVED
By Kersten Nitsche at 4:29 pm, Apr 18, 2024



KERSTEN NITSCHÉ, MCIP RPP
MANAGER (A), DEVELOPMENT REVIEW WEST
PLANNING, DEVELOPMENT AND BUILDING SERVICES
DEPARTMENT, CITY OF OTTAWA

Calculation Summary							
Label	CalcType	Units	Avg	Max	Min	Avg/Min	Max/Min
PROPERTY LINE	ILLUMINANCE	Fc	0.16	0.5	0.0	N.A.	N.A.
SITE_Planar	ILLUMINANCE	Fc	0.83	7.7	0.0	N.A.	N.A.

365 FOREST STREET - LIGHT FIXTURE SCHEDULE [OR APPROVED EQUIVALENT]							
ALL LIGHTING FIXTURE COMPLETE WITH LAMP ALL RECESSED FIXTURES AND/OR JUNCTION BOXES PENETRATING FIRE RATED ENCLOSURES TO BE FIRE RATED EQUAL TO THE ASSEMBLY ENCLOSURE.							
SYM	QTY	MTD HEIGHT	IMAGE	LAMPS WATTS KELVIN	VOLT	SPECIFICATIONS:	
A	19	7 FT		9.5W 3000K 850 LM	120V	1.) LOCATION: 2.) MOUNTING: 3.) DESCRIPTION: 4.) DIMENSIONS: 5.) MODEL: 6.) CAT#:	1.) BUILDING PERIMETER 2.) SURFACE MOUNTED 3.) WALL SCOFF 4.) W: 7 3/4" x H: 5 5/8" x D: 2 1/2" 5.) KUZCO - DYNAMO SERIES 6.) EW37203-BK
B	4	7 FT		9.2W 3000K 800 LM	120V	1.) LOCATION: 2.) MOUNTING: 3.) DESCRIPTION: 4.) DIMENSIONS: 5.) MODEL: 6.) CAT#:	1.) BUILDING PERIMETER 2.) SURFACE MOUNTED 3.) WALL SCOFF 4.) [FIXTURE] W: 2 1/2" x H: 14 5/8" x D: 3 7/8" 4.) [BRACKET] W: 4 1/2" x H: 18" x D: 1/2" 5.) KUZCO - COPENHAGEN 6.) EW48212-KB
C1	1			70W 3000K LM 7099	120V	1.) LOCATION: 2.) MOUNTING: 3.) DESCRIPTION: 4.) DIMENSIONS: 5.) MODEL: 6.) CAT#:	1.) DRIVEWAY 2.) POST TOP 3.) PARKING LOT POST TOP 4.) TOP DIA: 23" x H: 21.4"5. - WEIGHT: 33.8 LBS 5.) CREE 6.) ARE-EDR-5M-xx-04-E-UL-xx-525-xxxx-30K
C2	2			103W 3000K LM #	120V	1.) LOCATION: 2.) MOUNTING: 3.) DESCRIPTION: 4.) DIMENSIONS: 5.) MODEL: 6.) CAT#:	1.) DRIVEWAY 2.) POST TOP 3.) PARKING LOT POST TOP 4.) TOP DIA: 23" x H: 21.4"5. - WEIGHT: 35.2 LBS 5.) CREE 6.) ARE-EDR-3MB-xx-06-E-UL-xx-525-xxxx-30K
D	8	9 FT		13.6W	120V	1.) LOCATION: 2.) MOUNTING: 3.) DESCRIPTION: 4.) DIMENSIONS: 5.) MODEL: 6.) CAT#:	1.) BUILDING PERIMETER 2.) SURFACE MOUNTED 3.) WALL PACK 4.) W: 9 3/8" x H: 6" x D: 5 1/4" - WEIGHT: 2.41 LBS 5.) CREE - C-LITE 6.) C-WP-A-RDC-1L-30K-DB
E	7	9 FT		10.2W 3000K LM 800	120V	1.) LOCATION: 2.) MOUNTING: 3.) DESCRIPTION: 4.) DIMENSIONS: 5.) MODEL: 6.) CAT#:	1.) BUILDING PERIMETER 2.) SURFACE MOUNTED 3.) WALL SCOFF 4.) W: 10" x H: 5 5/8" x D: 3 7/8" 5.) KUZCO - OLYMPUS SERIES 6.) EW36804-BK
F	4	7 FT		14.3W 3000K LM 611	120V	1.) LOCATION: 2.) MOUNTING: 3.) DESCRIPTION: 4.) DIMENSIONS: 5.) MODEL: 6.) CAT#:	1.) BUILDING PERIMETER 2.) SURFACE MOUNTED 3.) WALL SCOFF 4.) W: 4 1/2" x H: 18" x D: 3 1/4" 5.) KUZCO - NEVIS SERIES 6.) EW36804-BK
C1 & C2						1.) LOCATION: 2.) MOUNTING: 3.) DESCRIPTION: 4.) DIMENSIONS: 5.) MODEL: 6.) CAT#:	1.) DRIVEWAY 2.) CONCRETE BASE C/W ALL ACCESSORIES & MOUNTINGS 3.) FOR POST TOP LIGHT FIXTURES 4.) 12'-0" HIGH LIGHT POLE 5.) # 6.) #
						1.) LOCATION: 2.) MOUNTING: 3.) DESCRIPTION: 4.) DIMENSIONS: 5.) MODEL: 6.) CAT#:	1.) 2.) 3.) 4.) 5.) 6.)

THIS DRAWING, OR PARTS THEREOF, MAY NOT BE REPRODUCED OR USED IN ANY FORM, BY ANY METHOD, FOR ANY PURPOSE, WITHOUT THE WRITTEN PERMISSION OF QUADRANT ENGINEERING.

THIS DRAWING IS TO BE READ IN CONJUNCTION WITH THE SPECIFICATION. WHERE CONFLICT ARISES THE MORE STRINGENT OF THE TWO SHALL APPLY.

COPYRIGHT © 2022 QUADRANT ENGINEERING.

THE ELECTRICAL CONTRACT DOCUMENTS ARE THE PROPERTY OF QUADRANT ENGINEERING (QE)

THE CONTRACTOR SHALL OBTAIN A FULL SET OF ALL CONSULTANTS' DESIGN DOCUMENTS PRIOR TO STARTING WORK.

QE BEARS NO RESPONSIBILITY FOR INTERPRETATIONS OF THESE DOCUMENTS BY OTHERS.

UPON WRITTEN APPLICATION QEL WILL PROVIDE WRITTEN CLARIFICATION REGARDING THE INTENT OF THE CONTRACT DOCUMENTS.

QE REVIEW OF SHOP DRAWINGS SUBMITTED BY THE CONTRACTOR IS FOR DESIGN CONFORMANCE ONLY.

DRAWINGS ARE NOT TO BE SCALED FOR CONSTRUCTION. CONTRACTOR TO VERIFY ALL CONDITIONS AND DIMENSIONS, ON SITE, REQUIRED TO PERFORM THE WORK AND REPORT ANY DISCREPANCIES WITH THE CONTRACT DOCUMENTS TO THE DESIGN TEAM BEFORE COMMENCING WORK.

20Q0086E

7	ISSUED FOR SITE LIGHTING COORDINATION	23 JUN 2022	
6	ISSUED FOR COORDINATION	02 JUN 2022	
5	ISSUED FOR SITE PLAN COORDINATION	22 OCT 2021	
3,4	NOT USED	-	
2	ISSUED FOR COORDINATION	29 JAN 2021	
1	ISSUED FOR DESIGN BRIEF	21 DEC 2020	
NO.	REVISION	DATE	PL BY

365 FOREST ST
TOWER A AND B

QUADRANT
EST. 1995
MECHANICAL AND ELECTRICAL ENGINEERING
210 COLONNADE ROAD, UNIT 201, NEPEAN, ONT., K2E 7L5
TEL. (613) 567-1487 FAX. (613) 567-1493
e-mail: mail@quadrantengineering.ca

CURRENT DATE	
SCALE	1:200
DRAWN	BML
DESIGNED	BML
CHECKED	MC
PROJECT	QE 20-0086
DRAWING NUMBER	E-005

SITE PLAN DETAILS &
FIXTURE SCHEDULE