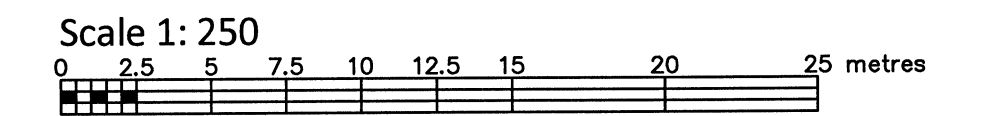


PART OF LOT 31
CONCESSION 2 (RIDEAU FRONT)
GEOGRAPHIC TOWNSHIP OF NEPEAN
CITY OF OTTAWA

FARLEY, SMITH & DENIS SURVEYING LTD. 2021



Metric Note
Distances on this plan are in metres and can be converted to feet by dividing by 0.3048.

Bearing Note
Bearings hereon are grid bearings derived from the Can-Net Real Time Network and are referred to the Central Meridian of MTM Zone 9 (76°30' West Longitude) Nad-83 (Original).

For bearing comparisons, a rotation of 0°45'10" counter-clockwise was applied to bearings on P1, P2 & P4.

Elevation Notes
1. Elevations shown are geodetic and are referred to Geodetic Datum CGVD-1928 -1978. (Monument No. 19580005)
2. It is the responsibility of the user of this information to verify that the job benchmark has not been altered or disturbed and that its relative elevation and description agrees with the information shown on this drawing.

Utility Notes
1. This drawing cannot be accepted as acknowledging all of the utilities and it will be the responsibility of the user to contact the respective utility authorities for confirmation.
2. Only visible surface utilities were located.
3. Sanitary and storm sewer grades and inverts were derived from: Field measurement.
4. A field location of underground plant by the pertinent utility authority is mandatory before any work involving breaking ground, probing, excavating etc.

Notes & Legend table with symbols for Survey Monument Planted, Survey Monument Found, Standard Iron Bar, Short Standard Iron Bar, Witness, Measured, Plan 4R-1796, Plan by (1287) dated June 27, 1995, Plan 5R-5723, Plan by (1692) dated April 29, 2004, Maintenance Hole (Storm), Maintenance Hole (Sanitary), Maintenance Hole (Traffic), Valve Chamber (Watermain), Underground Storm Sewer, Underground Sanitary Sewer, Underground Power, Underground Gas, Overhead Wires, Utility Pole, Anchor, Light Standard, Catch Basin, Fire Hydrant, Water Valve, Traffic Light, Bollard, Air Conditioner, Gas Valve, Chain Link Fence, Invert, Top of Grate, Top of Foundation, Centreline, Location of Elevations, Top of Concrete Curb Elevation, Property Line, Deciduous Tree, Confersus Tree.

ASSOCIATION OF ONTARIO LAND SURVEYORS PLAN SUBMISSION FORM V-19005. THIS PLAN IS NOT VALID UNLESS IT IS AN EMBOSSED ORIGINAL COPY ISSUED BY THE SURVEYOR in accordance with Regulation 1026, Section 29 (3).

WARNING NO PERSON MAY COPY, REPRODUCE, DISTRIBUTE OR ALTER THIS PLAN IN WHOLE OR IN PART WITHOUT THE WRITTEN PERMISSION OF FARLEY, SMITH & DENIS SURVEYING LTD. © FARLEY, SMITH & DENIS SURVEYING LTD., 2021. Surveyor's Certificate: I certify that: 1. This survey and plan are correct and in accordance with the Surveys Act, the Surveyors Act and the Regulations made under them. 2. The survey was completed on the 5th day of November, 2021. Date: May 11/21. Jamie Leslie, Ontario Land Surveyor. FARLEY, SMITH & DENIS SURVEYING LTD. ONTARIO LAND SURVEYORS CANADA LAND SURVEYORS. Unit 275, 30 COLONNADE ROAD, OTTAWA, ONTARIO K2E 7J6. TEL: (613) 727-8226 E-mail: fdsurveys@bellnet.ca. FILE No.: 583-21

