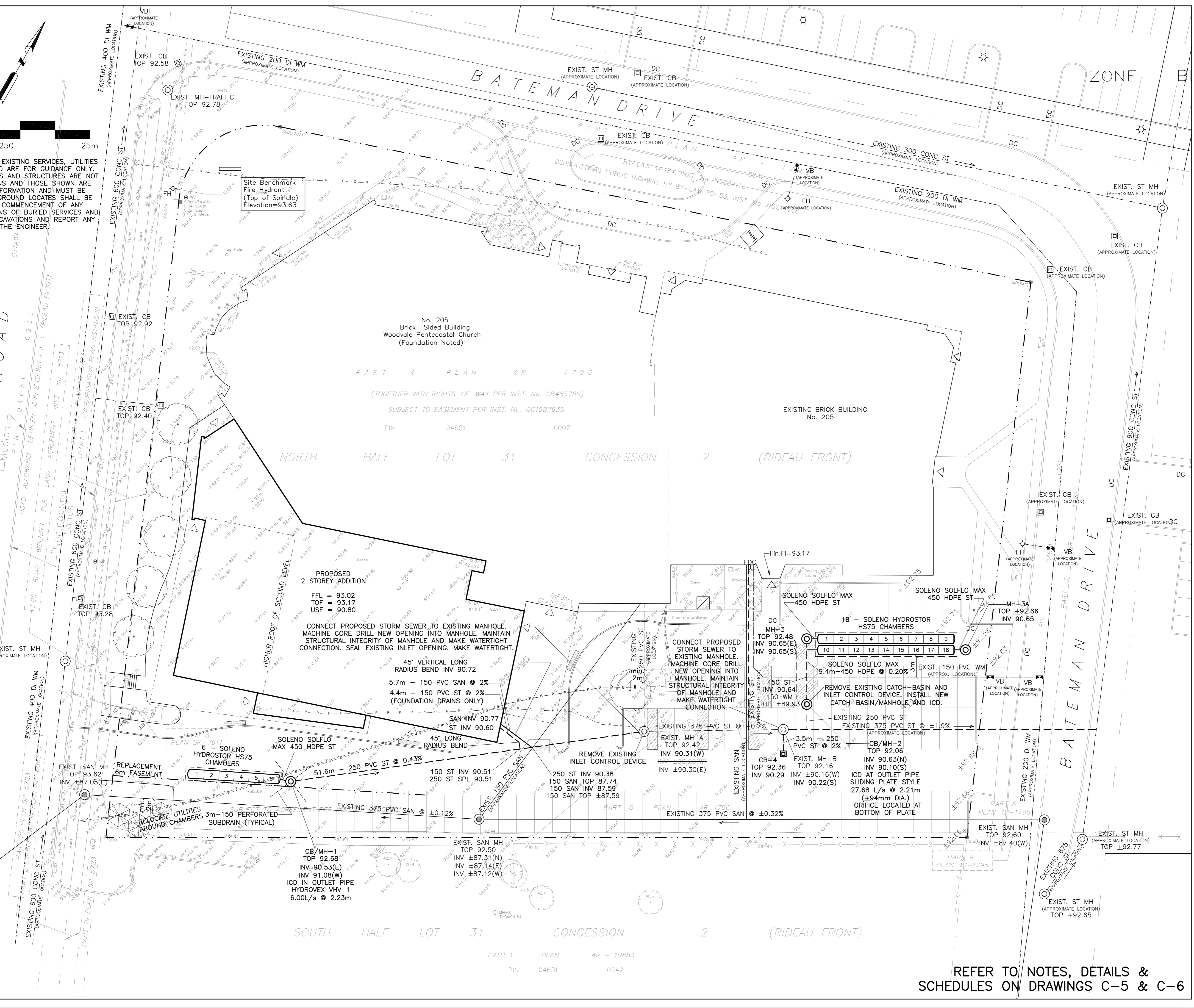


SIZE, DEPTH AND LOCATION OF EXISTING SERVICES, UTILITIES AND STRUCTURES AS INDICATED ARE FOR GUIDANCE ONLY. ALL EXISTING SERVICES, UTILITIES AND STRUCTURES ARE NOT NECESSARILY SHOWN ON PLANS AND THOSE SHOWN ARE DERIVED FROM AVAILABLE INFORMATION AND MUST BE CONFIRMED ON SITE. UNDERGROUND LOCATES SHALL BE CONDUCTED PRIOR TO THE COMMENCEMENT OF ANY EXCAVATION. CONFIRM LOCATIONS OF BURIED SERVICES AND UTILITIES BY CAREFUL TEST EXCAVATIONS AND REPORT ANY DIFFERENCES TO THE ENGINEER.

GREENBANK ROAD

BATEMAN DRIVE

ZONE I



Site Benchmark  
Fire Hydrant  
Elevation=93.63

No. 205  
Brick Sided Building  
Woodvale Pentecostal Church  
(Foundation Noted)

PART 4 PLAN 4R - 1796  
(TOGETHER WITH RIGHTS-OF-WAY PER INST. No. CR485759)  
SUBJECT TO EASEMENT PER INST. No. OC1987935  
PIN 04651 - 0007

NORTH HALF LOT 31 CONCESSION 2 (RIDEAU FRONT)

EXISTING BRICK BUILDING  
No. 205

PROPOSED  
2 STOREY ADDITION  
FFL = 93.02  
TOF = 93.17  
USF = 90.80

CONNECT PROPOSED STORM SEWER TO EXISTING MANHOLE. MACHINE CORE DRILL NEW OPENING INTO MANHOLE. MAINTAIN STRUCTURAL INTEGRITY OF MANHOLE AND MAKE WATERTIGHT CONNECTION. SEAL EXISTING INLET OPENING. MAKE WATERTIGHT.

45' VERTICAL LONG  
RADIUS BEND INV 90.72  
5.7m - 150 PVC SAN @ 2%  
4.4m - 150 PVC ST @ 2%  
(FOUNDATION DRAINS ONLY)

45' LONG  
RADIUS BEND  
SAN INV 90.77  
ST INV 90.60

8 - SOLENO  
HYDROSTOR HS75  
CHAMBERS

RELOCATE UTILITIES  
CHAMBERS 3m-150 PERFORATED  
SUBDRAIN (TYPICAL)

51.6m - 250 PVC ST @ 0.43%  
150 ST INV 90.51  
250 ST SPL 90.51

REMOVE EXISTING  
INLET CONTROL DEVICE  
250 ST INV 90.38  
150 SAN TOP 87.74  
150 SAN INV 87.59  
150 SAN TOP ±87.59

CONNECT PROPOSED  
STORM SEWER TO  
EXISTING MANHOLE.  
MACHINE CORE DRILL  
NEW OPENING INTO  
MANHOLE. MAINTAIN  
STRUCTURAL INTEGRITY  
OF MANHOLE AND  
MAKE WATERTIGHT  
CONNECTION.

MH-3  
TOP 92.48  
INV 90.65(E)  
INV 90.65(S)

SOLENO SOLFLO MAX  
9.4m-450 HDPE @ 0.20%  
EXIST. 150 PVC WM  
(APPROX. LOCATION)

REMOVE EXISTING CATCH-BASIN AND  
INLET CONTROL DEVICE. INSTALL NEW  
CATCH-BASIN/MANHOLE AND ICD.

EXISTING 250 PVC ST  
EXISTING 375 PVC ST @ ±1.9%  
(APPROXIMATE LOCATION)

CB/MH-2  
TOP 92.06  
INV 90.63(N)  
INV 90.10(S)

ICD AT OUTLET PIPE  
SLIDING PLATE STYLE  
27.68 L/s @ 2.21m  
(±94mm DIA.)  
ORIFICE LOCATED AT  
BOTTOM OF PLATE

3.5m - 250  
PVC SF @ 2%  
EXIST. MH-B  
TOP 92.16  
INV ±90.16(W)  
INV 90.22(S)

EXISTING SAN  
(APPROXIMATE LOCATION)

EXISTING 375 PVC SAN @ ±0.32%

EXIST. SAN MH  
TOP 92.50  
INV ±87.31(N)  
INV ±87.14(E)  
INV ±87.12(W)

EXIST. SAN MH  
TOP 92.60  
INV ±87.40(W)

EXIST. ST MH  
TOP ±92.77

EXIST. ST MH  
(APPROXIMATE LOCATION)  
TOP ±92.65

SOUTH HALF LOT 31 CONCESSION 2 (RIDEAU FRONT)

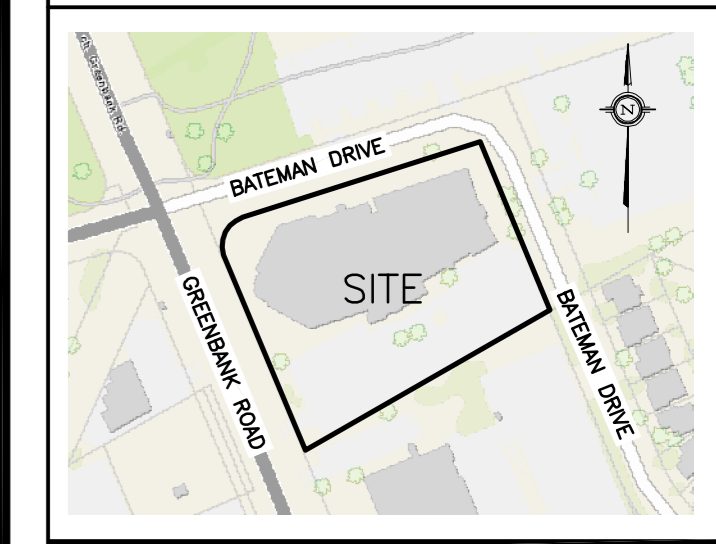
PART 1 PLAN 4R - 10883  
PIN 04651 - 0242

REFER TO NOTES, DETAILS &  
SCHEDULES ON DRAWINGS C-5 & C-6

**LEGEND**

- CB [Symbol] CATCH-BASIN
- MH [Symbol] STORM MANHOLE
- CB/MH [Symbol] CATCH-BASIN/MANHOLE
- MH [Symbol] SANITARY MANHOLE
- VC [Symbol] VALVE CHAMBER
- VB [Symbol] VALVE & VALVE BOX
- FH [Symbol] FIRE HYDRANT
- FDC [Symbol] FIRE DEPARTMENT CONNECTION
- SAN [Symbol] SANITARY SEWER
- ST [Symbol] STORM SEWER
- WS/WM [Symbol] WATER SERVICE/WATERMAIN
- SPL [Symbol] SPRINGLINE OF PIPE
- INV [Symbol] INVERT OF PIPE
- FFL [Symbol] FINISHED FLOOR ELEVATION
- TOF [Symbol] TOP OF FOUNDATION
- BFL [Symbol] BASEMENT FLOOR ELEVATION
- USF [Symbol] UNDERSIDE OF FOOTING
- - - - - PROPERTY LINE
- — — — — 150mm BARRIER CURB
- - - - - D.C. DEPRESSED CURB

**KEY PLAN**



No.	DATE	REVISION
8	APR 1-24	RE-ISSUED FOR APPROVAL
7	MAR 8-24	ISSUED FOR TENDER
6	MAR 5-24	RE-ISSUED FOR APPROVAL
5	JAN 2-24	RE-ISSUED FOR APPROVAL
4	DEC 4-23	RE-ISSUED FOR APPROVAL
3	AUG 31-23	ISSUED FOR APPROVAL
2	JUL 20-23	ISSUED FOR COORDINATION
1	JAN 28-22	ISSUED FOR COORDINATION

**D. B. GRAY ENGINEERING INC.**  
Stormwater Management - Grading & Drainage - Storm & Sanitary Sewers - Watermain  
700 Long Point Circle 613-425-8044  
Ottawa, Ontario d.gray@dbgrayengineering.com

Project  
**PROPOSED  
WOODVALE PENTECOSTAL  
CHURCH ADDITION,  
205 GREENBANK ROAD  
OTTAWA, ONTARIO**

**SITE SERVICING PLAN**

NOT VALID UNLESS  
SIGNED & DATED

Drawn D.B.G.  
H. Scale 1:250  
V. Scale  
Date JAN 28-22  
Job No. 20121

Drawing No.  
**C-1  
of 7**