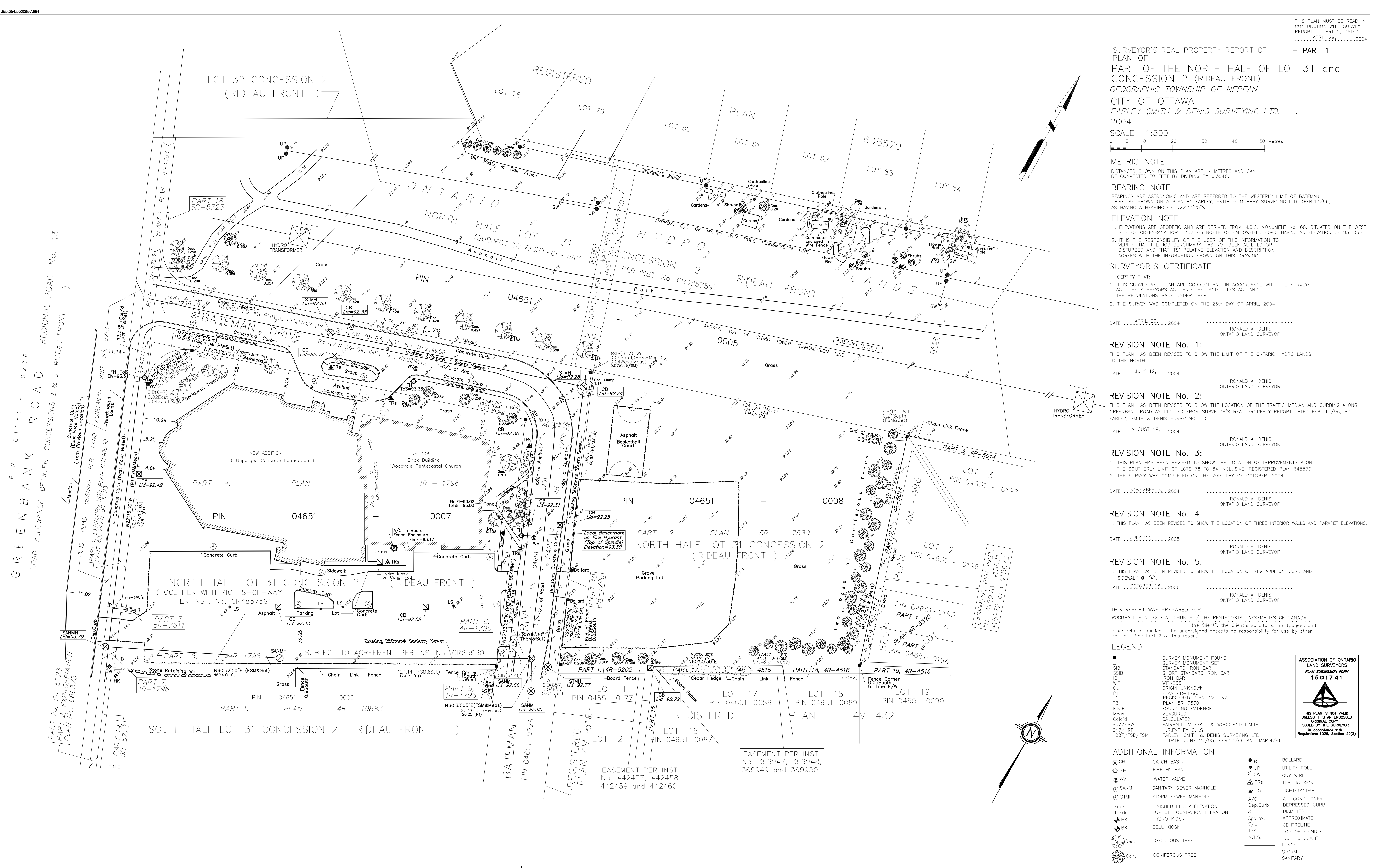


GREEN BANK ROAD REGIONAL ROAD No. 13 ROAD ALLOWANCE BETWEEN CONCESSIONS 2 & 3 RIDEAU FRONT



SURVEYOR'S REAL PROPERTY REPORT OF - PART 1 PART OF THE NORTH HALF OF LOT 31 and CONCESSION 2 (RIDEAU FRONT) GEOGRAPHIC TOWNSHIP OF NEPEAN CITY OF OTTAWA FARLEY SMITH & DENIS SURVEYING LTD. 2004

SCALE 1:500 0 5 10 20 30 40 50 Metres

METRIC NOTE DISTANCES SHOWN ON THIS PLAN ARE IN METRES AND CAN BE CONVERTED TO FEET BY DIVIDING BY 0.3048.

BEARING NOTE BEARINGS ARE ASTROMONIC AND ARE REFERRED TO THE WESTERLY LIMIT OF BATEMAN DRIVE, AS SHOWN ON A PLAN BY FARLEY, SMITH & MURRAY SURVEYING LTD. (FEB.13/96) AS HAVING A BEARING OF N22°33'25\"W.

ELEVATION NOTE 1. ELEVATIONS ARE GEODETIC AND ARE DERIVED FROM N.C.C. MONUMENT No. 68, SITUATED ON THE WEST SIDE OF GREENBANK ROAD, 2.2 km NORTH OF FALLOWFIELD ROAD, HAVING AN ELEVATION OF 93.405m. 2. IT IS THE RESPONSIBILITY OF THE USER OF THIS INFORMATION TO VERIFY THAT THE JOB BENCHMARK HAS NOT BEEN ALTERED OR DISTURBED AND THAT ITS RELATIVE ELEVATION AND DESCRIPTION AGREES WITH THE INFORMATION SHOWN ON THIS DRAWING.

SURVEYOR'S CERTIFICATE I CERTIFY THAT: 1. THIS SURVEY AND PLAN ARE CORRECT AND IN ACCORDANCE WITH THE SURVEYS ACT, THE SURVEYORS ACT, AND THE LAND TITLES ACT AND THE REGULATIONS MADE UNDER THEM. 2. THE SURVEY WAS COMPLETED ON THE 26th DAY OF APRIL, 2004.

DATE APRIL 29, 2004 RONALD A. DENIS ONTARIO LAND SURVEYOR

REVISION NOTE No. 1: THIS PLAN HAS BEEN REVISED TO SHOW THE LIMIT OF THE ONTARIO HYDRO LANDS TO THE NORTH.

DATE JULY 12, 2004 RONALD A. DENIS ONTARIO LAND SURVEYOR

REVISION NOTE No. 2: THIS PLAN HAS BEEN REVISED TO SHOW THE LOCATION OF THE TRAFFIC MEDIAN AND CURBING ALONG GREENBANK ROAD AS PLOTTED FROM SURVEYOR'S REAL PROPERTY REPORT DATED FEB. 13/96, BY FARLEY, SMITH & DENIS SURVEYING LTD.

DATE AUGUST 19, 2004 RONALD A. DENIS ONTARIO LAND SURVEYOR

REVISION NOTE No. 3: 1. THIS PLAN HAS BEEN REVISED TO SHOW THE LOCATION OF IMPROVEMENTS ALONG THE SOUTHERLY LIMIT OF LOTS 78 TO 84 INCLUSIVE, REGISTERED PLAN 645570. 2. THE SURVEY WAS COMPLETED ON THE 29th DAY OF OCTOBER, 2004.

DATE NOVEMBER 3, 2004 RONALD A. DENIS ONTARIO LAND SURVEYOR

REVISION NOTE No. 4: 1. THIS PLAN HAS BEEN REVISED TO SHOW THE LOCATION OF THREE INTERIOR WALLS AND PARAPET ELEVATIONS.

DATE JULY 22, 2005 RONALD A. DENIS ONTARIO LAND SURVEYOR

REVISION NOTE No. 5: 1. THIS PLAN HAS BEEN REVISED TO SHOW THE LOCATION OF NEW ADDITION, CURB AND SIDEWALK.

DATE OCTOBER 18, 2006 RONALD A. DENIS ONTARIO LAND SURVEYOR

THIS REPORT WAS PREPARED FOR: WOODVALE PENTECOSTAL CHURCH / THE PENTECOSTAL ASSEMBLIES OF CANADA. "the Client", the Client's solicitor's, mortgages and other related parties. The undersigned accepts no responsibility for use by other parties. See Part 2 of this report.

LEGEND table with symbols for Survey Monument, SIB, SIBB, SIBBB, IB, WITNESS, U1, P1, P2, P3, F.N.E., Meas, Calc'd, 857/FW, 647/HR, 1287/FSD/FSM, CB, FH, WV, SANMH, STMH, Fin.Fi, TpFdn, HK, BK, Dec., Con., BOLLARD, UTILITY POLE, GUY WIRE, TRs, LIGHTSTANDARD, AIR CONDITIONER, DEPRESSED CURB, DIAMETER, APPROX. CENTRELINE, TOP OF SPINDLE, N.T.S., FENCE, SANITARY.

ADDITIONAL INFORMATION table with symbols for Catch Basin, Fire Hydrant, Water Valve, Sanitary Sewer Manhole, Storm Sewer Manhole, Finished Floor Elevation, Hydro Kiosk, Bell Kiosk, Deciduous Tree, Coniferous Tree, BOLLARD, UTILITY POLE, GUY WIRE, TRs, LIGHTSTANDARD, AIR CONDITIONER, DEPRESSED CURB, DIAMETER, APPROX. CENTRELINE, TOP OF SPINDLE, N.T.S., FENCE, SANITARY.

WARNING NO PERSON MAY COPY, REPRODUCE, DISTRIBUTE OR ALTER THIS PLAN IN WHOLE OR IN PART WITHOUT THE WRITTEN PERMISSION OF FARLEY, SMITH & DENIS SURVEYING LTD. © FARLEY, SMITH & DENIS SURVEYING LTD., 2004

CAUTION THE LOCATION OF UNDERGROUND SERVICES ARE BASED ON LIMITED FIELD LOCATION, TOGETHER WITH INFORMATION FROM THE CITY OF OTTAWA - DEPARTMENT OF WORKS AND MUST BE VERIFIED.

FARLEY, SMITH & DENIS SURVEYING LTD. ONTARIO LAND SURVEYORS CANADA LANDS SURVEYORS