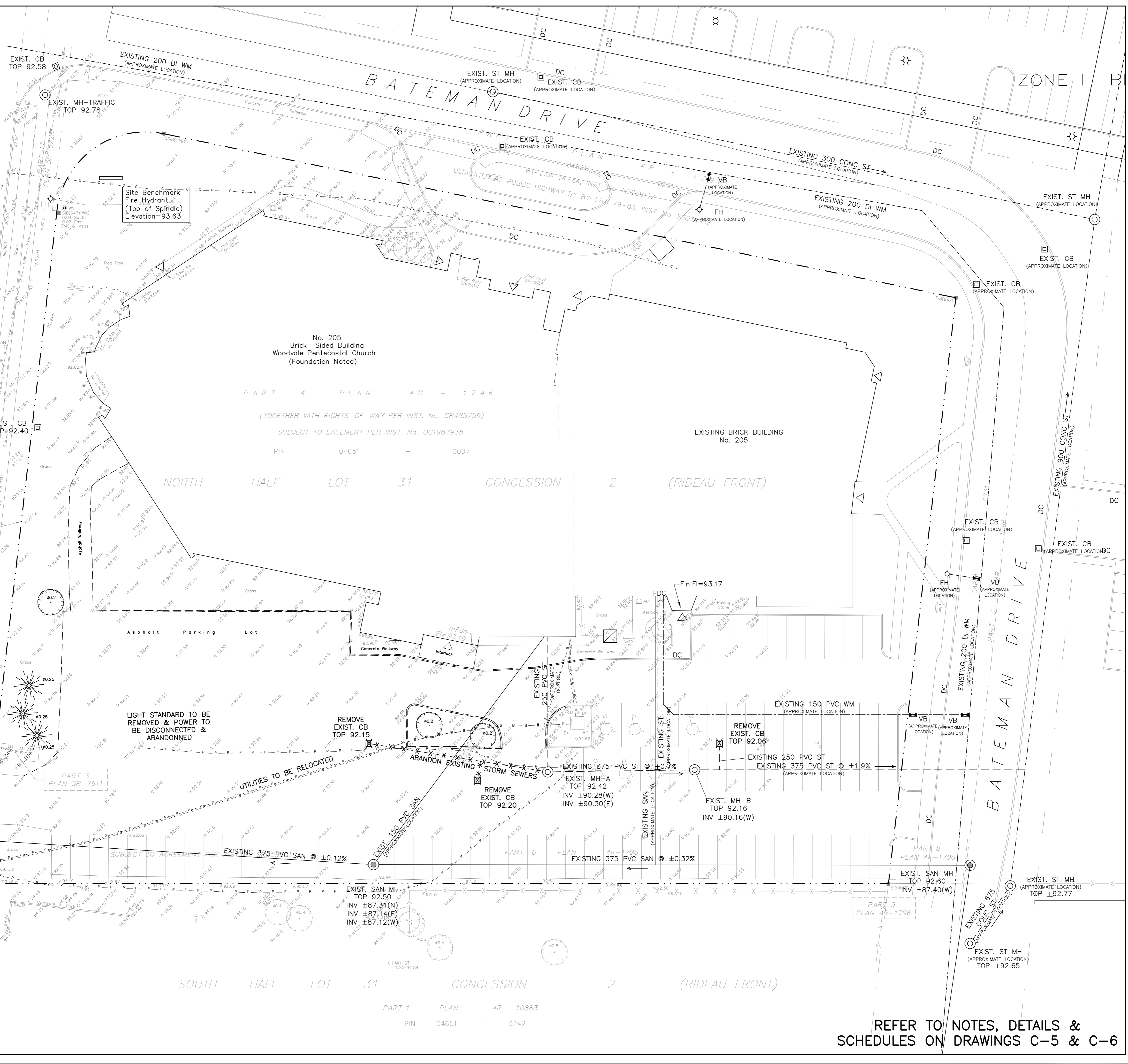


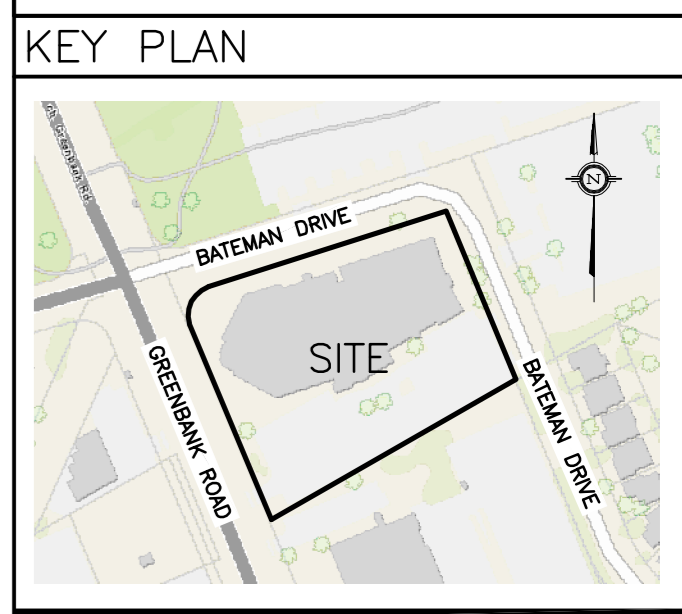
GREENBANK ROAD

OTTAWA ROAD No. 13
ROAD ALLOWANCE BETWEEN CONCESSIONS 2 & 3 (RIDEAU FRONT)

PART 20 PLAN SR-5723
PART 2 EXPROPRIATION PLAN No. 666373
PART 19 PLAN SR-5723
PART 18 PLAN SR-5723



LEGEND	
CB	CATCH-BASIN
MH	STORM MANHOLE
CB/MH	CATCH-BASIN/MANHOLE
MH	SANITARY MANHOLE
VC	VALVE CHAMBER
VB	VALVE & VALVE BOX
FH	FIRE HYDRANT
FDC	FIRE DEPARTMENT CONNECTION
SAN	SANITARY SEWER
ST	STORM SEWER
WS/WM	WATER SERVICE/WATERMAIN
SPL	SPRINGLINE OF PIPE
INV	INVERT OF PIPE
M	WATER METER
R	REMOTE WATER METER
FFL	FINISHED FLOOR ELEVATION
TOF	TOP OF FOUNDATION
BFL	BASEMENT FLOOR ELEVATION
USF	UNDERSIDE OF FOOTING
- - - -	PROPERTY LINE



No.	DATE	REVISION
3	AUG 31-23	ISSUED FOR APPROVAL
2	JUL 20-23	ISSUED FOR COORDINATION
1	JAN 28-22	ISSUED FOR COORDINATION

D. B. GRAY ENGINEERING INC.
Stormwater Management - Grading & Drainage - Storm & Sanitary Sewers - Watermain
 700 Long Point Circle 613-425-8044
 Ottawa, Ontario d.gray@dlgrayengineering.com

Project
PROPOSED WOODVALE PENTECOSTAL CHURCH ADDITION, 205 GREENBANK ROAD
 OTTAWA, ONTARIO

Drawing Title
EXISTING CONDITIONS, REMOVALS & DECOMMISSIONING

NOT VALID UNLESS SIGNED & DATED

Drawn D.B.G.
 H. Scale 1:250
 V. Scale
 Date JAN 28-22
 Job No. 20121

REFER TO NOTES, DETAILS & SCHEDULES ON DRAWINGS C-5 & C-6

Drawing No.
C-3
 of 7