

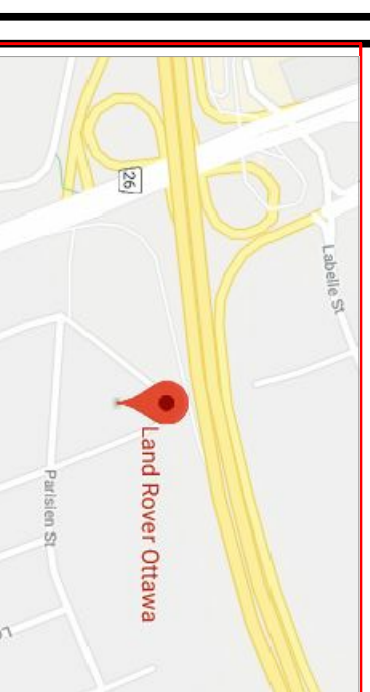
**DRAWING NOTES**

- 1 BLUE TINED THERMAL UNITS
- 2 SOLER CROWNALL SYSTEM C/W SOLAR SHADDE THERMAL UNITS
- 3 PAI PANELS, SLATE METALL. FINISH, TYPICAL
- 4 PREFINISHED REBOD METAL SINK, DARK GREY
- 5 SPONGROCK ENTRANCE AND VENTILATE PROGRAM WOOD GRAB PANELS
- 6 CONTINUOUS LED STRIP LIGHTING AROUND PERIMETER
- 7 SHOP WINDOWS, CLEAR THERMAL UNITS C/W BUILT SLOTTED JOINTS
- 8 ALL ALUMINIUM FINISHES AND O/H DOORS TO BE CLEAR ANODIZED FINISH, TYPICAL
- 9 PAINTED STEEL DOORS TO BE DARK GREY TO MATCH SINK
- 10 WOOD WORKWARK AS PER VOLVO SIGN PROGRAM
- 11 DEALERSHIP NAME SIGN AS PER VOLVO SIGN PROGRAM
- 12 SERVICE SIGN AS PER SIGN PROGRAM

**NOTES**

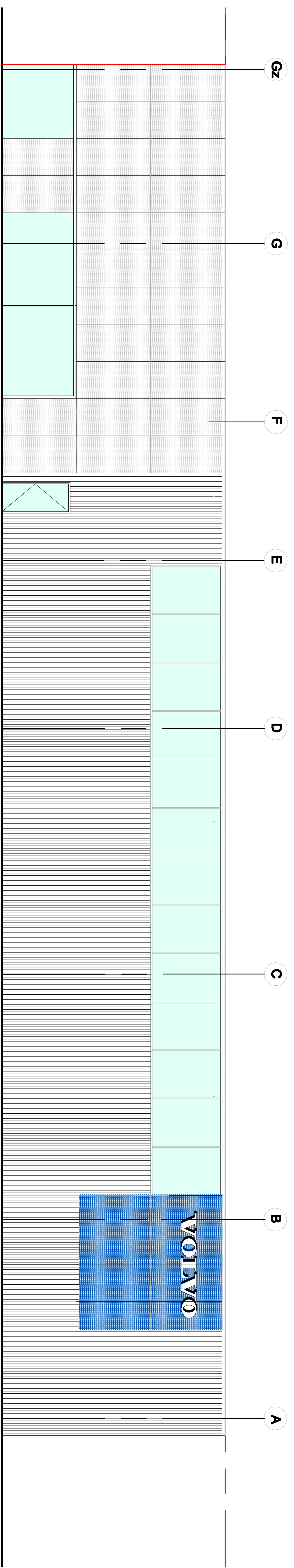
It is the responsibility of the appropriate contractor to check and verify all dimensions on site and report all errors and/or omissions to the architect. All references must comply with all pertinent codes and by-laws. Do not scale drawings. This drawing may not be used for construction until signed by the Architect. Copyright reserved.

**LOCATION MAP**



**LEGAL DESCRIPTION**

PART OF LOTS 17 AND 18  
REGISTERED PLAN 23  
CITY OF OTTAWA



**SOUTH ELEVATION (PARISIEN)**

*Lucy Ramirez*  
LUCY RAMIREZ  
PLANNER  
PLANNING, INFRASTRUCTURE & ECONOMIC  
DEVELOPMENT DEPARTMENT, CITY OF OTTAWA

**APPROVED**  
By Lucy Ramirez at 12:55 pm, Feb 22, 2024

no.	date	revision
4	20 JUN 2023	ISSUED FOR REVIEW
3	28 JUL 2022	ISSUED FOR REVIEW
2	26 MAY 2022	ISSUED FOR REVIEW
1	12 OCT 2021	ISSUED FOR REVIEW

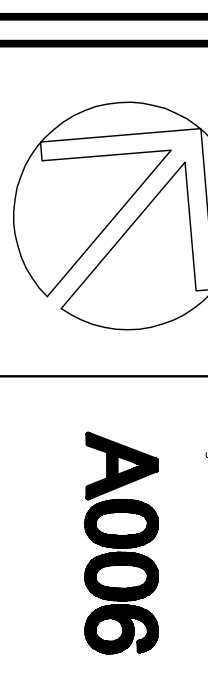
Stamp:  
brian k. clark  
A.R.C.H.I.T.E.C.T

141 Catherine Street, Suite 102  
Ottawa, Ontario K2S 1G3  
TEL: (613) 236-7412 • FAX: 236-1799  
Email: [MichaelChilde@ar.ca](mailto:MichaelChilde@ar.ca)

**VOLVO ST. LAURENT**  
**1300 MICHAEL STREET**  
**OTTAWA, ONTARIO**

OTTAWA ONTARIO  
Drawing:  
**SOUTH ELEVATION**

Project No: 1811  
Drawn By: DC  
Scale: 1 : 75  
North Arrow:  
Date: 12-OCT-2021  
Drawing No: A006



1 SOUTH ELEVATION  
SCALE: 1:75  
A006