

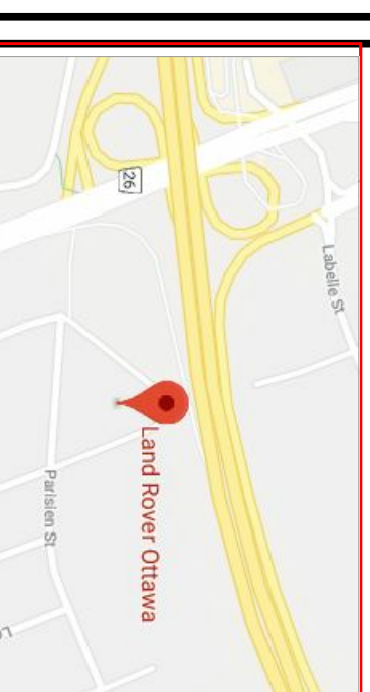
**DRAWING NOTES**

- 1 BLUE TINTED THERMAL UNITS
- 2 SOLAR CONTROLLED SYSTEM C/W SHIM DOUBLE THERMAL UNITS
- 3 PVC PANELS, SILVER METALLIC FINISH, TYPICAL
- 4 PREFINISHED RIBBED METAL SINK, DARK GREY
- 5 SPONGE DRAINAGE AND VENTILATE PROXIMA WOOD GRAB PANELS
- 6 CONTINUOUS LED STRIP LIGHTING AROUND PERIMETER
- 7 SHIM WINDOWS, CLEAR THERMAL UNITS C/W BUILT SLOPES JOINTS
- 8 ALL ALUMINIUM FINISHES AND O/H DOORS TO BE CLEAR ANODIZED FINISH, TYPICAL
- 9 PAINTED STEEL DOORS TO BE DARK GREY TO MATCH SINK
- 10 WOOD WORKWORK AS PER WOLO SHIM PROGRAM
- 11 CEILINGSHIM WAVE SHIM AS PER WOLO SHIM PROGRAM
- 12 SERVICE SIGN AS PER SHIM PROGRAM

**NOTES**

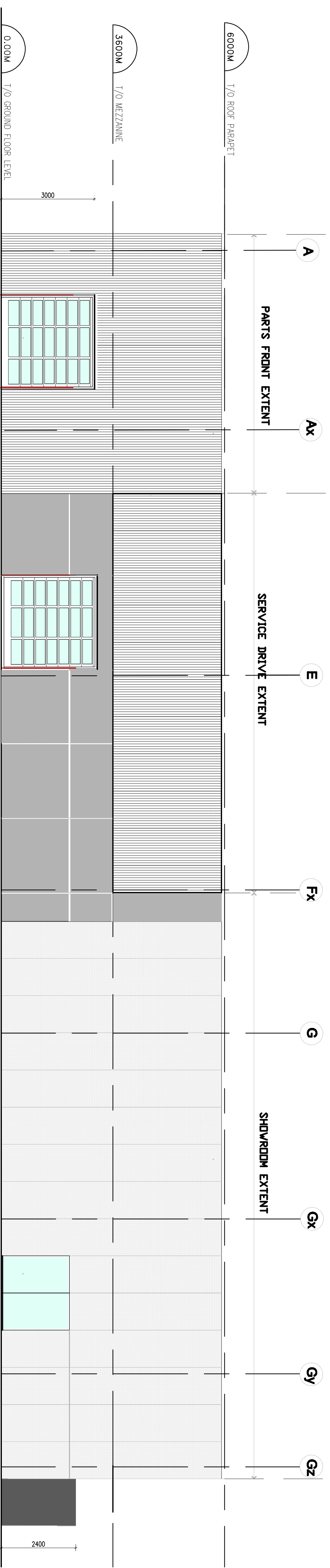
It is the responsibility of the appropriate contractor to check and verify all dimensions on site and report all errors and/or omissions to the architect. All construction must comply with all pertinent codes and by-laws. Do not scale drawings. This drawing may not be used for construction until signed by the Architect. Copyright reserved.

**LOCATION MAP**



**LEGAL DESCRIPTION**

PART OF LOTS 17 AND 18  
REGISTERED PLAN 23  
CITY OF OTTAWA



# NORTH ELEVATION (QUEENSWAY)

*Lucy Ramirez*

LUCY RAMIREZ  
PLANNER  
PLANNING, INFRASTRUCTURE & ECONOMIC  
DEVELOPMENT DEPARTMENT, CITY OF OTTAWA

**APPROVED**  
By Lucy Ramirez at 12:54 pm, Feb 22, 2024

1 NORTH ELEVATION UNFOLDED  
A008 SCALE: 1:100

no.	date	revision
3	28 JUL 2022	ISSUED FOR REVIEW
2	26 MAY 2022	ISSUED FOR REVIEW
1	12 OCT 2021	ISSUED FOR REVIEW

**brian k. clark**  
**A.R.C.H.I.T.E.C.T**  
141 Catherine Street, Suite 102  
Ottawa, Ontario K2S 1C3  
TEL: (613) 238-7412 • FAX: 238-1799  
Email: [bkclark@arc.ca](mailto:bkclark@arc.ca)

**VOLVO ST. LAURENT**  
**1300 MICHAEL STREET**  
**OTTAWA, ONTARIO**

OTTAWA ONTARIO  
**NORTH ELEVATION**

Project No.	Drawn By	Scale:
1811	DC	1 : 100
North Arrow:	Date:	Drawing No.:
	12-OCT-2021	A008

