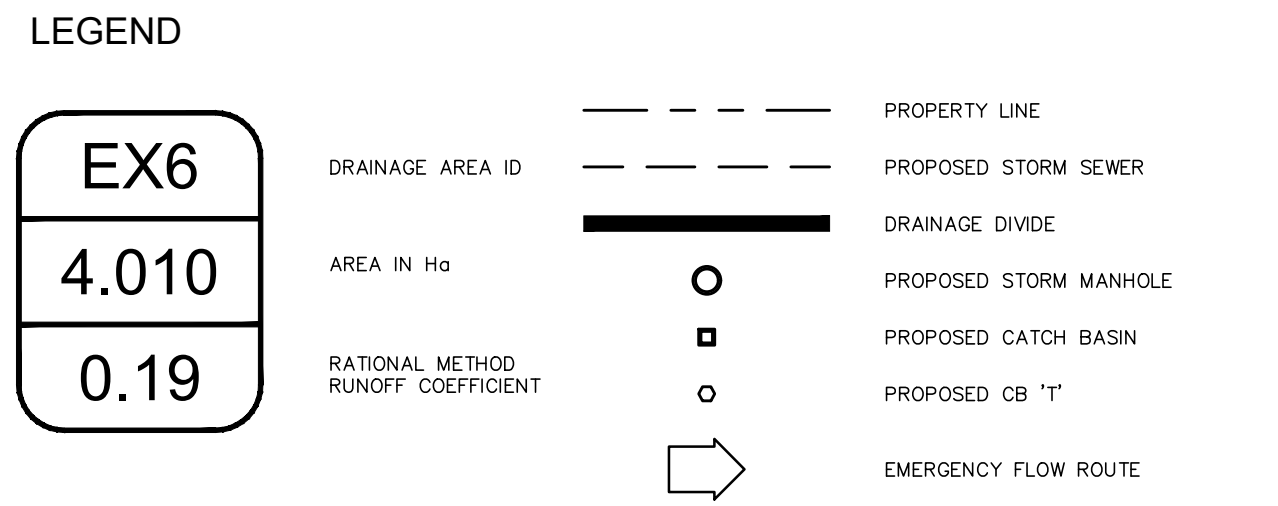
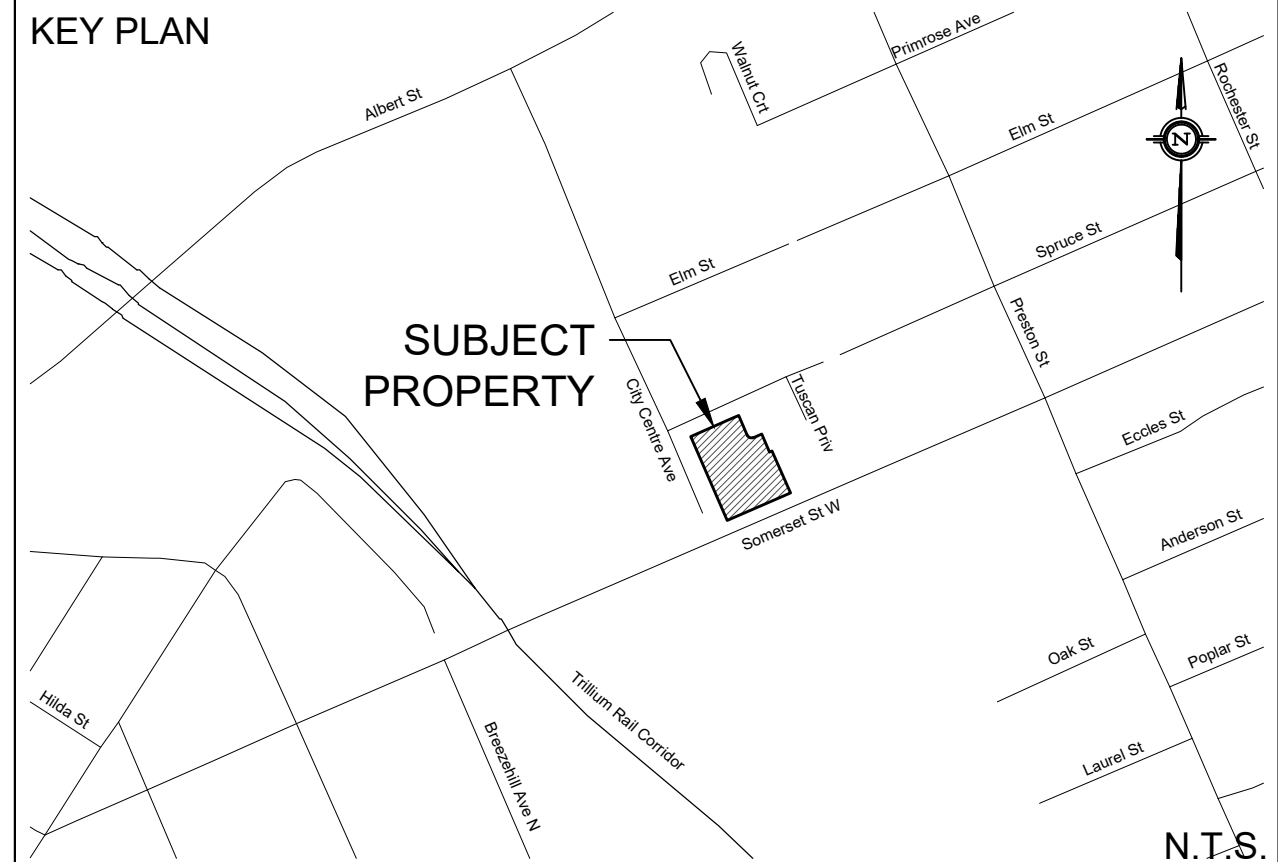



ANDREW MCCREIGHT
 MANAGER, DEVELOPMENT REVIEW CENTRAL
 PLANNING, REAL ESTATE & ECONOMIC DEVELOPMENT
 DEPARTMENT, CITY OF OTTAWA

APPROVED
 By Andrew McCreight at 2:01 pm, Feb 20, 2024



NOT FOR CONSTRUCTION

TOPOGRAPHIC INFORMATION
 TOPOGRAPHIC INFORMATION PROVIDED BY ANNIS, O'SULLIVAN, VOLLEBEKK LTD
 PROJ. NO. 13817-13
 DATED DECEMBER 17, 2013

SITE PLAN INFORMATION
 SITE PLAN PROVIDED BY HOBIN ARCHITECTURE
 PROJ. NO. 2110
 DATED JANUARY 12, 2024

GEOTECHNICAL STUDY
 GEOTECHNICAL RECOMMENDATIONS PROVIDED BY PATERSON GROUP
 PROJ. NO. PG3158-1
 DATED JANUARY 24, 2017

SITE SERVICING AND STORMWATER MANAGEMENT STUDY
 SERVICING AND STORMWATER MANAGEMENT RECOMMENDATIONS PROVIDED BY DSEL
 PROJ. NO. 21-1239
 DATED DECEMBER 2023

BENCH MARK
 TOP OF SPINDLE OF FIRE HYDRANT LOCATED AT WEST END OF SPRUCE STREET NEAR CITY CENTRE INTERSECTION
 ELEV=55.86

No.	BY	DATE	DESCRIPTION
15	B.N.C.	24.01.17	REVISED PER SITE PLAN
14	B.N.C.	23.12.11	REVISED PER SITE PLAN
13	B.N.C.	23.12.04	REVISED PER SITE PLAN
12	B.N.C.	23.11.24	REVISED PER SITE PLAN
11	B.N.C.	23.11.20	REVISED PER SITE PLAN
10	B.N.C.	23.10.25	REVISED PER SITE PLAN
9	B.N.C.	23.10.03	REVISED PER SITE PLAN
8	C.P.B.	23.09.06	REVISED PER SITE PLAN
7	G.G.G.	22.08.31	REVISED PER SITE PLAN
6	B.N.C.	22.08.15	REVISED PER SITE PLAN
5	B.N.C.	22.04.12	REVISED PER SITE PLAN

PROJECT No21-1239



REVIEWED BY

STORMWATER MANAGEMENT PLAN
989 SOMERSET STREET © DSEL

TAGGART REALTY MANAGEMENT

708-225 Metcalfe Street
 Ottawa, Ontario, K2P 1P9

DSEL
 david schaeffer engineering ltd
 SMART SUBDIVISIONS™

120 Iber Road Unit 103
 Stittsville, Ontario, K2S 1E9
 Tel. (613) 836-0856
 Fax. (613) 836-7183
 www.DSEL.ca

DRAWN BY:	B.N.C.	CHECKED BY:	A.D.F.	DRAWING NO.	SHEET NO.
DESIGNED BY:	B.N.C.	CHECKED BY:	A.D.F.	SWM-1	1 of 1
SCALE:	1:200	DATE:	JUNE 2021		