

GENERAL

- DRAWINGS TO BE READ IN CONJUNCTION WITH ARCHITECTURAL AND LANDSCAPE DRAWINGS.
- ALL SERVICES, MATERIALS, CONSTRUCTION METHODS AND INSTALLATIONS SHALL BE IN ACCORDANCE WITH THE LATEST STANDARDS AND REGULATIONS OF THE: CITY OF OTTAWA STANDARD SPECIFICATIONS AND DRAWINGS, ONTARIO PROVINCIAL SPECIFICATION STANDARD SPECIFICATION (OPSS) AND ONTARIO PROVINCIAL STANDARD DRAWINGS (OPSD), UNLESS OTHERWISE SPECIFIED, TO THE SATISFACTION OF THE CITY AND THE CONSULTANT.
- THE POSITION OF EXISTING POLE LINES, CONDUITS, WATERMANS, SEWERS AND OTHER UNDERGROUND AND ABOVEGROUND UTILITIES, STRUCTURES AND APPURTENANCES IS NOT NECESSARILY SHOWN ON THE CONTRACT DRAWING, AND WHERE SHOWN, THE ACCURACY OF THE POSITION OF SUCH UTILITIES AND STRUCTURES IS NOT GUARANTEED. PRIOR TO CONSTRUCTION, THE CONTRACTOR SHALL SATISFY HIMSELF OF THE EXACT LOCATION OF ALL SUCH UTILITIES AND STRUCTURES, AND SHALL ASSUME ALL LIABILITY FOR DAMAGE TO THEM DURING THE COURSE OF CONSTRUCTION. ANY RELOCATION OF EXISTING UTILITIES REQUIRED BY THE DEVELOPMENT OF SUBJECT LANDS IS TO BE UNDERTAKEN AT CONTRACTOR'S EXPENSE.
- THE CONTRACTOR MUST NOTIFY ALL EXISTING UTILITY COMPANY OFFICIALS FIVE (5) BUSINESS DAYS PRIOR TO START OF CONSTRUCTION AND HAVE ALL EXISTING UTILITIES AND SERVICES LOCATED IN THE FIELD OR EXPOSED PRIOR TO THE START OF CONSTRUCTION, INCLUDING BUT NOT LIMITED TO HYDRO, BELL, CABLE TV, AND CONSUMERS GAS LINES.
- ALL TRENCHING AND EXCAVATIONS TO BE IN ACCORDANCE WITH THE LATEST REVISIONS OF THE OCCUPATIONAL HEALTH AND SAFETY ACT AND REGULATIONS FOR CONSTRUCTION PROJECTS. ALL INFORMATION SHALL BE CONFIRMED PRIOR TO COMMENCEMENT OF CONSTRUCTION.
- REFER TO ARCHITECTS PLANS FOR BUILDING DIMENSIONS, ELEVATIONS, LAYOUT AND REMOVALS. REFER TO LANDSCAPE PLAN FOR LANDSCAPED DETAILS AND OTHER RELEVANT INFORMATION. ALL INFORMATION SHALL BE CONFIRMED PRIOR TO COMMENCEMENT OF CONSTRUCTION.
- TOPOGRAPHIC SURVEY COMPLETED AND PROVIDED BY ANNIS, O'SULLIVAN, VOLLEBEKK LTD. DATED MAY 2, 2023. CONTRACTOR TO VERIFY IN THE FIELD PRIOR TO CONSTRUCTION OF ANY WORK AND NOTIFY THE ENGINEER OF ANY DISCREPANCIES.
- ALL ELEVATIONS ARE GEODETIC AND UTILIZE METRIC UNITS. VERIFY THAT JOB BENCHMARKS HAVE NOT BEEN ALTERED OR DISTURBED.
- ALL GROUND SURFACES SHALL BE EVENLY GRADED WITHOUT PONDING AREAS AND WITHOUT LOW POINTS EXCEPT WHERE APPROVED SWALE OR DRAIN OUTLETS ARE PROVIDED.
- ALL EDGES OF DISTURBED PAVEMENT SHALL BE SAW CUT TO FORM A NEAT AND STRAIGHT LINE PRIOR TO PLACING NEW PAVEMENT. PAVEMENT REINSTATEMENT SHALL BE WITH STEP JOINTS OF 500mm WIDTH MINIMUM.
- ALL DISTURBED AREAS OUTSIDE PROPOSED GRADING LIMITS TO BE RESTORED TO ORIGINAL ELEVATIONS AND CONDITIONS UNLESS OTHERWISE SPECIFIED. EXISTING PARKING LOT SHALL BE RE-ASPHALTED AT EXISTING GRADES EXCEPT AS NOTED TO EVEN OUT GRADES. ALL RESTORATION SHALL BE COMPLETED WITH THE GEOTECHNICAL REQUIREMENTS FOR BACKFILL AND COMPACTION.
- ABUTTING PROPERTY GRADES TO BE MATCHED.
- CONTRACTOR SHALL OBTAIN AND PAY FOR ALL NECESSARY PERMITS AND APPROVALS FROM THE MUNICIPAL AUTHORITIES PRIOR TO COMMENCING CONSTRUCTION, INCLUDING WATER PERMIT AND ROAD CUT PERMIT.
- MINIMIZE DISTURBANCE TO EXISTING VEGETATION DURING THE EXECUTION OF ALL WORKS.
- REMOVE FROM SITE ALL EXCESS EXCAVATED MATERIAL UNLESS OTHERWISE DIRECTED FROM THE ENGINEER. EXCAVATE AND REMOVE ALL ORGANIC MATERIAL AND DEBRIS LOCATED WITHIN THE PROPOSED BUILDING, PARKING AND ROADWAY LOCATIONS.
- AT PROPOSED UTILITY CONNECTION POINTS AND CROSSINGS (I.E. STORM SEWER, SANITARY SEWER, WATER, ETC.) THE CONTRACTOR SHALL DETERMINE THE PRECISE LOCATION AND DEPTH OF EXISTING UTILITIES AND REPORT ANY DISCREPANCIES OR CONFLICTS TO THE ENGINEER BEFORE COMMENCING WORK.
- PRIOR TO CONSTRUCTION, A GEOTECHNICAL ENGINEER REGISTERED IN THE PROVINCE OF ONTARIO IS TO INSPECT ALL SUB-SURFACES FOR FOOTINGS, SERVICES AND PAVEMENT STRUCTURES.
- CONTRACTOR TO OBTAIN POST-CONSTRUCTION TOPOGRAPHIC SURVEY PERFORMED BY CERTIFIED OLS OR P.ENG. CONFIRMING COMPLIANCE WITH DESIGN GRADING AND SERVICING. SURVEY IS TO INCLUDE LOCATION AND INVERTS FOR BURIED UTILITIES.
- PROVIDE CCTV INSPECTION REPORT FOR ALL SEWERS AND CATCHBASIN LEADS 200MM DIAMETER AND LARGER. REPEAT CCTV INSPECTION FOLLOWING RECTIFICATION OF ANY DEFICIENCIES.
- REPORT REFERENCES
 - SERVICING AND SWM REPORT FOR CEPPE ES, PREPARED BY WSP CANADA INC. PROJECT NO. 221-06227-00, JUNE 30, 2023.
 - GEOTECHNICAL INVESTIGATION REPORT - PROPOSED AVALON III ELEMENTARY SCHOOL, PREPARED BY PATERSON GROUP, PROJ. NO.PG6715-1, JULY 10, 2023.
 - STORMWATER MANAGEMENT REPORT FOR SUMMERSIDE WEST PHASES 2 AND 3, PREPARED BY JFSA, JFSA REF NO. 1102-13, APRIL 2016, UPDATED JULY 2016
 - DESIGN BRIEF FOR SUMMERSIDE WEST - PHASE 2 MER BLEUE ROAD, PREPARED BY DSEL, PROJ. NO. 15-808, APRIL 29, 2016.

PARKING LOT AND WORK IN PUBLIC RIGHTS OF WAY

- CONTRACTOR TO REINSTATE ROAD CUTS AS PER CITY OF OTTAWA DETAIL R10.
- GEOTECHNICAL INVESTIGATION REPORT - PROPOSED AVALON III ELEMENTARY SCHOOL, PREPARED BY PATERSON GROUP, PROJ. NO.PG6715-1, JULY 10, 2023.
- CONTRACTOR TO PREPARE SUBGRADE, INCLUDING PROOFROLLING, TO THE SATISFACTION OF THE GEOTECHNICAL CONSULTANT PRIOR TO THE COMMENCEMENT OF PLACEMENT OF GRANULAR B MATERIAL.
- FILL TO BE PLACED AND COMPACTED PER THE GEOTECHNICAL REPORT REQUIREMENTS.
- CONTRACTOR TO SUPPLY, PLACE AND COMPACT GRANULAR B MATERIAL IN ACCORDANCE WITH THE RECOMMENDATIONS OF THE GEOTECHNICAL CONSULTANT. CONTRACTOR TO PROVIDE CONSULTANT WITH SAMPLES OF GRANULAR B MATERIAL FOR TESTING AND CERTIFICATION FROM THE GEOTECHNICAL CONSULTANT THAT THE MATERIAL MEETS THE GRADATION REQUIREMENTS SPECIFIED IN THE GEOTECHNICAL REPORT.
- GRANULAR A MATERIAL TO BE PLACED ONLY UPON APPROVAL BY THE GEOTECHNICAL CONSULTANT OF GRANULAR B PLACEMENT.
- CONTRACTOR TO SUPPLY, PLACE AND COMPACT GRANULAR A MATERIAL IN ACCORDANCE WITH THE RECOMMENDATIONS OF THE GEOTECHNICAL CONSULTANT. CONTRACTOR TO PROVIDE CONSULTANT WITH SAMPLES OF GRANULAR A MATERIAL FOR TESTING AND CERTIFICATION FROM THE GEOTECHNICAL CONSULTANT THAT THE MATERIAL MEETS THE GRADATION REQUIREMENTS SPECIFIED IN THE GEOTECHNICAL REPORT.
- ASPHALT MATERIAL TO BE PLACED ONLY UPON APPROVAL BY THE GEOTECHNICAL CONSULTANT OF GRANULAR A PLACEMENT.
- CONTRACTOR TO SUPPLY, PLACE AND COMPACT ASPHALT MATERIAL IN ACCORDANCE WITH THE RECOMMENDATIONS OF THE GEOTECHNICAL CONSULTANT. CONTRACTOR TO PROVIDE CONSULTANT WITH SAMPLES OF ASPHALT MATERIAL FOR TESTING AND CERTIFICATION FROM THE GEOTECHNICAL CONSULTANT THAT THE MATERIAL MEETS THE REQUIREMENTS SPECIFIED IN THE GEOTECHNICAL REPORT.
- CONTRACTOR IS RESPONSIBLE FOR ESTABLISHING LINE AND GRADE IN ACCORDANCE WITH THE PLANS, AND FOR PROVIDING THE CONSULTANT WITH VERIFICATION PRIOR TO PLACEMENT.
- ALL EXCESS MATERIAL TO BE HAULED OFFSITE AND DISPOSED OF AT AN APPROVED DUMP SITE. SHOULD THE CONTRACTOR DISCOVER ANY HAZARDOUS MATERIAL, CONTRACTOR IS TO NOTIFY CONSULTANT. CONSULTANT TO DETERMINE APPROPRIATE DISPOSAL METHOD/LOCATION.
- PAVEMENT STRUCTURE (MATERIAL TYPES AND THICKNESS) TO BE AS SPECIFIED IN THE GEOTECHNICAL REPORT.

TEMPORARY BENCHMARKS

TBM#	ELEV.	DESCRIPTION
1	88.26	TOP OF SPINDLE ON EXISTING FIRE HYDRANT IN FRONT OF 2405 MER BLEUE ROAD
2	88.73	TOP OF SPINDLE ON EXISTING FIRE HYDRANT ON SOUTH SIDE OF MONARDIA WAY

STORM SEWERS AND STRUCTURES

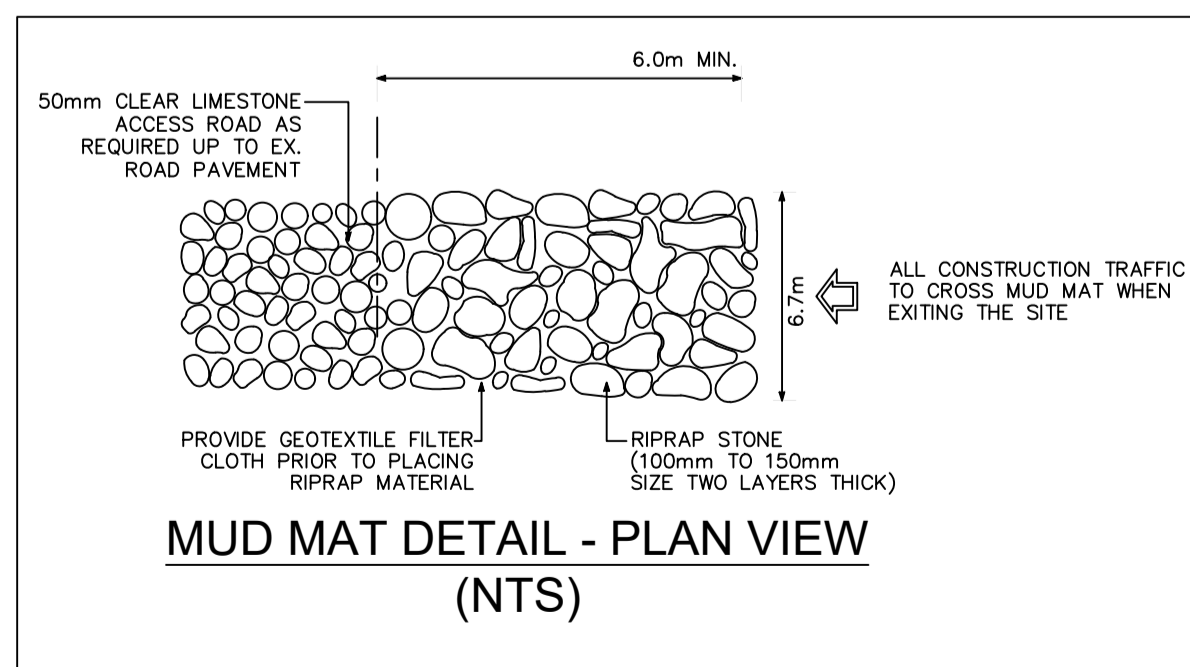
- ALL STORM SEWER MATERIALS AND CONSTRUCTION METHODS SHALL CONFORM TO THE CURRENT CITY OF OTTAWA STANDARDS AND SPECIFICATIONS. PROVIDE CCTV INSPECTION REPORTS FOR ALL NEW STORM SEWERS, SERVICES AND CB LEADS.
- STORM SEWERS 450mm DIAMETER AND SMALLER SHALL BE PVC SDR-35, WITH RUBBER GASKET PER CSA A-257.3.
- STORM SEWER LARGER THAN 450mm SHALL BE REINFORCED CONCRETE CLASS 100D.
- SEWER BEDDING AS PER CITY OF OTTAWA DETAIL S6.
- ALL STORM MANHOLES TO BE AS PER STORM STRUCTURE TABLE.
- ANY NEW OR EXISTING STORM SEWER WITH LESS THAN 2.0m COVER REQUIRES THERMAL INSULATION AS PER CITY OF OTTAWA STANDARD W22, OR APPROVED BY THE ENGINEER.
- ALL CATCHBASIN LEADS TO BE MINIMUM 200mm DIAMETER AT MINIMUM 1.0% SLOPE UNLESS OTHERWISE SPECIFIED.
- STORM CATCHBASINS AS PER OPSD 705.010 AND FRAME/COVER AS PER CITY STANDARD DRAWINGS S19. STORM CBM'S AS INDICATED IN TABLE WITH SUMP. ADJUSTMENT SECTIONS SHALL BE AS PER OPSD 704.010.
- INSTALLATION OF FLOW CONTROL ICDS TO BE VERIFIED BY QUALITY VERIFICATION ENGINEER RETAINED BY CONTRACTOR.
- PROVIDE BACKWATER VALVE ON FOUNDATION DRAIN, STORM DISCHARGE, AND OVERFLOW DISCHARGE PER S14
- ALL CATCHBASINS EXCLUDING LANDSCAPE CATCHBASINS TO HAVE 150 MMØ PERFORATED PIPE FOR 3.0M ON ALL AVAILABLE SIDES AT AN ELEVATION OF 300mm BELOW SUBGRADE LEVEL AS PER CITY OF OTTAWA STANDARD DRAWING 'R1'
- CLAY SEALS TO BE INSTALLED AS PER CITY STANDARD DRAWING NO. S8. THE SEALS SHOULD BE AT LEAST 1.5m LONG (IN THE TRENCH DIRECTION) AND SHOULD EXTEND FROM TRENCH WALL TO TRENCH WALL AT NO MORE THAN 60m INTERVALS IN THE SERVICE TRENCHES. REFER TO GEOTECHNICAL INVESTIGATION REPORT FOR DETAILS.

SANITARY SEWER AND STRUCTURES

- ALL SANITARY SEWER, SANITARY SEWER APPURTENANCES AND CONSTRUCTION METHODS SHALL CONFORM TO THE CURRENT CITY OF OTTAWA STANDARDS AND SPECIFICATIONS. PROVIDE CCTV INSPECTION REPORTS FOR ALL NEW SANITARY PIPING.
- SANITARY SEWER PIPE SIZE 150mm DIAMETER AND GREATER TO BE PVC SDR-35 (UNLESS SPECIFIED OTHERWISE) WITH RUBBER GASKET TYPE JOINTS IN CONFORMANCE WITH CSA B-182.2.4.
- SEWER BEDDING AS PER CITY OF OTTAWA DETAIL S6.
- ALL SANITARY MANHOLES 1200mm IN DIAMETER TO BE AS PER OPSD 701.01. FRAME AND COVER TO BE AS PER CITY OF OTTAWA STANDARD S25 AND S24.
- MAINTENANCE HOLE BENCHING AND PIPE OPENING ALTERNATIVES AS PER THE OPSD 701.021
- ANY SANITARY SEWER WITH LESS THAN 2.0m COVER REQUIRES THERMAL INSULATION AS PER CITY OF OTTAWA STANDARD W22, OR APPROVED BY THE ENGINEER.
- PROVIDE BACKWATER VALVE FOR BUILDING SANITARY SERVICES PER S14.1

WATERMAIN

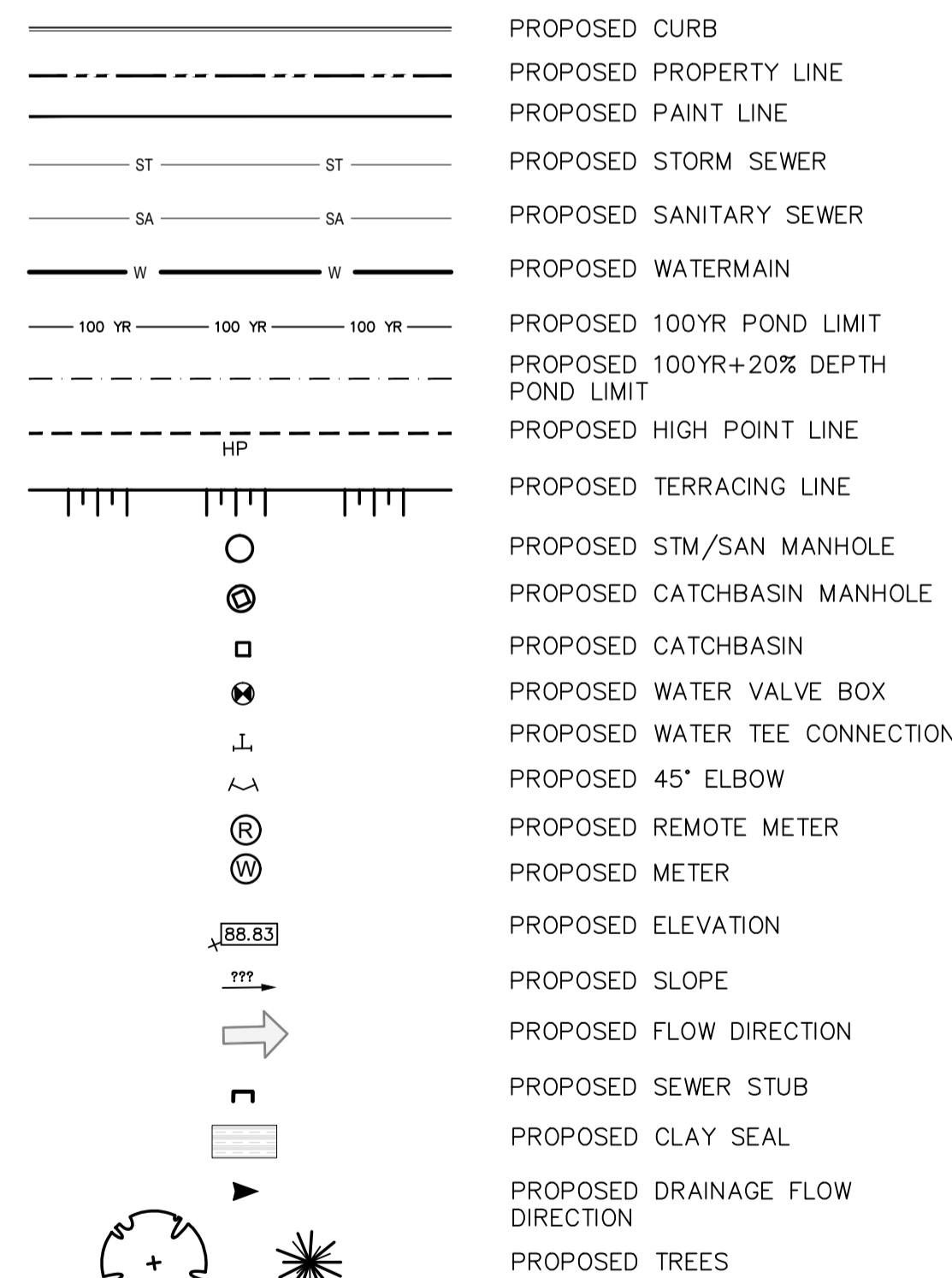
- ALL WATERMAIN AND WATERMAIN APPURTENANCES, MATERIALS, CONSTRUCTION AND TESTING METHODS SHALL CONFORM TO THE CURRENT CITY OF OTTAWA AND MINISTRY OF ENVIRONMENT STANDARDS AND SPECIFICATIONS.
- ALL WATERMAIN 300mm DIAMETER AND SMALLER TO BE POLY VINYL CHLORIDE (PVC) CLASS 150 DR 18 MEETING AWWA SPECIFICATION C900.
- ALL WATERMAIN TO BE INSTALLED AT MINIMUM COVER OF 2.4m BELOW FINISHED GRADE. WHERE WATERMANS CROSS OVER OTHER UTILITIES, A MINIMUM 0.30m CLEARANCE SHALL BE MAINTAINED; WHERE WATERMANS CROSS UNDER OTHER UTILITIES, A MINIMUM 0.50m CLEARANCE SHALL BE MAINTAINED. WHERE THE MINIMUM SEPARATION CANNOT BE ACHIEVED, THE WATERMAIN SHALL BE INSTALLED AS PER CITY OF OTTAWA STANDARDS W25 AND W25.2. WHERE 2.4m MINIMUM DEPTH CANNOT BE ACHIEVED, THERMAL INSULATION SHALL BE PROVIDED AS PER CITY OF OTTAWA STANDARD W22. WHERE A WATERMAIN IS IN CLOSE PROXIMITY TO AN OPEN STRUCTURE, THERMAL INSULATION SHALL BE PROVIDED AS PER CITY OF OTTAWA STANDARD W23.
- CONCRETE THRUST BLOCKS AND MECHANICAL RESTRAINTS ARE TO BE INSTALLED AT ALL TEES, BENDS, HYDRANTS, REDUCERS, ENDS OF MAINS AND CONNECTIONS 100mm AND LARGER, IN ACCORDANCE WITH CITY OF OTTAWA STANDARDS W25.3 & W25.4.
- CATHODIC PROTECTION REQUIRED FOR ALL IRON FITTINGS AS PER CITY OF OTTAWA STANDARD W40 & W42.
- ALL VALVES AND VALVE BOXES AND CHAMBERS, HYDRANTS, AND HYDRANT VALVES AND ASSEMBLES SHALL BE INSTALLED AS PER CITY OF OTTAWA STANDARD
- FIRE HYDRANT LOCATION AND INSTALLATION AS PER CITY OF OTTAWA STANDARD W18 & W19. CONTRACTOR TO PROVIDE FLOW TEST AND PAINTING OF NEW HYDRANT IN ACCORDANCE WITH CITY STANDARDS.
- IF WATER MAIN MUST BE DEFLECTED TO MEET ALIGNMENT, ENSURE THAT THE AMOUNT OF DEFLECTION USED IS LESS THAN HALF THAT RECOMMENDED BY THE MANUFACTURER.



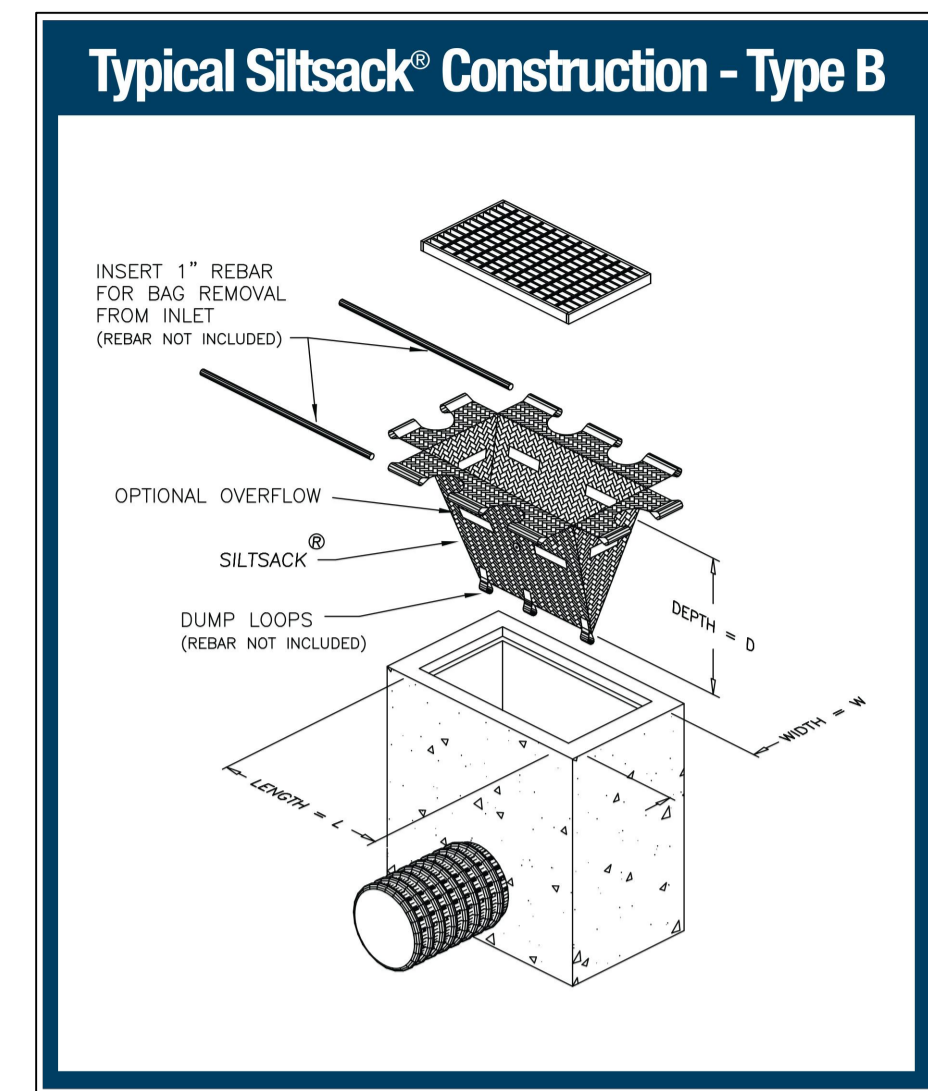
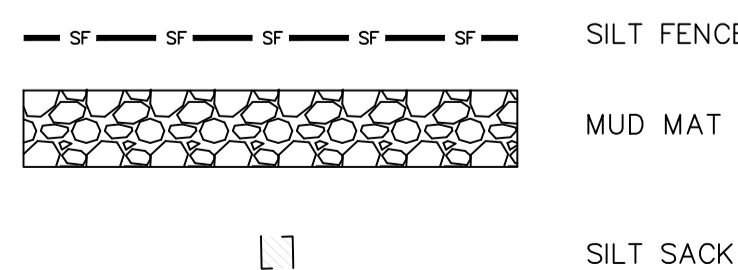
EROSION AND SEDIMENT CONTROL

- ** CONTRACTOR IS RESPONSIBLE FOR ALL INSTALLATION, MONITORING, REPAIR AND REMOVAL OF ALL EROSION AND SEDIMENT CONTROL FEATURES. **
- PRIOR TO START OF CONSTRUCTION:
 - INSTALL SILT FENCE IN LOCATION SHOWN.
 - INSTALL FILTER FABRIC OR SILT SACK FILTERS IN ALL THE CATCHBASINS AND MANHOLES TO REMAIN DURING CONSTRUCTION WITHIN THE SITE.
 - INSPECT MEASURES IMMEDIATELY AFTER INSTALLATION.
 - INSTALL MUD MAT AT CONSTRUCTION ENTRANCES.
 - DURING CONSTRUCTION:
 - MINIMIZE THE EXTENT OF DISTURBED AREAS AND THE DURATION OF EXPOSURE AND IMPACTS TO EXISTING GRADING.
 - PERIMETER VEGETATION TO REMAIN IN PLACE UNTIL PERMANENT STORM WATER MANAGEMENT IS IN PLACE. OTHERWISE, IMMEDIATELY INSTALL SILT FENCE WHEN THE EXISTING SITE IS DISTURBED AT THE PERIMETER.
 - PROTECT DISTURBED AREAS FROM OVERLAND FLOW BY PROVIDING TEMPORARY SWALES TO THE SATISFACTION OF THE FIELD ENGINEER. TIE-IN TEMPORARY SWALE TO EXISTING CB'S AS REQUIRED.
 - PROVIDE TEMPORARY COVER SUCH AS SEEDING OR MULCHING IF DISTURBED AREA WILL NOT BE REHABILITATED WITHIN 30 DAYS.
 - INSPECT SILT FENCES, FILTER FABRIC FILTERS AND CATCH BASIN SUMPS WEEKLY AND WITHIN 24 HOURS AFTER A STORM EVENT. CLEAN AND REPAIR WHEN NECESSARY.
 - DOWNSTREAM STORM INFRASTRUCTURE SHALL BE PROTECTED FROM UNFILTERED RUNOFF DURING ON-SITE STORM INFRASTRUCTURE DEMOLITION.
 - DRAWING TO BE REVIEWED AND REVISED AS REQUIRED DURING CONSTRUCTION.
 - EROSION CONTROL FENCING TO BE ALSO INSTALLED AROUND THE BASE OF ALL STOCKPILES. DO NOT LOCATE TOPSOIL PILES AND EXCAVATION MATERIAL CLOSER THAN 2.5m FROM ANY PAVED SURFACE, OR ONE WHICH IS TO BE PAVED BEFORE THE PILE IS REMOVED. ALL TOPSOIL PILES ARE TO BE SEEDDED IF THEY ARE TO REMAIN ON SITE LONG ENOUGH FOR SEEDS TO GROW (LONGER THAN 30 DAYS).
 - CONTROL WIND-BLOWN DUST OFF SITE BY SEEDING TOPSOIL PILES AND OTHER AREAS TEMPORARILY (PROVIDE WATERING AS REQUIRED AND TO THE SATISFACTION OF THE ENGINEER).
 - NO ALTERNATE METHODS OF EROSION PROTECTION SHALL BE PERMITTED UNLESS APPROVED BY THE FIELD ENGINEER.
 - CITY ROADWAY AND SIDEWALK TO BE CLEANED OF ALL SEDIMENT FROM VEHICULAR TRACKING AS REQUIRED.
 - DURING WET CONDITIONS, TIRES OF ALL VEHICLES/EQUIPMENT LEAVING THE SITE ARE TO BE SCRAPED.
 - ANY MUD/MATERIAL TRACKED ONTO THE ROAD SHALL BE REMOVED IMMEDIATELY BY HAND OR RUBBER TIRE LOADER.
 - TAKE ALL NECESSARY STEPS TO PREVENT BUILDING MATERIAL, CONSTRUCTION DEBRIS OR WASTE BEING SPILLED OR TRACKED ONTO ABUTTING PROPERTIES OR PUBLIC STREETS DURING CONSTRUCTION AND PROCEED IMMEDIATELY TO CLEAN UP ANY AREAS SO AFFECTED.
 - ALL EROSION CONTROL STRUCTURE TO REMAIN IN PLACE UNTIL ALL DISTURBED GROUND SURFACES HAVE BEEN STABILIZED EITHER BY PAVING OR RESTORATION OF VEGETATIVE GROUND COVER.
 - THE CONTRACTOR SHALL IMPLEMENT BEST MANAGEMENT PRACTICES, TO PROVIDE FOR PROTECTION OF THE AREA DRAINAGE SYSTEM AND THE RECEIVING WATERCOURSE, DURING CONSTRUCTION ACTIVITIES. THE CONTRACTOR ACKNOWLEDGES THAT FAILURE TO IMPLEMENT APPROPRIATE EROSION AND SEDIMENT CONTROL MEASURES MAY BE SUBJECT TO PENALTIES IMPOSED BY ANY APPLICABLE REGULATORY AGENCY.

PROPOSED LEGEND:



ESC LEGEND:



Recommended Pavement Structure - LIGHT DUTY	
Thickness (mm)	Material Description
50	Wear Course - HL-3 or Superpave 12.5 Asphaltic Concrete
150	BASE - OPSS Granular A Crushed Stone
300	SUBBASE - OPSS Granular B Type II

SUBGRADE - Either fill, in-situ soil, or OPSS Granular B Type I or II material placed over fill or in-situ soil.

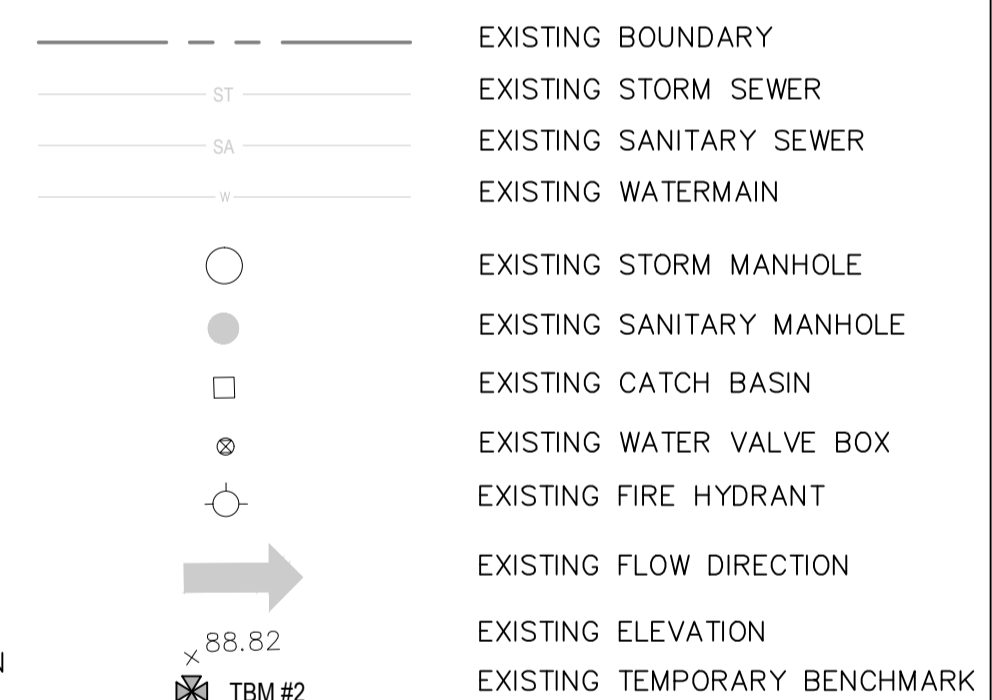
Recommended Pavement Structure - HEAVY DUTY	
Thickness (mm)	Material Description
40	Wear Course - Superpave 12.5 Asphaltic Concrete
50	Binder Course - Superpave 19.0 Asphaltic Concrete
150	BASE - OPSS Granular A Crushed Stone
450	SUBBASE - OPSS Granular B Type II

SUBGRADE - Either fill, in-situ soil, or OPSS Granular B Type I or II material placed over fill or in-situ soil.

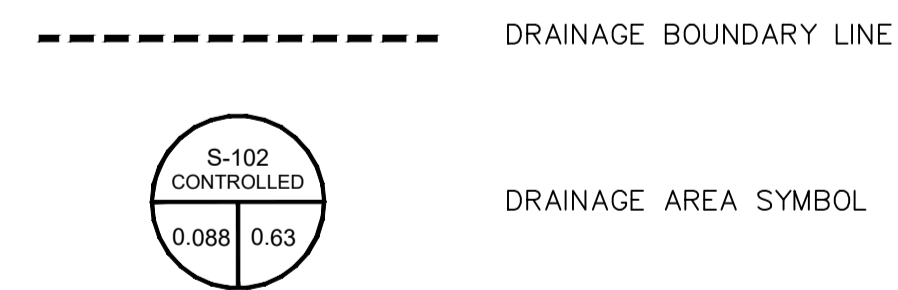
Recommended Pavement Structure - Brick/Stone Pathways	
Thickness (mm)	Material Description
Specified by Others	Wear Course - Interlocking Stones/Brick pavers
25-40	Leveling Course - Stone Dust or Sand
450	SUBBASE - OPSS Granular A

SUBGRADE - Either fill, in-situ soil, or OPSS Granular B Type I or II material placed over fill or in-situ soil.

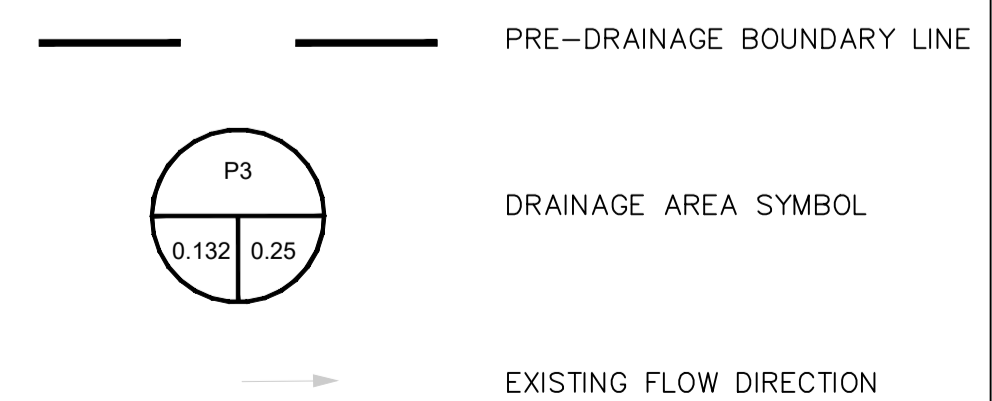
EXISTING LEGEND:



DRAINAGE AREA LEGEND:



PRE-DEVELOPMENT DRAINAGE AREA LEGEND:



- 6 0 2024/01/17 ISSUED FOR SITE PLAN CONTROL
- 5 0 2023/11/24 ISSUED FOR SITE PLAN CONTROL
- 4 0 2023/11/17 ISSUED FOR COORDINATION
- 3 0 2023/09/28 ISSUED FOR BUILDING PERMIT
- 2 0 2023/09/21 ISSUED FOR SITE PLAN CONTROL

ISSUE NO.	REV. NO.	DATE	ISSUE

LES IDÉES, CONCEPTS, DISPOSITIONS ET PLANS MONTRÉS OU REPRÉSENTÉS PAR CE DESSIN APPARTIENNENT À EDWARD J. CUHACI AND ASSOCIATES ARCHITECTS INC. ET ONT ÉTÉ CRÉÉS, ET DÉVELOPPÉS POUR ÊTRE UTILISÉS DANS LE CADRE DU PRÉSENT PROJET. ILS NE DOIVENT PAS ÊTRE UTILISÉS À D'AUTRES FINS NI COMMUNIQUÉS À QUI QUE CE SOIT SANS LA PERMISSION ÉCRITE DE EDWARD J. CUHACI AND ASSOCIATES ARCHITECTS INC.

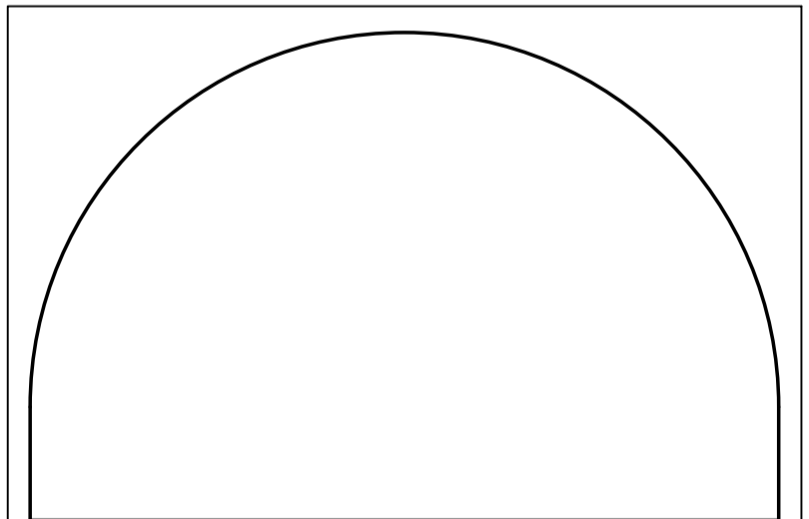
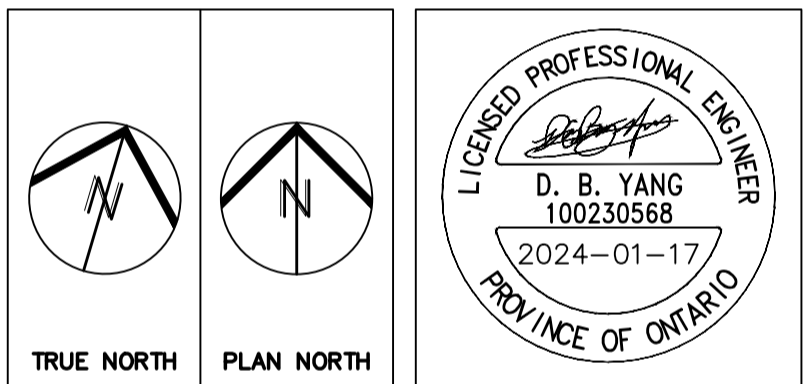
L'ARCHITECTE DÉCLINE TOUTE RESPONSABILITÉ DÉCOULANT DE PROBLÈMES FAISANT SUITE AU NON RESPECT DES PLANS ET DEVIS OU DE L'INTENTION DU CONCEPT QU'ILS TRANSMETTENT, OU DE TOUTS PROBLÈMES POUVANT RÉSULTER DU DÉFAUT DE TIERS D'OBTENIR OU DE SUIVRE LES INSTRUCTIONS DE L'ARCHITECTE RELATIVEMENT AUX ERREURS, OMISSIONS, INCOHÉRENCES, AMBIGUITÉS OU CONTRADICTIONS ALLEGUÉS.

L'ENTREPRENEUR DOIT VÉRIFIER TOUTES LES DIMENSIONS SUR PLACE ET INFORMER L'ARCHITECTE DE TOUT ÉCART AVANT LE DÉBUT DES TRAVAUX. NE PAS MESURER LES DESSINS À L'ÉCHELLE.

ALL IDEAS, DESIGNS, ARRANGEMENTS, AND PLANS INDICATED OR REPRESENTED BY THIS DRAWING ARE OWNED BY AND THE PROPERTY OF EDWARD J. CUHACI AND ASSOCIATES INC. AND WERE CREATED, EVOLVED, AND DEVELOPED FOR USE ON AND IN CONNECTION WITH THE SPECIFIED PROJECT. NONE OF THE IDEAS, DESIGNS, ARRANGEMENTS OR PLANS SHALL BE USED BY OR DISCLOSED TO ANY PERSON, FIRM, OR CORPORATION FOR ANY PURPOSE WHATSOEVER WITHOUT THE WRITTEN PERMISSION OF EDWARD J. CUHACI AND ASSOCIATES INC.

THE ARCHITECT WAIVES ANY AND ALL RESPONSIBILITY AND LIABILITY FOR PROBLEMS WHICH ARISE FROM FAILURE TO FOLLOW THESE PLANS, SPECIFICATIONS, AND THE DESIGN INTENT THEY CONVEY, OR FOR PROBLEMS WHICH ARISE FROM OTHERS' FAILURE TO OBTAIN AND/OR FOLLOW THE ARCHITECT'S GUIDANCE WITH RESPECT TO ANY ERRORS, OMISSIONS, INCONSISTENCIES, AMBIGUITIES OR CONFLICTS WHICH ARE ALLEGED.

CONTRACTOR TO VERIFY ALL DIMENSIONS AND NOTIFY THE ARCHITECT OF ANY DISCREPANCIES BEFORE WORK COMMENCES. DO NOT SCALE DRAWINGS



EDWARD J. CUHACI & ASSOCIATES ARCHITECTS Inc.
 171 Slater St, Suite 100, Ottawa, Ontario, K1P 5H7
 Fax: (613) 236-1944 Telephone: (613) 236-7135 E-mail: info@cuhaci.com

PROJECT TITLE/TITRE DU PROJET
ÉCOLE ÉLÉMENTAIRE PUBLIQUE ORLÉANS SUD
 675 MONARDIA WAY
 OTTAWA, ONTARIO

CONSEIL DES ÉCOLES PUBLIQUES DE L'EST DE L'ONTARIO
 2445 BOUL. ST-LAURENT, OTTAWA, ON

DRAWING TITLE/TITRE DU DESSIN
NOTES AND DETAIL

SCALE	PROJ. No	ISSUE No	REV. No
ECHELLE	0003850-9668	6	0
DRAWN BY	ST-RVT	DRAWING/DESSIN	
CHECKED BY	DY		
DATE	JANUARY 2024		

ACAD FILE/FICHIER: 0003850-9668 C01-8.dwg

C01

#####

D07-12-23-0102

STORM STRUCTURE AND ICD DATA TABLE													
STRUCTURE ID	AREA ID	SIZE	STRUCTURE	COVER	TOP OF GRATE	INVERT			DIAMETER (mm)	TYPE	HEAD (m)	FLOW (l/s)	ICD TYPE
						INLET	INLET	OUTLET					
675 MONARDIA WAY													
STMH1	S11	2400mm DIA	OPSD 701.013	S24.1	87.58			84.170	83.870	1200			CONC. CL 100-D
STMH3	S5	2400mm DIA	OPSD 701.013	S24.1	87.49			85.560	83.700	1200			CONC. CL 100-D
CBMH5	S3	1200mm DIA.	OPSD 701.010	S28.1	87.40			85.100	85.000	300			PVC SDR-35
CBMH106	S6	1200mm DIA.	OPSD 701.010	S28.1	87.43			85.920	85.820	300			PVC SDR-35
CBMH107	S7	1200mm DIA.	OPSD 701.010	S28.1	87.49			85.730	85.700	300			PVC SDR-35
CBMH108	S18	1200mm DIA.	OPSD 701.010	S28.1	87.65			86.000	86.000	450			CONC. CL 100-D
CBMH109	S8	1200mm DIA.	OPSD 701.010	S28.1	87.38			85.770	85.770	300			PVC SDR-35
CBMH105	S16	1800mm DIA	OPSD 701.012	S28.1	87.46			85.640	85.510	450			CONC. CL 100-D
STMH104	S15	1200mm DIA.	OPSD 701.010	S24.1	87.74	85.370	85.470	85.370	85.220	450			CONC. CL 100-D
CBMH103	S10	1200mm DIA.	OPSD 701.010	S28.1	87.60			84.960	84.900	450	2.99	155	Plug Type 215mm
CBMH102	S14	1200mm DIA.	OPSD 701.010	S28.1	87.25			84.760	84.730	450			CONC. CL 100-D
CBMH101A	S13	1200mm DIA.	OPSD 701.010	S28.1	87.16			84.540	84.510	450			CONC. CL 100-D
STMH101	S13	1200mm DIA.	OPSD 701.010	S24.1	87.49			85.340	84.460	450			CONC. CL 100-D
CB1	S19	600X600mm	OPSD 705.010	S19.1	87.43			86.220	200				PVC SDR-35
CB2	S17	600X600mm	OPSD 705.010	S19.1	87.59			85.890	200				PVC SDR-35
CB3	S10	600X600mm	OPSD 705.010	S19.1	87.36			85.660	200				PVC SDR-35
CB4	S15	600X600mm	OPSD 705.010	S19.1	87.52			85.820	200				PVC SDR-35
CB7	S9	600X600mm	OPSD 705.010	S19.1	87.33			85.630	200				PVC SDR-35
CB16	S11	600X600mm	OPSD 705.010	S19.1	87.40			85.700	200				PVC SDR-35
CB17	S5	600X600mm	OPSD 705.010	S19.1	87.38			85.680	200				PVC SDR-35
CB18	S2	600X600mm	OPSD 705.010	S19.1	87.55			85.850	200				PVC SDR-35
CB19	S4	600X600mm	OPSD 705.010	S19.1	87.44			85.740	200				PVC SDR-35
TCB22	S18	300mm DIA.	S30	S30	87.65			86.380	250				HDPE
TCB23	S18	300mm DIA.	S30	S30	87.95			86.270	250				HDPE
TCB24	S18	300mm DIA.	S30	S30	87.65			86.160	250				HDPE
TCB25	S18	300mm DIA.	S30	S30	85.65			86.160	250				HDPE
TCB26	S18	300mm DIA.	S30	S30	87.65			86.550	250				HDPE
TCB27	S18	300mm DIA.	S30	S30	87.65			86.380	250				HDPE
TCB28	S18	300mm DIA.	S30	S30	87.95			86.270	250				HDPE
TEMP CBMH	S20	1800mm DIA	OPSD 701.012	OPSD 403.010	85.67			83.920	900		1.69	732	Plug Type 537mm

Post Development Storm Drainage Area Table								
Catchment Area	Total (ha)	Grass 0.2	Gravel 0.4	Asphalt 0.9	Outlet Structure	Ponding Area (m2)	Ponding Depth	Ponding Volume
1	0.239			0.239				
2	0.051			0.051				
3	0.110	0.090		0.020				
4	0.048	0.048						
5	0.034	0.024		0.010				
6	0.108	0.077		0.031	CBMH106	280.0	0.170	15.87
7	0.138			0.138	CBMH107	161.0	0.11	5.90
8	0.081	0.031		0.050	CBMH109	367.0	0.22	26.91
9	0.109			0.109	CB7	762.0	0.27	68.58
10	0.154	0.019		0.135	CB3	460.0	0.240	36.80
11	0.084	0.064		0.020				0.00
12	0.025	0.010		0.016				0.00
13	0.044	0.044						0.00
14	0.033	0.033						0.00
15	0.071	0.057	0.001	0.013	CB4	70.0	0.080	1.87
16	0.060	0.004		0.056	CBMH105	80.0	0.140	3.73
17	0.075	0.056	0.0113	0.008				0.00
18	0.305	0.305						0.00
19	0.094	0.066		0.029	CB1	156.0	0.170	8.84
20	0.058	0.058						
21	0.048	0.048						
Total	1.968	1.032		0.924		2336.000		168.503

SAN STRUCTURE TABLE						
STRUCTURE ID	TOP OF GRATE ELEVATION	INVERT			DESCRIPTION	COVER
		INLET	INLET	OUTLET		
SAN MH2	87.6	85.110	84.640	1200mm DIA.	OPSD-701.010	S24

PIPE CROSSING TABLE						
1	200mmØ CONC STM	Invert		Obvert		200mmØ W/M
		83.720	84.020	1.090	Clearance Under	
2	200mmØ PVC SAN	85.151	85.351	0.250	Clearance Above	84.451 84.901 450mmØ CONC STM
3	200mmØ W/M	84.930	85.130	0.190	Clearance Above	84.290 84.740 450mmØ CONC STM

WATERMAIN SCHEDULE					
STATION	DESCRIPTION	FINISHED GRADE	TOP OF WATERMAIN	AS-BUILT WATERMAIN	COVER
200mm W/M Service					
10+000	Connect to Ex. 200mm W/M WITH 200x200 Tee	87.570		85.170	2.400
10+006.6	200mm V&VB	87.800	85.400		2.400
10+010.8	Crossing 1200mmØ CONC STM	87.710	85.310		2.400
10+019.7	200mm W/M Stub (School)	87.750	85.600		2.150
20+000	Connect to Ex. 200mm W/M WITH 300x200 Tee	87.460		85.060	2.400
20+015.8	200mm V&VB	87.550	85.150		2.400
20+019.5	Crossing 450mmØ CONC STM	87.530	85.130		2.400
20+063	45 deg. horizontal bend	87.620	85.220		
20+065	45 deg. horizontal bend	87.670	85.270		
20+066.0	200mm W/M Stub (School)	87.750	85.600		2.150



- 6 0 2024/01/17 ISSUED FOR SITE PLAN CONTROL
- 5 0 2023/11/24 ISSUED FOR SITE PLAN CONTROL
- 4 0 2023/11/17 ISSUED FOR COORDINATION
- 3 0 2023/09/28 ISSUED FOR BUILDING PERMIT
- 2 0 2023/09/21 ISSUED FOR SITE PLAN CONTROL

ISSUE NO.	REV. NO.	DATE	ISSUE
		YYMMDD	

LES IDÉES, CONCEPTS, DISPOSITIONS ET PLANS MONTRÉS OU REPRÉSENTÉS PAR CE DESSIN APPARTIENNENT À EDWARD J. CUHACI AND ASSOCIATES ARCHITECTS INC. ET ONT ÉTÉ CRÉÉS, DÉVELOPPÉS POUR ÊTRE UTILISÉS DANS LE CADRE DU PRÉSENT PROJET. ILS NE DOIVENT PAS ÊTRE UTILISÉS À D'AUTRES FINS NI COMMUNIQUÉS À QUI QUE CE SOIT SANS LA PERMISSION ÉCRITE DE EDWARD J. CUHACI AND ASSOCIATES ARCHITECTS INC.

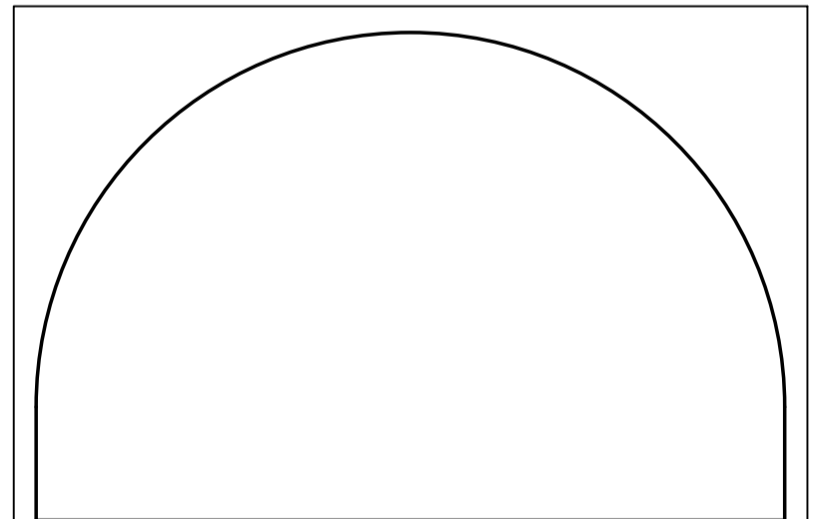
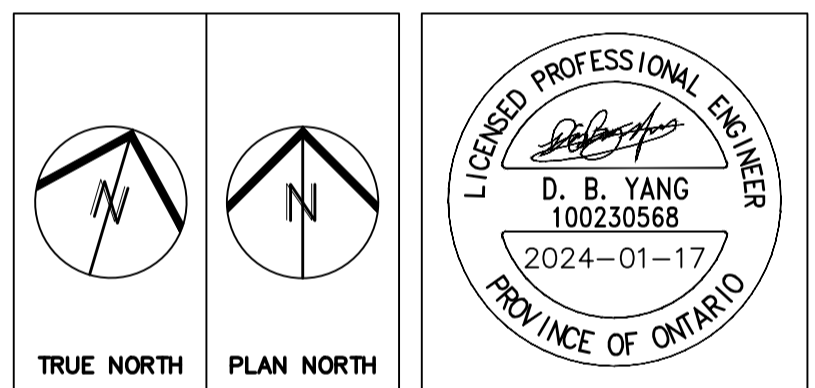
L'ARCHITECTE DÉCLINE TOUTE RESPONSABILITÉ DÉCOULANT DE PROBLÈMES FAISANT SUITE AU NON RESPECT DES PLANS ET DEVS OU DE L'INTENTION DU CONCEPT QU'ILS TRANSMETTENT, OU DE TOUTS PROBLÈMES POUVANT RÉSULTER DU DÉFAUT DE TIERS D'OBTENIR OU DE SUIVRE LES INSTRUCTIONS DE L'ARCHITECTE RELATIVEMENT AUX ERREURS, OMISSIONS, INCOHÉRENCES, AMBIGUITÉS OU CONTRADICTIONS ALLEGUÉS.

L'ENTREPRENEUR DOIT VÉRIFIER TOUTES LES DIMENSIONS SUR PLACE ET INFORMER L'ARCHITECTE DE TOUT ÉCART AVANT LE DÉBUT DES TRAVAUX. NE PAS MESURER LES DESSINS À L'ÉCHELLE.

ALL IDEAS, DESIGNS, ARRANGEMENTS, AND PLANS INDICATED OR REPRESENTED BY THIS DRAWING ARE OWNED BY AND THE PROPERTY OF EDWARD J. CUHACI AND ASSOCIATES INC. AND WERE CREATED, EVOLVED, AND DEVELOPED FOR USE ON AND IN CONNECTION WITH THE SPECIFIED PROJECT. NONE OF THE IDEAS, DESIGNS, ARRANGEMENTS OR PLANS SHALL BE USED BY OR DISCLOSED TO ANY PERSON, FIRM, OR CORPORATION FOR ANY PURPOSE WHATSOEVER WITHOUT THE WRITTEN PERMISSION OF EDWARD J. CUHACI AND ASSOCIATES INC.

THE ARCHITECT WAIVES ANY AND ALL RESPONSIBILITY AND LIABILITY FOR PROBLEMS WHICH ARISE FROM FAILURE TO FOLLOW THESE PLANS, SPECIFICATIONS, AND THE DESIGN INTENT THEY CONVEY, OR FOR PROBLEMS WHICH ARISE FROM OTHERS' FAILURE TO OBTAIN AND/OR FOLLOW THE ARCHITECT'S GUIDANCE WITH RESPECT TO ANY ERRORS, OMISSIONS, INCONSISTENCIES, AMBIGUITIES OR CONFLICTS WHICH ARE ALLEGED.

CONTRACTOR TO VERIFY ALL DIMENSIONS AND NOTIFY THE ARCHITECT OF ANY DISCREPANCIES BEFORE WORK COMMENCES. DO NOT SCALE DRAWINGS



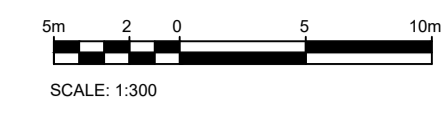
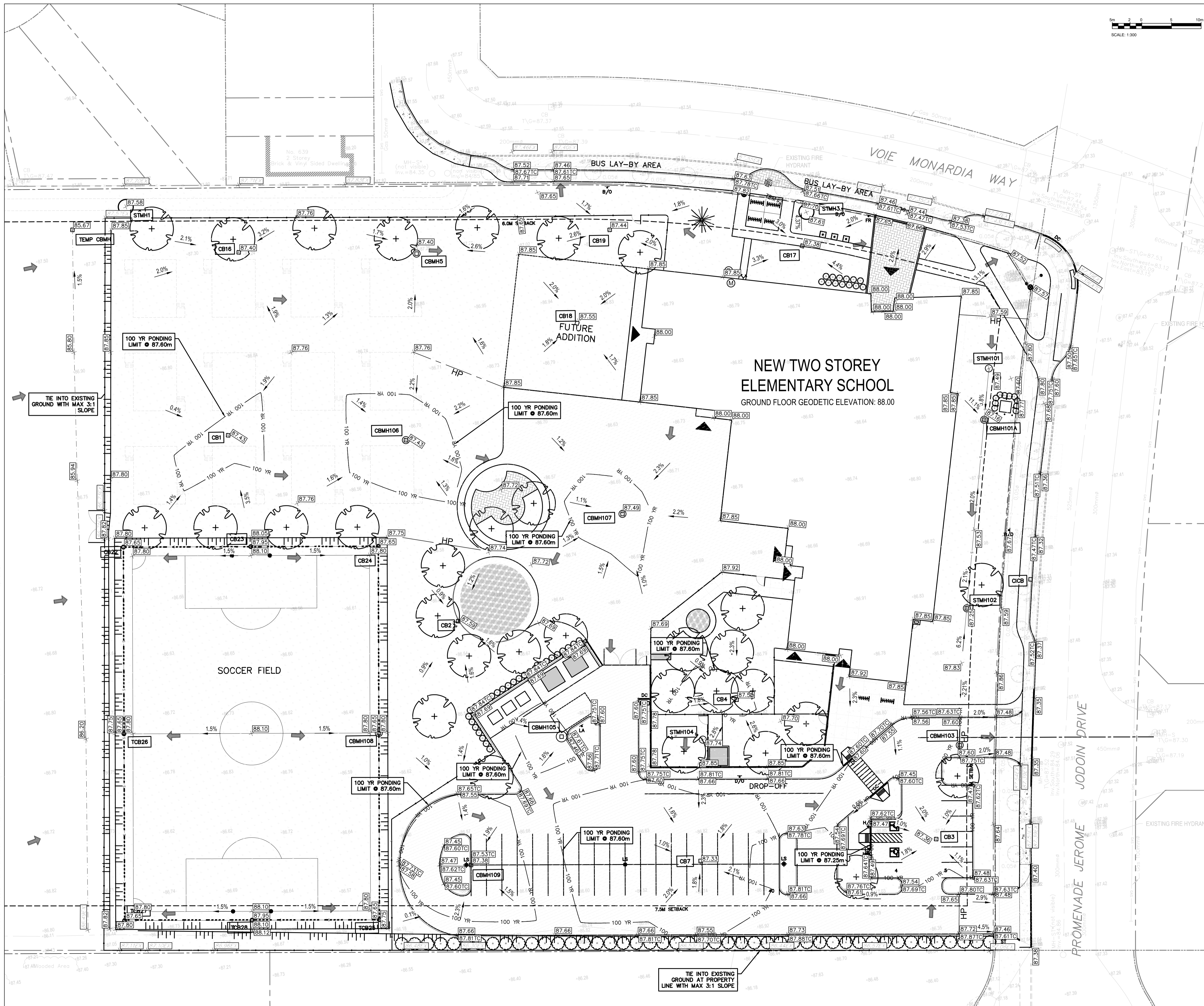
EDWARD J. CUHACI & ASSOCIATES ARCHITECTS Inc.
 171 Slaters St, Suite 100, Ottawa, Ontario, K1P 5H7
 Fax: (613) 236-1944 Telephone: (613) 236-7135 E-mail: info@cuhaci.com

PROJECT TITLE/TITRE DU PROJET
ÉCOLE ÉLÉMENTAIRE PUBLIQUE ORLÉANS SUD
 675 MONARDIA WAY
 OTTAWA, ONTARIO

CONSEIL DES ÉCOLES PUBLIQUES DE L'EST DE L'ONTARIO
 2445 BOUL. ST-LAURENT, OTTAWA, ON

DRAWING TITLE/TITRE DU DESSIN
SERVICING TABLES

SCALE	PROJ. No.	ISSUE No.	REV. No.
ECHELLE	0003850-9668	6	0
DRAWN BY	ST-RV/T	DRAWING/DESSIN	
DESIGNED BY			
CHECKED BY	DY	C02	
DATE	JANUARY 2024		
ACAD FILE/FICHIER: 0003850-9668 C01-8.dwg			



- 6 0 2024/01/17 ISSUED FOR SITE PLAN CONTROL
- 5 0 2023/11/24 ISSUED FOR SITE PLAN CONTROL
- 4 0 2023/11/17 ISSUED FOR COORDINATION
- 3 0 2023/09/28 ISSUED FOR BUILDING PERMIT
- 2 0 2023/09/21 ISSUED FOR SITE PLAN CONTROL

ISSUE NO.	REV.	DATE	ISSUE
6	0	2024/01/17	ISSUED FOR SITE PLAN CONTROL
5	0	2023/11/24	ISSUED FOR SITE PLAN CONTROL
4	0	2023/11/17	ISSUED FOR COORDINATION
3	0	2023/09/28	ISSUED FOR BUILDING PERMIT
2	0	2023/09/21	ISSUED FOR SITE PLAN CONTROL

LES IDÉES, CONCEPTS, DISPOSITIONS ET PLANS MONTRÉS OU REPRÉSENTÉS PAR CE DESSIN APPARTIENNENT À EDWARD J. CUHACI AND ASSOCIATES ARCHITECTS INC. ET ONT ÉTÉ CRÉÉS, DÉVELOPPÉS POUR ÊTRE UTILISÉS DANS LE CADRE DU PRÉSENT PROJET. ILS NE DOIVENT PAS ÊTRE UTILISÉS À D'AUTRES FINS NI COMMUNIQUÉS À QUI QUE CE SOIT SANS LA PERMISSION ÉCRITE DE EDWARD J. CUHACI AND ASSOCIATES ARCHITECTS INC.

L'ARCHITECTE DÉCLINE TOUTE RESPONSABILITÉ DÉCOULANT DE PROBLÈMES FAISANT SUITE AU NON RESPECT DES PLANS ET DEVIS OU DE L'INTENTION DU CONCEPT QU'ILS TRANSMETTENT, OU DE TOUTS PROBLÈMES POUVANT RÉSULTER DU DÉFAUT DE TIERS D'OBTENIR OU DE SUIVRE LES INSTRUCTIONS DE L'ARCHITECTE RELATIVEMENT AUX ERREURS, OMISSIONS, INCOHÉRENCES, AMBIGUITÉS OU CONTRADICTIONS ALLEGUÉS.

L'ENTREPRENEUR DOIT VÉRIFIER TOUTES LES DIMENSIONS SUR PLACE ET INFORMER L'ARCHITECTE DE TOUT ÉCART AVANT LE DÉBUT DES TRAVAUX. NE PAS MESURER LES DESSINS À L'ÉCHELLE.

ALL IDEAS, DESIGNS, ARRANGEMENTS, AND PLANS INDICATED OR REPRESENTED BY THIS DRAWING ARE OWNED BY AND THE PROPERTY OF EDWARD J. CUHACI AND ASSOCIATES INC. AND WERE CREATED, EVOLVED, AND DEVELOPED FOR USE ON AND IN CONNECTION WITH THE SPECIFIED PROJECT. NONE OF THE IDEAS, DESIGNS, ARRANGEMENTS OR PLANS SHALL BE USED OR DISCLOSED TO ANY PERSON, FIRM, OR CORPORATION FOR ANY PURPOSE WHATSOEVER WITHOUT THE WRITTEN PERMISSION OF EDWARD J. CUHACI AND ASSOCIATES INC.

THE ARCHITECT WAIVES ANY AND ALL RESPONSIBILITY AND LIABILITY FOR PROBLEMS WHICH ARISE FROM FAILURE TO FOLLOW THESE PLANS, SPECIFICATIONS, AND THE DESIGN INTENT THEY CONVEY, OR FOR PROBLEMS WHICH ARISE FROM OTHERS' FAILURE TO OBTAIN AND/OR FOLLOW THE ARCHITECT'S GUIDANCE WITH RESPECT TO ANY ERRORS, OMISSIONS, INCONSISTENCIES, AMBIGUITIES OR CONFLICTS WHICH ARE ALLEGED.

CONTRACTOR TO VERIFY ALL DIMENSIONS AND NOTIFY THE ARCHITECT OF ANY DISCREPANCIES BEFORE WORK COMMENCES. DO NOT SCALE DRAWINGS

TRUE NORTH

PLAN NORTH

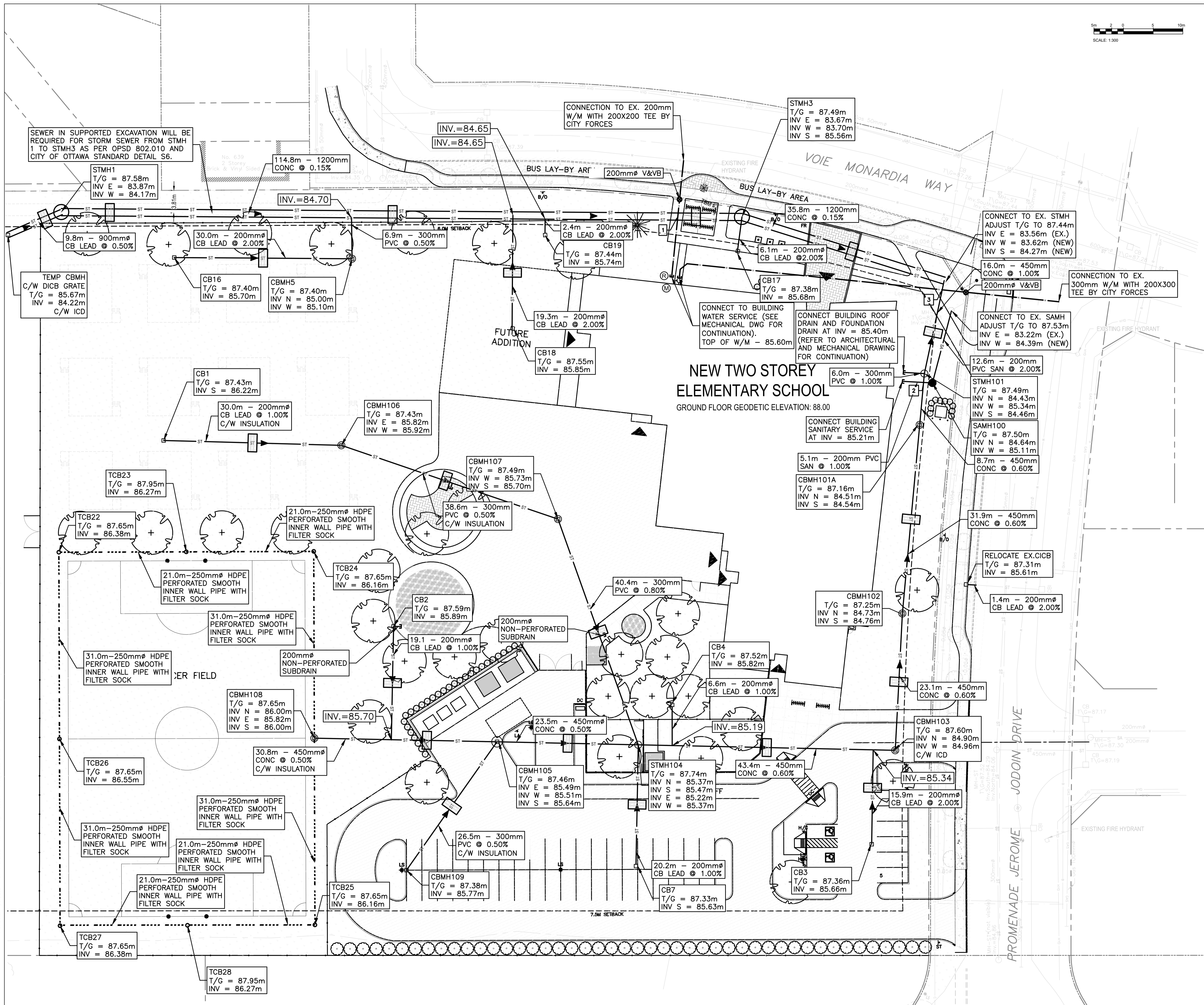
EDWARD J. CUHACI & ASSOCIATES ARCHITECTS Inc.
 171 Slater St, Suite 100, Ottawa, Ontario, K1P 5H7
 Fax: (613) 236-1944 Telephone: (613) 236-7135 E-mail: info@cuhaci.com

PROJECT TITLE/TITRE DU PROJET
ÉCOLE ÉLÉMENTAIRE PUBLIQUE ORLÉANS SUD
 675 MONARDIA WAY
 OTTAWA, ONTARIO

CONSEIL DES ÉCOLES PUBLIQUES DE L'EST DE L'ONTARIO
 2445 BOUL. ST-LAURENT, OTTAWA, ON

DRAWING TITLE/TITRE DU DESSIN
GRADING PLAN

SCALE ECHELLE	1:300	PROJ. No. 0003850-9668	ISSUE No. 6	REV. No. 0
DRAWN BY DESSINE PAR	ST-RVT	DRAWING/DESSIN		
CHECKED BY VÉRIFIÉ PAR	DY	C03		
DATE	JANUARY 2024	ACAD FILE/FICHER: 0003850-9668 C01-8.dwg		



NO.	REV.	DATE	ISSUE
6	0	2024/01/17	ISSUED FOR SITE PLAN CONTROL
5	0	2023/11/24	ISSUED FOR SITE PLAN CONTROL
4	0	2023/11/17	ISSUED FOR COORDINATION
3	0	2023/09/28	ISSUED FOR BUILDING PERMIT
2	0	2023/09/21	ISSUED FOR SITE PLAN CONTROL

LES IDÉES, CONCEPTS, DISPOSITIONS ET PLANS MONTRÉS OU REPRÉSENTÉS PAR CE DESSIN APPARTIENNENT À EDWARD J. CUHACI AND ASSOCIATES ARCHITECTS INC. ET ONT ÉTÉ CRÉÉS, DÉVELOPPÉS POUR ÊTRE UTILISÉS DANS LE CADRE DU PRÉSENT PROJET. ILS NE DOIVENT PAS ÊTRE UTILISÉS À D'AUTRES FINS NI COMMUNIQUÉS À QUI QUE CE SOIT SANS LA PERMISSION ÉCRITE DE EDWARD J. CUHACI AND ASSOCIATES ARCHITECTS INC.

L'ARCHITECTE DÉCLINE TOUTE RESPONSABILITÉ DÉCOULANT DE PROBLÈMES FAISANT SUITE AU NON RESPECT DES PLANS ET DEVIS OU DE L'INTENTION DU CONCEPT QU'ILS TRANSMETTENT, OU DE TOUTS PROBLÈMES POUVANT RÉSULTER DU DÉFAUT DE TIERS D'OBTENIR OU DE SUIVRE LES INSTRUCTIONS DE L'ARCHITECTE RELATIVEMENT AUX ERREURS, OMISSIONS, INCOHÉRENCES, AMBIGUITÉS OU CONTRADICTIONS ALLEGÉES.

L'ENTREPRENEUR DOIT VÉRIFIER TOUTES LES DIMENSIONS SUR PLACE ET INFORMER L'ARCHITECTE DE TOUT ÉCART AVANT LE DÉBUT DES TRAVAUX. NE PAS MESURER LES DESSINS À L'ÉCHELLE.

ALL IDEAS, DESIGNS, ARRANGEMENTS, AND PLANS INDICATED OR REPRESENTED BY THIS DRAWING ARE OWNED BY AND THE PROPERTY OF EDWARD J. CUHACI AND ASSOCIATES INC. AND WERE CREATED, EVOLVED, AND DEVELOPED FOR USE ON AND IN CONNECTION WITH THE SPECIFIED PROJECT. NONE OF THE IDEAS, DESIGNS, ARRANGEMENTS OR PLANS SHALL BE USED BY OR DISCLOSED TO ANY PERSON, FIRM, OR CORPORATION FOR ANY PURPOSE WHATSOEVER WITHOUT THE WRITTEN PERMISSION OF EDWARD J. CUHACI AND ASSOCIATES INC.

THE ARCHITECT WAIVES ANY AND ALL RESPONSIBILITY AND LIABILITY FOR PROBLEMS WHICH ARISE FROM FAILURE TO FOLLOW THESE PLANS, SPECIFICATIONS, AND THE DESIGN INTENT THEY CONVEY, OR FOR PROBLEMS WHICH ARISE FROM OTHERS' FAILURE TO OBTAIN AND/OR FOLLOW THE ARCHITECT'S GUIDANCE WITH RESPECT TO ANY ERRORS, OMISSIONS, INCONSISTENCIES, AMBIGUITIES OR CONFLICTS WHICH ARE ALLEGED.

CONTRACTOR TO VERIFY ALL DIMENSIONS AND NOTIFY THE ARCHITECT OF ANY DISCREPANCIES BEFORE WORK COMMENCES. DO NOT SCALE DRAWINGS

EDWARD J. CUHACI & ASSOCIATES ARCHITECTS Inc.
 171 Slater St, Suite 100, Ottawa, Ontario, K1P 5H7
 Fax: (613) 236-1944 Telephone: (613) 236-7135 E-mail: info@cuhaci.com

PROJECT TITLE/TITRE DU PROJET
ÉCOLE ÉLÉMENTAIRE PUBLIQUE ORLÉANS SUD
 675 MONARDIA WAY
 OTTAWA, ONTARIO

CONSEIL DES ÉCOLES PUBLIQUES DE L'EST DE L'ONTARIO
 2445 BOUL. ST-LAURENT, OTTAWA, ON

DRAWING TITLE/TITRE DU DESSIN
SERVICING PLAN

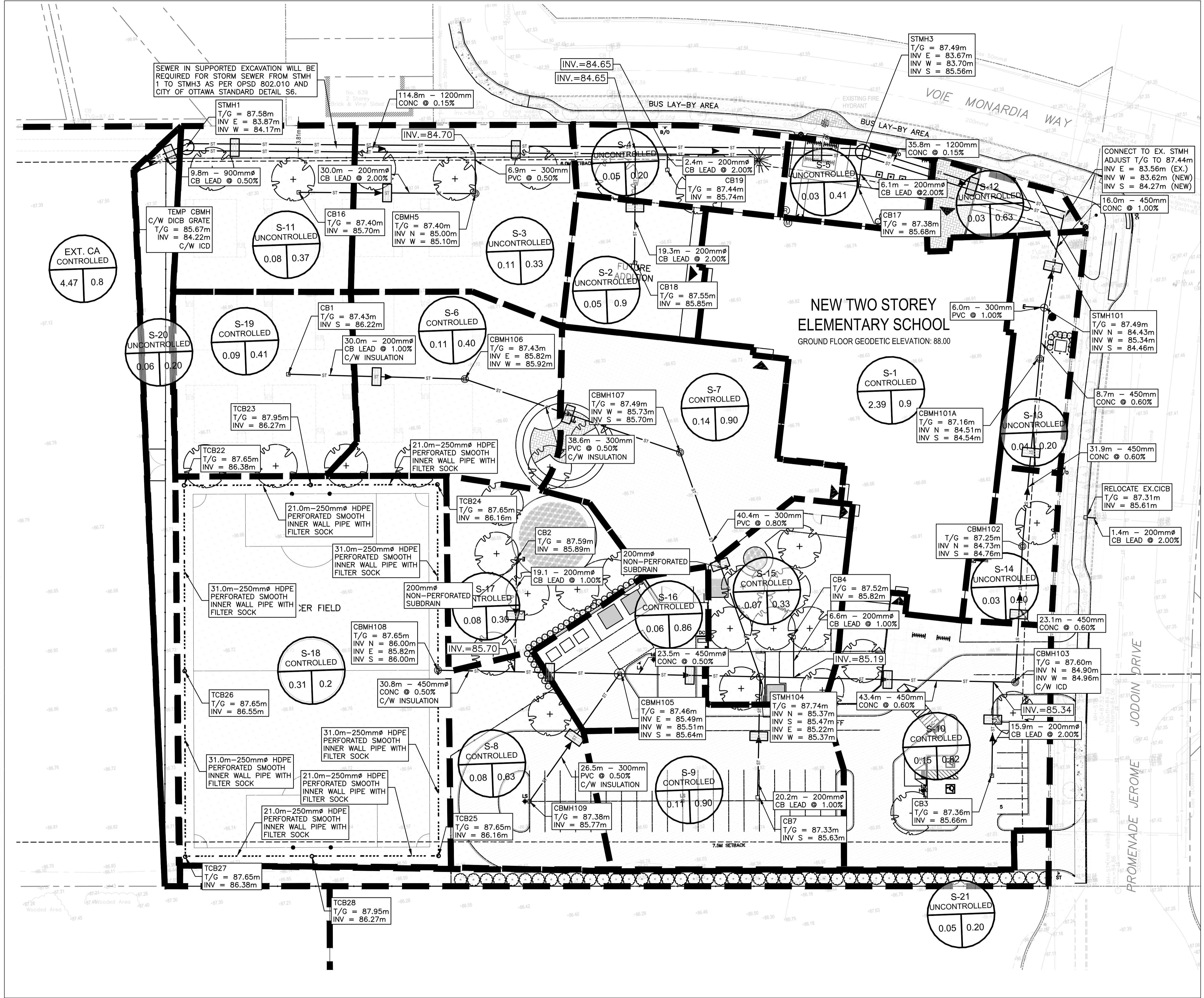
SCALE	PROJ. No.	ISSUE No.	REV. No.
ECHELLE	1:300	0003850-9668	6 0

DRAWN BY / DESSINÉ PAR: ST-RVT
 CHECKED BY / VÉRIFIÉ PAR: DY
 DATE: JANUARY 2024

ACAD FILE/FICHER: 0003850-9668 C04-8.dwg

C04

D07-12-23-0102



- 6 0 2024/01/17 ISSUED FOR SITE PLAN CONTROL
- 5 0 2023/11/24 ISSUED FOR SITE PLAN CONTROL
- 4 0 2023/11/17 ISSUED FOR COORDINATION
- 3 0 2023/09/28 ISSUED FOR BUILDING PERMIT
- 2 0 2023/09/21 ISSUED FOR SITE PLAN CONTROL

LES IDÉES, CONCEPTS, DISPOSITIONS ET PLANS MONTRÉS OU REPRÉSENTÉS PAR CE DESSIN APPARTIENNENT À EDWARD J. CUHACI AND ASSOCIATES ARCHITECTS INC. ET ONT ÉTÉ CRÉÉS, DÉVELOPPÉS POUR ÊTRE UTILISÉS DANS LE CADRE DU PRÉSENT PROJET. ILS NE DOIVENT PAS ÊTRE UTILISÉS À D'AUTRES FINS NI COMMUNIQUÉS À QUI QUE CE SOIT SANS LA PERMISSION ÉCRITE DE EDWARD J. CUHACI AND ASSOCIATES ARCHITECTS INC.

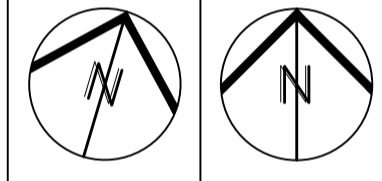
L'ARCHITECTE DÉCLINE TOUTE RESPONSABILITÉ DÉCOULANT DE PROBLÈMES FAISANT SUITE AU NON RESPECT DES PLANS ET DEVIS OU DE L'INTENTION DU CONCEPT QU'ILS TRANSMETTENT, OU DE TOUTS PROBLÈMES POUVANT RÉSULTER DU DÉFAUT DE TIERS D'OBTENIR OU DE SUIVRE LES INSTRUCTIONS DE L'ARCHITECTE RELATIVEMENT AUX ERREURS, OMISSIONS, INCOHÉRENCES, AMBIGUITÉS OU CONTRADICTIONS ALLEGÉES.

L'ENTREPRENEUR DOIT VÉRIFIER TOUTES LES DIMENSIONS SUR PLACE ET INFORMER L'ARCHITECTE DE TOUT ÉCART AVANT LE DÉBUT DES TRAVAUX. NE PAS MESURER LES DESSINS À L'ÉCHELLE.


ALL IDEAS, DESIGNS, ARRANGEMENTS, AND PLANS INDICATED OR REPRESENTED BY THIS DRAWING ARE OWNED BY AND THE PROPERTY OF EDWARD J. CUHACI AND ASSOCIATES INC. AND WERE CREATED, EVOLVED, AND DEVELOPED FOR USE ON AND IN CONNECTION WITH THE SPECIFIED PROJECT. NONE OF THE IDEAS, DESIGNS, ARRANGEMENTS OR PLANS SHALL BE USED BY OR DISCLOSED TO ANY PERSON, FIRM, OR CORPORATION FOR ANY PURPOSE WHATSOEVER WITHOUT THE WRITTEN PERMISSION OF EDWARD J. CUHACI AND ASSOCIATES INC.

THE ARCHITECT WAIVES ANY AND ALL RESPONSIBILITY AND LIABILITY FOR PROBLEMS WHICH ARISE FROM FAILURE TO FOLLOW THESE PLANS, SPECIFICATIONS, AND THE DESIGN INTENT THEY CONVEY, OR FOR PROBLEMS WHICH ARISE FROM OTHERS' FAILURE TO OBTAIN AND/OR FOLLOW THE ARCHITECT'S GUIDANCE WITH RESPECT TO ANY ERRORS, OMISSIONS, INCONSISTENCIES, AMBIGUITIES OR CONFLICTS WHICH ARE ALLEGED.

CONTRACTOR TO VERIFY ALL DIMENSIONS AND NOTIFY THE ARCHITECT OF ANY DISCREPANCIES BEFORE WORK COMMENCES. DO NOT SCALE DRAWINGS



TRUE NORTH PLAN NORTH



LICENCED PROFESSIONAL ENGINEER
D. B. YANG
100230568
2024-01-17
PROVINCE OF ONTARIO

EDWARD J. CUHACI & ASSOCIATES ARCHITECTS Inc.
171 Slater St, Suite 100, Ottawa, Ontario, K1P 5H7
Fax: (613) 236-1944 Telephone: (613) 236-7135 E-mail: info@cuhaci.com

PROJECT TITLE/TITRE DU PROJET
ÉCOLE ÉLÉMENTAIRE PUBLIQUE ORLÉANS SUD
675 MONARDRIA WAY
OTTAWA, ONTARIO

CONSEIL DES ÉCOLES PUBLIQUES DE L'EST DE L'ONTARIO
2445 BOUL. ST-LAURENT, OTTAWA, ON

DRAWING TITLE/TITRE DU DESSIN
STORM DRAINAGE AREA PLAN

SCALE ECHELLE	1:300	PROJ. No 0003850-9668	ISSUE No 6	REV. No 0
DRAWN BY DESSINÉ PAR	ST-RVT	DRAWING/DESSIN		
CHECKED BY VÉRIFIÉ PAR		C05		
DATE	JANUARY 2024	ACAD FILE/FICHER: 0003850-9668 C01-8.dwg		



5m 2 0 5 10m
SCALE: 1:300



- 6 0 2024/01/17 ISSUED FOR SITE PLAN CONTROL
- 5 0 2023/11/24 ISSUED FOR SITE PLAN CONTROL
- 4 0 2023/11/17 ISSUED FOR COORDINATION
- 3 0 2023/09/28 ISSUED FOR BUILDING PERMIT
- 2 0 2023/09/21 ISSUED FOR SITE PLAN CONTROL

ISSUE NO.	REV. NO.	DATE	ISSUE

LES IDÉES, CONCEPTS, DISPOSITIONS ET PLANS MONTRÉS OU REPRÉSENTÉS PAR CE DESSIN APPARTIENNENT À EDWARD J. CUHACI AND ASSOCIATES ARCHITECTS INC. ET ONT ÉTÉ CRÉÉS, DÉVELOPPÉS POUR ÊTRE UTILISÉS DANS LE CADRE DU PRÉSENT PROJET. ILS NE DOIVENT PAS ÊTRE UTILISÉS À D'AUTRES FINS NI COMMUNIQUÉS À QUI QUE CE SOIT SANS LA PERMISSION ÉCRITE DE EDWARD J. CUHACI AND ASSOCIATES ARCHITECTS INC.

L'ARCHITECTE DÉCLINE TOUTE RESPONSABILITÉ DÉCOULANT DE PROBLÈMES FAISANT SUITE AU NON RESPECT DES PLANS ET DEVIS OU DE L'INTENTION DU CONCEPT QU'ILS TRANSMETTENT, OU DE TOUTS PROBLÈMES POUVANT RÉSULTER DU DÉFAUT DE TIERS D'OBTENIR OU DE SUIVRE LES INSTRUCTIONS DE L'ARCHITECTE RELATIVEMENT AUX ERREURS, OMISSIONS, INCOHÉRENCES, AMBIGUITÉS OU CONTRADICTIONS ALLEGUÉS.

L'ENTREPRENEUR DOIT VÉRIFIER TOUTES LES DIMENSIONS SUR PLACE ET INFORMER L'ARCHITECTE DE TOUT ÉCART AVANT LE DÉBUT DES TRAVAUX. NE PAS MESURER LES DESSINS À L'ÉCHELLE.

ALL IDEAS, DESIGNS, ARRANGEMENTS, AND PLANS INDICATED OR REPRESENTED BY THIS DRAWING ARE OWNED BY AND THE PROPERTY OF EDWARD J. CUHACI AND ASSOCIATES INC. AND WERE CREATED, EVOLVED, AND DEVELOPED FOR USE ON AND IN CONNECTION WITH THE SPECIFIED PROJECT. NONE OF THE IDEAS, DESIGNS, ARRANGEMENTS OR PLANS SHALL BE USED BY OR DISCLOSED TO ANY PERSON, FIRM, OR CORPORATION FOR ANY PURPOSE WHATSOEVER WITHOUT THE WRITTEN PERMISSION OF EDWARD J. CUHACI AND ASSOCIATES INC.

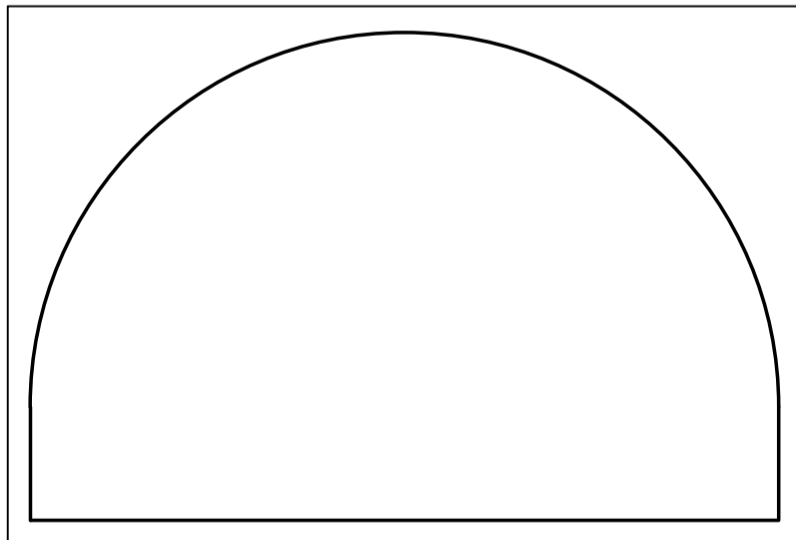
THE ARCHITECT WAIVES ANY AND ALL RESPONSIBILITY AND LIABILITY FOR PROBLEMS WHICH ARISE FROM FAILURE TO FOLLOW THESE PLANS, SPECIFICATIONS, AND THE DESIGN INTENT THEY CONVEY, OR FOR PROBLEMS WHICH ARISE FROM OTHERS' FAILURE TO OBTAIN AND/OR FOLLOW THE ARCHITECT'S GUIDANCE WITH RESPECT TO ANY ERRORS, OMISSIONS, INCONSISTENCIES, AMBIGUITIES OR CONFLICTS WHICH ARE ALLEGED.

CONTRACTOR TO VERIFY ALL DIMENSIONS AND NOTIFY THE ARCHITECT OF ANY DISCREPANCIES BEFORE WORK COMMENCES. DO NOT SCALE DRAWINGS

TRUE NORTH

PLAN NORTH

LICENSED PROFESSIONAL ENGINEER
D. B. YANG
100230568
2024-01-17
PROVINCE OF ONTARIO



EDWARD J. CUHACI & ASSOCIATES ARCHITECTS Inc.
171 Slater St., Suite 100, Ottawa, Ontario, K1P 5H7
Fax: (613) 236-1944 Telephone: (613) 236-7135 E-mail: info@cuhaci.com

PROJECT TITLE/TITRE DU PROJET
ÉCOLE ÉLÉMENTAIRE PUBLIQUE ORLÉANS SUD
675 MONARDIA WAY
OTTAWA, ONTARIO

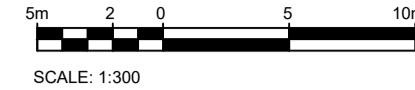
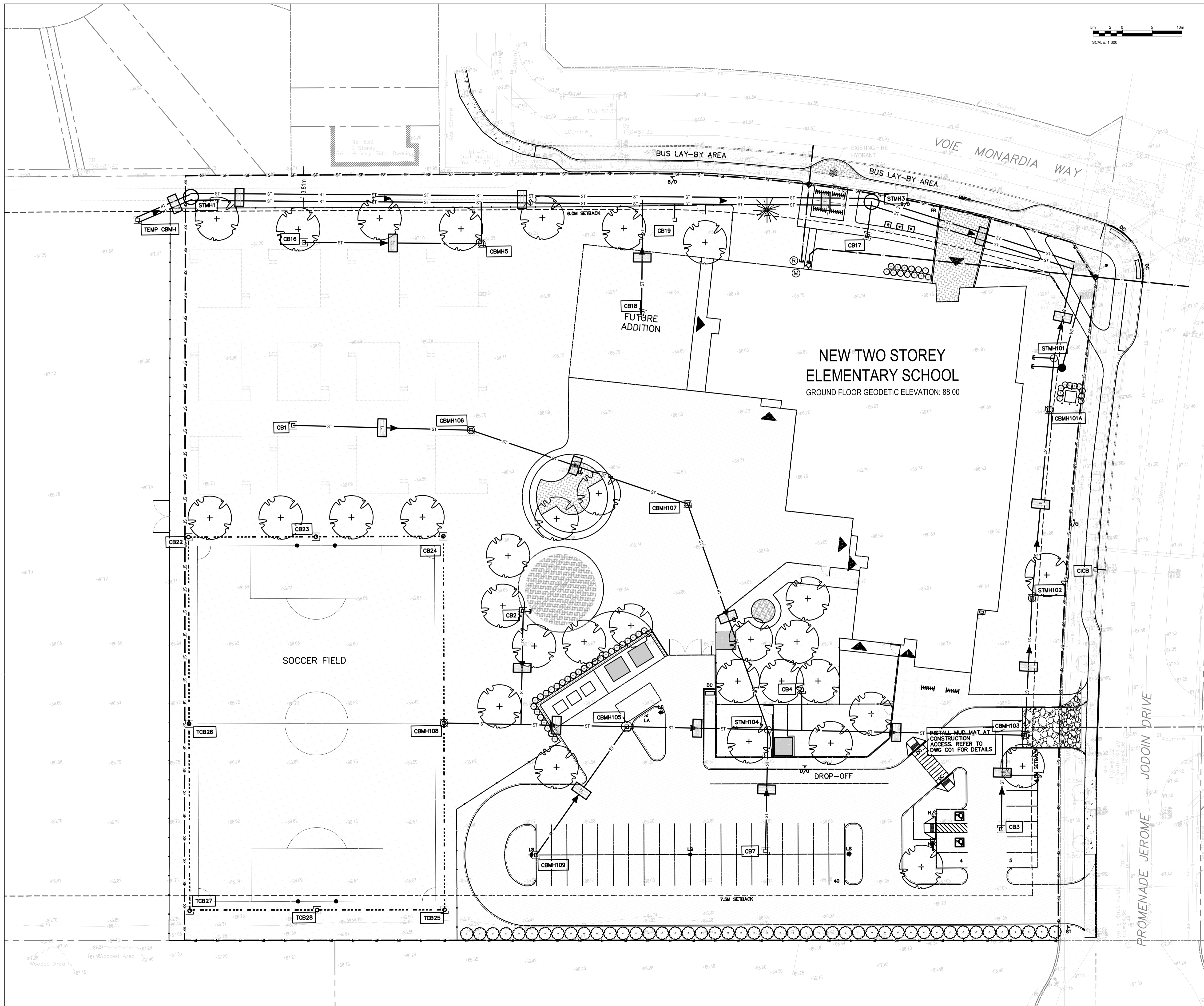
CONSEIL DES ÉCOLES PUBLIQUES DE L'EST DE L'ONTARIO
2445 BOUL. ST-LAURENT, OTTAWA, ON

DRAWING TITLE/TITRE DU DESSIN
PRE-DEVELOPMENT DRAINAGE AREA PLAN

SCALE ECHELLE	1:300	PROJ. No. 0003850-9668	ISSUE No. 6	REV. No. 0
DRAWN BY DESSINE PAR	ST-RVT	DRAWING/DESSIN		
CHECKED BY VÉRIFIÉ PAR	DY	C06		
DATE	JANUARY 2024	ACAD FILE/FICHIER: 0003850-9668 C01-8.dwg		

#####

D07-12-23-0102



6	0	2024/01/17	ISSUED FOR SITE PLAN CONTROL
5	0	2023/11/24	ISSUED FOR SITE PLAN CONTROL
4	0	2023/11/17	ISSUED FOR COORDINATION
3	0	2023/09/28	ISSUED FOR BUILDING PERMIT
2	0	2023/09/21	ISSUED FOR SITE PLAN CONTROL

ISSUE NO.	REV. NO.	DATE	ISSUE
-----------	----------	------	-------

LES IDÉES, CONCEPTS, DISPOSITIONS ET PLANS MONTRÉS OU REPRÉSENTÉS PAR CE DESSIN APPARTIENNENT À EDWARD J. CUHACI AND ASSOCIATES ARCHITECTS INC. ET ONT ÉTÉ CRÉÉS, ÉTÉ DÉVELOPPÉS POUR ÊTRE UTILISÉS DANS LE CADRE DU PRÉSENT PROJET. ILS NE DOIVENT PAS ÊTRE UTILISÉS À D'AUTRES FINS NI COMMUNIQUÉS À QUI QUE CE SOIT SANS LA PERMISSION ÉCRITE DE EDWARD J. CUHACI AND ASSOCIATES ARCHITECTS INC.

L'ARCHITECTE DÉCLINE TOUTE RESPONSABILITÉ DÉCOULANT DE PROBLÈMES FAISANT SUITE AU NON RESPECT DES PLANS ET DEVIS OU DE L'INTENTION DU CONCEPT QU'ILS TRANSMETTENT, OU DE TOUTS PROBLÈMES POUVANT RÉSULTER DU DÉFAUT DE TIERS D'OBTENIR OU DE SUIVRE LES INSTRUCTIONS DE L'ARCHITECTE RELATIVEMENT AUX ERREURS, OMISSIONS, INCOHÉRENCES, AMBIGUITÉS OU CONTRADICTIONS ALLEGUÉS.

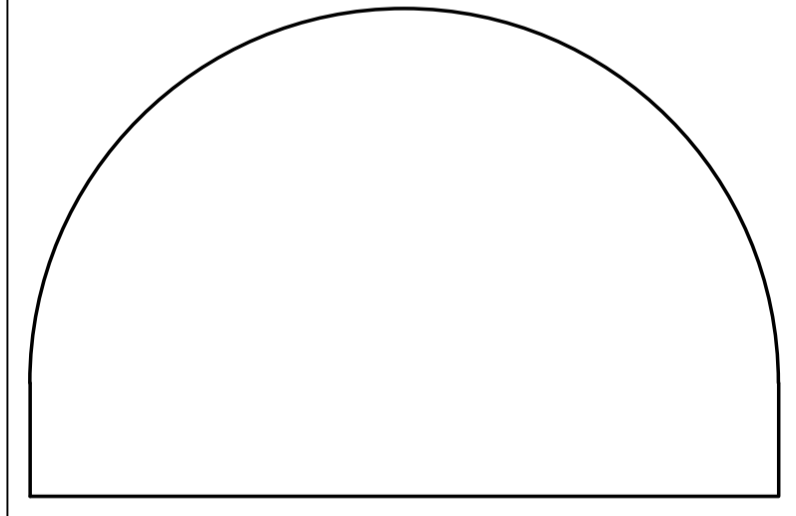
L'ENTREPRENEUR DOIT VÉRIFIER TOUTES LES DIMENSIONS SUR PLACE ET INFORMER L'ARCHITECTE DE TOUT ÉCART AVANT LE DÉBUT DES TRAVAUX. NE PAS MESURER LES DESSINS À L'ÉCHELLE.

ALL IDEAS, DESIGNS, ARRANGEMENTS, AND PLANS INDICATED OR REPRESENTED BY THIS DRAWING ARE OWNED BY AND THE PROPERTY OF EDWARD J. CUHACI AND ASSOCIATES INC. AND WERE CREATED, EVOLVED, AND DEVELOPED FOR USE ON AND IN CONNECTION WITH THE SPECIFIED PROJECT. NONE OF THE IDEAS, DESIGNS, ARRANGEMENTS OR PLANS SHALL BE USED BY OR DISCLOSED TO ANY PERSON, FIRM, OR CORPORATION FOR ANY PURPOSE WHATSOEVER WITHOUT THE WRITTEN PERMISSION OF EDWARD J. CUHACI AND ASSOCIATES INC.

THE ARCHITECT WAIVES ANY AND ALL RESPONSIBILITY AND LIABILITY FOR PROBLEMS WHICH ARISE FROM FAILURE TO FOLLOW THESE PLANS, SPECIFICATIONS, AND THE DESIGN INTENT THEY CONVEY, OR FOR PROBLEMS WHICH ARISE FROM OTHERS' FAILURE TO OBTAIN AND/OR FOLLOW THE ARCHITECT'S GUIDANCE WITH RESPECT TO ANY ERRORS, OMISSIONS, INCONSISTENCIES, AMBIGUITIES OR CONFLICTS WHICH ARE ALLEGED.

CONTRACTOR TO VERIFY ALL DIMENSIONS AND NOTIFY THE ARCHITECT OF ANY DISCREPANCIES BEFORE WORK COMMENCES. DO NOT SCALE DRAWINGS

TRUE NORTH PLAN NORTH



EDWARD J. CUHACI & ASSOCIATES ARCHITECTS Inc.
 171 Slater St, Suite 100, Ottawa, Ontario, K1P 5H7
 Fax: (613) 236-1944 Telephone: (613) 236-7135 E-mail: info@cuhaci.com

PROJECT TITLE/TITRE DU PROJET
ÉCOLE ÉLÉMENTAIRE PUBLIQUE ORLÉANS SUD
 675 MONARDIA WAY
 OTTAWA, ONTARIO

CONSEIL DES ÉCOLES PUBLIQUES DE L'EST DE L'ONTARIO
 2445 BOUL. ST-LAURENT, OTTAWA, ON

DRAWING TITLE/TITRE DU DESSIN
EROSION AND SEDIMENT CONTROL PLAN

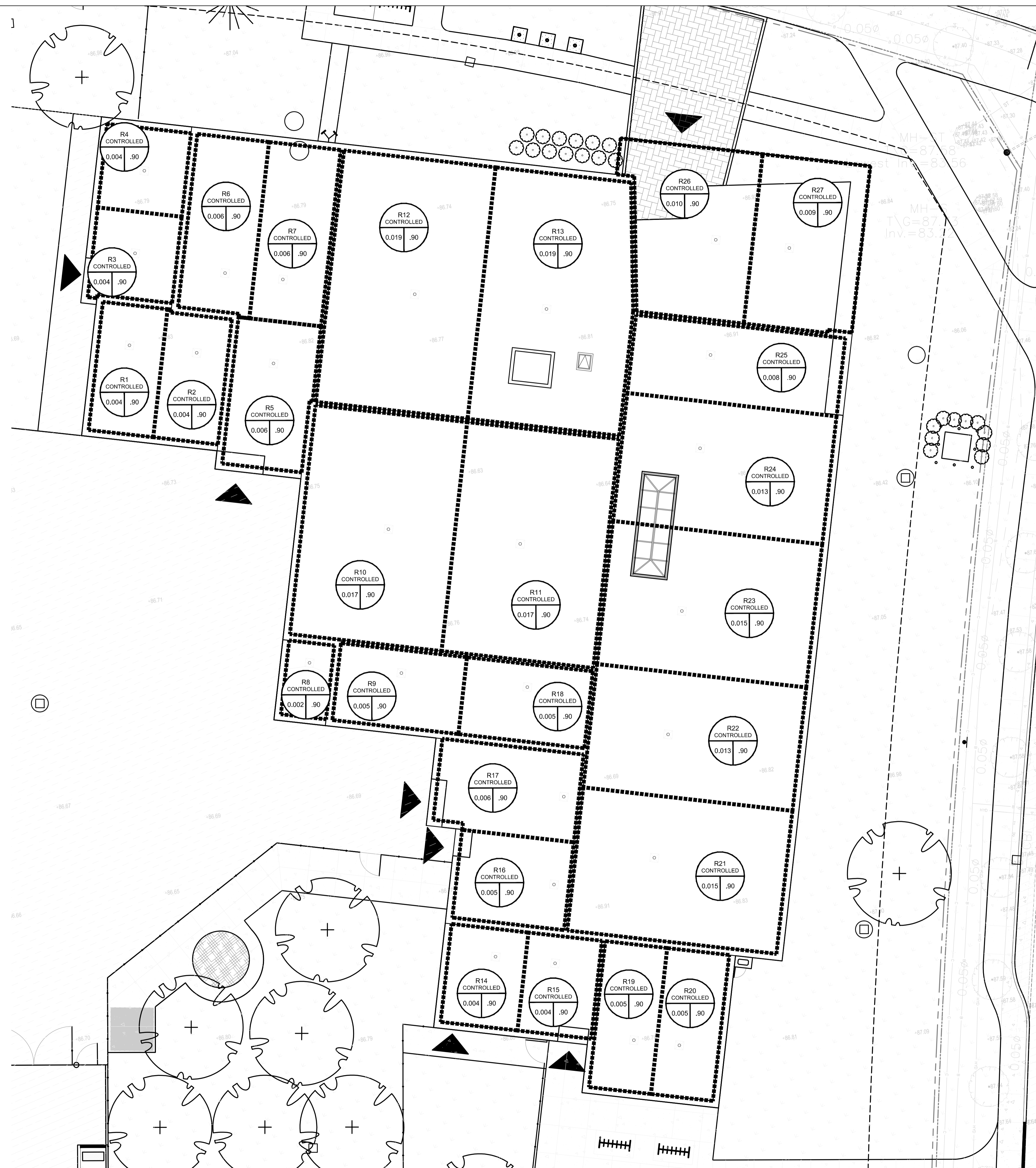
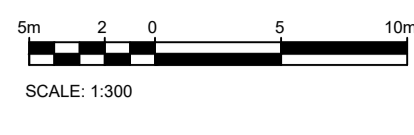
SCALE ECHELLE	1:300	PROJ. No. 0003850-9668	ISSUE No. 6	REV. No. 0
DRAWN BY DESSINE PAR	ST-RVT	DRAWING/DESSIN		
CHECKED BY VÉRIFIÉ PAR	DY	C07		
DATE	JANUARY 2024	ACAD FILE/FICHER: 0003850-9668 C01-8.dwg		

D07-12-23-0102

#####

Roof drain	Area (m ²)	Depth (m)	Theoretical rooftop storage volume (m ³)	Storage volume (m ³)	Max flow rate (l/s)
1	41.6	0.15	6.2	5.0	0.95
2	40.7	0.15	6.1	4.9	0.95
3	36.4	0.15	5.5	4.4	0.95
4	35.5	0.15	5.3	4.3	0.95
5	59.6	0.15	8.9	7.2	0.95
6	62	0.15	9.3	7.4	0.95
7	64.1	0.15	9.6	7.7	0.95
8	16.7	0.15	2.5	2.0	0.95
9	48.7	0.15	7.3	5.8	0.95
10	174.6	0.15	26.2	21.0	0.95
11	174.6	0.15	26.2	21.0	0.95
12	191.8	0.15	28.8	23.0	0.95
13	186.5	0.15	28.0	22.4	0.95
14	37.9	0.15	5.7	4.5	0.95
15	36.2	0.15	5.4	4.3	0.95
16	49.3	0.15	7.4	5.9	0.95
17	61.3	0.15	9.2	7.4	0.95
18	48.7	0.15	7.3	5.8	0.95
19	45.4	0.15	6.8	5.4	0.95
20	45.4	0.15	6.8	5.4	0.95
21	150.5	0.15	22.6	18.1	0.95
22	129.9	0.15	19.5	15.6	0.95
23	150.5	0.15	22.6	18.1	0.95
24	134.7	0.15	20.2	16.2	0.95
25	82.2	0.15	12.3	9.9	0.95
26	63.6	0.15	9.5	7.6	0.95
27	69.1	0.15	10.4	8.3	0.95
Total	2237.5		268.5	215.6	

ROOF DRAIN PER WATTS ADJUSTABLE FLOW CONTROL FOR ROOF DRAINS OR APPROVED EQUIVALENT.



WATTS Adjustable Accutrol Weir Tag: _____ Adjustable Flow Control for Roof Drains

ADJUSTABLE ACCUTROL (for Large Sump Roof Drains only)
 For more flexibility in controlling flow with heads deeper than 2", Watts Drainage offers the Adjustable Accutrol. The Adjustable Accutrol Weir is designed with a single parabolic opening that can be covered to restrict flow above 2" of head to less than 5 gpm per inch, up to 6" of head. To adjust the flow rate for depths over 2" of head, set the slot in the adjustable upper cone according to the flow rate required. Refer to Table 1 below.
 Note: Flow rates are directly proportional to the amount of weir opening that is exposed.

EXAMPLE:
 For example, if the adjustable upper cone is set to cover 1/2 of the weir opening, flow rates above 2" of head will be restricted to 2-1/2 gpm per inch of head.
 Therefore, at 3" of head, the flow rate through the Accutrol Weir that has 1/2 the slot exposed will be:
 [5 gpm (per inch of head) x 2 inches of head] + 2-1/2 gpm (for the third inch of head) = 12-1/2 gpm.

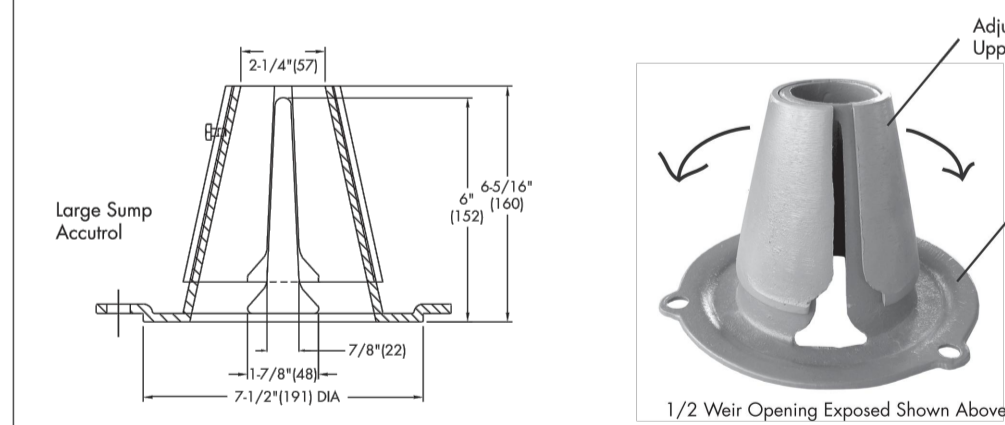


TABLE 1. Adjustable Accutrol Flow Rate Settings

Weir Opening Exposed	1"	2"	3"	4"	5"	6"
Fully Exposed	5	10	15	20	25	30
3/4	5	10	13.75	17.5	21.25	25
1/2	5	10	12.5	15	17.5	20
1/4	5	10	11.25	12.5	13.75	15
Closed	5	5	5	5	5	5

Job Name _____ Contractor _____
 Job Location _____ Contractor's P.O. No. _____
 Engineer _____ Representative _____

Watts product specifications in U.S. customary units and metric are approximate and are provided for reference only. For precise measurements, please contact Watts Technical Services. Watts reserves the right to change or modify product design, construction, specifications, or materials without prior notice and without incurring any obligation to make such changes and modifications on Watts products previously or subsequently sold.
 USA: Tel: (800) 338-3261 • Fax: (800) 248-3024 • Watts.com
 Canada: Tel: (905) 332-4090 • Fax: (905) 332-7068 • Watts.ca
 Latin America: Tel: (52) 81-1001-8800 • Fax: (52) 81-8000-7091 • Watts.com
 ES-WD-FD-ACCUTROL-ADU-CAN 1615 © 2016 Watts



- 6 0 2024/01/17 ISSUED FOR SITE PLAN CONTROL
- 5 0 2023/11/24 ISSUED FOR SITE PLAN CONTROL
- 4 0 2023/11/17 ISSUED FOR COORDINATION
- 3 0 2023/09/28 ISSUED FOR BUILDING PERMIT
- 2 0 2023/09/21 ISSUED FOR SITE PLAN CONTROL

ISSUE NO.	REV. NO.	DATE	ISSUE

LES IDÉES, CONCEPTS, DISPOSITIONS ET PLANS MONTRÉS OU REPRÉSENTÉS PAR CE DESSIN APPARTIENNENT À EDWARD J. CUHACI AND ASSOCIATES ARCHITECTS INC. ET ONT ÉTÉ CRÉÉS, ET DÉVELOPPÉS POUR ÊTRE UTILISÉS DANS LE CADRE DU PRÉSENT PROJET. ILS NE DOIVENT PAS ÊTRE UTILISÉS À D'AUTRES FINS NI COMMUNIQUÉS À QUI QUE CE SOIT SANS LA PERMISSION ÉCRITE DE EDWARD J. CUHACI AND ASSOCIATES ARCHITECTS INC.

L'ARCHITECTE DÉCLINE TOUTE RESPONSABILITÉ DÉCOULANT DE PROBLÈMES FAISANT SUITE AU NON RESPECT DES PLANS ET DEVIS OU DE L'INTENTION DU CONCEPT QU'ILS TRANSMETTENT, OU DE TOUTS PROBLÈMES POUVANT RÉSULTER DU DÉFAUT DE TIERS D'OBTENIR OU DE SUIVRE LES INSTRUCTIONS DE L'ARCHITECTE RELATIVEMENT AUX ERREURS, OMISSIONS, INCOHÉRENCES, AMBIGÜITÉS OU CONTRADICTIONS ALLEGÉES.

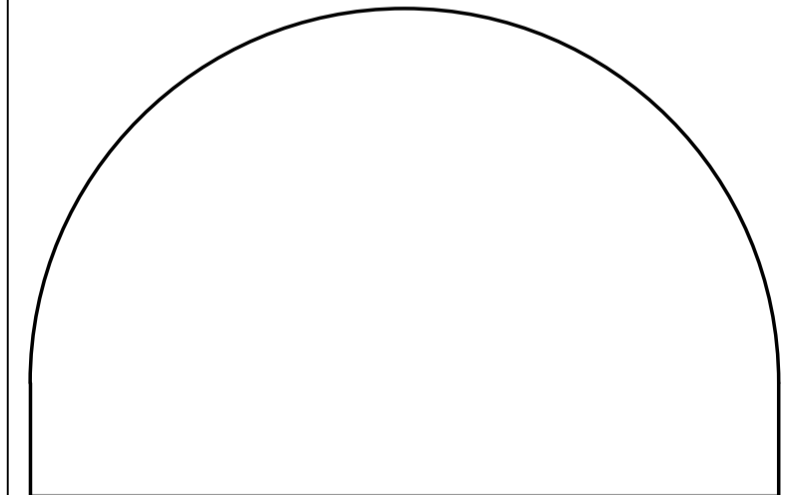
L'ENTREPRENEUR DOIT VÉRIFIER TOUTES LES DIMENSIONS SUR PLACE ET INFORMER L'ARCHITECTE DE TOUT ÉCART AVANT LE DÉBUT DES TRAVAUX. NE PAS MESURER LES DESSINS À L'ÉCHELLE.

ALL IDEAS, DESIGNS, ARRANGEMENTS, AND PLANS INDICATED OR REPRESENTED BY THIS DRAWING ARE OWNED BY AND THE PROPERTY OF EDWARD J. CUHACI AND ASSOCIATES INC. AND WERE CREATED, EVOLVED, AND DEVELOPED FOR USE ON AND IN CONNECTION WITH THE SPECIFIED PROJECT. NONE OF THE IDEAS, DESIGNS, ARRANGEMENTS OR PLANS SHALL BE USED BY OR DISCLOSED TO ANY PERSON, FIRM, OR CORPORATION FOR ANY PURPOSE WHATSOEVER WITHOUT THE WRITTEN PERMISSION OF EDWARD J. CUHACI AND ASSOCIATES INC.

THE ARCHITECT WAIVES ANY AND ALL RESPONSIBILITY AND LIABILITY FOR PROBLEMS WHICH ARISE FROM FAILURE TO FOLLOW THESE PLANS, SPECIFICATIONS, AND THE DESIGN INTENT THEY CONVEY, OR FOR PROBLEMS WHICH ARISE FROM OTHERS' FAILURE TO OBTAIN AND/OR FOLLOW THE ARCHITECT'S GUIDANCE WITH RESPECT TO ANY ERRORS, OMISSIONS, INCONSISTENCIES, AMBIGÜITIES OR CONFLICTS WHICH ARE ALLEGED.

CONTRACTOR TO VERIFY ALL DIMENSIONS AND NOTIFY THE ARCHITECT OF ANY DISCREPANCIES BEFORE WORK COMMENCES. DO NOT SCALE DRAWINGS

TRUE NORTH PLAN NORTH



EDWARD J. CUHACI & ASSOCIATES ARCHITECTS Inc.
 171 Slater St, Suite 100, Ottawa, Ontario, K1P 5H7
 Fax: (613) 236-1944 Telephone: (613) 236-7135 E-mail: info@cuhaci.com

PROJECT TITLE/TITRE DU PROJET
ÉCOLE ÉLÉMENTAIRE PUBLIQUE ORLÉANS SUD
 675 MONARDIA WAY
 OTTAWA, ONTARIO

CONSEIL DES ÉCOLES PUBLIQUES DE L'EST DE L'ONTARIO
 2445 BOUL. ST-LAURENT, OTTAWA, ON

DRAWING TITLE/TITRE DU DESSIN
ROOF DRAINAGE AREA PLAN

SCALE	PROJ. No.	ISSUE No.	REV. No.
ECHELLE: 1:150	0003850-9668	6	0
DRAWN BY	ST-RVT	DRAWING/DESSIN	
CHECKED BY	DY		
DATE	JANUARY 2024		

C08

ACAD FILE/FICHER: 0003850-9668 C01-8.000

D07-12-23-0102

#####