



*Allan Hamlin*

ALLISON HAMLIN  
MANAGER (A), DEVELOPMENT REVIEW WEST  
PLANNING, REAL ESTATE & ECONOMIC DEVELOPMENT  
DEPARTMENT, CITY OF OTTAWA

**APPROVED**  
By Allison Hamlin at 3:20 pm, Dec 21, 2023



North

Revisions

No.	By	Description	Date
01	NH	ISSUED FOR REVIEW	2023/02/10
02	NH	REVISED FOR REVIEW	2023/02/14
03	NH	REVISED FOR REVIEW	2023/02/15
04	NH	ISSUED FOR SPA	2023/02/15
05	KE	REVISED FOR SPA	2023/05/30
06	KE	ISSUED FOR SPA	2023/10/20

Project

**MERIVALE ROAD  
INDUSTRIAL  
DEVELOPMENT**

1881/1883 MERIVALE RD., Ottawa

Drawing  
**EXTERIOR ELEVATIONS  
BUILDING B**

Scale AS NOTED

Drawn JAS

Checked

Stamp

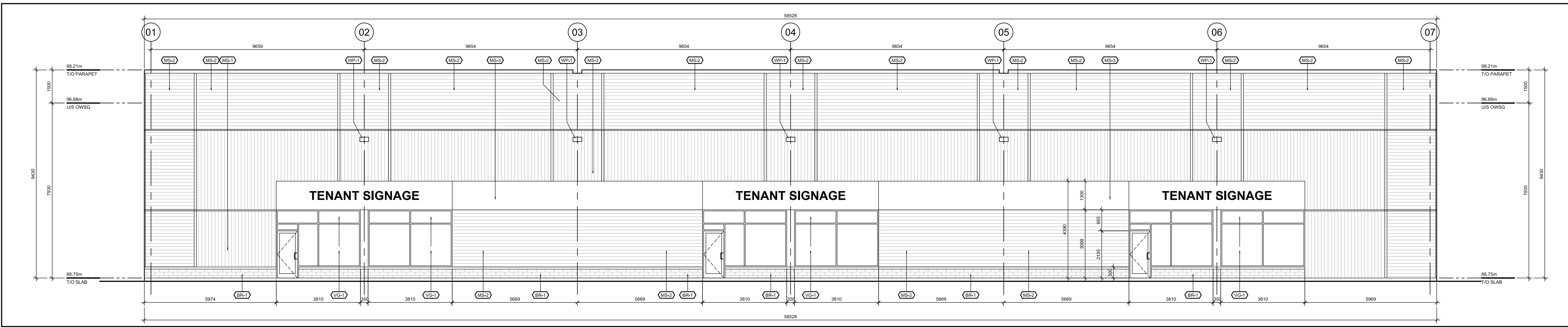


Project No. 19-120

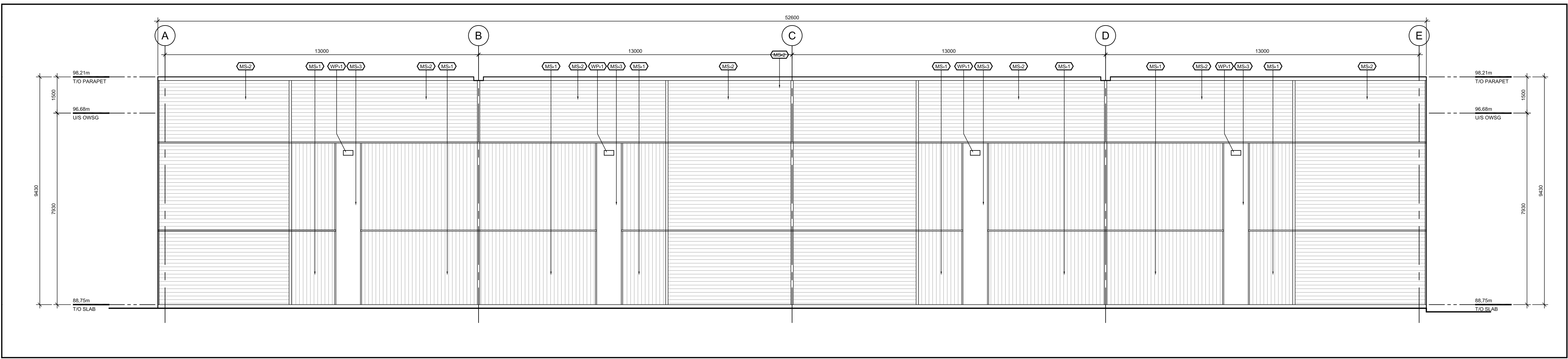
Date SEPT. 2022

Drawing No. **A202**

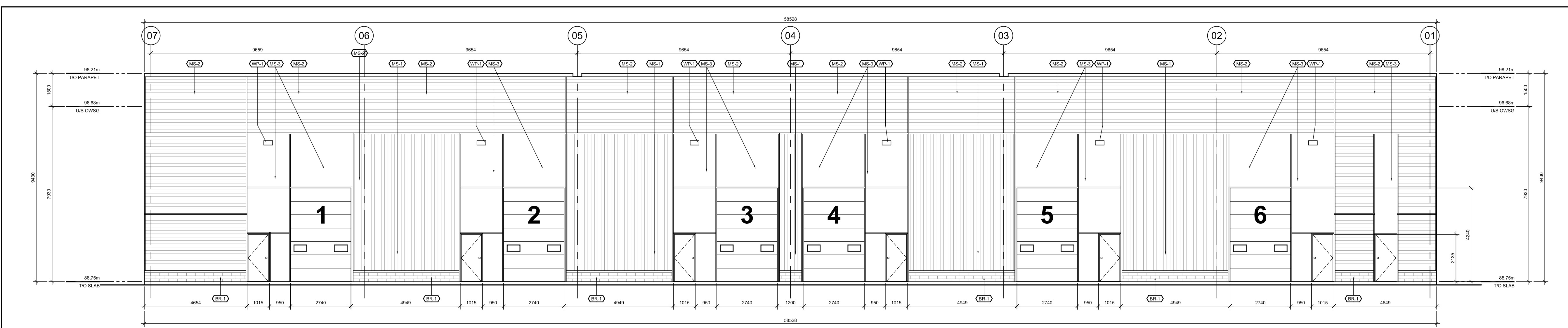
PLAN NO.



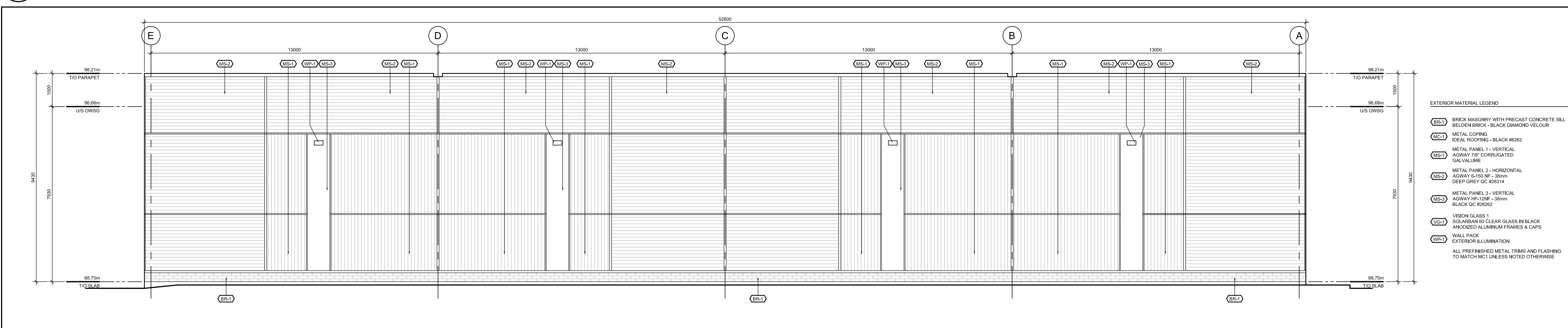
01 NORTH ELEVATION  
A202 1:100



02 WEST ELEVATION  
A202 1:100



03 SOUTH ELEVATION  
A202 1:100



04 EAST ELEVATION  
A202 1:100

- EXTERIOR MATERIAL LEGEND**
- (MB) BRICK MASONRY WITH PRECAST CONCRETE SILL
  - (MB) BELDEN BRICK - BLACK DIAMOND VELOUR
  - (MR) METAL COATING
  - (MR) IDEAL ROOFING - BLACK R80R2
  - (MS) METAL PANEL 1 - VERTICAL AGWAY 782 CORRUGATED GALVALUME
  - (MS) METAL PANEL 2 - HORIZONTAL AGWAY 6100 NF - 38mm DEEP GREY OC R80R14
  - (MS) METAL PANEL 3 - VERTICAL AGWAY 4812 - 38mm BLACK OC R80R2
  - (VC) VISION GLASS 1 SOLARBAN 60 CLEAR GLASS IN BLACK ANODIZED ALUMINUM FRAMES & CAPS
  - (WF) WALL PACK EXTERIOR ILLUMINATION
  - (FF) ALL PREFABRICATED METAL TRIMS AND FLASHING TO MATCH MC1 UNLESS NOTED OTHERWISE