

LEGEND

- PROPOSED DECIDUOUS TREE
- PROPOSED SHRUBS / PERENNIALS
- PROPOSED RIVERSTONE
- PROPOSED SOD
- PROPOSED PRECAST CONCRETE PAVERS
- TREE PROTECTION FENCE
- PROPOSED LOOP BIKE RACK
- EXISTING TREE TO REMAIN
- EXISTING TREE TO BE REMOVED

| No. | Issue | Date | MM/DD/YY | DR | CK |
|-----|------------------------------|------------|----------|----|----|
| 4 | REVISED PER CITY COMMENTS | 11/22/2023 | ML | JL | |
| 3 | REVISED PER CITY COMMENTS | 07/25/2023 | ML | JL | |
| 2 | REVISED PER NEW SITE PLAN | 05/29/2023 | ML | JL | |
| 1 | ISSUED FOR SITE PLAN CONTROL | 11/22/2022 | ML | JL | |

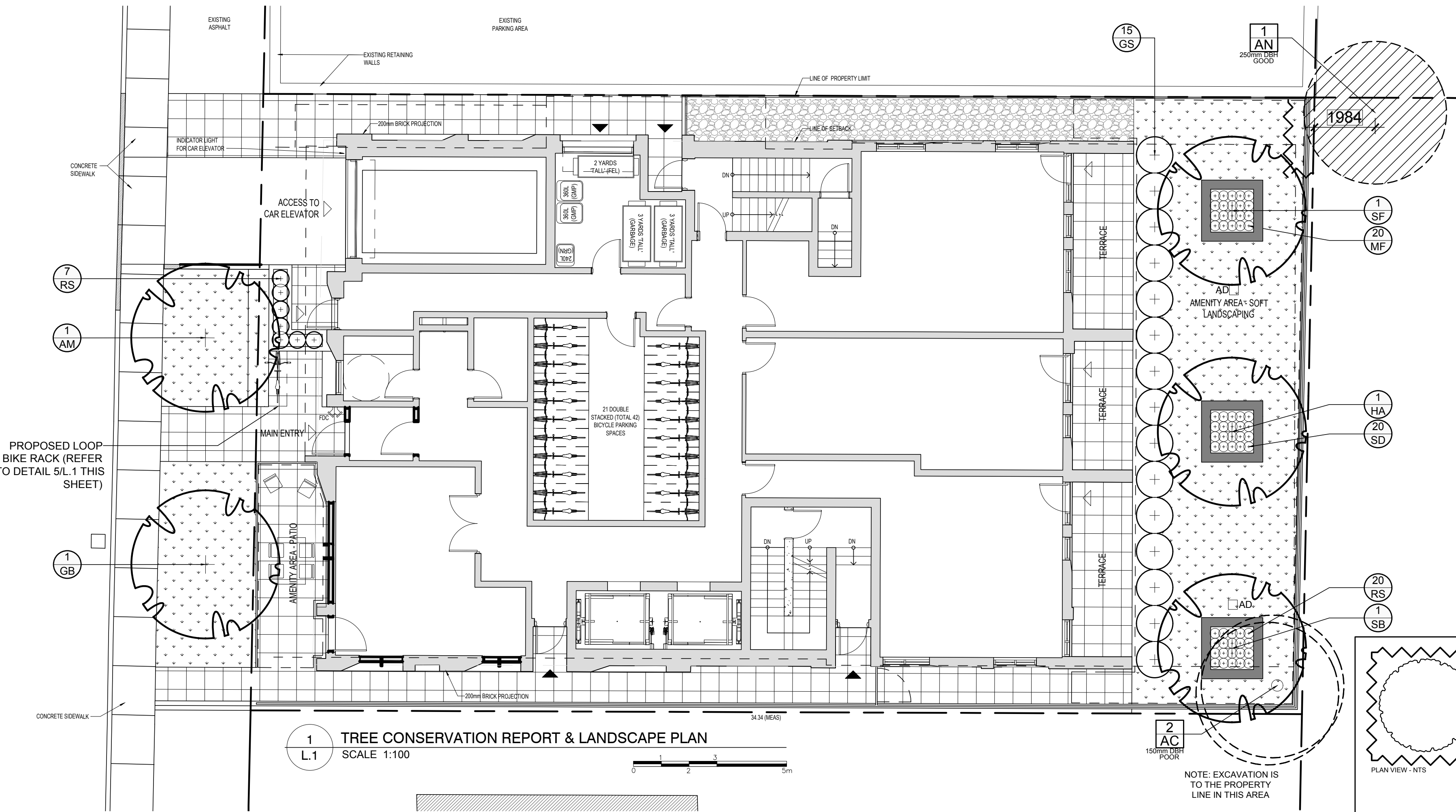
JAMES B. LENNOX & ASSOCIATES INC.
LANDSCAPE ARCHITECTS
3332 CARLING AVE. OTTAWA, ONTARIO K2M 1S8
Tel: (613) 722-5168 Fax: (866) 343-3942

PROJECT
PROPOSED NINE STOREY RESIDENTIAL BUILDING
230-232 LISGAR STREET, OTTAWA ON

DRAWING
TREE CONSERVATION REPORT & LANDSCAPE PLAN

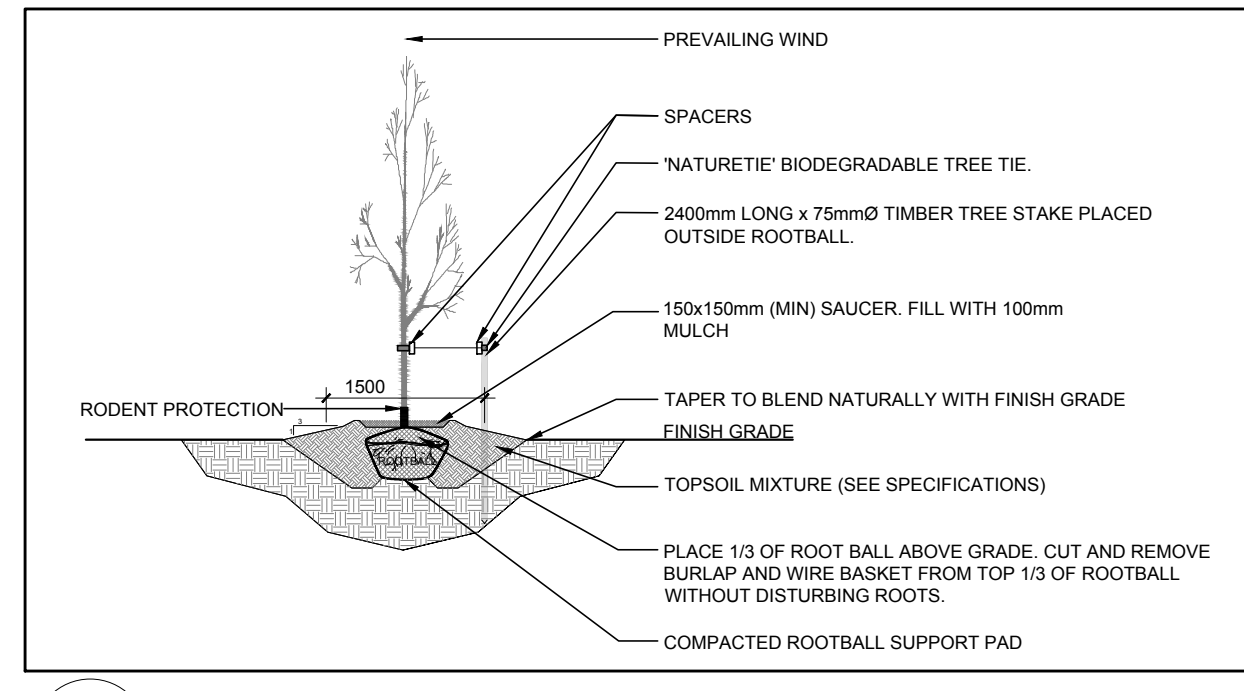
STAMP
ASSOCIATION OF LANDSCAPE ARCHITECTS
JAMES B. LENNOX
MEMBER
SCALE
AS SHOWN
START DATE
SEPTEMBER 2022
PROJECT NO.
22MIS2283

PROJECT NORTH
DRAWING NO.
L.1
PLOT SIZE ARCH-D

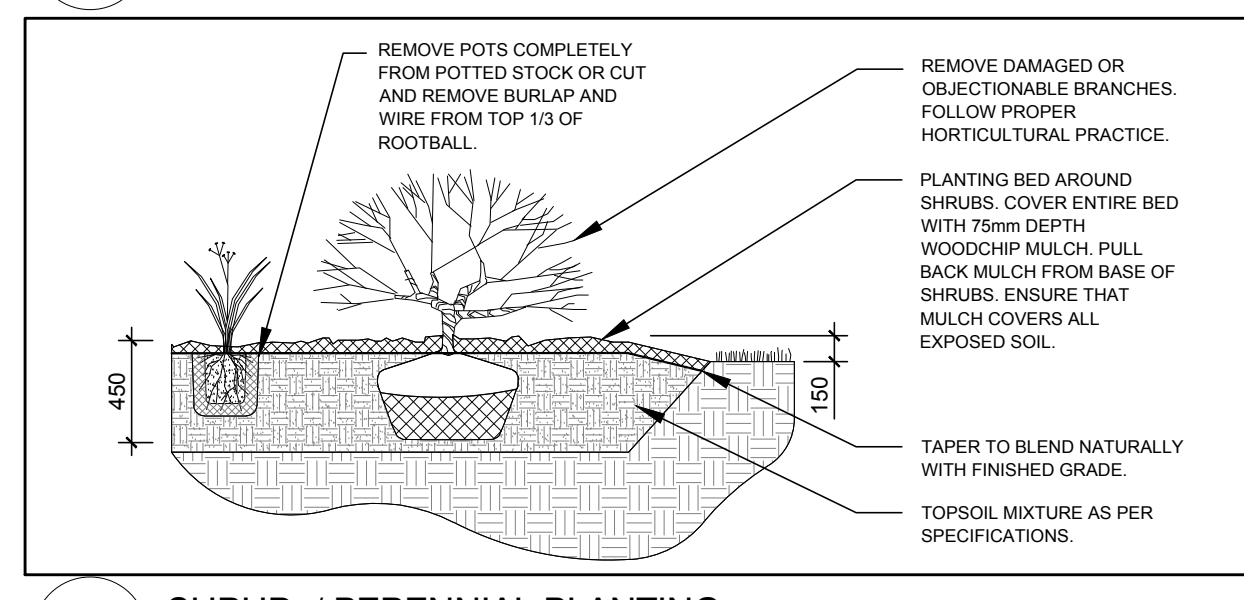


1 TREE CONSERVATION REPORT & LANDSCAPE PLAN
L.1 SCALE 1:100

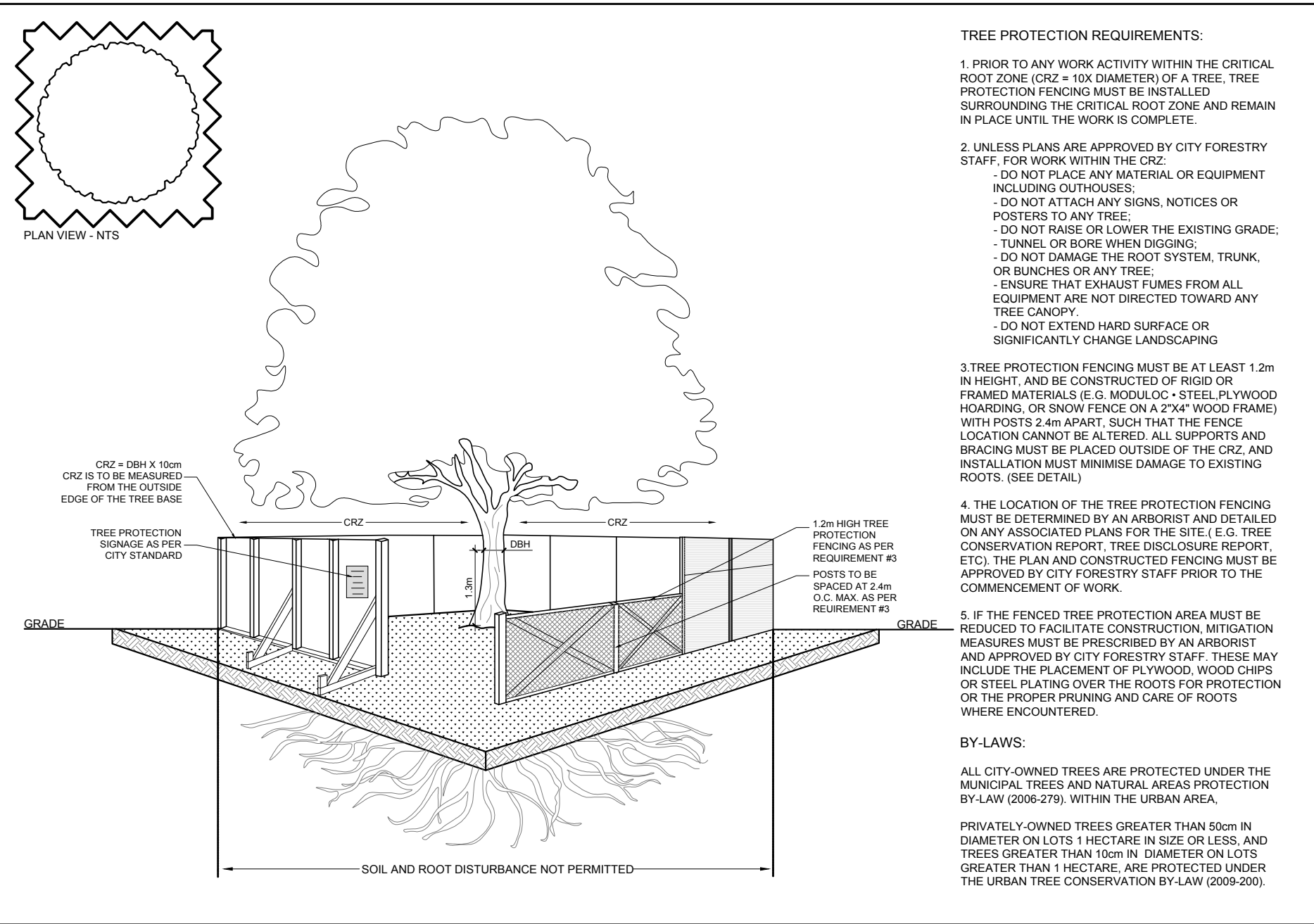
2 AC
1500mm DEPTH



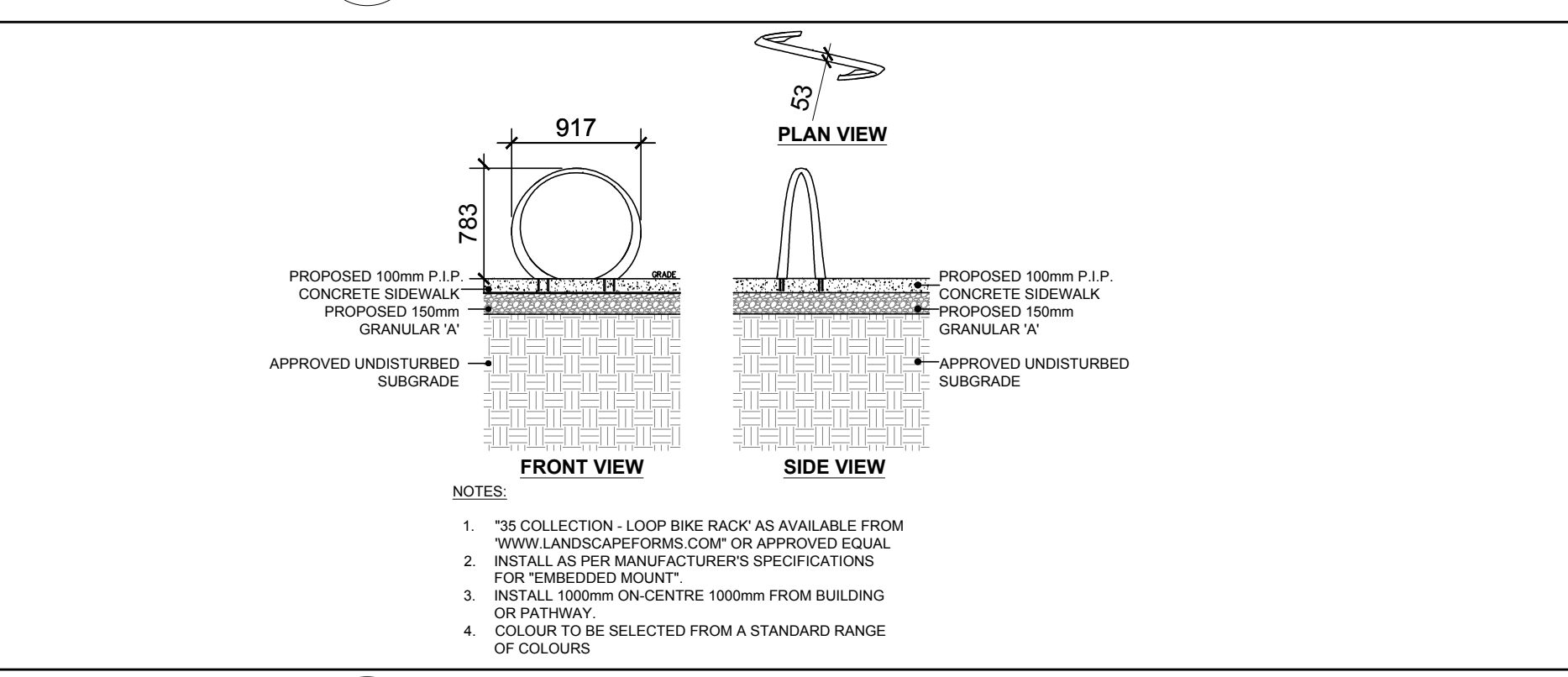
2 DECIDUOUS TREE PLANTING
L.1 SCALE: NTS



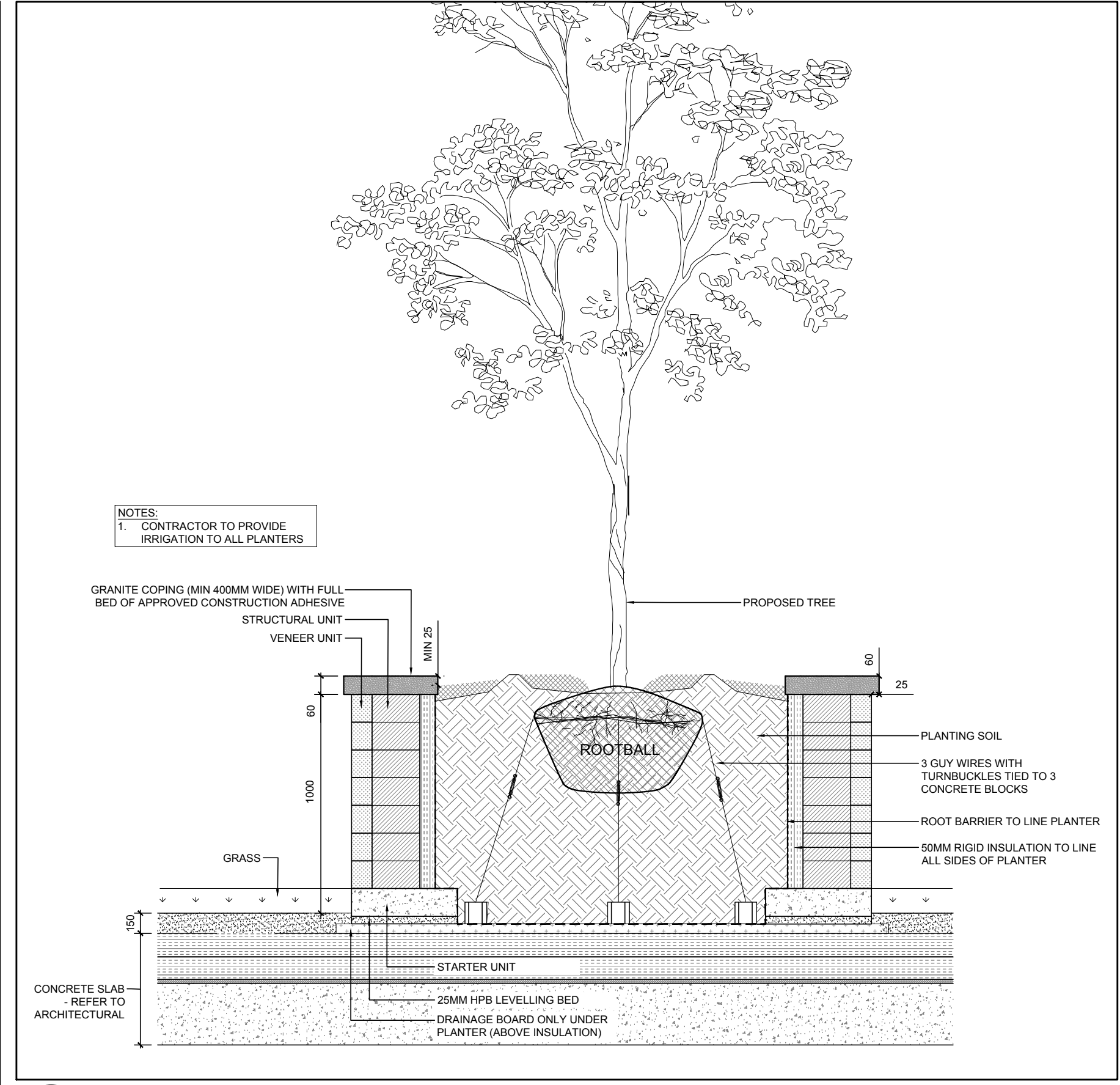
3 SHRUB / PERENNIAL PLANTING
L.1 SCALE: NTS



4 TREE PROTECTION FENCING
L.1 SCALE: NTS



5 LOOP BIKE RACK
L.1 SCALE: NTS



6 PRECAST CONCRETE PLANTER ON CONCRETE SLAB
L.1 SCALE: NTS

- GENERAL NOTES:**
- It is the responsibility of the appropriate contractor or official to report any errors, omissions or discrepancies on this plan with actual site conditions to the Landscape Architect before proceeding with construction.
 - The contractor is to notify all utility companies and authorities prior to any excavation and ascertain locations of underground services.
 - The contractor is to reinstaate all areas and items damaged as a result of construction activity.
 - The contractor is to comply with all pertinent codes and by-laws.
 - The contractor is to maintain a positive surface run-off throughout the entire construction period.
 - The Landscape Architect is not responsible for subsurface conditions.
 - The contractor is to identify all existing trees to remain on site with the Landscape Architect prior to construction.
 - The contractor is to stake the proposed location of all plant material in conjunction with the Landscape Architect prior to excavation.
 - Minimum distances for selected deciduous trees are as follows:
 - Building Foundations 7.5m
 - Sidewalks 1.5m
 - Public Streets 2.5m
 - Underground Infrastructure 2.0m
 - All trees within 1m of underground utility trenches are to be excavated by hand.
 - Remove all protective wrapping from tree trunks after installation.
 - Staking of trees shall only be performed if necessary.
 - Ensure that mulch is pulled back a min. distance of 75mm from base of tree trunk.
 - Plant material is to be under a 2 year warranty.

EXISTING TREE LIST

| KEY | QTY | BOTANICAL NAME | COMMON NAME | SIZE | CONDITION | REMARKS | OWNERSHIP |
|-----|-----|------------------------|----------------|-----------|-----------|---------------|------------|
| AC | 2 | Amelanchier canadensis | Serviceberry | 150mm DBH | Poor | To be removed | 230 Lisgar |
| AN | 1 | Acer negundo | Manitoba Maple | 250mm DBH | Good | To remain | 297 Cooper |

PROPOSED PLANT LIST

| KEY | QTY | BOTANICAL NAME | COMMON NAME | SIZE | CONDITION | REMARKS |
|-----|-----|----------------------------------|-----------------------------|-----------|-----------|------------|
| AM | 1 | Acer x freemanii 'Armstrong' | Armstrong Maple | 60mm ø | B&B | |
| GB | 1 | Ginkgo biloba 'Princeton Sentry' | Princeton Sentry Ginkgo | 60mm ø | B&B | Male tree |
| HA | 1 | Crataegus crus-galli var inermis | Thornless Cockspur Hawthorn | 60mm ø | B&B | |
| SB | 1 | Amelanchier canadensis | Serviceberry | 60mm ø | B&B | |
| SF | 1 | Amelanchier laevis 'JFS-ARB' | Spring Flurry Serviceberry | 60mm ø | B&B | |
| GS | 15 | Spiraea x arguta | Garland Spirea | 800mm ht. | Potted | |
| DL | 20 | Hemerocallis 'Stella D'Oro' | Stella D'Oro Daylily | 100mm pot | Potted | 400mm o.c. |
| MF | 20 | Hemerocallis 'Moses Fire' | Moses Fire Daylily | 100mm pot | Potted | 400mm o.c. |
| RS | 27 | Hemerocallis 'Ruby Stella' | Ruby Stella Daylily | 100mm pot | Potted | 400mm o.c. |

LISGAR STREET

APPROXIMATE CENTERLINE OF ROAD