

CLIENT:
230 LISGAR STREET INC.

CONSULTANTS
ARCHITECTS
project studio
Project Studio Incorporated
(416) 461-9939 | www.projectstudio.ca

CIVIL ENGINEERS
NOVATECH
Engineers, Planners & Landscape Architects
Suite 200, 240 Michael Cowpland Drive
Ottawa, Ontario, Canada K2M 1Y6
Telephone: (613) 254-9643
Facsimile: (613) 254-5867
Website: www.novatech-eng.com

- LEGEND**
- PROPOSED DECIDUOUS TREE
 - PROPOSED SHRUBS / PERENNIALS
 - PROPOSED RIVERSTONE
 - PROPOSED SOD
 - PROPOSED PRECAST CONCRETE PAVERS
 - TREE PROTECTION FENCE
 - PROPOSED LOOP BIKE RACK
 - EXISTING TREE TO REMAIN
 - EXISTING TREE TO BE REMOVED

No.	Issue	Date	MM/DD/YY	DR	CK
4	REVISED PER CITY COMMENTS	11/22/2023		ML	JL
3	REVISED PER CITY COMMENTS	07/25/2023		ML	JL
2	REVISED PER NEW SITE PLAN	05/29/2023		ML	JL
1	ISSUED FOR SITE PLAN CONTROL	11/22/2022		ML	JL

JAMES B. LENNOX & ASSOCIATES INC.
LANDSCAPE ARCHITECTS
3332 CARLING AVE. OTTAWA, ONTARIO K2M 1S8
Tel: (613) 732-6168 Fax: (866) 343-3942

PROJECT
PROPOSED NINE STOREY RESIDENTIAL BUILDING
230-232 LISGAR STREET, OTTAWA ON

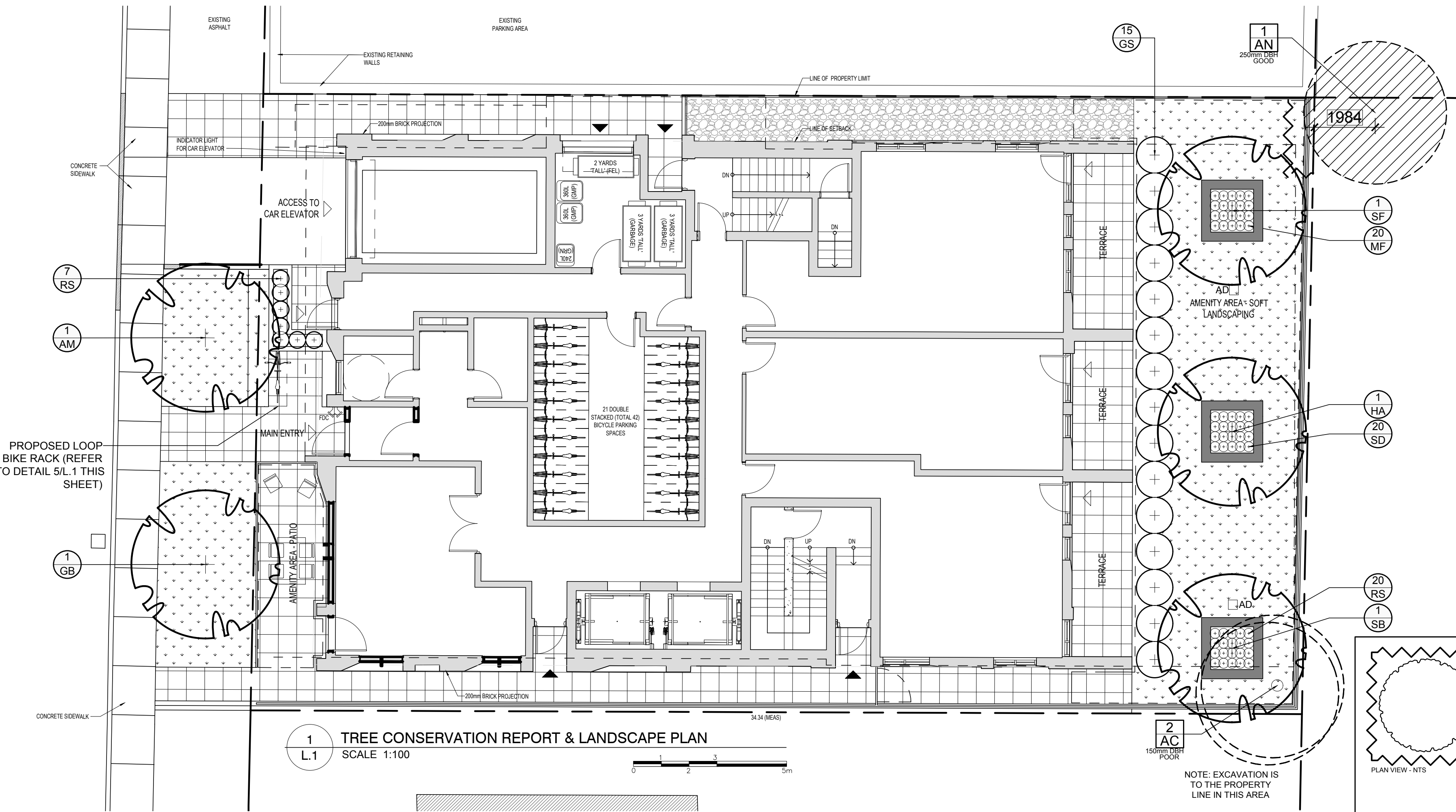
DRAWING
TREE CONSERVATION REPORT & LANDSCAPE PLAN

SCALE
AS SHOWN
START DATE
SEPTEMBER 2022
PROJECT NO.
22MIS2283

PROJECT NORTH
DRAWING NO.
L.1
PLOT SIZE ARCH-D

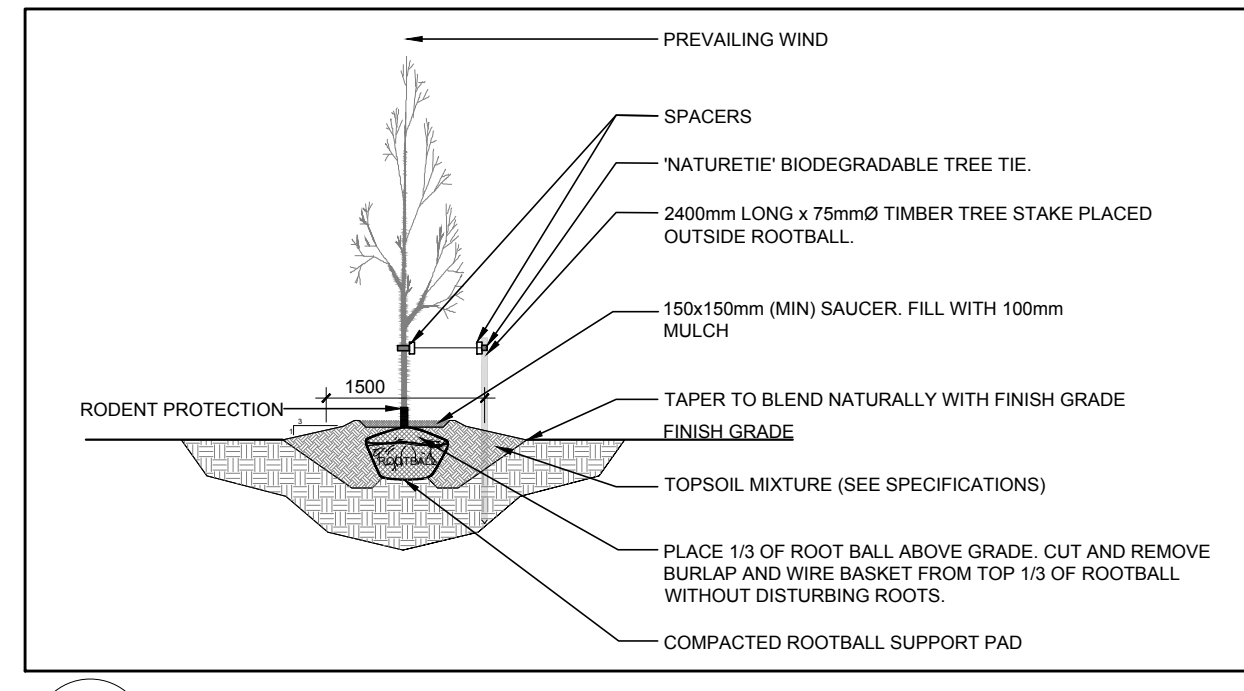
#18902

D07-12-22-0166

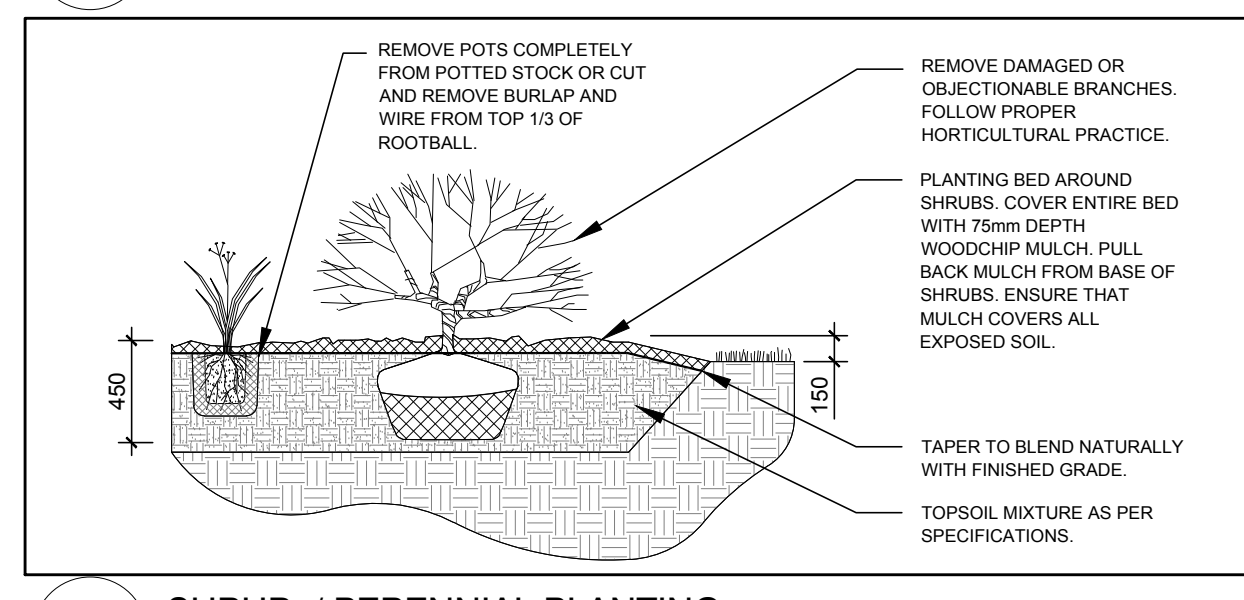


1 TREE CONSERVATION REPORT & LANDSCAPE PLAN
L.1 SCALE: 1:100

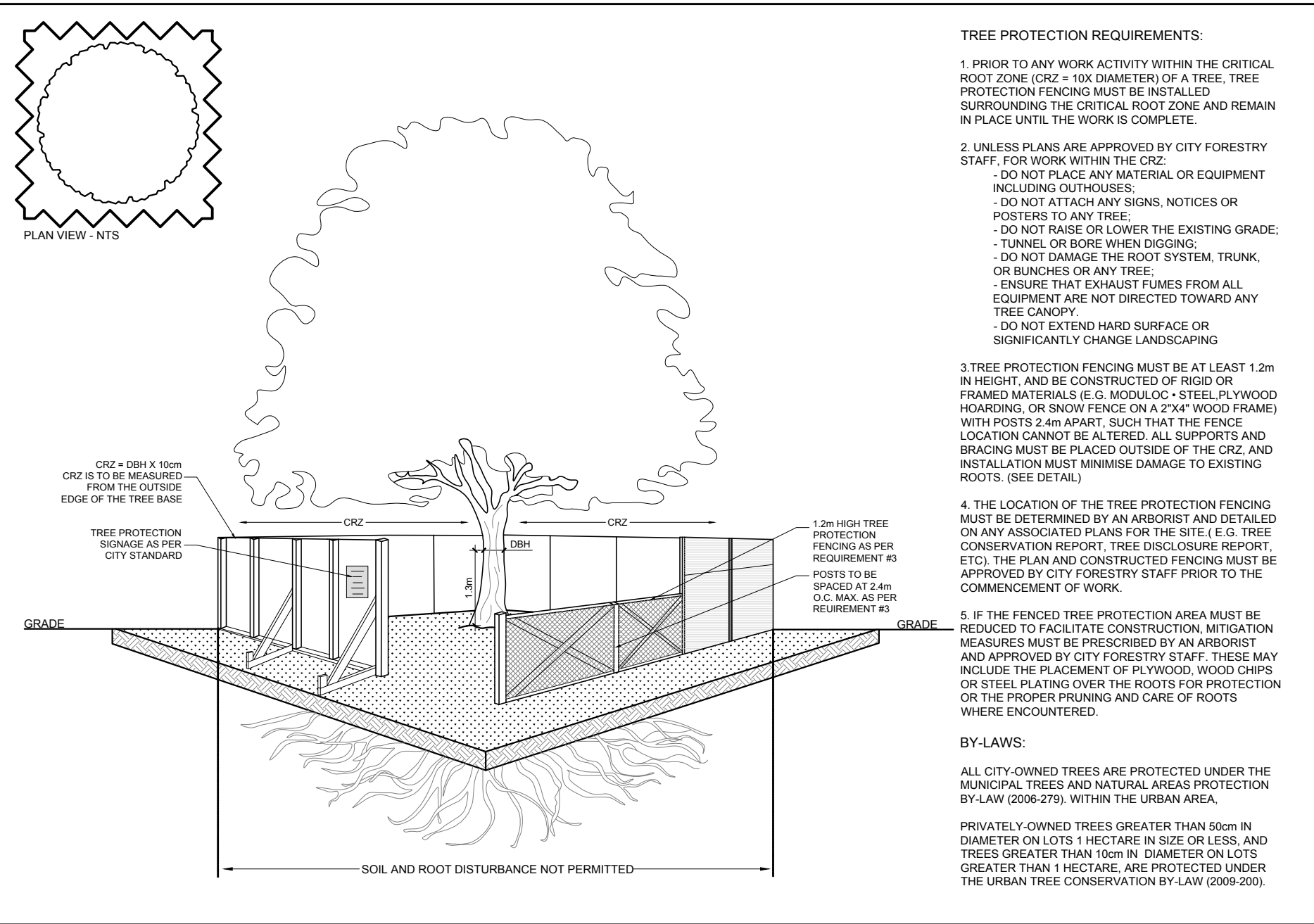
NOTE: EXCAVATION IS TO THE PROPERTY LINE IN THIS AREA



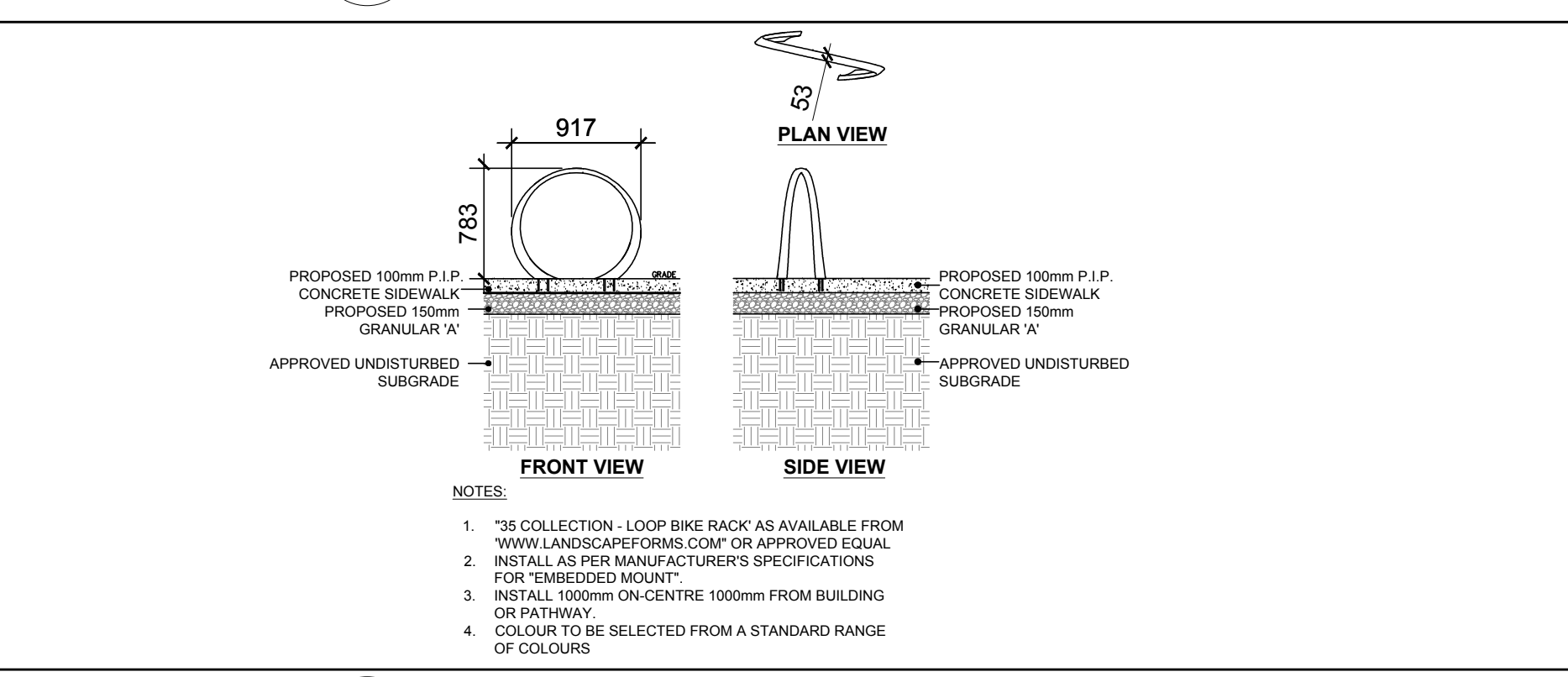
2 DECIDUOUS TREE PLANTING
L.1 SCALE: NTS



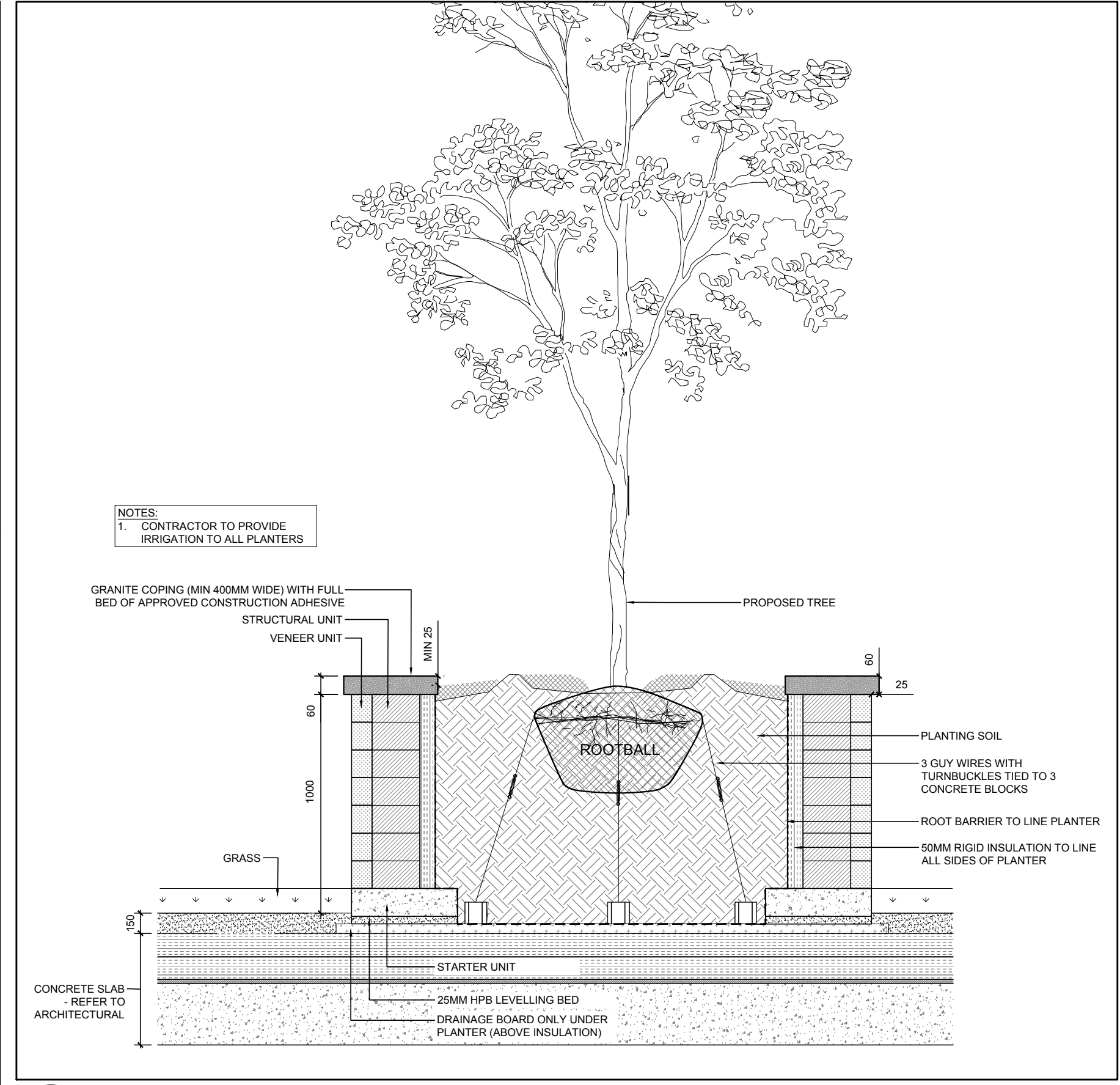
3 SHRUB / PERENNIAL PLANTING
L.1 SCALE: NTS



4 TREE PROTECTION FENCING
L.1 SCALE: NTS



5 LOOP BIKE RACK
L.1 SCALE: NTS



6 PRECAST CONCRETE PLANTER ON CONCRETE SLAB
L.1 SCALE: NTS

- GENERAL NOTES:**
- It is the responsibility of the appropriate contractor or official to report any errors, omissions or discrepancies on this plan with actual site conditions to the Landscape Architect before proceeding with construction.
 - The contractor is to notify all utility companies and authorities prior to any excavation and ascertain locations of underground services.
 - The contractor is to reinstaate all areas and items damaged as a result of construction activity.
 - The contractor is to comply with all pertinent codes and by-laws.
 - The contractor is to maintain a positive surface run-off throughout the entire construction period.
 - The Landscape Architect is not responsible for subsurface conditions.
 - The contractor is to identify all existing trees to remain on site with the Landscape Architect prior to construction.
 - The contractor is to stake the proposed location of all plant material in conjunction with the Landscape Architect prior to excavation.
 - Minimum distances for selected deciduous trees are as follows:
 - Building Foundations 7.5m
 - Sidewalks 1.5m
 - Public Streets 2.5m
 - Underground Infrastructure 2.0m
 - All trees within 1m of underground utility trenches are to be excavated by hand.
 - Remove all protective wrapping from tree trunks after installation.
 - Staking of trees shall only be performed if necessary.
 - Ensure that mulch is pulled back a min. distance of 75mm from base of tree trunk.
 - Plant material is to be under a 2 year warranty.

EXISTING TREE LIST

KEY	QTY	BOTANICAL NAME	COMMON NAME	SIZE	CONDITION	REMARKS	OWNERSHIP
AC	2	Amelanchier canadensis	Serviceberry	150mm DBH	Poor	To be removed	230 Lisgar
AN	1	Acer negundo	Manitoba Maple	250mm DBH	Good	To remain	297 Cooper

PROPOSED PLANT LIST

KEY	QTY	BOTANICAL NAME	COMMON NAME	SIZE	CONDITION	REMARKS
AM	1	Acer x freemanii 'Armstrong'	Armstrong Maple	60mm ø	B&B	
GB	1	Ginkgo biloba 'Princeton Sentry'	Princeton Sentry Ginkgo	60mm ø	B&B	Male tree
HA	1	Crataegus crus-galli var inermis	Thornless Cockspur Hawthorn	60mm ø	B&B	
SB	1	Amelanchier canadensis	Serviceberry	60mm ø	B&B	
SF	1	Amelanchier laevis 'JFS-ARB'	Spring Flurry Serviceberry	60mm ø	B&B	
GS	15	Spiraea x arguta	Garland Spirea	800mm ht.	Potted	
DL	20	Hemerocallis 'Stella D'Oro'	Stella D'Oro Daylily	100mm pot	Potted	400mm o.c.
MF	20	Hemerocallis 'Moses Fire'	Moses Fire Daylily	100mm pot	Potted	400mm o.c.
RS	27	Hemerocallis 'Ruby Stella'	Ruby Stella Daylily	100mm pot	Potted	400mm o.c.