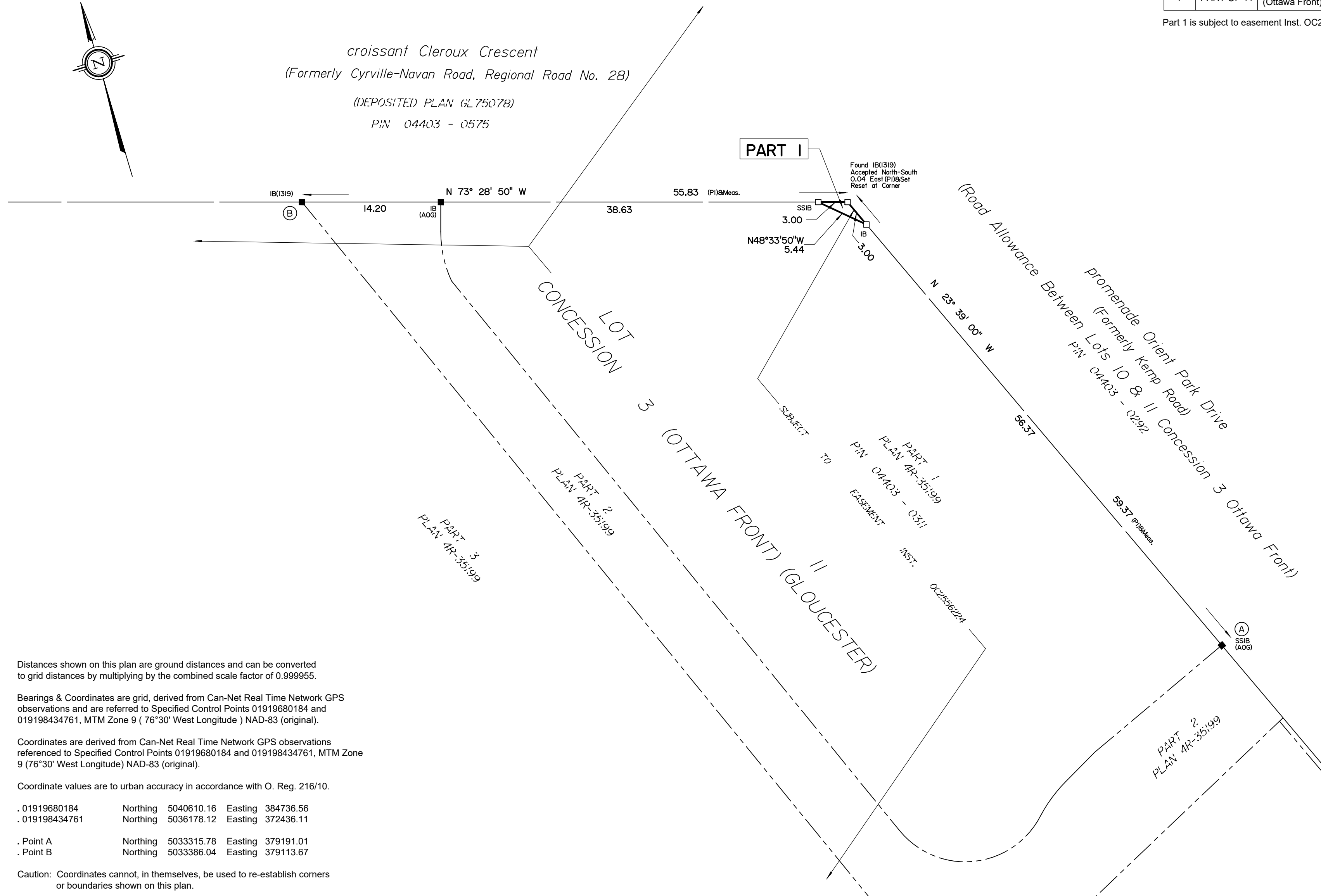


*croissant Cleroux Crescent*  
 (Formerly Cyrville-Navan Road, Regional Road No. 28)  
 (DEPOSITED PLAN GL75078)  
 PIN 04403 - 0575

SCHEDULE			
PART	LOT	CONCESSION	PIN
1	PART OF 11	3 (Ottawa Front)	PART OF 04403-0311

Part 1 is subject to easement Inst. OC2556224



PLAN OF SURVEY OF  
**PART OF LOT 11**  
**CONCESSION 3 (Ottawa Front)**  
**(Geographic Township of Gloucester)**  
**CITY OF OTTAWA**  
 Surveyed by Annis, O'Sullivan, Vollebekk Ltd.

Scale 1 : 300



The intended plot size of this plan is 610 mm in width by 355 mm in height when plotted at a scale of 1:300.

**Metric**

**DISTANCES AND COORDINATES SHOWN ON THIS PLAN ARE IN METRES AND CAN BE CONVERTED TO FEET BY DIVIDING BY 0.3048.**

**Surveyor's Certificate**

I CERTIFY THAT :

1. This survey and plan are correct and in accordance with the Surveys Act, the Surveyors Act, the Land Titles Act and the regulations made under them.
2. The survey was completed on October 25, 2023.

Date \_\_\_\_\_ Tyler J. Allison  
 Ontario Land Surveyor

This plan of survey relates to AOLS Plan Submission form number: V-59872

**Notes & Legend**

- Denotes Survey Monument Planted
- " Survey Monument Found
- SIB " Standard Iron Bar
- SSIB " Short Standard Iron Bar
- IB " Iron Bar
- (WIT) " Witness
- (AOG) " Annis, O'Sullivan, Vollebekk Ltd.
- Meas. " Measured
- (P1) " Plan 4R-35199

Distances shown on this plan are ground distances and can be converted to grid distances by multiplying by the combined scale factor of 0.999955.

Bearings & Coordinates are grid, derived from Can-Net Real Time Network GPS observations and are referred to Specified Control Points 01919680184 and 019198434761, MTM Zone 9 ( 76°30' West Longitude ) NAD-83 (original).

Coordinates are derived from Can-Net Real Time Network GPS observations referenced to Specified Control Points 01919680184 and 019198434761, MTM Zone 9 (76°30' West Longitude) NAD-83 (original).

Coordinate values are to urban accuracy in accordance with O. Reg. 216/10.

. 01919680184 Northing 5040610.16 Easting 384736.56  
 . 019198434761 Northing 5036178.12 Easting 372436.11

. Point A Northing 5033315.78 Easting 379191.01  
 . Point B Northing 5033386.04 Easting 379113.67

Caution: Coordinates cannot, in themselves, be used to re-establish corners or boundaries shown on this plan.

**ANNIS, O'SULLIVAN, VOLLEBEKK LTD.**  
 165 Bay Street  
 Embrun, Ont. K0A 1W1  
 Phone: (613) 443-3364  
 Email: Embrun@aovltd.com

Ontario Land Surveyors Job No. E-3433-23