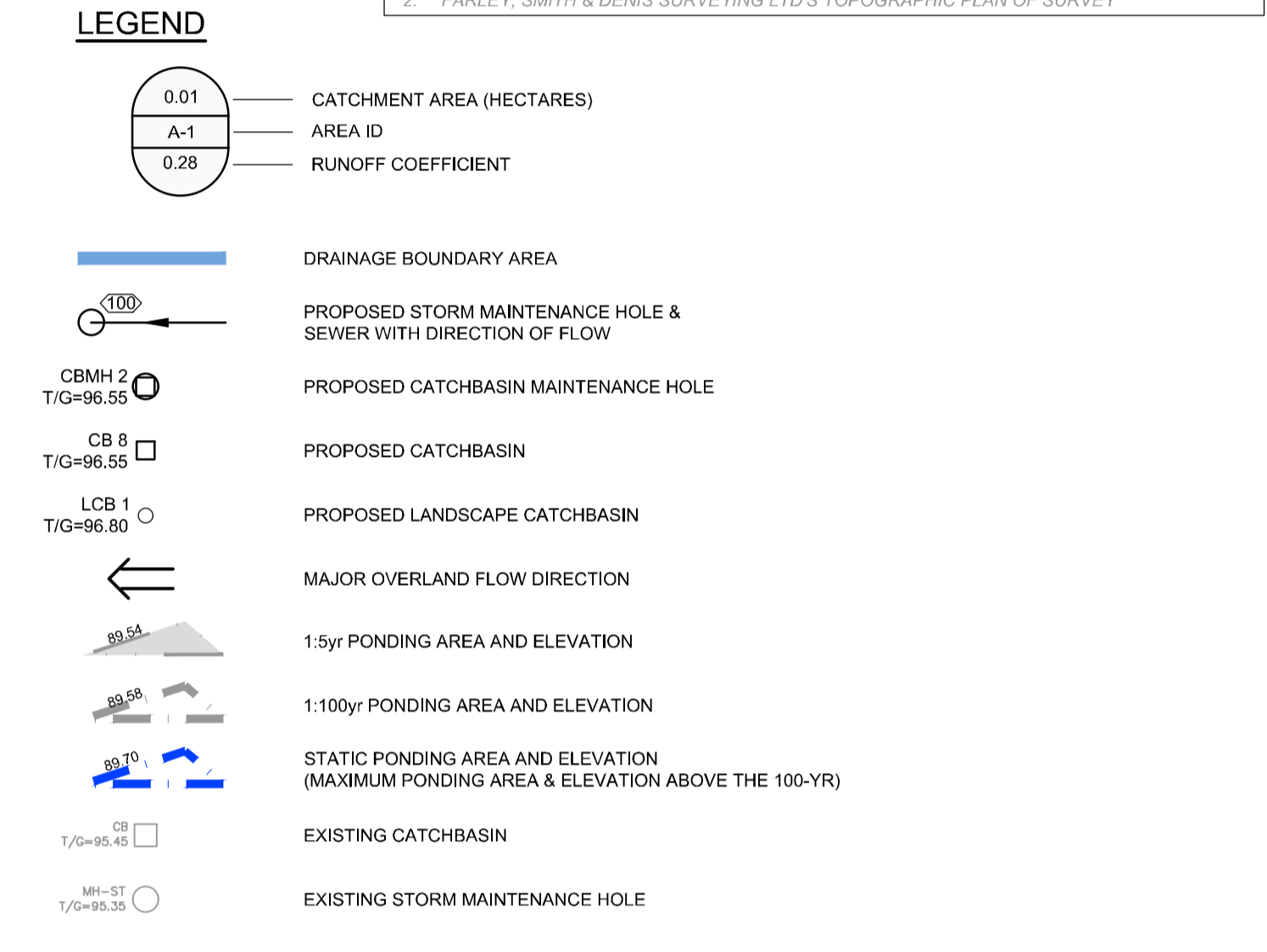
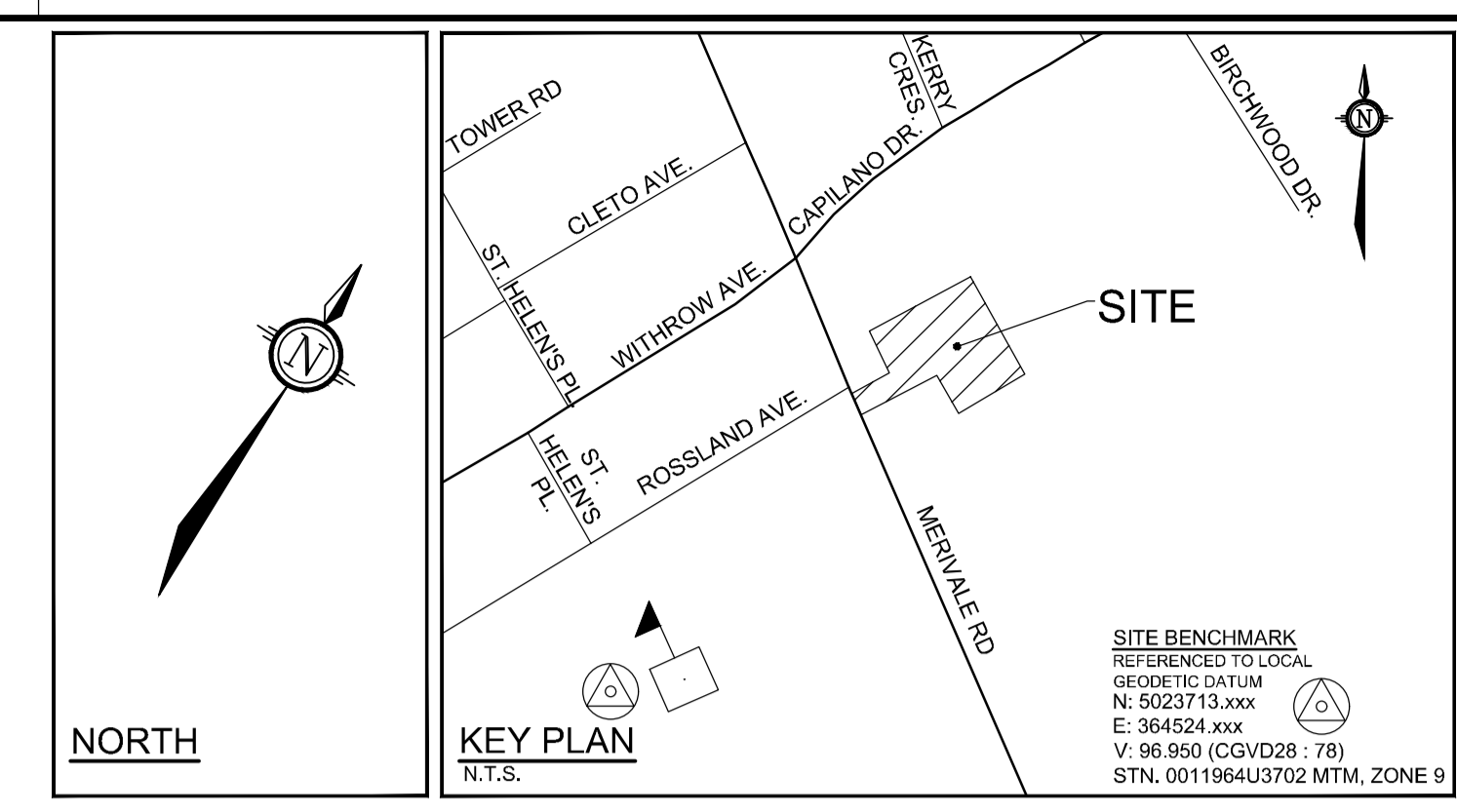


At Hamlin

ALLISON HAMLIN
MANAGER (A), DEVELOPMENT REVIEW WEST
PLANNING, REAL ESTATE & ECONOMIC DEVELOPMENT
DEPARTMENT, CITY OF OTTAWA

APPROVED
By Allison Hamlin at 4:15 pm, Sep 15, 2023



PROPOSED ROOF DRAIN TABLE: AREA B-1 (ROOF DRAINS 1 to 7)

AREA ID	ROOF DRAIN No. (WATTS MODEL)	ROOF DRAIN OPENING SETTING	1.5 YEAR RELEASE RATE	APPROX. 5-YR PONDING DEPTH	1:100 YEAR RELEASE RATE	APPROX. 100-YR PONDING DEPTH
B-1	RD 1 (RD-100-A-ADJ)	FULLY OPEN	1.26 L/s	12 cm	1.89 L/s	15 cm
B-1	RD 2 (RD-100-A-ADJ)	FULLY OPEN	1.26 L/s	12 cm	1.89 L/s	15 cm
B-1	RD 3 (RD-100-A-ADJ)	FULLY OPEN	1.26 L/s	12 cm	1.89 L/s	15 cm
B-1	RD 4 (RD-100-A-ADJ)	FULLY OPEN	1.26 L/s	13 cm	1.89 L/s	15 cm
B-1	RD 5 (RD-100-A-ADJ)	FULLY OPEN	1.26 L/s	12 cm	1.89 L/s	15 cm
B-1	RD 6 (RD-100-A-ADJ)	FULLY OPEN	1.26 L/s	10 cm	1.89 L/s	13 cm
B-1	RD 7 (RD-100-A-ADJ)	FULLY OPEN	1.26 L/s	10 cm	1.89 L/s	13 cm

* REFER TO THE "SERVICING DESIGN BRIEF" (R-2022-207) PREPARED BY NOVATECH FOR STORMWATER MANAGEMENT DETAILS.
** ALL CONTROLLED FLOW ROOF DRAINS FOR THE PROPOSED BUILDING TO BE WATTS' ADJUSTABLE ACCUTROL' ROOF DRAINS.

INLET CONTROL DEVICE DATA TABLE - CBMH05

DESIGN EVENT	ICD TYPE	DIAMETER OF OUTLET PIPE (mm)	DESIGN FLOW (L/s)	DESIGN HEAD (m)	WATER ELEVATION (m)	VOLUME (m ³)	AVAILABLE STORAGE
1.2 YR	IPEX TEMPEST VORTEX LMF 78	250mmØ PVC	6.95	1.73	96.39	11.88	
1.5 YR			7.24	1.88	96.54	19.09	74.62 m ³
1:100 YR			7.41	1.96	96.62	54.20	

INLET CONTROL DEVICE DATA TABLE - CBMH07

DESIGN EVENT	ICD TYPE	DIAMETER OF OUTLET PIPE (mm)	DESIGN FLOW (L/s)	DESIGN HEAD (m)	WATER ELEVATION (m)	VOLUME (m ³)	AVAILABLE STORAGE
1.2 YR	SLIDE-IN-PLATE ICD c/w 83mmØ ORIFICE @ OUTLET PIPE INVERT	250mmØ PVC	16.57	1.37	96.00	5.04	
1.5 YR			19.41	1.85	96.48	7.20	81.79 m ³
1:100 YR			19.79	1.92	96.55	21.03	

INLET CONTROL DEVICE DATA TABLE - CB08

DESIGN EVENT	ICD TYPE	DIAMETER OF OUTLET PIPE (mm)	DESIGN FLOW (L/s)	DESIGN HEAD (m)	WATER ELEVATION (m)	VOLUME (m ³)	AVAILABLE STORAGE
1.2 YR	IPEX TEMPEST VORTEX LMF 94	200mmØ PVC	7.85	1.05	96.55	0.38	
1.5 YR			7.92	1.07	96.57	0.38	9.93 m ³
1:100 YR			8.17	1.14	96.64	2.15	

INLET CONTROL DEVICE DATA TABLE - CB09

DESIGN EVENT	ICD TYPE	DIAMETER OF OUTLET PIPE (mm)	DESIGN FLOW (L/s)	DESIGN HEAD (m)	WATER ELEVATION (m)	VOLUME (m ³)	AVAILABLE STORAGE
1.2 YR	IPEX TEMPEST VORTEX LMF 86	200mmØ PVC	6.61	1.05	96.55	0.38	
1.5 YR			6.66	1.07	96.57	0.38	3.04 m ³
1:100 YR			6.83	1.12	96.62	0.68	

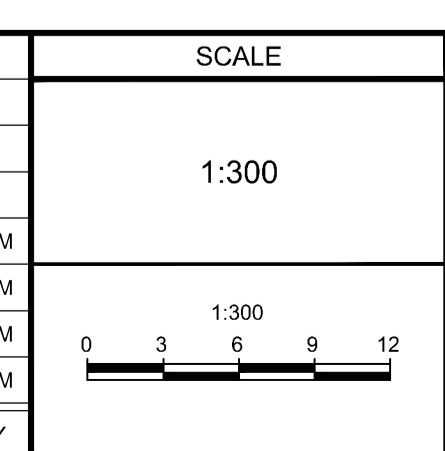
NOTE: AVAILABLE STORAGE FOR EACH CONTROLLED INLET INCLUDES ALL STRUCTURE AND PIPE STORAGE UPSTREAM OF THE INLET CONTROL DEVICE IN ADDITION TO ALL AVAILABLE STATIC PONDING ON THE SURFACE UNLESS OTHERWISE NOTED.



NOTE: THE POSITION OF ALL POLE LINES, CONDUITS, WATERMANS, SEWERS AND OTHER UNDERGROUND AND OVERGROUND UTILITIES AND STRUCTURES IS NOT NECESSARILY SHOWN ON THE CONTRACT DRAWINGS, AND WHERE SHOWN, THE ACCURACY OF THE POSITION OF SUCH UTILITIES AND STRUCTURES IS NOT GUARANTEED. BEFORE STARTING WORK, DETERMINE THE EXACT LOCATION OF ALL SUCH UTILITIES AND STRUCTURES AND ASSUME ALL LIABILITY FOR DAMAGE TO THEM.



No.	REVISION	DATE	BY
4.	RE-ISSUED FOR SITE PLAN APPROVAL	AUG 14/23	TJM
3.	REVISED CITY PROJECT NUMBER	JUL 14/23	TJM
2.	ISSUED FOR SITE PLAN APPROVAL - REVISED	MAY 12/23	TJM
1.	ISSUED FOR SITE PLAN APPROVAL	DEC 23/22	TJM



DESIGN: SAB
CHECKED: TJM
DRAWN: SAB
CHECKED: TJM
APPROVED: MER

LICENSED PROFESSIONAL ENGINEER
T. J. MCKAY
100195434
AUGUST 14, 2023
PROVINCE OF ONTARIO

NOVATECH
Engineers, Planners & Landscape Architects
Suite 200, 240 Michael Cowpland Drive
Ottawa, Ontario, Canada K2M 1P6
Telephone: (613) 254-9643
Facsimile: (613) 254-5867
Website: www.novatech-eng.com

LOCATION: CITY OF OTTAWA, 1545A MERIVALE ROAD

DRAWING NAME: STORM DRAINAGE AREA PLAN

PROJECT No.: 122098

REV # 4

DRAWING No.: 122098-STM

PLEASE PRINT OR TYPE

M:\2023\122098\CAD\Civil\122098-STM.dwg, STM, Jul 13, 2023, 12:31pm, shennett

D07-12-22-0190 #18911