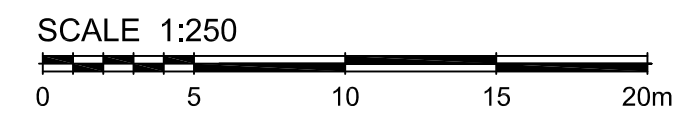


- ### LEGEND / SYMBOL
- PROPOSED TREE (PER SUBDIVISION) \*TO BE ADJUSTED TO ULTIMATE/ FINAL ROAD ALIGNMENT
  - PROPOSED DECIDUOUS TREE DETAIL 1/L2.01
  - PROPOSED CONIFEROUS TREE DETAIL 1/L2.01
  - PROPOSED SHRUBS / PERENNIALS / GRASSES DETAIL 1/L2.01
  - ① PROPOSED BICYCLE PARKING SPACES PROVIDED: 16  
PROPOSED BICYCLE RACK PROPOSED QTY: 8 DETAIL 2/L2.02
  - ② PROPOSED 1.8m HT. DECORATIVE METAL FENCE DETAIL 3/L2.01
  - ③ PROPOSED 1.8m HT. DECORATIVE METAL (FENCE) GATE DETAIL 4/L2.01
  - ④ PROPOSED WOOD SCREEN DETAIL 1/L2.02
  - ⑤ PROPOSED RIVERSTONE DETAIL 6/L2.01
- ### TREE CANOPY COVER DATA (ASSUMED AT 40 YR. MATURITY)
- LARGE DECIDUOUS TREES: 10m Dia. Spread  
78m<sup>2</sup> per x 56 = 4368m<sup>2</sup>
  - SMALL DECIDUOUS TREES: 5m Dia. Spread  
20m<sup>2</sup> per x 18 = 360m<sup>2</sup>
  - CONIFEROUS TREES: 4.5m Dia. Spread  
16m<sup>2</sup> per x 29 = 464m<sup>2</sup>
- TOTAL TREE CANOPY COVER: 5192m<sup>2</sup>  
TOTAL SITE AREA minus BLDG. FOOTPRINT: 12808m<sup>2</sup>  
% TREE CANOPY COVER: 40.5

LADY PELLATT STREET

NOELLA LECLAIR WAY EXTENSION



**APPROVED**  
By Adam Brown at 1:00 pm, Aug 10, 2023

**ADAM BROWN**  
MANAGER, DEVELOPMENT REVIEW - RURAL  
PLANNING, REAL ESTATE & ECONOMIC DEVELOPMENT  
DEPARTMENT, CITY OF OTTAWA

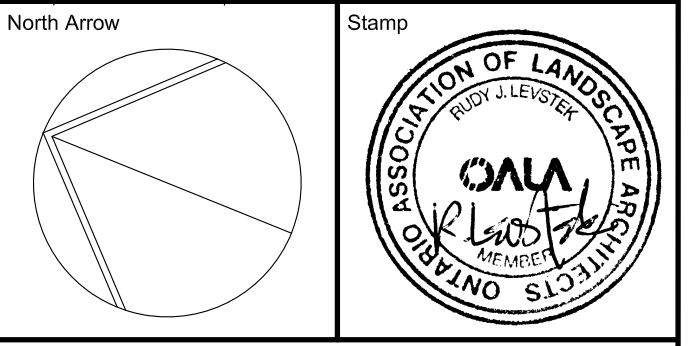
- ### GENERAL NOTES
- 1 This drawing shall be read in conjunction with all relevant Architectural, Engineering and related Drawings and Documents.
  - 2 Refer to Engineering Drawings for Grading and Servicing.
  - 3 Refer to Architectural Drawings for Site layout.
  - 4 Contractor shall provide the location(s) of all services/utilities by consulting Municipal Authorities and Utility companies and shall be responsible for adequate protection from damage during construction.
  - 5 Plant material shall be No. 1 Grade and shall comply with the Metric Guide Specifications For Nursery Stock (latest edition), published by the Canadian Nursery Trades Association.
  - 6 Plant Material locations are **Schematic / Approximate only**. Contractor shall stake out locations on site prior to work. Contractor shall guarantee all plant material for a period of one (1) full year from the date of final acceptance.
  - 7 **Shrubs** shall be planted in a continuous prepared bed of 450mm depth planting soil mix covered over with a woven polypropylene weed control fabric (**LANDSCAPE FABRIC-Green-Line by Thrace-LINQ**) and 75mm depth composted pine mulch to finish grade, as specified
  - 8 **Perennials and Ornamental Grasses** shall be planted in a continuous prepared bed of 450mm depth planting soil mix covered over with 75mm depth composted pine mulch to finish grade. (**NO WEED CONTROL FABRIC**), as specified. Sod areas to receive 125mm topsoil. Sod shall be No. 1 quality conforming to the Canadian Nursery Sod Growers Specification. Reinstall all areas damaged or disturbed beyond the limit of Work. Plant Material substitutions shall not be permitted without written approval from the Consultant.
  - 9 Contractor shall advise Consultant a minimum of **48hrs.** prior to proceeding landscape work and any required Field Reviews.
  - 10 **TREE PLANTING SETBACK RESTRICTIONS FOR BUILDING FOUNDATIONS CONFORM TO RECOMMENDATIONS AND STANDARDS SET OUT IN THE GEOTECHNICAL REPORT THIS PLAN HAS BEEN PREPARED FOR MUNICIPAL SITE PLAN APPROVAL ONLY AND MAY NOT BE USED FOR ANY OTHER PURPOSE.**
  - 11
  - 12
  - 13
  - 14
  - 15

### PLANT MATERIAL SCHEDULE

CODE	BOTANICAL NAME	COMMON NAME	QTY.	SIZE	REMARKS
<b>DECIDUOUS TREES</b>					
AC	AMELANCHIER CANADENSIS	SHADBLow SERVICEBERRY	4	50mm cal	B&B, Single Stem
AFJ	ACER x FREEMANI JEFFERSRED	AUTUMN BLAZE MAPLE	9	50mm cal	B&B, Single Stem
AS	ACER SACCHARUM	SUGAR MAPLE	2	50mm cal	B&B, Single Stem
CO	CELTIS OCCIDENTALIS	COMMON HACKBERRY	10	50mm cal	B&B, Single Stem
GBA	GINKGO BILOBA 'AUTUMN GOLD'	AUTUMN GOLD MAIDENHAIR TREE	9	50mm cal	B&B, Single Stem
GT	GLEDITSIA TRIACANTHOS SKYLINE	SKYLINE HONEYLOCUST	2	50mm cal	B&B, Single Stem
QM	QUERCUS MACROCARPA	BUR OAK	6	50mm cal	B&B, Single Stem
QR	QUERCUS RUBRA	RED OAK	6	50mm cal	B&B, Single Stem
SR	SYRINGA RETICULATA 'IVORY SILK'	IVORY SILK JAPANESE TREE LILAC	3	50mm cal	B&B, Single Stem
TA	TILIA AMERICANA	AMERICAN BASSWOOD	2	50mm cal	B&B, Single Stem
<b>CONIFEROUS TREES</b>					
PG	PICEA GLAUCA	WHITE SPRUCE	7	200 cm ht	B&B
PN	PINUS NIGRA	AUSTRIAN PINE	6	200 cm ht	B&B
PP	PICEA PUNGENS	COLORADO GREEN SPRUCE	9	200 cm ht	B&B
PBR	PINUS STROBUS	WHITE PINE	5	200 cm ht	B&B
TO	THUJA OCCIDENTALIS	EASTERN WHITE CEDAR	20	150cm ht	B&B, 100cm o/c
<b>DECIDUOUS SHRUBS</b>					
HAA	HYDRANGEA ARBORESCENS	ANNABELLE HYDRANGEA	56	50cm ht	potted, 100cm o/c
PFG	POTENTILLA FRUTICOSA	GOLDFINGER CINQUEFOIL	21	50cm ht	potted, 100cm o/c
PHV	PHILADELPHUS X VIRGINALIS	MOCKORANGE	100	50cm ht	potted, 100cm o/c
PO	PHYSCARPUS OPULIFOLIUS	COMMON NINEBARK	56	50cm ht	potted, 100cm o/c
PON	PHYSCARPUS OPULIFOLIUS	DWARF NINEBARK	40	50cm ht	potted, 100cm o/c
NANUS					
RB	ROSA BLANDA	SHRUB ROSE	120	50cm ht	potted, 100cm o/c
SJAW	SPIRAEA JAPONICA ANTHONY WATERER	ANTHONY WATERER SPIREA	20	50cm ht	potted, 100cm o/c
SJF	SPIRAEA JAPONICA 'FROEBELII'	FROEBEL SPIREA	115	50cm ht	potted, 100cm o/c
WF	WEIGELA FLORIDA 'POLKA'	POLKA WEIGELA	47	50cm ht	potted, 100cm o/c
<b>PERENNIALS</b>					
Ger	GERANIUM maculatum	WILD GERANIUM	50	15 cm pot	plant 60cm o/c
Hel	HELOPSIS helianthoides 'Tuscan Sun'	TUSCAN SUNFLOWER	55	15 cm pot	plant 60cm o/c
Sai	SALVIA x sylvestris 'May Night'	MAY NIGHT SAGE	25	15 cm pot	plant 60cm o/c
<b>ORNAMENTAL GRASSES</b>					
Cal	CALAMAGROSTIS x acutiflora 'Karl Foerster'	KARL FOERSTER REED GRASS	42	15cm pot	plant 75cm o/c
Pv	PANICUM virgatum	SWITCH GRASS	30	15cm pot	plant 75cm o/c
Scr	SORGHASTRUM nutans	INDIAN GRASS	10	15cm pot	plant 75cm o/c
Spo	SPOROBOOLUS heterolepis	PRAIRES DROPSEED	20	15cm pot	plant 75cm o/c

FOR APPROVAL ONLY

no.	date	revision
3.	JUNE 2/23	RE-ISSUE FOR SPA (2)
2.	MAY 12/23	ISSUE FOR MLTC WORKING DRAWINGS
1.	FEB. 17/23	ISSUE FOR SPA



Contractor shall check and verify all dimensions on site and report all errors and/or omissions to the Consultant.  
Work to be done in accordance with all applicable codes and by-laws.  
Do not scale Drawing.  
This Drawing shall not be used for construction until signed by the Consultant.  
Copyright reserved. This Drawing is the exclusive property of Levstek Consultants Inc. and shall not be used without consent.

Consultant:  
**LEVSTEK CONSULTANTS**  
LANDSCAPE ARCHITECTS  
5871 Hugh Crescent - Ottawa - Ontario - K9A 2W6  
613 - 826 - 8516

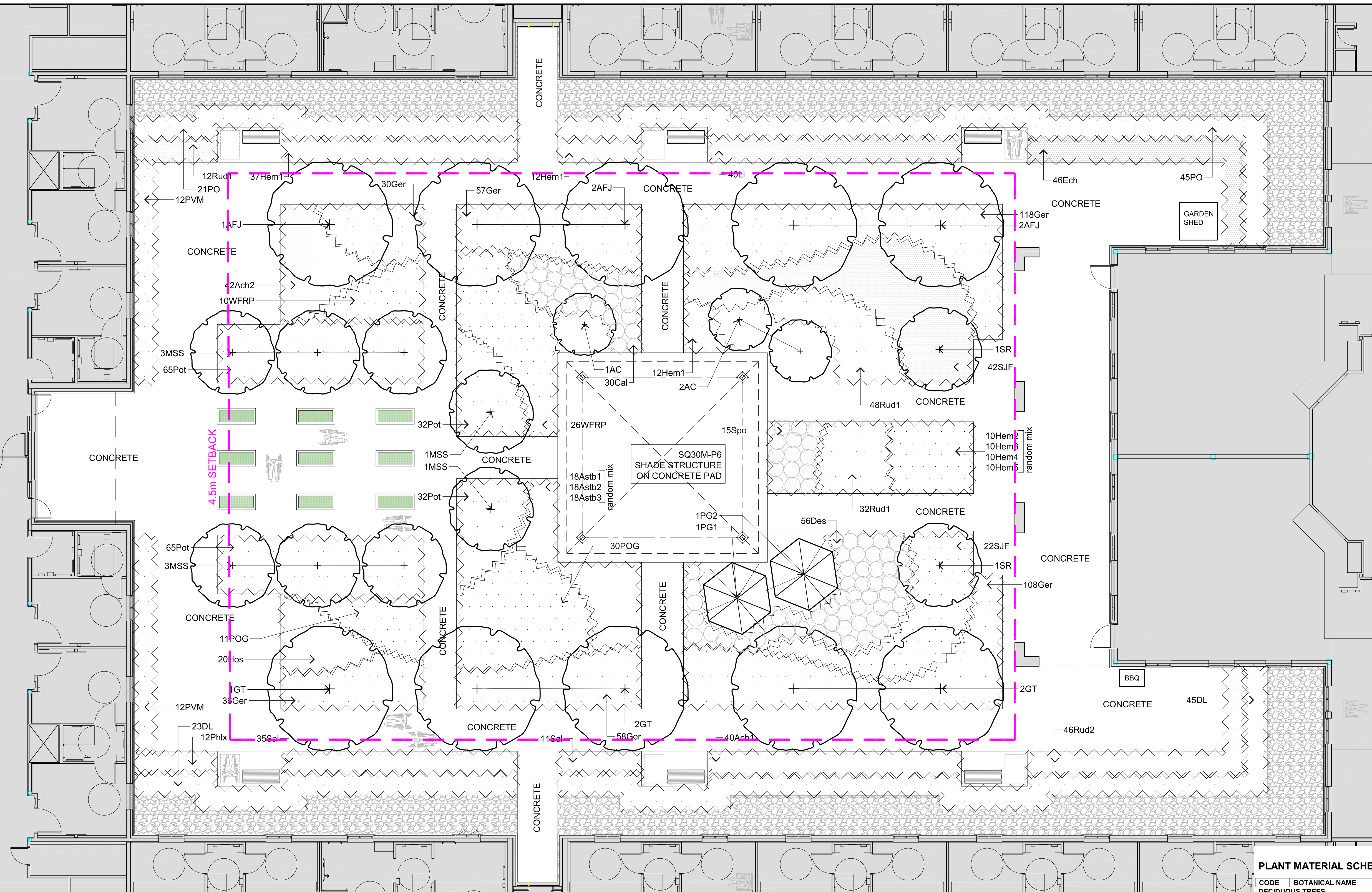
Client:  
Project:  
**ORLEANS EXTENDICARE**  
1045 NOELLA LECLAIR

Drawing Title:  
**LANDSCAPE PLAN**

Drawn	Date	Drawing No.
MBG	JAN 2023	L1.01
Scale	Project No.	
1:250	1217	

D07-12-23-0025





LEGEND / SYMBOL

- PROPOSED DECIDUOUS TREE  
DETAIL 1/L2.01
- PROPOSED DECIDUOUS SPECIMEN SHRUB  
DETAIL 1/L2.01
- PROPOSED CONIFEROUS TREE  
DETAIL 1/L2.01
- PROPOSED SHRUBS / PERENNIALS / GRASSES  
DETAIL 1/L2.01
- PROPOSED RIVERSTONE  
DETAIL 6/L2.01
- PROPOSED MOVABLE RAISED GARDEN PLANTER  
(TO BE SUPPLIED BY OWNER)
- PROPOSED BENCH  
DETAIL 3/L2.02

**APPROVED**  
By Adam Brown at 1:01 pm, Aug 10, 2023

**ADAM BROWN**  
MANAGER, DEVELOPMENT REVIEW - RURAL  
PLANNING, REAL ESTATE & ECONOMIC DEVELOPMENT  
DEPARTMENT, CITY OF OTTAWA

GENERAL NOTES

- 1 This drawing shall be read in conjunction with all relevant Architectural, Engineering and related Drawings and Documents.
- 2 Refer to Engineering Drawings for Grading and Servicing.
- 3 Refer to Architectural Drawings for Site layout.
- 4 Contractor shall provide the location(s) of all services/utilities by consulting Municipal Authorities and Utility companies and shall be responsible for adequate protection from damage during construction.
- 5 Plant material shall be No. 1 Grade and shall comply with the Metric Guide Specifications For Nursery Stock (latest edition), published by the Canadian Nursery Trades Association.
- 6 Plant Material locations are Schematic / Approximate only. Contractor shall stake out locations on site prior to work.
- 7 Contractor shall guarantee all plant material for a period of one (1) full year from the date of final acceptance.
- 8 Shrubs shall be planted in a continuous prepared bed of 450mm depth planting soil mix covered over with a woven polypropylene weed control fabric (LANDSCAPE FABRIC-Green-Line by Thrace-LINQ) and 75mm depth composted pine mulch to finish grade, as specified.
- 9 Perennials and Ornamental Grasses shall be planted in a continuous prepared bed of 450mm depth planting soil mix covered over with 75mm depth composted pine mulch to finish grade (NO WEED CONTROL FABRIC), as specified.
- 10 Sod areas to receive 125mm topsoil. Sod shall be No. 1 quality conforming to the Canadian Nursery Sod Growers Specification.
- 11 Reinstale all areas damaged or disturbed beyond the limit of Work. Plant Material substitutions shall not be permitted without written approval from the Consultant.
- 12 Contractor shall advise Consultant a minimum of 48hrs. prior to proceeding landscape work and any required Field Reviews.
- 13 TREE PLANTING SETBACK RESTRICTIONS FOR BUILDING FOUNDATIONS CONFORM TO RECOMMENDATIONS AND STANDARDS SET OUT IN THE GEOTECHNICAL REPORT.
- 14 THIS PLAN HAS BEEN PREPARED FOR MUNICIPAL SITE PLAN APPROVAL ONLY AND MAY NOT BE USED FOR ANY OTHER PURPOSE.

FOR APPROVAL ONLY

no.	date	revision
3.	JUNE 2/23	RE-ISSUE FOR SPA (2)
2.	MAY 12/23	ISSUE FOR MLTC WORKING DRAWINGS
1.	FEB. 17/23	ISSUE FOR SPA

Contractor shall check and verify all dimensions on site and report all errors and/or omissions to the Consultant.  
Work to be done in accordance with all applicable codes and by-laws.  
Do not scale Drawing.  
This Drawing shall not be used for construction until signed by the Consultant.  
Copyright reserved. This Drawing is the exclusive property of Levstek Consultants Inc. and shall not be used without consent.

Consultant  
**LEVSTEK CONSULTANTS**  
LANDSCAPE ARCHITECTS  
5871 Hugh Crescent - Ottawa - Ontario - K2A 2W6  
613 - 824 - 8318

Client  
**ORLEANS EXTENDICARE**  
1045 NOELLA LECLAIR

Project  
**ORLEANS EXTENDICARE**  
ORLEANS, ONTARIO

Drawing Title  
**COURTYARD**  
**LANDSCAPE PLAN**

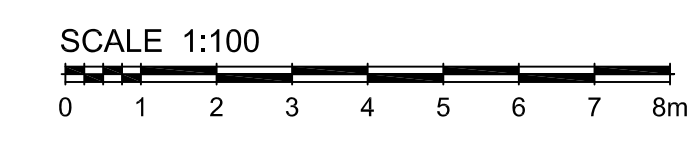
Drawn	Date	Project No.	Drawing No.
MGB	JAN 2023	1217	L1.02

PLANT MATERIAL SCHEDULE (COURTYARD PLANTING)

CODE	BOTANICAL NAME	COMMON NAME	QTY.	SIZE	REMARKS
<b>DECIDUOUS TREES</b>					
AFJ	ACER x FREEMANII JEFFERSRED	AUTUMN BLAZE MAPLE	5	50mm cal	B&B, Single Stem
GT	GLEDITSIA TRIACANTHOS	SUNBURST HONEYLOCUST	5	50mm cal	B&B, Single Stem
MSS	MALUS SPRING SNOW	SPRING SNOW CRABAPPLE	8	50mm cal	B&B, Single Stem
SR	SYRINGA RETICULATA 'IVORY SILK'	IVORY SILK JAPANESE TREE LILAC	2	50mm cal	B&B, Single Stem
<b>CONIFEROUS TREES</b>					
PG1	PICEA GLAUCA	WHITE SPRUCE	1	200 cm ht	B&B
PG2	PICEA GLAUCA	WHITE SPRUCE	1	150cm ht	B&B
<b>DECIDUOUS SHRUBS</b>					
AC	AMELANCHIER CANADENSIS	DOWNY SERVICEBERRY	3	150cm ht	B&B, multi-stem
DL	DIERVILLA LONICERA	BUSH HONEYSUCKLE	68	50cm ht	potted, 100cm o/c
PO	PHYSOCARPUS OPULIFOLIUS	COMMON NINEBARK	66	50cm ht	potted, 100cm o/c
POG	PHYSOCARPUS OPULIFOLIUS	DART'S GOLD NINEBARK	41	50cm ht	potted, 100cm o/c
PVM	PHILADELPHUS VIRGINALIS	MINNISOTA SNOWFLAKE	24	50cm ht	potted, 100cm o/c
SJF	SPIRAEA JAPONICA 'FROEBELI'	MOCKORANGE	64	50cm ht	potted, 100cm o/c
WFRP	WEIGELA FLORIDA 'RED PRINCE'	RED PRINCE WEIGELA	36	50cm ht	potted, 100cm o/c
<b>PERENNIALS</b>					
Ach1	Achillea 'Moonshine'	MOONSHINE YARROW	40	15 cm pot	plant 60cm o/c
Ach2	Achillea millefolium 'Cerise Queen'	CERISE QUEEN YARROW	42	15 cm pot	plant 60cm o/c
Ast1	ASTILBE ardensis 'Amethyst'	FALSE SPIREA (lavender)	18	15 cm pot	plant 60cm o/c
Ast2	ASTILBE ardensis 'Fanal'	FALSE SPIREA (red)	18	15 cm pot	plant 60cm o/c
Ast3	Astilbe x 'Younique Carmine'	YOUNIQUE CARMINE ASTILBE	18	15 cm pot	plant 60cm o/c
Ech	ECHINACEA pallida	PALE PURPLE CONEFLOWER	46	15 cm pot	plant 60cm o/c
Ger	GERANIUM maculatum	WILD GERANIUM	407	15 cm pot	plant 60cm o/c
Hem1	HEMEROCALLIS 'Hyperion'	Hyperion DAYLILY	61	15 cm pot	plant 60cm o/c
Hem2	HEMEROCALLIS 'Stella De Oro'	'Stella De Oro' (yellow) DAYLILY	10	15 cm pot	plant 60cm o/c
Hem3	HEMEROCALLIS 'Little Dandy'	'Little Dandy' (purple/red) DAYLILY	10	15 cm pot	plant 60cm o/c
Hem4	HEMEROCALLIS 'Alpine Mist'	'Alpine Mist' (light red) DAYLILY	10	15 cm pot	plant 60cm o/c
Hem5	HEMEROCALLIS 'Sammy Russel'	'Sammy Russel' (orange / red) DAYLILY	10	15 cm pot	plant 60cm o/c
Hos	HOSTA 'Big Daddy'	'Big Daddy' HOSTA	20	15 cm pot	plant 75cm o/c
Li	LIASTRIS spicata 'Florian Purple'	FLORIAN PURPLE BLAZING STAR	40	15 cm pot	plant 60cm o/c
Phx	PHLOX paniculata 'Glamour Girl'	GARDEN PHLOX	12	15 cm pot	plant 60cm o/c
Pot	POTENTILLA verna nana	ALPINE CINQUEFOIL	196	15 cm pot	plant 60cm o/c
Rud1	RUDBECKIA laciniata	CUTLEAF CONEFLOWER	92	15 cm pot	plant 60cm o/c
Rud2	RUDBECKIA fulgida 'Goldstrum'	GOLDEN DAISY	46	15 cm pot	plant 60cm o/c
Sal	SALVIA x sylvestris 'May Night'	MAY NIGHT SAGE	46	15 cm pot	plant 60cm o/c
<b>ORNAMENTAL GRASSES</b>					
Cal	CALAMAGROSTIS canadensis	CANADA BLUEJOINT	30	15cm pot	plant 75cm o/c
Des	DESCHAMPSIA caespitosa	GOLDEN VEIL TUFT HAIR GRASS	56	15 cm pot	plant 75cm o/c
Spo	SPOROBOLUS heterolepis	PRAIRIE DROPSSEED	15	15 cm pot	plant 75cm o/c

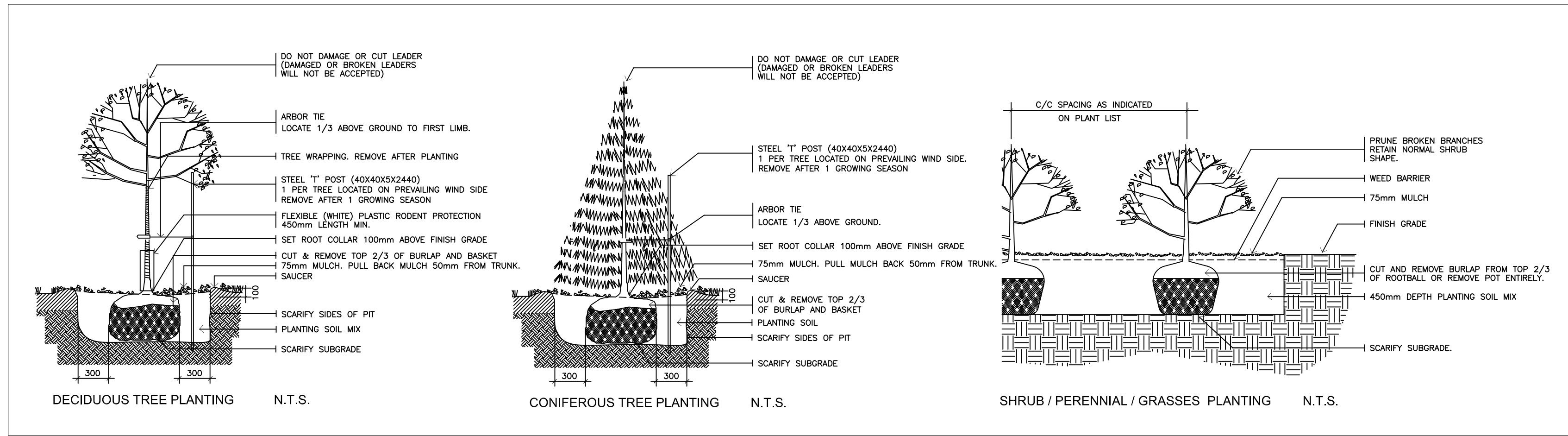


RAISED GARDEN PLANTER (ILLUSTRATION)

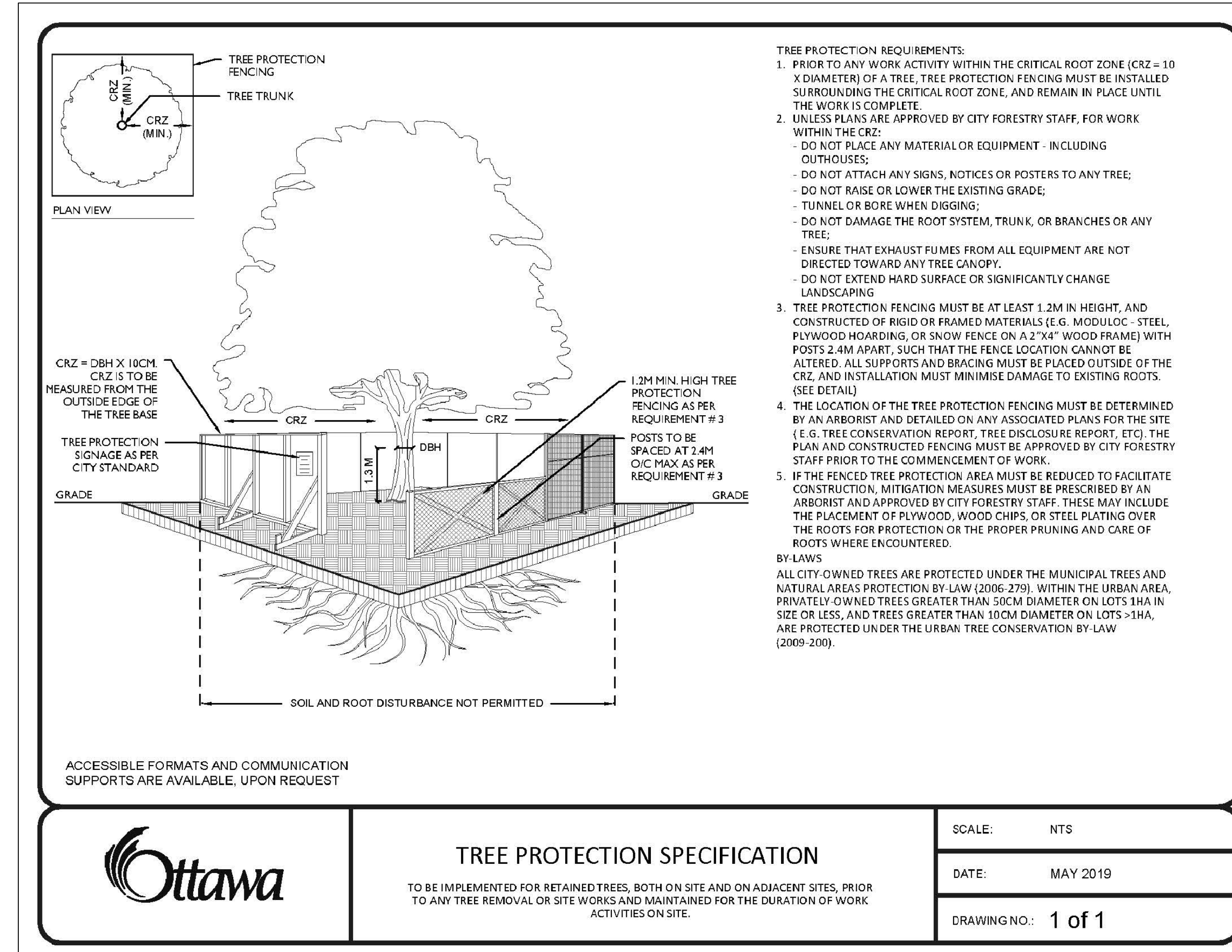


D07-12-23-0025

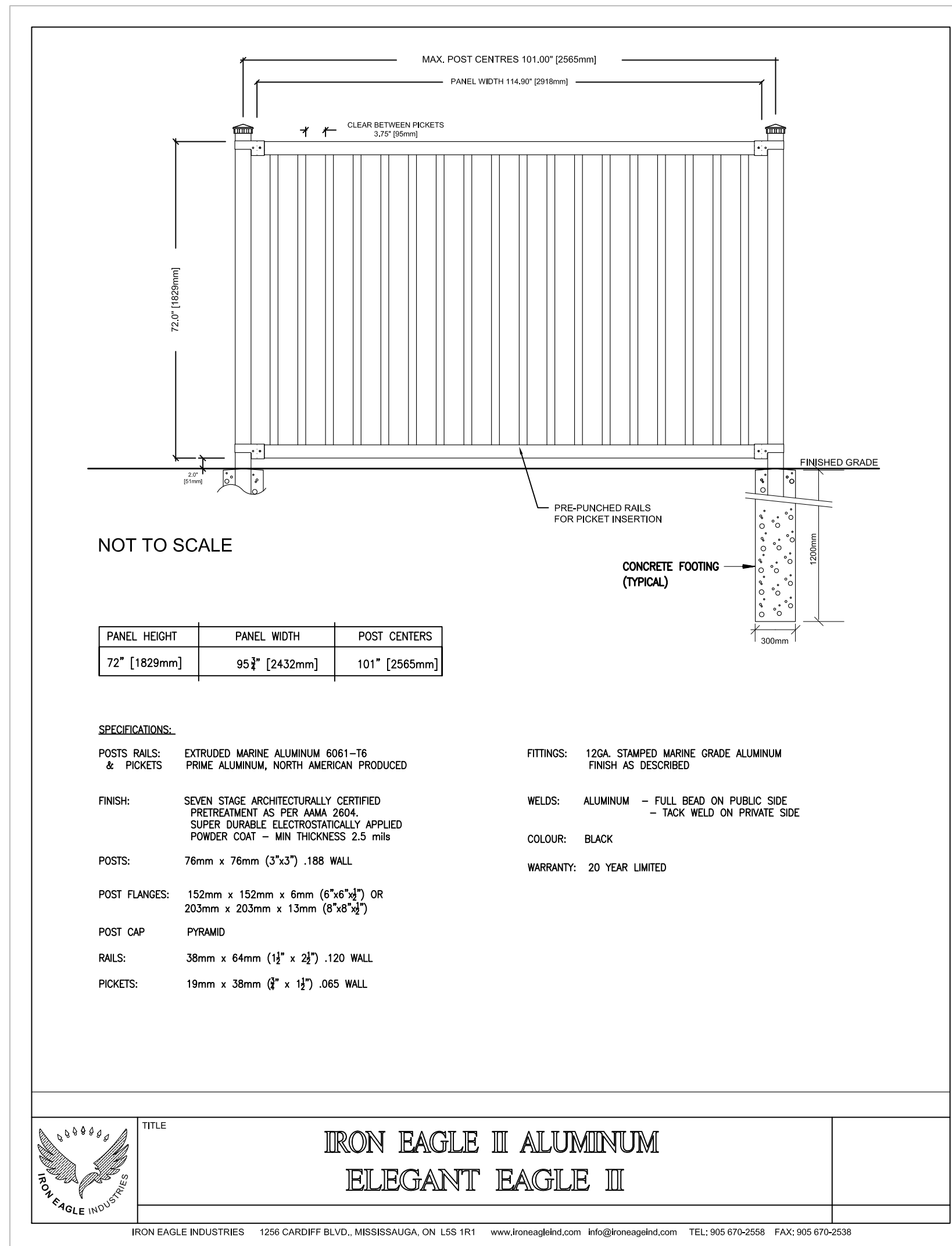




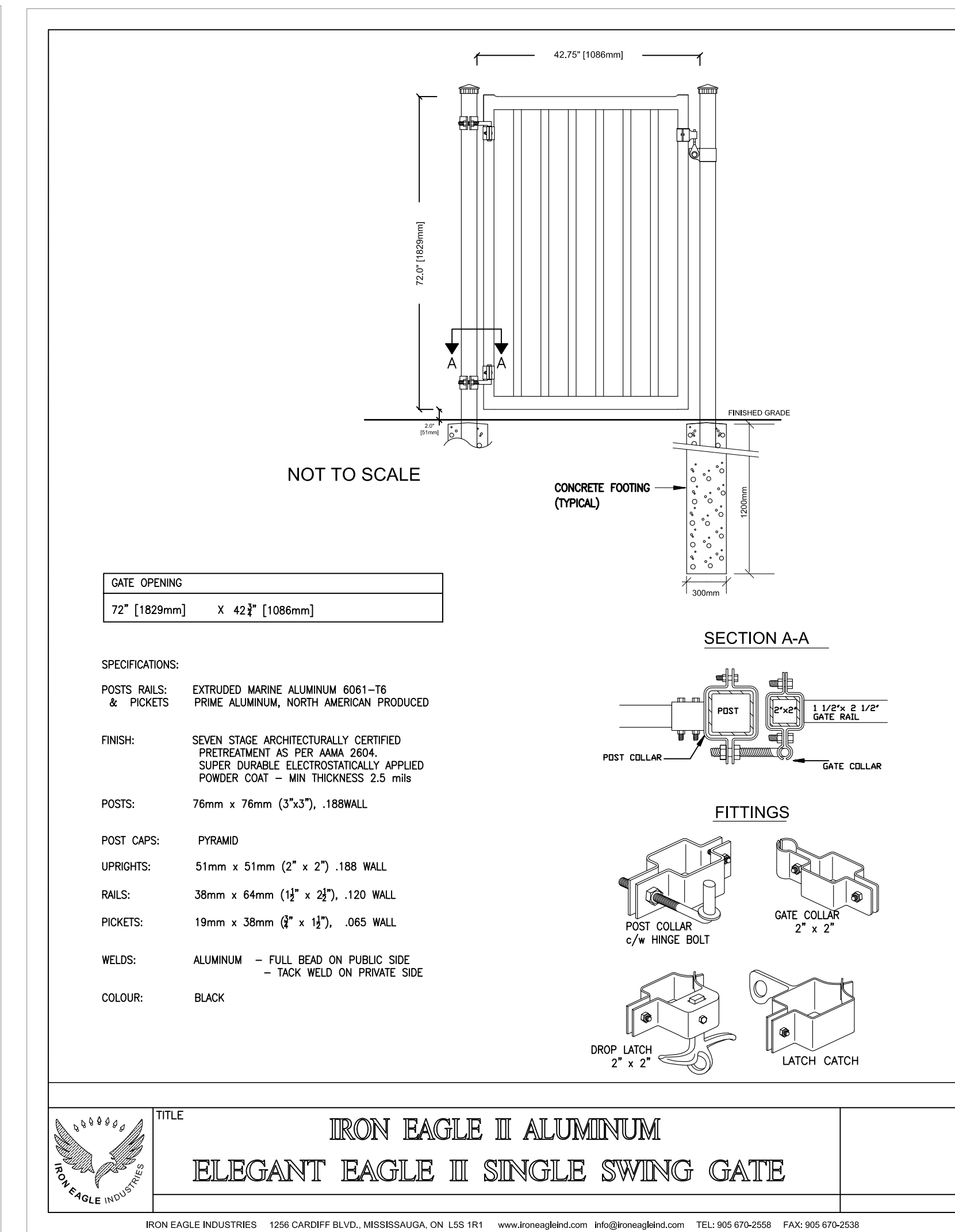
1 L2.01 PLANTING DETAILS (TYPICAL) NTS



2 L2.01 TREE PROTECTION BARRIER NTS



3 L2.01 METAL FENCE NTS

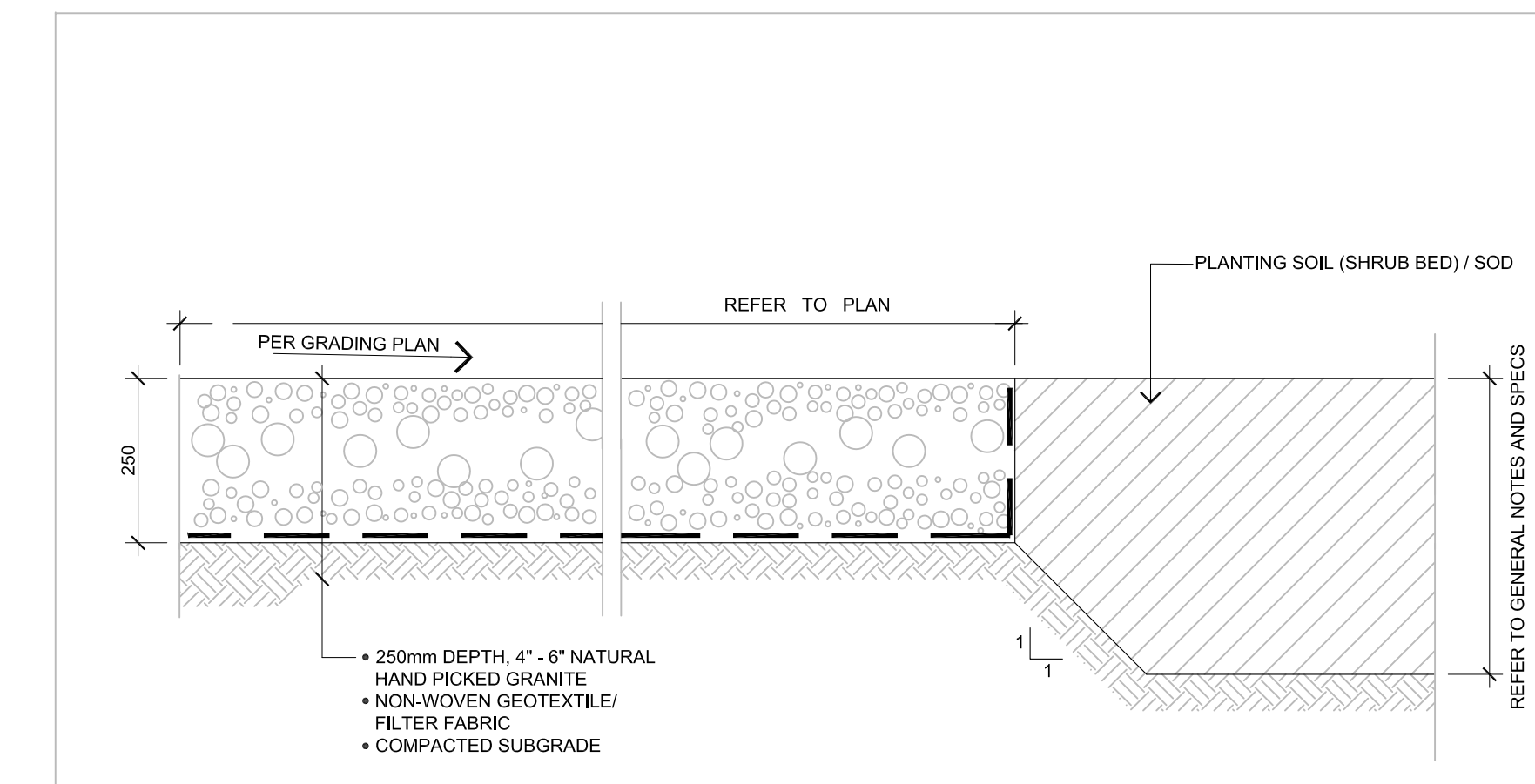
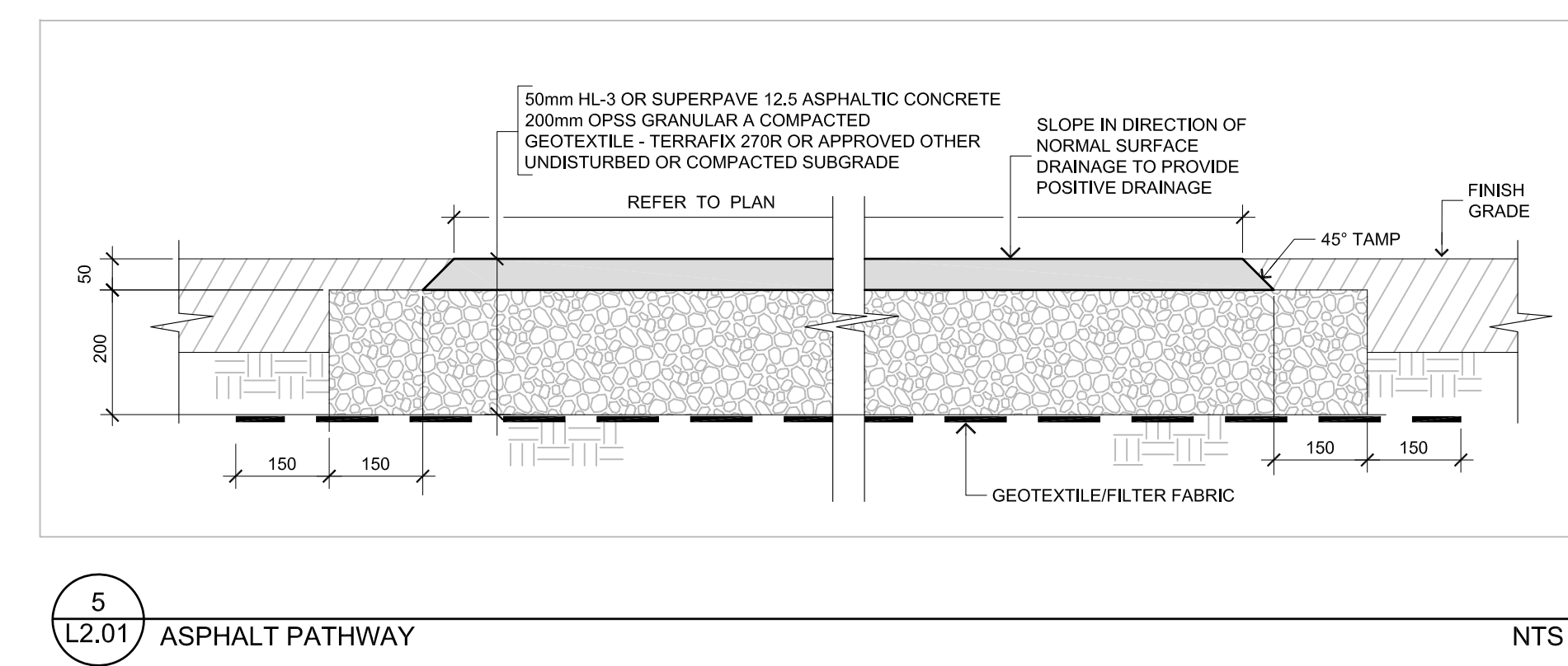


4 L2.01 METAL (FENCE) GATE NTS

**APPROVED**  
By Adam Brown at 1:03 pm, Aug 10, 2023

*Adam Brown*

**ADAM BROWN**  
MANAGER, DEVELOPMENT REVIEW - RURAL PLANNING, REAL ESTATE & ECONOMIC DEVELOPMENT DEPARTMENT, CITY OF OTTAWA



**FOR APPROVAL ONLY**

no.	date	revision
2.	JUNE 2/23	RE-ISSUE FOR SPA (2)
1.	MAY 12/23	ISSUE FOR MLTC WORKING DRAWINGS

Contractor shall check and verify all dimensions on site and report all errors and/or omissions to the Consultant.  
Work to be done in accordance with all applicable codes and by-laws.  
Do not scale Drawing.  
This Drawing shall not be used for construction until signed by the Consultant.  
Copyright reserved. This Drawing is the exclusive property of Levstek Consultants Inc. and shall not be used without consent.

Consultant: **LEVSTEK CONSULTANTS** LANDSCAPE ARCHITECTS  
5871 Hugh Crescent - Ottawa - Ontario - K0A 2W0  
613 - 824 - 8314

Client: \_\_\_\_\_

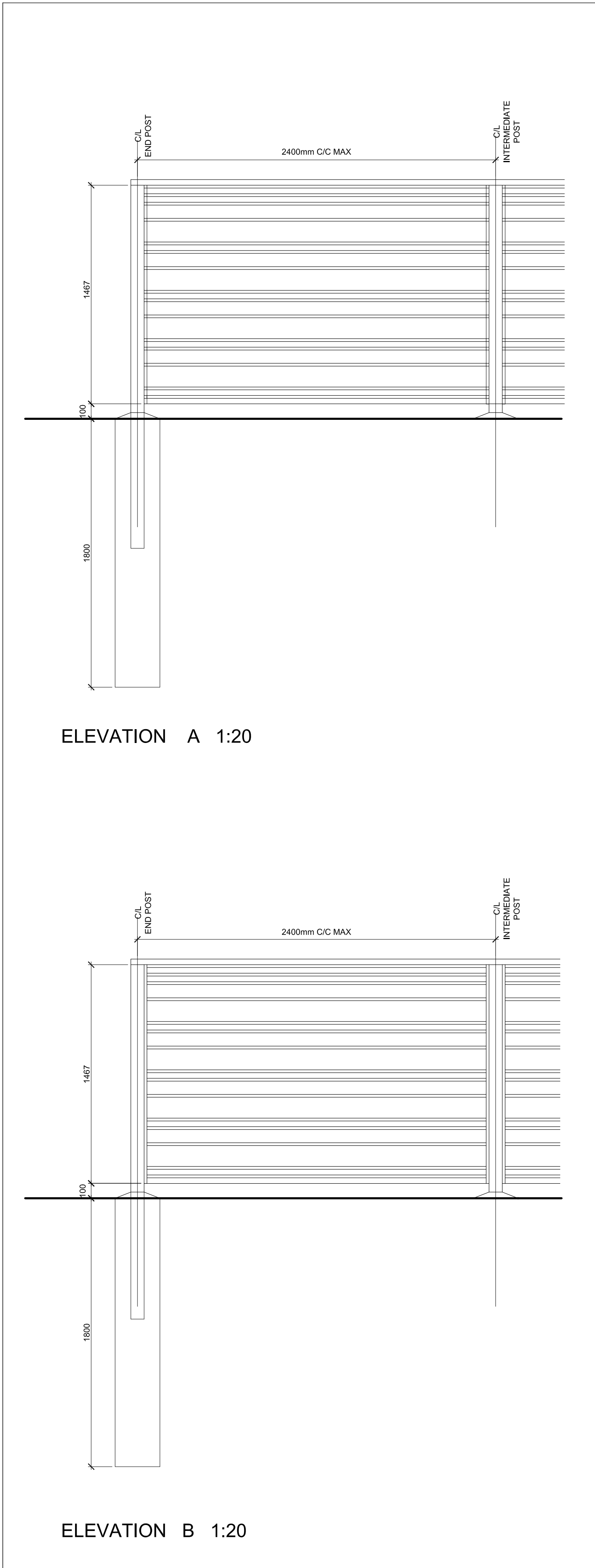
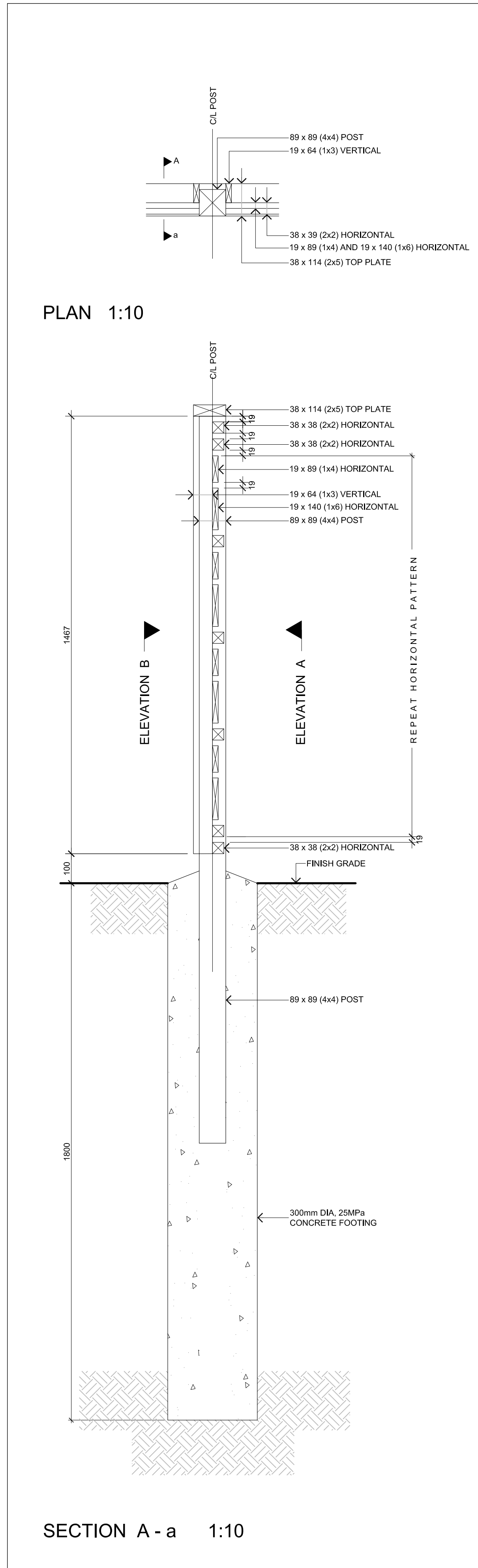
Project: **ORLEANS EXTENDICARE**  
1045 NOELLA LECLAIR

Drawing Title: **LANDSCAPE DETAILS**

Drawn: MGB	Date: JAN 2023	Drawing No.:
Scale: AS NOTED	Project No.:	L2.01

D07-12-23-0025





**500 SERIES**

**MBR-0500-00003**  
Legacy # MBR500-S

**MATERIALS:** All parts of the bike rack are made from H.S. steel tube.

**FINISH:** All steel components are protected with E-Coat rust proofing. The Maglin Powdercoat System provides a durable finish on all metal surfaces.

**INSTALLATION:** The bike rack is delivered pre-assembled. It is available with either a surface mount or direct burial installation option.

**TO SPECIFY:** Select MBR-0500-00003  
Choice:  
- Powdercoat Color

HEIGHT: 35" (88.9cm)    LENGTH: 19.25" (48.9cm)    WEIGHT: 13.27 lbs (6.0kg)

**MAGLIN**  
Steel Furniture

1-800-774-5348  
1-877-244-3333  
www.maglin.com  
sales@maglin.com

All drawings, specifications, design and details on this page remain the property of Maglin Steel Furniture Inc. and may not be used without Maglin's authorization. Details and specifications may vary due to continuing improvements of our products.

INSTALLATION: SURFACE MOUNT  
FINISH: TITANIUM (GLOSS) POWDERCOAT

2  
L2.02 BICYCLE RACK NTS

**800 SERIES**

**MBE-0870-00025**  
Legacy # MLB870-W

**MATERIALS:** Bench ends are made from solid cast aluminum. The seat employs ipe wood slats.

**FINISH:** All steel components are protected with E-Coat rust proofing. The Maglin Powdercoat System provides a durable finish on all metal surfaces.

**INSTALLATION:** The bench is delivered pre-assembled. Holes (0.5") are provided in each foot for securing to base.

**TO SPECIFY:** Select MBE-0870-00025  
Choice:  
- Powdercoat Color

HEIGHT: 32.2" (81.7cm)    LENGTH: 69.5" (176.5cm)    DEPTH: 24.2" (61.4cm)    WEIGHT: 121.62 lbs (55.1kg)

**MAGLIN**  
Steel Furniture

1-800-774-5348  
1-877-244-3333  
www.maglin.com  
sales@maglin.com

All drawings, specifications, design and details on this page remain the property of Maglin Steel Furniture Inc. and may not be used without Maglin's authorization. Details and specifications may vary due to continuing improvements of our products.

INSTALLATION: SURFACE MOUNT  
POWDERCOAT COLOR: TITANIUM (GLOSS)

3  
L2.02 BENCH NTS

**APPROVED**  
By Adam Brown at 1:04 pm, Aug 10, 2023

*Adam Brown*

**ADAM BROWN**  
MANAGER, DEVELOPMENT REVIEW - RURAL  
PLANNING, REAL ESTATE & ECONOMIC DEVELOPMENT  
DEPARTMENT, CITY OF OTTAWA

FOR APPROVAL ONLY


1.	JUNE 2/23	RE-ISSUE FOR SPA (2)
----	-----------	----------------------

no.	date	revision
-----	------	----------

North Arrow

Stamp

Contractor shall check and verify all dimensions on site and report all errors and/or omissions to the Consultant.  
Work to be done in accordance with all applicable codes and by-laws.

Do not scale Drawing.  
This Drawing shall not be used for construction until signed by the Consultant.

Copyright reserved. This Drawing is the exclusive property of Levstek Consultants Inc. and shall not be used without consent.

Consultant

**LEVSTEK CONSULTANTS**  
LANDSCAPE ARCHITECTS

5871 Hugh Crescent - Ottawa - Ontario - K9A 2W6  
613 - 826 - 8318

Client

Project

**ORLEANS EXTENDICARE**  
1045 NOELLA LECLAIR

Drawing Title

**LANDSCAPE DETAILS**

Drawn	Date	Drawing No.
MGB	JAN 2023	
Scale	Project No.	
AS NOTED	1217	L2.02

1  
L2.02 WOOD SCREEN

D07-12-23-0025