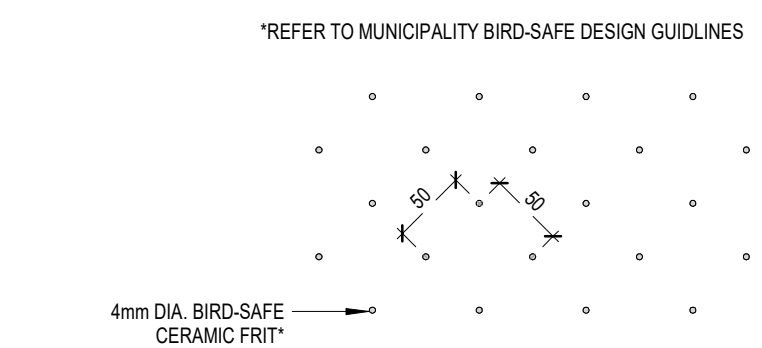


**GLAZING TO ROOM AREA PERCENTAGE**

ROOM	ROOM AREA	OPERABLE GLAZING AREA	PERCENT	TOTAL GLAZING AREA	PERCENT
PRIVATE RM	14.938m <sup>2</sup>	0.775m <sup>2</sup>	5.2%	1.55m <sup>2</sup>	10.4%
SEMI-PRIVATE RM	15.399m <sup>2</sup>	0.775m <sup>2</sup>	5%	1.55m <sup>2</sup>	10%
ACTIVITY SPACE	19.131m <sup>2</sup>	N/A		3.1m <sup>2</sup>	16.2%
CENTRAL LOUNGE	28.405m <sup>2</sup>	N/A		3.1m <sup>2</sup>	11.7%
CORNER LOUNGE	23.536m <sup>2</sup>	N/A		7.065m <sup>2</sup>	30%

NOTE: GLAZING AREA IS UNOBSTRUCTED GLASS AREA (EXCLUDES MULLIONS) BASED ON SPECIFIED WINDOW MANUFACTURER

**4 WINDOW SCHEDULE - SPA**  
 A11.40 1:50

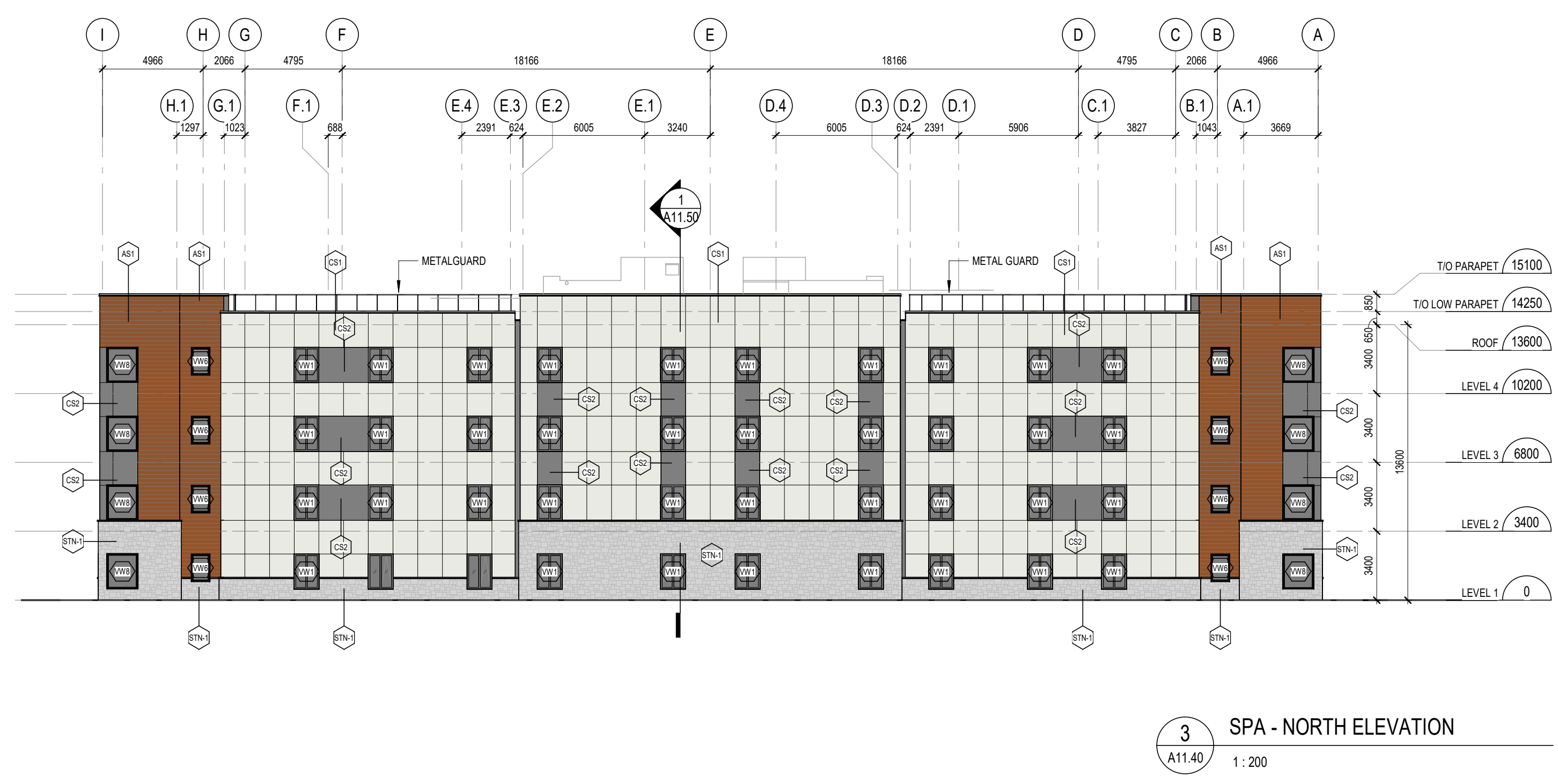


**5 BIRD-SAFE GLAZING CERAMIC FRIT**  
 A11.40 1:5

**APPROVED**  
 By Adam Brown at 12:52 pm, Aug 10, 2023

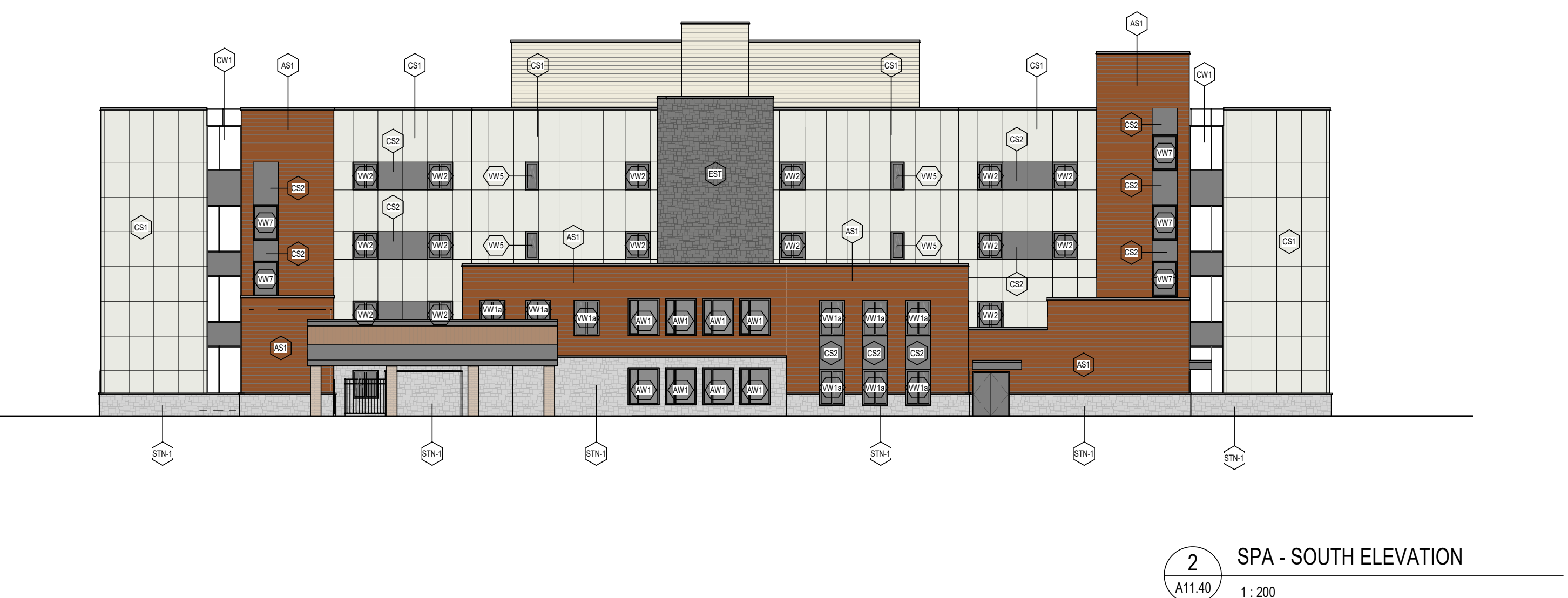
*Adam Brown*

**ADAM BROWN**  
 MANAGER, DEVELOPMENT REVIEW - RURAL PLANNING, REAL ESTATE & ECONOMIC DEVELOPMENT DEPARTMENT, CITY OF OTTAWA



**LEGEND - EXTERIOR MATERIALS**

- CS1 CEMENTITIOUS SIDING - PANEL (COLOUR 1)
- CS2 CEMENTITIOUS SIDING - PANEL (COLOUR 2)
- AWS ALUMINUM WOOD LOOK HORIZONTAL SIDING
- MS1 METAL SIDING - HORIZONTAL PLANK STYLE
- STN EXTERIOR STONE UNITS
- VW# PREFINISHED VINYL WINDOW
- SP# PREFINISHED ALUMINUM STOREFRONT SYSTEM
- CW# PREFINISHED ALUMINUM CURTAIN WALL
- GL# GLAZING TYPE



5 06.02.23 ISSUED FOR SPA RESUBMISSION MSA  
 3 02.27.23 ISSUED FOR CM RFP MSA  
 2 02.17.23 ISSUED FOR SITE PLAN APPROVAL MSA  
 # date: revision: by:

ONTARIO ASSOCIATION OF ARCHITECTS  
 EDWARD DEBAUM LICENCE 5908

All drawing and specifications are the property of the architect. The contractor shall verify all dimensions and information on site and report any discrepancy to architect before proceeding.

**EC ORLEANS**  
 1045 Noella Leclair Street  
 Ottawa, ON  
 PARCEL CONSISTS OF PIN's  
 145633946 & 145633944

**ELEVATIONS**

scale: As indicated  
 drawn by: APIXH  
 reviewed by: BW  
 job number: 22058  
 plot date: 06/02/2023  
 drawing number:

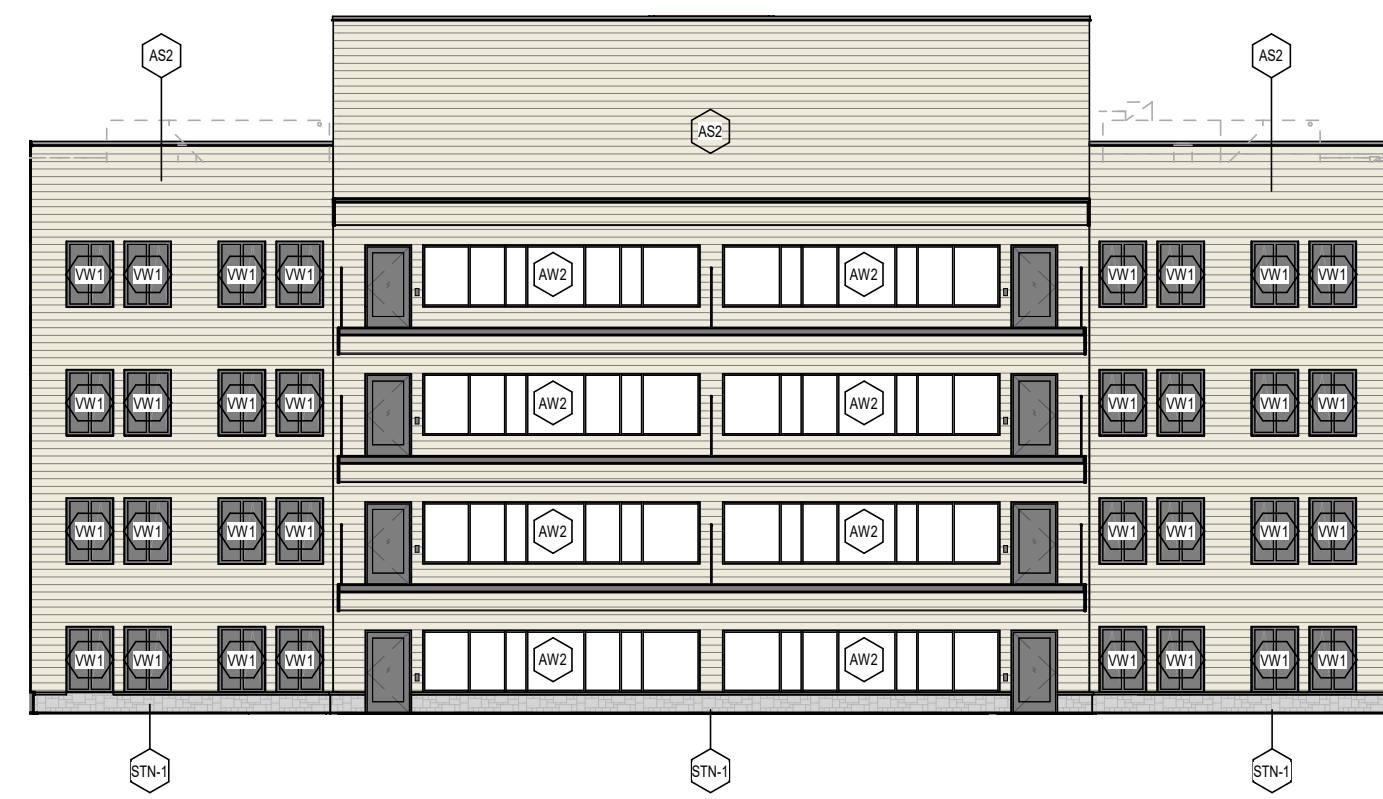




5 SPA - COURTYARD ELEVATION NORTH  
A11.41 1:200



4 SPA - COURTYARD ELEVATION WEST  
A11.41 1:200



3 SPA - COURTYARD ELEVATION SOUTH  
A11.41 1:200

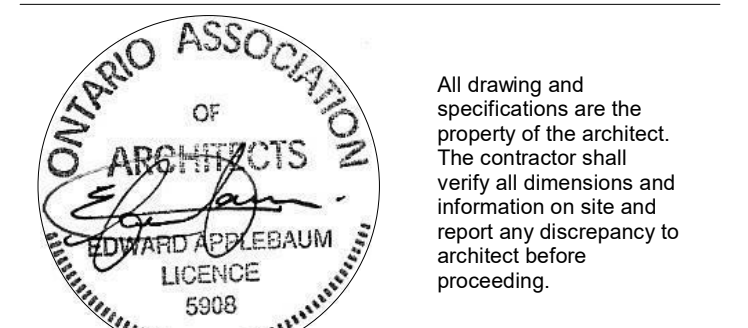


2 SPA - COURTYARD ELEVATION EAST  
A11.41 1:200

LEGEND: EXTERIOR MATERIALS

CS1	CEMENTITIOUS SIDING - PANEL (COLOUR 1)
CS2	CEMENTITIOUS SIDING - PANEL (COLOUR 2)
AWS	ALUMINUM WOOD LOOK HORIZONTAL SIDING
MS1	METAL SIDING - HORIZONTAL PLANK STYLE
STN	EXTERIOR STONE UNITS
VW#	PREFINISHED VINYL WINDOW
SF#	PREFINISHED ALUMINUM STOREFRONT SYSTEM
CW#	PREFINISHED ALUMINUM CURTAIN WALL
GL#	GLAZING TYPE

5	06.02.23	ISSUED FOR SPA RESUBMISSION	MSA
3	02.27.23	ISSUED FOR CM RFP	MSA
2	02.17.23	ISSUED FOR SITE PLAN APPROVAL	MSA
#	date:	revision:	by:

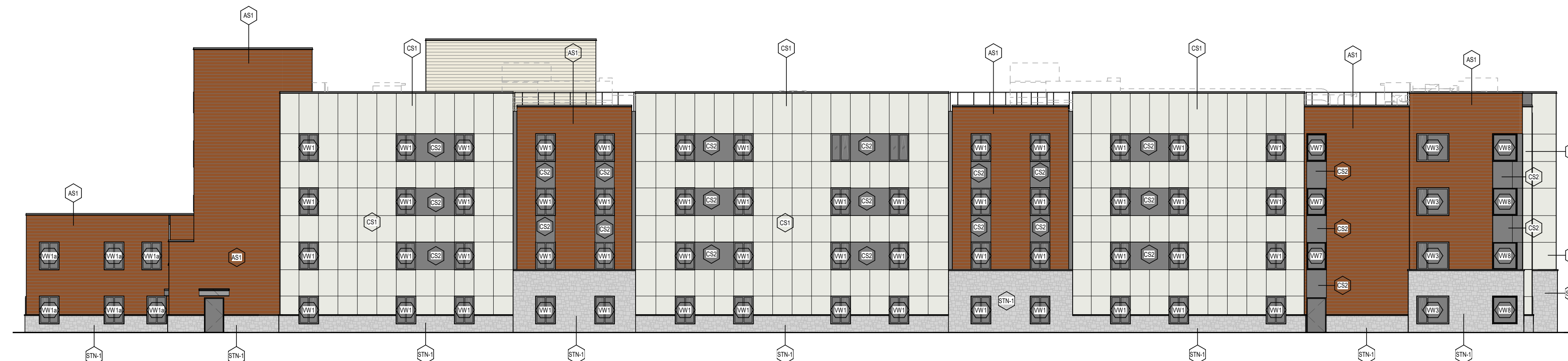


EC ORLEANS

1045 Noella Leclair Street  
Ottawa, ON  
PARCEL CONSISTS OF PIN's  
145633946 & 145633944

ELEVATIONS

scale: As indicated  
drawn by: APIXH  
reviewed by: BW  
job number: 22058  
plot date: 06/02/2023  
drawing number:



1 SPA - EAST ELEVATION  
A11.41 1:200

**APPROVED**  
By Adam Brown at 12:53 pm, Aug 10, 2023

*Adam Brown*  
**ADAM BROWN**  
MANAGER, DEVELOPMENT REVIEW - RURAL  
PLANNING, REAL ESTATE & ECONOMIC DEVELOPMENT  
DEPARTMENT, CITY OF OTTAWA