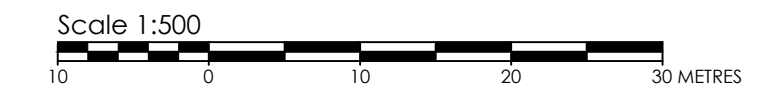


June 20, 2022
W:\Projects\161614554\Reference\Plan\Drawings\161614554-114_Surveyor.dwg

SCHEDULE				
PART	LOT	CONCESSION	PIN	AREA m ²
1				14454.1
2				3574.3
3	PART OF 1	11 (CUMBERLAND)	ALL OF 14563-3351	25.0
4				184.1
5				20.6

PLAN 4R-34736
 Received and deposited
 July 5th, 2022
 Courtney Boyle
 Representative for the
 Land Registrar for the
 Land Titles Division of
 Ottawa-carleton (No.4)

PLAN OF SURVEY OF
**PART OF LOT 1
 CONCESSION 11**
 (GEOGRAPHIC TOWNSHIP OF CUMBERLAND)
CITY OF OTTAWA



THE INTENDED PLOT SIZE OF THIS PLAN IS 914 mm IN WIDTH BY 610 mm IN HEIGHT WHEN PLOTTED AT A SCALE OF 1:500m.

METRIC CONVERSION
 DISTANCES AND COORDINATES SHOWN ON THIS PLAN ARE IN METRES AND CAN BE CONVERTED TO FEET BY DIVIDING BY 0.3048

GRID SCALE CONVERSION
 DISTANCES ARE GROUND AND CAN BE CONVERTED TO GRID BY MULTIPLYING BY THE COMBINED SCALE FACTOR OF 0.999966.

BEARING NOTE
 BEARINGS ARE GRID, DERIVED FROM THE CAN-NET VRS NETWORK OBSERVATIONS ON NCC HORIZONTAL CONTROL MONUMENTS 19773035 AND 19680191, CENTRAL MERIDIAN, 76°30' WEST LONGITUDE MTM ZONE 9, NAD83 (ORIGINAL).
 19773035 N:5004060.42 E:324888.04
 19680191 N:5033564.26 E:38064.94

LEGEND

SYMBOL	DENOTES	FOUND MONUMENTS
■	FOUND MONUMENTS	FOUND MONUMENTS
□	SET MONUMENTS	SET MONUMENTS
IB	IRON BAR	IRON BAR
IB#	ROUND IRON BAR	ROUND IRON BAR
SIB	STANDARD IRON BAR	STANDARD IRON BAR
SSIB	SHORT STANDARD IRON BAR	SHORT STANDARD IRON BAR
CC	CUT CROSS	CUT CROSS
CP	CONCRETE PIN	CONCRETE PIN
WIT	WITNESS	WITNESS
PIN	PROPERTY IDENTIFICATION NUMBER	PROPERTY IDENTIFICATION NUMBER
M/MEAS	MEASURED	MEASURED
PROP	PROPORTIONED	PROPORTIONED
OU	ORIGIN UNKNOWN	ORIGIN UNKNOWN
SG	STANTEC GEOMATICS LTD.	STANTEC GEOMATICS LTD.
P	PLAN 4R-32043	PLAN 4R-32043

OBSERVED REFERENCE POINTS DERIVED FROM THE CAN-NET VRS NETWORK GPS OBSERVATIONS ON NCC HORIZONTAL CONTROL MONUMENTS 19773035 AND 19680191, CENTRAL MERIDIAN, 76°30' WEST LONGITUDE MTM ZONE 9, NAD83 (ORIGINAL). COORDINATES TO URBAN ACCURACY PER SEC 14(2) OF O.REG. 216/10

ORP ID	NORTHING	EASTING
Ⓐ	5035710.05	383041.02
Ⓑ	5035525.83	383117.67

COORDINATES CANNOT, IN THEMSELVES, BE USED TO RE-ESTABLISH CORNERS OR BOUNDARIES SHOWN ON THIS PLAN.

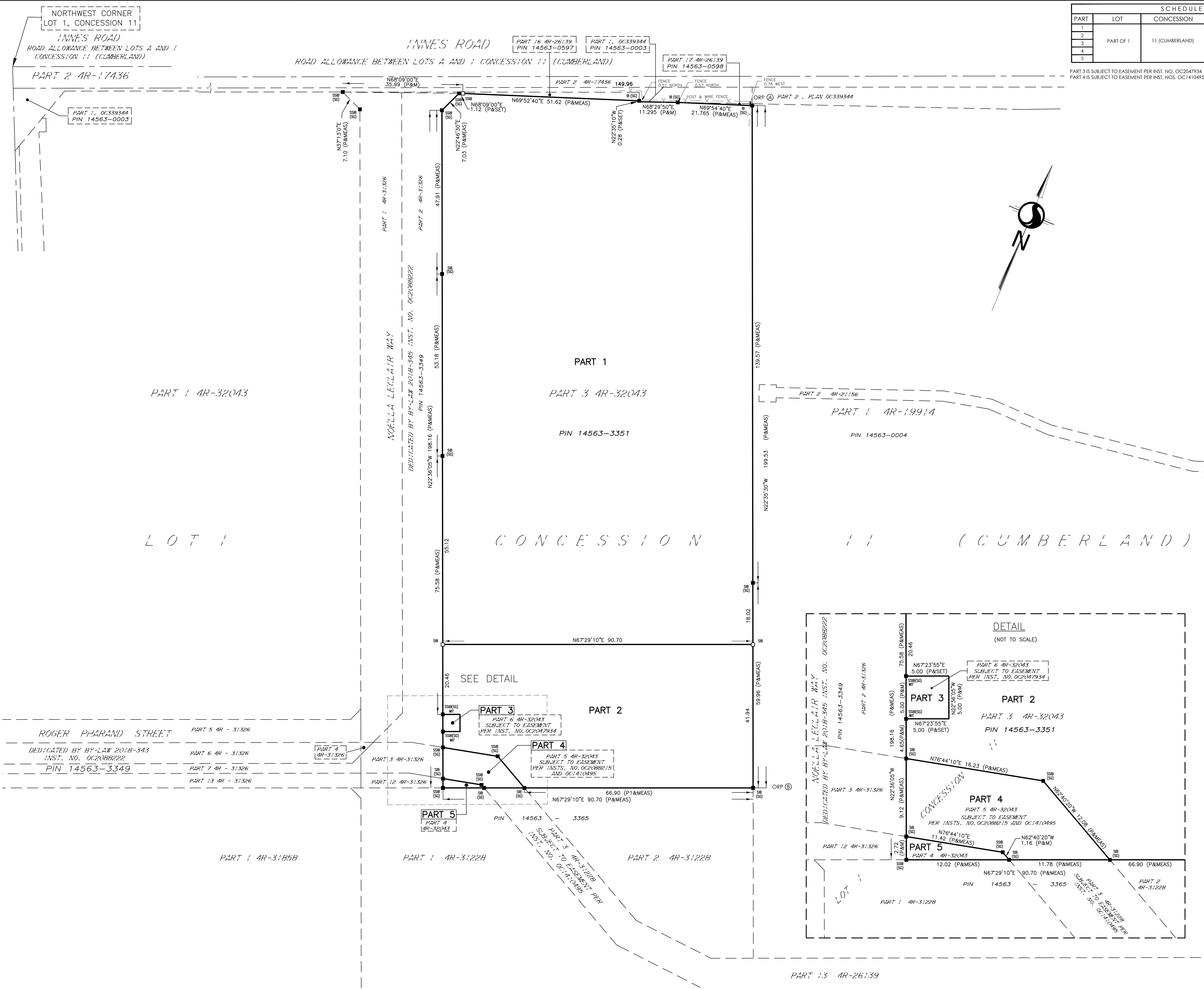
SURVEYOR'S CERTIFICATE
 I CERTIFY THAT:
 1. THIS SURVEY AND PLAN ARE CORRECT AND IN ACCORDANCE WITH THE SURVEYS ACT, THE SURVEYORS ACT AND THE LAND TITLES ACT AND THE REGULATIONS MADE UNDER THEM.
 2. THE SURVEY WAS COMPLETED ON THE 31st DAY OF MAY 2022.

July 4, 2022
 DATE
 FRANCIS LAU
 ONTARIO LAND SURVEYOR

THIS PLAN OF SURVEY RELATES TO AOLS PLAN SUBMISSION FORM NUMBER V-21311.

Stantec Geomatics Ltd.
 CANADA LANDS SURVEYORS
 ONTARIO LAND SURVEYORS
 1331 CLYDE AVENUE, SUITE 400
 OTTAWA, ONTARIO, K2C 3E4
 TEL. 613.722.4420 FAX. 613.722.2799
 stantec.com

DRAWN: ME CHECKED: CK PM: FL FIELD: CA PROJECT NO.: 161614554-114



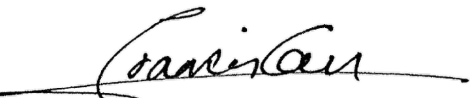
AREA CERTIFICATE

**Part of Lot 1
Concession 11
(Geographic Township of Cumberland)
City of Ottawa
PIN 14563-3351
Parts 1 to 5, Plan 4R-34736**

This is to certify that the areas of the following Parts on plan 4R-34736 are correct:

Part 1 = 14454.1 sq.m.
Part 2 = 3574.3 sq.m.
Part 3 = 25.0 sq.m.
Part 4 = 184.1 sq.m.
Part 5 = 20.6 sq.m.

STANTEC GEOMATICS LTD.



Francis Lau, O.L.S., Stantec Geomatics Ltd.

Dated July 5th, 2022